

STANTHORPE-ROSENTHAL REGION

LAND TYPES

SCALE 1 : 250000

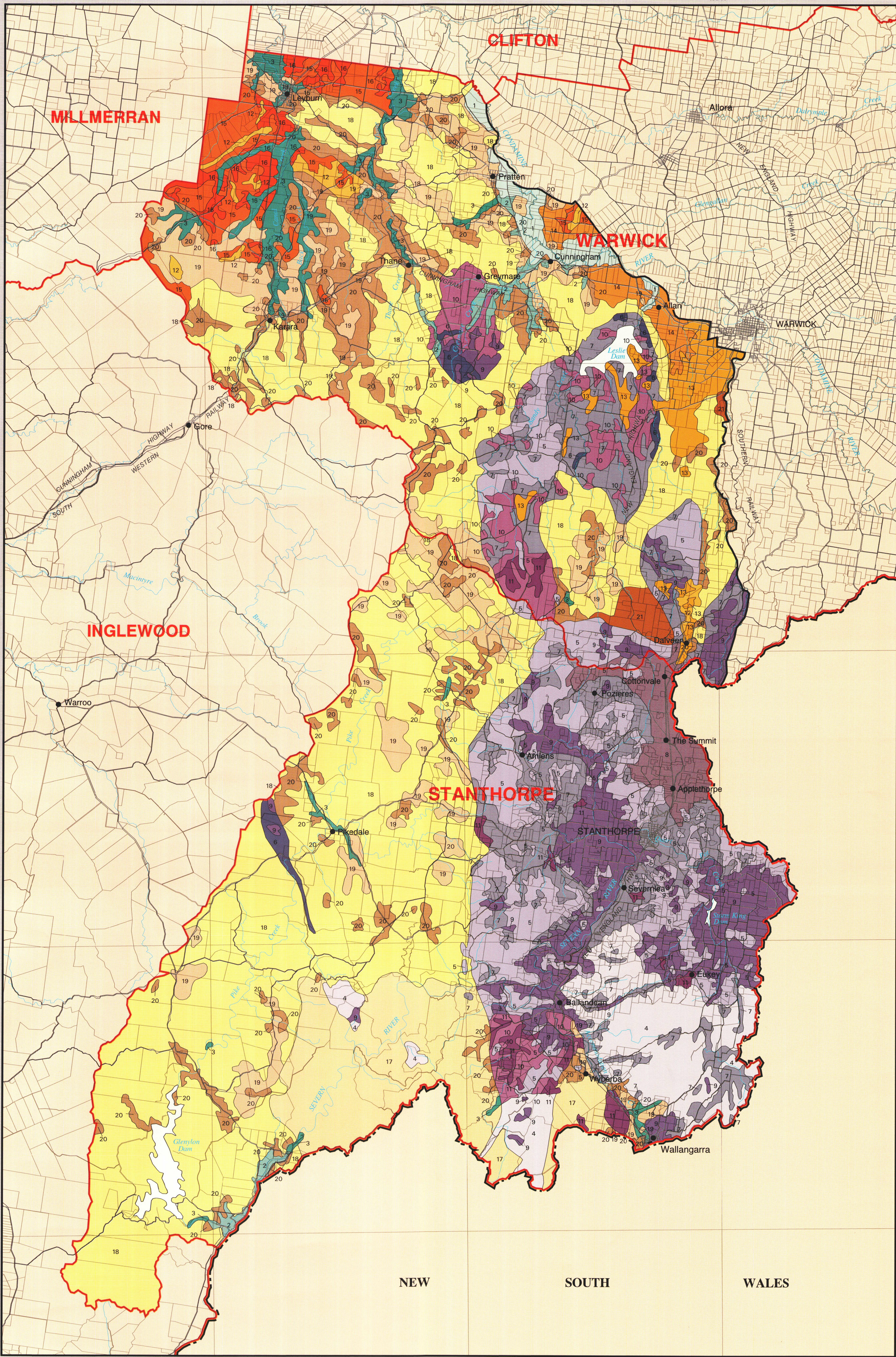


TRANSVERSE MERCATOR PROJECTION, ZONE 56

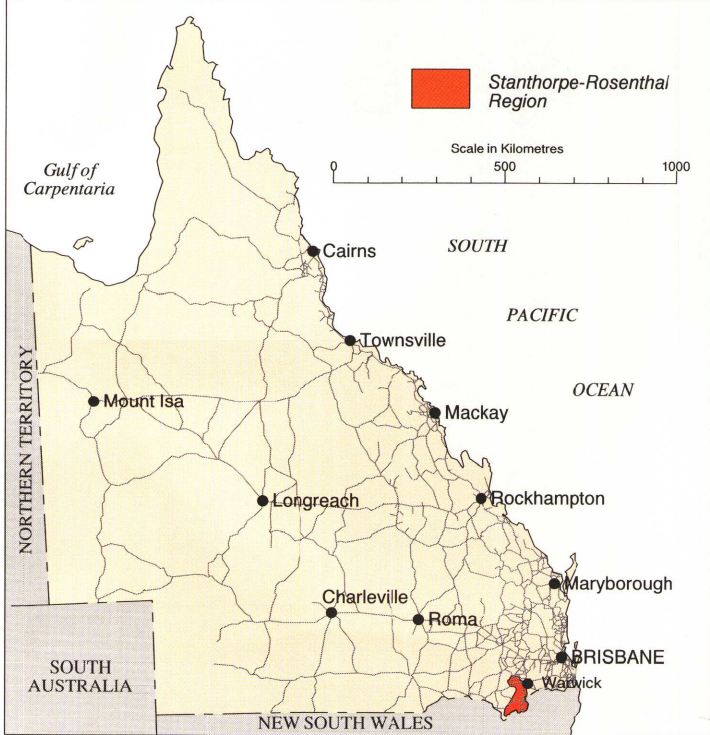
DISCLAIMER
This is a scanned image and some detail may be illegible or lost. While every care is taken to ensure the accuracy of this product, the Department of Environment and Resource Management makes no representations or warranties about its accuracy, reliability, completeness or suitability for any particular purpose and disclaims all responsibility and all liability (including without limitation, liability in negligence) for all expenses, losses, damages (including indirect or consequential damage) and costs which you might incur as a result of the product being inaccurate or incomplete in any way for any reason.

REFERENCE

Land types developed on alluvium	LAND TYPE	DOMINANT SOILS	LANDFORM	VEGETATION	AREA (ha)
1	Mixed basalt alluvial plains	Pratten - deep, self-mulching, black cracking clays	flat plains	blue gum open forest	4 415
2	Granite/traprock alluvial plains	Rodger - bleached loams to clay loams over dark clays	narrow alluvial and colluvial flats	poplar box grassy woodland; or grey box with fuzzy box and yellow box grassy woodland	3 024
3	Traprock/sandstone alluvial plains	Leyburn - bleached sands to clay loams over yellowish brown and brown clays	narrow alluvial and colluvial flats	poplar box grassy woodland; or poplar box, gum topped box open forest	9 473
Land types developed on granite					
4	Rolling granite mountains	Banca - shallow to deep, gritty sands amongst rock outcrops	deeply dissected mountains	New England blackbutt open forest	21 010
5	Granite hills	Banca - shallow to deep, gritty sands amongst rock outcrops	undulating to rolling hills and ridges	New England blackbutt shrubby open forest to woodland; or tumbltdown gum, Youman's stringybark, Caley's ironbark grassy/shrubby woodland	36 846
6	Undulating low granite hills	Banca - shallow to deep, gritty sands amongst rock outcrops	undulating low hills	broad leaved stringybark, blue gum grassy woodland	2 447
7	Granite rises - uniform sands	Pozieres - moderately deep to deep gritty sands	gently undulating to undulating rises and colluvial, lower hillslopes	broad leaved stringybark, blue gum grassy woodland	37 509
8	Elevated granite plains	Cottonvale - bleached sands over mottled, brown, grey and yellowish grey clays	elevated flat plains, gently undulating plains and rises, and colluvial slopes	New England blackbutt open forest	7 299
9	Undulating granite plains	Cottonvale - bleached sands over mottled, brown, grey and yellowish grey clays	gently undulating to level valley floors, and undulating to gently undulating colluvial lower slopes of rises and some low hills	New England blackbutt open forest; or New England peppermint, manna gum grassy woodland; or broad leaved stringybark, blue gum grassy woodland	53 646
10	Granite rises - texture contrast soils	Greymare - bleached sands to sandy loams over mottled, greyish yellow-brown to pale yellow clays	gently undulating to undulating rises, and lower hillslopes	tumbltdown gum, Youman's stringybark, Caley's ironbark grassy/shrubby woodland; or broad leaved stringybark, blue gum grassy woodland	13 683
11	Flat granite plains	Lyra - bleached sandy loams to clay loams over reddish brown to yellowish brown clays	flat and gently undulating plains	grey box with fuzzy box and yellow box grassy woodland; or Blakely's red gum and/or fuzzy box grassy woodland	3 897
Land types developed on sandstone					
12	Sandstone ridges	Hanmer - shallow to moderately deep soils with gravelly loams to clay loams over reddish brown to grey clays	flat-topped ridges and steep scarps (jumpups)	narrow leaved ironbark, blue gum or tumbltdown gum shrubby/grassy woodland; or vine thicket, or softwood scrub	2 572
13	Undulating low sandstone hills	Dalveen - gravelly, bleached sands over yellowish brown to brown clays which are commonly mottled Mardon - gravelly loams grading into red or brown loams or light clays	undulating hills of moderate relief	grey box with fuzzy box and yellow box grassy woodland	7 176
14	Undulating sandstone rises	Allan - sands to loams over brown to yellowish brown clays	gently undulating to undulating rises with some flat to gently undulating plains	grey box with fuzzy box and yellow box grassy woodland	4 307
15	Gently undulating sandy rises	Bonnie Doon - gravelly, bleached sands to loams over mottled, greyish brown to brown clays Drome - deep, bleached sands	gently undulating rises and plains	spotted gum, narrow leaved ironbark shrubby/grassy open forest	10 207
16	Gently undulating sandstone plains	Maxland - gravelly, bleached sands to loams over greyish brown or mottled, greyish brown to yellowish brown clays	gently undulating plains	spotted gum, narrow leaved ironbark shrubby/grassy open forest; or gum topped box grassy open forest	4 266
Land types developed on traprock					
17	Traprock mountains	Gammie - shallow, gravelly, brown loams to clay loams Karangli - shallow, gravelly soils with bleached loams over reddish brown, brown or yellowish brown clays	deeply dissected mountains	grey box with fuzzy box and yellow box grassy woodland; or silvertop stringybark, rough barked apple open forest; or a closed forest (dry rainforest)	3 661
18	Undulating to rolling traprock hills	Gammie - shallow, gravelly, brown loams to clay loams Karangli - shallow, gravelly soils with bleached loams over reddish brown, brown or yellowish brown clays	rolling traprock hillslopes, ridges and incised valleys, and undulating hills and low hills	narrow leaved ironbark, tumbltdown gum mixed species grassy/shrubby woodland	164 566
19	Low traprock hills	Gammie - shallow, gravelly, brown loams to clay loams Karangli - shallow, gravelly soils with bleached loams over reddish brown, brown or yellowish brown clays	undulating low hills and lower valley side slopes, and isolated traprock knolls	grey box with fuzzy box and yellow box grassy woodland; or mugga ironbark shrubby/grassy open forest	32 386
20	Traprock plains	Karangli - shallow to moderately deep soils with bleached sandy loams to clay loams over brown, reddish brown or yellowish brown clays	gently undulating to undulating plains and rises, and lower hillslopes and colluvial slopes fringing flood plains	grey box with fuzzy box and yellow box grassy woodland	33 877
21	Elevated low traprock hills	Glentanna - shallow to moderately deep soils with gravelly loams to clay loams over brown or reddish brown clays	gently undulating to undulating low hills	narrow leaved ironbark, tumbltdown gum mixed species grassy/shrubby woodland; or mugga ironbark and broad leaved red ironbark shrubby open forest	2 464



LOCALITY MAP



BASE MAP compiled from the Digital Cadastral Data Base supplied by the Department of Natural Resources, Brisbane.

COMPILED by John M. Maher, Resource Sciences Centre, Department of Natural Resources, Brisbane from the following sources:
- 'Land Capability Map' The Granite and Traprock Area of South East Queensland by A.K. Wills (1976);
- 'Soils Map' The Granite and Traprock Area of South East Queensland by A.K. Wills (1976).

CARTOGRAPHY by Diane J. Bray, Resource Sciences Centre, Department of Natural Resources, Brisbane.

PRINTED by GOPRINT Brisbane, 1996.

This map accompanies Maher, J.M. (ed.) 1996, *Understanding and Managing Soils in the Stanthorpe-Rosenthal Region*, Department of Natural Resources, Brisbane.

© The State of Queensland, Department of Natural Resources, 1996.

NOTE

This is not a soils map. The mapping units are Land Types and give a broad regional picture only. Boundaries are approximate and can only be confirmed by field survey. Each mapping unit contains a range of dominant and minor soils. Refer to the Field Manual for more information on the use and interpretation of this map in conjunction with the Land Type Sheets.



LEGEND

