

LAND SYSTEMS OF THE CAPRICORNIA COAST

MAP 1 ST LAWRENCE - MARLBOROUGH AREA

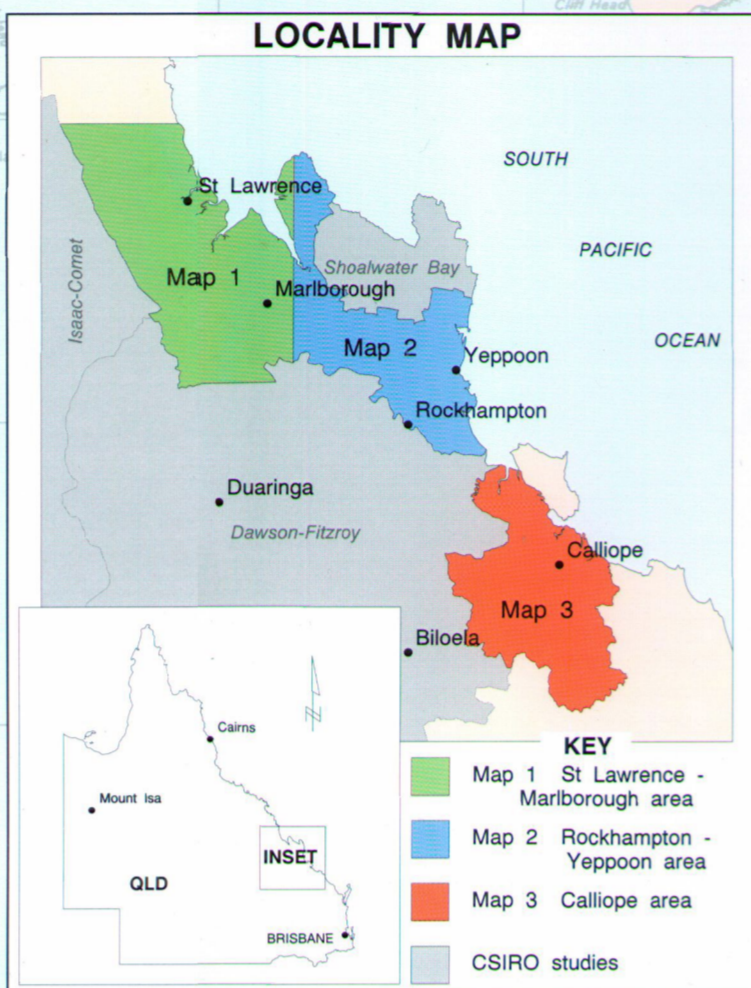
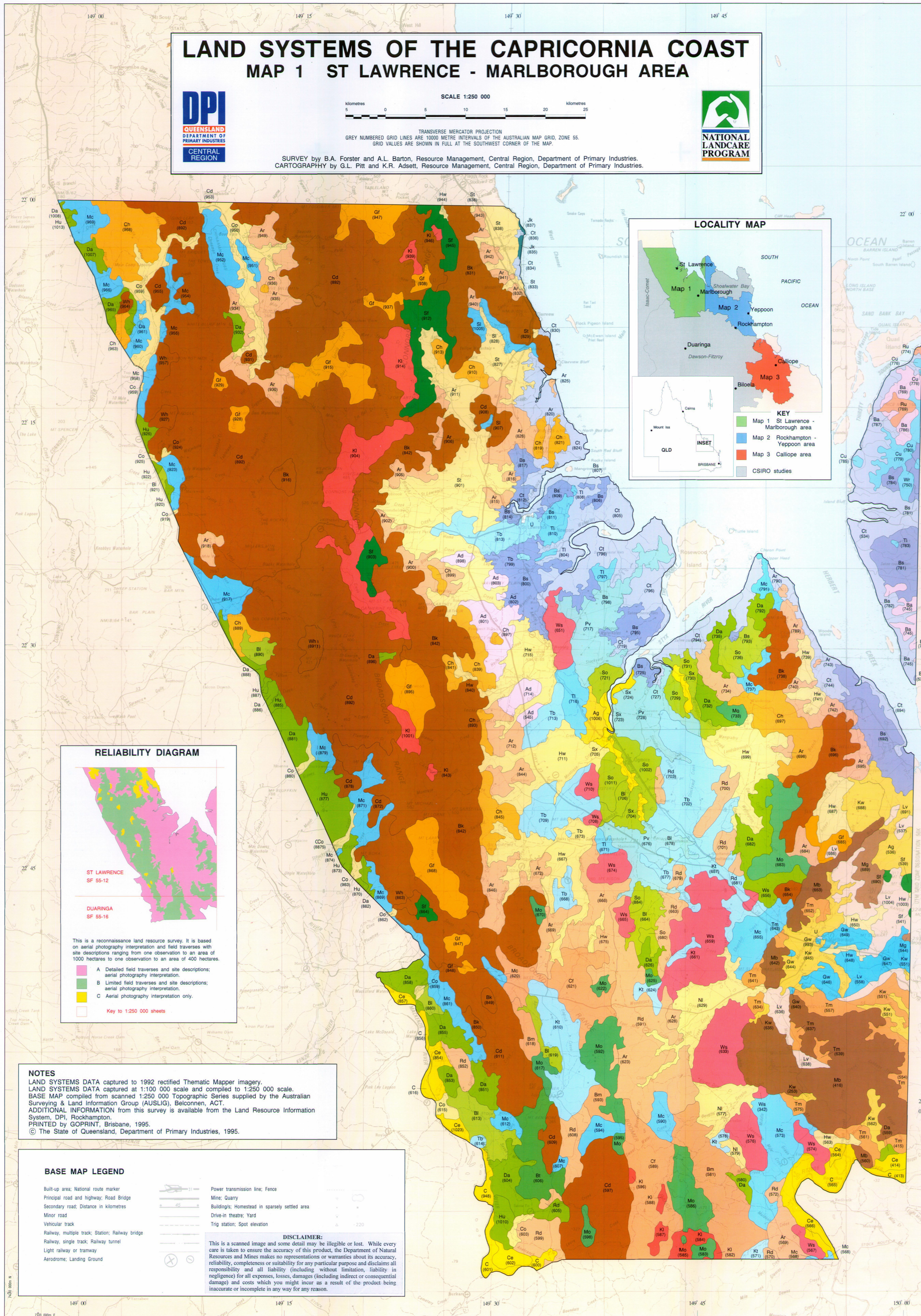


SCALE 1:250 000

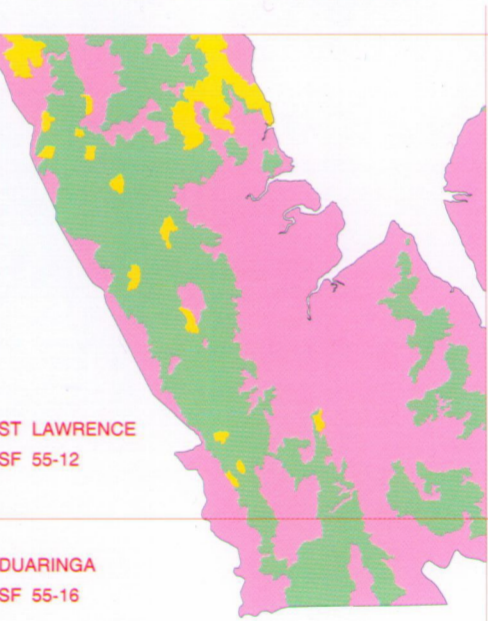
TRANSVERSE MERCATOR PROJECTION
GREY NUMBERED GRID LINES ARE 10000 METRE INTERVALS OF THE AUSTRALIAN MAP GRID, ZONE 55.
GRID VALUES ARE SHOWN IN FULL AT THE SOUTHWEST CORNER OF THE MAP.



SURVEY by B.A. Forster and A.L. Barton, Resource Management, Central Region, Department of Primary Industries.
CARTOGRAPHY by G.L. Pitt and K.R. Adsett, Resource Management, Central Region, Department of Primary Industries.



RELIABILITY DIAGRAM



This is a reconnaissance land resource survey. It is based on aerial photography interpretation and field traverses with site descriptions ranging from one observation to an area of 1000 hectares to one observation to an area of 400 hectares.

- A Detailed field traverses and site descriptions; aerial photography interpretation.
- B Limited field traverses and site descriptions; aerial photography interpretation.
- C Aerial photography interpretation only.

Key to 1:250 000 sheets

NOTES

LAND SYSTEMS DATA captured to 1992 rectified Thematic Mapper imagery.
LAND SYSTEMS DATA captured at 1:100 000 scale and compiled to 1:250 000 scale.
BASE MAP compiled from scanned 1:250 000 Topographic Series supplied by the Australian Surveying & Land Information Group (AUSLIG), Belconnen, ACT.
ADDITIONAL INFORMATION from this survey is available from the Land Resource Information System, DPI, Rockhampton.
PRINTED by GOPRINT, Brisbane, 1995.
© The State of Queensland, Department of Primary Industries, 1995.

BASE MAP LEGEND

- Built-up area; National roads marker
- Principal road and highway; Road Bridge
- Secondary road; Distance in kilometres
- Minor road
- Vehicular track
- Railway, multiple track; Station; Railway bridge
- Railway, single track; Railway tunnel
- Light railway or tramway
- Aerodrome; Landing Ground
- Power transmission line; Fence
- Mine; Quarry
- Building; Homestead in sparsely settled area
- Drive-in theatre; Yard
- Trig station; Spot elevation

DISCLAIMER:
This is a scanned image and some detail may be illegible or lost. While every care is taken to ensure the accuracy of this product, the Department of Natural Resources and Mines makes no representations or warranties about its accuracy, reliability, completeness or suitability for any particular purpose and disclaims all responsibility and all liability (including without limitation, liability in negligence) for all expenses, losses, damages (including indirect or consequential damage) and costs which you might incur as a result of the product being inaccurate or incomplete in any way for any reason.

MAP CODE	LAND SYSTEM	LANDFORM AND GEOLOGY	MAJOR SOILS	REMNANT NATIVE VEGETATION
MOUNTAINS				
Volcanic Rocks				
Wh	Wheeler	Steep to precipitous volcanic plugs on trachyte.	Shallow, stony brown massive loams; shallow, stony bleached, massive loams.	Eucalypt woodland (white mahogany, pink bloodwood); vine forest.
Bk	Berserker	Steep mountains and very steep escarpments on acid and intermediate volcanic rocks and minor intrusions.	Shallow, stony brown and black massive loams and clay loams; shallow, stony, black and brown, structured uniform clays and gradational clay loams.	Eucalypt woodland (lemon-scented gum, white mahogany); vine forest.
Cd	Creydon	Rolling to steep mountains on acid and intermediate volcanic rocks.	Bleached, massive sands and loams; shallow, stony, brown and black massive loams and clay loams.	Eucalypt woodland (lemon-scented gum, white mahogany, narrow-leaved ironbark, Queensland peppermint).
Sr	Serpentine	Steep mountains on serpentine.	Shallow, stony, black, uniform clays; red, nodular, structured clays.	Eucalypt woodland (serpentine ironbark).
Mb	Metamorphic Rocks	Steep mountains on metamorphic rocks.	Shallow, stony, brown and black massive loams and clay loams; bleached, massive sands and loams.	Eucalypt woodland (narrow-leaved ironbark, Queensland peppermint).
Mg	Magog			
PLATEAUS				
Volcanic Rocks				
Kl	Killarney	Undulating plateaus on acid and intermediate volcanic rocks and hard sedimentary rocks.	Bleached, massive sands and loams; shallow, stony, brown and black massive loams and clay loams.	Eucalypt woodland (lemon-scented gum, white mahogany, narrow-leaved ironbark, Queensland peppermint).
Sedimentary Rocks				
Ws	Woodstock	Dissected low plateaus on gently dipping sedimentary rocks.	Red, massive, gradational loams and clay loams; red, structured gradational clay loams.	Eucalypt woodland (narrow-leaved ironbark, pink bloodwood, wattie).
HILLS				
Eucalypt Open Forest and Woodland				
Granitic Rocks				
Gf	Glasford	Steep to rolling hills on granitic rocks.	Sandy and loamy surface, red and brown duplex soils; brown, red and yellow, massive gradational loams and clay loams.	Eucalypt woodland (narrow-leaved ironbark, pink bloodwood or silver-leaved ironbark gum-topped bloodwood).
Volcanic Rocks				
Ch	Chalmers	Rolling to steep hills on acid and intermediate volcanic rocks and steeply dipping sedimentary rocks.	Bleached massive sands and loams; shallow, stony brown and black, structured uniform clays and gradational clay loams.	Eucalypt woodland (narrow-leaved ironbark, lemon-scented gum, pink bloodwood, ghost gum).
Serpentine				
Tm	Tungumull	Rolling low hills and undulating rises on serpentine.	Shallow, stony, black, uniform clays; shallow, stony, red, structured gradational clay loams and uniform clays.	Eucalypt woodland (serpentine ironbark).
Sedimentary Rocks				
Cf	Clifton	Steep to rolling hills on steeply dipping sedimentary rocks with minor volcanic intrusions.	Shallow, stony brown and black massive loams and clay loams; bleached sandy and loamy surface, brown and grey, alkaline sodic duplex soils.	Eucalypt woodland (lemon-scented gum, narrow-leaved ironbark, pink bloodwood).
Bm	Boomer	Steep hills on steeply dipping sedimentary rocks, and some intermediate and acid volcanics.	Shallow, stony brown and black massive loams and clay loams.	Eucalypt woodland (narrow-leaved ironbark; rosewood) open forest.
Ru	Rundle	Steep to rolling hills on steeply dipping sedimentary rocks.	Shallow, stony brown and black massive loams and clay loams.	Eucalypt open forest (lemon-scented gum, narrow-leaved ironbark, pink bloodwood, Queensland peppermint) with mixed understorey.
Ar	Artillery	Undulating low hills, rises and fans on fine grained sedimentary rocks.	Bleached sandy and loamy surface, brown and grey, alkaline sodic duplex soils.	Eucalypt woodland (narrow-leaved ironbark, Queensland peppermint).
Rd	Rosewood	Rolling low hills and rises on hard sedimentary rocks.	Bleached sandy and loamy surface, brown and grey, alkaline sodic duplex soils.	Rosewood open forest with narrow-leaved ironbark, Queensland peppermint emergents.
Metamorphic Rocks				
Lv	Lowville	Rolling hills, rises and fans on metamorphic rocks.	Shallow, stony, bleached clay loamy and silty surface, brown and grey, alkaline sodic duplex soils.	Eucalypt woodland (narrow-leaved ironbark, Queensland peppermint, rosewood).
Vine Forest				
Granitic Rocks				
Sg	Superleaf	Steep hills and escarpments and valley flats on granitic and intermediate volcanic rocks.	Brown, red and yellow, massive gradational loams and clay loams.	Vine forest; eucalypt woodland (narrow-leaved ironbark; pink bloodwood).
Volcanic Rocks				
Bt	Belmont	Steep hills and rolling low hills on intermediate and basic volcanic rocks.	Shallow, stony red, brown and black structured uniform clays and gradational clay loams.	Vine forest.
Sedimentary Rocks				
Mo	Moore	Steep to rolling hills and rises on sedimentary rocks.	Shallow, stony brown, red and dark structured gradational clay loams and uniform clays.	Vine forest.
UNDULATING RISES AND PLAINS				
Eucalypt Woodland				
Granitic Rocks				
Gw	Galloway	Gently undulating rises and plains on granitic rocks; isolated low hills.	Sandy and loamy surface, brown and black duplex soils; bleached sandy and loamy surface, brown and grey, alkaline sodic duplex soils.	Eucalypt woodland (silver-leaved ironbark, gum-topped bloodwood); poplar box woodland.
Volcanic Rocks				
Mk	Mackford	Undulating rises, low hills and plains on intermediate volcanic rocks and granitoids.	Red and brown, structured uniform clays and gradational clay loams.	Eucalypt woodland (silver-leaved ironbark, gum-topped bloodwood).
Sl	Sleipner	Undulating footslopes and rises, and gently undulating fans below hills on intermediate and acid volcanic rocks.	Bleached loamy and clay loamy surface, brown and grey, alkaline sodic duplex soils.	Eucalypt woodland (blue gum, narrow-leaved ironbark).
Sedimentary Rocks				
Ti	Toivilla	Undulating rises and low hills on deeply weathered sedimentary and metamorphic rocks.	Red, structured gradational clay loams and uniform clays.	Eucalypt woodland (narrow-leaved ironbark, pink bloodwood).
Cu	Couti Out	Undulating rises and plains and isolated low hills on sedimentary rocks and unconsolidated sediments.	Bleached sandy and loamy surface, brown and yellow, mottled duplex soils; brown and yellow, mottled massive gradational loams and clay loams.	Eucalypt woodland (narrow-leaved ironbark, pink bloodwood, white mahogany); teatree woodland (broad-leaved teatree, narrow-leaved teatree).
Tb	Tooolomba	Gently undulating plains and rises on sedimentary rocks.	Bleached sandy and loamy surface, brown and grey, alkaline sodic duplex soils.	Eucalypt woodland (narrow-leaved ironbark, Queensland peppermint).
Kt	Keeltondra	Undulating rises and plains on sedimentary rocks and unconsolidated sediments.	Bleached clay loamy and silty surface, brown and grey, alkaline sodic duplex soils.	Gum-topped box, rosewood woodland.
Unconsolidated Sediments				
Pv	Plainview	Gently undulating to level plains on unconsolidated fine and medium textured sediments.	Black and grey, strongly sodic, cracking clays; bleached loamy and clay loamy surface, brown and grey, alkaline sodic duplex soils.	Eucalypt woodland (poplar box, narrow-leaved ironbark).
Teatree Woodland				
Sedimentary Rocks and Unconsolidated Sediments				
Ad	Ametdale	Gently undulating to level plains on sedimentary rocks and unconsolidated sediments; minor debris.	Bleached sandy and loamy surface, brown and grey, alkaline sodic duplex soils.	Teatree woodland (broad-leaved teatree, narrow-leaved teatree) with Queensland peppermint, poplar gum emergents.
Ba	Barkala	Gently undulating plains, rises and fans on unconsolidated coarse and medium textured sediments; circular swamps.	Bleached sandy and loamy surface, brown and yellow, mottled duplex soils; brown and yellow, mottled massive gradational loams and clay loams.	Teatree woodland (broad-leaved teatree, narrow-leaved teatree); eucalypt woodland (narrow-leaved ironbark, pink bloodwood, swamp mahogany).
Brigalow Scrub				
Sedimentary Rocks				
Da	Daunia	Gently undulating rises and plains on sedimentary rocks.	Black and brown cracking clays; bleached loamy and clay loamy surface, brown and grey, alkaline sodic duplex soils.	Brigalow scrub; vine forest.
Hu	Humboldt	Undulating plains and rises on sedimentary rocks and unconsolidated clay sediments; minor to moderate melonhole.	Grey, brown and black cracking clays; bleached loamy and clay loamy surface, brown and grey, alkaline sodic duplex soils.	Brigalow scrub; Dawson gum woodland.
Unconsolidated Sediments				
Bk	Blackwater	Level to gently undulating plains and rises on unconsolidated clay sediments; minor to moderate melonhole.	Grey, brown and black cracking clays.	Brigalow scrub.
So	Somerby	Level to gently undulating plains and rises on unconsolidated clay sediments; severe melonhole.	Grey and brown, strongly sodic, cracking clays.	Brigalow scrub.
OLD ALLUVIAL PLAINS AND ALLUVIAL FANS				
Cracking Clays				
Ag	Alligator	Broad alluvial plains; rarely incised; non-erosive flooding; moderate melonhole.	Grey and brown, acid cracking clays.	Blue gum woodland.
Kw	Kunwarara	Broad alluvial plains and swamps on fine textured alluvium derived from serpentine and overlying magnesian; moderate melonhole.	Black and brown, alkaline cracking clays; black self-mulching magnesian cracking clays.	Blue gum woodland, black teatree open forest.
Duplex Soils				
Hw	Hedlow	Broad, level to gently undulating alluvial plains and fans on silty and fine textured alluvium.	Bleached loamy, clay loamy and silty surface, brown and grey, alkaline sodic duplex soils.	Mixed eucalypt woodland (blue gum, narrow-leaved ironbark, poplar gum, swamp mahogany).
Nl	Nulgi	Broad, level to gently undulating alluvial plains on silty and fine textured alluvium.	Bleached silty surface, brown and grey, alkaline sodic duplex soils.	Gum-topped box woodland.
Co	Connors	Narrow alluvial plains along the Connors River and tributaries.	Bleached sandy and loamy surface, brown and grey, alkaline sodic duplex soils; clay loamy surface, brown and red duplex soils.	Poplar box woodland.
Sl	St Lawrence	Broad level alluvial plains on silty and fine textured alluvium; extensive, minor to severe debris.	Bleached loamy, clay loamy and silty surface, brown and grey, alkaline sodic duplex soils.	Eucalypt open woodland (narrow-leaved ironbark, Queensland peppermint, ghost gum) with teatree understorey.
FLOODPLAINS AND LOCAL ALLUVIAL PLAINS				
Cracking Clays				
C	Coolbah	Broad floodplains along the Fitzroy and Mackenzie Rivers.	Black and brown, self-mulching cracking clays.	Coolbah woodland.
Cr	Coralien	Broad floodplains along the Fitzroy and Mackenzie Rivers.	Black and brown, self-mulching cracking clays.	Brigalow scrub.
Gradational Soils				
Sx	Styx	Narrow floodplains along the Styx River and Wellington Creek.	Brown, massive fine sandy loams.	Eucalypt woodland (blue gum, Moreton Bay ash).
COASTAL DUNES AND SAND PLAINS				
Jk	Joskeleigh	Gently undulating beach ridge plains and swamps along the coast.	Yellow and red sands; brown shelly sands.	Eucalypt woodland (pink bloodwood, white mahogany, Moreton Bay ash, swamp mahogany, coast banksia); vine thicket.
MARINE PLAINS				
Wetland				
Wt	Wetland	Broad marine plains with a dense drainage channel network; freshwater swamps.	Black and grey, mottled cracking clays; crusting surface, grey mottled, saline cracking clays.	Swamp grasses; seageland.
Broadland				
Bs	Broadland	Broad marine plains elevated above regular tidal influence, incised by shallow channels, freshwater and brackish swamps.	Crusting surface, grey mottled, saline cracking clays; black and grey, mottled cracking clays.	Marine couch grassland.
Carpentaria				
Ct	Carpentaria	Marine plains, with extensive bare tidal flats inundated by tidal waters and dissected by tidal channels.	Crusting surface, grey mottled, saline cracking clays; saline muds and sands.	Mangrove low closed forest; marine couch grassland; sapphire.
MISCELLANEOUS				
U	Urban			
(702)	Unique Map Area (UMA) number.			