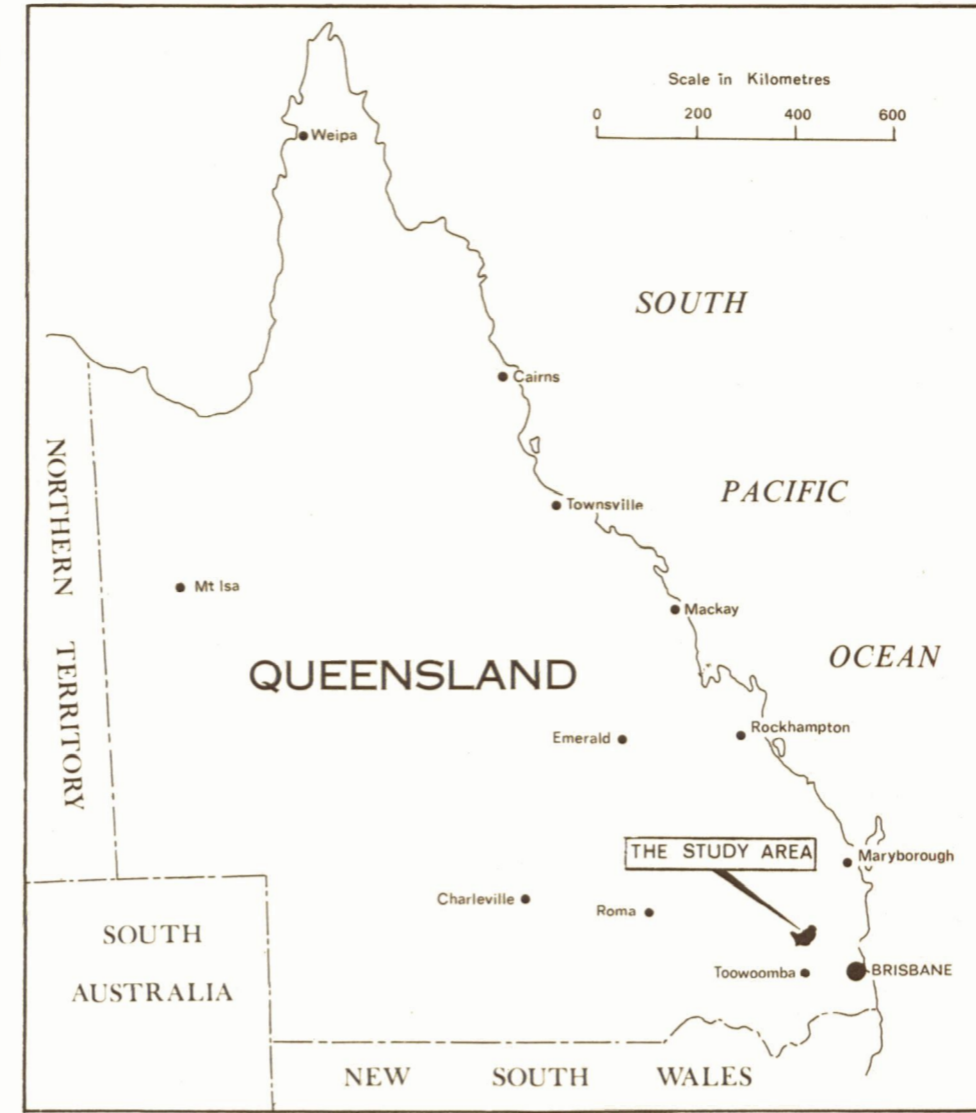


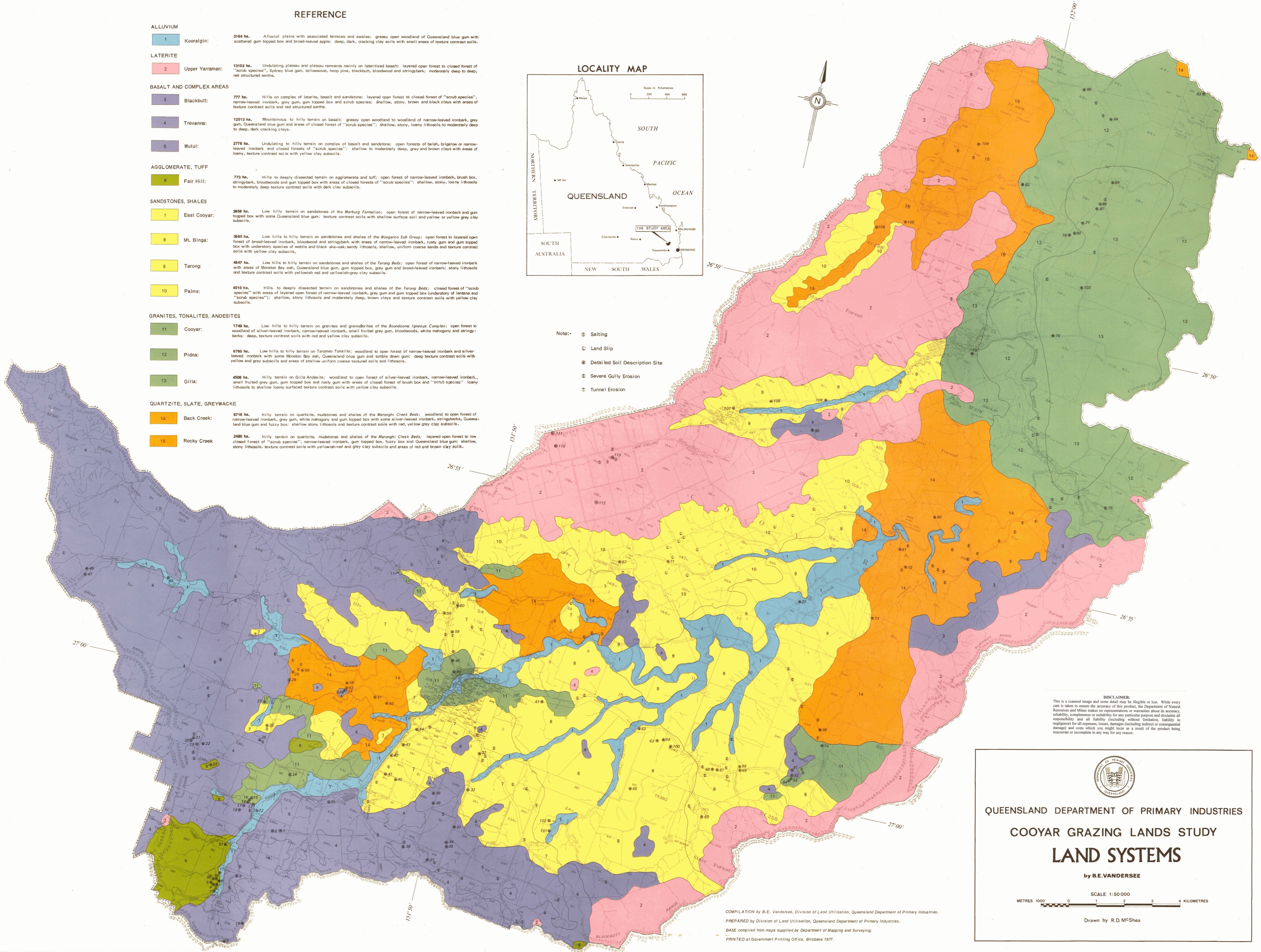
REFERENCE

<b>ALLUVIUM</b>		
1	Kooralgin:	3164 ha. Alluvial plains with associated terraces and swales; grassy open woodland of Queensland blue gum with scattered gum topped box and broad-leaved apple; deep, dark, cracking clay soils with small areas of texture contrast soils.
<b>LATERITE</b>		
2	Upper Yarraman:	13102 ha. Undulating plateau and plateau remnants mainly on lateritized basalt; layered open forest to closed forest of "scrub species", Sydney blue gum, tallwood, hoop pine, blackbutt, bloodwood and stringybark; moderately deep to deep, red structured earths.
<b>BASALT AND COMPLEX AREAS</b>		
3	Blackbutt:	777 ha. Hills on complex of laterite, basalt and sandstone; layered open forest to closed forest of "scrub species", narrow-leaved ironbark, grey gum, gum topped box and scrub species; shallow, stony, brown and black clays with areas of texture contrast soils and red structured earths.
4	Trevanna:	12513 ha. Mountainous to hilly terrain on basalt; grassy open woodland to woodland of narrow-leaved ironbark, grey gum, Queensland blue gum and areas of closed forest of "scrub species"; shallow, stony, loamy lithosols to moderately deep to deep, dark cracking clays.
5	Wutul:	2776 ha. Undulating to hilly terrain on complex of basalt and sandstone; open forests of balah, brigalow or narrow-leaved ironbark and closed forests of "scrub species"; shallow to moderately deep, grey and brown clays with areas of loamy, texture contrast soils with yellow clay subsoils.
<b>AGGLOMERATE, TUFF</b>		
6	Fair Hill:	773 ha. Hills to deeply dissected terrain on agglomerate and tuff; open forest of narrow-leaved ironbark, brush box, stringybark, bloodwoods and gum topped box with areas of closed forests of "scrub species"; shallow, stony, loamy lithosols to moderately deep texture contrast soils with dark clay subsoils.
<b>SANDSTONES, SHALES</b>		
7	East Cooyar:	3656 ha. Low hilly terrain on sandstones of the Marburg Formation; open forest of narrow-leaved ironbark and gum topped box with some Queensland blue gum; texture contrast soils with shallow surface soil and yellow or yellow grey clay subsoils.
8	Mt. Binga:	3685 ha. Low hills to hilly terrain on sandstones and shales of the Woopara Sub Group; open forest to layered open forest of broad-leaved ironbark, bloodwood and stringybark with areas of narrow-leaved ironbark, rusty gum and gum topped box with understorey species of wattle and black she-oak; sandy lithosols, shallow, uniform coarse sands and texture contrast soils with yellow clay subsoils.
9	Tarong:	4647 ha. Low hills to hilly terrain on sandstones and shales of the Tarong Beds; open forest of narrow-leaved ironbark with areas of Moreton Bay ash, Queensland blue gum, gum topped box, grey gum and broad-leaved ironbark; stony lithosols and texture contrast soils with yellowish red and yellowish-grey clay subsoils.
10	Palms:	4010 ha. Hills to deeply dissected terrain on sandstones and shales of the Tarong Beds; closed forest of "scrub species" with areas of layered open forest of narrow-leaved ironbark, grey gum and gum topped box (understorey of lantana and "scrub species"); shallow, stony lithosols and moderately deep, brown clays and texture contrast soils with yellow clay subsoils.
<b>GRANITES, TONALITES, ANDESITES</b>		
11	Cooyar:	1749 ha. Low hills to hilly terrain on granites and granodiorites of the Bloodsoms Igneous Complex; open forest to woodland of silver-leaved ironbark, narrow-leaved ironbark, small fruited grey gum, bloodwoods, white mahogany and stringybark; deep, texture contrast soils with red and yellow clay subsoils.
12	Pidna:	6780 ha. Low hills to hilly terrain on Taromeo Tonalite; woodland to open forest of narrow-leaved ironbark and silver-leaved ironbark with some Moreton Bay ash, Queensland blue gum and tumble down gum; deep texture contrast soils with yellow and grey subsoils and areas of shallow uniform coarse textured soils and lithosols.
13	Gilla:	4506 ha. Hilly terrain on Gilla Andesite; woodland to open forest of silver-leaved ironbark, narrow-leaved ironbark, small fruited grey gum, gum topped box and rusty gum with areas of closed forest of brush box and "scrub species"; loamy lithosols to shallow loamy surfaced texture contrast soils with yellow clay subsoils.
<b>QUARTZITE, SLATE, GREYWACKE</b>		
14	Back Creek:	6716 ha. Hilly terrain on quartzite, mudstones and shales of the Maronghi Creek Beds; woodland to open forest of narrow-leaved ironbark, grey gum, white mahogany and gum topped box with some silver-leaved ironbark, stringybark, Queensland blue gum and fuzzy box; shallow stony lithosols and texture contrast soils with red, yellow grey clay subsoils.
15	Rocky Creek:	2460 ha. Hilly terrain on quartzite, mudstones and shales of the Maronghi Creek Beds; layered open forest to low closed forest of "scrub species", narrow-leaved ironbark, gum topped box, fuzzy box and Queensland blue gum; shallow, stony lithosols, texture contrast soils with yellowish-red and grey clay subsoils and areas of red and brown clay soils.

LOCALITY MAP



- Note:-
- ⊕ Salting
  - ⊖ Land Slip
  - ⊙ Detailed Soil Description Site
  - ⊖ Severe Gully Erosion
  - ⊖ Tunnel Erosion



**DISCLAIMER:**  
This is a scanned image and some detail may be illegible or lost. While every care is taken to ensure the accuracy of this product, the Department of Natural Resources and Mines makes no representations or warranties about its accuracy, reliability, completeness or suitability for any particular purpose and disclaims all responsibility and all liability (including without limitation, liability in negligence) for all expenses, losses, damages (including indirect or consequential damage) and costs which you might incur as a result of the product being inaccurate or incomplete in any way for any reason.



QUEENSLAND DEPARTMENT OF PRIMARY INDUSTRIES  
COOYAR GRAZING LANDS STUDY  
**LAND SYSTEMS**

by B.E. VANDERSEE

SCALE 1:50 000  
METRES 1000 0 1 2 3 4 KILOMETRES

Drawn by R.D. McShea

COMPILATION by B.E. Vandersee, Division of Land Utilisation, Queensland Department of Primary Industries.  
PREPARED by Division of Land Utilisation, Queensland Department of Primary Industries.  
BASE compiled from maps supplied by Department of Mapping and Surveying.  
PRINTED at Government Printing Office, Brisbane 1977.