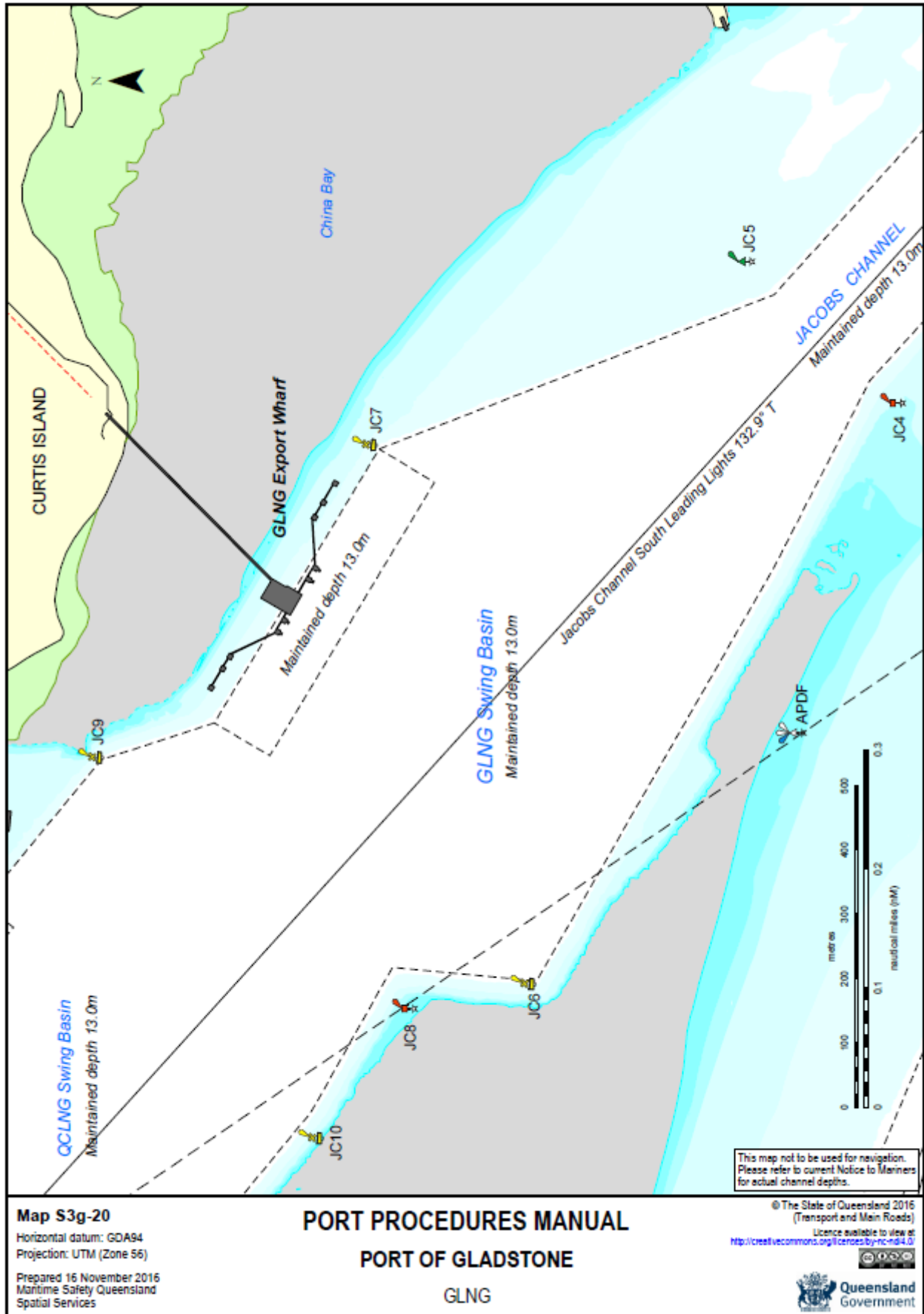
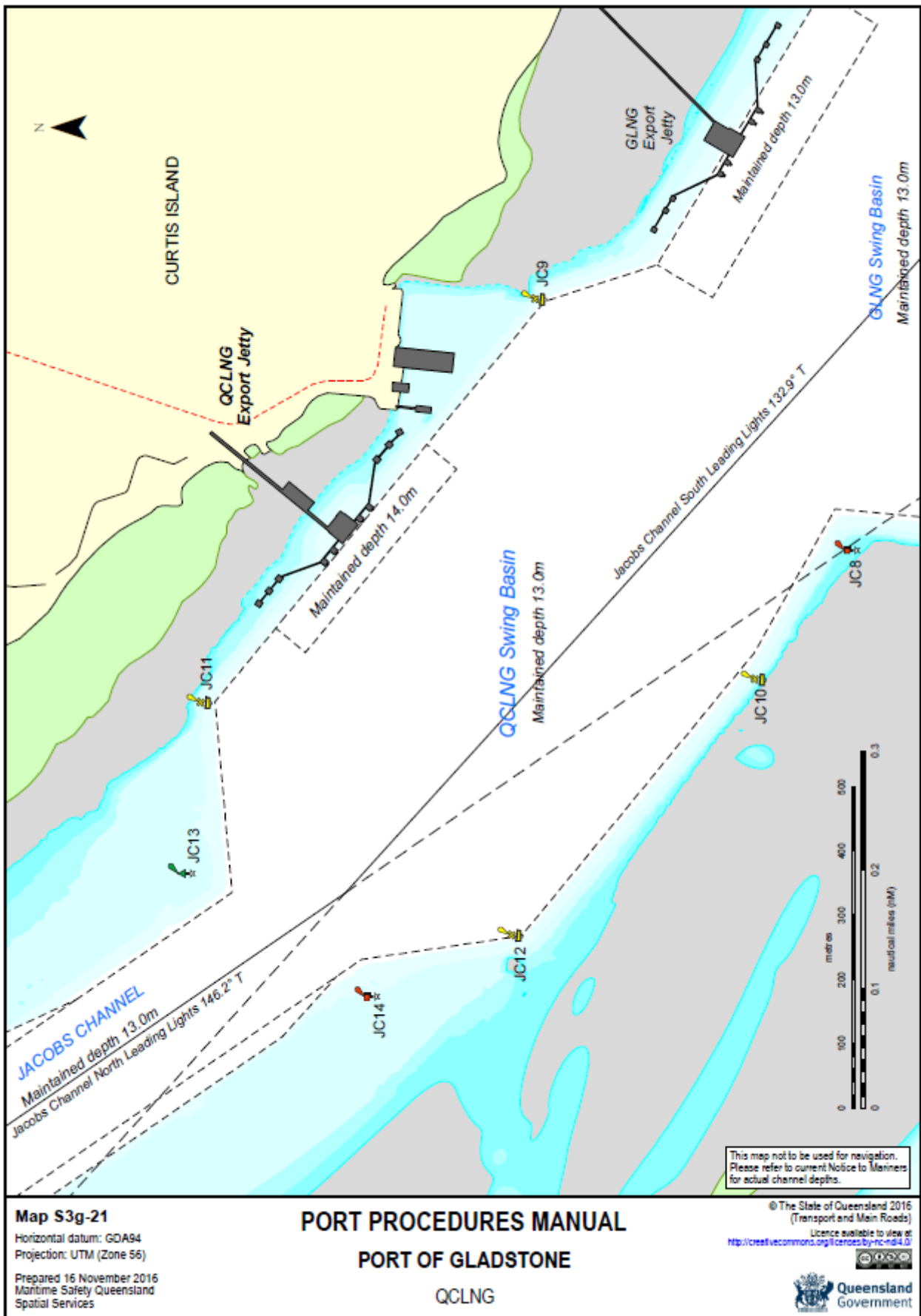
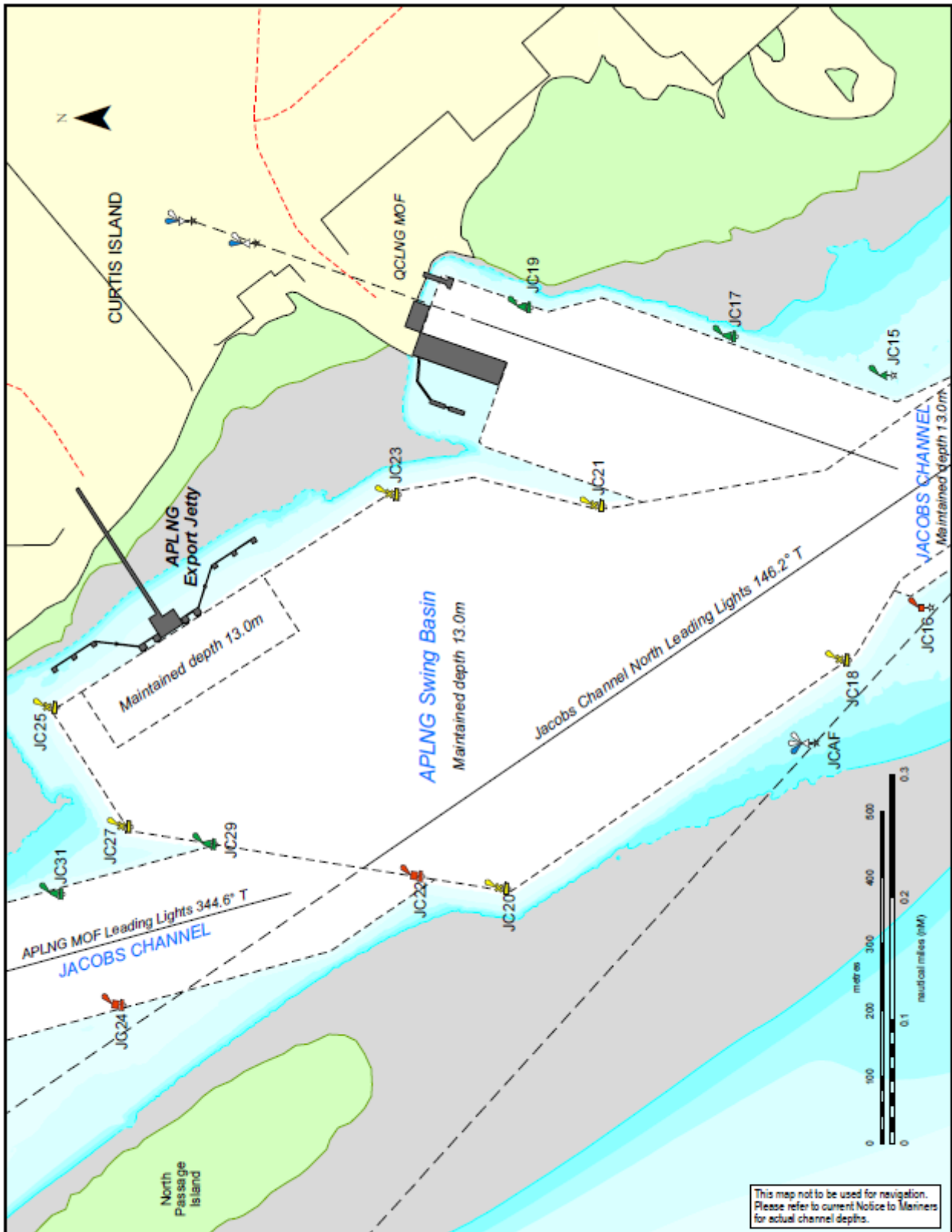


16.25 Pilotage – LNG Wharves







This map not to be used for navigation.
Please refer to current Notice to Mariners
for actual channel depths.

Map S3g-22

Horizontal datum: GDA94
Projection: UTM (Zone 56)

Prepared 16 November 2016
Maritime Safety Queensland
Spatial Services

PORT PROCEDURES MANUAL

PORT OF GLADSTONE

APLNG

© The State of Queensland 2016
(Transport and Main Roads)

Licence available to view at
<http://creativecommons.org/licenses/by-nc-nd/4.0/>

