



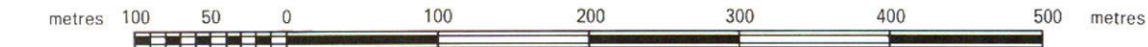
QUEENSLAND DEPARTMENT OF PRIMARY INDUSTRIES

SOUTH JOHNSTONE RESEARCH STATION

SOILS

by I.J.Heiner and C.D.Smith

SCALE 1:5000



GRID VALUES ARE 1000 METRE INTERVALS OF THE AUSTRALIAN MAP GRID, ZONE 55, CENTRAL MERIDIAN 147° E

TRANSVERSE MERCATOR PROJECTION

INTENSITY STATEMENT

This is a very high intensity soil survey. It is based on ground observations of the order of one observation to an area of 0.74 ha for the area suitable for agriculture.

© QUEENSLAND GOVERNMENT, 1987

REFERENCE

MAPPING UNIT	MAJOR ATTRIBUTES OF DOMINANT SOIL	GREAT SOIL GROUP ¹	PPF ²
--------------	-----------------------------------	-------------------------------	------------------

SOILS OF THE ROLLING TO STEEP LOW HILLS ON METAMORPHIC ROCKS

UPPER AND MID SLOPES

Ga	Galmara*	0.12-0.20m reddish ³ brown clay loam fine sandy A1 horizon over reddish ³ brown (moist) to pale (dry) A2 horizon to 0.20-0.35m over acid red to red-brown light to medium clay moderately pedal B horizon with metamorphic gravel throughout to 1.2+m.	Red podzolic soil	Gn3.84 Gn3.1 Gn3.14 Gn3.64
GaSp	Galmara, steep phase	as for Galmara series description with slopes >30% and shallower profiles.	Red podzolic soil	Gn3.84

LOWER AND MID SLOPES

Js	Johnstone	0.05-0.20m yellowish ³ brown clay loam A1 horizon over yellowish ³ brown (moist) to pale (dry) A2 horizon to 0.20-0.30m over acid, red mottled, yellow light to light medium clay moderately pedal B horizon with metamorphic gravel throughout to 1.2+m.	Yellow podzolic soil	Gn3.84
----	-----------	---	----------------------	--------

FANS

Ms	Mission*	0.20-0.25m red-brown clay loam fine sandy A horizon over acid red light clay apedal B horizon with metamorphic gravel to 1.2+m.	Red earth	Gn2.11
----	----------	---	-----------	--------

SOILS OF THE LEVEL TO GENTLY UNDULATING ALLUVIAL PLAINS

LEVEES

In	Innisfail*	0.15-0.40m reddish ³ brown light clay A horizon over acid brown to yellow-brown light clay moderately to strongly pedal B horizon to 1.2+m.	No suitable group	Uf6.31 Uf6.34
----	------------	--	-------------------	------------------

InRv	Innisfail, red B horizon variant	0.35-0.40m reddish ³ brown light clay A horizon over acid brown light clay moderately to strongly pedal B21 horizon to 0.70-1.00m over red light clay pedal B22 horizon to 1.2+m.	No suitable group	Uf6.31
------	----------------------------------	--	-------------------	--------

BACK PLAIN

Tu	Tully*	0.12-0.20m yellowish ³ brown light clay A horizon over acid yellow light to light medium clay moderately pedal B horizon to 1.2+m.	No suitable group, affinities with xanthozem	Uf6.34
----	--------	---	--	--------

TuMv	Tully, mottled variant	0.12-0.25m yellowish ³ brown light clay A horizon over acid red and orange mottled yellow light clay moderately pedal B horizon to 1.2+m.	No suitable group, affinities with xanthozem	Uf6.4
------	------------------------	--	--	-------

CHANNEL BENCH

Ll	Liverpool*	0.20-0.30m brown to dark sandy clay loam fine sandy to silty clay loam A horizon over acid brown to yellow loam fine sandy to clay loam fine sandy apedal B horizon to 0.35-0.40m over stratified C horizons.	No suitable group	Um5.52
----	------------	---	-------------------	--------

BAR

Ja	Japoon*	Brown single grained uniform coarse sand with pebbles throughout to 0.9+m.	Alluvial soil	Ucl.23
----	---------	--	---------------	--------

MISCELLANEOUS UNITS

SC	Stream channel	Steep river banks and channel.		
ML	Made land	Old built up road over Liverpool series.		

• S2 Soil sampling sites.

1 After *Stace et al* (1968). "A Handbook of Australian Soils".

2 Principal Profile Form (Northcote 1979).

3 The terms reddish (7.5YR hue) and yellowish (10YR hue) are used to qualify the surface soil colour names of Thompson, Baker and Cannon (1981).

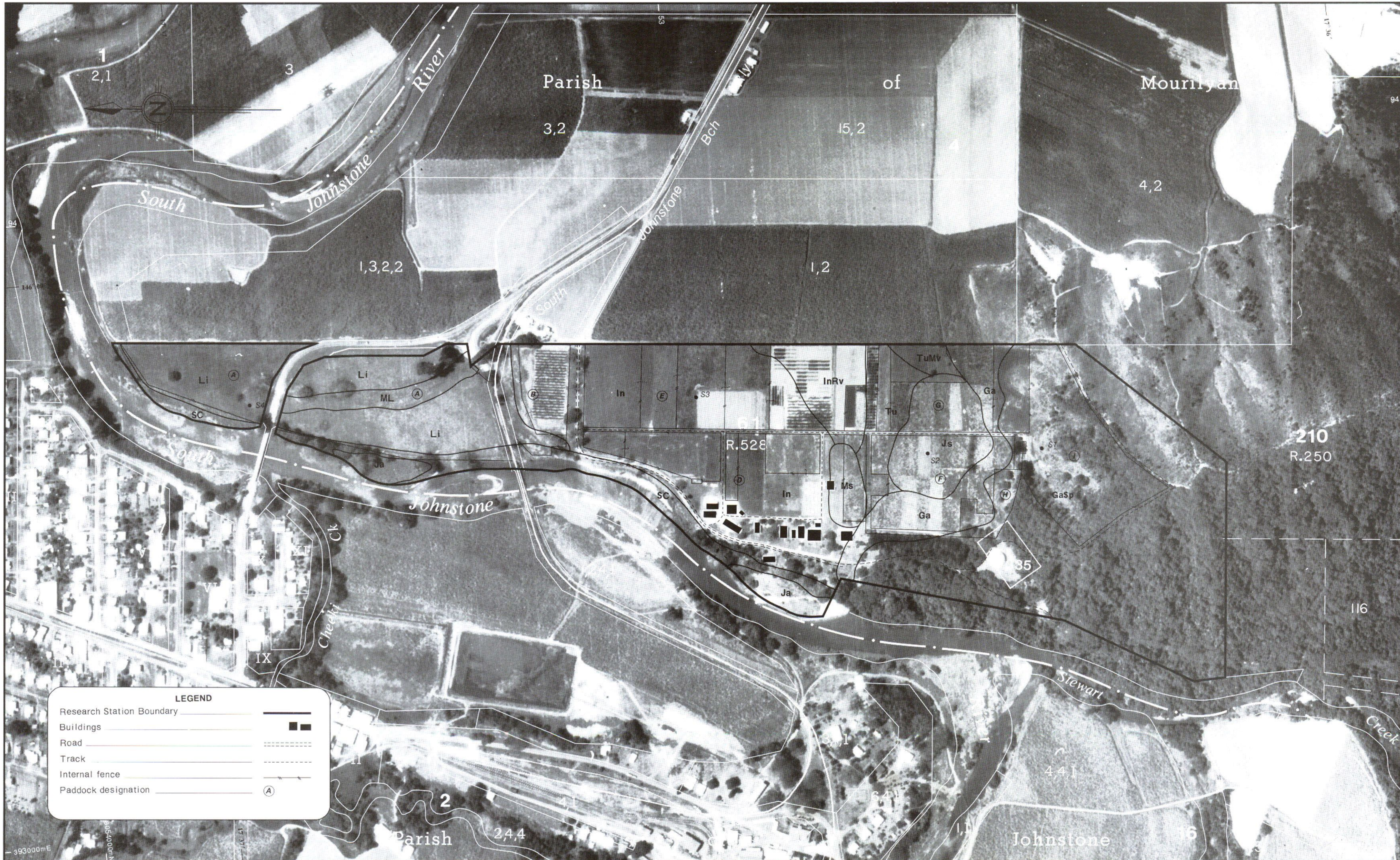
* Soils named after Murtha (1986).

SURVEY by I.J. Heiner and C.D. Smith, Land Resources Branch, Queensland Department of Primary Industries.

BASE MAP supplied by the Department of Mapping and Surveying, and reproduced with the permission of the Surveyor General, Queensland.

CARTOGRAPHY by M.J. Bryant, Land Resources Branch, Queensland Department of Primary Industries.

PRINTED at the Government Printing Office, Brisbane, 1987.



LEGEND

- Research Station Boundary
- Buildings
- Road
- Track
- Internal fence
- Paddock designation

DECLARATION: This is a scanned image and some detail may be illegible or lost. While every care is taken to ensure the accuracy of the information contained herein, the Queensland Department of Primary Industries does not accept any liability for any loss or damage, whether direct or indirect, arising from the use of this information. The Queensland Department of Primary Industries is not responsible for any loss or damage, whether direct or indirect, arising from the use of this information.