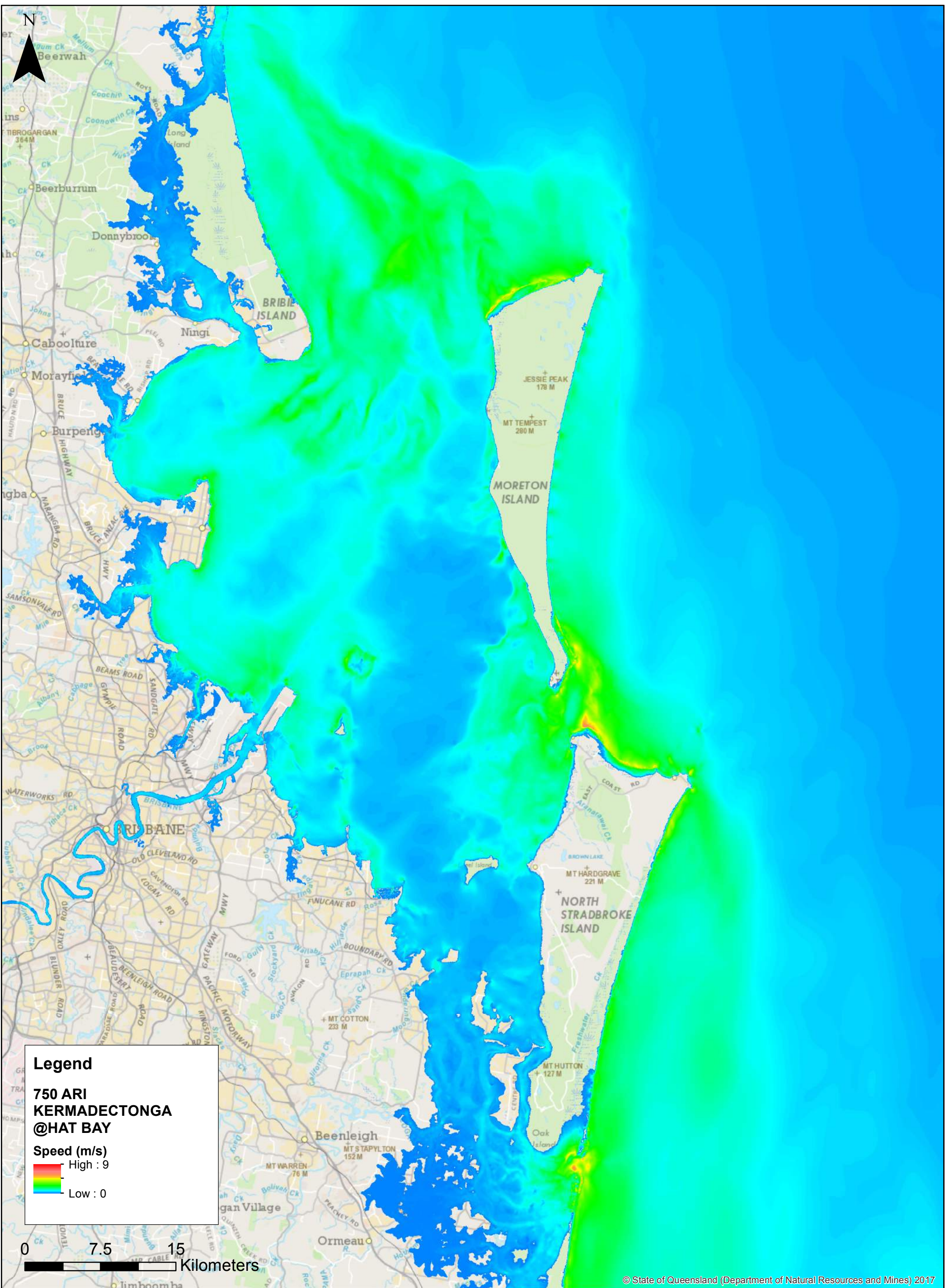


Tsunami Modelling
Moreton Bay

Maximum Wave Amplitude
750 ARI, Source: KERMADECTONGA,
HAT within the Bay

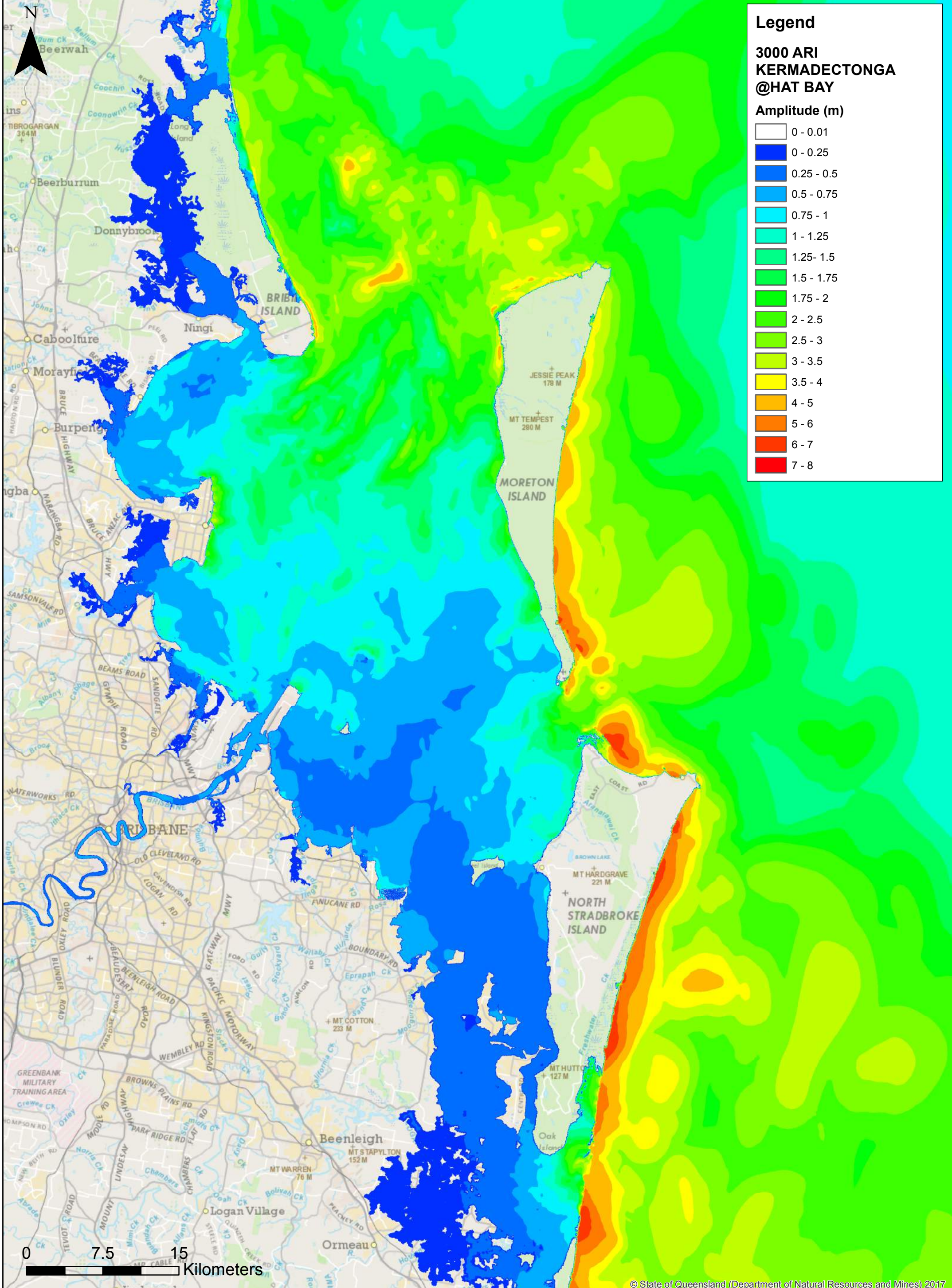




Tsunami Modelling
Moreton Bay

Maximum Current Speed
750 ARI, Source: KERMADECTONGA,
HAT within the Bay

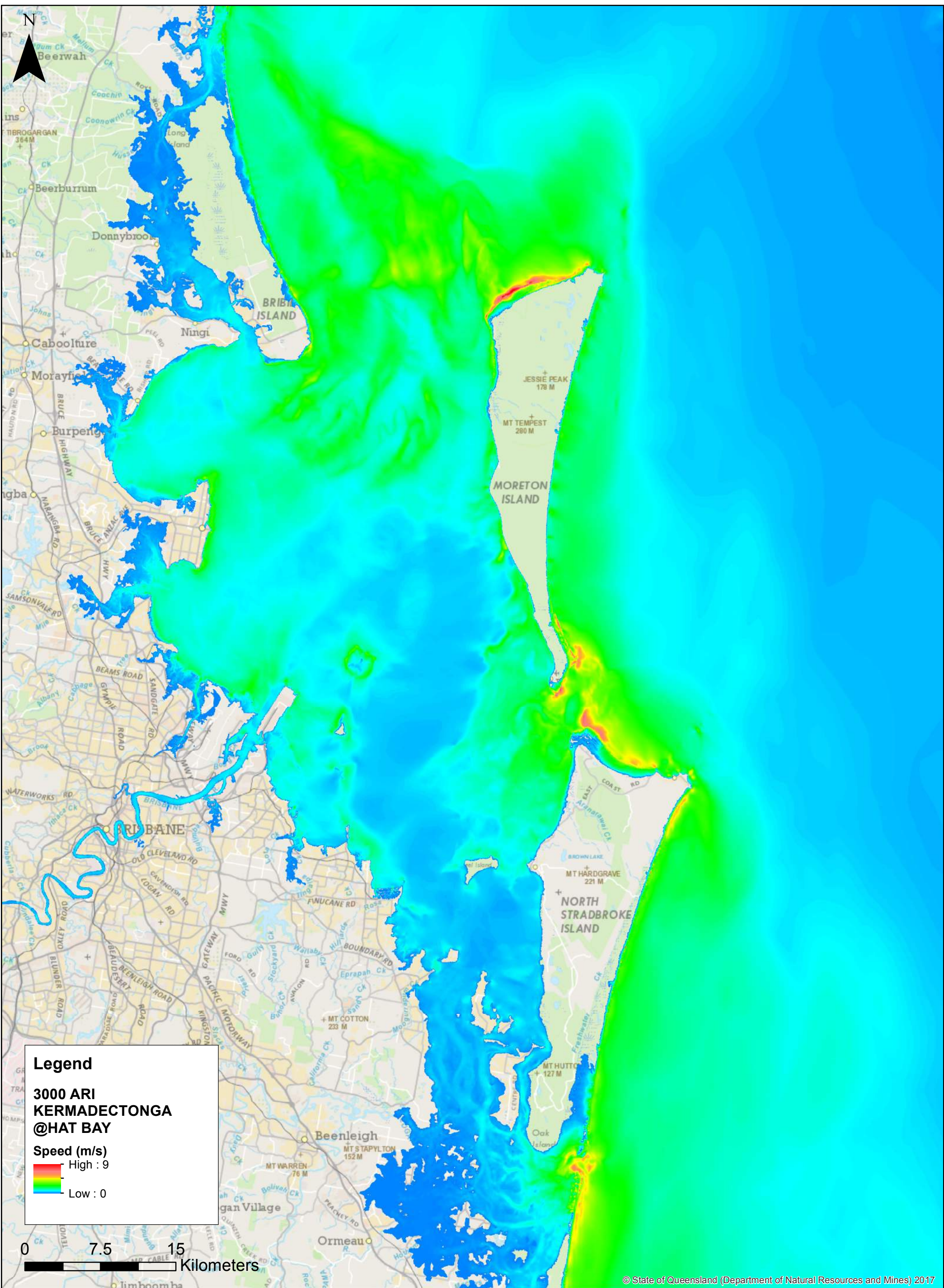




Tsunami Modelling
Moreton Bay

Maximum Wave Amplitude
3,000 ARI, Source: KERMADECTONGA,
HAT within the Bay

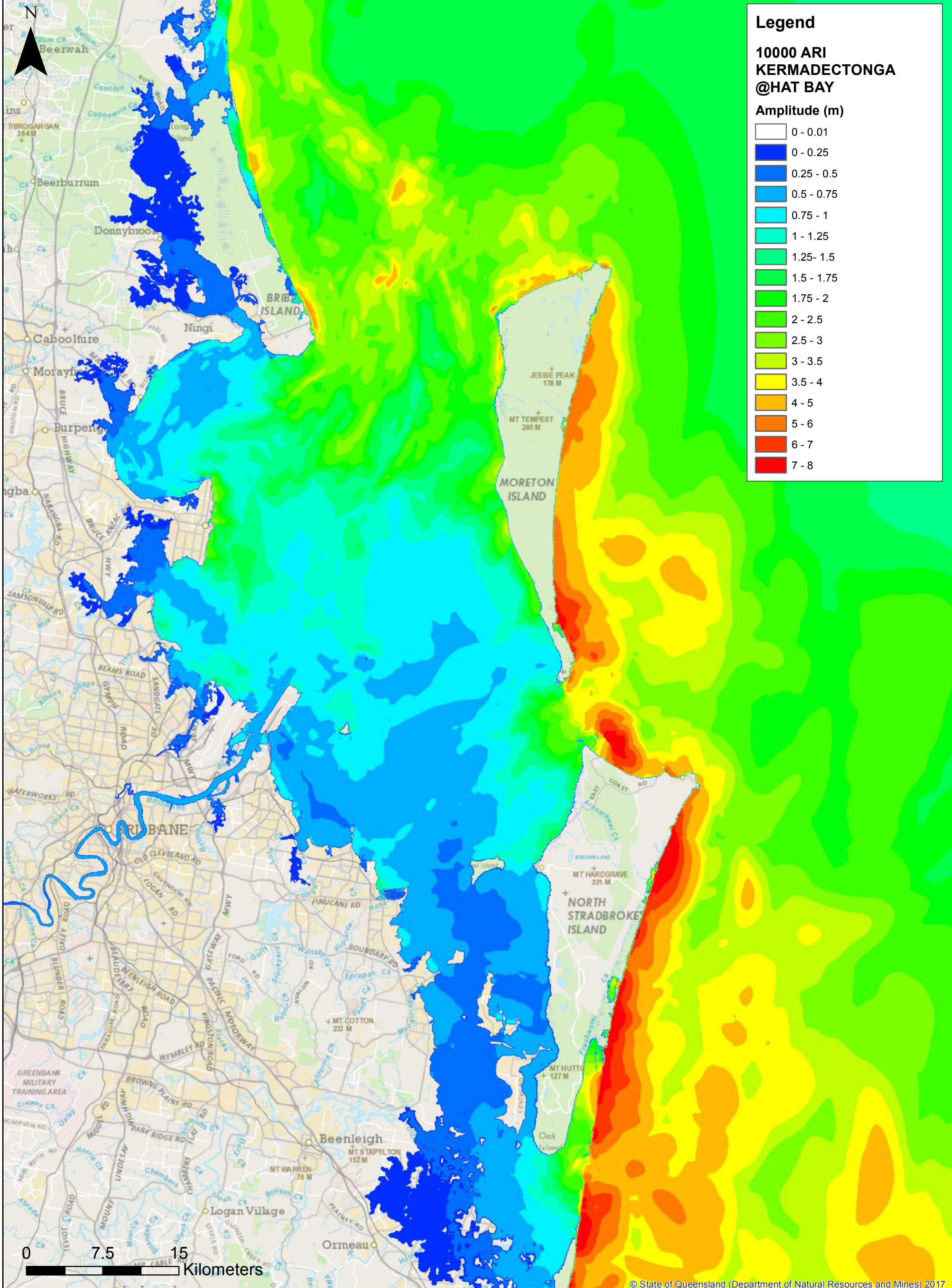




Tsunami Modelling
Moreton Bay

Maximum Current Speed
3,000 ARI, Source: KERMADECTONGA,
HAT within the Bay

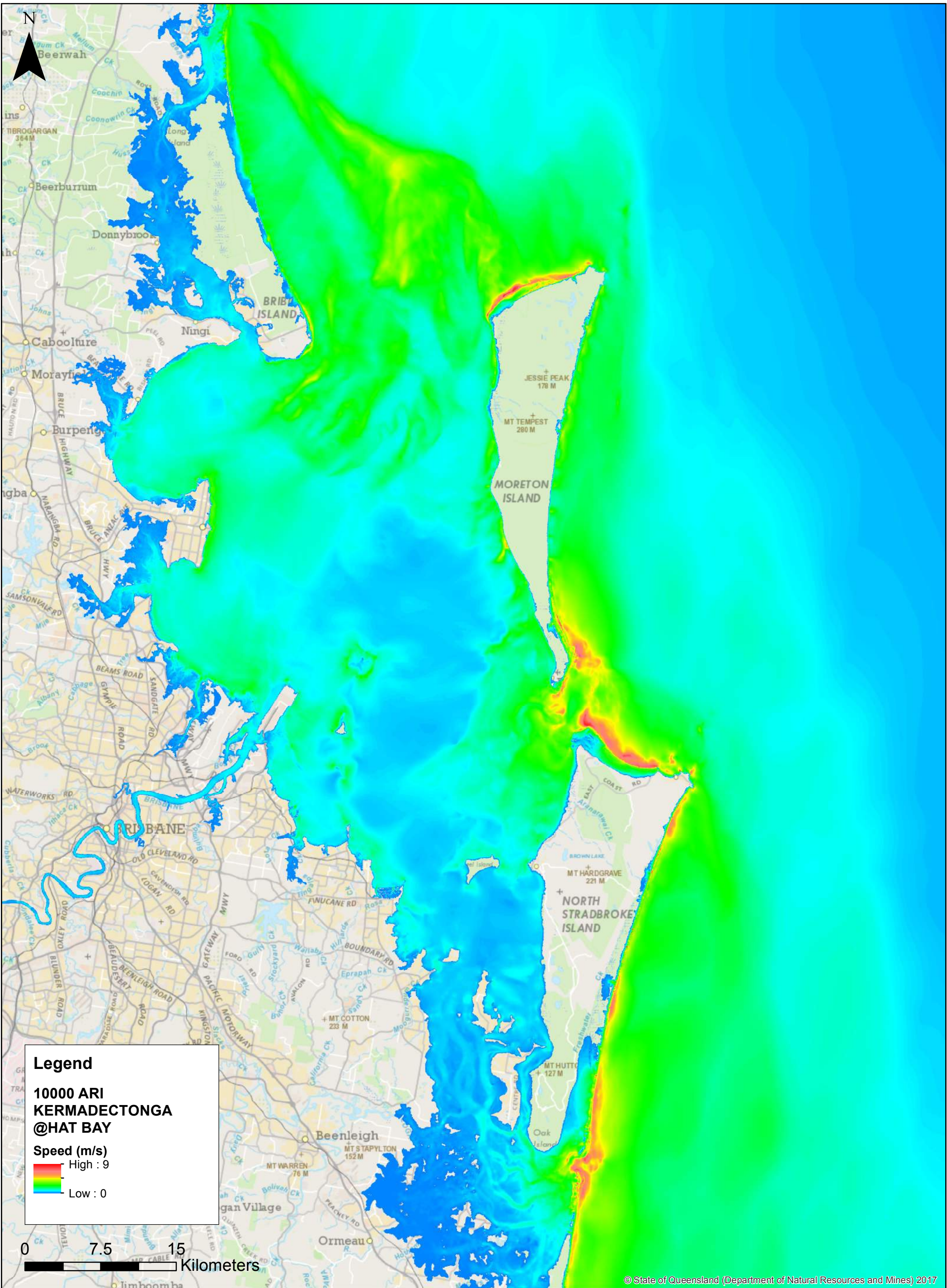




Tsunami Modelling
Moreton Bay

Maximum Wave Amplitude
10,000 ARI, Source: KERMADECTONGA,
HAT within the Bay

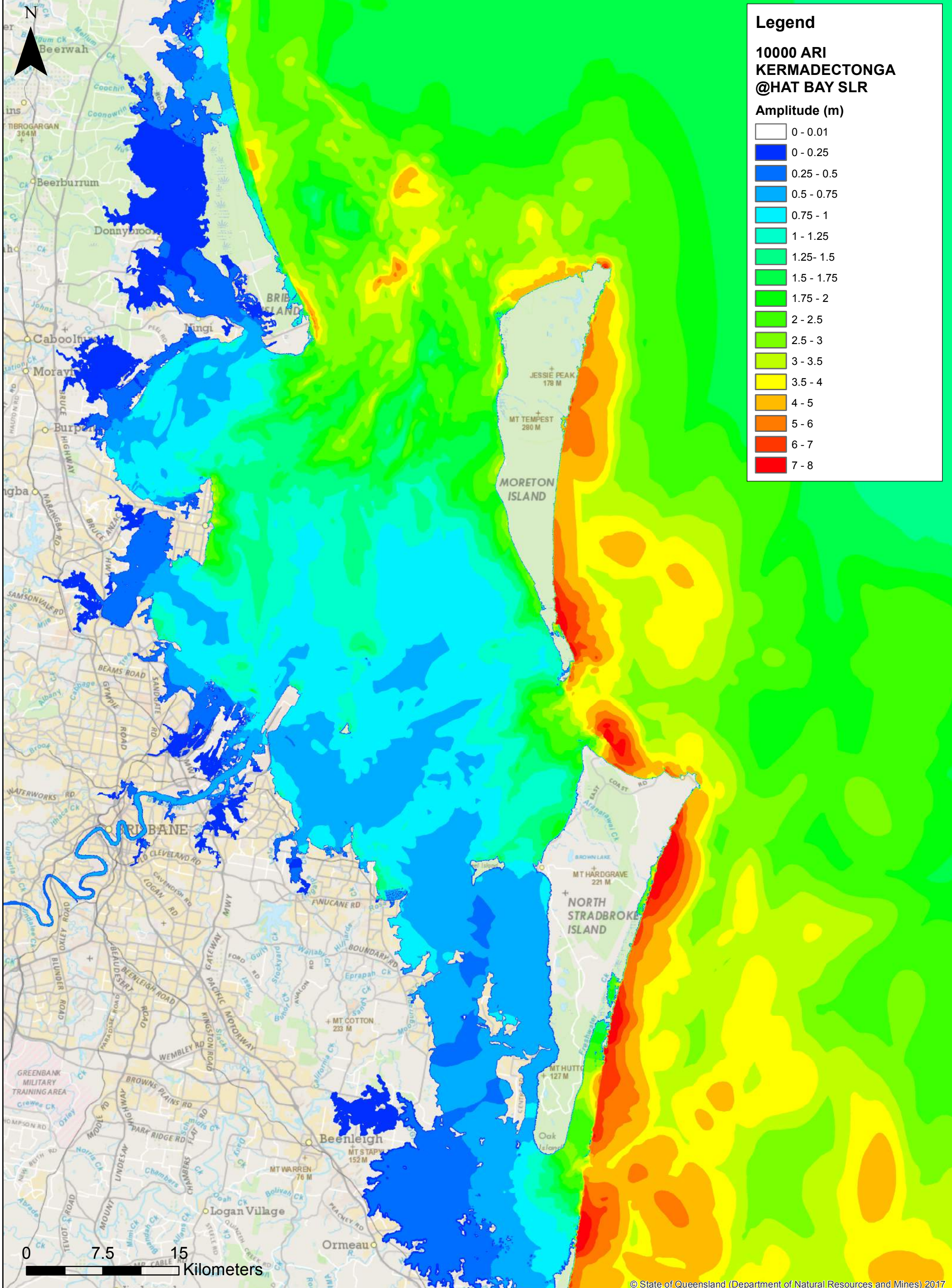




Tsunami Modelling
Moreton Bay

Maximum Current Speed
10,000 ARI, Source: KERMADECTONGA,
HAT within the Bay





Legend

**10000 ARI
KERMADECTONGA
@HAT BAY SLR**

Amplitude (m)

0 - 0.01
0 - 0.25
0.25 - 0.5
0.5 - 0.75
0.75 - 1
1 - 1.25
1.25 - 1.5
1.5 - 1.75
1.75 - 2
2 - 2.5
2.5 - 3
3 - 3.5
3.5 - 4
4 - 5
5 - 6
6 - 7
7 - 8

© State of Queensland (Department of Natural Resources and Mines) 2017

Tsunami Modelling
Moreton Bay

Maximum Wave Amplitude
10,000 ARI, Source: KERMADECTONGA,
HAT with SLR within the Bay

