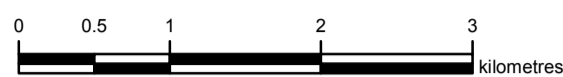


ACID SULFATE SOIL SAMPLING SITES CORIO BAY AREA

Scale 1:50 000



Projection: Universal Transverse Mercator (MGA Zone 56)
Horizontal Datum: Geocentric Datum of Australia (GDA94)
Note: This map is GDA compliant



REFERENCE

- Sample Site CQA 1099
- 5m AHD Contour
- Soil Boundary
- Digital Cadastral Database



CORAL SEA

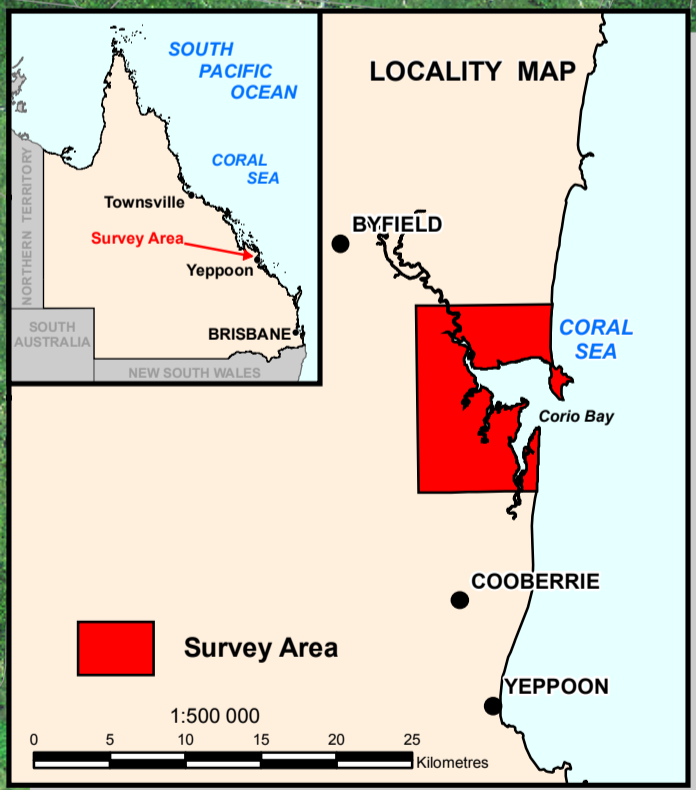
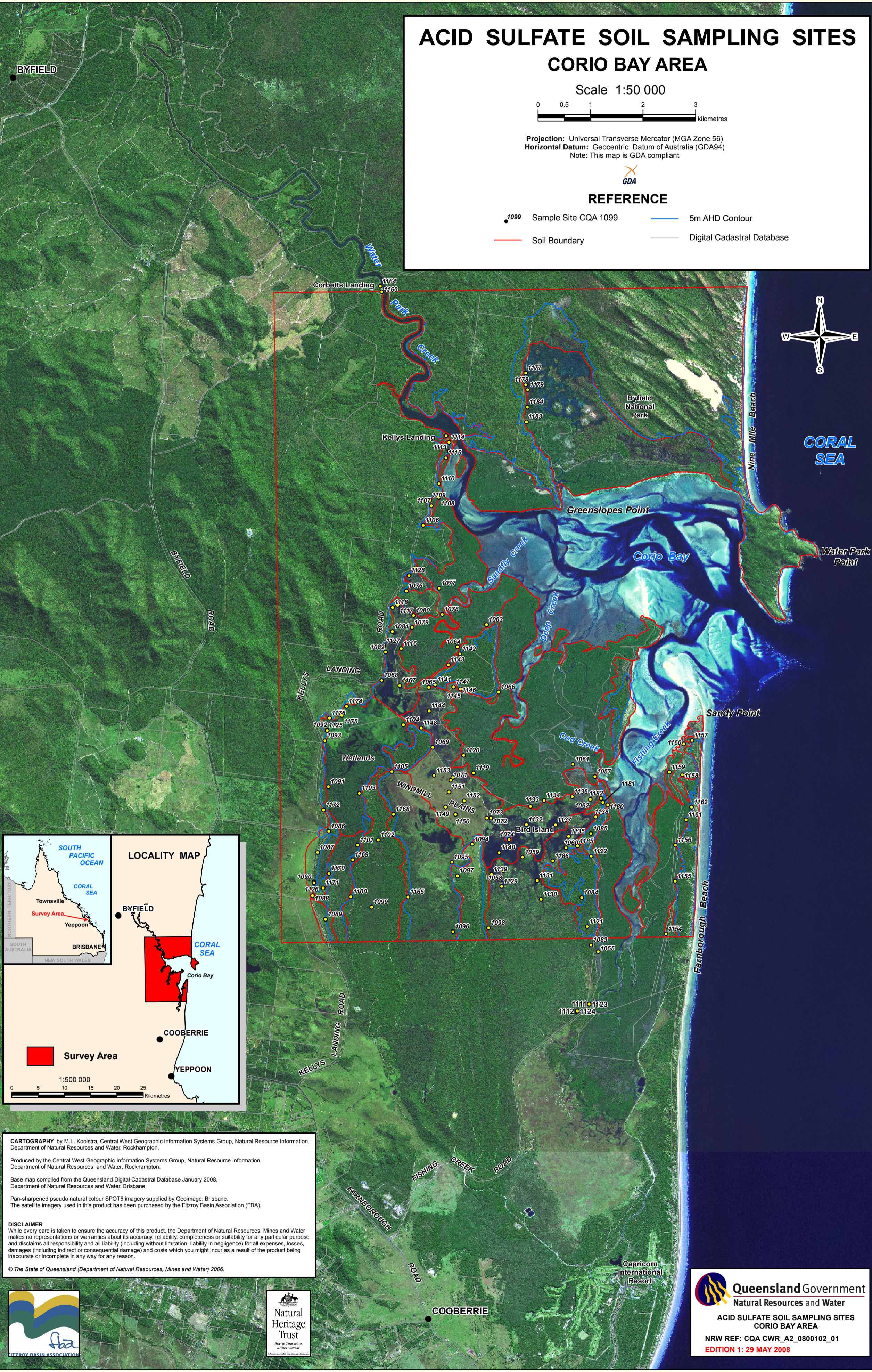
Water Park Point

Sandy Point

Fairborough Beach

Capricorn International Resort

COOBERRIE



CARTOGRAPHY by M.L. Kooistra, Central West Geographic Information Systems Group, Natural Resource Information, Department of Natural Resources and Water, Rockhampton.

Produced by the Central West Geographic Information Systems Group, Natural Resource Information, Department of Natural Resources, and Water, Rockhampton.

Base map compiled from the Queensland Digital Cadastral Database January 2008, Department of Natural Resources and Water, Brisbane.

Pan-sharpened pseudo natural colour SPOT5 imagery supplied by Geoinage, Brisbane. The satellite imagery used in this product has been purchased by the Fitzroy Basin Association (FBA).

DISCLAIMER
While every care is taken to ensure the accuracy of this product, the Department of Natural Resources, Mines and Water makes no representations or warranties about its accuracy, reliability, completeness or suitability for any particular purpose and disclaims all responsibility and all liability (including without limitation, liability in negligence) for all expenses, losses, damages (including indirect or consequential damage) and costs which you might incur as a result of the product being inaccurate or incomplete in any way for any reason.

© The State of Queensland (Department of Natural Resources, Mines and Water) 2006.



Queensland Government
Natural Resources and Water

ACID SULFATE SOIL SAMPLING SITES
CORIO BAY AREA

NRW REF: CQA CWR_A2_0800102_01
EDITION 1: 29 MAY 2008