

Important blue card information for Child Safety Officers



Foster or kinship carers

Foster and kinship carers are responsible for providing a safe environment for children and young people. It's important that they are given the correct information about blue card requirements.

Who needs a blue card and who doesn't need a blue card?

✓ Foster or kinship carers

Need a blue card



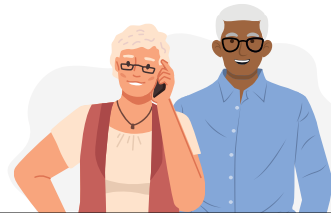
✓ Adult household members

Need a blue card



? Frequent visitors

May need a blue card: Check the [Child Safety Practice manual](#)



✓ Young household members turning 18

Need a blue card if they are living in a home where foster or kinship care is provided. To remain living in the home they must apply before they turn 18 (see s148D, [Child Protection Act 1999](#)).



They are able make a blue card application from when they are 17 years and 9 months old.

✗ Occasional visitors

Don't need a blue card.



✗ Parents

With a child in care who live-in, or regularly visit, their child's carer's home don't need a blue card.

For more information, contact the Community Information Team on **3211 6157**

