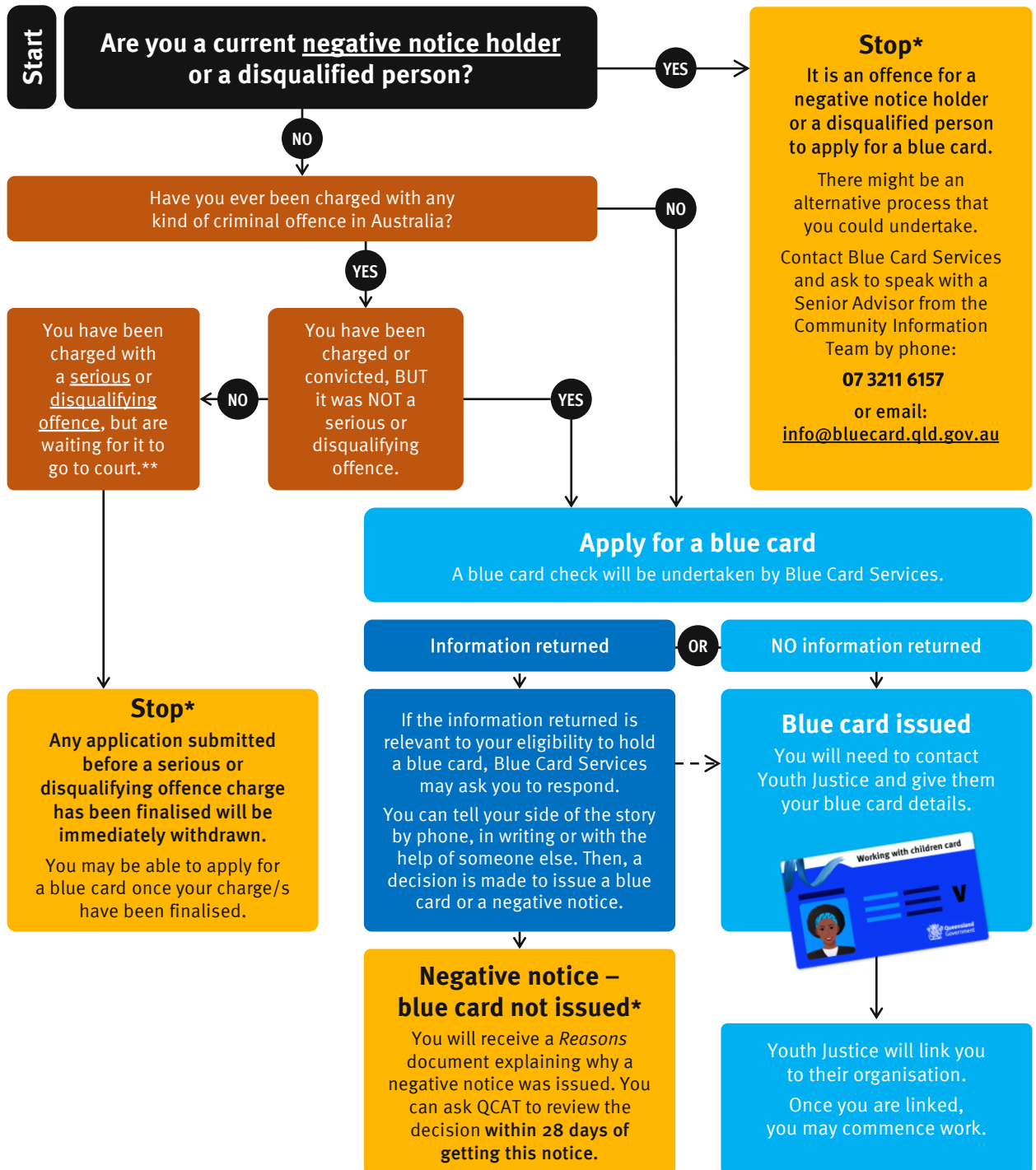


Thinking of working for Youth Justice?
You will need a blue card.

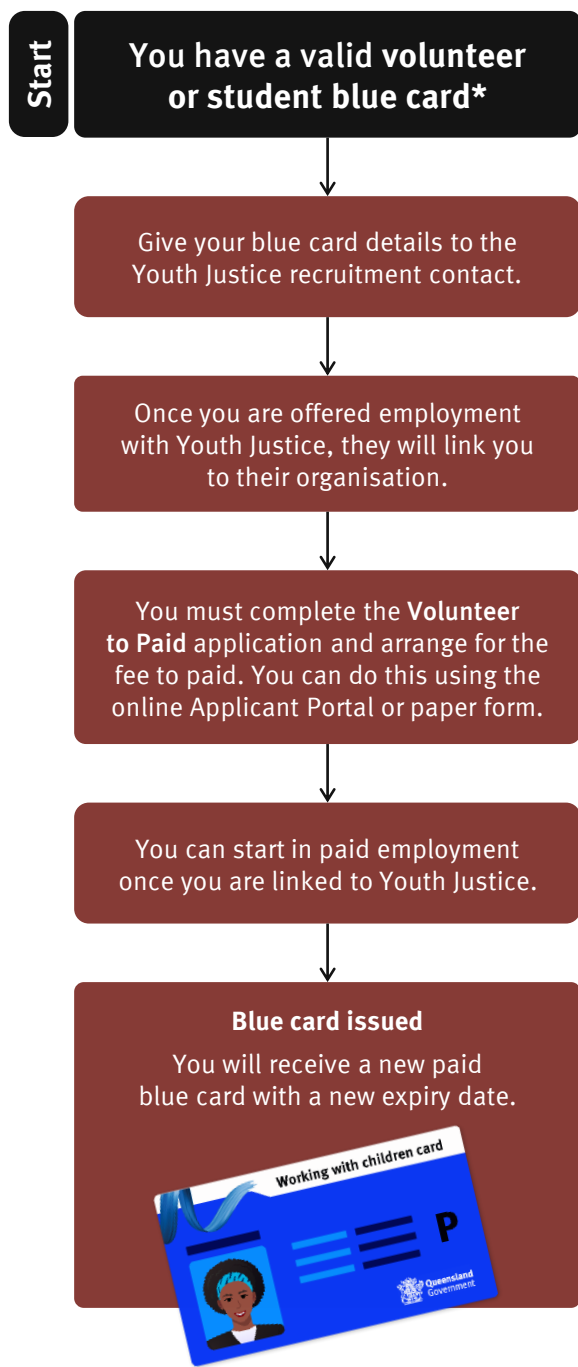


* You will need to contact Youth Justice regarding your ability to work with children and young people.

** More info about what is a serious or disqualifying offence can be found on our website: www.bluecard.qld.gov.au



Thinking of working for Youth Justice and already have a blue card?



* Remember to check your expiry date and renew your blue card before your card expires, so you can continue working while your application is being processed.

