

Maritime Safety Queensland



Urangan Pier

Beacon to Beacon Guide

Great Sandy Strait

Published by

Maritime Safety Queensland

© Copyright The State of Queensland
(Department of Transport and Main Roads) 2021



To view a copy of this licence, visit
<https://creativecommons.org/licenses/by/4.0/>

For commercial use terms and conditions

Please visit the Maritime Safety Queensland website at www.msq.qld.gov.au

'How to' use this guide

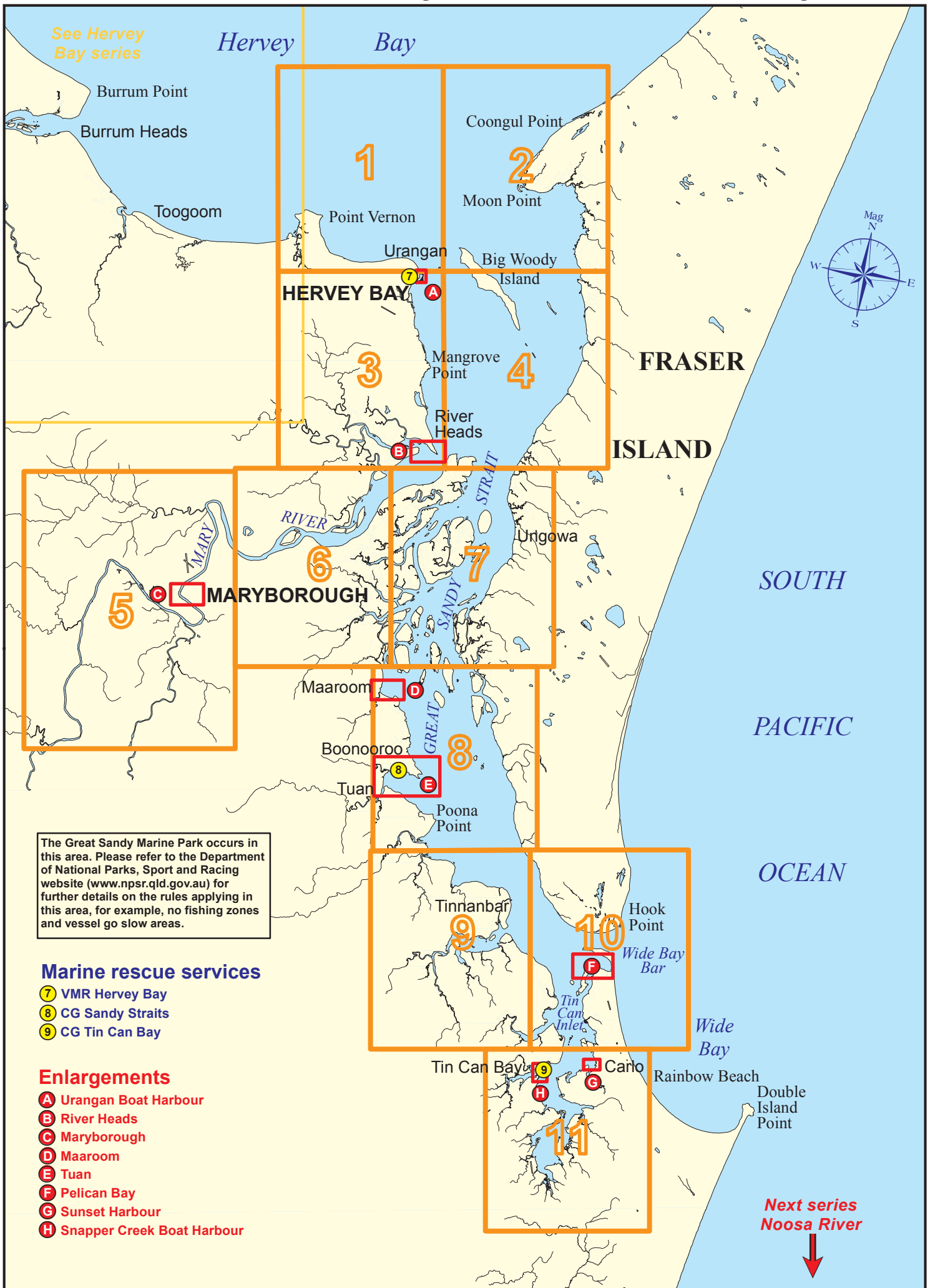
Use this Beacon to Beacon Guide with the 'How to' and legend booklet available from www.msq.qld.gov.au

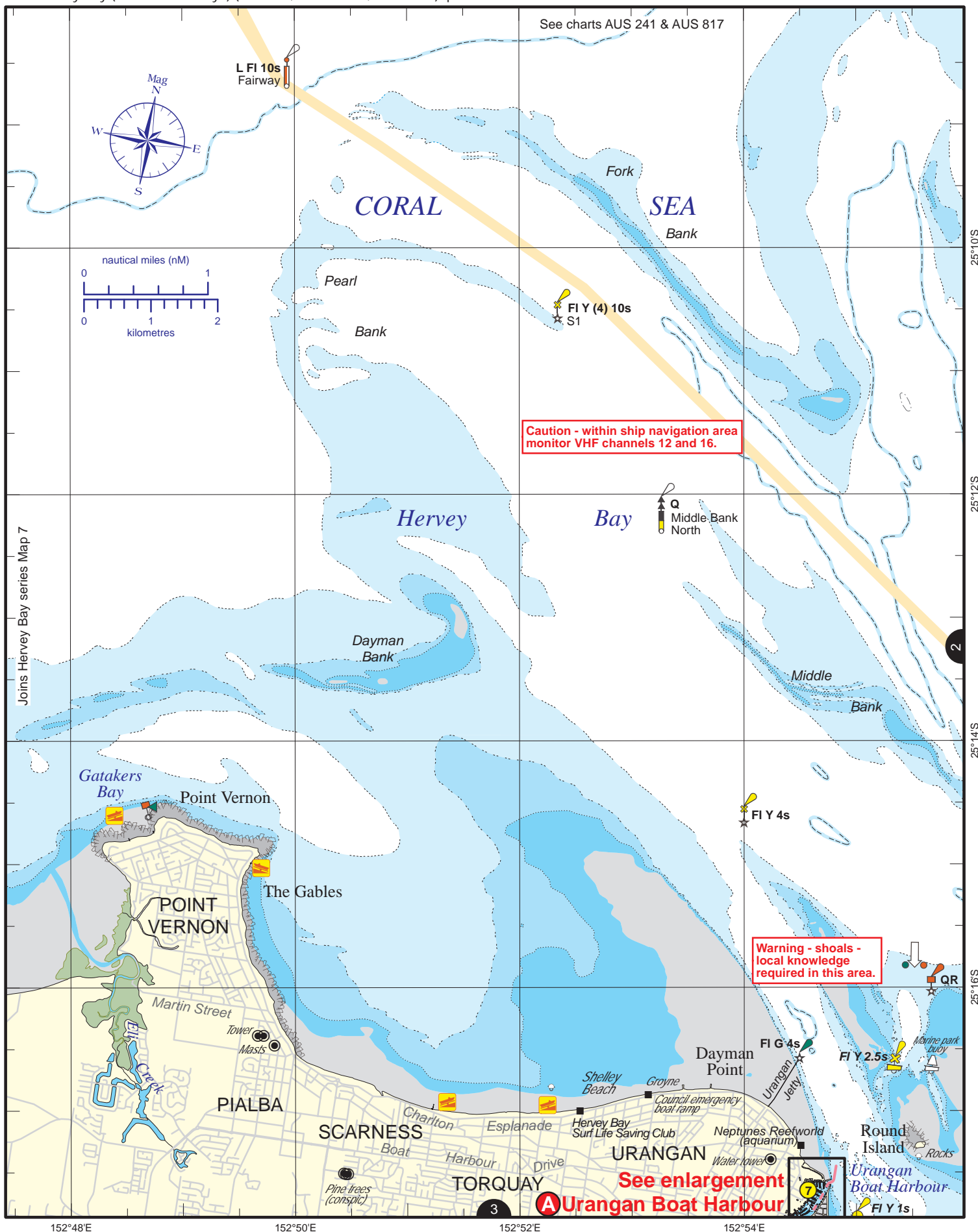


Queensland
Government

Great Sandy Strait

Key Sheet





Always keep a proper lookout when boating.

Look up and live for power and cable crossings that may not be shown on these maps due to scale or recent construction.

CAUTION: depth contours have not been re-surveyed in most areas since the 2011 and 2013 floods.

Exercise care when travelling outside suggested navigation tracks.

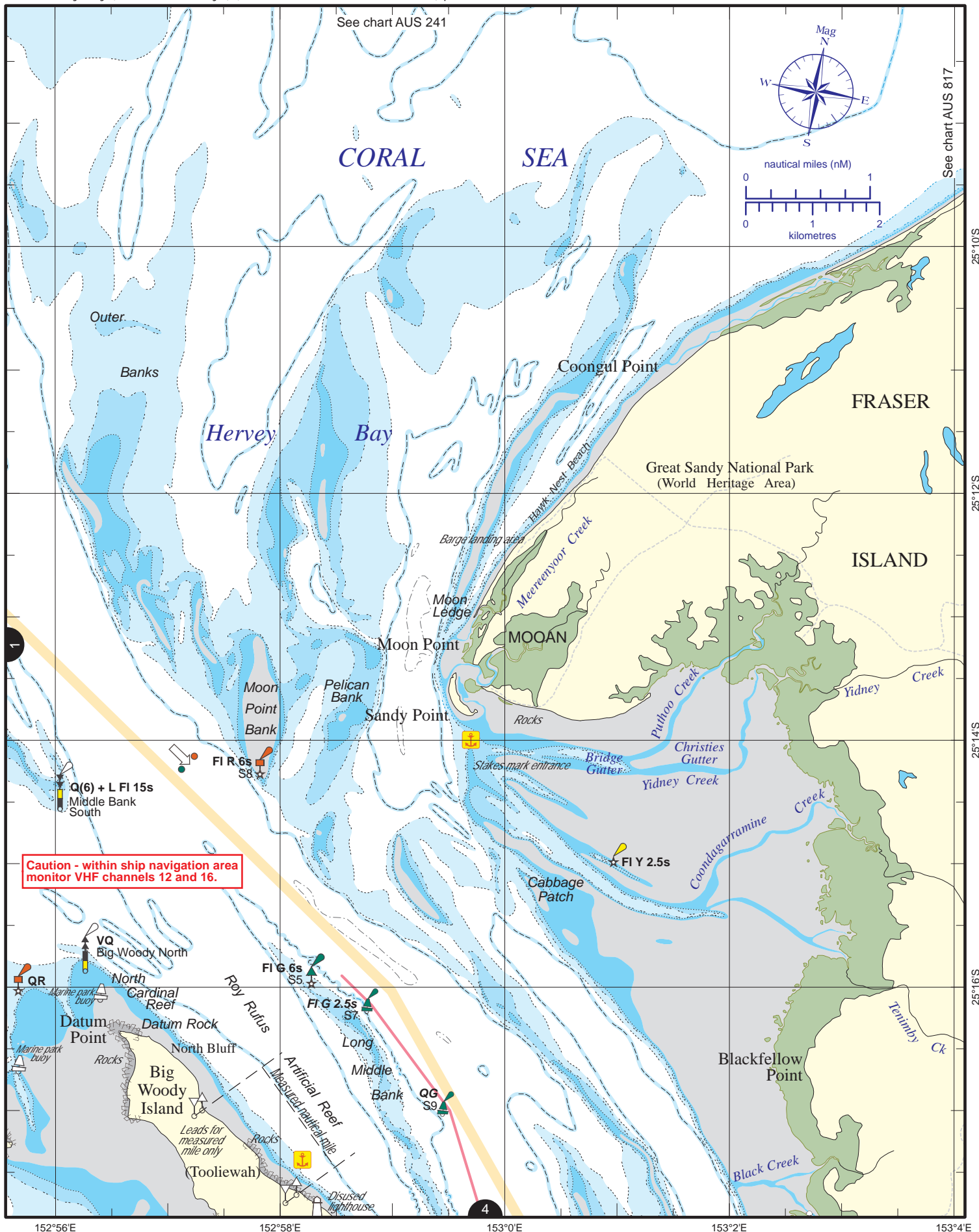
© Copyright The State of Queensland 2016

Queensland Department of Transport and Main Roads - Maritime Safety Queensland.

To reproduce any map within this series, see terms and conditions at Maritime Safety Queensland's website (www.msq.qld.gov.au)

Nautical information current to 28 January 2016





Always keep a proper lookout when boating.

Look up and live for power and cable crossings that may not be shown on these maps due to scale or recent construction.

CAUTION: depth contours have not been re-surveyed in most areas since the 2011 and 2013 floods.

Exercise care when travelling outside suggested navigation tracks.

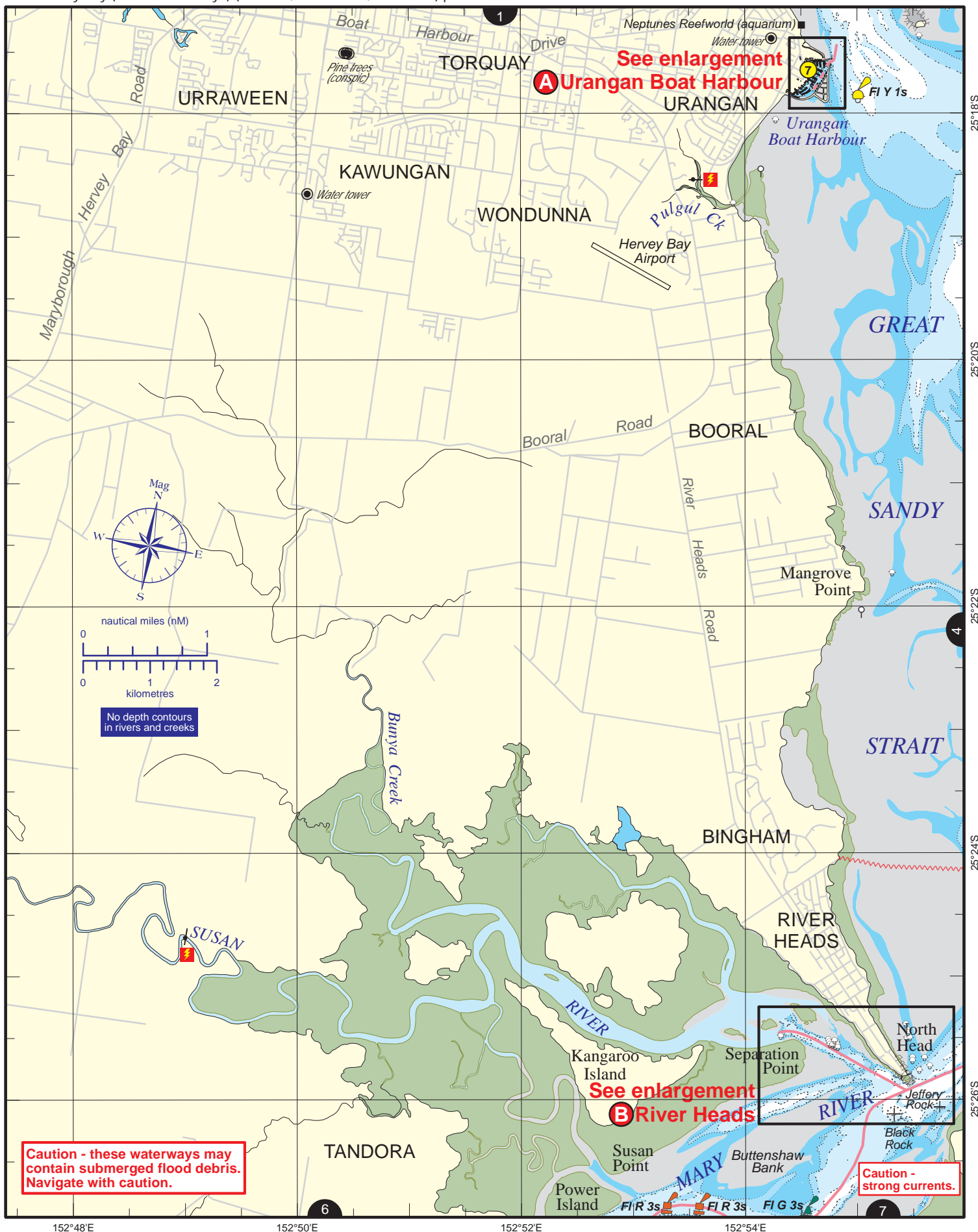
© Copyright The State of Queensland 2016

Queensland Department of Transport and Main Roads - Maritime Safety Queensland.

To reproduce any map within this series, see terms and conditions at Maritime Safety Queensland's website (www.msq.qld.gov.au)

Nautical information current to 28 January 2016





Always keep a proper lookout when boating.

Look up and live for power and cable crossings that may not be shown on these maps due to scale or recent construction.

CAUTION: depth contours have not been re-surveyed in most areas since the 2011 and 2013 floods.

Exercise care when travelling outside suggested navigation tracks.

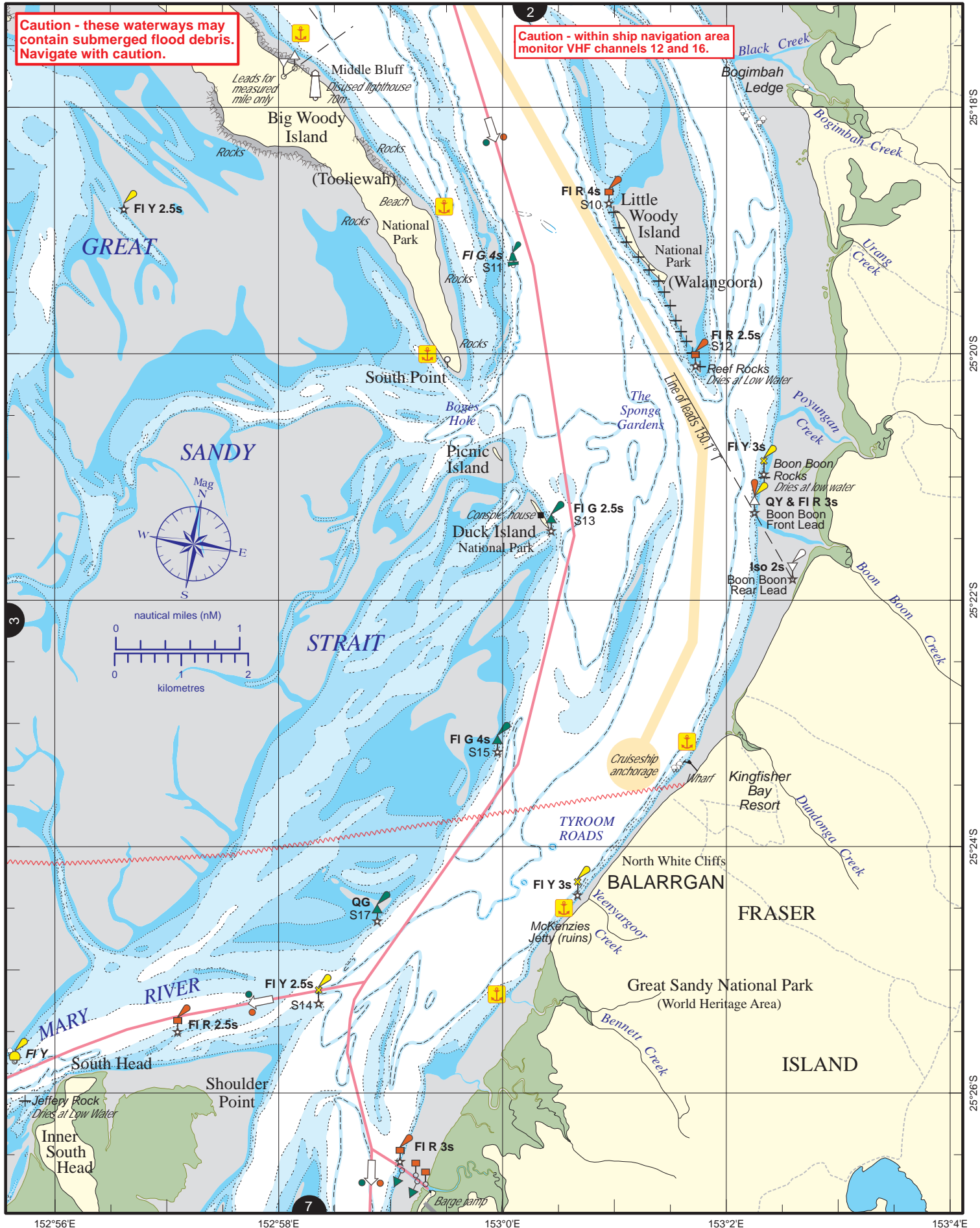
© Copyright The State of Queensland 2016

Queensland Department of Transport and Main Roads - Maritime Safety Queensland.

To reproduce any map within this series, see terms and conditions at Maritime Safety Queensland's website (www.msq.qld.gov.au)

Nautical information current to 28 January 2016





Always keep a proper lookout when boating.

Look up and live for power and cable crossings that may not be shown on these maps due to scale or recent construction.

CAUTION: depth contours have not been re-surveyed in most areas since the 2011 and 2013 floods.

Exercise care when travelling outside suggested navigation tracks.

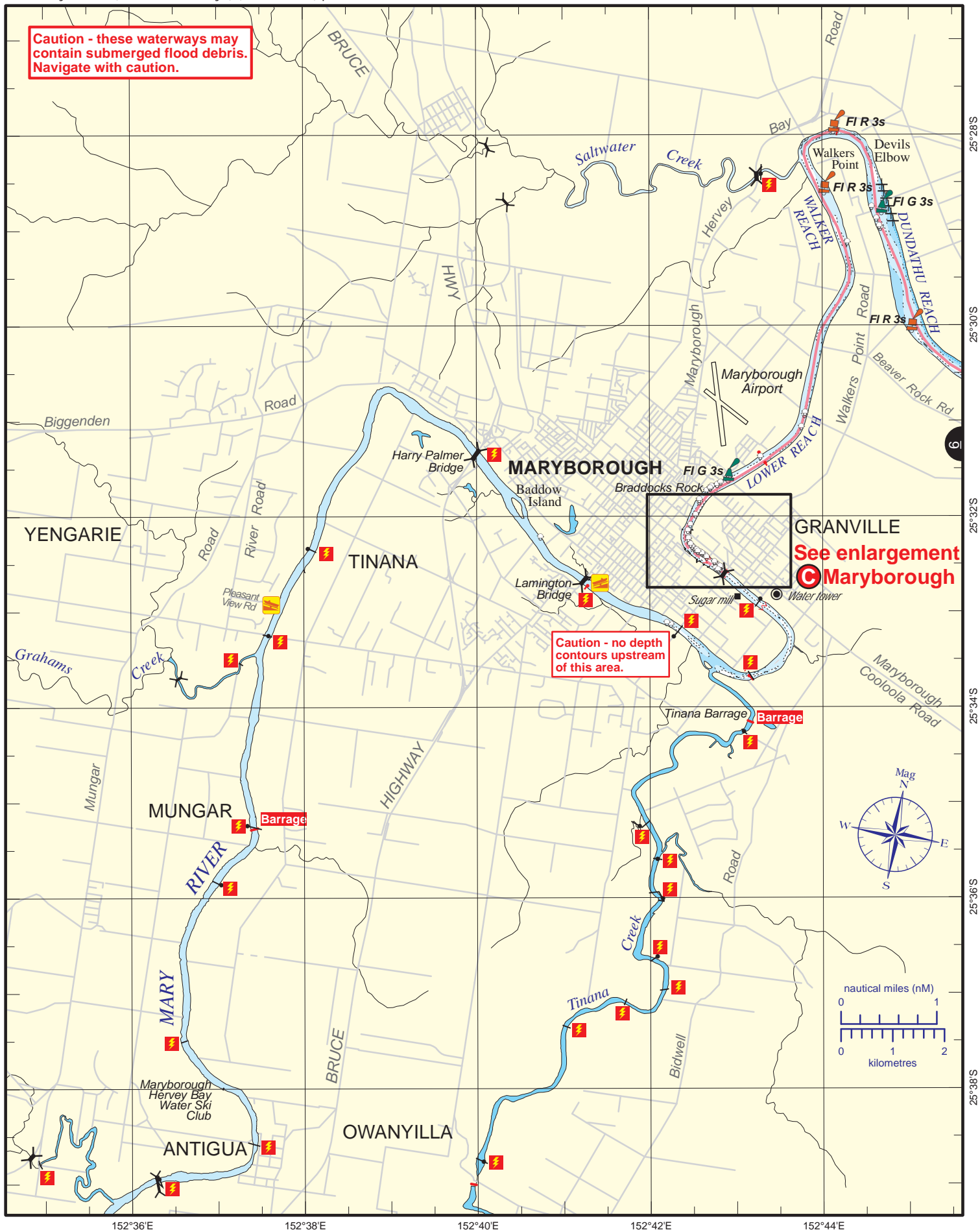
© Copyright The State of Queensland 2016

Queensland Department of Transport and Main Roads - Maritime Safety Queensland.

To reproduce any map within this series, see terms and conditions at Maritime Safety Queensland's website (www.msq.qld.gov.au)

Nautical information current to 28 January 2016





Always keep a proper lookout when boating.

Look up and live for power and cable crossings that may not be shown on these maps due to scale or recent construction.

CAUTION: depth contours have not been re-surveyed in most areas since the 2011 and 2013 floods.

Exercise care when travelling outside suggested navigation tracks.

© Copyright The State of Queensland 2016

Queensland Department of Transport and Main Roads - Maritime Safety Queensland.

To reproduce any map within this series, see terms and conditions at Maritime Safety Queensland's website (www.msq.qld.gov.au)

Nautical information current to 28 January 2016





Always keep a proper lookout when boating.

Look up and live for power and cable crossings that may not be shown on these maps due to scale or recent construction.

CAUTION: depth contours have not been re-surveyed in most areas since the 2011 and 2013 floods.

Exercise care when travelling outside suggested navigation tracks.

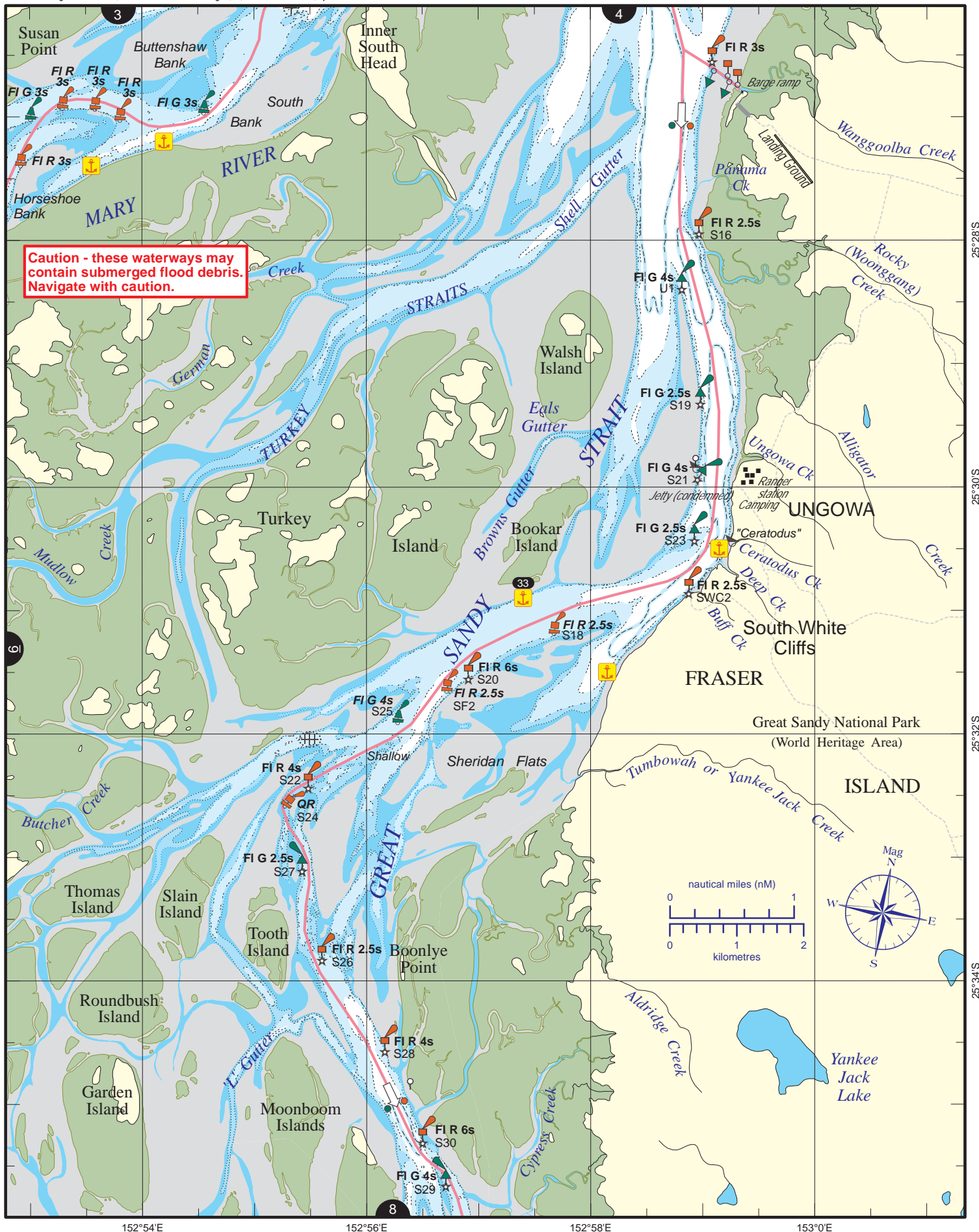
© Copyright The State of Queensland 2016

Queensland Department of Transport and Main Roads - Maritime Safety Queensland.

To reproduce any map within this series, see terms and conditions at Maritime Safety Queensland's website (www.msq.qld.gov.au)

Nautical information current to 28 January 2016





Always keep a proper lookout when boating.

Look up and live for power and cable crossings that may not be shown on these maps due to scale or recent construction.

CAUTION: depth contours have not been re-surveyed in most areas since the 2011 and 2013 floods.

Exercise care when travelling outside suggested navigation tracks.

© Copyright The State of Queensland 2016

Queensland Department of Transport and Main Roads - Maritime Safety Queensland.

To reproduce any map within this series, see terms and conditions at Maritime Safety Queensland's website (www.msq.qld.gov.au)

Nautical information current to 28 January 2016





Always keep a proper lookout when boating.

Look up and live for power and cable crossings that may not be shown on these maps due to scale or recent construction.

CAUTION: depth contours have not been re-surveyed in most areas since the 2011 and 2013 floods.

Exercise care when travelling outside suggested navigation tracks.

© Copyright The State of Queensland 2016

Queensland Department of Transport and Main Roads - Maritime Safety Queensland.

To reproduce any map within this series, see terms and conditions at Maritime Safety Queensland's website (www.msq.qld.gov.au)

Nautical information current to 28 January 2016





Nautical information current to 28 January 2016

CAUTION: depth contours have not been re-surveyed in most areas since the 2011 and 2013 floods.

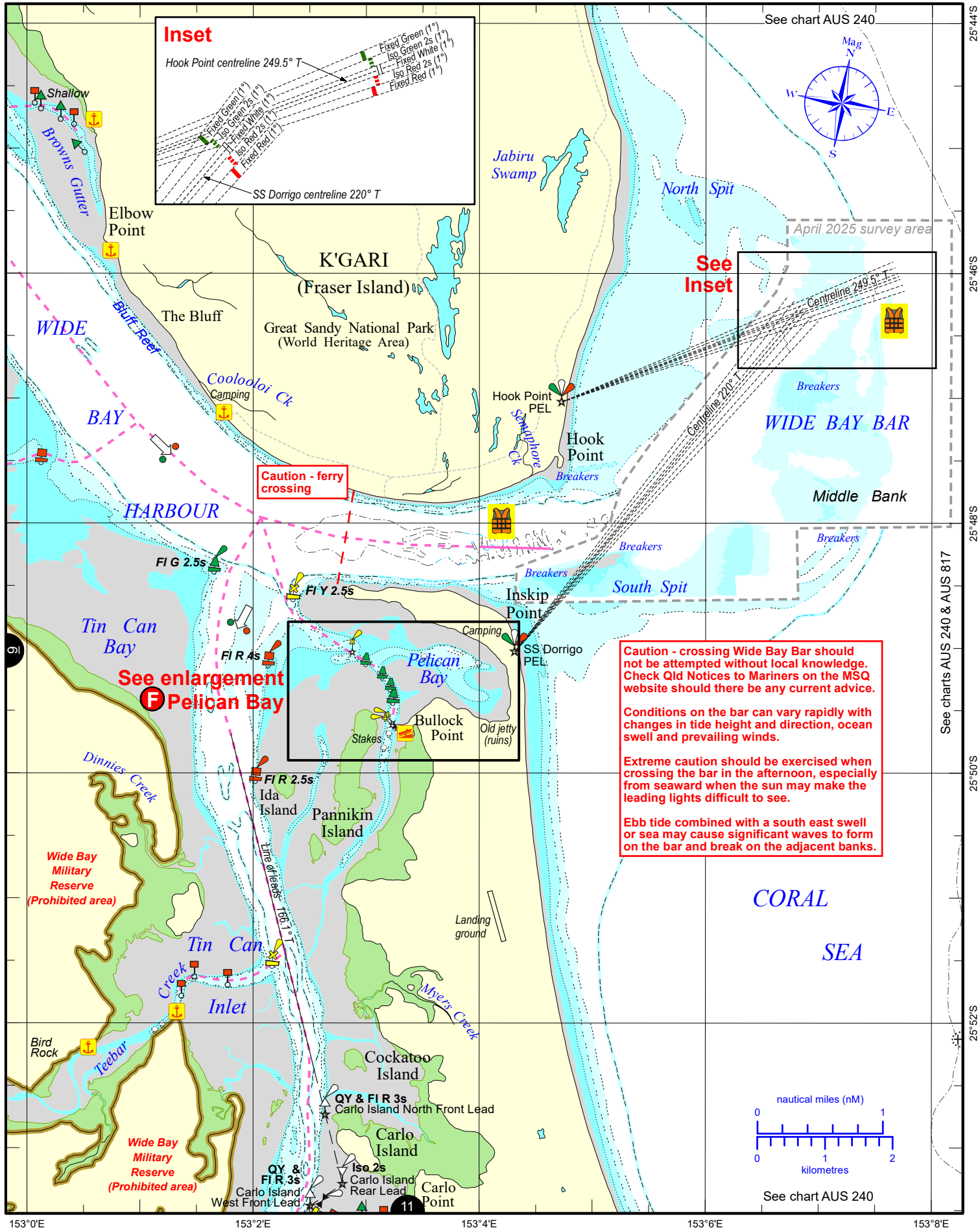
Exercise care when travelling outside suggested navigation tracks.

© Copyright The State of Queensland 2016

Queensland Department of Transport and Main Roads - Maritime Safety Queensland.

To reproduce any map within this series, see terms and conditions at Maritime Safety Queensland's website (www.msg.qld.gov.au)





Always keep a proper lookout when boating. Exercise care at all times.

Look up and live for power and cable crossings that may not be shown on these maps due to scale or recent construction.

CAUTION: Limited depth contour data is available for part of these waters. (Refer to the Key Sheet for this guide to determine date of survey information). Note that depths may change following floods.

Exercise care when travelling outside suggested navigation tracks.

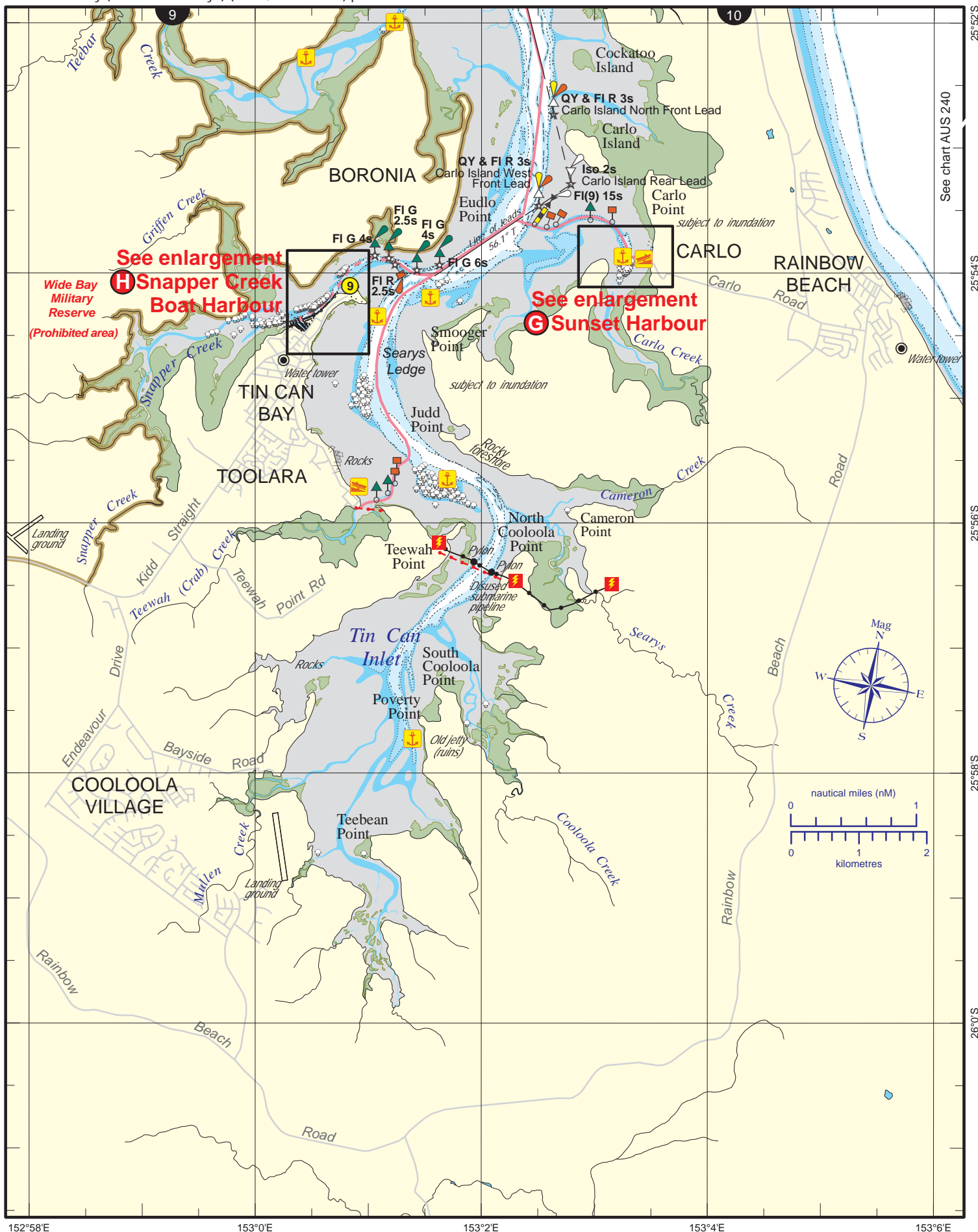
© Copyright The State of Queensland 2025

Queensland Department of Transport and Main Roads - Maritime Safety Queensland.

To reproduce any map within this series, see terms and conditions at Maritime Safety Queensland's website (www.msq.qld.gov.au)

Nautical information current to 30 June 2025





Always keep a proper lookout when boating.

Nautical information current to 28 January 2016

Look up and live for power and cable crossings that may not be shown on these maps due to scale or recent construction.

CAUTION: depth contours have not been re-surveyed in most areas since the 2011 and 2013 floods.

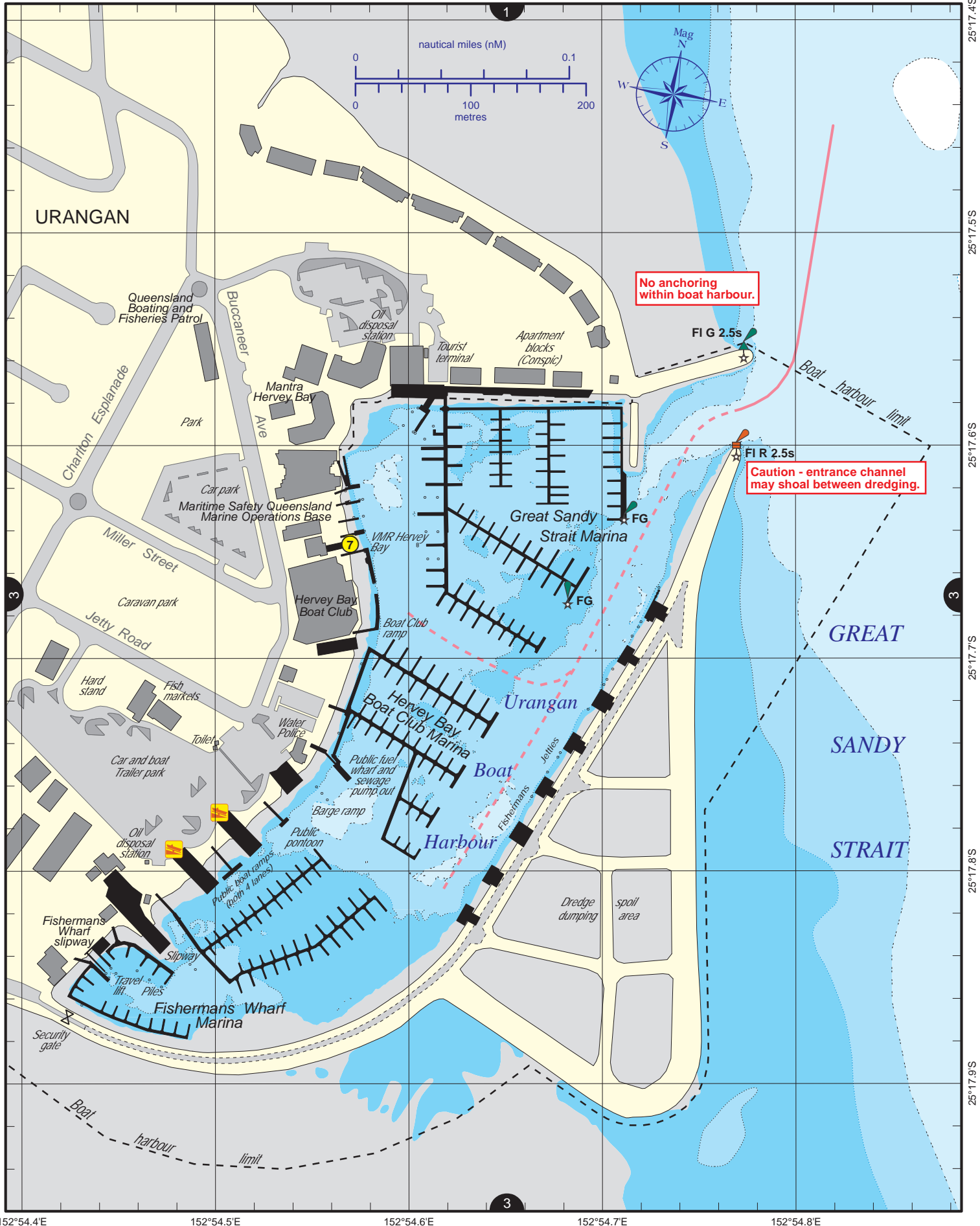
Exercise care when travelling outside suggested navigation tracks.

© Copyright The State of Queensland 2016

Queensland Department of Transport and Main Roads - Maritime Safety Queensland.

To reproduce any map within this series, see terms and conditions at Maritime Safety Queensland's website (www.msq.qld.gov.au)





Always keep a proper lookout when boating.

Look up and live for power and cable crossings that may not be shown on these maps due to scale or recent construction.

CAUTION: depth contours have not been re-surveyed in most areas since the 2011 and 2013 floods.

Exercise care when travelling outside suggested navigation tracks.

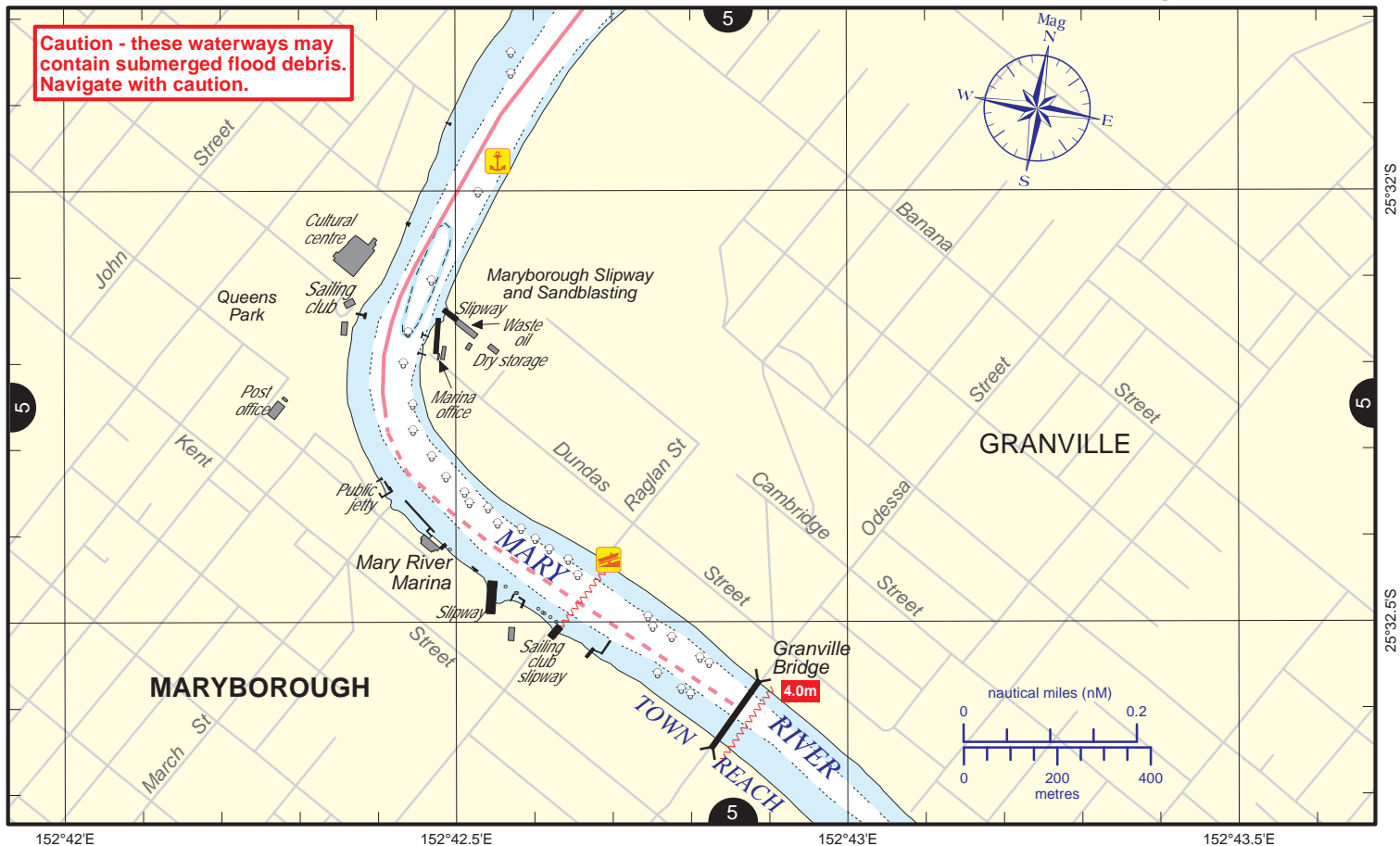
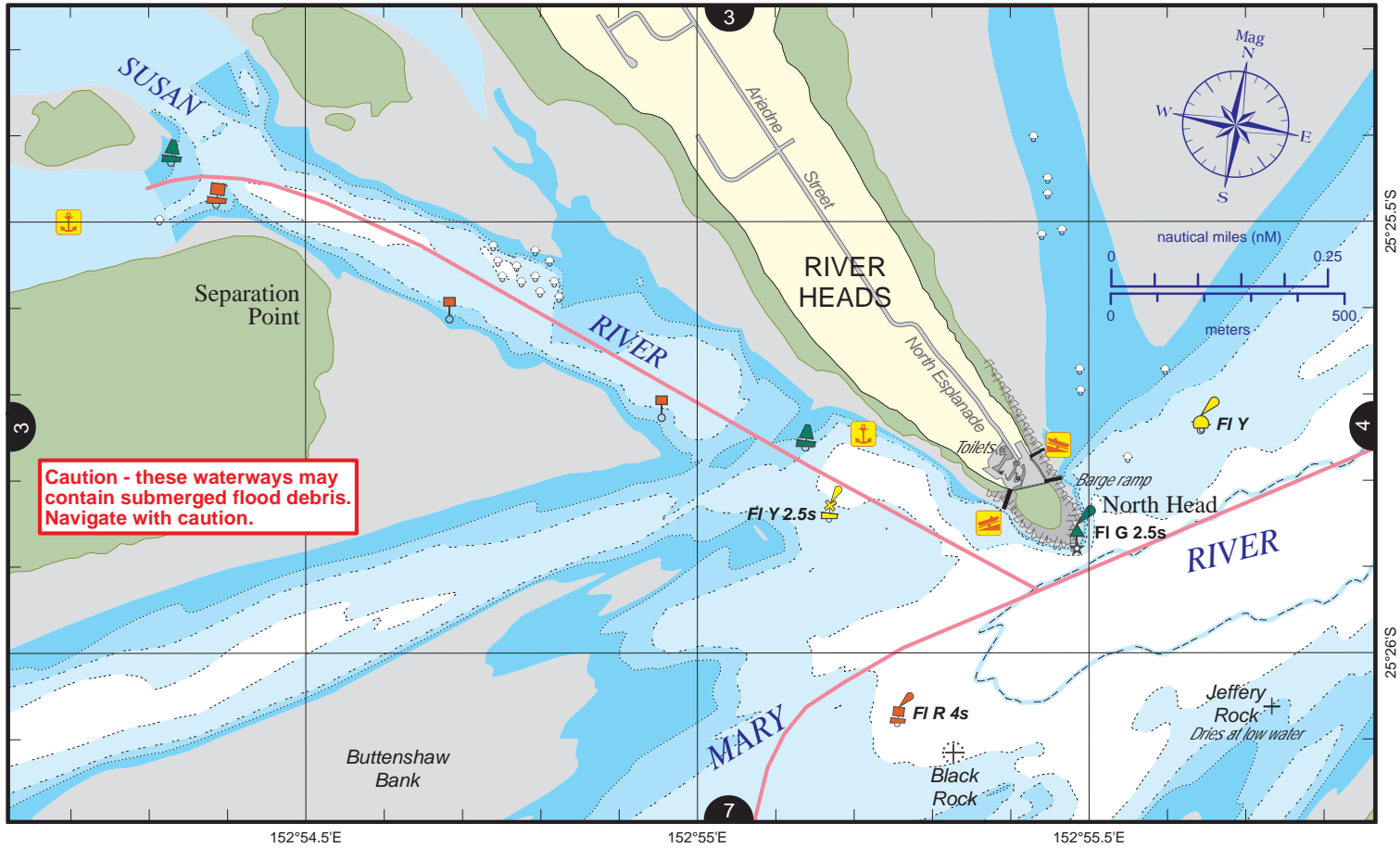
© Copyright The State of Queensland 2016

Queensland Department of Transport and Main Roads - Maritime Safety Queensland.

To reproduce any map within this series, see terms and conditions at Maritime Safety Queensland's website (www.msq.qld.gov.au)

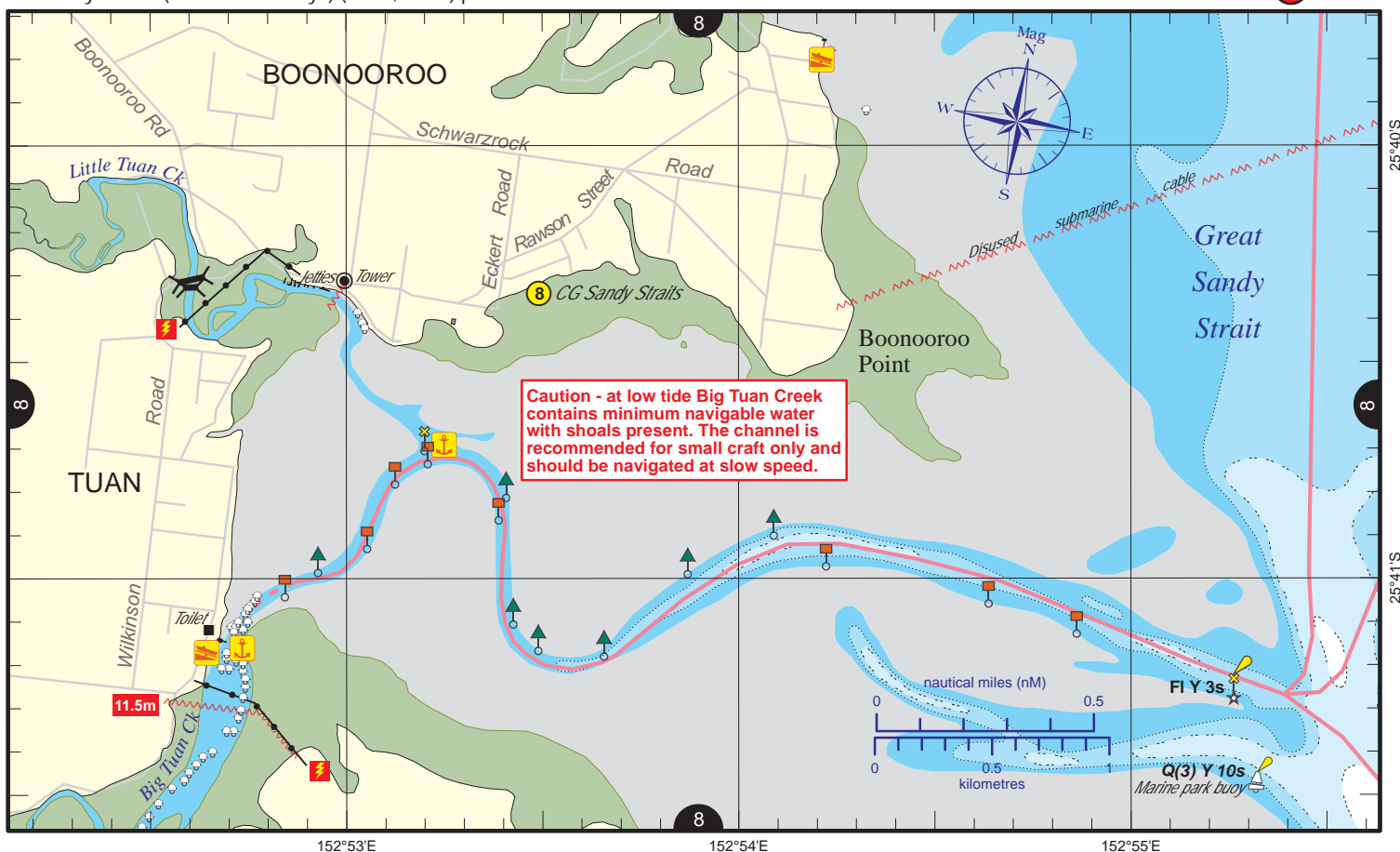
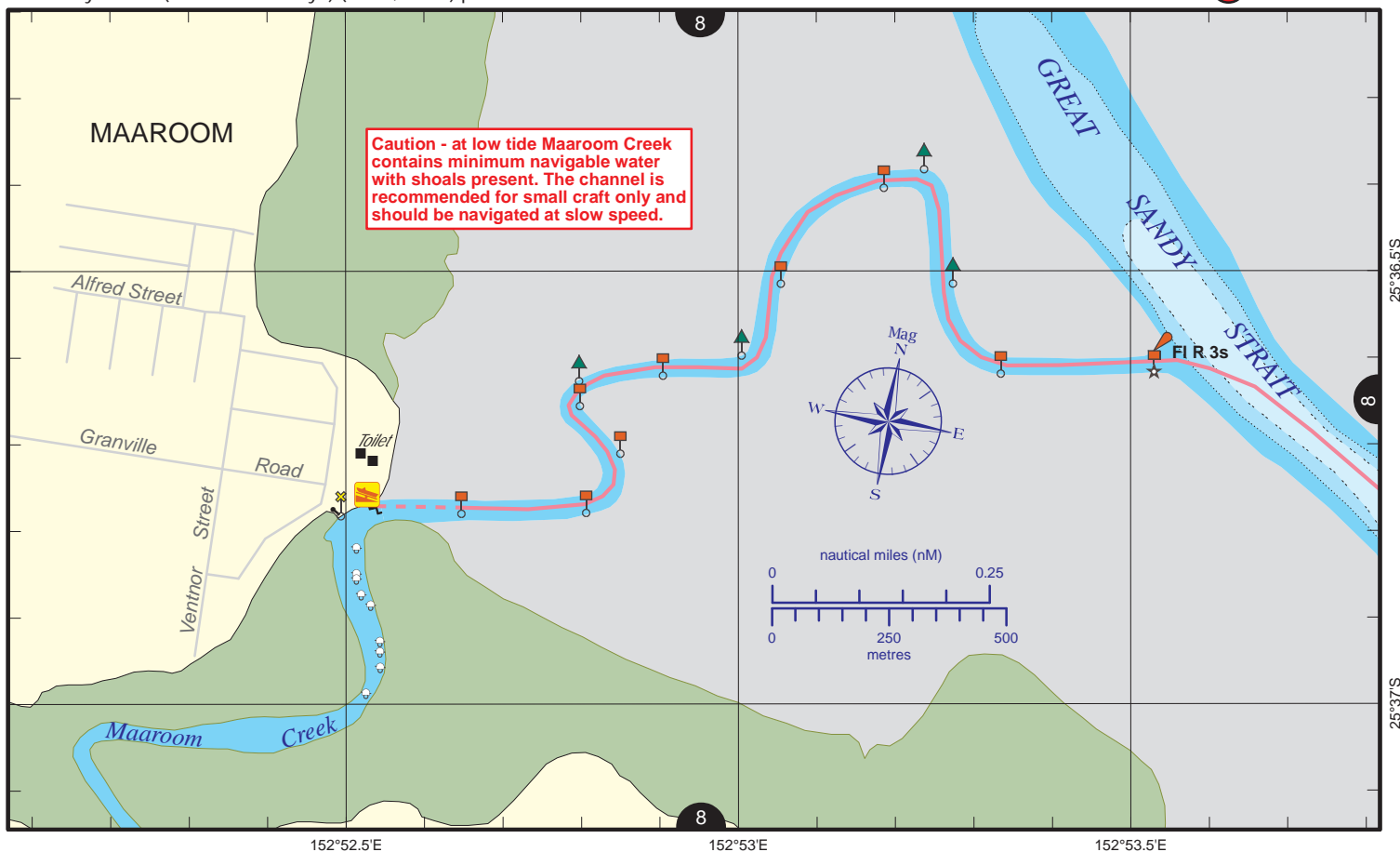
Nautical information current to 28 January 2016





Always keep a proper lookout when boating.
Look up and live for power and cable crossings that may not be shown on these maps due to scale or recent construction.
CAUTION: depth contours have not been re-surveyed in most areas since the 2011 and 2013 floods.
Exercise care when travelling outside suggested navigation tracks.

Nautical information current to 28 January 2016



Always keep a proper lookout when boating.

Look up and live for power and cable crossings that may not be shown on these maps due to scale or recent construction.

CAUTION: depth contours have not been re-surveyed in most areas since the 2011 and 2013 floods.

Exercise care when travelling outside suggested navigation tracks.

© Copyright The State of Queensland 2016

Queensland Department of Transport and Main Roads - Maritime Safety Queensland.

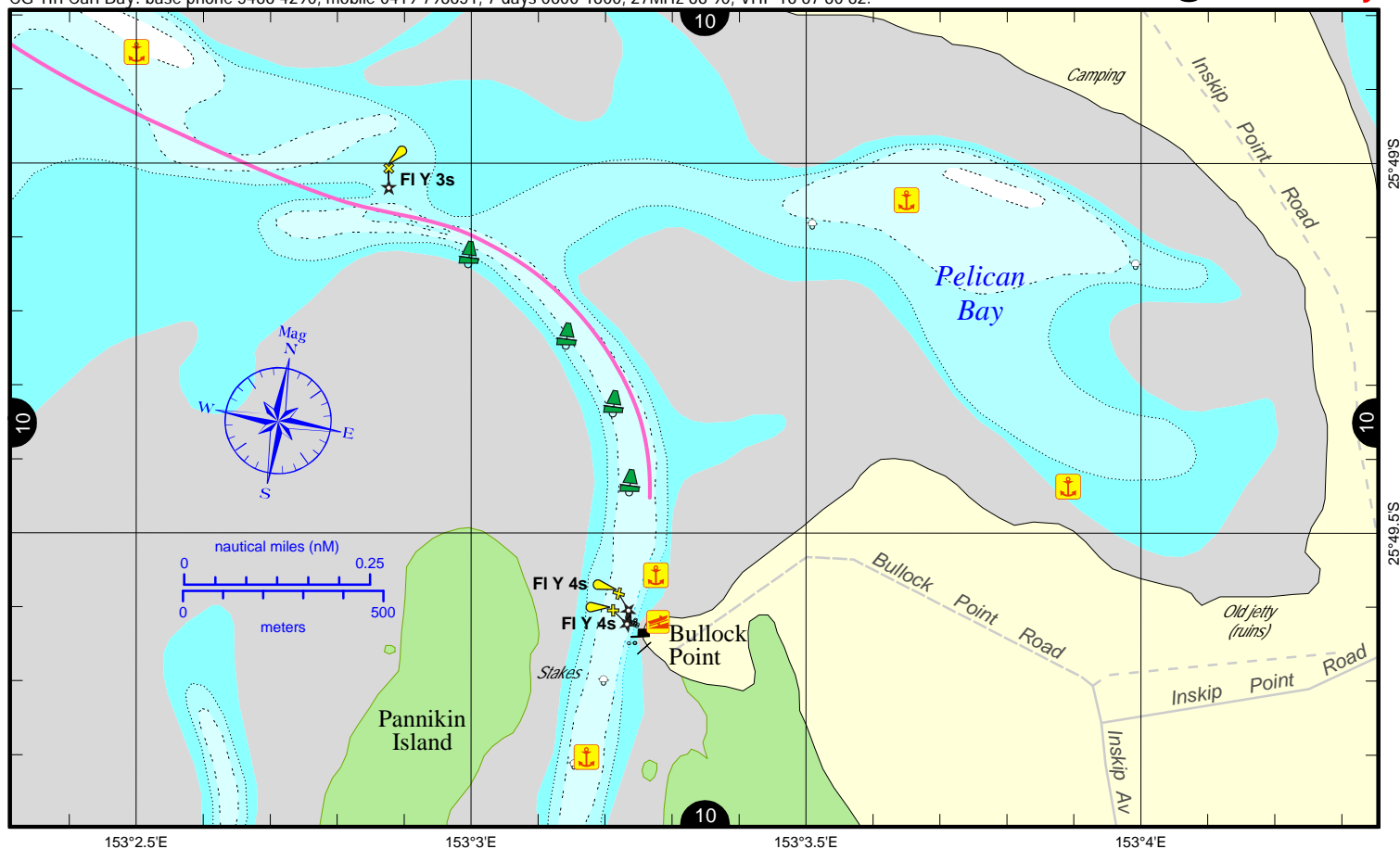
To reproduce any map within this series, see terms and conditions at Maritime Safety Queensland's website (www.msq.qld.gov.au)

Nautical information current to 28 January 2016



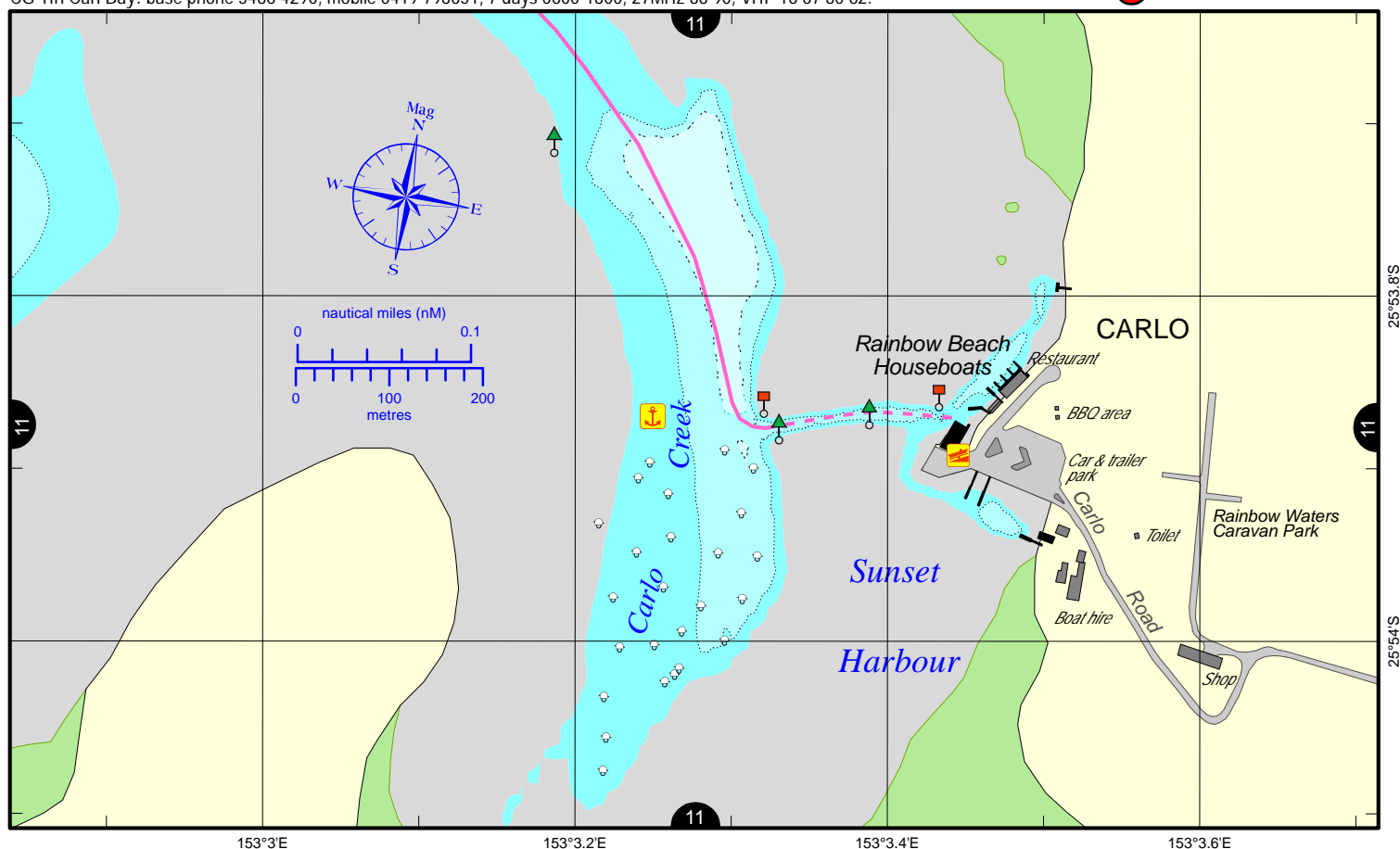
CG Tin Can Bay: base phone 5486 4290, mobile 0419 798651, 7 days 0600-1800, 27MHz 88 90, VHF 16 67 80 82.

F Pelican Bay



CG Tin Can Bay: base phone 5486 4290, mobile 0419 798651, 7 days 0600-1800, 27MHz 88 90, VHF 16 67 80 82.

G Sunset Harbour



Always keep a proper lookout when boating.

Look up and live for power and cable crossings that may not be shown on these maps due to scale or recent construction.

For depth contour date information, refer to the Key Sheet for this guide. Note that depths may change following floods.

Exercise care when travelling outside suggested navigation tracks.

© Copyright The State of Queensland 2021

Queensland Department of Transport and Main Roads - Maritime Safety Queensland.

To reproduce any map within this series, see terms and conditions at Maritime Safety Queensland's website (www.msq.qld.gov.au)

Nautical information current to 2 September 2021



**Queensland
Government**

