

Beacon to Beacon Guide

Discovery Coast

Round Hill Creek



Queensland
Government



Published by

Maritime Safety Queensland

© Copyright The State of Queensland
(Department of Transport and Main Roads)
2025



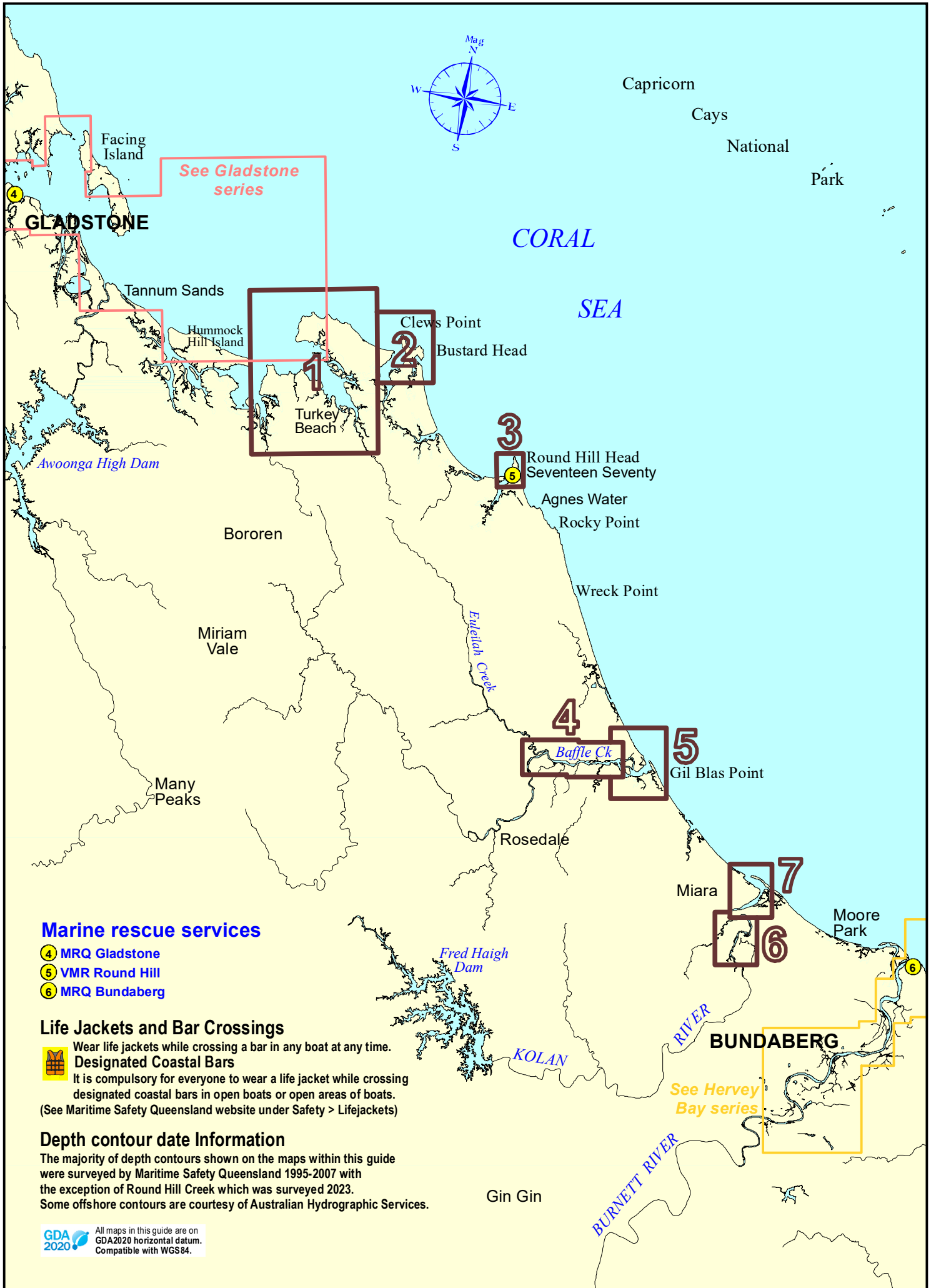
To view a copy of this licence, visit
<https://creativecommons.org/licenses/by/4.0/>

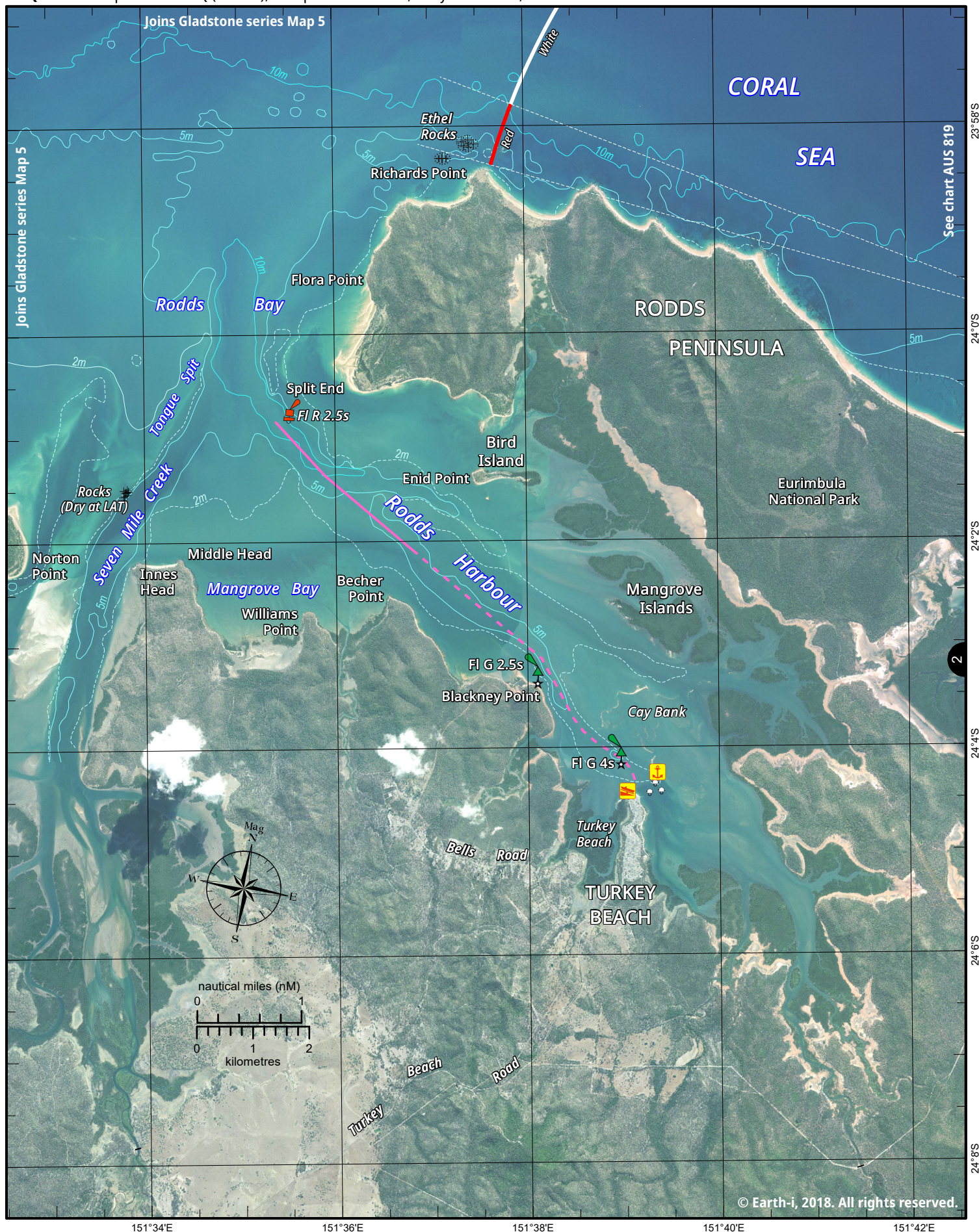
For commercial use terms and conditions

Please visit the Maritime Safety Queensland website at www.msq.qld.gov.au

'How to' use this guide

Use this Beacon to Beacon Guide with the 'How to' and legend booklet available from www.msq.qld.gov.au





Always keep a proper lookout when boating. Exercise care at all times.

Look up and live for power and cable crossings that may not be shown on these maps due to scale or recent construction.

CAUTION: Limited or no depth contour data is available for these waters. (Refer to the Key Sheet for this guide to determine date of survey information).

The latest satellite imagery (captured during 2018) is shown only as a guide. Sandbank visibility depends on the height of tide at time of image capture.

Exercise care when travelling outside suggested navigation tracks.

© Copyright The State of Queensland 2025

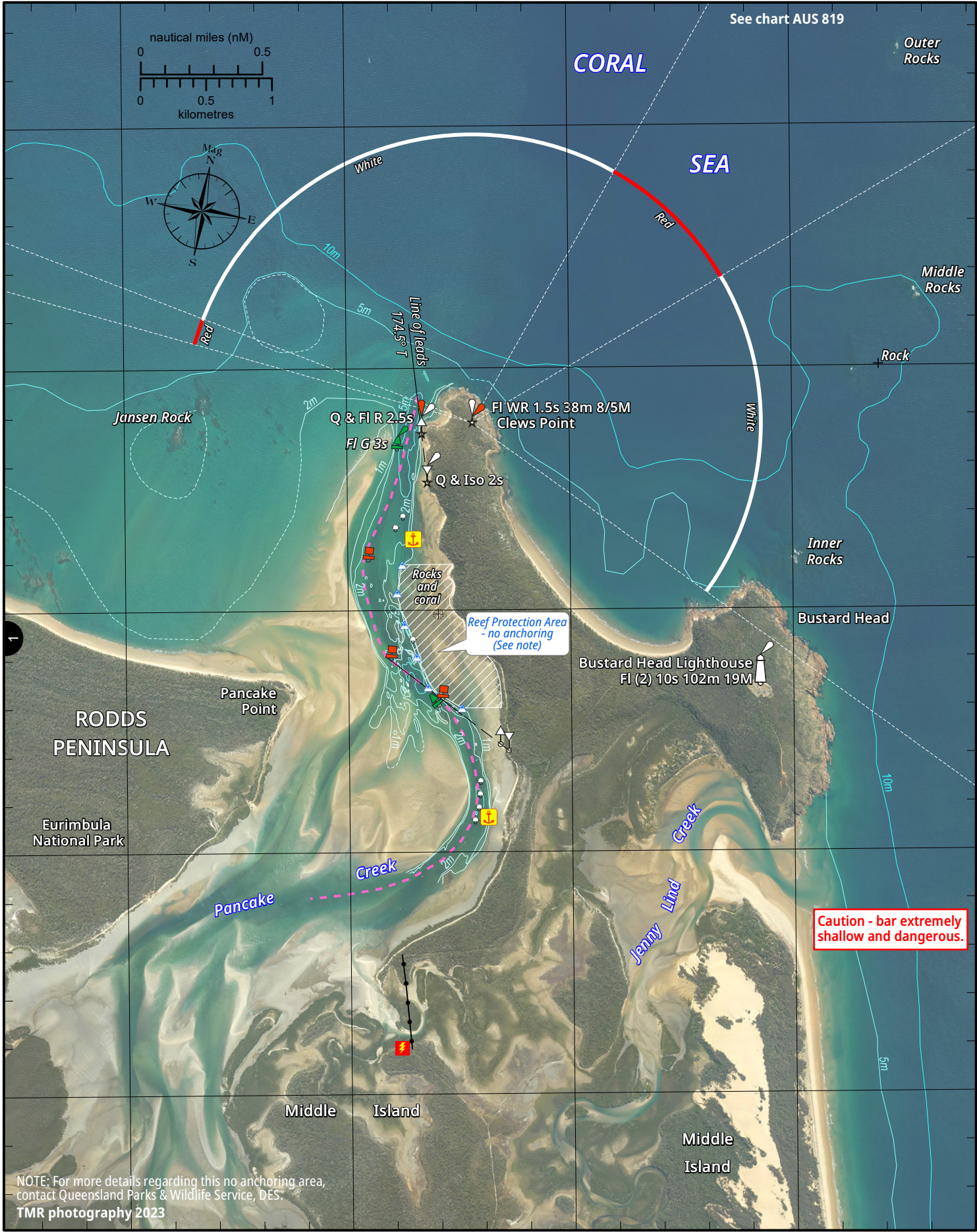
Queensland Department of Transport and Main Roads - Maritime Safety Queensland.

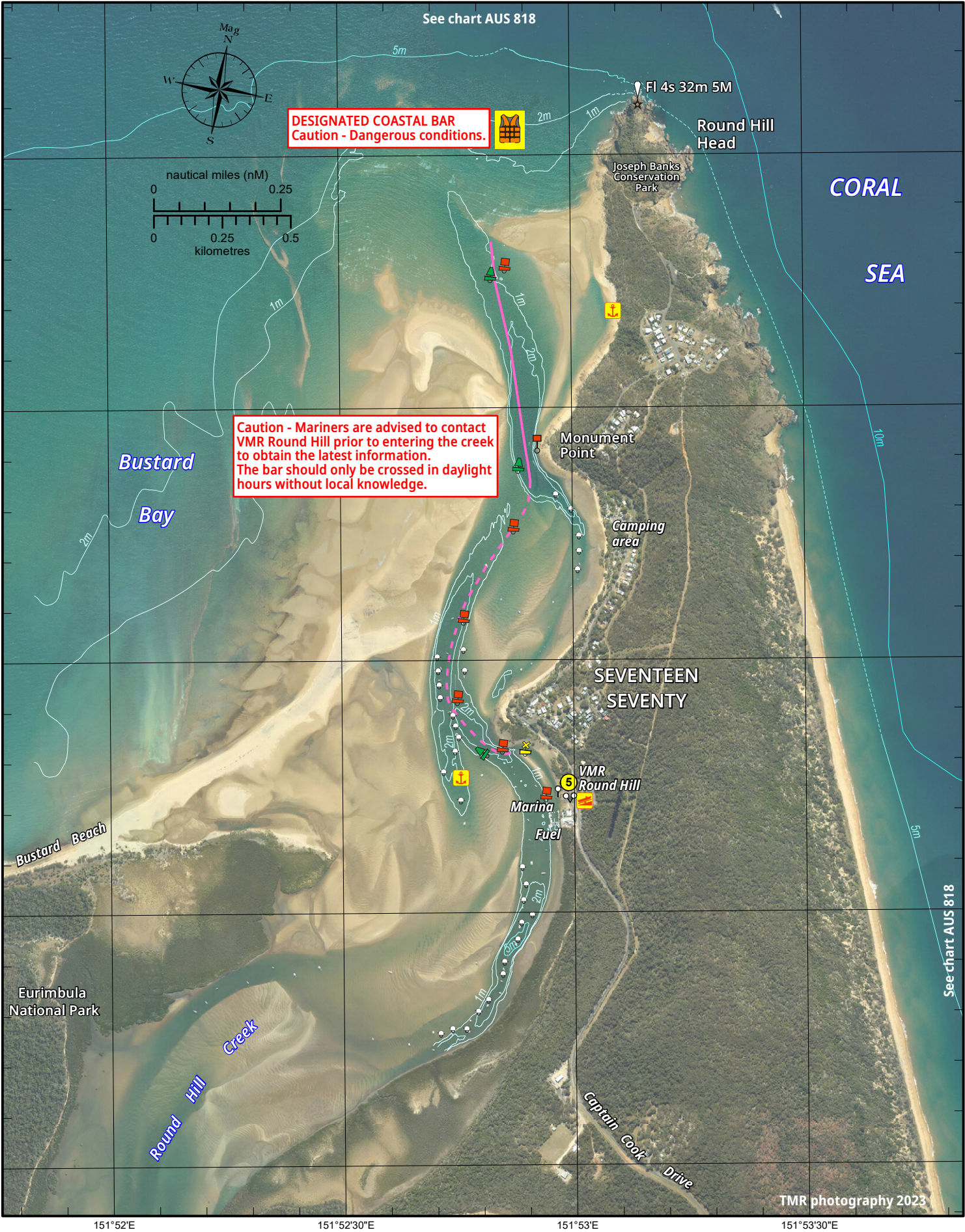
To reproduce any map within this series, see terms and conditions at Maritime Safety Queensland's website (www.msq.qld.gov.au)

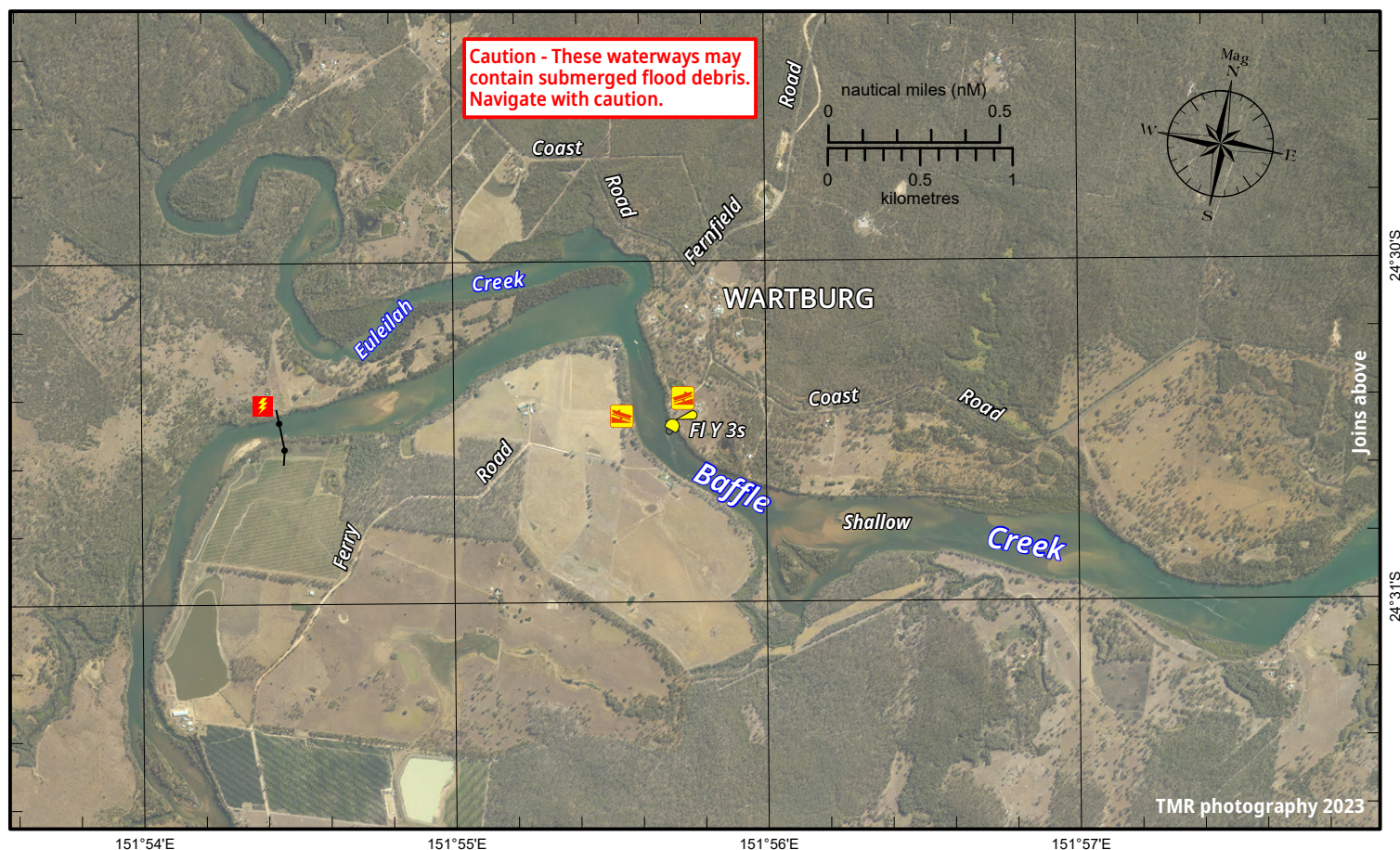
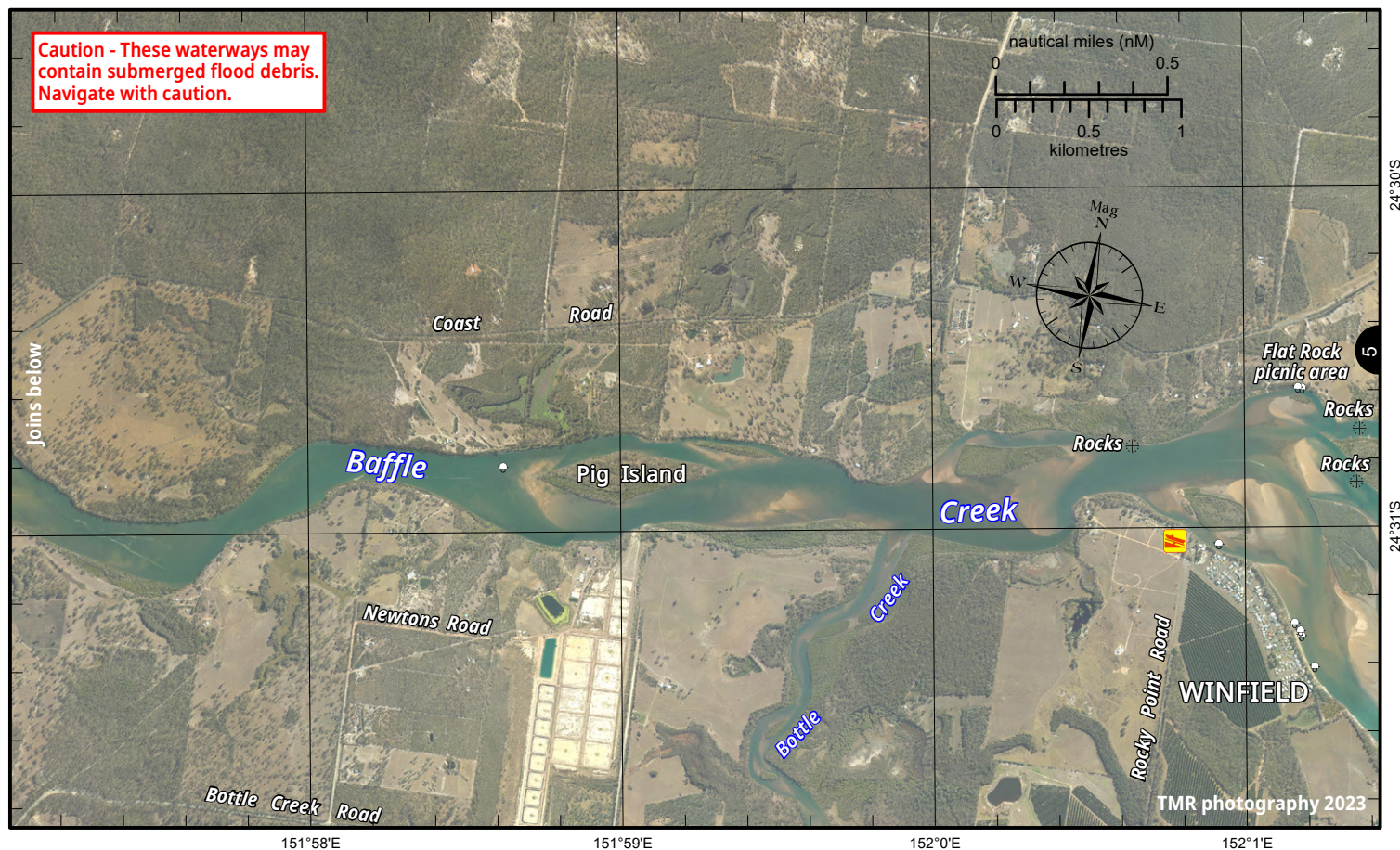
Nautical information current to 7 July 2025



Queensland
Government







Always keep a proper lookout when boating. Exercise care at all times.

Look up and live for power and cable crossings that may not be shown on these maps due to scale or recent construction.

CAUTION: Limited or no depth contour data is available for these waters. (Refer to the Key Sheet for this guide to determine date of survey information).

The latest air photo imagery (captured during 2023) is shown only as a guide. Sandbank visibility depends on the height of tide at time of image capture.

Exercise care when travelling outside suggested navigation tracks.

© Copyright The State of Queensland 2025

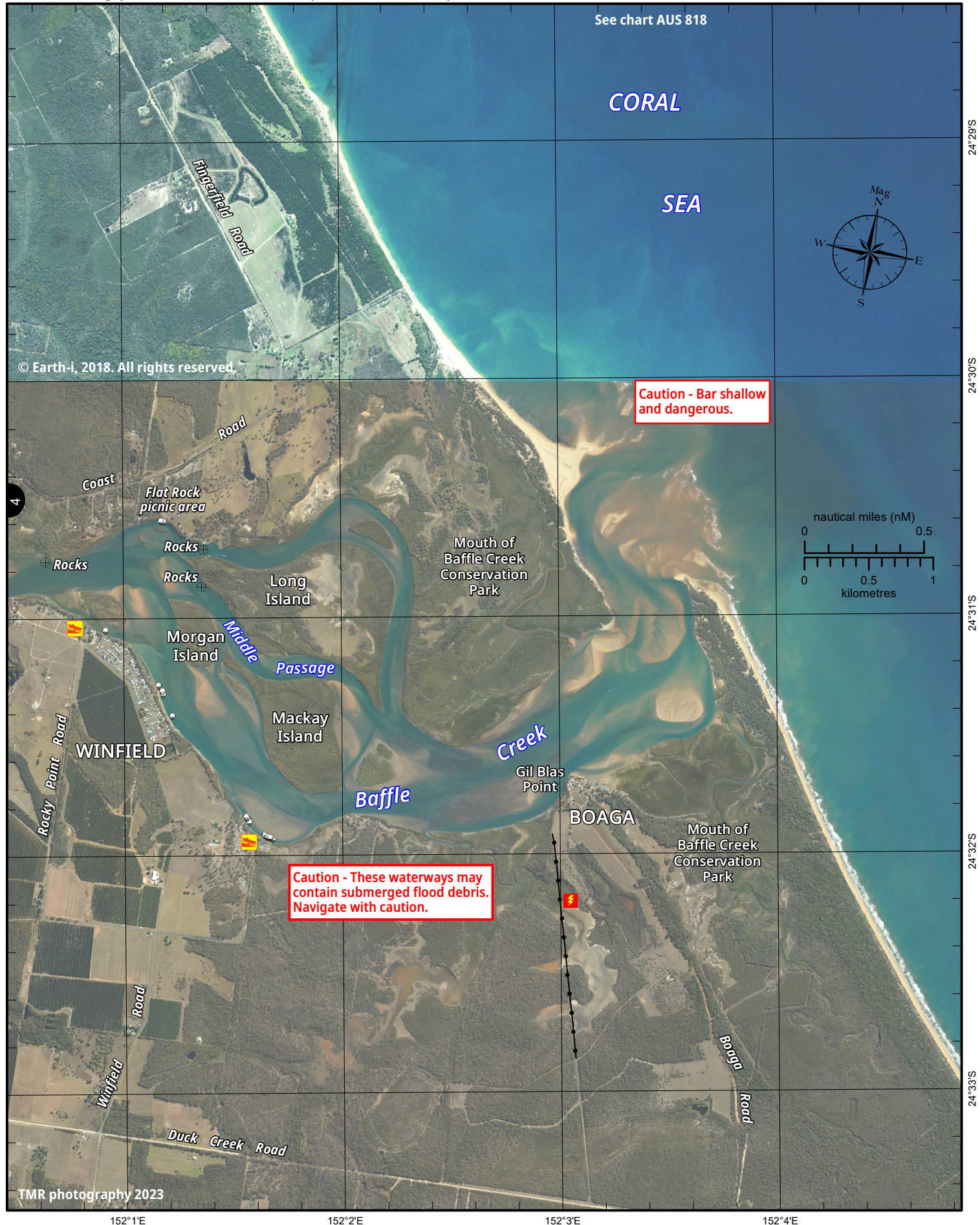
Queensland Department of Transport and Main Roads - Maritime Safety Queensland.

To reproduce any map within this series, see terms and conditions at Maritime Safety Queensland's website (www.msq.qld.gov.au)

Nautical information current to 7 July 2025



Queensland
Government



Always keep a proper lookout when boating. Exercise care at all times.

Look up and live for power and cable crossings that may not be shown on these maps due to scale or recent construction.

CAUTION: Limited or no depth contour data is available for these waters. (Refer to the Key Sheet for this guide to determine date of survey information).

The latest satellite imagery (captured during 2023) is shown only as a guide. Sandbank visibility depends on the height of tide at time of image capture.

Exercise care when travelling outside suggested navigation tracks.

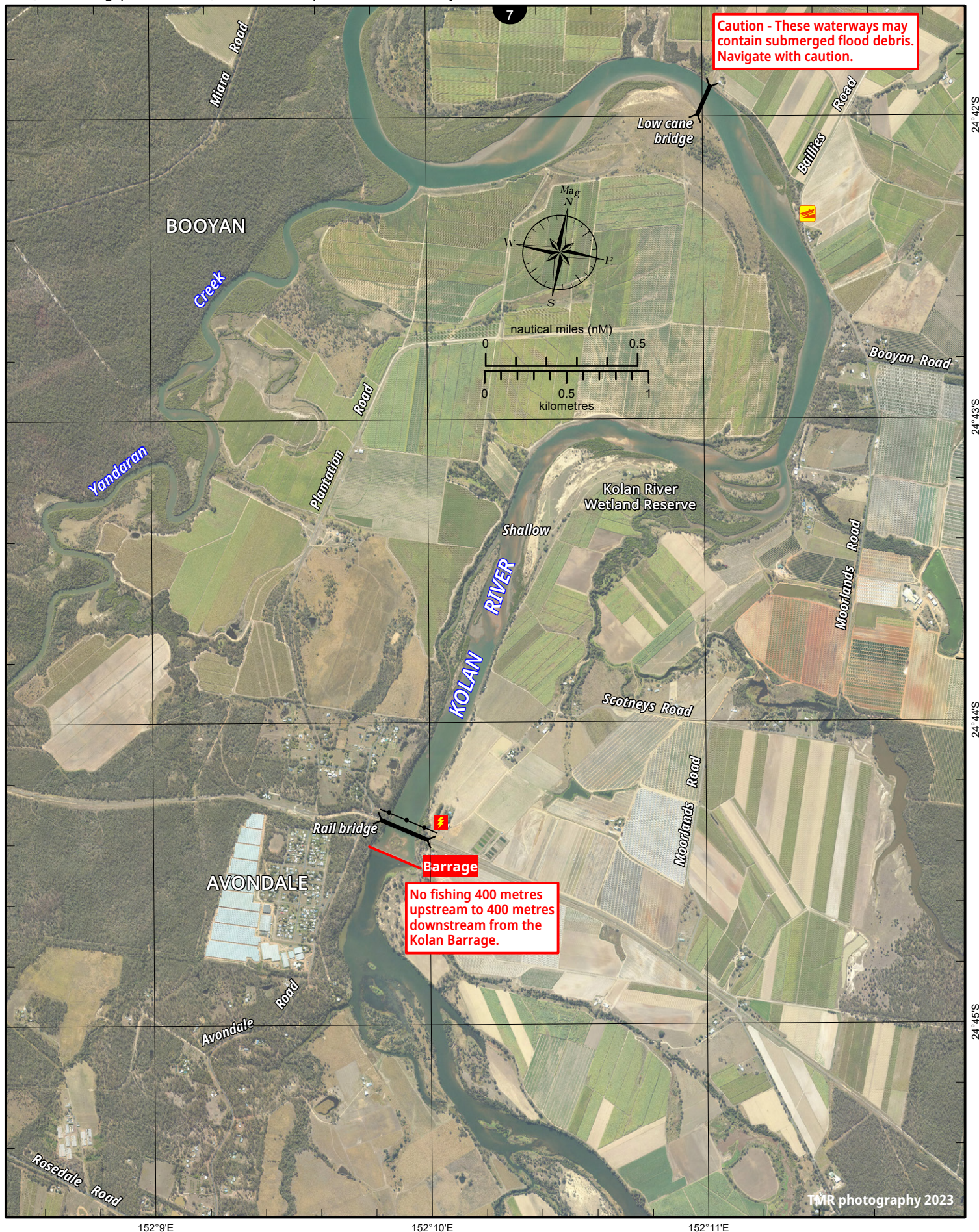
© Copyright The State of Queensland 2025

Queensland Department of Transport and Main Roads - Maritime Safety Queensland.

To reproduce any map within this series, see terms and conditions at Maritime Safety Queensland's website (www.msq.qld.gov.au)

Nautical information current to 7 July 2025





Always keep a proper lookout when boating. Exercise care at all times.

Look up and live for power and cable crossings that may not be shown on these maps due to scale or recent construction.

CAUTION: Limited or no depth contour data is available for these waters. (Refer to the Key Sheet for this guide to determine date of survey information).

The latest air photo imagery (captured during 2023) is shown only as a guide. Sandbank visibility depends on the height of tide at time of image capture.

Exercise care when travelling outside suggested navigation tracks.

© Copyright The State of Queensland 2025

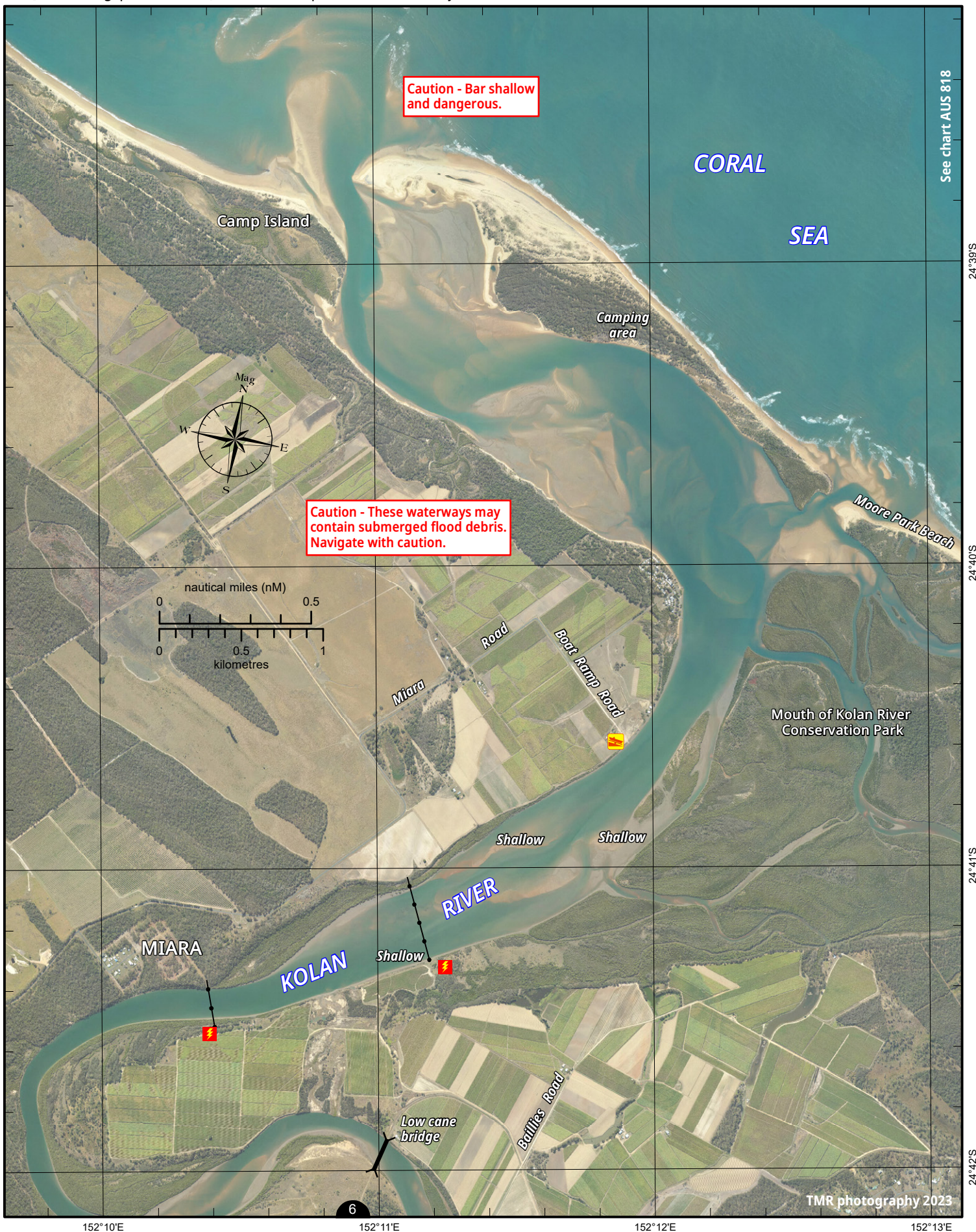
Queensland Department of Transport and Main Roads - Maritime Safety Queensland.

To reproduce any map within this series, see terms and conditions at Maritime Safety Queensland's website (www.msq.qld.gov.au)

Nautical information current to 7 July 2025



Queensland
Government



Always keep a proper lookout when boating. Exercise care at all times.

Look up and live for power and cable crossings that may not be shown on these maps due to scale or recent construction.

CAUTION: Limited or no depth contour data is available for these waters. (Refer to the Key Sheet for this guide to determine date of survey information).

The latest air photo imagery (captured during 2023) is shown only as a guide. Sandbank visibility depends on the height of tide at time of image capture.

Exercise care when travelling outside suggested navigation tracks.

© Copyright The State of Queensland 2025

Queensland Department of Transport and Main Roads - Maritime Safety Queensland.

To reproduce any map within this series, see terms and conditions at Maritime Safety Queensland's website (www.msq.qld.gov.au)

Nautical information current to 7 July 2025



Queensland
Government