

Explore Queensland

South East Queensland fishing trail



The South East Queensland fishing trail is a joint initiative of the Queensland Government and the Freshwater Fishing and Stocking Association of Queensland Inc.

South East Queensland stocking groups

- Caboolture Shire Fish Stocking Group Inc.
- Ewen Maddock Fish Management Inc.
- Hinze Dam Fish Management Committee
- Lake Borumba Fish Stocking Association Inc.
- Lake Macdonald Freshwater Fishing Association Inc.
- Lockyer Valley Fish Restocking Association Inc.
- Logan and Albert Fish Management Association Inc.
- Maroon-Moogerah Fish Management Association
- Pine Rivers Fish Management Association Inc.
- Somerset and Wivenhoe Fish Stocking Association
- Toowoomba and District Fish Stocking Association



Interpreter service

If you need an interpreter to help you understand this document call **13 25 23** or visit daf.qld.gov.au (search 'interpreter').

© State of Queensland, 2022

The Department of Agriculture and Fisheries proudly acknowledges all First Nations peoples (Aboriginal peoples and Torres Strait Islanders) and the Traditional Owners and Custodians of the country on which we live and work. We acknowledge their continuing connection to land, waters and culture and commit to ongoing reconciliation. We pay our respect to their Elders past, present and emerging.



The Queensland Government supports and encourages the dissemination and exchange of its information. The copyright in this publication is licensed under a Creative Commons Attribution 4.0 International (CC BY 4.0) licence.

Under this licence you are free, without having to seek our permission, to use this publication in accordance with the licence terms.

You must keep intact the copyright notice and attribute the State of Queensland as the source of the publication.

Note: Some content in this publication may have different licence terms as indicated.

For more information on this licence, visit <https://creativecommons.org/licenses/by/4.0/>.

The information contained herein is subject to change without notice. The Queensland Government shall not be liable for technical or other errors or omissions contained herein. The reader/user accepts all risks and responsibility for losses, damages, costs and other consequences resulting directly or indirectly from using this information.

Maps appearing in this publication appear courtesy of OpenStreetMap and licensed under Creative Commons 2: www.openstreetmap.org/copyright

© OpenStreetMap

Data is available under the Open Database License.

South East Queensland fishing trail

Queensland's stocked dams and weirs offer fantastic recreational freshwater fishing experiences – and our regional fishing trails are a great way to *explore Queensland*.

With more than 60 dams and weirs across 5 regions – **North Queensland, Central Queensland, Wide Bay-Burnett, South East Queensland and the Murray–Darling** – there are plenty of places to wet a line and catch a great feed!

The **Stocked Impoundment Permit Scheme (SIPS)** provides a sustainable fishing option, with over 2 million fish stocked in Queensland dams and weirs every year. The money you pay for your SIPS permit is used by community stocking groups to maintain fish stocks so you can enjoy your fishing – now and in the future.

Before you head off ...

- **Download the Qld Fishing 2.0 app** so you have Queensland's recreational fishing rules at your fingertips.
- **Buy your SIPS permit** via the **Qld Fishing 2.0 app** or at fisheries.qld.gov.au, or call **1300 575 359** (or at Queensland and selected New South Wales Australia Post outlets).
- **Check with the relevant local authorities** (e.g. local council, Seqwater, Sunwater) that the dam or weir is open and safe to use.
- Make sure your vehicle is suitable to drive on **unsealed roads** (e.g. gravel and dirt) if required, check if you need **4WD capability** and make sure your **registrations** are up to date.
- Check the **weather conditions** and make sure you have all necessary safety gear.
- **Download** the Freshwater Fishing and Stocking Association of Queensland's **Fish Monitoring App** to keep track of your catches

More information: visit fisheries.qld.gov.au or call **13 25 23**

* All people over 18 years must have a permit to fish in stocked dams and weirs that are listed in this guide at time of printing.

Gone fishing...

in South East Queensland

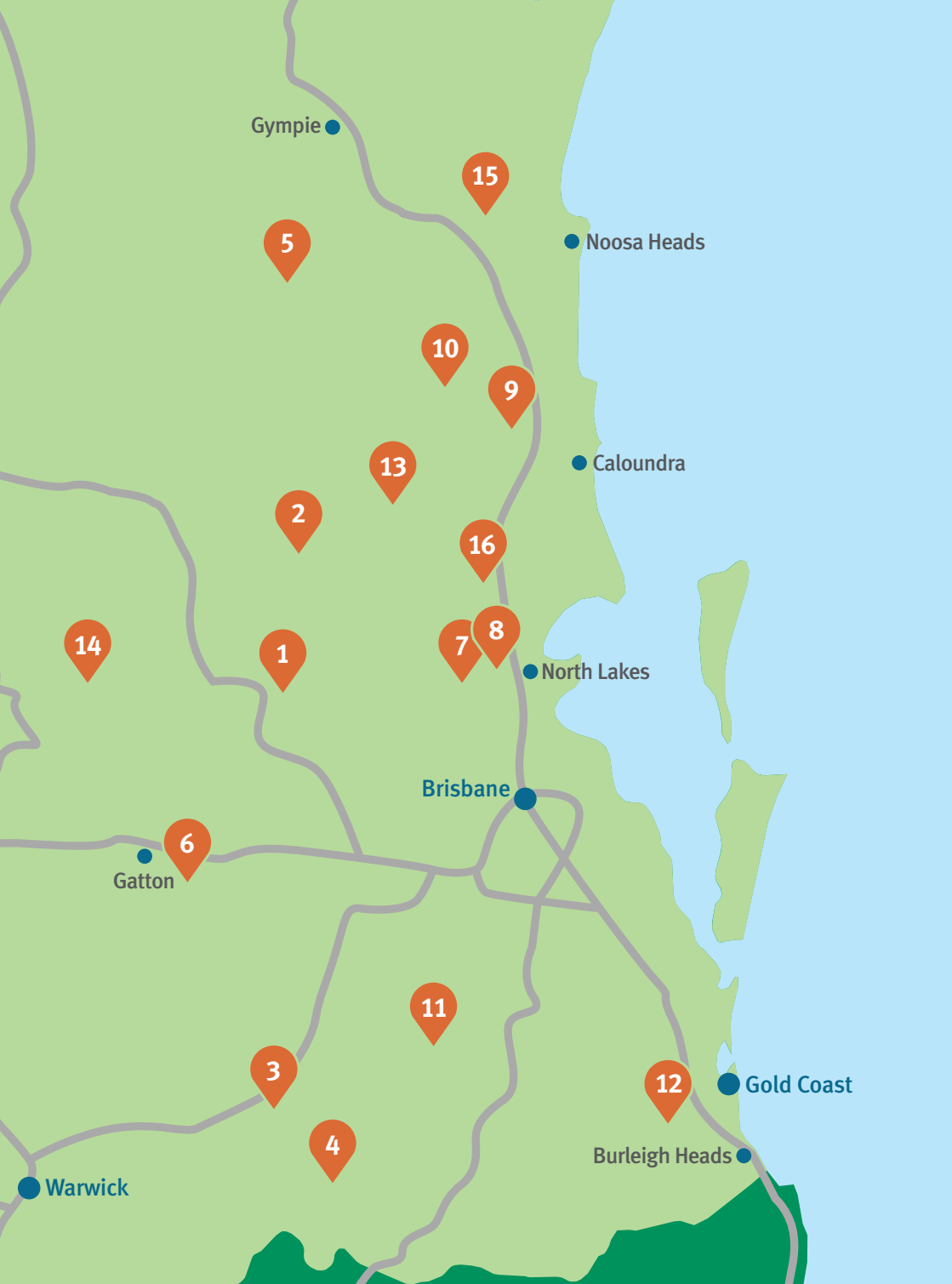
Bass is king for anglers in South East Queensland waterways, but with a number of successful stocking efforts under way, the mighty Mary River cod is making a comeback.



Most dams in this region can be fished as day trips from Brisbane, the Gold Coast or the Sunshine Coast.

1. Wivenhoe Dam (Lake Wivenhoe)
2. Somerset Dam
3. Lake Moogerah
4. Maroon Dam (Lake Maroon)
5. Borumba Dam (Lake Borumba)
6. Lake Dyer (Bill Gunn Dam)
7. North Pine Dam (Lake Samsonvale)
8. Lake Kurwongbah
9. Ewen Maddock Dam
10. Baroon Pocket Dam (Lake Baroon)
11. Wyaralong Dam
12. Hinze Dam (Lake Advancetown)
13. Woodford Weir
14. Cressbrook Dam
15. Lake Macdonald
16. Caboolture River Weir





Gympie

Noosa Heads

Caloundra

North Lakes

Brisbane

Gatton

Warwick

Gold Coast

Burleigh Heads

Stocked fish

Australian bass

Like a challenge? Bass is known for its fighting nature.

Australian bass is an excellent freshwater sport fish and has become a very popular target for anglers. They can be readily caught with lures (prefer floating lures) and bait or by trolling. They are aggressive feeders and you will definitely know if you've got a bass as you can feel consecutive taps on the end of the line.



Golden perch

Spring is the best season for catching golden perch as they start becoming more active, and evening is the best time to get a bite.

Although not as big as some other fish, they are a great sport fish and fun for any fisher to catch. Best to fish with a small lure as it mimics their diet of small insects, yabbies, fish and prawns (small soft plastics around 50–80 mm).



Silver perch

As with golden perch, small lures and bait are the best for catching silver perch due to their small mouths.

Shrimps are the best bait as they are their primary food source.



Mary River cod

Mary River cod provide a serious angling challenge in stocked waters.

One of the few remaining east coast freshwater cod species, it was considered one of the most endangered freshwater fish in Queensland. While yet to return to its former numbers, the efforts of community and angling groups mean this fish is in with a fighting chance.



NOTE: Mary River cod protection

Note: Mary River cod are protected within the Mary River catchment and all South East Queensland river systems (apart from designated impoundments) and must be released if accidentally taken.

Southern saratoga

Saratoga are strong and aggressive. August to October is a good time for Saratoga fishing – try somewhere a little more secluded early in the morning.

As they are surface feeders, try top water methods. Lures such as stickbaits or poppers work well, as does bait that mimics frogs or lizards. During the heat of the day they will venture deeper into the water and hide among the vegetation of overhanging trees. They have a lot of teeth and a very bony mouth, so may be difficult to catch just with a simple hook.



NOTE: Redclaw crayfish

Outside of their natural range in the Gulf of Carpentaria and Cape York Peninsula south to the Normanby River, Redclaw Crayfish are considered a non-Indigenous species and must not be used as bait or returned to the water.

Pest fish

If you catch a pest fish, do not release it back into the water – you must dispose of it appropriately.

If caught, tilapia must be humanely destroyed immediately and disposed of as soon as practicable by burying a suitable distance from the waterway where it was caught or placing it in a rubbish bin.

If you spot a pest fish outside their known distribution, please take a photo and call **Biosecurity** on **13 25 23**.

The most common types of pest fish are **carp**, **tilapia** and **gambusia** (mosquito fish).

Common carp



Gambusia (mosquito fish)



Mozambique tilapia



Spotted tilapia



Stocked dams and weirs

Facilities guide



Accommodation
within 5 km



Picnic tables



Boat hire



Camping
within 5 km



Playground/
kids activities



Boat ramp



Campfires



Toilets



Water sports



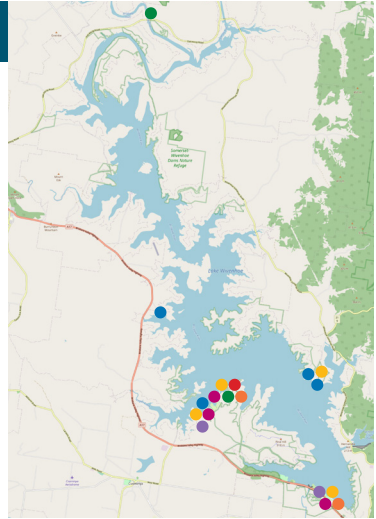
BBQs



Stocked dams and weirs

Wivenhoe Dam (Lake Wivenhoe)

- Located 30 km north of Ipswich and 80 km west of Brisbane
- Stocked with Australian bass, golden perch, silver perch, Mary River cod and saratoga.
- Home of big bass in Queensland
- Designated areas to snorkel and scuba dive
- Sailing, canoeing, kayaking and rowing permitted
- Speed limit of 6 knots low-emission direct-injection 2-stroke outboards (max. 60 hp) allowed

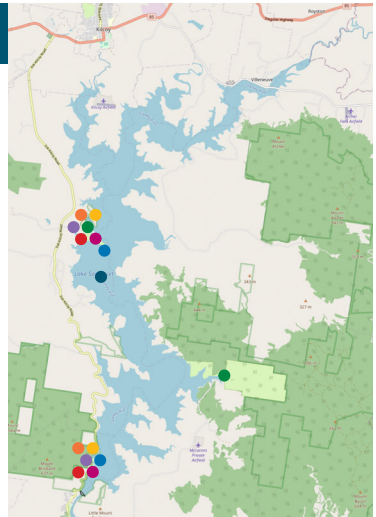


Facilities



Somerset Dam

- Located 70 km north of Ipswich near the town of Somerset
- Stocked with Australian bass, golden perch, silver perch, Mary River cod and saratoga
- Well known for large Australian bass
- Popular for fishing and water sports
- Boat and kayak hire



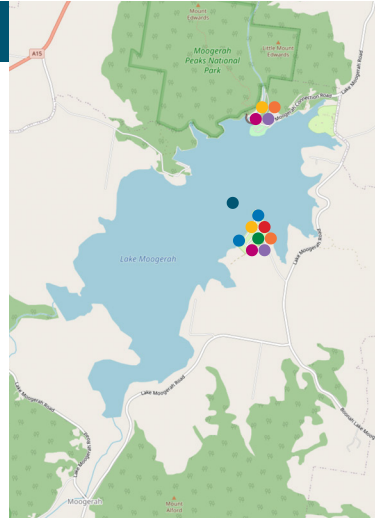
Facilities



Stocked dams and weirs

Lake Moogerah

- Located on the Scenic Rim near Boonah, 103 km south-west of Brisbane
- Stocked with Australian bass, golden perch, silver perch and Mary River cod
- Popular for fishing and water sports
- Standing trees on one side to target fish and a gorge on the opposite side
- Boat and kayak hire at surrounding caravan parks

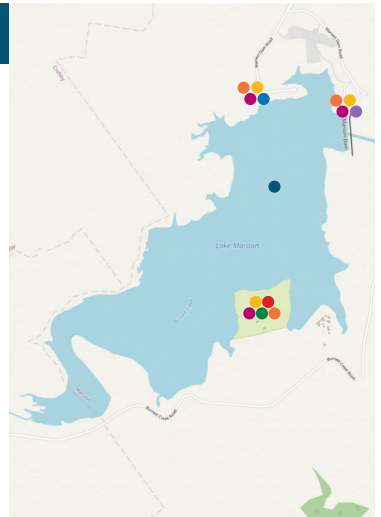


Facilities



Maroon Dam (Lake Maroon)

- Located on the Scenic Rim near Boonah, 116 km south-west of Brisbane and 20 km west of Rathdowney
- Stocked with Australian bass, golden perch, silver perch and Mary River cod
- Popular for fishing and water sports
- Fishing permitted on the shore of Slater Park and Maroon Dam day-use area and from vessels
- Popular for first-time fly fishers



Facilities

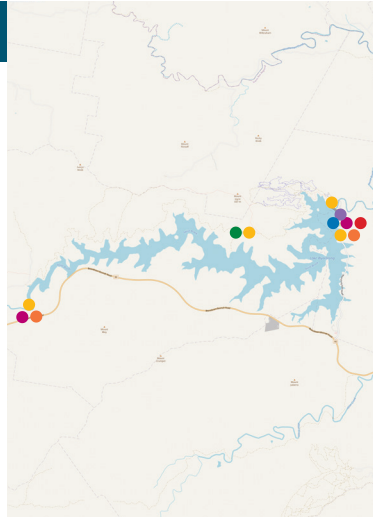


Stocked dams and weirs

Wyaralong Dam

- Located 21 km north-west of Beaudesert at the base of Mt Joyce in Wyaralong
- Stocked with Australian bass and Mary River cod
- Only electric-powered vessels and paddle craft allowed
- Horseriding trails around the dam
- Wheelchair-accessible toilets
- Controlled entry via boom gates open 6am – 6pm (seasonal)
- No camping at the eastern trailhead

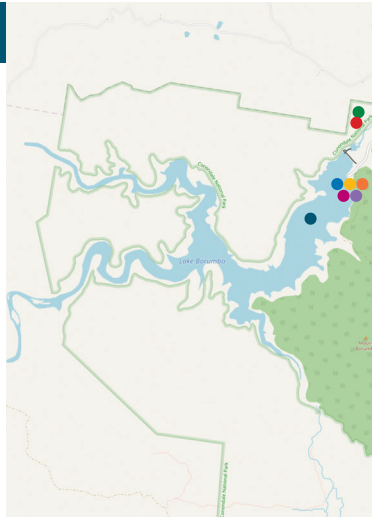
Facilities



Borumba Dam (Lake Borumba)

- Located in the Sunshine Coast Hinterland, approx. 48 km southwest of Gympie
- Stocked with Australian bass, golden perch, silver perch, saratoga and Mary River cod
- Saratoga most popular target for lure and fly fishers, mostly in spring and summer
- Bass a popular target in winter
- Popular for fishing and water sports
- Hiking, bushwalking and mountain biking in surrounding Imbil State Forest

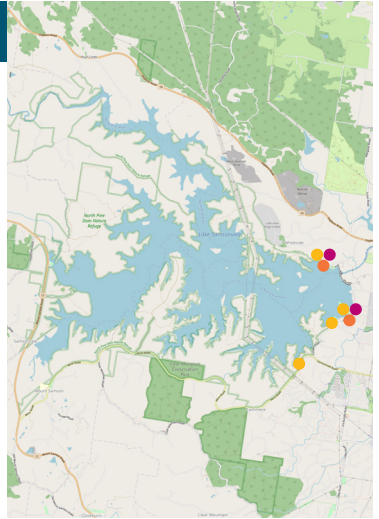
Facilities



Stocked dams and weirs

North Pine Dam (Lake Samsonvale)

- Located 28 km north of Brisbane near Petrie
- Stocked with Australian bass, golden perch, silver perch, Mary River cod and Southern saratoga
- Fishing from shore permitted at Bullocky Rest (Forgan Road, Joyner), McGavin View (Vores Road, Whiteside), Forgan Park (Forgan Road, Joyner), Forgan Cove (Forgan Road, Joyner) and Kobble Creek (Mt Samson Road, Kobble Creek) recreation areas
- Fishing from a vessel requires a boating access permit from the Pine Rivers Fish Management Association Inc.
- Access to lake and recreational areas:
September–April.....5.30am – 6.30pm
May–August.....6.00am – 5.30pm
- No camping at the dam

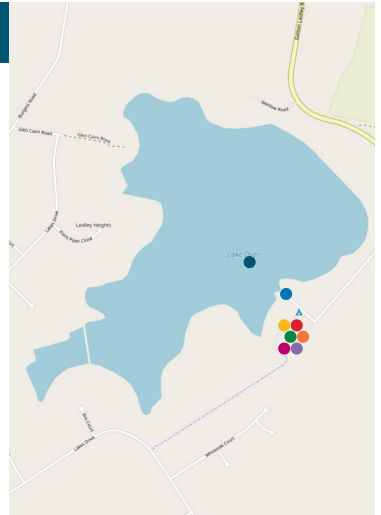


Facilities



Lake Dyer (Bill Gunn Dam)

- Located 2 km west of Laidley near Ipswich
- Stocked with Australian bass, golden perch and silver perch
- Popular for fishing and water sports
- Swimming permitted in designated areas



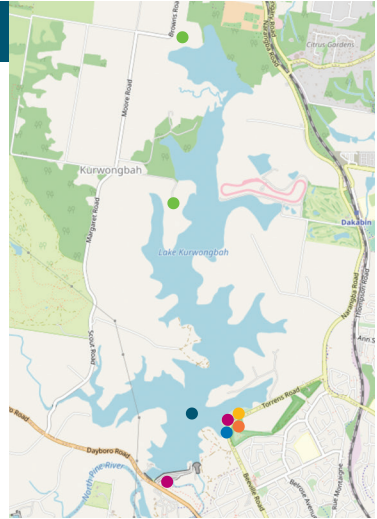
Facilities



Stocked dams and weirs

Lake Kurwongbah

- Located 32 km north of Brisbane near Petrie
- Stocked with Australian bass, golden perch, silver perch and Mary River cod
- Boating and water skiing only permitted by members and guests of the Lake Kurwongbah Water Ski Zone and Waterski Queensland
- Fishing permitted from paddlecraft and shore
- Kurwongbah Park (Daboro road, Petrie) and Mick Hanfling Park (Torrens road, Petrie) best spots for shore fishing
- Popular for kayak fishing

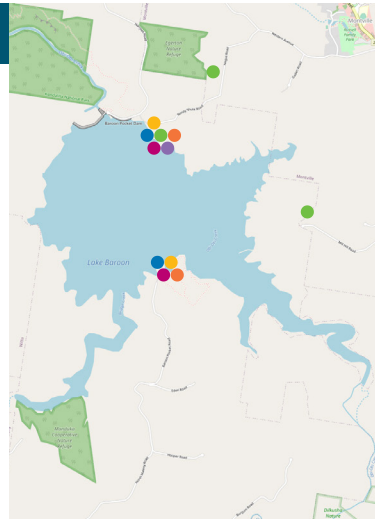


Facilities



Baroon Pocket Dam (Lake Baroon)

- Located in Montville in the Sunshine Coast Hinterland
- Stocked with Australian bass and Mary River cod
- Mary River cod cannot be taken from the dam as they are protected



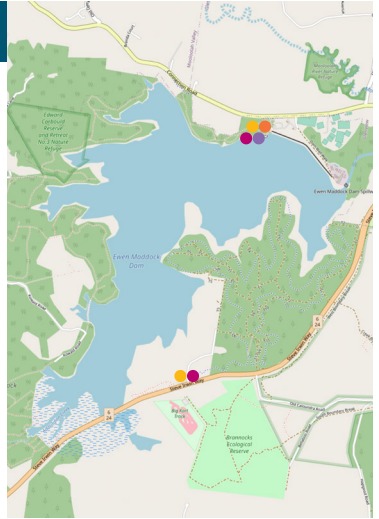
Facilities



Stocked dams and weirs

Ewen Maddock Dam

- Located 5 km north of Landsborough and 23 km west of Caloundra on the Sunshine Coast
- Stocked with Australian bass, golden perch, silver perch and Mary River cod
- Australian bass main target
- Only paddle craft allowed, so a quiet and tranquil spot to fish
- Fish permitted from the platform on the Maddock Park boardwalk and non-motorised vessels



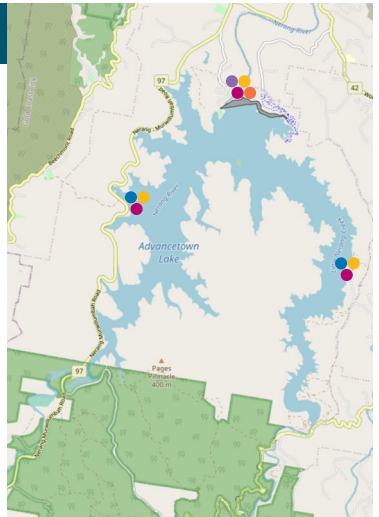
Facilities



Hinze Dam (Lake Advancetown)

NOTE: Fish from Hinze Dam cannot be eaten due to high mercury levels

- Located on the Gold Coast, 5 km west of Nerang in Advancetown
- Stocked with Australian bass, golden perch, silver perch, Mary River cod and Southern saratoga
- Only electric-powered vessels, sail craft and paddle craft allowed
- One of the best bass fishing locations in Australia – catches up to 40 cm and some over 50 cm!
- Fish among the trees or try your luck casting lures and flies or trolling along the dam edges among the weed grass and waterlilies



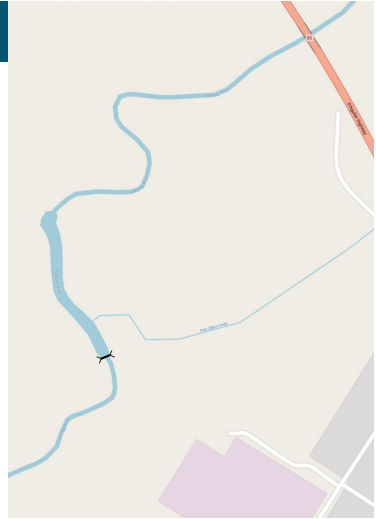
Facilities



Stocked dams and weirs

Woodford Weir

- Located on the Stanley River, 2 km west of Woodford and 28 km north-west of Caboolture
- Stocked with Australian bass, golden perch, silver perch and Mary River cod
- Only suitable for kayaks, canoes and small vessels
- Take precautions when fishing – plenty of sunken timber and undercut banks
- Accommodation available in Woodford

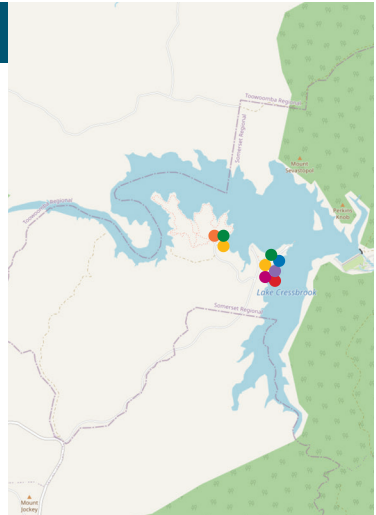


Facilities



Cressbrook Dam

- Located 33 km north-east of Toowoomba and 67 km south of Crows Nest
- Stocked with Australian bass, golden perch, silver perch, Mary River cod and Southern saratoga
- Fish attracting structures installed
- Maximum speed limit of 8 knots offshore and 4 knots nearshore
- Water-based activities only permitted during day-use area hours:
September–April.....6.00am – 8.00pm
May–August.....7.00am – 6.00pm
- Camp sites can't be booked
- Swimming not permitted



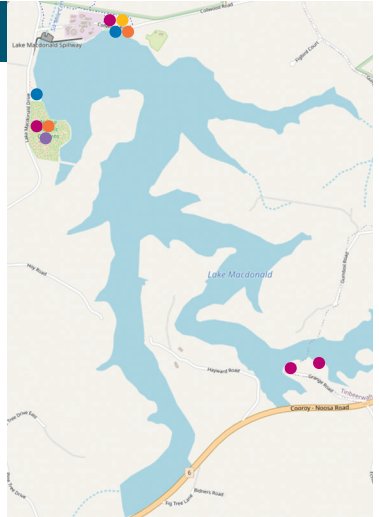
Facilities



Stocked dams and weirs

Lake Macdonald

- Located 4 km north-east of Cooroy and 22 km west of Noosa Heads on the Sunshine Coast
- Stocked with Australian bass, golden perch, silver perch and Mary River cod
- Three launch points – Lake Macdonald Park (Lake Macdonald Drive), Mary River Cod Park (Collwood Road) and Jabiru Park (Grange Road – paddle craft only)
- Only electric-powered vessels, sail craft and paddle craft allowed

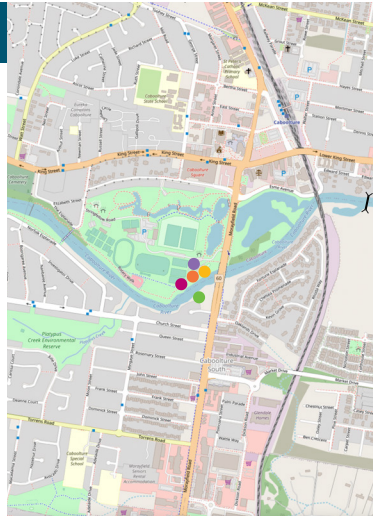


Facilities



Caboolture River Weir

- Located in Caboolture, approx. 51 km north of Brisbane
- Stocked with Australian bass and Mary River cod
- Suitable for paddle craft and small vessels only
- Facilities located at Apex Park



Facilities



