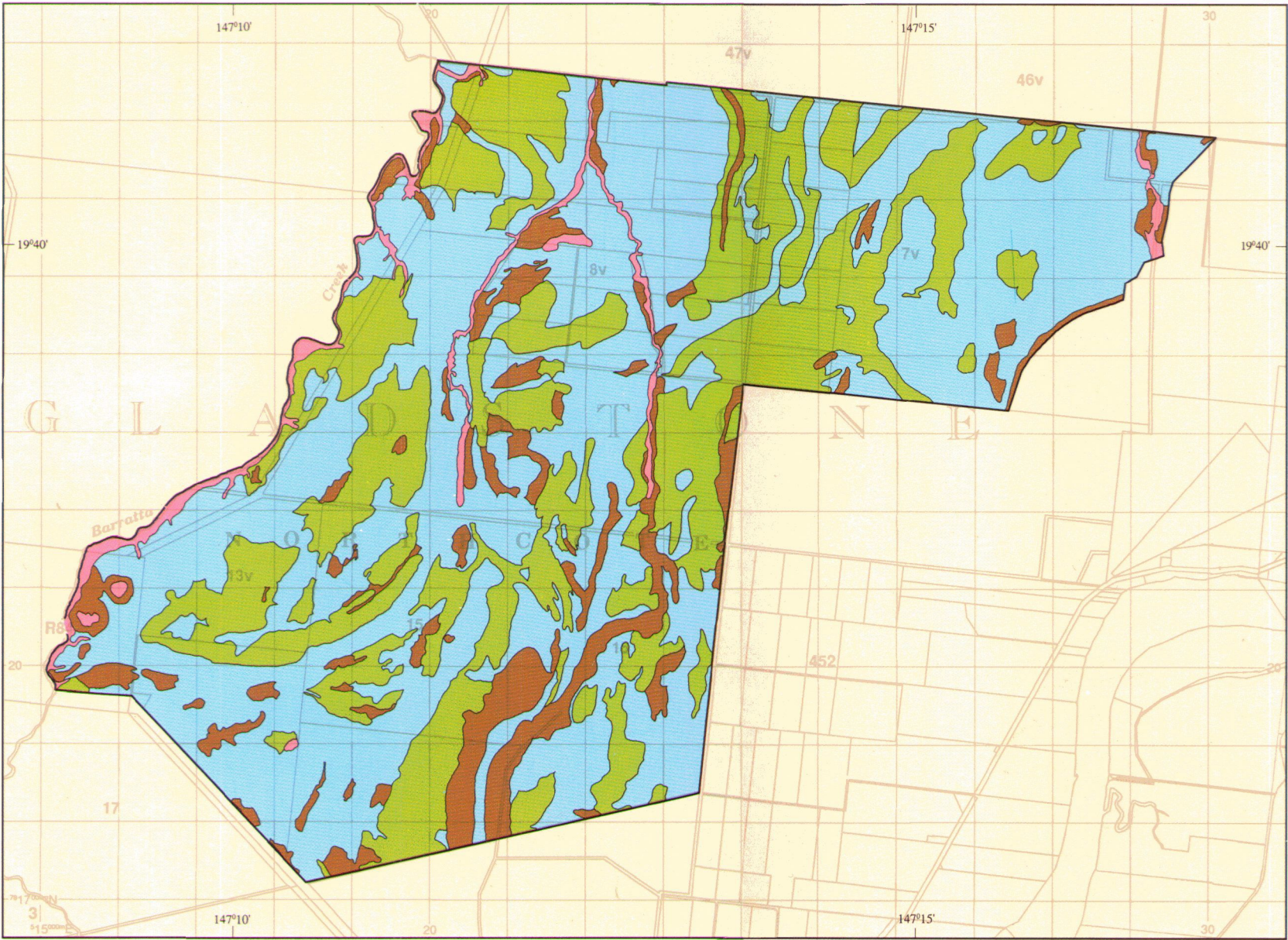
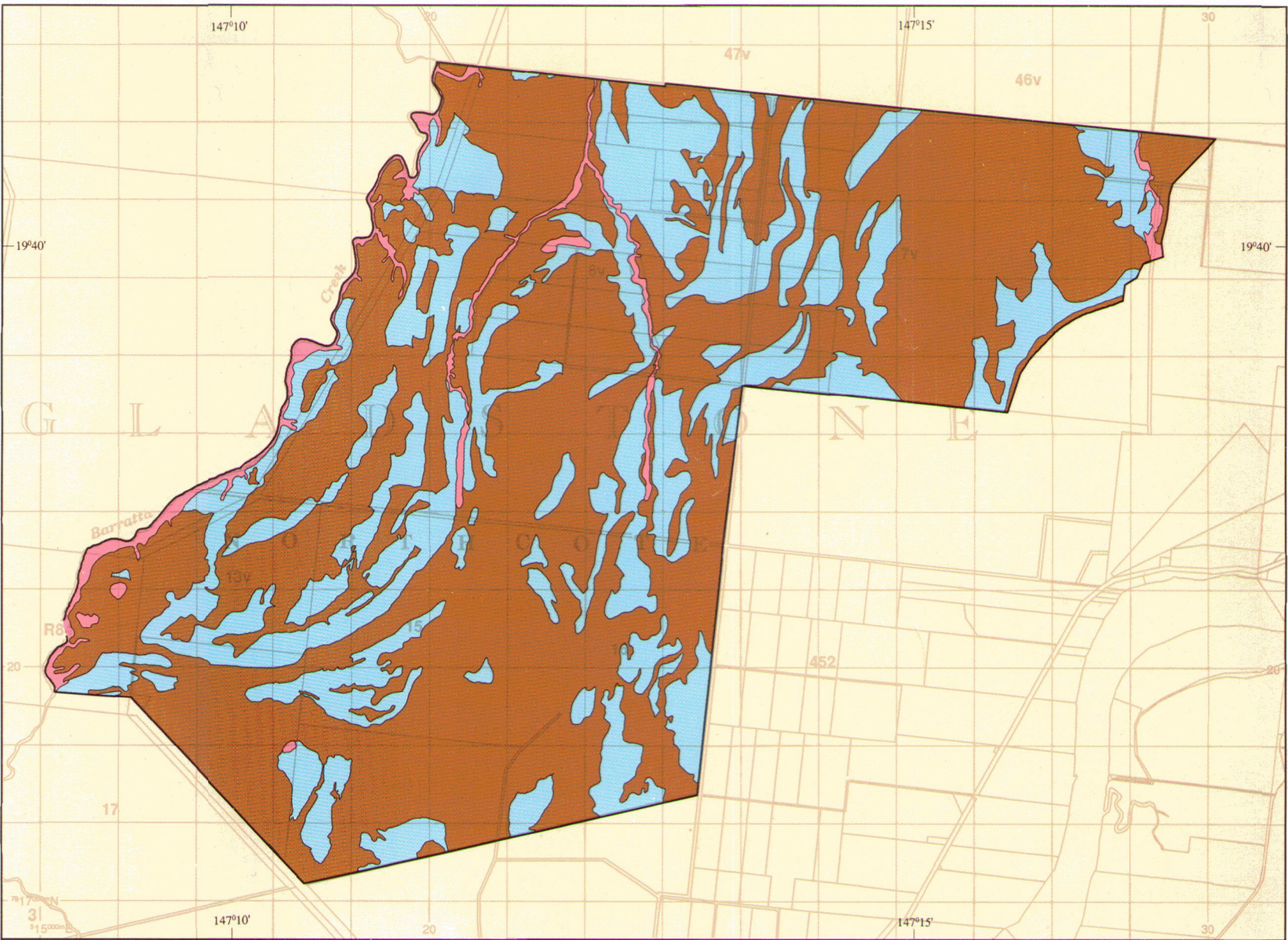


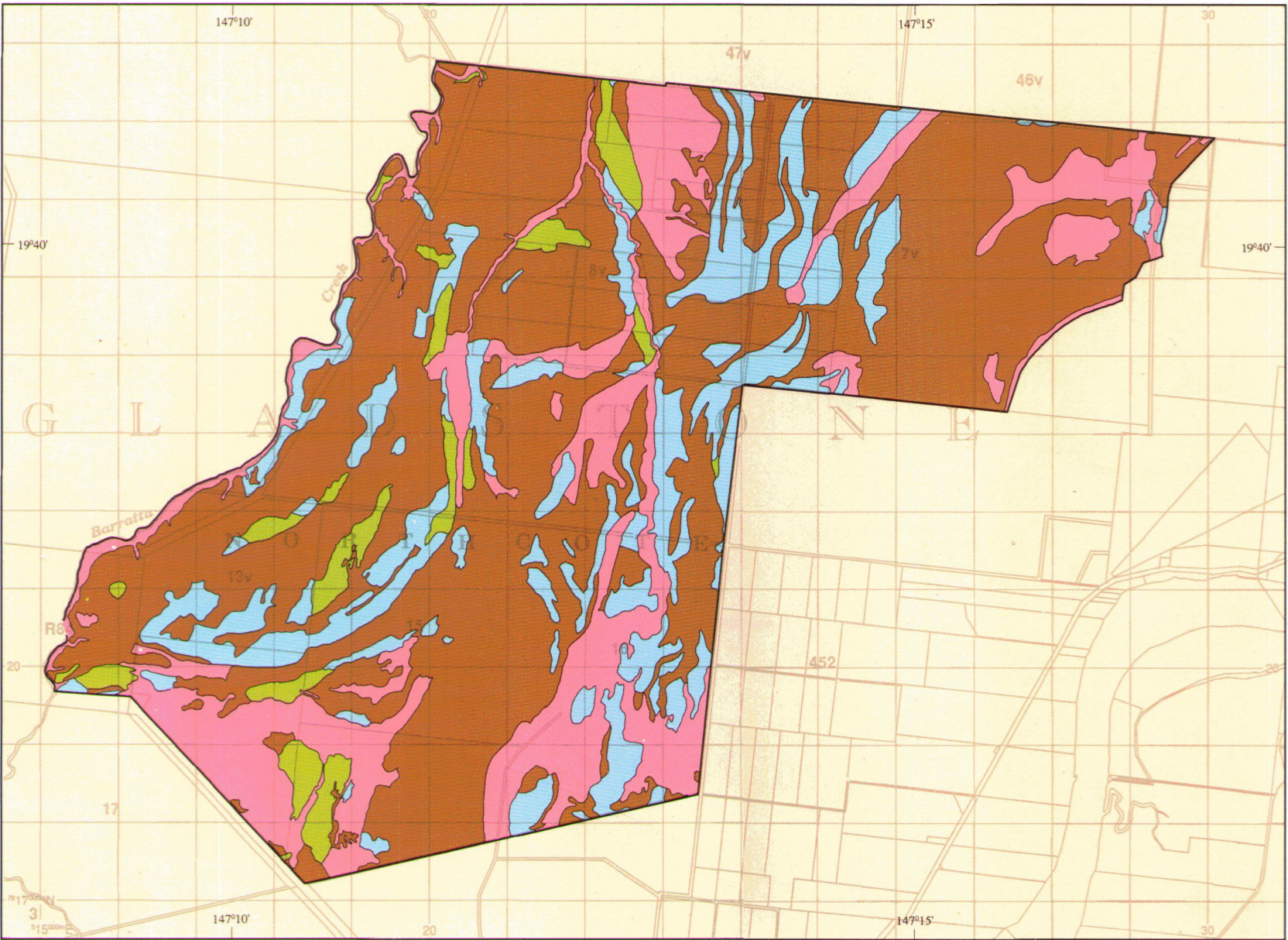
FURROW IRRIGATION OF SUGAR-CANE



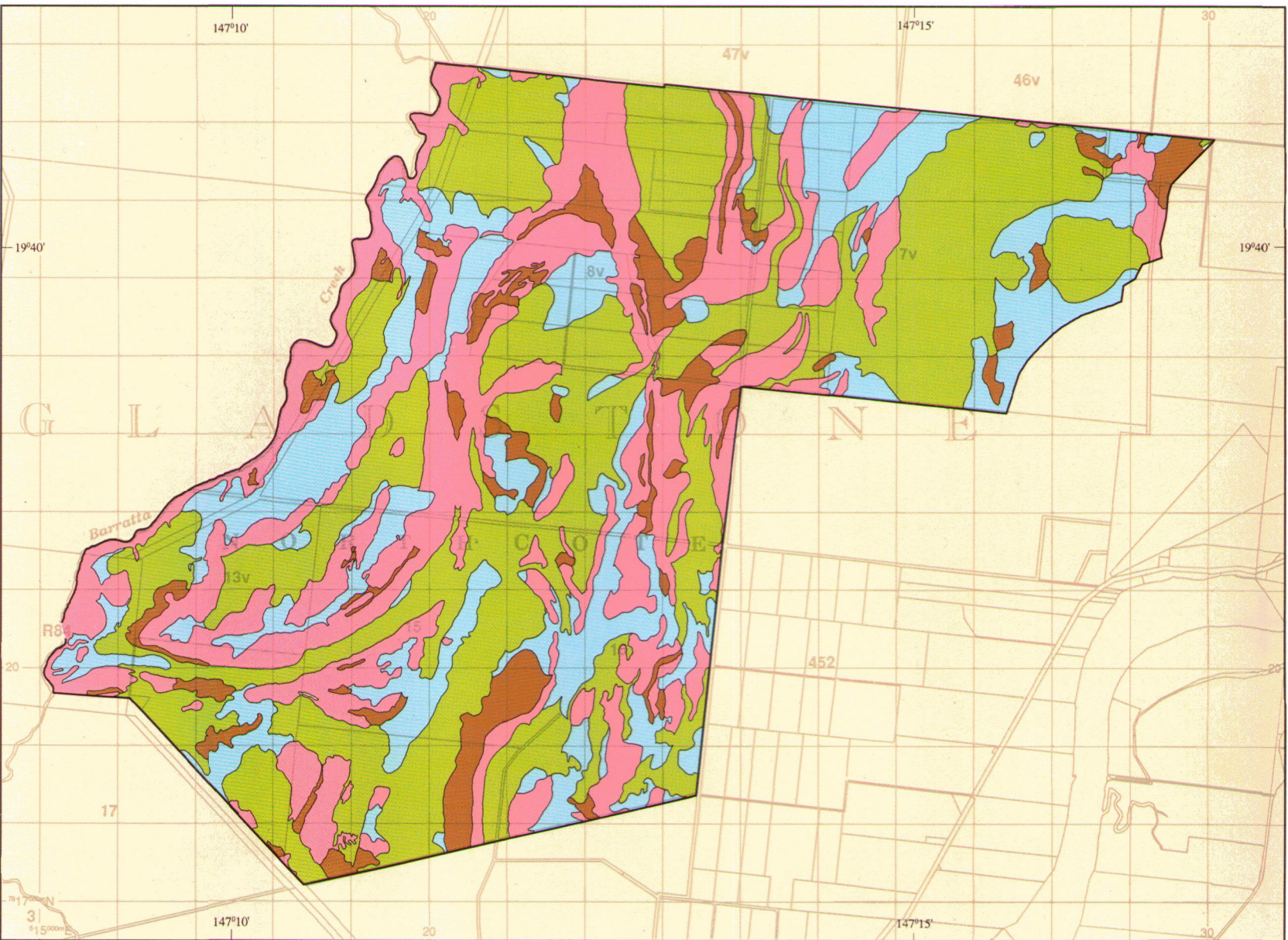
FURROW IRRIGATION OF CAPSICUMS



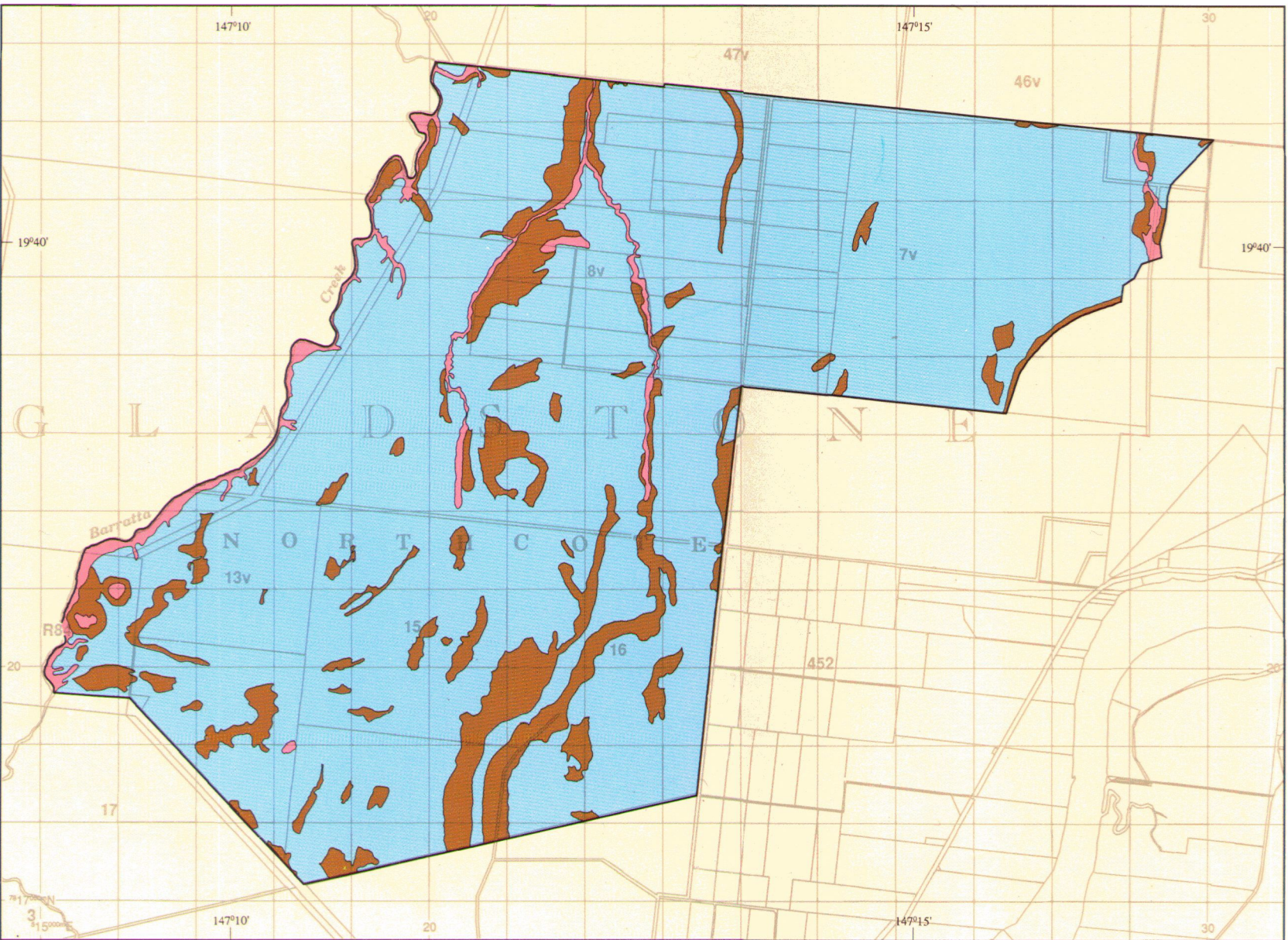
LOW VOLUME IRRIGATION OF MANGOES



RICE



FURROW IRRIGATION OF MAIZE



DISCLAIMER:
This is a scanned image and some detail may be illegible or lost. While every care is taken to ensure the accuracy of this product, the Department of Natural Resources and Mines makes no representations or warranties about its accuracy, reliability, completeness or suitability for any particular purpose and disclaims all responsibility and all liability (including without limitation, liability in negligence) for all expenses, losses, damages (including indirect or consequential damage) and costs which you might incur as a result of the product being inaccurate or incomplete in any way for any reason.

SCALE 1:75 000
metres 2000 1000 0 2 4 6 kilometres

GREY GRID LINES ARE 100 METRE INTERVALS OF THE AUSTRALIAN MAP GRID, ZONE 50
GRID VALUES ARE SHOWN IN FULL AT THE SOUTH WEST CORNER OF THE MAP

Transverse Mercator Projection

© QUEENSLAND GOVERNMENT, 1990

INTENSITY STATEMENT

This assessment uses the results of a high intensity soil survey. The soil survey was based on aerial photograph interpretation and ground observations of the order of one observation to an area of 4-6 hectares.

REFERENCE

- Class 1 Suitable land with negligible limitations
- Class 2 Suitable land with minor limitations
- Class 3 Suitable land with moderate limitations
- Class 4 Marginal land - presently unsuitable
- Class 5 Unsuitable land

NOTE

Land is classified on the basis of a specified land use which allows optimum production with minimal degradation to the land resource in the long term. Current technology and management are assumed and the land was assessed as it was found at the time of the survey.

SURVEY by J.I. McClurg, Land Resources Branch, Queensland Department of Primary Industries, Ayr.

CARTOGRAPHY by M. Bryant, Land Resources Branch, Queensland Department of Primary Industries, Brisbane.

BASE MAP compiled from the 1:25 000 Topographic Series supplied by the Division of Information, Queensland Department of Lands, and reproduced with the permission of the Surveyor General, Brisbane.

PRINTED by GOPRINT, Brisbane, 1990.