



REFERENCE

GRANITIC HIGHLANDS

- N** Norman (300 km²). Hills, inselbergs, widespread top outcrops and narrow valleys on Stanthorpe Adamellite; siliceous sands; complex layered open-forest with New England blackbutt, silver-topped stringybark and Deane's gum prominent.
- Su** Summit (100 km²). Plateau of moderate relief on Ruby Creek Granite and Stanthorpe Adamellite; yellow and gleyed podzols and siliceous sands; mainly cleared woodland of brown box and New England peppermint with open forest on hills, mainly of New England blackbutt and Deane's gum prominent.
- Ms** Magnus (170 km²). Steep, rocky ridges and irregular colluvial slopes on Ruby Creek Granite and Stanthorpe Adamellite; siliceous sands; open-forest of silver-topped stringybark and mountain gum with black cypress pine, woodland of brown box on lower slopes.

GRANITIC BASINS

- Eu** Eukery (190 km²). Hills and plains of low to moderate relief on Stanthorpe Adamellite and Ruby Creek Granite; yellow and gleyed podzols and siliceous sands; mainly cleared woodland of New England blackbutt, silver-topped stringybark and, in places, Deane's gum.
- Se** Severlea (270 km²). Plains of moderate relief and low hills on Stanthorpe Adamellite; yellow and gleyed podzols and siliceous sands; mainly cleared woodland of brown box, broad-leaved stringybark and apple box, with layered open-forest of mainly New England blackbutt and silver-topped stringybark on hills.
- Wi** Washpool (140 km²). Plains of moderate relief with colluvial and alluvial slopes and fringing hills on Stanthorpe Adamellite and minor traprock; texture contrast soils and minor shallow gravelly loams; minor siliceous sands; mainly cleared woodland; in the north, blue gum with some yellow box, in the south, brown box and fuzzy box and, on hills, silver-leaved ironbark and drooping ironbark.

GRANITIC BASINS IN TRAPROCK HILLS

- Ev** Evandale (100 km²). Eroded greywacke granite basin of depositional slopes with some erosion on upper slopes and an aureole of steep traprock hills; acid to neutral texture contrast soils and minor siliceous sands, shallow loamy lithosols; cleared woodland of brown box, with occasional poplar box, on lower slopes and narrow-leaved ironbark and/or blue gum on upper slopes.
- I** Ironpot (500 km²). Low stony hills and depressions of moderate relief, on Herries Adamellite and minor Ruby Creek Granite, with remnants of Marburg Sandstone cover and surrounded by traprock hills of intense relief; shallow, gravelly loams, texture contrast soils and siliceous sands; cleared woodland of brown box and yellow box, on lower slopes, and narrow-leaved ironbark on upper slopes with mountain gum on steepest parts.

TRAPROCK HIGHLANDS

- J** Jibbinbar (240 km²). Intensely dissected traprock mountains and minor outcrops of Ruby Creek Granite; shallow, gravelly loams and shallow, gravelly, texture contrast soils; woodland of varied composition, mainly mountain gum and drooping ironbark in the east and silver-leaved ironbark in the west of area.
- R** Roberts (110 km²). Steep hills on traprock with minor Stanthorpe Adamellite hills and depressions; shallow, gravelly loams, siliceous sands and deep, texture contrast soils; cleared woodland of brown box and occasional fuzzy box on lower slopes, layered woodland of mountain gum on hillsides, and rarely open forest of narrow-leaved peppermint and Deane's white gum on highest parts.
- A** Arcot (110 km²). Deeply dissected traprock hills; shallow, gravelly loams and shallow, gravelly, texture contrast soils; layered woodland of silver-leaved ironbark, mountain gum and white box.

CENTRAL TRAPROCK RIDGES AND HILLS

- Th** Thane (570 km²). Steep to moderately steep traprock ridges and hills with incised valleys; shallow, gravelly loams and shallow, gravelly, texture contrast soils; woodland of narrow-leaved ironbark and mountain gum or spotted gum, minor woodland of brown box, mainly cleared.
- Go** Gore (1080 km²). Steep traprock ridges, hills and scarps with narrow valleys; shallow, gravelly loams and shallow, gravelly, texture contrast soils; extensively cleared woodland of mountain gum and narrow-leaved ironbark, and brown box with some yellow box on lower slopes.
- P** Pikeadale (1030 km²). Low traprock hills with minor valley side slopes of moderate relief; shallow, gravelly loams and shallow, gravelly, texture contrast soils; woodland of narrow-leaved ironbark and mountain gum and cleared woodland of brown box with some yellow box and white box on lower slopes.

TRAPROCK FOOTHILLS

- Te** Texas (530 km²). Low traprock hills and minor alluvial and colluvial areas of mixed lithology; shallow, gravelly loams, shallow, texture contrast soils and minor terra rossa soils, minor grey and brown cracking clays; woodland of narrow-leaved and silver-leaved ironbark and cleared woodland of brown box, with lesser poplar box and maliee box with patches of brigalow on lower slopes.
- GI** Glenlyon (610 km²). Deeply dissected traprock hills and minor alluvial areas; shallow, gravelly loams, texture contrast soils; mainly cleared woodland of silver-leaved ironbark, often with rusty gum and, on lower slopes, brown box with some yellow box.

TRAPROCK SCARPS AND BASINS

- Bo** Bonshaw (380 km²). Traprock scarps and foothills and broad alluvial plains; shallow, gravelly loams and shallow, deep texture contrast soils, minor dark clays and dark structured earths; woodland of silver-leaved ironbark and mountain gum with cleared woodland of brown box and yellow box on lower slopes.
- Wo** Warro (840 km²). Steep hills, scarps and foothills on traprock and minor granite intrusions with basins of low relief; shallow, gravelly loams and shallow, gravelly, texture contrast soils, minor deep texture contrast soils; woodland of narrow-leaved ironbark and, on lower slopes, mainly cleared white box and brown box.

SANDSTONE HILLS AND ALLUVIAL PLAINS

- L** Leslie (160 km²). Hills and minor scarps on flat-lying Marburg Sandstone with broad alluvial plains; red, massive earths, brown texture contrast soils and black to brown, cracking clays; woodland of narrow-leaved ironbark with softwood or heath-like understorey on upper slopes, wood of brown box and poplar box on lower slopes and river red gum on alluvia, all mainly cleared.
- C** Canal (300 km²). Elevated plains of low relief and minor low scarps on sub-horizontal Marburg Sandstone, with minor traprock hills and alluvial plains; sandy, texture contrast soils and siliceous sands; layered woodland of narrow-leaved ironbark, often with rusty gum, on upper slopes, cleared woodland of brown box with occasional poplar box and maliee box on lower slopes.

WESTERN LOWLANDS

- D** Devine (600 km²). Plains of low relief on weathered, sub-horizontal Marburg Sandstone with minor traprock hills; deep, texture contrast soils and cracking clays; minor shallow, gravelly clays; layered woodland of narrow-leaved ironbark with mountain gum on traprock, rusty gum and cypress pine on sandstone, cleared woodland of poplar box and open forest of brigalow on lower slopes.
- Bu** Bundella (190 km²). Broad low relief plains of coarse alluvium and detrital material with traprock knolls and spurs; gravelly, texture contrast soils and shallow, gravelly loams; cleared woodland of varied composition, mainly narrow-leaved ironbark with rusty gum and cypress pine.
- Me** Magee (130 km²). Very low traprock hills and colluvial and alluvial slopes; texture contrast soils and shallow, gravelly loams; woodland of narrow-leaved ironbark with rusty gum and cypress pine, cleared woodland of poplar box on lower slopes.

COMPILATION:- Air photo interpretation, mapping and grouping of land systems by A.K. Willis; Description of land systems by A.K. Willis (Division of Land Utilisation), B. Powell (Agricultural Chemical Laboratory Branch) and L. Pedley (Botany Branch).
PREPARED by Division of Land Utilisation, Queensland Department of Primary Industries.

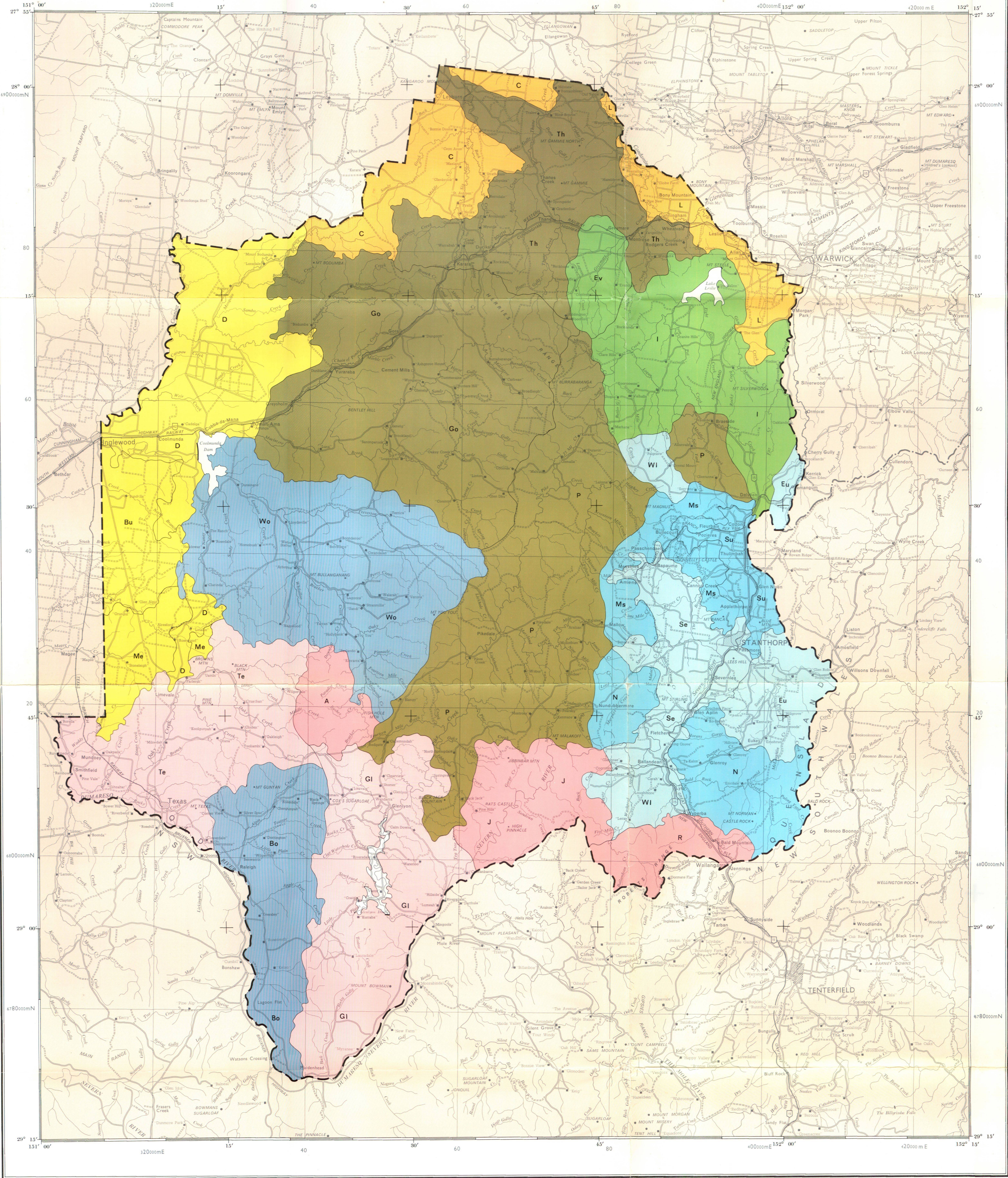
CARTOGRAPHIC BASE compiled by Drafting Branch, Department of Mines and Division of Land Utilisation, Department of Primary Industries, Queensland.

COLOUR SEPARATION by Lithographic Section, Survey Office, Department of Lands, Brisbane.

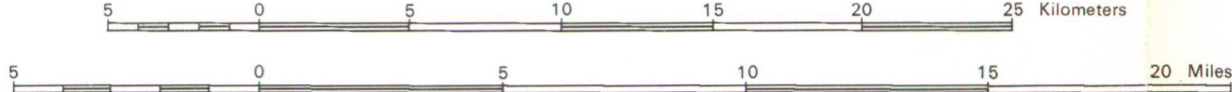
PRINTED BY S.G. Reid, Government Printer, Brisbane, 1975

DISCLAIMER:
This is a scanned image and some detail may be illegible or lost. While every care is taken to ensure the accuracy of this product, the Department of Natural Resources and Mines makes no representations or warranties about its accuracy, reliability, completeness or suitability for any particular purpose and disclaims all responsibility and all liability (including without limitation, liability in negligence) for all expenses, losses, damages (including indirect or consequential damage) and costs which you might incur as a result of the product being inaccurate or incomplete in any way for any reason.

THE GRANITE AND TRAPROCK AREA
OF SOUTH EAST QUEENSLAND
LAND SYSTEMS



SCALE 1: 250 000



UNIVERSAL TRANSVERSE MERCATOR PROJECTION
20 000 metres Australian Map Grid, zone 56.

Drawn by A.L. Chandica, R.J. Bellerio, C.M. Ellis.

KEY TO 1: 250 000 AREAS

SURAT	DALBY	IPSWICH	BRISBANE
ST GEORGE	GOONDIWINDI	WARWICK	TWEED HEADS
MOREE	INVERELL	GRAFTON	MACLEAN

