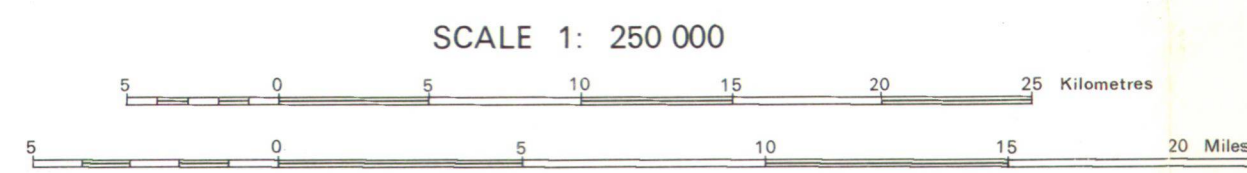
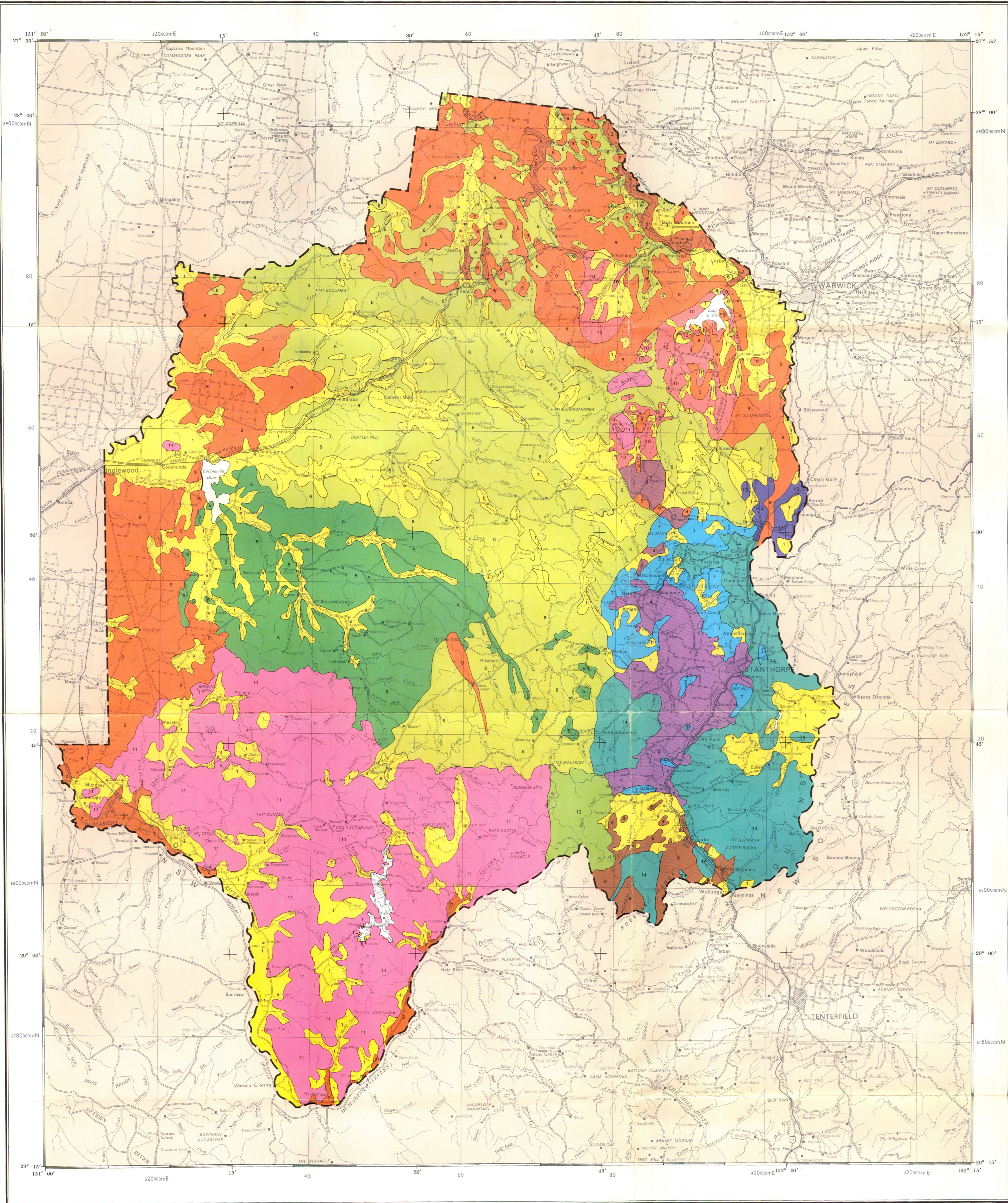




REFERENCE

- 1 *Eucalyptus microcarpa* (brown box) and *E. melliodora* (yellow box) sometimes with *E. piligiana* (mallee box) and/or *E. populnea* (poplar box) or *E. conica* (luzzy box).
- 2 *E. tereticornis* (blue gum) or *E. camaldulensis* (river red gum).
- 3 *E. tereticornis* (blue gum) and *E. melliodora* (yellow box).
- 4 *E. tereticornis* (blue gum) or *E. blakelyi* (Blakely's gum) and *E. caliginosa* (broad-leaved stringybark).
- 5 *E. albens* (white box) and sometimes *E. crebra* (narrow-leaved ironbark).
- 6 *E. dealbata* (tumble-down gum) and *E. crebra* (narrow-leaved ironbark).
- 7 *E. dealbata* (tumble-down gum) and *E. laevopinea* (silver-topped stringybark).
- 8 *E. dealbata* (tumble-down gum) and *E. caleyi* (Caley's ironbark).
- 9 *E. crebra* (narrow-leaved ironbark) and *E. maculata* (spotted gum) or *Angophora costata* (rusty gum) and *Callitris columellaris* (white cypress) and/or *Casuarina luehmannii* (bull oak) and/or shrubs.
- 10 *E. crebra* (narrow-leaved ironbark) and *E. tereticornis* (blue gum).
- 11 *E. melanophloia* (silver-leaved ironbark).
- 12 *E. caleyi* (Caley's ironbark).
- 13 *E. andrewsii* (New England Blackbutt) and *E. tereticornis* (blue gum).
- 14 Complex of communities with *E. andrewsii* (New England Blackbutt) predominant.

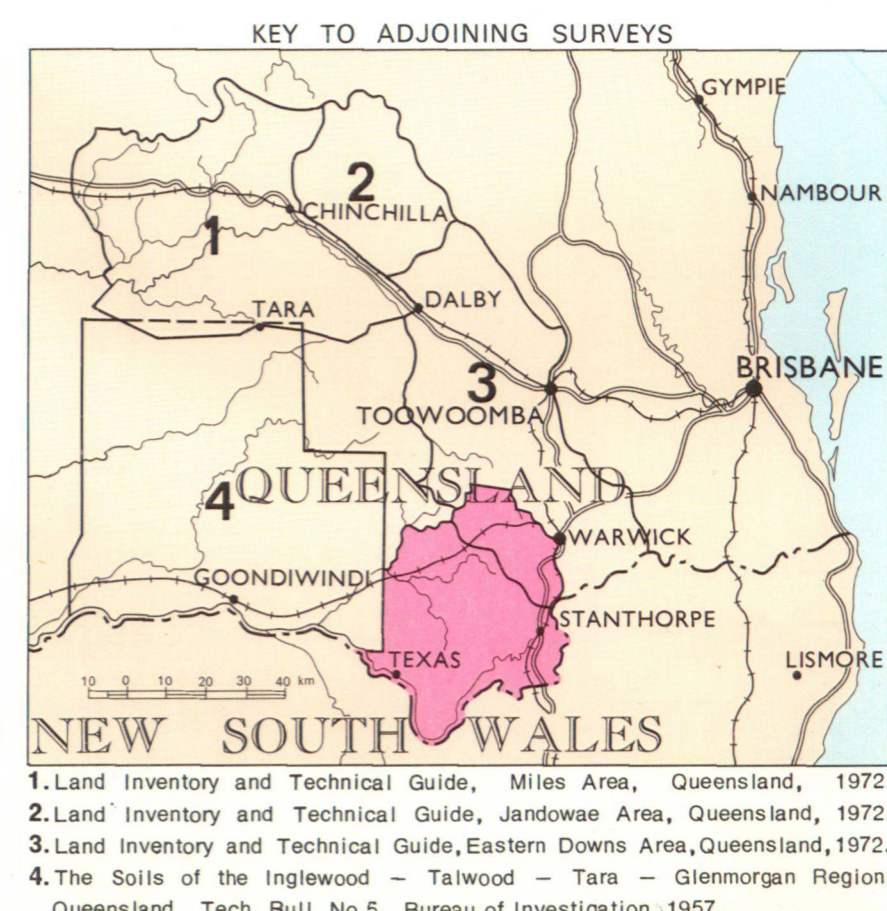
NOTE
Details of the composition and structure of plant communities, for land units in the Granite and Traprock Area, are to be found in section 3 of the text.



Drawn by C.M.Ellis, P.Zande.

KEY TO 1: 250 000 AREAS

SURAT	DALBY	IPSWICH	BRISBANE
ST GEORGE	GOONDIWINDI	WARWICK	TWEED HEADS
MOREE	INVERELL	GRAFTON	MACLEAN



COMPILATION:- Vegetation survey, mapping and description by L. Pedley, Botany Branch.
PREPARED by Division of Land Utilisation, Queensland Department of Primary Industries.
CARTOGRAPHIC BASE compiled by Drafting Branch, Department of Mines and Division of Land Utilisation, Department of Primary Industries, Queensland.
PRINTED by S.G. Reid, Government Printer, Brisbane, 1975.

DISCLAIMER:
This is a scanned image and some detail may be illegible or lost. While every care is taken to ensure the accuracy of this product, the Department of Natural Resources and Mines makes no representations or warranties about its accuracy, reliability, completeness or suitability for any particular purpose and disclaims all responsibility and all liability (including without limitation, liability in negligence) for all expenses, losses, damages (including indirect or consequential damage) and costs which you might incur as a result of the product being inaccurate or incomplete in any way for any reason.

THE GRANITE AND TRAPROCK AREA
OF SOUTH EAST QUEENSLAND
VEGETATION

