

# LEGEND

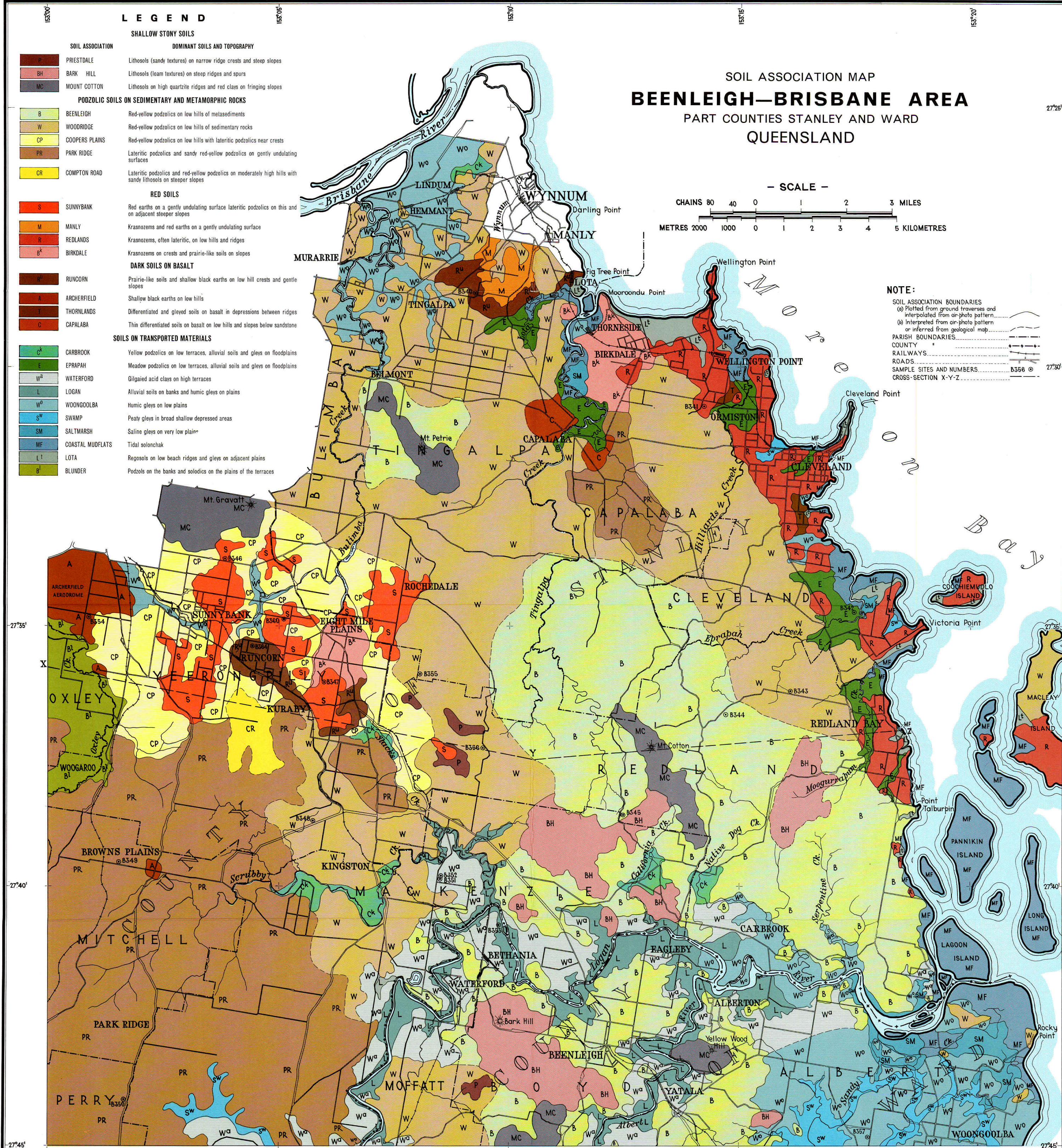
SHALLOW STONY SOILS	
SOIL ASSOCIATION	
P	PRIESTDALE Lithosols (sandy textures) on narrow ridge crests and steep slopes
BH	BARK HILL Lithosols (loam textures) on steep ridges and spurs
MC	MOUNT COTTON Lithosols on high quartzite ridges and red clays on fringing slopes
PODZOLIC SOILS ON SEDIMENTARY AND METAMORPHIC ROCKS	
B	BEENLEIGH Red-yellow podzolics on low hills of metasediments
W	WOODRIDGE Red-yellow podzolics on low hills of sedimentary rocks
CP	COOPERS PLAINS Red-yellow podzolics on low hills with lateritic podzolics near crests
PR	PARK RIDGE Lateritic podzolics and sandy red-yellow podzolics on gently undulating surfaces
CR	COMPTON ROAD Lateritic podzolics and red-yellow podzolics on moderately high hills with sandy lithosols on steeper slopes
RED SOILS	
S	SUNNYBANK Red earths on a gently undulating surface lateritic podzolics on this and on adjacent steeper slopes
M	MANLY Krasnozems and red earths on a gently undulating surface
R	REDLANDS Krasnozems, often lateritic, on low hills and ridges
B <sup>k</sup>	BIRKDALE Krasnozems on crests and prairie-like soils on slopes
DARK SOILS ON BASALT	
R <sup>u</sup>	RUNCORN Prairie-like soils and shallow black earths on low hill crests and gentle slopes
A	ARCHERFIELD Shallow black earths on low hills
T	THORNLANDS Differentiated and gleyed soils on basalt in depressions between ridges
C	CAPALABA Thin differentiated soils on basalt on low hills and slopes below sandstone
SOILS ON TRANSPORTED MATERIALS	
C <sup>k</sup>	CARBROOK Yellow podzolics on low terraces, alluvial soils and gleys on floodplains
E	EPRAPAH Meadow podzolics on low terraces, alluvial soils and gleys on floodplains
W <sup>a</sup>	WATERFORD Gleigaed acid clays on high terraces
L	LOGAN Alluvial soils on banks and humic gleys on plains
W <sup>o</sup>	WOONGOOLBA Humic gleys on low plains
S <sup>w</sup>	SWAMP Peaty gleys in broad shallow depressed areas
SM	SALT MARSH Saline gleys on very low plains
MF	COASTAL MUDFLATS Tidal solonchak
L <sup>t</sup>	LOTA Regosols on low beach ridges and gleys on adjacent plains
B <sup>i</sup>	BLUNDER Podzols on the banks and solonchaks on the plains of the terraces

## SOIL ASSOCIATION MAP BEENLEIGH—BRISBANE AREA PART COUNTIES STANLEY AND WARD QUEENSLAND



### NOTE:

- SOIL ASSOCIATION BOUNDARIES  
(a) Plotted from ground traverses and interpolated from air-photo pattern  
(b) Interpreted from air-photo pattern or inferred from geological map
- PARISH BOUNDARIES
- COUNTY
- RAILWAYS
- ROADS
- SAMPLE SITES AND NUMBERS
- CROSS-SECTION X-Y-Z



FIELD OPERATIONS  
C.S.I.R.O. Division of Soils  
1957

Cartography by M. C. COULLS 1960

This map is a scanned image and some detail may be illegible or lost. All rights are reserved and no part of this publication covered by copyright may be reproduced or copied in any form or by any means except with the written permission of CSIRO Division of Land and Water. To the extent permitted by law, CSIRO excludes all liability to any person or organisation for expenses, losses, liability and costs arising directly or indirectly from using this publication (in whole or in part) and any information or material contained in it. The publication must not be used as a means of endorsement without the prior written consent of CSIRO.

SOIL SURVEYOR  
G. G. Beckmann

To accompany SOILS AND LAND USE SERIES No. 50