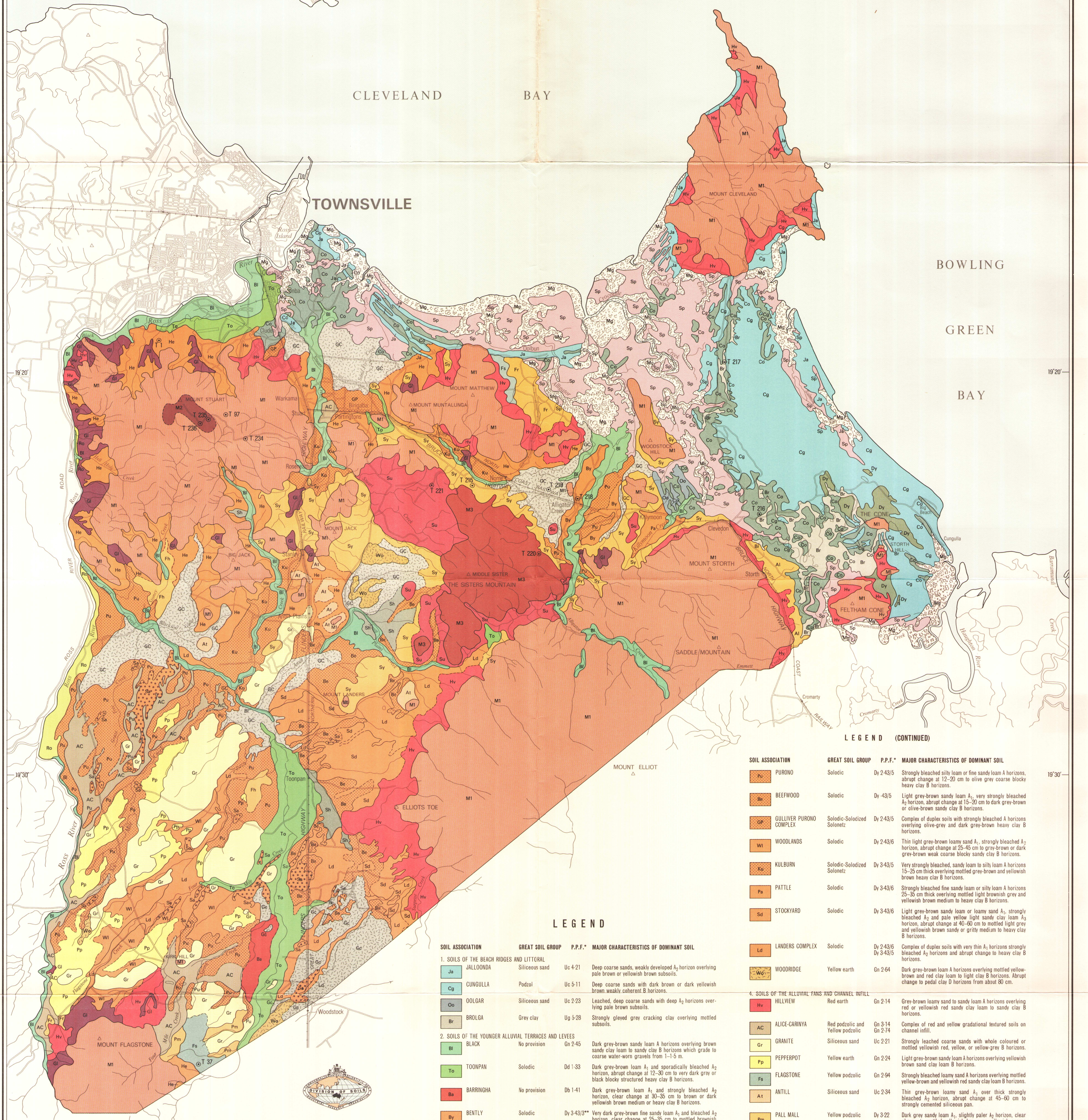


SCALE 1:100,000  
KILOMETRES 1 0 1 2 3 4 5 6 7 8 9 10 KILOMETRES

Soil Survey by  
G. G. MURTHA, CSIRO  
Division of Soils



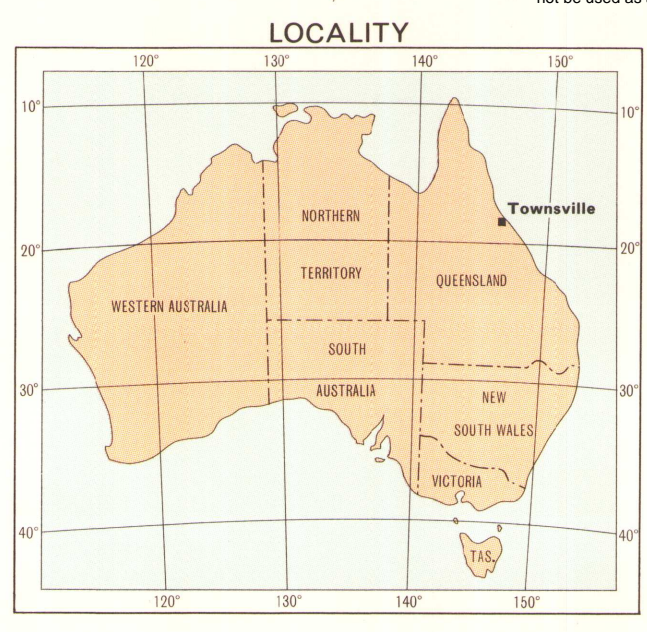
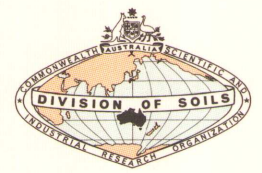
LEGEND (CONTINUED)

SOIL ASSOCIATION	GREAT SOIL GROUP	P.F.F.*	MAJOR CHARACTERISTICS OF DOMINANT SOIL
Pu	Solodic	Dy 2 4/35	Strongly bleached silty loam or fine sandy loam A horizons, abrupt change at 12-20 cm to olive grey coarse blocky heavy clay B horizons.
Be	Solodic	Dy 4/35	Light grey-brown sandy loam A <sub>1</sub> , very strongly bleached A <sub>2</sub> horizon, abrupt change at 15-20 cm to dark grey-brown or olive-brown sandy clay B horizons.
Gp	Solodic-Solozized Solonetz	Dy 2 4/35	Complex of duplex soils with strongly bleached A horizons overlying olive-grey and dark grey-brown heavy clay B horizons.
Wl	Solodic	Dy 2 4/36	Thin light grey-brown loamy sand A <sub>1</sub> , strongly bleached A <sub>2</sub> horizons, abrupt change at 25-45 cm to grey-brown or dark grey-brown weak coarse blocky sandy clay B horizons.
Ku	Solodic-Solozized Solonetz	Dy 3 4/35	Very strongly bleached, sandy loam to silty loam A horizons 15-25 cm thick overlying mottled grey-brown and yellowish brown heavy clay B horizons.
Pa	Solodic	Dy 3 4/36	Strongly bleached fine sandy loam or silty loam A horizons 25-35 cm thick overlying mottled light brownish grey and yellowish brown medium to heavy clay B horizons.
Sd	Solodic	Dy 3 4/36	Light grey-brown sandy loam or loamy sand A <sub>1</sub> , strongly bleached A <sub>2</sub> and pale yellow light sandy clay loam A <sub>3</sub> horizon, abrupt change at 40-60 cm to mottled light grey and yellowish brown sandy or gritty medium to heavy clay B horizons.
Ld	Solodic	Dy 2 4/36 Dy 3 4/35	Complex of duplex soils with very thin A <sub>1</sub> horizons strongly bleached A <sub>2</sub> horizons and abrupt change to heavy clay B horizons.
Wo	Yellow earth	Gn 2 6/4	Dark grey-brown loam A horizons overlying mottled yellow-brown and red clay loam to light clay B horizons. Abrupt change to peddy clay D horizons from about 80 cm.
<b>4. SOILS OF THE ALLUVIAL FANS AND CHANNEL INFILL</b>			
Hv	Red earth	Gn 2 1/4	Grey-brown loamy sand to sandy loam A horizons overlying red or yellowish red sandy clay loam to heavy clay B horizons.
Ac	Red podzolic and Yellow podzolic	Gn 3 1/4 Gn 2 7/4	Complex of red and yellow gradational textured soils on channel infill.
Gr	Siliceous sand	Uc 2 2/1	Strongly leached coarse sands with whole coloured or mottled yellowish red, yellow, or yellow-grey B horizons.
Pp	Yellow earth	Gn 2 2/4	Light grey-brown sandy loam A horizons overlying yellowish brown sand clay loam B horizons.
Fs	Yellow podzolic	Gn 2 9/4	Strongly bleached loamy sand A horizons overlying mottled yellow-brown and yellowish red sandy clay loam B horizons.
At	Siliceous sand	Uc 2 3/4	Thin grey-brown loamy sand A <sub>1</sub> over thick strongly bleached A <sub>2</sub> horizon, abrupt change at 45-60 cm to strongly cemented siliceous pan.
Pm	Yellow podzolic	Dy 3 2/2	Dark grey sandy loam A <sub>1</sub> , slightly paler A <sub>2</sub> horizon, clear change to mottled yellowish brown on yellowish coarse blocky structured heavy clay B horizons.
He	Solodic	Dy 3 4/36	Strongly bleached sandy loam A horizons, abrupt change at 20-40 cm to mottled brownish grey and yellowish brown heavy clay B horizons.
Sy	Yellow podzolic	Dy 2 2/1	Grey-brown silty or sandy clay loam A <sub>1</sub> over slightly paler A <sub>2</sub> horizon, clear change at 12-20 cm to yellowish brown sandy clay or medium clay B horizons.
Su	Non-calcareous brown soil	Dr 2 2/2	Very dark grey or grey-brown loam A <sub>1</sub> over a weakly developed clay loam A <sub>2</sub> horizon, clear change at 15-30 cm to dark red medium to heavy clay B horizons.
<b>5. SOILS OF THE HILLY AND MOUNTAINOUS LANDS</b>			
M1			Shallow to deep uniform sands (Uc 1-21, Uc 4-21, Uc 4-22), coarse massive earths (Gn 2 1/4, Gn 2/4) and red duplex soils (Dr 2 2/1, Dr 2 6/1).
M2			Shallow to moderately deep soils, acid duplex soils (Dy 3 4/1) dominant but there is a wide range of other duplex and gradational textured soils.
M3			Red duplex soils (Dr 2 2/2) similar to those of Stuart association.
<b>MISCELLANEOUS UNITS</b>			
Mg	MANGROVES		
Sp	SALT PANS		
Gf	GULLIED LANDS		

LEGEND

SOIL ASSOCIATION	GREAT SOIL GROUP	P.F.F.*	MAJOR CHARACTERISTICS OF DOMINANT SOIL
<b>1. SOILS OF THE BEACH RIDGES AND LITTORAL</b>			
Ja	Siliceous sand	Uc 4-21	Deep coarse sands, weakly developed A <sub>2</sub> horizon overlying pale brown or yellowish brown subsols.
Cg	Podzol	Uc 5-11	Deep coarse sands with dark brown or dark yellowish brown weakly coherent B horizons.
Oo	Siliceous sand	Uc 2 2/3	Leached, deep coarse sands with deep A <sub>2</sub> horizons overlying pale brown subsols.
Br	Grey clay	Ug 5 2/8	Strongly gleyed grey cracking clay overlying mottled subsols.
<b>2. SOILS OF THE YOUNGER ALLUVIAL TERRACES AND LEVEES</b>			
Bk	No provision	Gn 2 4/5	Dark grey-brown sandy loam A horizons overlying brown sandy clay loam to sandy clay B horizons which grade to coarse water-worn gravels from 1-1.5 m.
To	Solodic	Dd 1 3/3	Dark grey-brown loam A <sub>1</sub> and sporadically bleached A <sub>2</sub> horizons, abrupt change at 12-30 cm to very dark grey or black blocky structured heavy clay B horizons.
Ba	No provision	Dh 1 4/1	Dark grey-brown loam A <sub>1</sub> and strongly bleached A <sub>2</sub> horizons, clear change at 30-35 cm to brown or dark yellowish brown medium or heavy clay B horizons.
Bn	Solodic	Dy 3 4/33**	Very dark grey-brown fine sandy loam A <sub>1</sub> and bleached A <sub>2</sub> horizons, clear change at 25-35 cm to mottled brownish grey and yellowish brown medium to heavy clay B horizons.
Ro	Yellow earth	Gn 2 2/4	Grey-brown sandy loam A horizons overlying brown or yellowish brown sandy clay loam B horizons. Abrupt change at 40-70 cm to peddy heavy clay D horizon.
<b>3. SOILS OF THE OLDER ALLUVIAL PLAINS</b>			
Co	Solodic-Solonchak intergrade	Dd 2 4/3	Strongly bleached fine sandy loam or loam A horizons to 10 cm thick overlying faintly mottled very dark greyish brown and olive heavy clay B horizons.
Dy	No provision	Dd 2 1/3	Thin very dark grey or black sandy loam A <sub>1</sub> horizon, abrupt change at 60 cm to brown or dark greyish brown heavy clay, carbonate nodules from 80 cm.
Sh	Black earth	Ug 5 1/6	Very dark grey or black strong blocky structured heavy clay, gradual change at 60 cm to brown or dark greyish brown heavy clay, carbonate nodules from 80 cm.
Gc	Solodic and Grey clay	Dy 2 3/3/5 Ug 5 2/8	Complex of solodic soils in the depressions and grey cracking clays on the mounds.
Al	Soloth	Dy 3 4/1/6	Strongly bleached loamy sand or sandy loam A horizons 25-40 cm thick overlying mottled light brownish grey and yellowish brown heavy clay B horizons.
Fh	Soloth	Dy 3 4/1/6	Grey-brown fine sandy loam A <sub>1</sub> and strongly bleached A <sub>2</sub> horizon, clear change at 30-55 cm to mottled pale brown and yellowish brown medium clay B horizons.
Fr	Soloth	Dy 3 8/1/6	Very strongly bleached loamsand A horizons 40-60 cm thick overlying cemented siliceous pan. Mottled massive sandy clays occur below the pan.
Sa	Solozized Solonetz	Dy 3 4/3/4	Very thin light brownish grey sandy loam A horizons overlying mottled dark greyish brown and yellowish brown heavy clay B horizons.

This map is a scanned image and some detail may be illegible or lost. All rights are reserved and no part of this publication covered by copyright may be reproduced or copied in any form or by any means except with the written permission of CSIRO Division of Land and Water. To the extent permitted by law, CSIRO excludes all liability to any person or organisation for expenses, losses, liability and costs arising directly or indirectly from using this publication (in whole or in part) and any information or material contained in it. The publication must not be used as a means of endorsement without the prior written consent of CSIRO.



ROADS .....  
RIVERS .....  
RAILWAYS .....  
SAMPLE SITES ..... T 235  
SOIL BOUNDARY .....  
LOCATION DOUTFULL .....