

QUEENSLAND ELECTORAL BOUNDARIES 2017



© Electoral Commission Queensland 2017. © The State of Queensland (Department of Natural Resources and Mines) 2015.



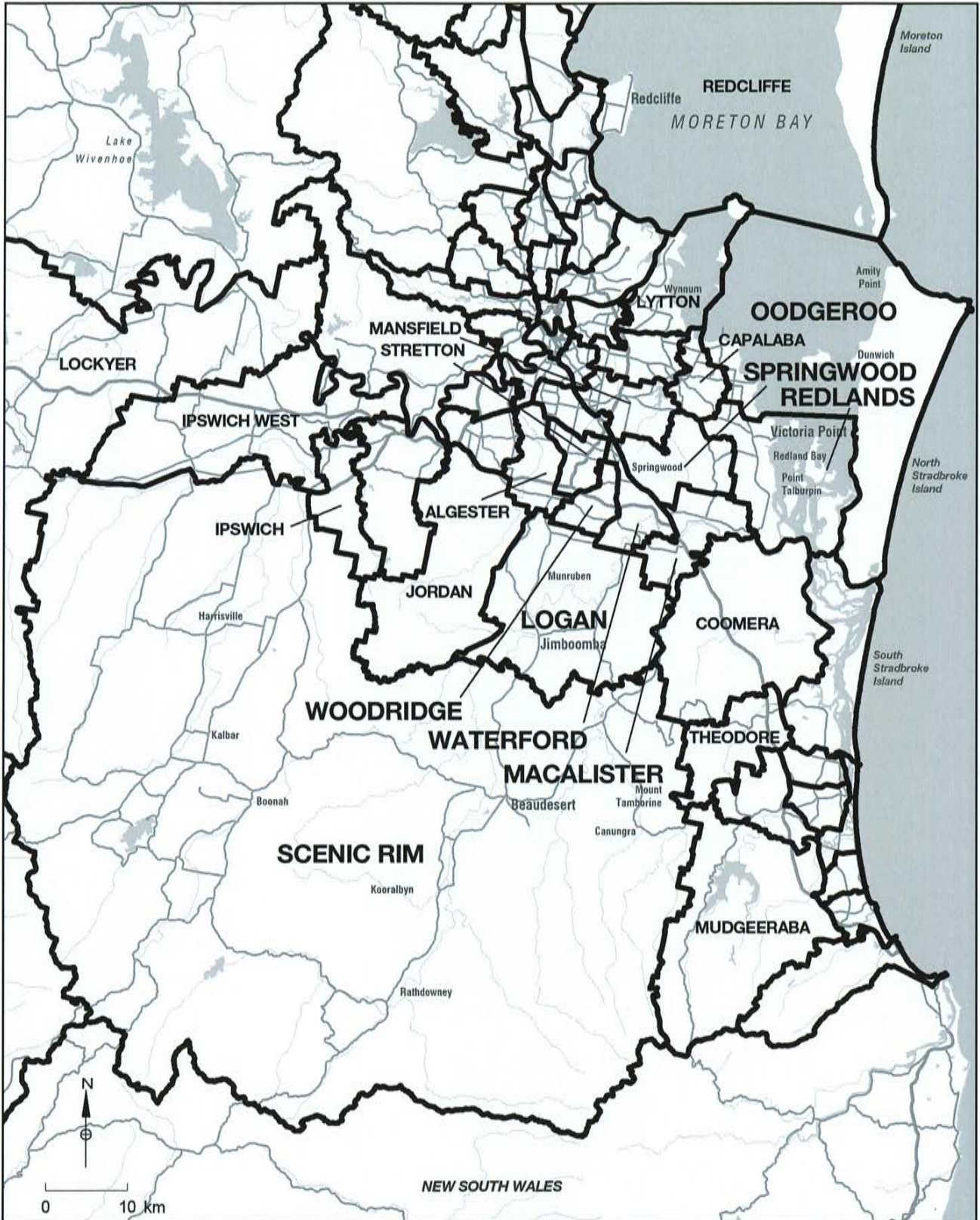
# QUEENSLAND ELECTORAL BOUNDARIES 2017 GOLD COAST AREA



© Electoral Commission Queensland 2017. © The State of Queensland (Department of Natural Resources and Mines) 2015.



# QUEENSLAND ELECTORAL BOUNDARIES 2017 BRISBANE to the GOLD COAST



© Electoral Commission Queensland 2017. © The State of Queensland (Department of Natural Resources and Mines) 2015.



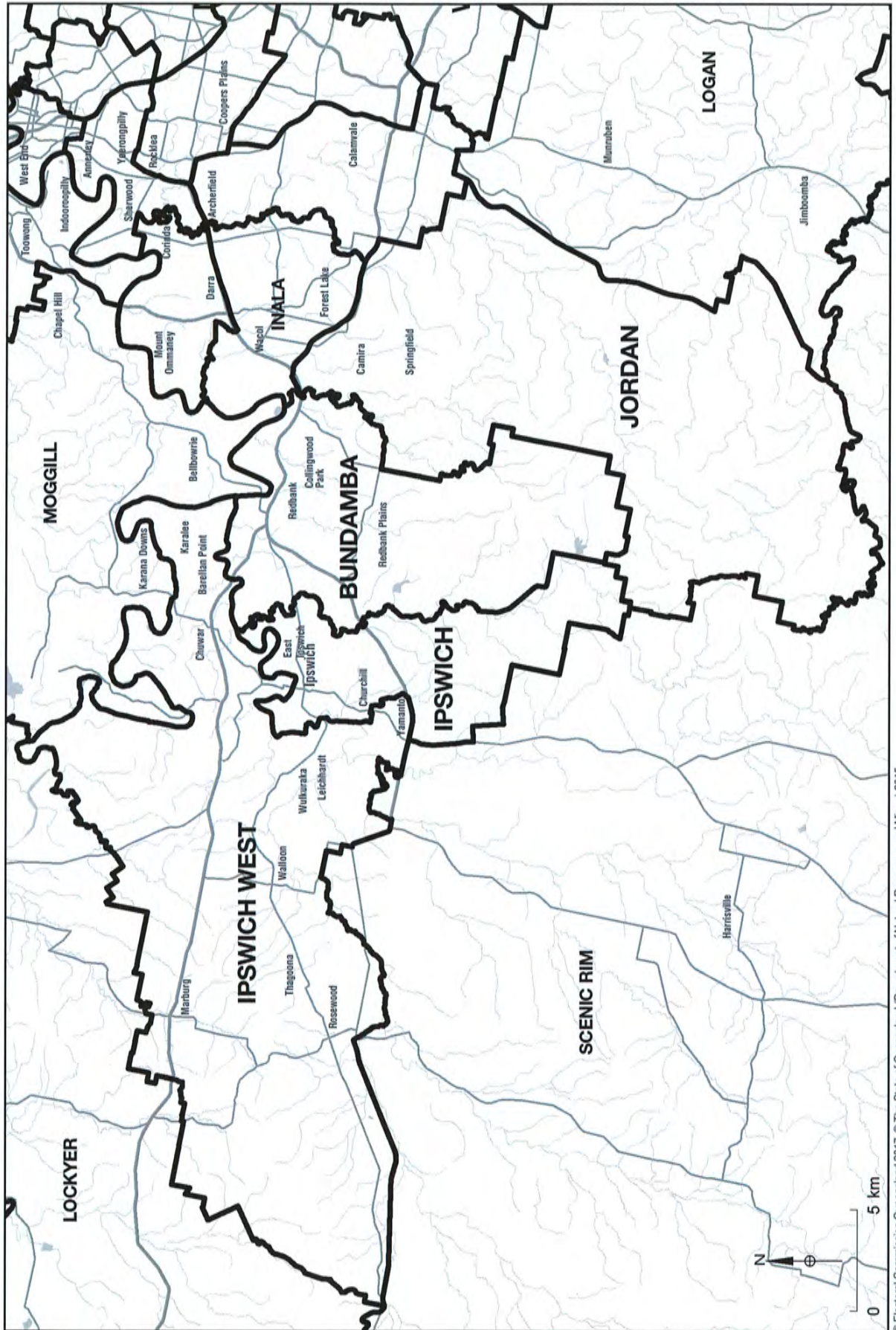
**QUEENSLAND ELECTORAL BOUNDARIES 2017  
BRISBANE SOUTH**



© Electoral Commission Queensland 2017. © The State of Queensland (Department of Natural Resources and Mines) 2015.



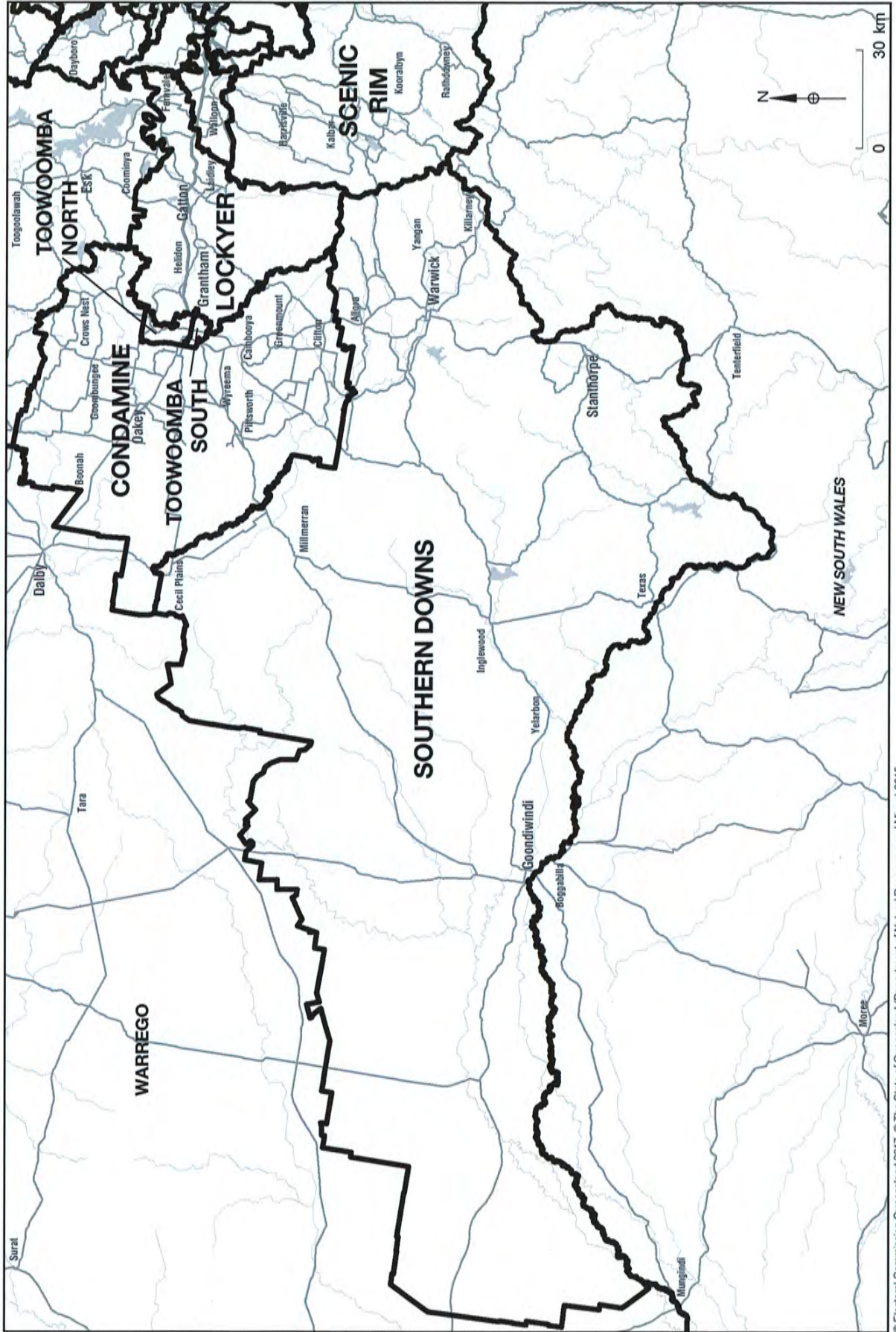
QUEENSLAND ELECTORAL BOUNDARIES 2017  
IPSWICH AREA



© Electoral Commission Queensland 2017. © The State of Queensland (Department of Natural Resources and Mines) 2015.



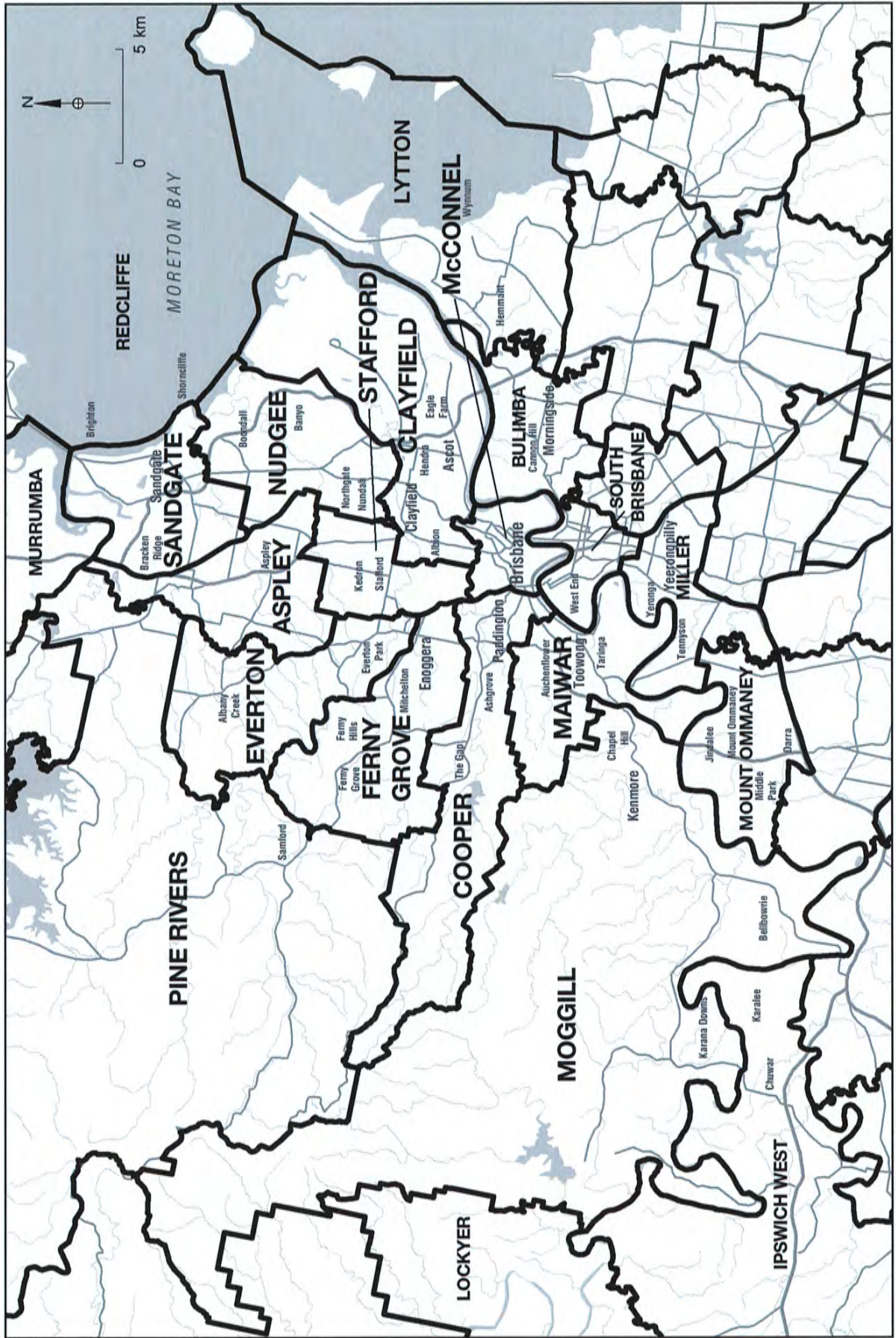
# QUEENSLAND ELECTORAL BOUNDARIES 2017 SOUTHERN QUEENSLAND



© Electoral Commission Queensland 2017. © The State of Queensland (Department of Natural Resources and Mines) 2015.



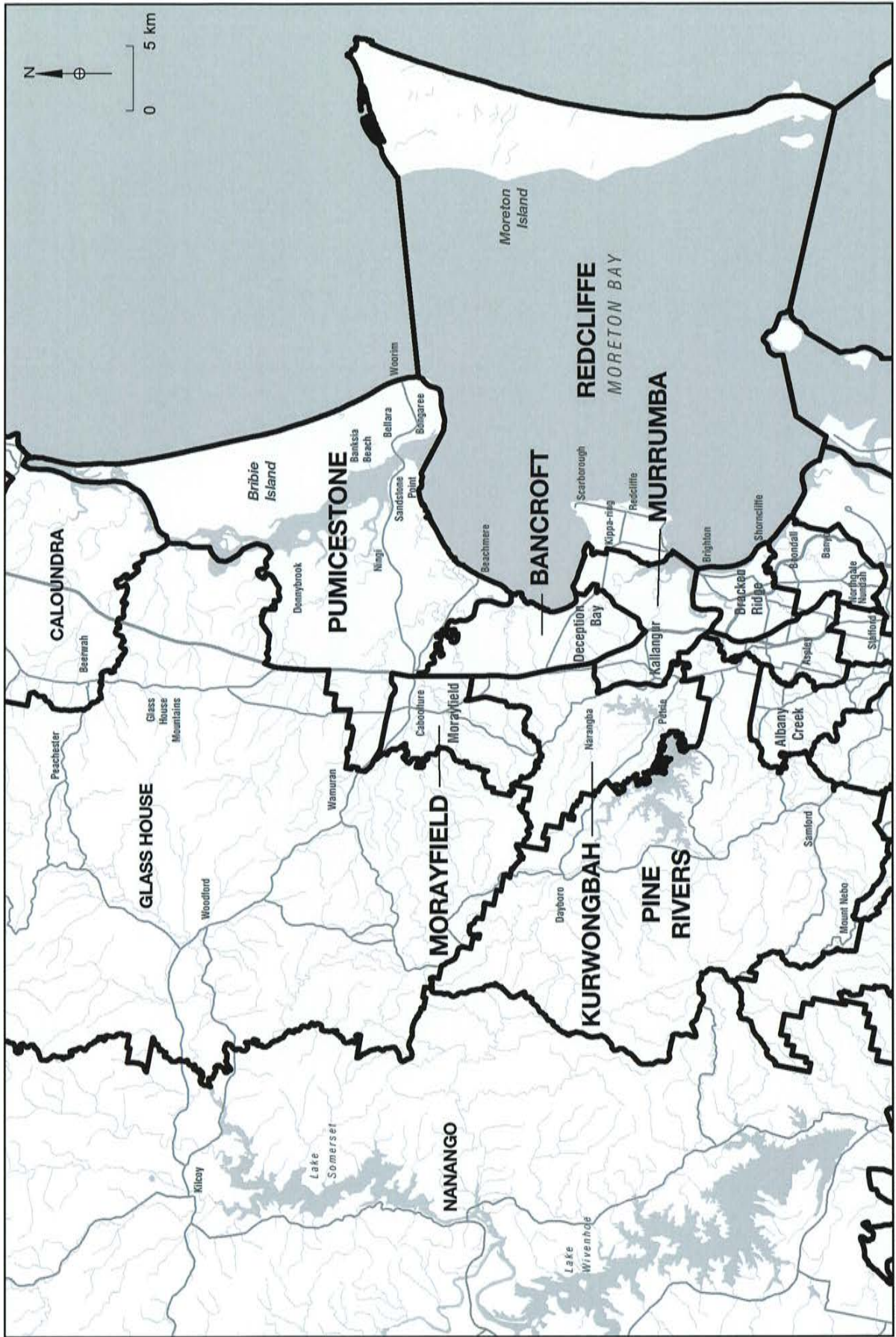
# QUEENSLAND ELECTORAL BOUNDARIES 2017 BRISBANE NORTH



© Electoral Commission Queensland 2017. © The State of Queensland (Department of Natural Resources and Mines) 2015.



# QUEENSLAND ELECTORAL BOUNDARIES 2017 BRISBANE to SUNSHINE COAST AREA





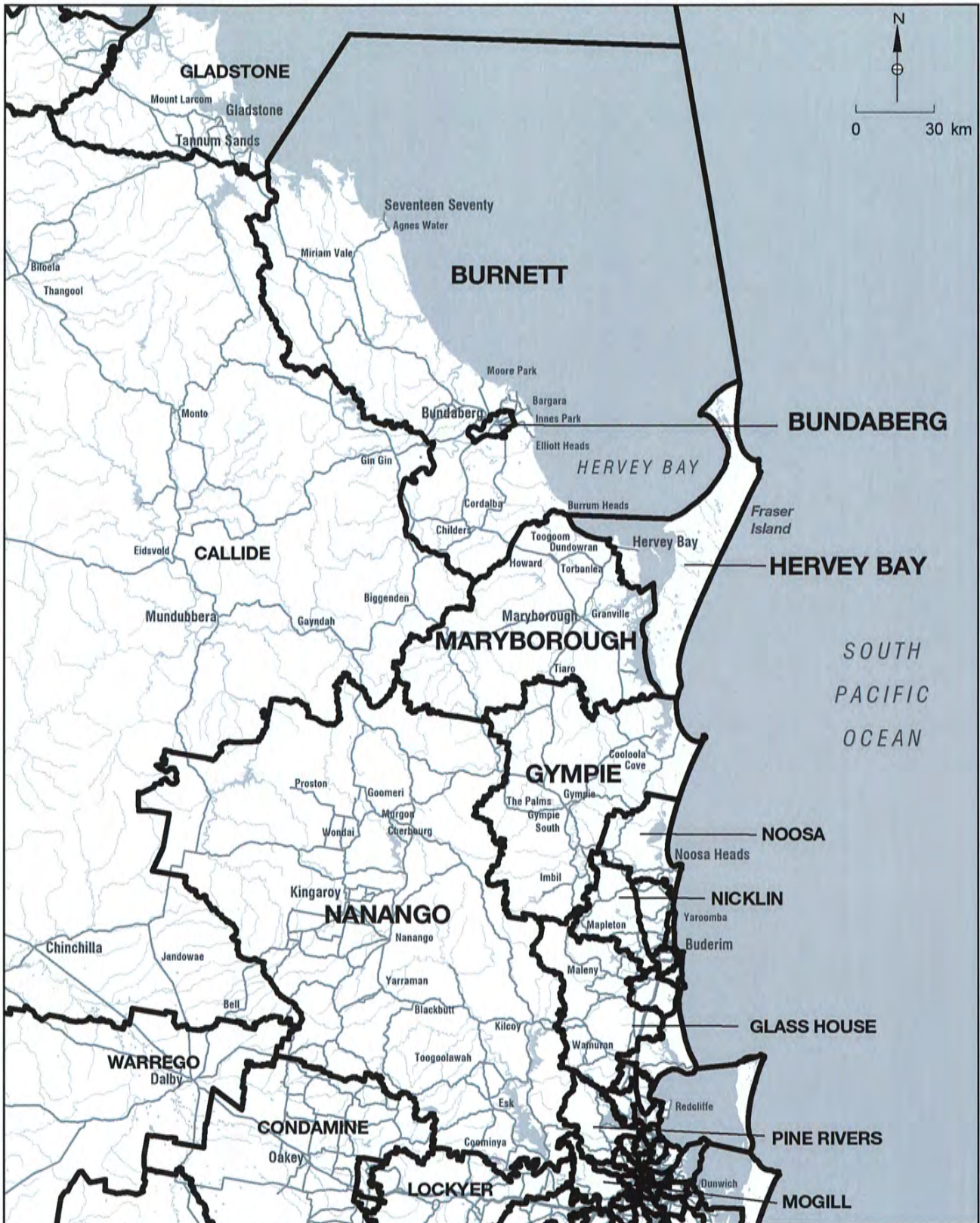
# QUEENSLAND ELECTORAL BOUNDARIES 2017 SUNSHINE COAST AREA



© Electoral Commission Queensland 2017. © The State of Queensland (Department of Natural Resources and Mines) 2015.



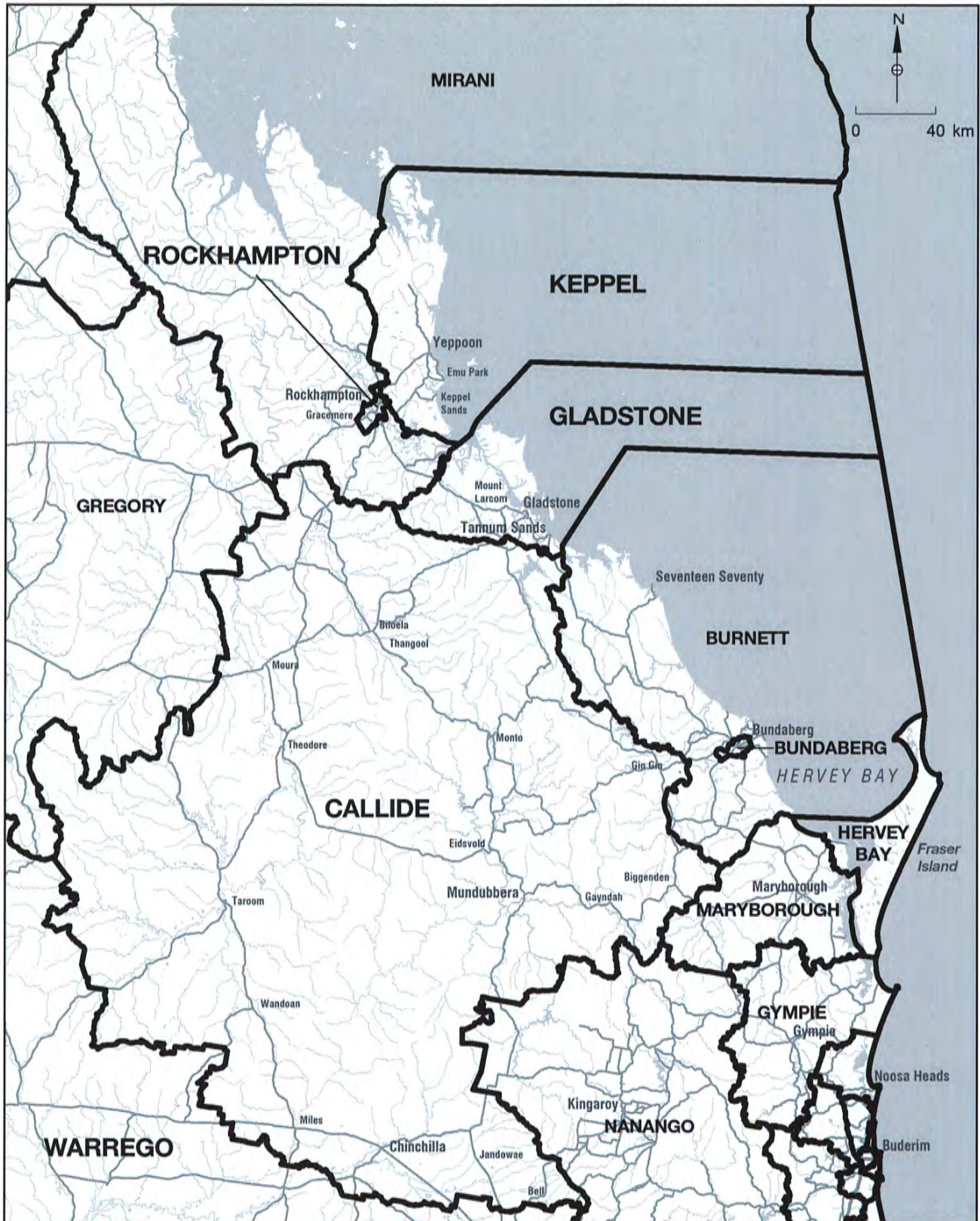
# QUEENSLAND ELECTORAL BOUNDARIES 2017 WIDE BAY and BURNETT AREA



© Electoral Commission Queensland 2017. © The State of Queensland (Department of Natural Resources and Mines) 2015.



# QUEENSLAND ELECTORAL BOUNDARIES 2017 CENTRAL QUEENSLAND





# QUEENSLAND ELECTORAL BOUNDARIES 2017 NORTHERN QUEENSLAND



© Electoral Commission Queensland 2017. © The State of Queensland (Department of Natural Resources and Mines) 2015.