

SOIL SURVEY OF THE EASTERN DARLING DOWNS WARWICK AREA SOILS

SCALE 1 : 50 000



UNIVERSAL TRANSVERSE MERCATOR PROJECTION
GRID LINES ARE 2 000 METRE INTERVALS OF THE MAP GRID OF AUSTRALIA 1994 (MGA94), ZONE 56
GEOCENTRIC DATUM OF AUSTRALIA 1994 (GDA94)

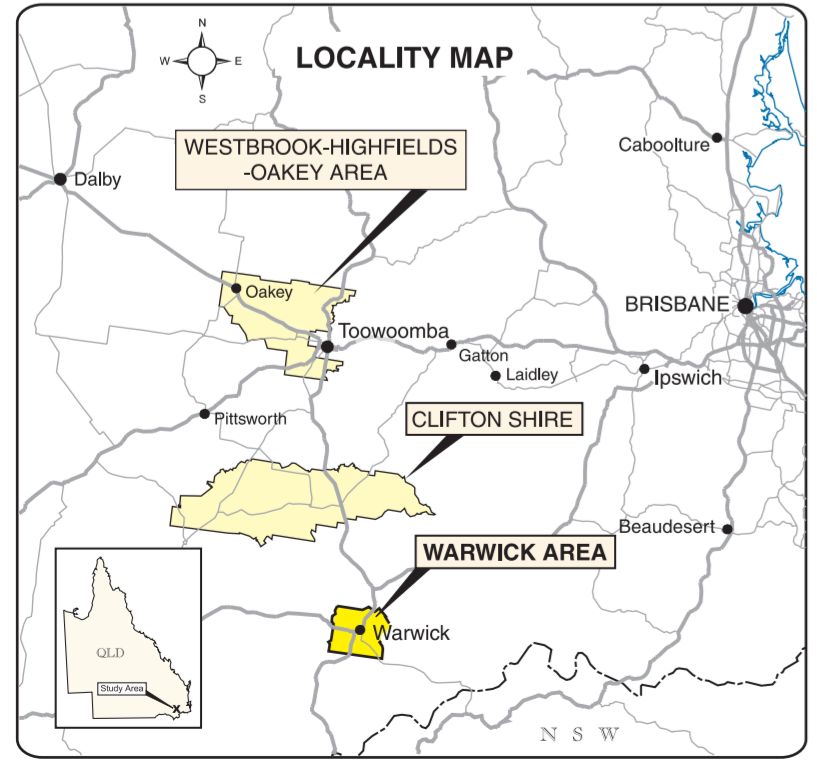
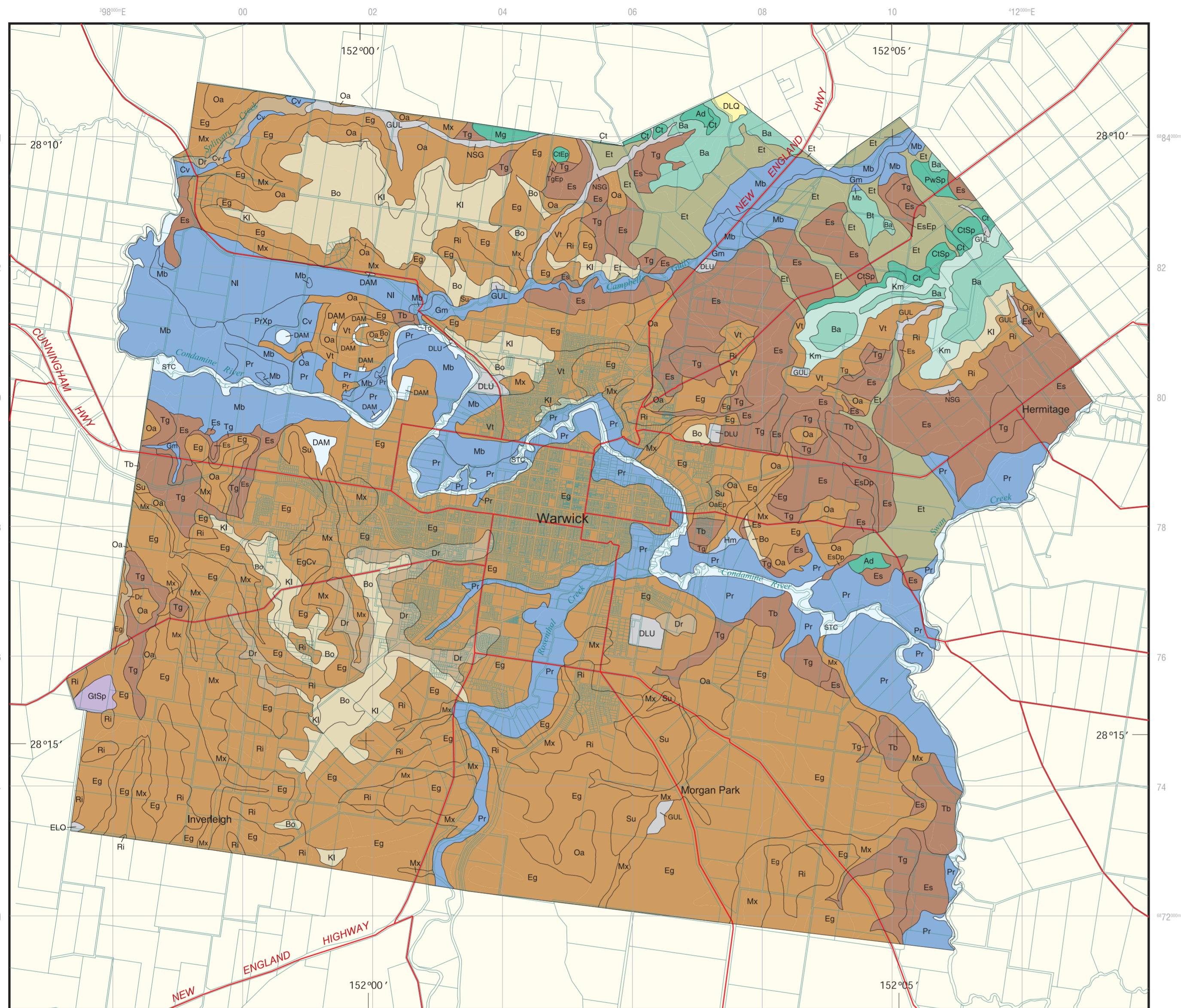
REFERENCE

Map unit	Major attributes of the dominant soil	Landform	Australian Soil Classification	Area (ha)
Coarse-grained sediments (Marburg Subgroup)				
Bo	Bony Very shallow, acid to neutral, brown, sandy loam to sandy clay loam.	Hillslopes and hillcrests of undulating plains and rises.	Leptic Tenosol; Brown Kandosol	564
Kl	Knoll Very shallow, acid to neutral, brown, stony sandy loam to sandy clay loam.	Hillslopes and hillcrests of undulating plains and rises.	Leptic Tenosol; Brown Kandosol	409
Dr	Drome Moderately deep to deep, acid, yellow to pale, loamy sand to light sandy clay loam.	Hillslopes of undulating plains and rises.	Orthic Tenosol	272
Su	Springburn Moderately deep to deep, texture contrast, with crusting surface and thick bleached A2 over sodic, neutral, mottled clay.	Hillslopes of undulating plains and rises.	Yellow or Grey Sodosol	169
Oa	Oak Shallow to moderately deep, texture contrast, with hardsetting surface and thin bleached A2 over sodic, neutral to alkaline, yellow-brown to brown clay.	Hillslopes of undulating plains and rises.	Brown Sodosol	741
Mx	Maxland Moderately deep to deep, texture contrast, with hardsetting surface and bleached A2 over sodic, alkaline, mottled clay.	Hillslopes of undulating plains and rises.	Yellow or Grey Sodosol	993
Eg	Ellangowan Moderately deep to deep, texture contrast, with hardsetting surface and bleached A2 over sodic, alkaline, mottled clay.	Hillslopes of undulating plains and rises.	Yellow or Grey Sodosol	5120
Ri	Ridge Moderately deep, texture contrast, with hardsetting surface and thin bleached A2 over sodic, neutral to alkaline, red-brown to red clay.	Hillslopes of undulating plains and rises.	Red or Brown Sodosol; Red or Brown Chromosol	858
Vt	Victoria Moderately deep to deep, sandy clay loam grading into neutral to alkaline, yellow to yellow-brown clay.	Hillslopes of undulating plains.	Yellow Dermosol	356
Fine-grained sediments (Walloon Coal Measures)				
Tb	Tootburra Moderately deep to deep, red-brown to red, alkaline clay.	Hillslopes of undulating plains and rises.	Red Dermosol	171
Tg	Talgai Moderately deep to deep, dark clay over mottled yellow-brown, sodic alkaline clay.	Hillslopes of undulating plains and rises.	Brown Dermosol	591
Es	Elphinstone Moderately deep to deep, dark, fine self-mulching clay over mottled pale, sodic alkaline clay.	Hillslopes of gently undulating to undulating plains and rises.	Grey Vertosol	1500
Basaltic uplands				
Km	Kenmuir Very shallow, rocky, acid to neutral, brown to red-brown, loam to clay loam.	Hillslopes and crests of undulating rises and low hills.	Red or Brown Dermosol	137
Ba	Beauraba Very shallow, rocky, neutral to alkaline, cracking, black clay.	Hillslopes and crests of undulating rises and low hills.	Black Dermosol	262
Bt	Burton Moderately deep to deep, neutral, red clay over tephra or red material.	Hillslopes of level to gently undulating plains.	Red Ferrosol	25
Ct	Charlton Moderately deep, alkaline, black, medium to coarse structured, cracking clay.	Hillslopes of undulating plains and rises.	Black Vertosol	82
Pw	Purrawunda Moderately deep, alkaline, black, fine to medium structured, cracking clay.	Hillslopes of undulating plains and rises.	Black Vertosol	20
Ad	Aberdeen Deep to very deep, alkaline, red-brown to red, cracking clay.	Footslopes and hillslopes of gently undulating plains and rises.	Red or Brown Vertosol	22
Mg	Murlaggan Deep, alkaline, black, medium to coarse structured, cracking clay deposited over sandstone.	Footslopes and hillslopes of gently undulating plains and rises.	Black Vertosol	17
Traprock (Metamorphic rocks)				
Gt	Gientanna Moderately deep, gradational, structured, neutral to alkaline brown soils.	Hillslopes of undulating rises.	Brown Dermosol	26
Mixed basalt and fine-grained sediment colluvia				
Et	Ellinthorpe Deep to very deep, neutral to alkaline, black cracking clays.	Footslopes and hillslopes of undulating plains and rises.	Black Vertosol	630
Mixed alluvia				
Hm	Haslemere Deep to very deep, hardsetting, texture contrast, with acid, dark, sandy clay loam over alkaline, dark grey to dark brown clay.	Relict alluvial plains.	Brown Sodosol	7
Cv	Cecilvale Deep to very deep, sodic, alkaline, dark grey clay with a thin, lighter textured, acid to neutral, crust.	Ox-bows, drainage depressions and backplains.	Grey Vertosol	52
Gm	Glenmore Deep to very deep, sodic, alkaline, black cracking clay.	Alluvial fans and plains.	Black Vertosol	130
Mb	Mywybilga Deep to very deep, alkaline, coarse structured, black, cracking clay.	Ox-bows, drainage depressions and backplains.	Black Vertosol	665
Pr	Pratten Deep to very deep, sodic, alkaline, black cracking clay.	Levees, terraces and plains.	Black Vertosol	1202
Nl	Norillee Deep to very deep, alkaline, medium structured, black, cracking clay.	Alluvial fans and plains.	Black Vertosol	290

Miscellaneous units	Area (ha)
DAM	33
DLO	13
DLU	51
ELO	2
GUL	61
NSG	49
STC	311

Soil Phase and Variant symbols	
Dp	Depositional Phase
Ep	Eroded Phase
Sp	Shallow Phase
Xp	Salty Phase
Cv	Coarse Variant

Notes: • Soils are listed from lightest to heaviest texture and/or from shallowest to deepest.
• Map shows dominant soil only.



INTENSITY STATEMENT

This is a medium intensity soil survey consisting of ground observations and aerial photograph interpretation. Its purpose is to provide information for regional planning and catchment management and to identify agricultural and pasture production areas. For intensive land use at the property scale, more detailed examinations should be carried out prior to development.

SURVEY by A.J.W. Biggs and I. R. Hall, Department of Natural Resources and Mines and P.R. Erwood, formerly of the Department of Natural Resources.

CARTOGRAPHY by Sheryl F. Crofts, Natural Resource Information Management, Department of Natural Resources and Mines, Indooroopilly, Brisbane.

BASE MAP Digital Cadastral Data Base, Department of Natural Resources and Mines, 2001

This map was produced as part of a Queensland Government and National Heritage Trust (NHT) funded project.

© The State of Queensland, Department of Natural Resources and Mines, 2001

DISCLAIMER

While every care is taken to ensure the accuracy of this product, the Department of Natural Resources and Mines makes no representation or warranties about its accuracy, reliability, completeness or suitability for any particular purpose and disclaims all responsibility and liability (including without limitation, liability in negligence) for all expenses, losses, damages (including indirect or consequential damage) and costs which you might incur as a result of the product being inaccurate or incomplete in any way for and reason.