

SOILS OF THE MOSSMAN - CAPE TRIBULATION ARE, NORTH QUEENSLAND.

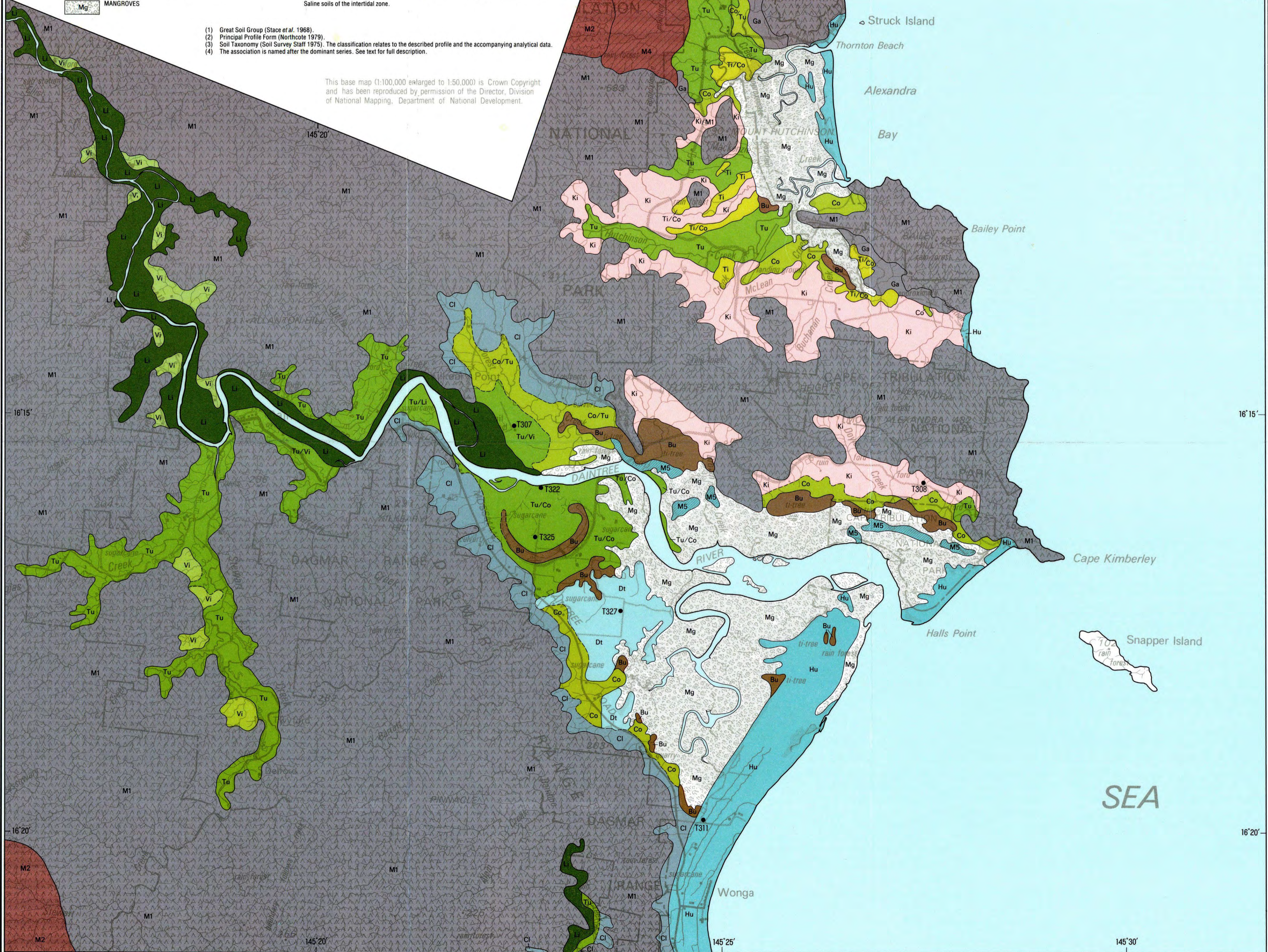
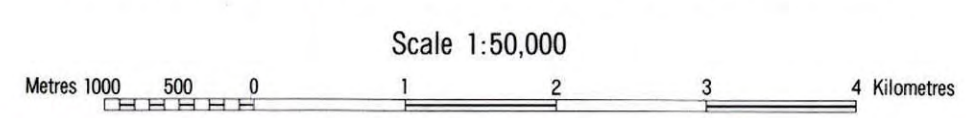
SIT A

MAP LEGEND

SOIL ASSOCIATION	G.S.G.(1)	P.P.F.(2)	S.T.(3)	MAJOR CHARACTERISTICS OF DOMINANT SOILS (4)
Hu HULL	(Rudimentary) Podzol	Uc5.11/p	Haplorthod	Pale A1 horizon; weakly developed A2; brown or pale B horizon; coarse sand throughout.
Br BROSMAN	Red Earth	Um5.52/p	Entic Haplumbrept	Dark grey brown sandy loam A1; yellowish red or red sandy loam to sandy clay loam massive B horizon.
Dt DAINTREE	Podzol	Uc2.2	Aquic Haplorthod	Uniform fine sand with dark grey or black A1; pale A2; mottled dark brown or black, grey brown and pale brown B horizon. Well developed podzols on low beach ridge remnants.
M5 MISCELLANEOUS UNIT				
Pg PIN GIN	Krasnozom	Gn3.11	Tropepic Haplorthox	Dark reddish brown clay loam A1 with strong cast structure; dark red massive or weak blocky B1 to about 40 cm depth; very strongly structured dark red medium clay B2 horizon; very deep soils.
Ki KIMBERLEY	Krasnozom	Gn3.11	Typic Eutropept	Dark reddish brown clay loam A1 with strong cast structure; strongly structured dark red medium clay B horizon; may be gravelly throughout.
Pe PERA	Red Clay	Ug5.37	Udic Chromustert	Dark brown light clay A1 with strong blocky structure; strongly structured red or brown heavy clay B horizon; 90 cm to basalt.
Ms MISSION	Red Earth	Gn2.1/p	Typic Haplorthox	Reddish brown clay loam Ap; red light clay or light medium clay massive B horizon; usually grades to structured red medium clay with much transported weathered gravel.
Bi BICTON	Xanthozom	Gn3.74	Aquic Dystropept	Dark greyish brown clay loam A1; yellowish brown clay loam A2/B1; mottled yellowish brown yellow and light grey light to medium clay B horizon with strong fine blocky structure; 90-120 cm to weathered rock.
Ga GALMARA	Red Podzolic Soil	Gn3.14?		Dark greyish brown clay loam A1; brown clay loam massive B1; yellowish red or red light to medium clay blocky B horizon.
We WEATHERBY	Soloth	Dy3.41	Kanhaplustalf	Dark greyish brown clay loam A1; bleached clay loam A2; mottled brown and red medium to heavy clay B horizon; 50-100 cm to weathered rock.
Cl CLIFTON	?fallow Podzolic Soil	Gn2.94	Aeric Kandiaquilt	Dark grey fine sandy loam A1; bleached, massive sandy clay loam A2; mottled olive yellow and light grey, massive, light or light medium clay B horizon. Dominantly Galmara series with some Bicton series and possibly some Mission series on lower slopes.
M1 MOUNTAINOUS UNIT				
Th THORPE	Yellow Earth	Gn2.24		
M2 MOUNTAINOUS UNIT				
M4 MISCELLANEOUS UNIT				
Lj LIVERPOOL	No provision	Um	Oxic Dystropept	Dark brown fine sandy clay loam A1; dark yellowish brown sandy clay loam massive B horizon; from about 80 cm grades to dark yellowish brown fine sandy loam or fine sand.
Tu TULLY	No provision	Uf6.34	Oxic Dystropept	Dark greyish brown silty loam to silty clay loam A horizon; yellowish brown silty clay loam to light clay B horizon with moderate fine blocky structure; may grade to fine sandy sediments from about 90 cm.
Mm MOSSMAN	No provision	Uf6.34/p	Oxic Dystropept	Dark grey brown medium clay Ap to 30 cm; olive brown or brownish yellow, moderate to strong fine blocky structured medium clay B horizon.
Vi VIRGIL	Red Earth	Um	Oxic Dystropept	Dark greyish brown sandy clay loam A1; yellowish red massive sandy clay loam B horizon.
Po PONZO	?Soloth	Uf6.41/p	Aquatic Oxic Haplustalf	Brown or yellow brown light medium clay Ap; mottled yellow brown or brownish grey and red heavy clay B horizon with strong blocky structure.
So SOMERSET	No provision	Gn3.04	Udic Ustochrept	Dark grey clay loam A1; bleached greyish brown clay loam A2/A3; olive brown massive to weak blocky structured light medium clay B horizon.
Ru RUMULA	?Soloth	Dy3.41	Udic Aquic Ustochrept	Very dark grey clay loam A1; bleached clay loam A2; mottled yellowish brown, light grey, and red medium clay B horizon with strong prismatic structure.
Gi GARIOCH	?Solodlic Soil	Dy3.43		Dark grey brown fine sandy loam massive A1; strongly bleached sandy clay loam A2; mottled brown and light brownish grey medium clay B horizon.
Co COOM	Gleyed Podzolic Soil	Gn3.94	Typic Tropepept	Dark grey clay loam A1; mottled light grey and brownish yellow medium clay, moderate medium blocky structured B horizon.
Ti TIMARA	Humic Gley	Gn3.91		Dark greyish brown clay loam or light clay A horizon; grey and brownish yellow light to medium clay coarse blocky structured B horizon.
Ni NEWELL	?Humic Gley	Dy5.21/p	Aquic Kandiumult	Black, massive organic loam Ap/A1 to 50 cm; mottled yellowish brown, pale brown, and red, blocky structured medium to heavy clay B horizon.
Ho HOLLOWAY	Soloth	Dy3.41		Dark greyish brown massive loam A1; strongly bleached silty clay loam A2; mottled grey and brown coarse blocky structured heavy clay B horizon.
Bu BULGURU	Humic Gley	Dy5.41		Organic surface 20-50 cm thick over mottled, gleyed sediments ranging from heavy clay to coarse sand. Saline soils of the intertidal zone.
Mg MANGROVES				

- (1) Great Soil Group (Stace et al. 1968).
- (2) Principal Profile Form (Northcote 1979).
- (3) Soil Taxonomy (Soil Survey Staff 1975). The classification relates to the described profile and the accompanying analytical data.
- (4) The association is named after the dominant series. See text for full description.

This base map (1:100,000 enlarged to 1:50,000) is Crown Copyright and has been reproduced by permission of the Director, Division of National Mapping, Department of National Development.



This map is a scanned image and some detail may be illegible or lost. All rights are reserved and no part of this publication covered by copyright may be reproduced or copied in any form or by any means except with the written permission of CSIRO Division of Land and Water. To the extent permitted by law, CSIRO excludes all liability to any person or organisation for expenses, losses, liability and costs arising directly or indirectly from using this publication (in whole or in part) and any information or material contained in it. The publication must not be used as a means of endorsement without the prior written consent of CSIRO.