

# NOTICE TO MARINERS



## 167 (T) of 2025

---

Issued by Gladstone Maritime Region on 28 April 2025

**Area:** Gladstone pilotage area  
**Locality:** North and east of North Entrance  
**Activity:** Survey operations using uncrewed surface vessels

Mariners are advised that:

Offshore survey operations using remotely piloted Uncrewed Surface Vessels (USVs), will be undertaken within the area shown on the attached chartlet between Wednesday, 23 April 2025 and Wednesday, 7 May 2025. The USVs will be engaged in survey activities as part of a local geography survey.

The USV superstructure is painted yellow, has an active radar reflector installed, is fitted with navigational lights, sound signal, VHF and AIS.

Mariners are to avoid contact with the vessel and be aware of the operational area during this period.

The support vessel 'Toanui' will escort the USVs in and out of the launch location in the Gladstone Harbour and monitor the USVs during their deployment.

Four buoys will be deployed within the operational area: a primary tide gauge buoy, secondary tide gauge buoy, GNSS tide buoy and a Feature Detection Cube attached to a buoy. The buoys will be fitted with a yellow flashing light with a flash rate of two seconds. An operational area chart is attached to this notice.

**Refer to notice:** 150(T) of 2025

**Cancel notice:** 150(T) of 2025

**AUS charts affected:** AUS820

**ENC Cells affected:** AU5PCL01

---

Latitude and longitude positions are on WGS84 horizontal datum and are compatible with GDA2020 datum.

**For further information about this notice, please contact:**

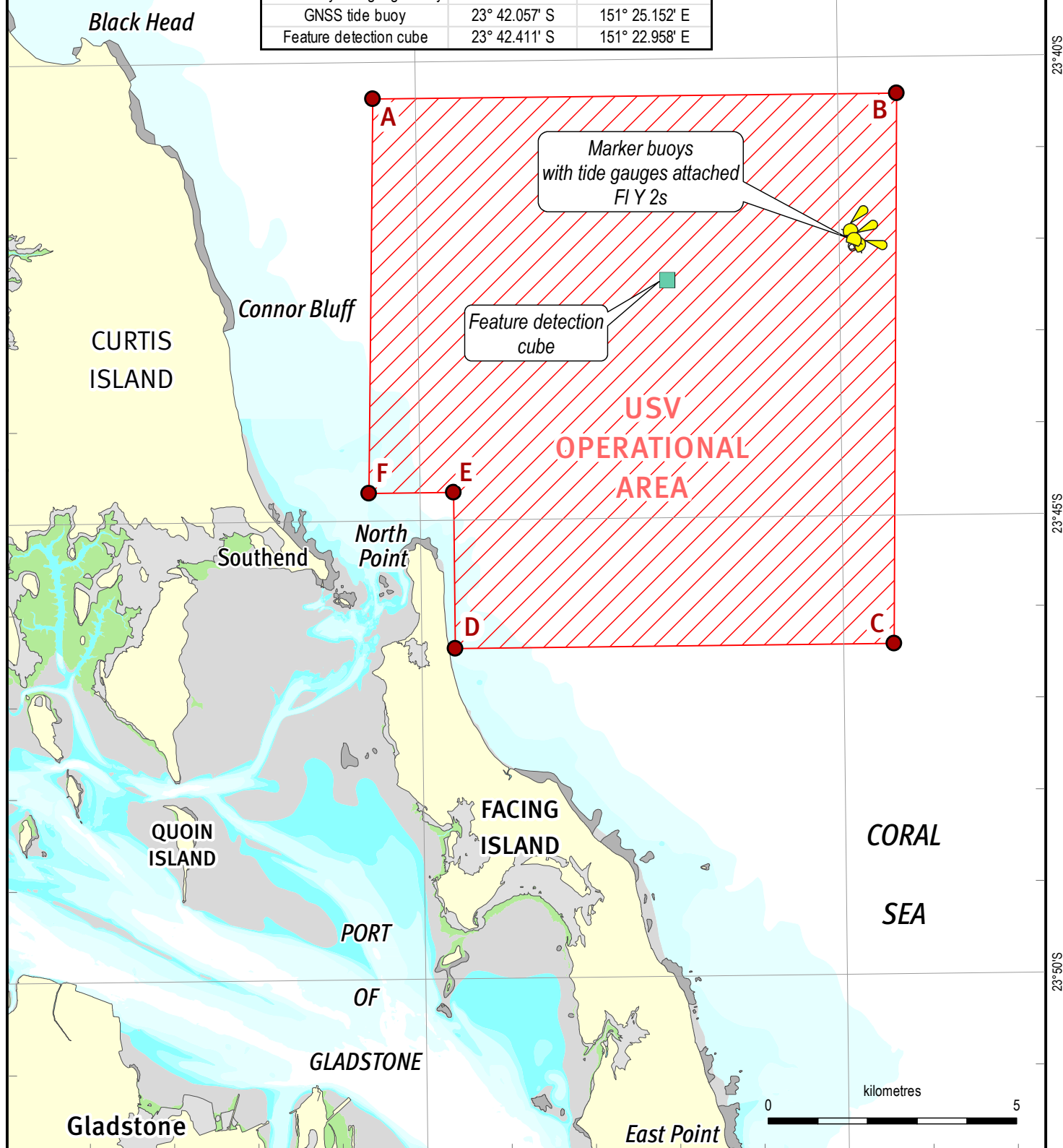
The Gladstone Regional Harbour Master's office:

Phone 07 4839 0208

Email: [vtsgladstone@msq.qld.gov.au](mailto:vtsgladstone@msq.qld.gov.au)

**Notice authorised by:** Regional Harbour Master (Gladstone) - Maritime Safety Queensland

| Block corner              | Latitude (DDM) | Longitude (DDM) |
|---------------------------|----------------|-----------------|
| A                         | 23° 40.400' S  | 151° 19.500' E  |
| B                         | 23° 40.400' S  | 151° 25.700' E  |
| C                         | 23° 46.400' S  | 151° 25.600' E  |
| D                         | 23° 46.400' S  | 151° 20.400' E  |
| E                         | 23° 44.700' S  | 151° 20.400' E  |
| F                         | 23° 44.700' S  | 151° 19.400' E  |
| Primary tide gauge buoy   | 23° 41.962' S  | 151° 25.139' E  |
| Secondary tide gauge buoy | 23° 42.078' S  | 151° 25.166' E  |
| GNSS tide buoy            | 23° 42.057' S  | 151° 25.152' E  |
| Feature detection cube    | 23° 42.411' S  | 151° 22.958' E  |



To be used with appropriate NTM  
 © The State of Queensland 2025  
 Transport and Main Roads



Prepared 28 April 2025  
 Maritime Safety Queensland  
 Port Operations and VTS - Spatial Services

## QUEENSLAND NOTICE TO MARINERS

Issued by Maritime Safety Queensland

**USV offshore survey area**  
**North-east of Facing Island**  
**23 April - 7 May 2025**

QNTM updates also available  
 from [www.msq.qld.gov.au](http://www.msq.qld.gov.au)  
 Datum: GDA2020 horizontal. LAT vertical  
 Map projection: UTM (MGA zone 56)

**Map S11-725-1**



**Queensland**  
 Government