

# 2019 Gender Equality Report Cards — in brief

**Overall**

Female Queenslanders make up **50.5%** of our state population and **20.1%** of Australia's total female population.<sup>1</sup>

Around **one in five** females (22.1%) **is born overseas.**<sup>2</sup>

**Aboriginal and Torres Strait Islander females** make up about **4%** of total female population.<sup>3</sup>

**Life expectancy** at birth in 2016–2018 for all Queenslanders.<sup>4</sup>

80.2 years	84.7 years
Male	Female

**Life expectancy** at birth in 2015–2017 for Aboriginal and Torres Strait Islander Queenslanders.<sup>5</sup>

76.4 years	72 years
Female	Male

About **one-third (31.5%)** of females aged **65 years and older live alone** compared with **18.4%** of males in the same age group.<sup>6</sup>

**Participation and leadership**

All employed persons consist of<sup>7</sup>

**Females continue to over-represent clerical and administrative workers, but under-represent other occupations.**<sup>8</sup>

Technicians and trades workers	14.7%	85.3%
Machinery operators and drivers	10.1%	89.9%
Clerical and administrative workers	77.1%	22.9%

Accessing part time work arrangements to care for children<sup>10</sup>

**Working mothers 30.8%**

**Working fathers 3.8%**

**36.9%** of all **serving judges and magistrates**, including the Chief Justice of Queensland are **female.**<sup>11</sup>

**22.2%** of **chief executives and managing directors** are female.<sup>12</sup>

**Economic security**

Females comprise **60%** of **commencements** and **60.5%** of **completions** of higher education award courses.<sup>13</sup>

In **every age group** on average **females have lower superannuation balances**, with those aged 70 years and over showing the largest gap.<sup>14</sup>

**\$279,463** vs **\$404,490**

**Females** account for **56.7%** of people accessing government-funded specialist **homelessness services.**<sup>15</sup>

Females comprise **56.5%** of all **public rental tenants** and **56.7%** of all **state-owned and managed Indigenous housing tenants.**<sup>16</sup>

**Gender pay gap** on average in a full-time working week.<sup>17</sup>

**15.8%**

**\$1,441.60** vs **\$1,712.50**

**Safety**

**32.6%** females and **69.6%** males **feel safe or very safe walking alone** in their local area after dark.<sup>18</sup>

Females are over **three times** **more likely than males to be killed by a partner.**<sup>19</sup>

**85.3%** of **victims of sexual assault** are females.<sup>20</sup>

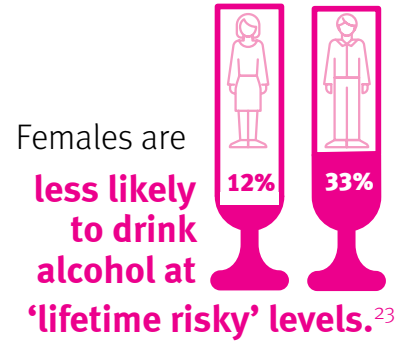
**69.4%** of all alleged **victims of elder abuse.**<sup>21</sup>

**Elder Abuse Helpline**

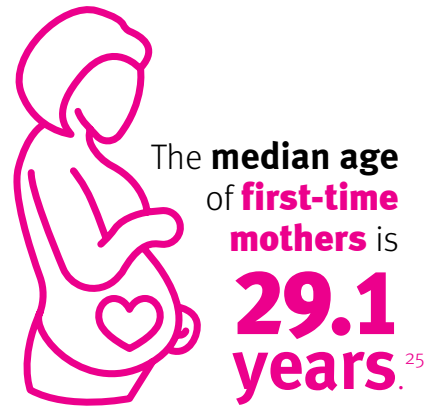
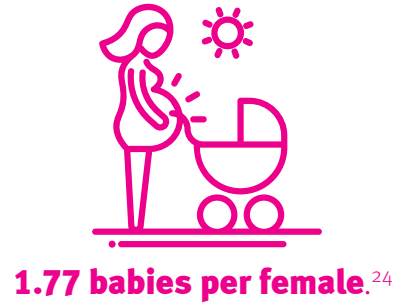
Females account for **74.7%** of all Queensland clients seeking government-funded **specialist homelessness services, due to domestic and family violence** as a main reason.<sup>22</sup>

# 2019 Gender Equality Report Cards — in brief

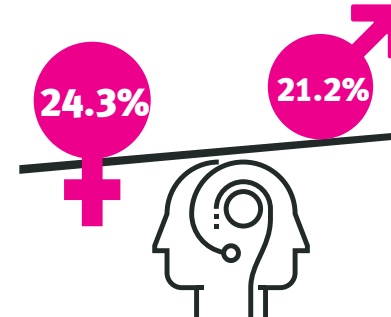
## Health and wellbeing



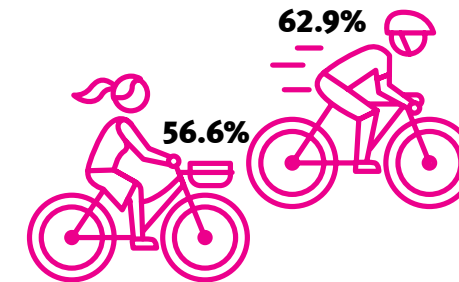
Females have **an average of just under two children** during their reproductive life at the **fertility rate** of



**Mental and behavioural health problems.**<sup>26</sup>



Females are **less likely to be sufficiently active** for health benefits.<sup>27</sup>

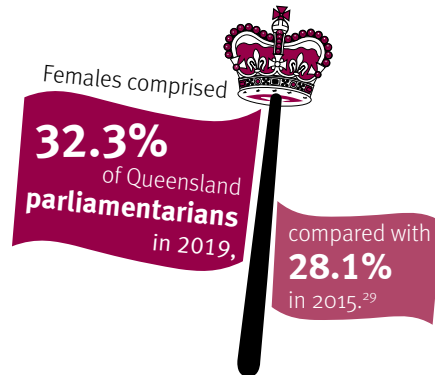


Girls aged 5–17 years are **less likely to be active daily.**<sup>28</sup>

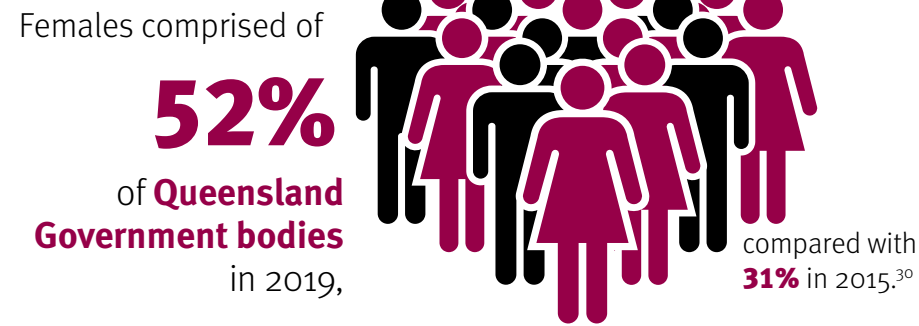


## Some comparisons

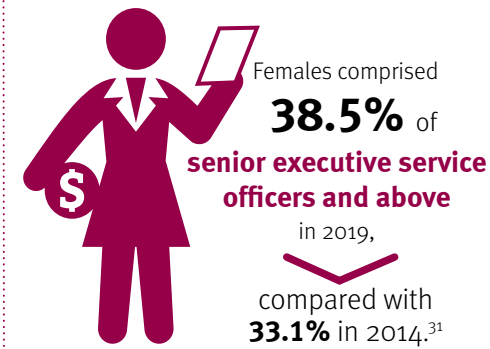
### Queensland Parliament



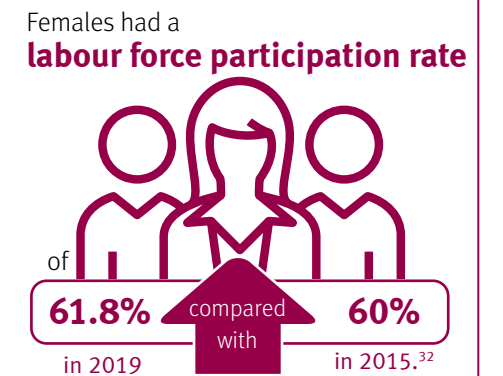
### Queensland Government bodies



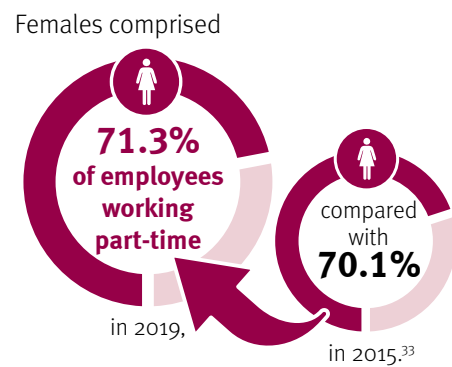
### Queensland public sector



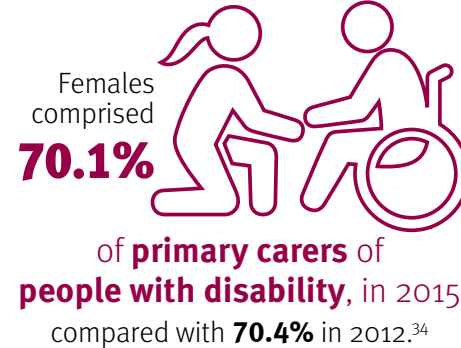
### Labour force



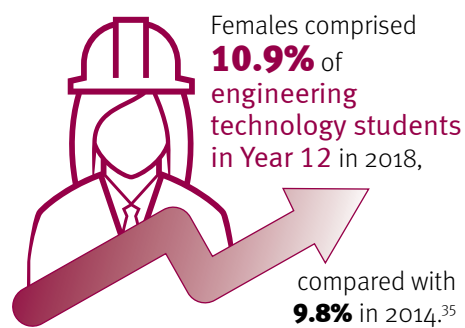
### Employees working part-time



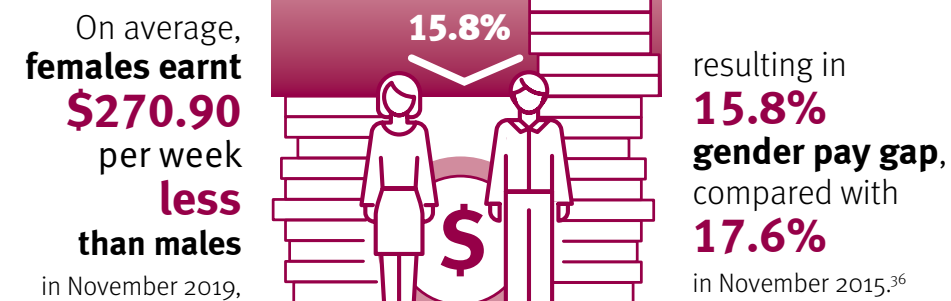
### Primary carers of people with disability



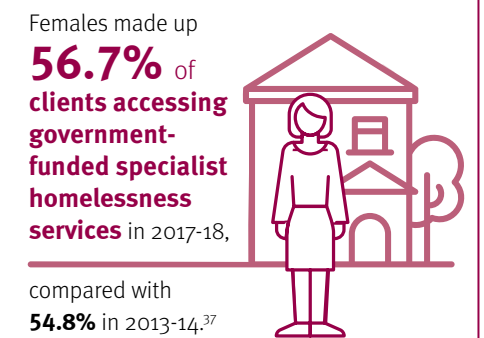
### Year 12 student's enrolments in engineering technology



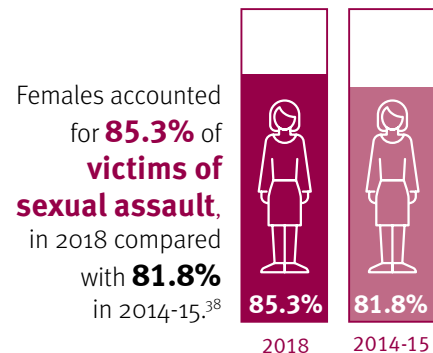
### Gender pay gap



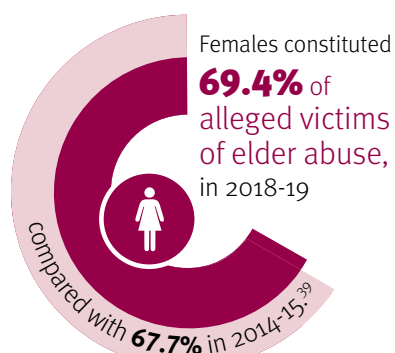
### Government-funded specialist homelessness services



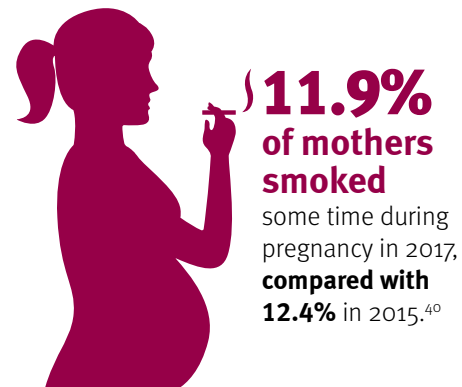
### Sexual assault



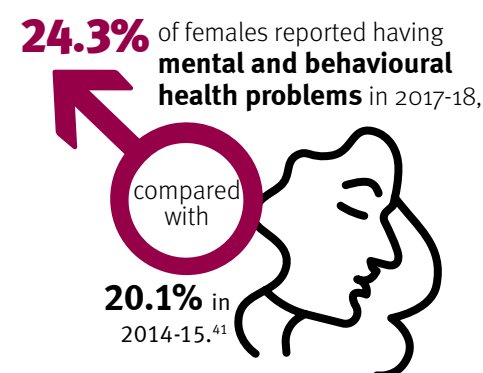
### Victims of elder abuse



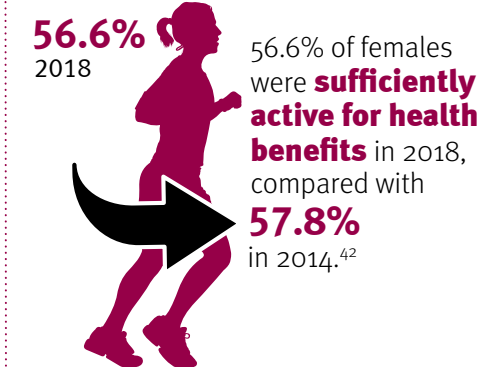
### Smoking during pregnancy



### Mental health problems



### Physical activity



## References

For full details of the references, contact the Office for Women ([women@qld.gov.au](mailto:women@qld.gov.au))

1. Australian Bureau of Statistics, 2019, *Australian demographic statistics, Mar 2019*, cat. no. 3101.0.
2. Australian Bureau of Statistics, 2017, *2016 Census of Population and Housing*, cat. no. 2003.0.
3. Australian Bureau of Statistics, 2017, *2016 Census of Population and Housing*, cat. no. 2001.0.
4. Australian Bureau of Statistics, 2019, *Life tables, states, territories and Australia, 2016–2018*, cat. no. 3302.0.55.001.
5. Australian Bureau of Statistics, 2018, *Life tables for Aboriginal and Torres Strait Islander Australians, 2015–2017*, cat. no. 3302.0.55.003.
6. *ibid.*
7. Australian Bureau of Statistics, 2019, *Labour force, Australia, September 2019*, cat. no. 6202.0.
8. Australian Bureau of Statistics, 2019, *Labour force, Australia, detailed, quarterly, August 2019*, cat. no. 6291.0.55.003.
9. Australian Bureau of Statistics, 2017, *2016 Census of Population and Housing*, cat. no. 2001.0.
10. Australian Bureau of Statistics, 2018, *Childhood education and care, Australia, June 2017*, cat. no. 4402.0.
11. The Australasian Institute of Judicial Administration (AIJA), 2019, *AIJA Judicial gender statistics – judges and magistrates (% of women) March 2019*.
12. Australian Bureau of Statistics, 2019, *Labour force, Australia, detailed, quarterly, May 2019*, cat. no. 6291.0.55.003.
13. Australian Government Department of Education and Training, Higher Education Data Collections, uCube, extracted 1 August 2019.
14. Australian Bureau of Statistics, 2019, *Microdata: Income and Housing, 2017–18*, cat. no. 6541.0.30.001, data generated using ABS TableBuilder.
15. Australian Institute of Health and Welfare, 2019, *Specialist homelessness services 2017–18, Supplementary tables – Queensland*.
16. Queensland Department of Housing and Public Works, SAP R/3@31 August 2019, unpublished data.
17. Australian Bureau of Statistics, 2020, *Average weekly earnings, Australia, Nov 2019*, cat. no. 6302.0.
18. Australian Bureau of Statistics, 2017, *General social survey, summary results, Australia, 2014*, cat. no. 4159.0, customised data.
19. Queensland Courts, Queensland domestic and family homicide statistical overview, unpublished data.
20. Australian Bureau of Statistics, 2019, *Recorded crime – victims, Australia, 2018*, cat. no. 4510.0.
21. Elder Abuse Prevention Unit, 2019, *Year in review 2018–19*, unpublished data.
22. Australian Institute of Health and Welfare, 2019, *Specialist homelessness services 2017–18, Supplementary tables – Queensland*.
23. Queensland Health, 2018, *The health of Queenslanders 2018*. Report of the Chief Health Officer Queensland.
24. Australian Bureau of Statistics, 2018, *Births, Australia, 2017*, cat. no. 3301.0.
25. *ibid.*
26. Australian Bureau of Statistics, 2018, *National health survey: first results, 2017–18*, cat. no. 4364.0.55.001.
27. Queensland Health, 2018, *The health of Queenslanders 2018*. Report of the Chief Health Officer Queensland.
28. *ibid.*
29. Queensland Parliament, *Members – current members including Ministers and shadow Ministers*.
30. Queensland Government Department of Premier and Cabinet, *Register of Appointees to Queensland Government Boards*, unpublished data.
31. Queensland Government Public Service Commission, *Queensland public sector quarterly workforce profile*.
32. Australian Bureau of Statistics, *Labour force, Australia*, cat. no. 6202.0.
33. *ibid.*
34. Australian Bureau of Statistics, *Disability, ageing and carers, Australia*, cat. no. 4430.0.
35. Queensland Curriculum and Assessment Authority, *Subjects: Enrolments and levels of achievement*.
36. Australian Bureau of Statistics, *Average weekly earnings, Australia*, cat. no. 6302.0.
37. Australian Institute of Health and Welfare, *Specialist homelessness services, Supplementary tables – Queensland*.
38. Australian Bureau of Statistics, *Recorded crime – victims, Australia*, cat. no. 4510.0.
39. Elder Abuse Prevention Unit, *Year in review*, unpublished data.
40. Queensland Health, *Queensland perinatal statistics*.
41. Australian Bureau of Statistics, *National health survey*, cat. no. 4364.0.55.001.
42. Queensland Health, *The health of Queenslanders*. Report of the Chief Health Officer Queensland.

