

NOTICE TO MARINERS

173 of 2025

Issued by Townsville Maritime Region on 2 May 2025

Area: North Queensland

Locality: Abbot Point Pilotage area, Great Barrier Marine Park and Coral Sea

Activity: Space Launch – Safety exclusion area/debris hazard area - Amended

Mariners are advised that:

Bowen Orbital Spaceport is expected to commence Space vehicle launch operations from 14 May 2025. Prior to a launch, a safety exclusion area will be activated. Abbot Point VTS will broadcast when the safety exclusion area is activated and again to cancel the safety exclusion area via VHF Channels 12 and 16.

Mariners are advised that a person must not anchor, berth, moor or operate a ship (other than a ship owned and/or operated by the entities listed in Schedule B) within the safety exclusion area as described in Schedule A below:

Schedule A

Part of the waters of Abbot Point Pilotage Area bound by the coordinates below.

Launch Hazard Area	Latitude	Longitude	Launch dates and timings will be announced on www.gspace.com/missions Broadcasts on VHF Channel 12 and 16
	19° 55.099'S	148° 05.671'E	
	19° 51.012'S	148° 13.735'E	
	19° 54.579'S	148° 20.258'E	
	19° 57.646'S	148° 13.417'E	
Abbot Point Pilotage waters	and back to the point of commencement		

And as shown on the map ***S11-714-2 Space Launch - Debris Hazard Zone***

Schedule B

(a) Queensland Police Service

(b) Department of Transport and Main Roads, Maritime Safety Queensland

(c) A ship authorised by Queensland Police Service and/or Maritime Safety Queensland to assist with the monitoring and management of the safety exclusion area.

For the waters described in Schedule A above, the safety exclusion area shall commence one (1) hour prior to any space launch and remain active until 30 minutes after the space launch is completed (or as varied due to continuing hazards in the safety exclusion area).

If a programmed space launch is cancelled, the safety exclusion area for that launch will be rescinded.

Mariners are also advised that the space launch debris hazard extends beyond the safety exclusion area across areas that form part of the waters of Australian Territorial Sea, Great Barrier Reef Marine Park (GBRMP) and the Coral Sea as described below

Space Launch Hazard Area	Waters bound by the coordinates below		Launch dates and timings will be announced on www.gspace.com/missions
	Latitude	Longitude	
	19° 51.012'S	148° 13.735'E	

Australian Territorial Sea, GBRMP Waters	19° 28.369'S	148° 58.095'E	Broadcasts on VHF Channel 11, 14 and 16 (subject to VHF range)
	19° 29.295'S	149° 00.357'E	
	19° 38.762'S	148° 55.321'E	
	19° 54.579'S	148° 13.417'E	
	and back to the point of commencement		

Space Launch Hazard Area Coral Sea	Waters bound by the coordinates below		Launch dates and timings will be announced on www.gspace.com/missions
	Latitude	Longitude	
	19° 20.970'S	149° 14.701'E	
	18° 42.215'S	150° 20.701'E	Broadcasts on VHF Channel 11, 14 and 16 (subject to VHF range)
	18° 44.272'S	150° 28.931'E	
	18° 51.667'S	150° 25.371'E	
	19° 23.527'S	149° 16.703'E	
	and back to the point of commencement		

And as shown on the map ***S11-714 -2 Space Launch - Debris Hazard Zone.***

For the waters described above as “Australian Territorial Sea, GBRMP and Coral Sea Space Launch Hazard Area”, the hazard area will commence one hour prior to the launch and shall remain active until 2 hours after the rocket launch is completed (or as varied due to continuing hazards in the safety hazard area).

If a programmed space launch is cancelled, the safety exclusion area for that launch will be rescinded.

Mariners are advised that during a launch debris may fall within the safety exclusion area and the Space Launch - Hazard Area

Launch information will be broadcast on VHF channel 16, 12, 11 and 14 as follows

Launch – 6 hours. Initial alert, safety exclusion area active, launch scheduled, vessels advised to clear the area.

Launch – 1 hour. Warning - safety exclusion area active, launch imminent in 1 hour, vessels advised clear the hazard area.

Launch – Count down commenced. Warning - safety exclusion area active - launch imminent.

Launch – completed – All Clear - safety exclusion area deactivated.

Launch information and updates will be provided at [Missions | Gilmour Space \(gspace.com\)](http://Missions | Gilmour Space (gspace.com))

Gilmour Space Launch Information is available on telephone **+61 7 56189043**

Mariners are advised to remain clear of an active safety exclusion area and to navigate with extreme caution.

Refer to notice: 064 of 2025

Cancel notice: 064 of 2025

AUS charts affected: AUS 255, AUS 826, AUS 4060

ENC Cells affected: AU5ABP01, AU320148, AU320149

Latitude and longitude positions are on WGS84 horizontal datum and are compatible with GDA2020 datum.

For further information about this notice, please contact:






The Townsville Regional Harbour Master's office:

Phone 07 4421 8100

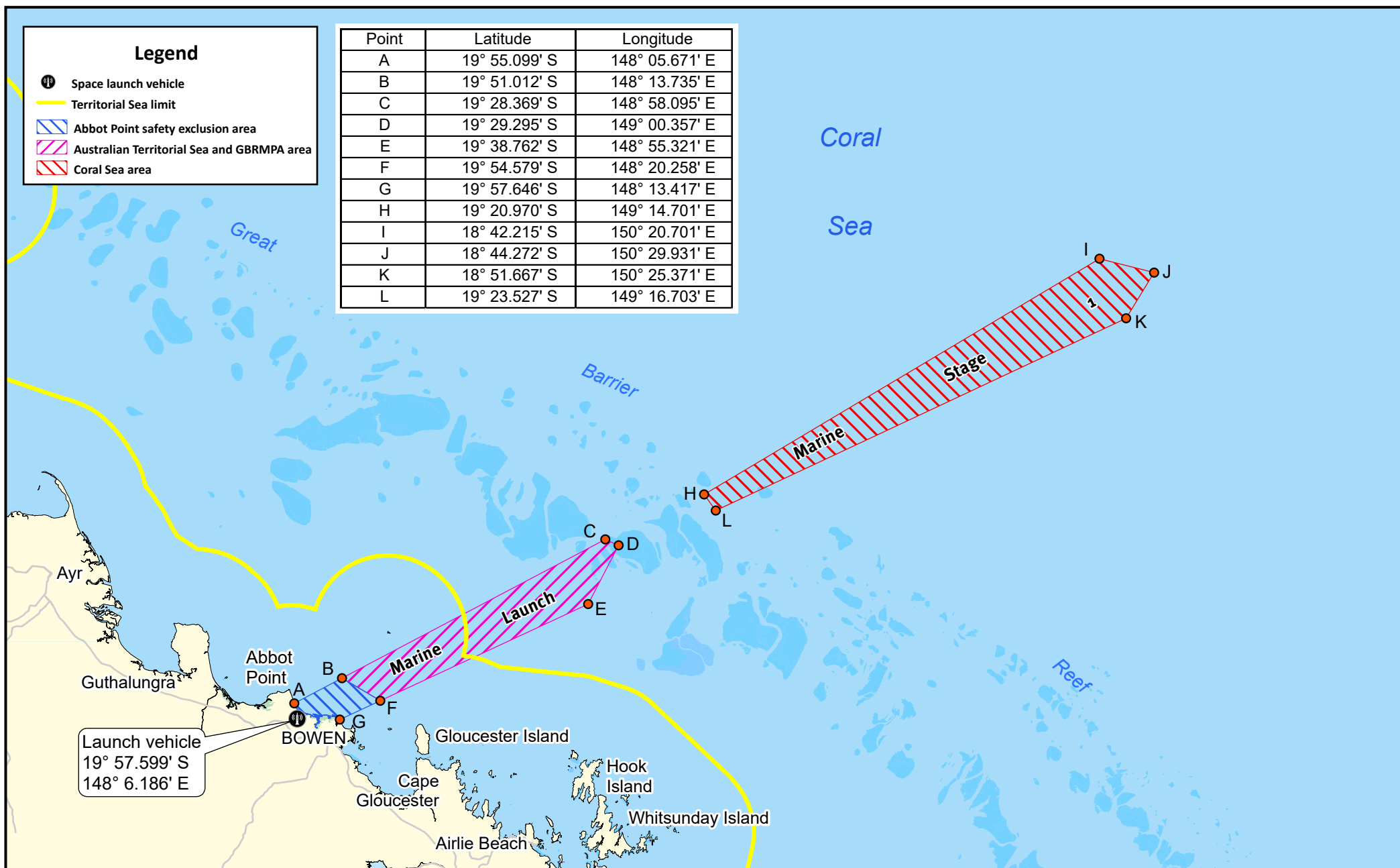
Email: vtstowns@msq.qld.gov.au

Notice authorised by: Regional Harbour Master (Townsville) - Maritime Safety Queensland

Legend

-  Space launch vehicle
-  Territorial Sea limit
-  Abbot Point safety exclusion area
-  Australian Territorial Sea and GBRMPA area
-  Coral Sea area

Point	Latitude	Longitude
A	19° 55.099' S	148° 05.671' E
B	19° 51.012' S	148° 13.735' E
C	19° 28.369' S	148° 58.095' E
D	19° 29.295' S	149° 00.357' E
E	19° 38.762' S	148° 55.321' E
F	19° 54.579' S	148° 20.258' E
G	19° 57.646' S	148° 13.417' E
H	19° 20.970' S	149° 14.701' E
I	18° 42.215' S	150° 20.701' E
J	18° 44.272' S	150° 29.931' E
K	18° 51.667' S	150° 25.371' E
L	19° 23.527' S	149° 16.703' E



Map S11-714-2

Map Datum: GDA2020
Projection: UTM (MGA Zone 55)

Prepared 15 April 2025
Maritime Safety Queensland
Port Operations and VTS - Spatial Services

Navigation constraints issued by Regional Harbour Master (Townsville)

SPACE LAUNCH - DEBRIS HAZARD ZONE ABBOT POINT

© The State of Queensland 2025
Transport and Main Roads

