

NOTICE TO MARINERS

179 (T) of 2025

Issued by Townsville Maritime Region on 7 May 2025

Area: Abbot Point and Bowen pilotage areas

Locality: Abbot Point Pilotage area

Activity: Space Launch – Safety exclusion area

Mariners are advised that:

Bowen Orbital Spaceport, Space vehicle launch has been scheduled for Thursday, 15 May 2025.
Due to the nature of the endeavour, the specified launch window is from 0700hours to 1700 hours.

The actual time of the launch and the commencement of an active exclusion area will be broadcast on VHF channel 16, 12, 11 as follows

Launch – 6 hours. Initial alert, launch planned in 6 hours, safety exclusion area will be active in 5 hours.

Launch – 1 hour. Warning - safety exclusion area active, launch imminent in 1 hour, vessels must clear the area.

Launch – Count down commenced. Warning - safety exclusion area active - launch imminent, all vessels to remain clear of the safety exclusion area and space launch debris hazard area.

Launch + 30 minutes – All Clear - safety exclusion area deactivated.

In the event the launch does not proceed as scheduled on Thursday 15 May 2025, a launch attempt will be made each day between 0700 hours to 1700 hours until Monday 19 May 2025.

Launch information and updates will be provided at [Missions | Gilmour Space \(gspace.com\)](https://missions.gilmourspace.com)

Launch Information Recorded line **+61 7 56189043**

Launch Information will be broadcast on VHF channel 16, 11 and 12

Mariners are advised to remain clear of an active safety exclusion area, the space launch debris hazard area and to navigate with extreme caution.

Refer to notice: 173 of 2025

Cancel notice:

AUS charts affected: AUS 255, AUS 826, AUS 4060

ENC Cells affected: AU5ABP01, AU320148, AU320149

Latitude and longitude positions are on WGS84 horizontal datum and are compatible with GDA2020 datum.

For further information about this notice, please contact:






The Townsville Regional Harbour Master's office:

Phone 07 4421 8100

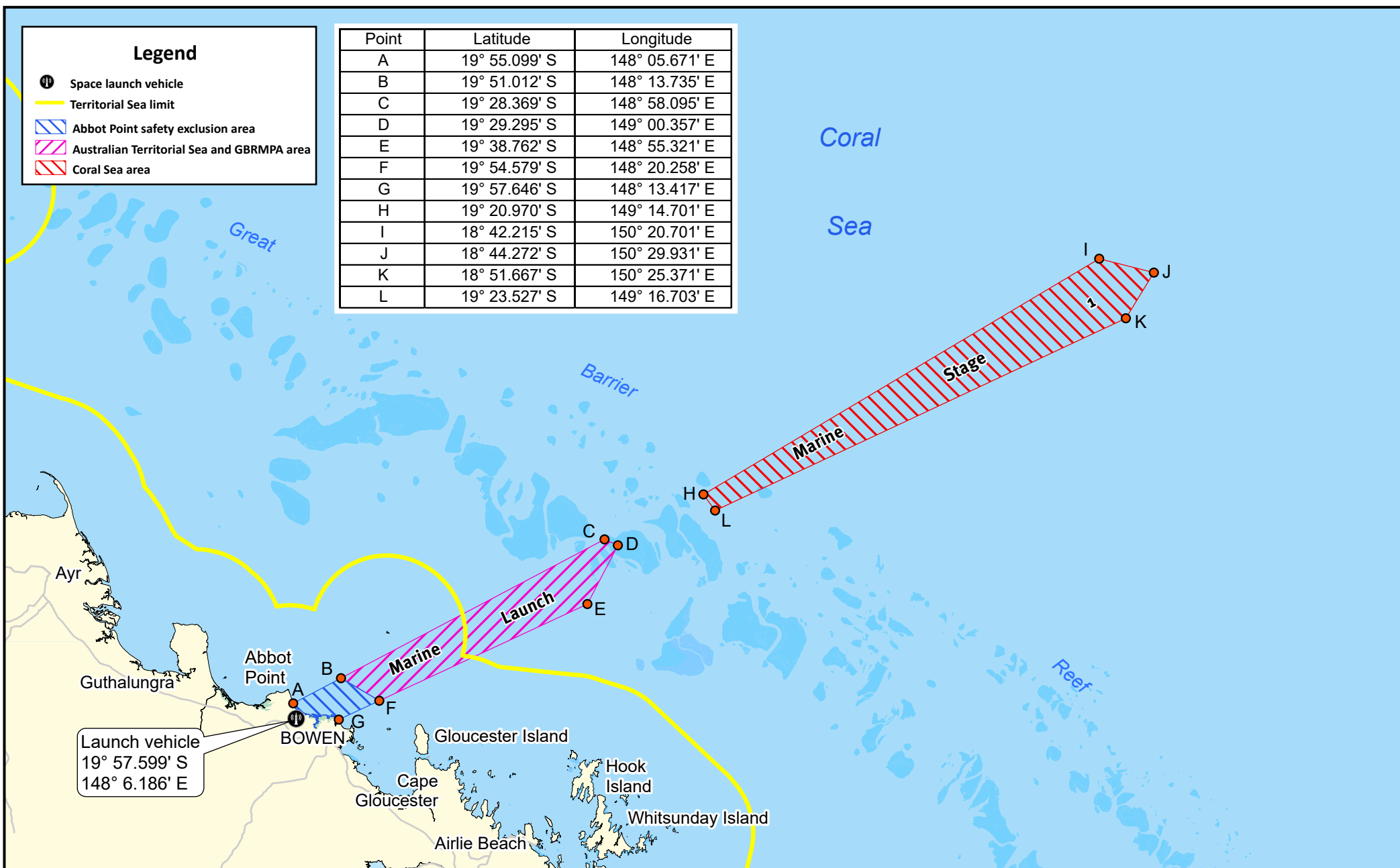
Email: vtstownsville@msq.qld.gov.au

Notice authorised by: Regional Harbour Master (Townsville) - Maritime Safety Queensland

Legend

-  Space launch vehicle
-  Territorial Sea limit
-  Abbot Point safety exclusion area
-  Australian Territorial Sea and GBRMPA area
-  Coral Sea area

Point	Latitude	Longitude
A	19° 55.099' S	148° 05.671' E
B	19° 51.012' S	148° 13.735' E
C	19° 28.369' S	148° 58.095' E
D	19° 29.295' S	149° 00.357' E
E	19° 38.762' S	148° 55.321' E
F	19° 54.579' S	148° 20.258' E
G	19° 57.646' S	148° 13.417' E
H	19° 20.970' S	149° 14.701' E
I	18° 42.215' S	150° 20.701' E
J	18° 44.272' S	150° 29.931' E
K	18° 51.667' S	150° 25.371' E
L	19° 23.527' S	149° 16.703' E



Map S11-714-2

Map Datum: GDA2020
Projection: UTM (MGA Zone 55)

Prepared 15 April 2025
Maritime Safety Queensland
Port Operations and VTS - Spatial Services

Navigation constraints issued by Regional Harbour Master (Townsville)

SPACE LAUNCH - DEBRIS HAZARD ZONE ABBOT POINT

© The State of Queensland 2025
Transport and Main Roads

