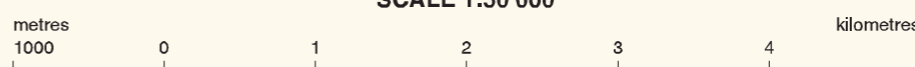


ACID SULFATE HAZARD KEPPEL SANDS - YEPPOON

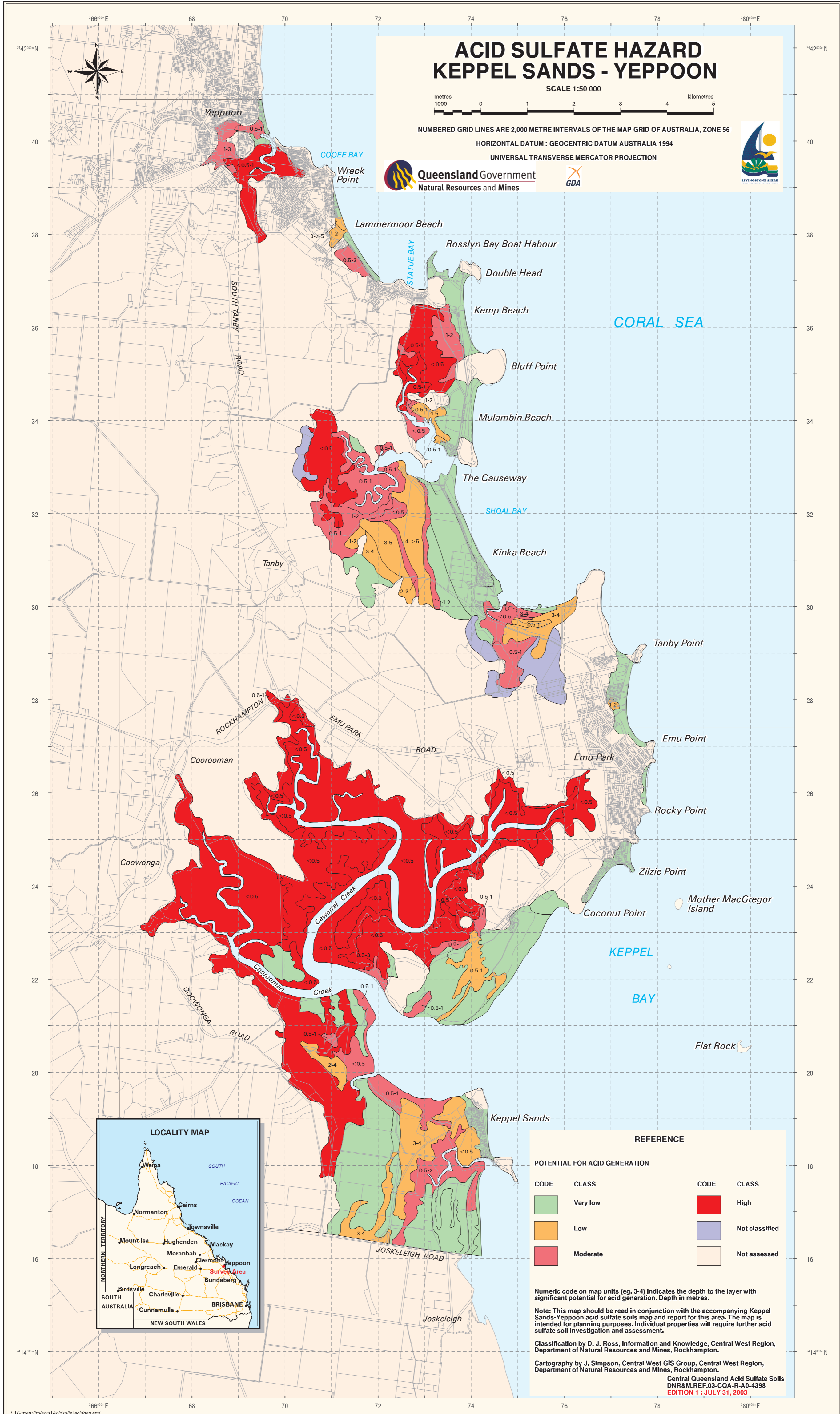
SCALE 1:50 000



NUMBERED GRID LINES ARE 2,000 METRE INTERVALS OF THE MAP GRID OF AUSTRALIA, ZONE 56

HORIZONTAL DATUM : GEOCENTRIC DATUM AUSTRALIA 1994

UNIVERSAL TRANSVERSE MERCATOR PROJECTION



REFERENCE			
POTENTIAL FOR ACID GENERATION			
CODE	CLASS	CODE	CLASS
	Very low		High
	Low		Not classified
	Moderate		Not assessed

Numeric code on map units (eg. 3-4) indicates the depth to the layer with significant potential for acid generation. Depth in metres.

Note: This map should be read in conjunction with the accompanying Keppel Sands-Yeppoon acid sulfate soils map and report for this area. The map is intended for planning purposes. Individual properties will require further acid sulfate soil investigation and assessment.

Classification by D. J. Ross, Information and Knowledge, Central West Region, Department of Natural Resources and Mines, Rockhampton.

Cartography by J. Simpson, Central West GIS Group, Central West Region, Department of Natural Resources and Mines, Rockhampton.

Central Queensland Acid Sulfate Soils
DNR&M.REF.03-CQA-R-A0-4398
EDITION 1 : JULY 31, 2003