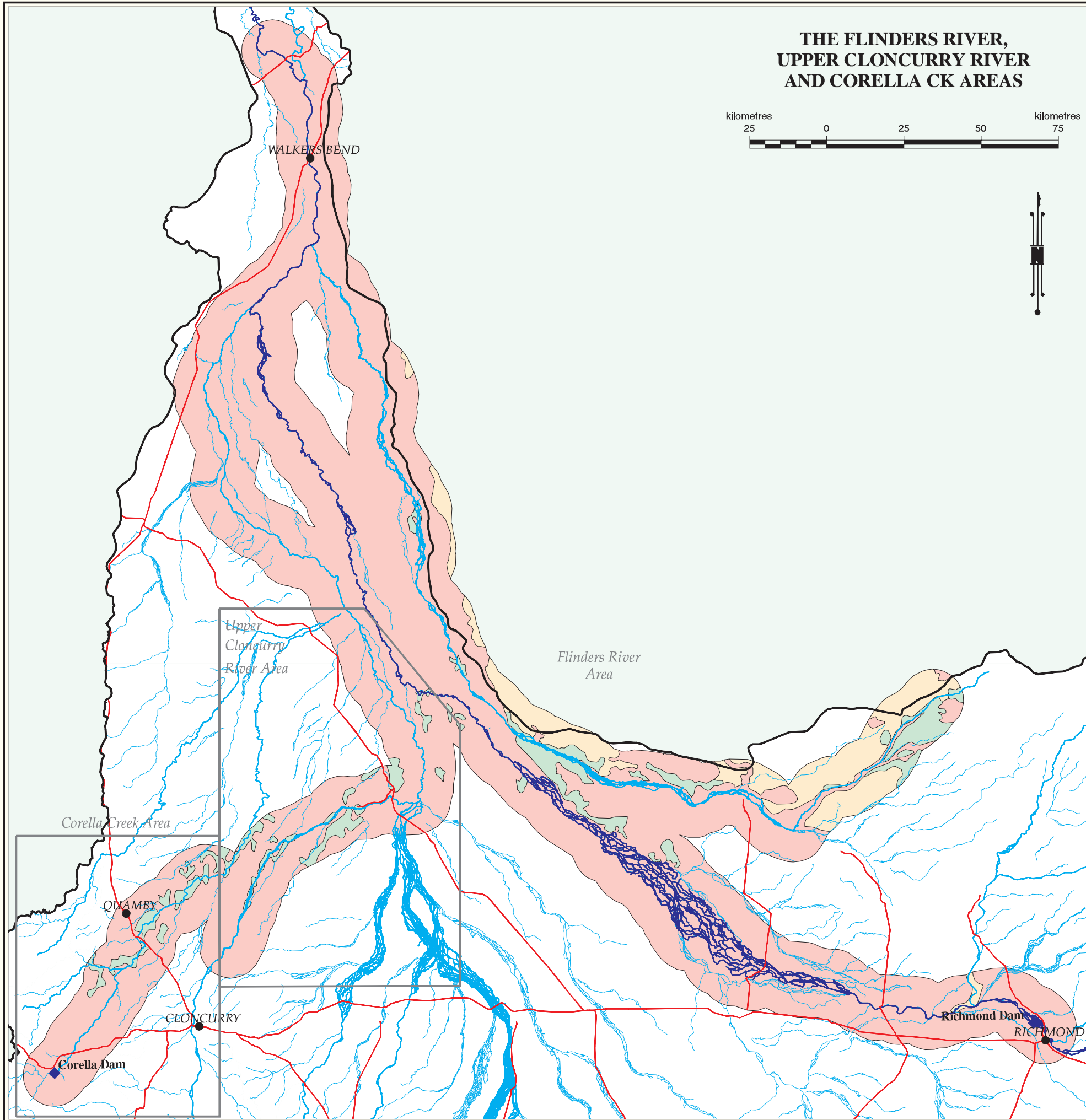


THE FLINDERS RIVER, UPPER CLONCURRY RIVER AND CORELLA CK AREAS

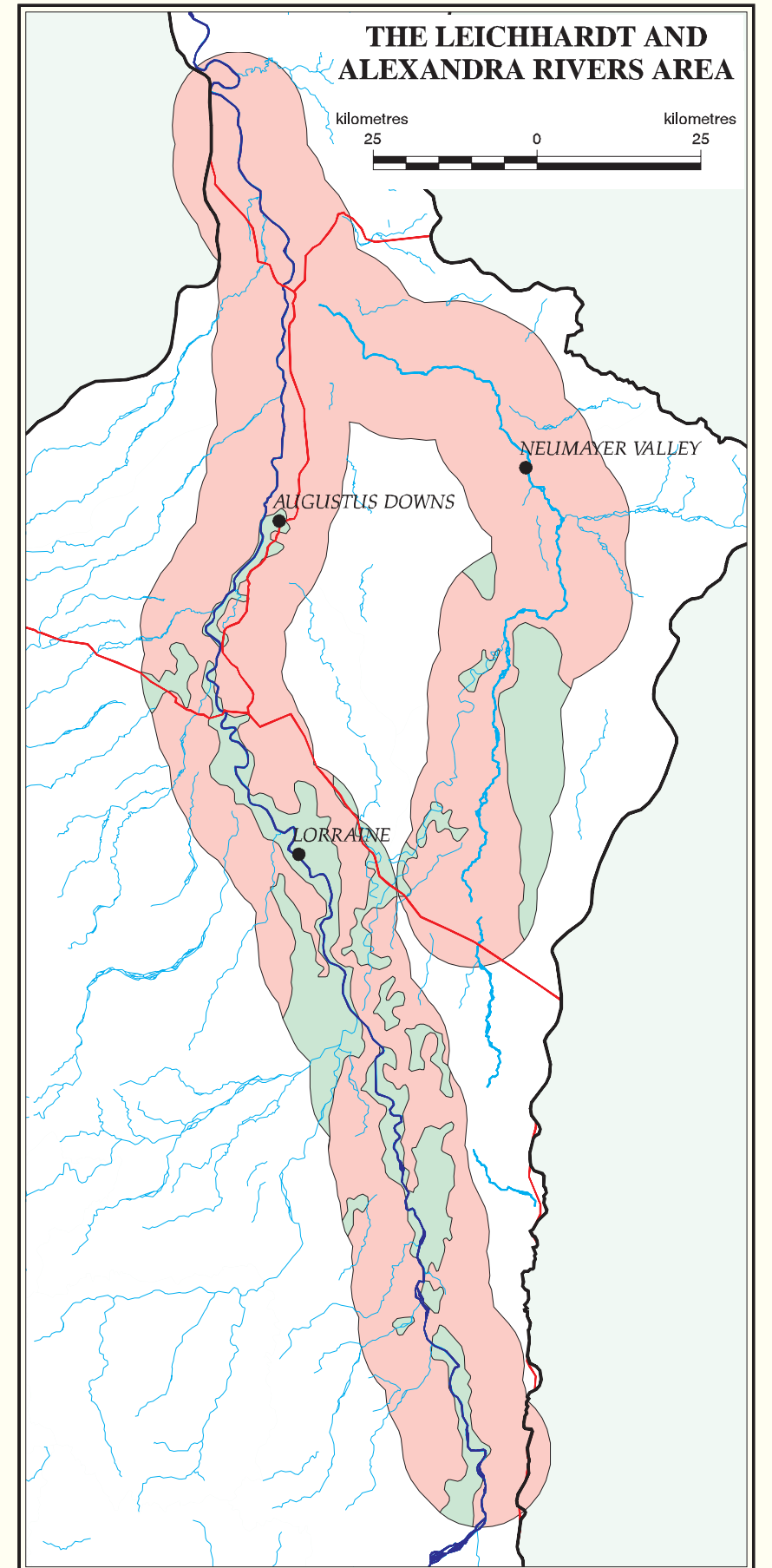
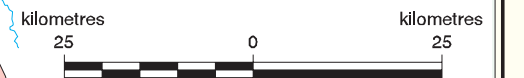


FIELD CROP SUITABILITY

This map is the second map in this suitability series and accompanies the report An Assessment of Agricultural Potential of Soils in the Gulf Region, North Queensland (Wilson P.L. and Philip S.R. 1999). Refer to Map (a) for the reference and source statement.

© COPYRIGHT: The State of Queensland through the Queensland Department of Natural Resources and Mines, 2001.

THE LEICHHARDT AND ALEXANDRA RIVERS AREA



DISCLAIMER: This is a scanned image and some detail may be illegible or lost. While every care is taken to ensure the accuracy of this product, the Department of Natural Resources and Mines makes no representations or warranties about its accuracy, reliability, completeness or suitability for any particular purpose and disclaims all responsibility and all liability (including without limitation, liability in negligence) for all expenses, losses, damages (including indirect or consequential damage) and costs which you might incur as a result of the product being inaccurate or incomplete in any way for any reason.