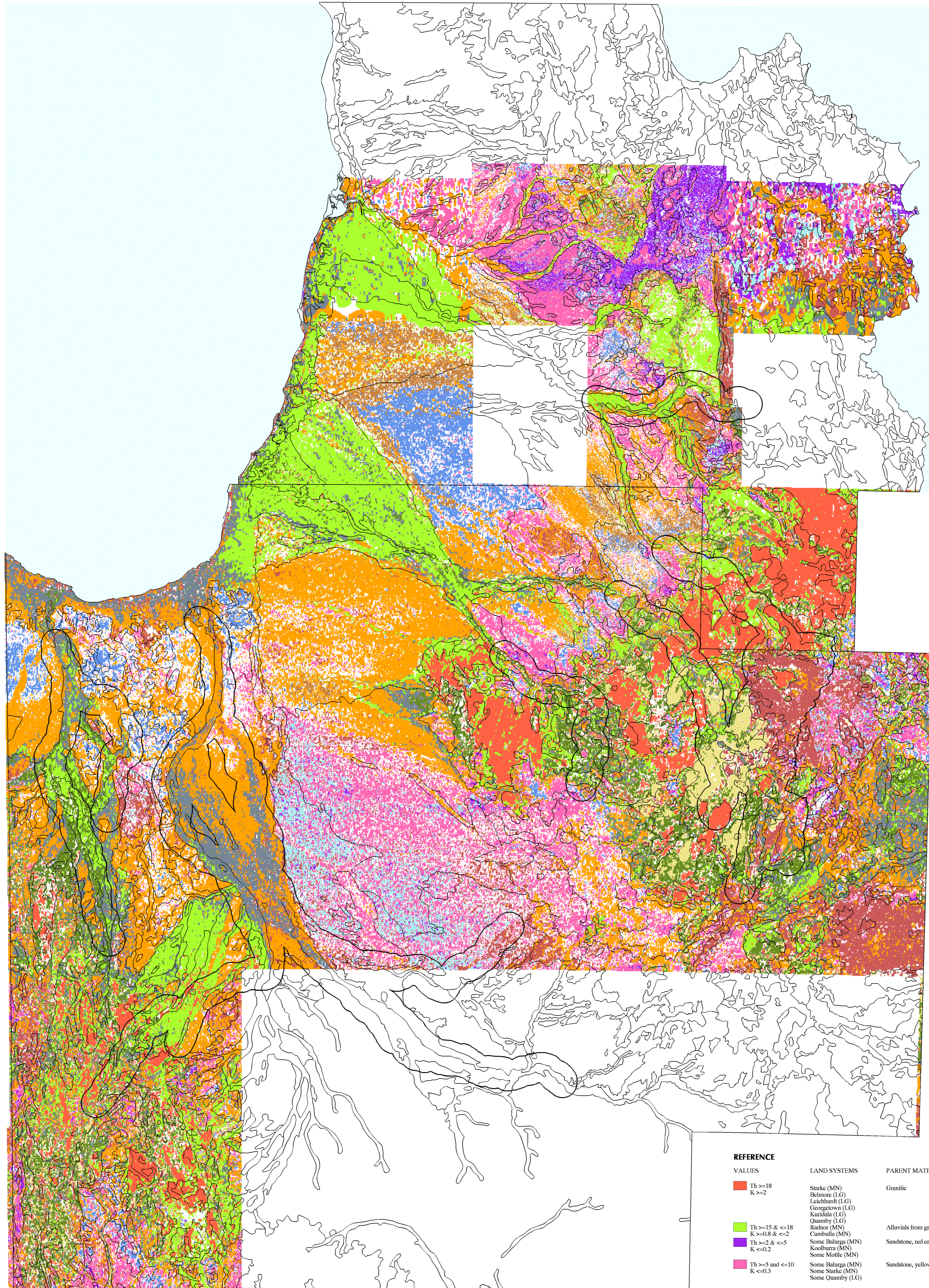
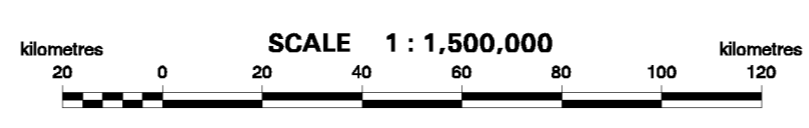


A Regional Interpretation Of Airborne Gamma Spectrometry Data



REFERENCE

VALUES	LAND SYSTEMS	PARENT MATERIAL & SOIL
Th >=18 K >=2	Sturke (MN) Belmore (LG) Leichhardt (LG) Georgetown (LG) Kurudla (LG) Quamby (LG) Radnor (MN) Cumbulla (MN) Some Balarga (MN) Some Starke (MN) Some Mottle (MN)	Granitic Alluvials from granitic parent materials Sandstone, red earth and sands
Th >=15 & <=18 K >=0.8 & <=2	Some Balarga (MN) Koolbarra (MN) Some Mottle (MN)	Sandstone, yellow earths and light brown sandy soils
Th >=2 & <=5 K <=0.2	Some Balarga (MN) Some Starke (MN) Some Quamby (LG)	
Th >=5 & <=10 K <=0.3	Some Balarga (MN) Some Starke (MN) Some Quamby (LG)	
Th >=10 & <=15 K >=0.4 & <=1.2	Mayvale (LG)	Podzolics, sand over clay duplex soils
Th >=12 & <=18 K <=0.3	Leinster (MN)	Grey brown earths
Th >=10 & <=15 K >=1.0 & <=1.5	Balbirini (LG)	Fine grained alluvium, brown clays
Th <=10 K >=0.4 & <=1.2	Booneroo (LG) Rosella (LG) Maple (MN) Kilbolgie (LG) Recly Springs (LG) Some Booneroo (LG)	Basalts, red and black earths. Also shales, grey clays
Th <=10 K >=1.5	Recly Springs (LG) Some Booneroo (LG)	Rhyolitic and granites, shallow sands, red and yellow podzolics
Th >=15 & <=30 K >=0.3 & <=0.6	Dunbar (MN)	Alluvials, leached grey-brown earths
Th >=2 & <=5 K >=0.2 & <=0.4	Bylong (LG) Some Koolbarra (MN)	Colluvial unconsolidated sand and shallow eroded sandstone
Th >=10 & <=15 K >=1.5	Stanhill (LG) Georgetown (LG) Townley (LG)	Rhyolites and granites, skeletal sands and grit



Land system boundaries.
Key areas boundaries.

Radiometrics Values
K - Potassium
Th - Thorium
U - Uranium
Land System Title
(MN) - Mitchell/Normalby report
(LG) - Leichhardt/Gilbert report

SOURCE:
AGS data shown on this map was supplied by AGSO (Australian Geological Survey Organisation).
This map accompanies the report "An Assessment of Agricultural Potential of Soils in the Gulf Region, North Queensland." (Wilson & Philip, February 1999)

DISCLAIMER:
While every care is taken to ensure the accuracy of this product, the Department of Natural Resources and Mines makes no representations or warranties about its accuracy, reliability, completeness or suitability for any particular purpose and disclaims all responsibility and all liability (including without limitation, liability in negligence) for all expenses, losses, damages (including indirect or consequential damage) and costs which you might incur as a result of the product being inaccurate or incomplete in any way for any reason.

© COPYRIGHT: The State of Queensland through the Queensland Department of Natural Resources, 1999.
Produced by the Queensland Department of Natural Resources Resource Management GIS & Cartography Unit, Marooch, May 1999
DNR-REF-No 99-01UF-M-3219