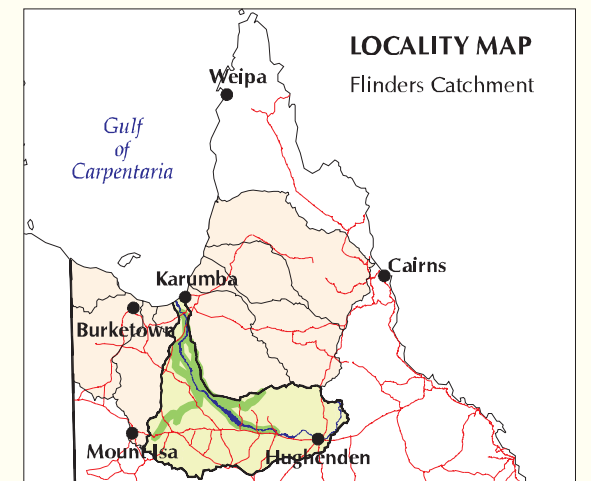


THE FLINDERS RIVER, UPPER CLONCURRY RIVER AND CORELLA CK AREAS

SOIL LANDSCAPES

- Blakens (Active) (647 800 ha)
- Blakens (Old) (873 100 ha)
- Blakens (Sedentary) (262 500 ha)
- Cockatoo (163 000 ha)
- Hills - Sandstone (126 900 ha)
- Hills - Tertiary (58 800 ha)
- Minty (150 900 ha)
- Price (40 400 ha)
- Willow (76 400 ha)
- Zingari (8 300 ha)



SOURCE: The information shown on this map has been prepared for the Department of Natural Resources Regional Infrastructure Development and is commensurate with reconnaissance level mapping. This map is intended for broad scale planning processes and is supplied by the Department of Natural Resources, Mareeba, Queensland.
Topographic information supplied by AUSLIG with a data capture scale of 1:250,000.

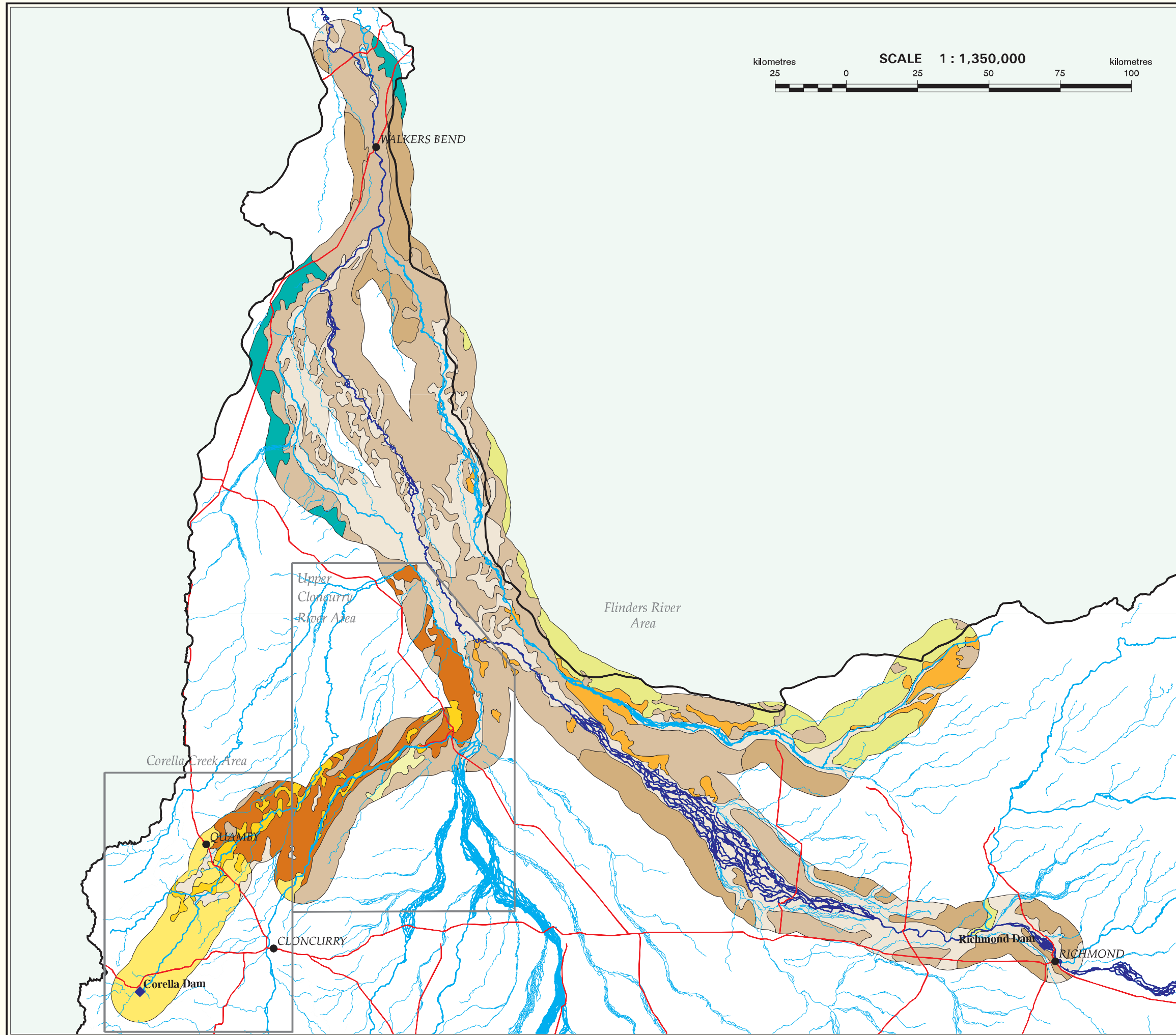
LEGEND

- Catchment Boundary
- Major River Channel
- Major Rivers
- Major Creeks
- Highways and Major Roads
- Potential Dam Site
- Potential Regulating Weir
- Locality

Produced by the Queensland
Department of Natural Resources
and Mines
Resource Management
GIS & Cartography Unit, Mareeba.
Cartography by S.R. Philip
August 2001
NR&M-REF-No 01-GULF-M-j2960

© COPYRIGHT: The State of Queensland
through the Queensland Department
of Natural Resources and Mines, 2001.

kilometres 25 0 25 50 75 100
SCALE 1 : 1,350,000
kilometres



DISCLAIMER: This is a scanned image and some detail may be illegible or lost. While every care is taken to ensure the accuracy of this product, the Department of Natural Resources and Mines makes no representations or warranties about its accuracy, reliability, completeness or suitability for any particular purpose and disclaims all responsibility and all liability (including without limitation, liability in negligence) for all expenses, losses, damages (including indirect or consequential damage) and costs which you might incur as a result of the product being inaccurate or incomplete in any way for any reason.