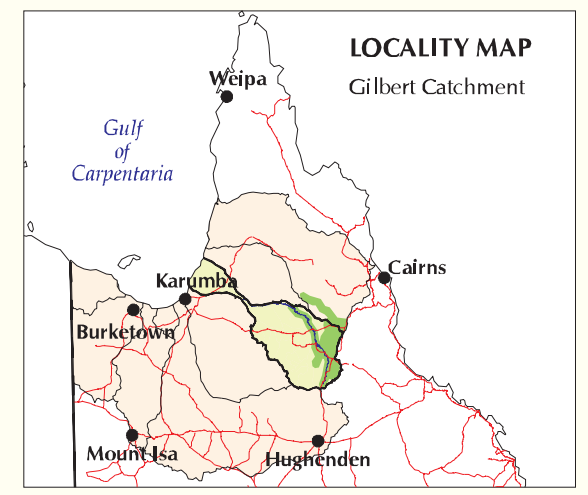


THE LYND RIVER, EINASLEIGH/ COPPERFIELD RIVERS, McBRIDE PLATEAU AND BUNDOCK/McKINNON'S CK AREAS SOIL LANDSCAPES

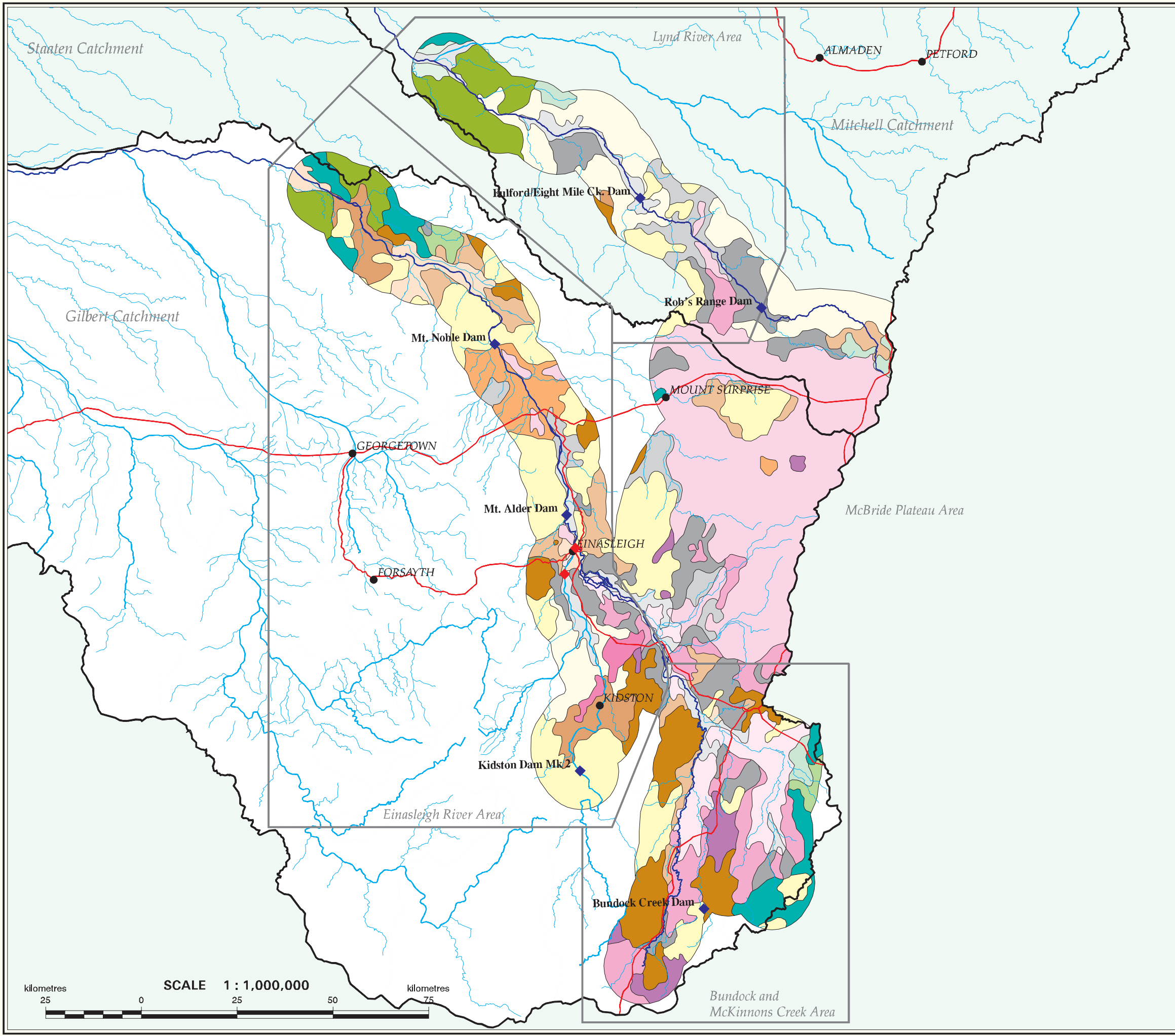
- Alluvial - Granite (53 300 ha)
- Plains - Granite (49 900 ha)
- Undulating - Granite (117 500 ha)
- Rolling - Granite (142 600 ha)
- Hills - Granite (247 300 ha)
- Alluvial - Metamorphics (27 500 ha)
- Plains - Metamorphics (36 300 ha)
- Undulating - Metamorphics (64 000 ha)
- Rolling - Metamorphics (37 900 ha)
- Hills - Metamorphics (94 600 ha)
- Alluvial - Basalt (61 500 ha)
- Plains - Basalt (289 200 ha)
- Undulating - Basalt (91 300 ha)
- Rolling - Basalt (9 900 ha)
- Hills - Basalt (23 800 ha)
- Alluvial - Tertiary (4 700 ha)
- Plains - Tertiary (15 300 ha)
- Undulating - Tertiary (11 000 ha)
- Rolling - Tertiary (71 300 ha)
- Hills - Tertiary (47 400 ha)



SOURCE: The information shown on this map has been prepared for the Department of Natural Resources Regional Infrastructure Development and is commensurate with reconnaissance level mapping. This map is intended for broad scale planning processes and is supplied by the Department of Natural Resources, Mareeba, Queensland.
Topographic information supplied by AUSLIG with a data capture scale of 1:250,000.

- LEGEND**
- Catchment Boundary
 - Major River Channel
 - Major Rivers
 - Major Creeks
 - Highways and Major Roads
 - Potential Dam Site
 - Potential Regulating Weir
 - Locality

Produced by the Queensland Department of Natural Resources and Mines
Resource Management GIS & Cartography Unit, Mareeba.
Cartography by S.R.Phillip
August 2001
NR&M-REF-No 01-GULF-M-j2960



kilometres 25 0 25 50 75
SCALE 1 : 1,000,000
kilometres