

Land Use Summary 1999–2013

for the Brisbane River sub-catchment within SEQ

Prepared by: Remote Sensing Centre, Science Division, Department of Science, Information Technology, Innovation and the Arts, GPO Box 5078, BRISBANE QLD 4001

Telephone: (07) 3170 5664

Email: craig.shephard@dsitia.qld.gov.au

Web: www.qld.gov.au/environment/land/vegetation/mapping/qlump/

© The State of Queensland (Department of Science, Information Technology, Innovation and the Arts) 2014

The State of Queensland has no objection to this material being reproduced, made available online or electronically, provided it is for your personal, non-commercial use, or use within your organisation; the material remains unaltered; and the State of Queensland is recognised as the owner.

Disclaimer

This document has been prepared with all due diligence and care, based on the best available information at the time of publication. The department holds no responsibility for any errors or omissions within this document. Any decisions made by other parties based on this document are solely the responsibility of those parties.

If you need to access this document in a language other than English, please call the Translating and Interpreting Service (TIS National) on 131 450 and ask them to telephone Library Services on +61 7 3224 8412.

This publication can be made available in an alternative format (e.g. large print or audiotape) on request for people with vision impairment; phone +61 7 3224 8412 or email library@dnrm.qld.gov.au

Citation

DSITIA. 2014, Land use Summary 1999–2013: Brisbane River sub-catchment, Department of Science, Information Technology, Innovation and the Arts, Queensland Government.

Digital Data is supplied with a licence and by using the data you confirm that you have read the licence conditions included with the data and that you agree to be bound by its terms.

This material is licensed under a [Creative Commons - Attribution 3.0 Australia](https://creativecommons.org/licenses/by/3.0/au/) licence.



To access land use datasets it is recommended that the [Queensland Government Information Service](http://www.qgis.org/) (QGIS) be used. Search for "**land use mapping**" in the type of data search after restricting your search to "**cadastral and land planning**" in the topic category field. Metadata is also available from QGIS.

Acknowledgements

We wish to acknowledge the Australian Bureau of Agricultural and Resource Economics and Sciences (ABARES) who coordinate the Australian Collaborative Land Use and Management Program (ACLUMP).

The QLUMP team includes staff from DSITIA in Brisbane and four business centres of the Department of Natural Resource and Mines (DNRM) South Region. The input from the regions has been extremely valuable in respect of their mapping skills, local knowledge and capacity to engage regional experts in compiling updated land use mapping data.

June 2014

CCI job number: cs0213

Table of contents

Introduction	4
Methodology	4
Data Limitations	6
Products	7
1999 and 2013 land use datasets	7
1999–2013 land use change dataset	12
Data format and availability	15
Download land use datasets	15
Request a land use map	15
View land use on the Queensland Globe	15
Appendix A Accuracy assessment	16
2013 land use dataset	17

List of tables

Table 1: Summary statistics of land use in 1999 in the Brisbane River sub-catchment	10
Table 2: Summary statistics of land use in 2013 in the Brisbane River sub-catchment	11
Table 3: Summary statistics for land use change at secondary level for 1999–2013 in the Brisbane River sub-catchment (showing only the land use changes > 85ha).....	14
Table 4: Error matrix for the Brisbane River sub-catchment 2013 land use dataset	18
Table 5: User's and producer's accuracy for the Brisbane River sub-catchment 2013 land use dataset.....	19

List of figures

Figure 1: Australian Land Use and Management (ALUM) classification, Version 7	5
Figure 2: 1999 land use map for the Brisbane River sub-catchment	8
Figure 3: 2013 land use map for the Brisbane River sub-catchment	9
Figure 4: 1999–2013 land use change map at secondary level for the Brisbane River sub-catchment	13

Introduction

The [Queensland Land Use Mapping Program](#) (QLUMP) is a joint initiative of the Department of Science, Information Technology, Innovation and the Arts (DSITIA) and the Department of Natural Resources and Mines (DNRM). QLUMP is part of the [Australian Collaborative Land Use and Management Program](#) (ACLUMP) coordinated by the Australian Bureau of Agricultural and Resource Economics and Sciences (ABARES). ACLUMP promotes nationally consistent land use information.

Land use and land management practices have a profound impact on Queensland's natural resources, agricultural production and the environment. The availability of consistent and reliable spatial information regarding land use is critical for sustainable natural resource management by Australian, Queensland and local Governments, Natural Resource Management regional groups, industry groups, community groups and land managers.

QLUMP has updated land use mapping in the South-East Queensland (SEQ) Natural Resource Management Region to 2011 or later. Mapping has been compiled at the catchment level, with the exception of the Brisbane catchment, which has been divided into its sub-catchments (Brisbane River, Stanley River, Lockyer Creek and Bremer River) due to the size and diversity of the area. Apart from the Maroochy and Noosa catchments (2011) and the Brisbane River sub-catchment (2013), remaining catchments in SEQ were updated to 2012.

This report presents and summarises land use mapping in the Brisbane River sub-catchment (which accounts for 30% of SEQ total area) including:

- a revised 1999 land use dataset which includes improvements and corrections to the original
- 2013 land use dataset
- land use change dataset from 1999–2013
- summary statistics derived from the above spatial datasets
- results of the accuracy assessment of the 2013 land use dataset

Methodology

Mapping is performed in accordance with ACLUMP guidelines. The methodology is accurate, reliable, cost-effective, and makes best use of available databases, satellite imagery and aerial photography. QLUMP maps each catchment with the most recent suitable imagery available. The updated land use datasets for each catchment within SEQ range from 2011 to 2013.

The Australian Land Use and Management (ALUM) classification (Figure 1, page 5) shows five primary classes, identified in order of increasing levels of intervention or potential impact of land use; *water* is included separately as a sixth primary class. Within the primary classes is a [three-level hierarchical structure](#). Primary, secondary and tertiary levels broadly describe the potential degree of modification of or impact of land use on the landscape. The secondary level in the three-level hierarchical structure is the minimum attribution level for land use mapping in Queensland.

Primary and secondary levels relate to land use (i.e. the principal use of the land in terms of the objectives of the land manager). The tertiary level includes data on commodities or infrastructure, (e.g. crops such as cereals or infrastructure such as *urban residential*). Where possible, class attribution is performed to the tertiary level. For instance, QLUMP consistently maps land use classes *sugar* and *cotton* (dryland and irrigated) to tertiary level.

The mapping scale is 1:50,000 with a minimum mapping unit of two hectares and a width of 50 metres for linear features.

The 1999 (or later where available) baseline land use dataset formed the basis for the 2013 land use dataset. The 1999 land use map was revised and improved in addition to compiling an updated land use map for 2013. This was achieved primarily by interpretation of SPOT5 satellite imagery, high-resolution orthophotography, scanned aerial photography and inclusion of expert local knowledge. An ESRI ArcSDE geodatabase replication environment was utilised to overlay land use datasets on imagery and digitise or modify areas previously omitted or incorrectly mapped in the 1999 mapping, as well as areas of actual land use change (2013). A land use change mapping product was then derived (at the secondary level of the ALUM classification) between 1999 and 2013.

Some land uses are difficult to differentiate using satellite imagery and existing databases, for example, dryland and irrigated *agriculture*. To overcome this, local expert knowledge was used and is an important component of the mapping methodology. This was provided by regional staff in state government agencies, natural resource management groups, shires, agricultural industries and landholders. Field survey is also undertaken to verify areas of uncertainty in the land use mapping.

The land use mapping methods used by QLUMP are described in full in the ABARES handbook: [Guidelines for land use mapping in Australia: principles, procedures & definitions – Edition 4](#)

1 Conservation and Natural Environments	2 Production from Relatively Natural Environments	3 Production from Dryland Agriculture and Plantations	4 Production from Irrigated Agriculture and Plantations	5 Intensive Uses	6 Water
1.1.0 Nature conservation 1.1.1 Strict nature reserves 1.1.2 Wilderness area 1.1.3 National park 1.1.4 Natural feature protection 1.1.5 Habitat/species management area 1.1.6 Protected landscape 1.1.7 Other conserved area 1.2.0 Managed resource protection 1.2.1 Biodiversity 1.2.2 Surface water supply 1.2.3 Groundwater 1.2.4 Landscape 1.2.5 Traditional Indigenous uses 1.3.0 Other minimal use 1.3.1 Defence land-natural areas 1.3.2 Stock route 1.3.3 Residual native cover 1.3.4 Rehabilitation Minimum level of attribution	2.1.0 Grazing native vegetation 2.2.0 Production forestry 2.2.1 Wood production 2.2.2 Other forest production	3.1.0 Plantation forestry 3.1.1 Hardwood production 3.1.2 Softwood production 3.1.3 Other forest production 3.1.4 Environmental forest plantation 3.2.0 Grazing modified pastures 3.2.1 Native/exotic pasture mosaic 3.2.2 Woody fodder plants 3.2.3 Pasture legumes 3.2.4 Pasture legume/grass mixtures 3.2.5 Sown grasses 3.3.0 Cropping 3.3.1 Cereals 3.3.2 Beverage and spice crops 3.3.3 Hay and silage 3.3.4 Oil seeds 3.3.5 Sugar 3.3.6 Cotton 3.3.7 Alkaloid poppies 3.3.8 Pulses 3.4.0 Perennial horticulture 3.4.1 Tree fruits 3.4.2 Oleaginous fruits 3.4.3 Tree nuts 3.4.4 Vine fruits 3.4.5 Shrub nuts fruits and berries 3.4.6 Perennial flowers and bulbs 3.4.7 Perennial vegetables and herbs 3.4.8 Citrus 3.4.9 Grapes 3.5.0 Seasonal horticulture 3.5.1 Seasonal fruits 3.5.2 Seasonal nuts 3.5.3 Seasonal flowers and bulbs 3.5.4 Seasonal vegetables and herbs 3.6.0 Land in transition 3.6.1 Degraded land 3.6.2 Abandoned land 3.6.3 Land under rehabilitation 3.6.4 No defined use 3.6.5 Abandoned perennial horticulture	4.1.0 Irrigated plantation forestry 4.1.1 Irrigated hardwood production 4.1.2 Irrigated softwood production 4.1.4 Irrigated other forest production 4.1.4 Irrigated environmental forest plantation 4.2.0 Grazing irrigated modified pastures 4.2.1 Irrigated woody fodder plants 4.2.2 Irrigated pasture legumes 4.2.3 Irrigated legume/grass mixtures 4.2.4 Irrigated sown grasses 4.3.0 Irrigated cropping 4.3.1 Irrigated cereals 4.3.2 Irrigated beverage and spice crops 4.3.3 Irrigated hay and silage 4.3.4 Irrigated oil seeds 4.3.5 Irrigated sugar 4.3.6 Irrigated cotton 4.3.7 Irrigated alkaloid poppies 4.3.8 Irrigated pulses 4.3.9 Irrigated rice 4.4.0 Irrigated perennial horticulture 4.4.1 Irrigated tree fruits 4.4.2 Irrigated oleaginous fruits 4.4.3 Irrigated tree nuts 4.4.4 Irrigated vine fruits 4.4.5 Irrigated shrub nuts fruits and berries 4.4.6 Irrigated flowers and bulbs 4.4.7 Irrigated vegetables and herbs 4.4.8 Irrigated citrus 4.4.9 Irrigated grapes 4.5.0 Irrigated seasonal horticulture 4.5.1 Irrigated fruits 4.5.2 Irrigated nuts 4.5.3 Irrigated flowers and bulbs 4.5.4 Irrigated vegetables and herbs 4.5.5 Irrigated turf farming 4.6.0 Irrigated land in transition 4.6.1 Degraded irrigated land 4.6.2 Abandoned irrigated land 4.6.3 Irrigated land under rehabilitation 4.6.4 No defined use (irrigation) 4.6.5 Abandoned irrigated perennial horticulture	5.1.0 Intensive horticulture 5.1.1 Shadehouses 5.1.2 Glasshouses 5.1.3 Glasshouses (hydroponic) 5.1.4 Abandoned intensive horticulture 5.2.0 Intensive animal husbandry 5.2.1 Dairy sheds with yards 5.2.2 Cattle feedlots 5.2.3 Sheep feedlots 5.2.4 Poultry farms 5.2.5 Piggeries 5.2.6 Aquaculture 5.2.7 Horse studs 5.2.8 Stockyards/saleyards 5.2.9 Abandoned intensive animal husbandry 5.3.0 Manufacturing and industrial 5.3.1 General purpose factory 5.3.2 Food processing factory 5.3.3 Major industrial complex 5.3.4 Bulk grain storage 5.3.5 Abattoirs 5.3.6 Oil refinery 5.3.7 Sawmill 5.3.8 Abandoned manufacturing/industrial 5.4.0 Residential and farm infrastructure 5.4.1 Urban residential 5.4.2 Rural residential with agriculture 5.4.3 Rural residential without agriculture 5.4.4 Remote communities 5.4.5 Farm buildings/infrastructure 5.5.0 Services 5.5.1 Commercial services 5.5.2 Public services 5.5.3 Recreation and culture 5.5.4 Defence facilities-urban 5.5.5 Research facilities 5.6.0 Utilities 5.6.1 Fuel powered electricity generation 5.6.2 Hydro electricity generation 5.6.3 Wind farm electricity generation 5.6.4 Electricity substations and transmission 5.6.5 Gas treatment, storage and transmission 5.6.6 Water extraction and transmission 5.7.0 Transport and communication 5.7.1 Airports/aerodromes 5.7.2 Roads 5.7.3 Railways 5.7.4 Ports and water transport 5.7.5 Navigation and communication 5.8.0 Mining 5.8.1 Mines 5.8.2 Quarries 5.8.3 Tailings 5.8.4 Extractive industry not in use 5.9.0 Waste treatment and disposal 5.9.1 Effluent pond 5.9.2 Landfill 5.9.3 Solid garbage 5.9.4 Incinerators 5.9.5 Sewage/sewerage	6.1.0 Lake 6.1.1 Lake-conservation 6.1.2 Lake-production 6.1.3 Lake-intensive use 6.1.4 Lake-saline 6.2.0 Reservoir/dam 6.2.1 Reservoir 6.2.2 Water storage-intensive use/ farm dams 6.2.3 Evaporation basin 6.3.0 River 6.3.1 River-conservation 6.3.2 River-production 6.3.3 River-intensive use 6.4.0 Channel/aqueduct 6.4.1 Supply channel/aqueduct 6.4.2 Drainage channel/aqueduct 6.4.3 Stormwater 6.5.0 Marsh/wetland 6.5.1 Marsh/wetland-conservation 6.5.2 Marsh/wetland-and-production 6.5.3 Marsh/wetland-and-intensive use 6.5.4 Marshland-saline 6.6.0 Estuary/coastal waters 6.6.1 Estuary/coastal waters-conservation 6.6.2 Estuary/coastal waters-production 6.6.3 Estuary/coastal waters-intensive use

Figure 1: Australian Land Use and Management (ALUM) classification, Version 7

Data Limitations

Land use features that are linear, such as roads and railways, are not mappable at a scale of 1:50,000 with a specified minimum mapping width of 50 metres. As a result, the area estimates of these **linear features** represent only a small proportion of the actual area within this land use type in Queensland. This is of relevance to the following land use classes:

- *transport and communication*
- *utilities*
- *rivers*

Similarly, land uses that fall under the QLUMP minimum mapping area of two hectares are not explicitly mapped but aggregated into the surrounding land use class. This will have the effect of over-estimating the area of some land use classes, for example *other minimal use* and *grazing native vegetation*, whereby tracks and farm infrastructure, road reserves, drainage lines, cleared and uncleared land adjacent to rivers as well as land immediately adjacent to or between cropped paddocks are included.

Livestock grazing occurs on a range of pasture types including native and exotic as well as mixtures of both. Identifying and separating these using imagery, aerial photography and field observation is difficult and unreliable. Therefore, the ALUM secondary classes of *grazing modified pastures* and *irrigated grazing modified pastures* have not been mapped explicitly by QLUMP. Where possible (for example, with the benefit of field verification), these classes can be mapped (for example, dairy pastures and fodder crops). Areas of pasture which appeared to be harvested for fodder or grazed off were mapped as *cropping*. This may contribute an over-estimation of cropping in the region. The appearance of these can be highly variable and classification may therefore not be consistent.

The distinction between (dryland) *cropping* and *irrigated cropping* was not always evident and it is likely there is some misclassification in these classes. Proximity to water sources (watercourse or dam) as well as information from water entitlements (irrigation licences), field survey and local knowledge were used to confirm areas of irrigation as much as possible. Areas mapped as *irrigated cropping* are potentially irrigated on a supplementary basis and may not have actually been irrigated in either 1999 or 2013.

The *rural residential* land use class is a source of possible thematic error. Properties on the fringes of suburban settlements, hobby farms and subdivisions in isolated localities with comparatively small lot sizes were mapped to this class. The use of Queensland Valuation System (QVAS) (valuation information) was helpful in mapping this class, based on whether or not the land owner was classified as a primary producer. Residential features greater than 0.2 hectares and less than 16 hectares were mapped as *rural residential*. This class may be misclassified with *grazing native vegetation* and *other minimal use*, especially on larger properties.

A combination of the Queensland Herbarium's [wetlands](#) and [regional ecosystem](#) datasets provided the basis for mapping *marsh/wetlands*, *lakes*, *rivers* and *reservoir/dams*. The ephemeral nature of many of these water features can lead to confusion insofar as they may be present in imagery of one date and either absent or of differing extent in imagery of subsequent or previous dates. As a result, there may be errors, omissions and disagreement in the mapping of features such as farm dams, reservoirs, lakes, wetlands and other water features. Many water features, whilst exceeding the minimum mappable area requirements, do not meet the criteria for linear or uniform features.

The 1999 and 2013 land use datasets are a snapshot of what was interpreted as the primary land use in these years. However, effort was given to distinguishing between an actual land use change and a rotation. For example, an area that is usually cropped, but is not used for that particular purpose in the year of interest, was still mapped as *cropping* in the 2013 dataset even though no crop was present in that year. This was not considered an actual land use change, but rather a rotation, as the primary land use for that paddock would still be *cropping*.

Refer to metadata for details on the mapping of specific classes.

Products

1999 and 2013 land use datasets

Figure 2 (page 8) and Figure 3 (page 9) show the 1999 and 2013 land use datasets respectively, for the Brisbane River sub-catchment, presented at the secondary level of the ALUM classification (Figure 1, page 5). Table 1 (page 10) and Table 2 (page 11) provide the summary statistics for each. All statistics presenting the area of land use classes are reported in hectares (ha).

Table 2 (page 11) shows that *grazing native vegetation* (60%) and *residential and farm infrastructure* (8%) are the major land use classes for 2013 in the Brisbane River sub-catchment.

As a result of the SEQ Forest Agreement, (whereby state forests have been progressively added to the conservation reserves estates), the primary land use class of *nature conservation and environments* increased significantly (by 53% or 30,588ha). At the secondary level, *nature conservation* (23,238ha) and *managed resource protection* (12,604ha) were the main contributors to this increase.

The *other minimal uses* land use class has decreased by 13% or 5,253ha, the majority of which (90% or 4,547ha) was from the tertiary land use class of *residual native vegetation*.

The *intensive uses* primary land use class has shown an increase of 7% or 5,036ha. The majority of this growth was observed in the *residential and farm infrastructure* secondary land use class, which increased by 6% or 3,142ha.

Analysis of the specific land use changes from one secondary class to another for 1999–2013 is presented in the section on page 12.

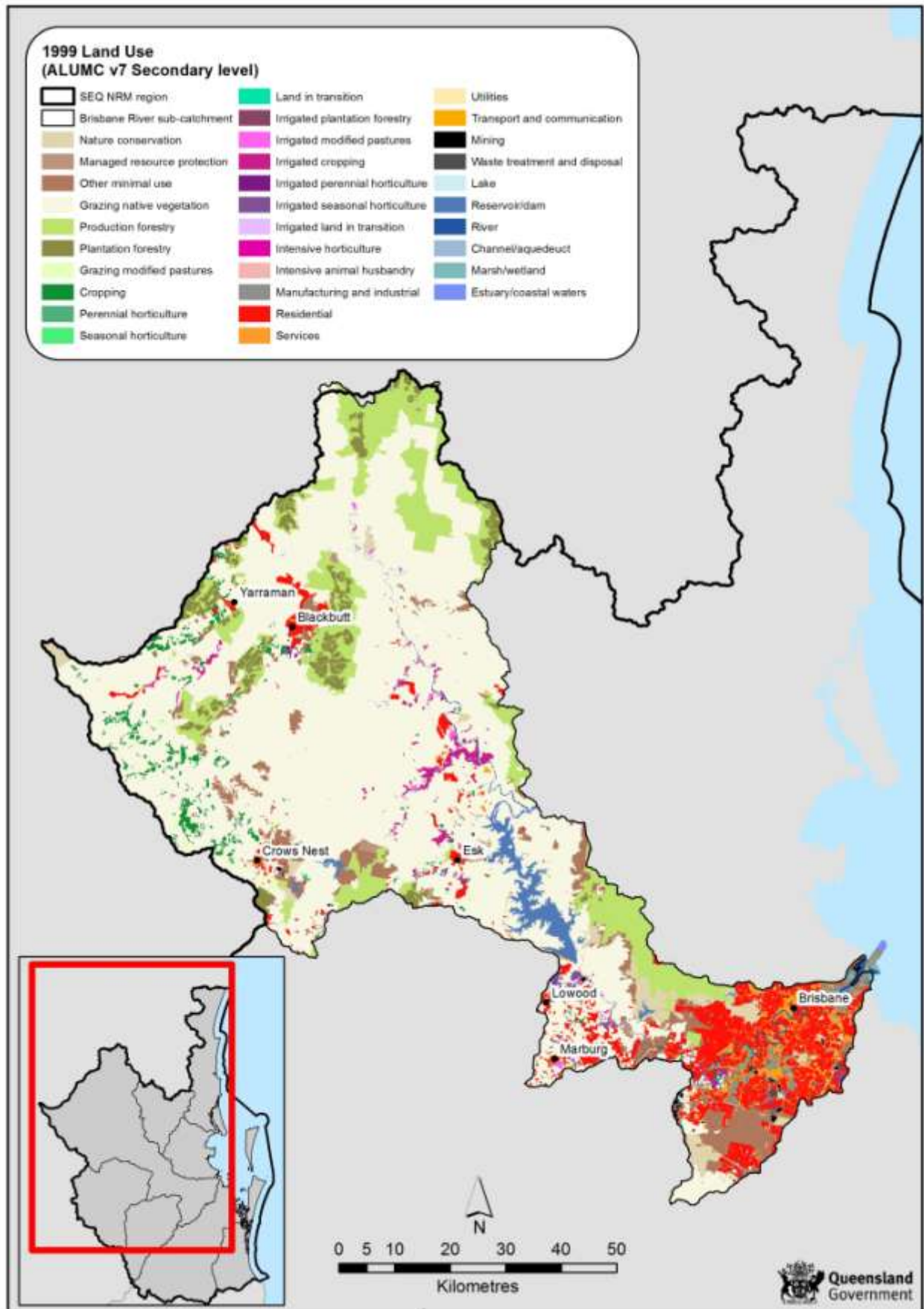


Figure 2: 1999 land use map for the Brisbane River sub-catchment

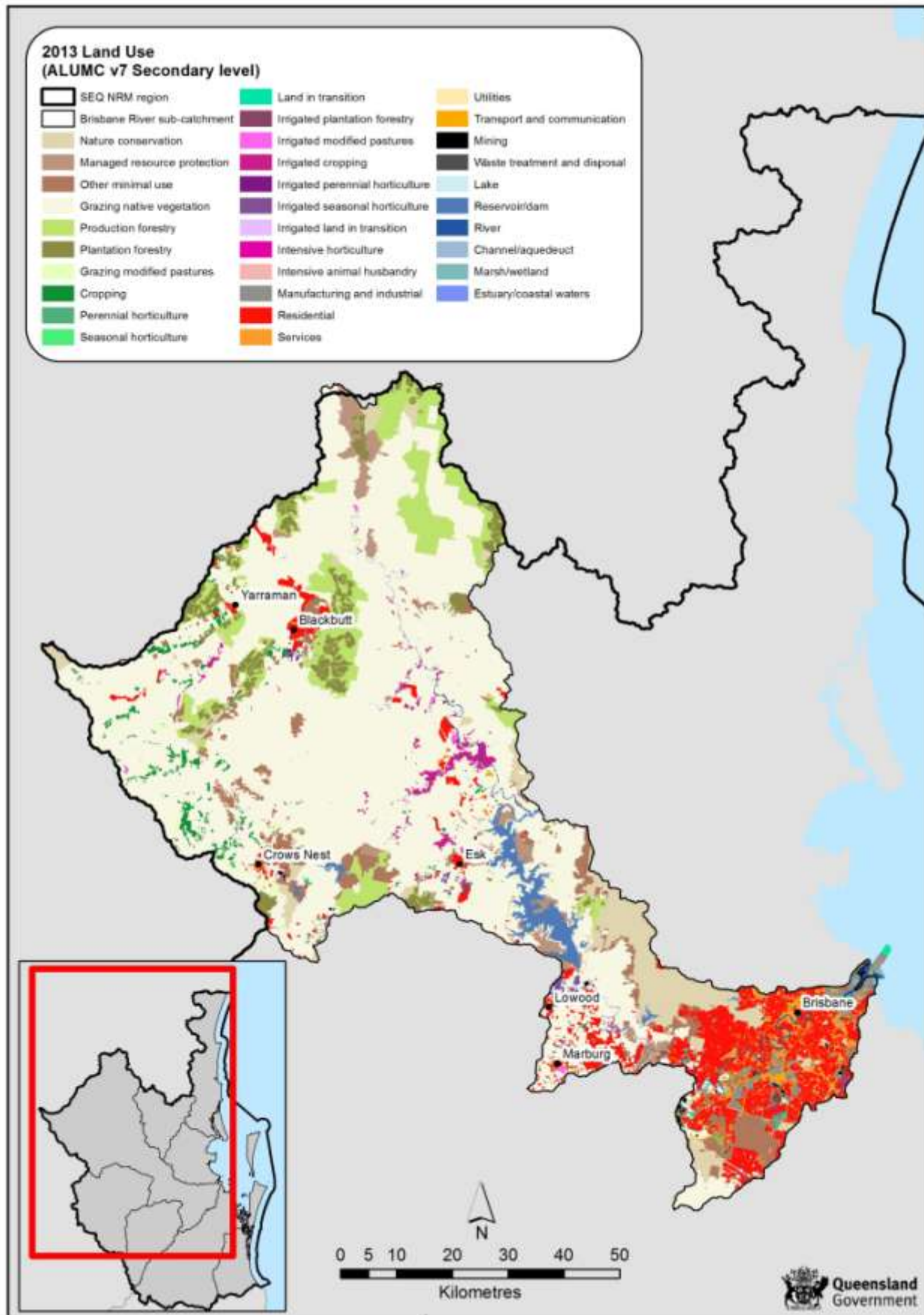


Figure 3: 2013 land use map for the Brisbane River sub-catchment

Table 1: Summary statistics of land use in 1999 in the Brisbane River sub-catchment

Land use code	Land use class	Area (ha)	Area %
1	Conservation and natural environments	57,340	8.20
1.1	Nature conservation	15,557	2.23
1.2	Managed resource protection	1,060	0.15
1.3	Other minimal use	40,722	5.82
2	Production from relatively natural environments	505,841	72.35
2.1	Grazing native vegetation ¹	426,338	60.98
2.2	Production forestry	79,503	11.37
3	Production from dryland agriculture and plantations	34,023	4.87
3.1	Plantation forestry	20,403	2.92
3.2	Grazing modified pastures ²	3,465	0.50
3.3	Cropping	8,916	1.28
3.4	Perennial horticulture	760	0.11
3.5	Seasonal horticulture	22	<0.01
3.6	Land in transition	457	0.07
4	Production from irrigated agriculture and plantations	9,646	1.38
4.1	Irrigated plantation forestry	144	0.02
4.2	Irrigated grazing modified pastures ²	822	0.12
4.3	Irrigated cropping	5,782	0.83
4.4	Irrigated perennial horticulture	608	0.09
4.5	Irrigated seasonal horticulture	2,289	0.33
5	Intensive uses	74,123	10.60
5.1	Intensive horticulture	100	0.01
5.2	Intensive animal husbandry	299	0.04
5.3	Manufacturing and industrial	4,546	0.65
5.4	Residential and farm infrastructure	53,808	7.70
5.5	Services	11,245	1.61
5.6	Utilities	405	0.06
5.7	Transport and communication	2,215	0.32
5.8	Mining	1,025	0.15
5.9	Waste treatment and disposal	481	0.07
6	Water	18,187	2.60
6.2	Reservoir/dam	12,431	1.78
6.3	River	4,180	0.60
6.4	Channel/aqueduct	117	0.02
6.5	Marsh/wetland	1,226	0.18
6.6	Estuary/coastal waters	233	0.03
Grand Total		699,160	100.00

¹grazing native vegetation includes all pastures (modified and unmodified). No distinction is made in respect of tree cover.

²grazing modified pastures and irrigated grazing modified pastures are not mapped explicitly. In this case the areas mapped are generally dairy pastures.

Table 2: Summary statistics of land use in 2013 in the Brisbane River sub-catchment

Land use code	Land use class	Area (ha)	Area %
1	Conservation and natural environments	87,928	12.58
1.1	Nature conservation	38,795	5.55
1.2	Managed resource protection	13,664	1.95
1.3	Other minimal use	35,469	5.07
2	Production from relatively natural environments	470,417	67.28
2.1	Grazing native vegetation ¹	419,979	60.07
2.2	Production forestry	50,438	7.21
3	Production from dryland agriculture and plantations	34,847	4.98
3.1	Plantation forestry	22,569	3.23
3.2	Grazing modified pastures ²	3,307	0.47
3.3	Cropping	6,591	0.94
3.4	Perennial horticulture	984	0.14
3.5	Seasonal horticulture	22	<0.01
3.6	Land in transition	1,374	0.20
4	Production from irrigated agriculture and plantations	8,900	1.27
4.1	Irrigated plantation forestry	241	0.03
4.2	Irrigated grazing modified pastures ²	712	0.10
4.3	Irrigated cropping	5,188	0.74
4.4	Irrigated perennial horticulture	715	0.10
4.5	Irrigated seasonal horticulture	2,036	0.29
4.6	Irrigated land in transition	8	<0.01
5	Intensive uses	79,159	11.32
5.1	Intensive horticulture	162	0.02
5.2	Intensive animal husbandry	337	0.05
5.3	Manufacturing and industrial	5,394	0.77
5.4	Residential and farm infrastructure	56,950	8.15
5.5	Services	11,954	1.71
5.6	Utilities	472	0.07
5.7	Transport and communication	2,563	0.37
5.8	Mining	852	0.12
5.9	Waste treatment and disposal	476	0.07
6	Water	17909	2.57
6.1	Lake	20	<0.01
6.2	Reservoir/dam	12,410	1.77
6.3	River	4,178	0.60
6.4	Channel/aqueduct	117	0.02
6.5	Marsh/wetland	1,184	0.17
Grand Total		699,160	100.00

¹grazing native vegetation includes all pastures (modified and unmodified). No distinction is made in respect of tree cover.

²grazing modified pastures and irrigated grazing modified pastures are not mapped explicitly. In this case the areas mapped are generally dairy pastures.

1999–2013 land use change dataset

Figure 4 (page 13), shows the 1999–2013 land use change dataset for the Brisbane River sub-catchment. The data has been presented relative to the **change in intensity** of the land use at the secondary level of the ALUM classification.

For example, change from 2.1.0 (*grazing native vegetation*) to 2.2.0 (*production forestry*) is an increase in land use intensity, whilst change from 2.1.0 (*grazing native vegetation*) to 1.1.0 (*nature conservation*) is a decrease. This is highlighted in the ALUM classification (Figure 1, page 5). Moving down and from left to right through the classification, the level of intervention or potential impact of land use increases.

The total area of land use change at the secondary level from 1999–2013 is 53,606ha. This is equivalent to 8% of the catchment area. Of this, 11,251ha (21% of the total change) is an increase in land use intensity, whilst 42,354ha (79%) is a decrease.

Summary statistics presenting the land use change at the secondary level for 1999–2013 are shown in Table 3 (page 14). The change from *production forestry* to *nature conservation* (23,262ha or 43% of the total change) and *managed resource protection* (5,533ha or 10%) can be attributed to the SEQ Forest Agreement, as State forests in SEQ have been progressively added to the conservation reserves estates.

Other significant land use changes were from *grazing native vegetation* (5,186ha or 10%) to *managed resource protection*, which was associated with the establishment of Nature Refuges in 2011 around Wivenhoe and Somerset Dams.

Collectively, the expansion of the intensive land use classes including *manufacturing and industrial, residential and farm infrastructure, services, utilities, transport and communications and waste treatment and disposal* accounted for 5,802ha or 11% of the 1999–2013 land use change in the Brisbane River sub-catchment. A significant proportion of this change (2,403ha) came from the *residual native vegetation* tertiary land use class in the southern part of the Brisbane River sub-catchment.

Interestingly, some 233ha of *estuary/coastal waters* in 1999 has changed to *land in transition* in the updated land use mapping. This is due to the expansion of the port infrastructure at the Port of Brisbane, where land reclamation works are in progress.

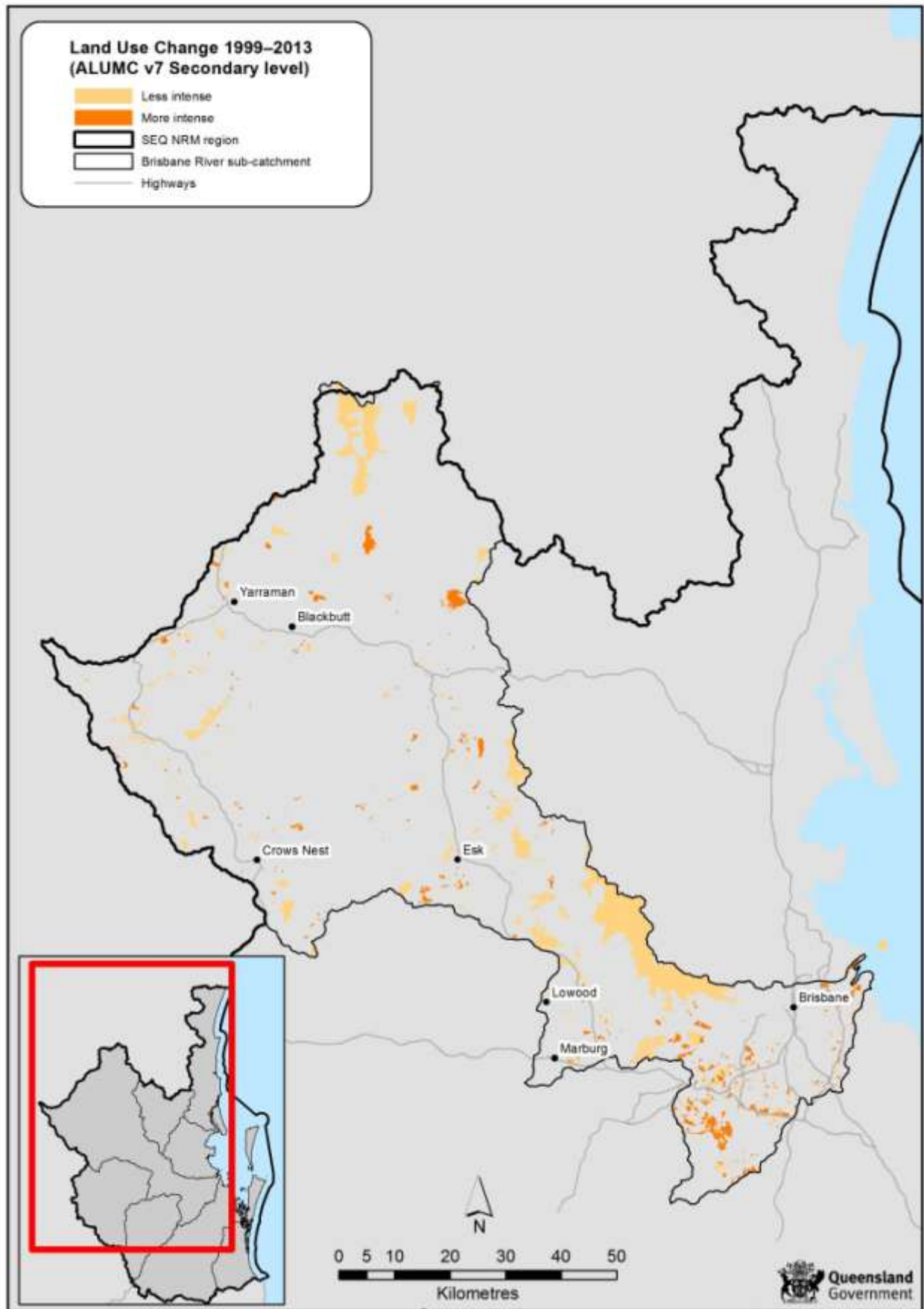


Figure 4: 1999–2013 land use change map at secondary level for the Brisbane River sub-catchment

Table 3: Summary statistics for land use change at secondary level for 1999–2013 in the Brisbane River sub-catchment (showing only the land use changes > 85ha)

Land use code 1999	Land use class 1999	Land use code 2013	Land use class 2013	Area (ha)	Area Change (%)	Total change (%)
2.2.0	Production forestry	1.1.0	Nature conservation	23,262	3.33	43.40
2.2.0	Production forestry	1.2.0	Managed resource protection	5,533	0.79	10.32
2.1.0	Grazing native vegetation	1.2.0	Managed resource protection	5,186	0.74	9.67
3.3.0	Cropping	2.1.0	Grazing native vegetation	2,422	0.35	4.52
1.3.0	Other minimal use	5.4.0	Residential & farm infrastructure	1,862	0.27	3.47
2.1.0	Grazing native vegetation	3.1.0	Plantation forestry	1,862	0.27	3.47
1.3.0	Other minimal use	1.2.0	Managed resource protection	1,428	0.20	2.66
2.1.0	Grazing native vegetation	5.4.0	Residential & farm infrastructure	1,250	0.18	2.33
4.3.0	Irrigated cropping	2.1.0	Grazing native vegetation	972	0.14	1.81
2.1.0	Grazing native vegetation	4.3.0	Irrigated cropping	657	0.09	1.23
1.1.0	Nature conservation	1.2.0	Managed resource protection	641	0.09	1.20
1.3.0	Other minimal use	5.3.0	Manufacturing and industrial	632	0.09	1.18
1.3.0	Other minimal use	5.5.0	Services	500	0.07	0.93
3.2.0	Grazing modified pastures	2.1.0	Grazing native vegetation	477	0.07	0.89
2.1.0	Grazing native vegetation	3.3.0	Cropping	392	0.06	0.73
1.3.0	Other minimal use	1.1.0	Nature conservation	354	0.05	0.66
1.3.0	Other minimal use	3.6.0	Land in transition	339	0.05	0.63
4.5.0	Irrigated seasonal horticulture	2.1.0	Grazing native vegetation	339	0.05	0.63
2.1.0	Grazing native vegetation	3.6.0	Land in transition	244	0.03	0.46
2.2.0	Production forestry	1.3.0	Other minimal use	243	0.03	0.45
6.6.0	Estuary/coastal waters	3.6.0	Land in transition	233	0.03	0.44
1.2.0	Managed resource protection	1.1.0	Nature conservation	229	0.03	0.43
2.1.0	Grazing native vegetation	3.4.0	Perennial horticulture	220	0.03	0.41
1.3.0	Other minimal use	5.7.0	Transport and communication	203	0.03	0.38
3.6.0	Land in transition	5.4.0	Residential & farm infrastructure	193	0.03	0.36
3.3.0	Cropping	3.1.0	Plantation forestry	169	0.02	0.32
2.1.0	Grazing native vegetation	3.2.0	Grazing modified pastures	164	0.02	0.31
2.1.0	Grazing native vegetation	4.4.0	Irrigated perennial horticulture	161	0.02	0.30
5.8.0	Mining	3.6.0	Land in transition	157	0.02	0.29
2.1.0	Grazing native vegetation	4.5.0	Irrigated seasonal horticulture	137	0.02	0.25
1.3.0	Other minimal use	3.1.0	Plantation forestry	127	0.02	0.24
4.2.0	Irrigated modified pastures	4.3.0	Irrigated cropping	127	0.02	0.24
1.3.0	Other minimal use	2.1.0	Grazing native vegetation	123	0.02	0.23
4.3.0	Irrigated cropping	3.2.0	Grazing modified pastures	121	0.02	0.23
5.4.0	Residential & farm infrastructure	5.3.0	Manufacturing and industrial	110	0.02	0.21
4.3.0	Irrigated cropping	5.4.0	Residential & farm infrastructure	104	0.01	0.19
2.1.0	Grazing native vegetation	5.5.0	Services	102	0.01	0.19
3.6.0	Land in transition	5.5.0	Services	100	0.01	0.19
2.1.0	Grazing native vegetation	4.5.0	Irrigated plantation forestry	96	0.01	0.18
5.4.0	Residential & farm infrastructure	5.5.0	Services	92	0.01	0.17
2.1.0	Grazing native vegetation	1.3.0	Other minimal use	88	0.01	0.16
3.3.0	Cropping	4.2.0	Irrigated modified pastures	87	0.01	0.16
Total				53,606	7.67	100

Data format and availability

Download land use datasets

To access land use datasets it is recommended that the [Queensland Government Information Service](#) (QGIS) be used. Search for "**land use mapping**" in the type of data search after restricting your search to "**cadastral and land planning**" in the topic category field. Metadata is also available from QGIS.

The dataset comprises an ESRI vector geodatabase at a nominal scale of 1:50,000. Within this are three feature classes: 1999 improved land use, 2013 updated land use and 1999–2013 land use change layer. The feature classes are polygon datasets with attributes describing land use. Land use is classified according to the Australian Land Use and Management Classification (ALUMC) Version 7, May 2010. Note that a representation showing land use at secondary level is available when working within a geodatabase.

Digital Data is supplied with a licence and by using the data you confirm that you have read the licence conditions included with the data and that you agree to be bound by its terms.

This material is licensed under a [Creative Commons - Attribution 3.0 Australia](#) licence.



The Department of Science, Information Technology, Innovation and the Arts requests attribution in the following manner:

© State of Queensland (Department of Science, Information Technology, Innovation and the Arts) 2014. Updated data available at <http://dds.information.qld.gov.au/dds/>

Request a land use map

Available from the [QLUMP](#) website, it is possible to [request a land use map](#) based upon a specific location (Lot on Plan, Street address or Central latitude/longitude coordinates) in Queensland. The land use maps are emailed upon request in portable document format (PDF). The maps present the most recent land use information available at the secondary level of the Australian Land Use and Management (ALUM) Classification.

View land use on the Queensland Globe

The most recent land use information available state-wide in Queensland is available for viewing on the [Queensland Globe](#). This application allows browsing of Queensland spatial data including land use, maps and up-to-date satellite imagery.

Land use is available for viewing within the Planning and Cadastre category globe.

Appendix A Accuracy assessment

The accuracy assessment provided reference data suitable for assessing the 2012 land use map. For each of the sample points, the true land use class was independently determined (this provided the reference data) based on desktop interpretation of the same imagery and ancillary datasets available to the mapper. These points were then compared to the mapped class (map data) and the information summarised in the error matrix. The accuracy is summarised in terms of total accuracy, Kappa and user's and producer's accuracies. Each accuracy parameter is reported using a point estimate and a 95% posterior interval. Accuracy figures are provided as probabilities between 0 and 1.

Total accuracy provides an estimate of the overall accuracy of the map, and can be expressed as the probability that a point is mapped correctly. However, it should be kept in mind that total accuracy can be misleading, particularly when a dominant class exists. The Kappa statistic attempts to overcome this problem by adjusting for chance agreement. A common rule of thumb suggests a value of Kappa between 0.6 and 0.8 represents moderate agreement between the map and the ground truth, a value greater than 0.8 suggests strong agreement. Values less than 0.2 suggest the map is only marginally improved compared to a map produced by random allocation.

The user's and producer's accuracies summarise the map's accuracy on a per-class basis. User's accuracy for class A is the probability that a point mapped as A is truly in class A. If the user's accuracy of class A is estimated to be 0.84, then from a random sample of 100 points chosen from areas on the map in this class, approximately 84 would be found to be correct when checked in the field. Producer's accuracy for class B is the conditional probability that the map will show a site as class B given its true state is class B. If the producer's accuracy for class B were 0.84, then from a random sample of 100 points known to be in class B, approximately 84 would also be in class B according to the map. An accurate map should have both high user's and producer's accuracies.

The per-class estimates of accuracy are often not precise, since only part of the total sample points are used to estimate them. As a guide, if the upper bound of the interval for either user's or producer's accuracy is less than 0.5, this can indicate a true misclassification problem, rather than one due to inadequacies in sample size.

Points that differ between the map and the reference data may be due to positional or spatial errors. Inaccurate registration of datasets is an example of spatial error. Thematic errors are the incorrect labelling of an area due to difficulties in determining the true land use in that area, or by oversight or other operational errors. Spatial errors influence thematic accuracy. The purpose here is to assess the thematic accuracy of land use data. However, as described above, the separation of spatial and thematic errors can be difficult and was not undertaken. As a result, the accuracy assessment reflects properties of the land use data as a whole.

Note that the revised 1999 land use and the land use change dataset were not accuracy assessed.

2013 land use dataset

The 2013 land use dataset was accuracy assessed with 335 points based on a random sampling strategy, using the map classes (area and frequency) as the strata. The stratified estimate of total accuracy is 0.94 (0.89, 0.97) and Kappa is 0.91 (0.83, 0.95). As the lower bound of the confidence interval for total accuracy is greater than 0.8, the mapping meets the ACLUMP specification.

Table 4 (page 18) shows the error matrix for the accuracy assessment of the 2013 land use data. For the majority of classes, the reference data agreed with the map data. For example, *perennial horticulture* had 10 sample points identified. For seven of those points, the map data was also *perennial horticulture* and therefore correct. For three of those points the map data was incorrect, with two of those points falling onto the mapped class *irrigated perennial horticulture* and one of them falling onto the mapped class *residential and farm infrastructure*. The misclassification with regards to the *irrigated perennial horticulture* class is likely to be related to image interpretation or the accuracy of the ancillary data. The misclassification of horticultural land use features could be attributed to variations in interpretation of the minimum mapping unit (that is, only mapping individual features greater than two hectares in area). The horticultural land use class features within residential areas are often close to this threshold.

The column 'proportion' in Table 4 is the relative proportion in area of the classes that were assessed, not of the catchment as a whole. The areas of other classes that are not amenable to assessment, for example, *grazing modified pastures*, are removed from the total area before the proportions are calculated. This column will thus sum to 100%.

Table 5 (page 19) provides the user's and producer's accuracy for the 2013 Brisbane River land use dataset. This demonstrates that the majority of land use classes in the catchment have been mapped accurately. The largest assessable land use class in this catchment is *grazing native vegetation* which has been mapped with a very high user's and producer's accuracies of 0.978 and 0.997 respectively. The next largest class by area is *residential and farm infrastructure* which also returned a high user's and producer's accuracy. The error matrix (Table 4, page 18) provides more detail on the misclassifications.

Accuracy estimates based on samples with fewer than two points are not considered sufficiently reliable, and are presented as NA (not available) in the table. An example of this is *seasonal horticulture*.

The user's and producer's accuracy results should be interpreted individually for their respective classes. It should be noted that the classes with a small area in proportion to the total area assessed, and also a small sample size, will return a wide confidence interval. The overall accuracy shows a much tighter confidence interval as it effectively summarises the accuracy results for all the assessable classes.

Some classes with low accuracies have insufficient sample points to provide precise estimates. For example, the producer's accuracy for *reservoir/dam* is 0.972, however, from the 95% interval (0.611, 1.000) it can be seen that more sample points would be required to confidently determine how accurate this class is. Other classes with a relatively low accuracy and very large confidence intervals constitute a small proportion (<0.1%) of the area assessed.

Table 4: Error matrix for the Brisbane River sub-catchment 2013 land use dataset

		Reference data																																
2013 land use class		Nature conservation	Other conserved area	Managed resource protection	Other minimal use	Grazing native vegetation	Production forestry	Plantation forestry	Cropping	Perennial horticulture	Seasonal horticulture	Land in transition	Irrigated plantation forestry	Irrigated cropping	Irrigated perennial horticulture	Irrigated seasonal horticulture	Irrigated land in transition	Intensive horticulture	Intensive animal husbandry	Manufacturing and industrial	Residential & farm infrastructure	Services	Utilities	Transport & communications	Mining	Waste treatment and disposal	Lake	Reservoir/dam	River	Channel/aqueduct	Marsh/wetland	Total	Proportion (%)	
		Nature conservation		12	0	0	0	0	0	0	0	0	0	0	0	0	0	0	0	0	0	0	0	0	0	0	0	0	0	0	0	0	0	0
Other conserved area		0	3	0	0	0	0	0	0	0	0	0	0	0	0	0	0	0	0	0	0	0	0	0	0	0	0	0	0	0	0	0	3	1.62
Managed resource protection		0	0	14	0	0	0	0	0	0	0	0	0	0	0	0	0	0	0	0	0	0	1	0	0	0	0	0	0	0	0	0	15	1.97
Other minimal use		0	0	0	14	0	0	0	0	0	0	0	0	0	0	0	0	0	0	0	0	0	1	0	0	0	0	0	0	0	0	0	15	5.1
Grazing native vegetation		0	0	0	0	30	0	0	0	0	0	0	0	0	0	0	0	0	0	0	0	0	0	0	0	0	0	0	0	0	0	0	30	60.42
Production forestry		0	0	0	0	0	15	0	0	0	0	0	0	0	0	0	0	0	0	0	0	0	0	0	0	0	0	0	0	0	0	0	15	7.26
Plantation Forestry		0	0	0	0	0	0	15	0	0	0	0	0	0	0	0	0	0	0	0	0	0	0	0	0	0	0	0	0	0	0	0	15	3.25
Cropping		0	0	0	0	0	0	0	10	0	0	0	0	0	0	0	0	0	0	0	0	0	0	0	0	0	0	0	0	0	0	0	10	0.95
Perennial horticulture		0	0	0	0	0	0	0	0	7	0	0	0	0	2	0	0	0	0	0	0	1	0	0	0	0	0	0	0	0	0	0	10	0.14
Seasonal horticulture		0	0	0	0	0	0	0	0	0	1	0	0	0	0	0	0	0	0	0	0	0	0	0	0	0	0	0	0	0	0	0	1	0.00
Land in transition		0	0	0	0	0	0	0	0	0	0	8	0	0	1	0	0	0	0	0	0	1	0	0	0	0	0	0	0	0	0	0	10	0.2
Irrigated plantation forestry		0	0	0	0	0	0	0	0	0	0	0	1	0	0	0	0	0	0	0	0	0	0	0	0	0	0	0	0	0	0	0	1	0.03
Irrigated cropping		0	0	0	0	2	0	0	0	0	0	0	0	8	0	0	0	0	0	0	0	0	0	0	0	0	0	0	0	0	0	0	10	0.75
Irrigated perennial horticulture		0	0	0	0	0	0	0	0	0	0	0	0	0	10	0	0	0	0	0	0	0	0	0	0	0	0	0	0	0	0	0	10	0.1
Irrigated seasonal horticulture		0	0	0	0	0	0	0	0	0	0	1	0	0	0	9	0	0	0	0	0	0	0	0	0	0	0	0	0	0	0	0	10	0.29
Irrigated land in transition		0	0	0	0	0	0	0	0	0	0	0	0	0	0	0	1	0	0	0	0	0	0	0	0	0	0	0	0	0	0	0	1	0
Intensive horticulture		0	0	0	0	0	0	0	0	0	0	0	0	0	0	0	0	10	0	0	0	0	0	0	0	0	0	0	0	0	0	0	10	0.02
Intensive animal husbandry		0	0	0	0	0	0	0	0	0	0	0	0	0	0	0	0	0	9	0	0	1	0	1	0	0	0	0	0	0	0	0	10	0.05
Manufacturing and industrial		0	0	0	0	0	0	0	0	0	0	0	0	0	0	0	0	0	0	10	0	0	0	0	0	0	0	0	0	0	0	0	10	0.78
Residential & farm infrastructure		0	0	0	0	0	0	1	0	0	0	0	0	0	0	0	0	0	0	0	28	1	0	0	0	0	0	0	0	0	0	0	30	8.19
Services		0	0	0	0	0	0	0	0	0	0	0	0	0	0	0	0	0	0	0	0	29	0	0	0	1	0	0	0	0	0	0	30	1.72
Utilities		0	0	0	0	0	0	0	0	0	0	0	0	0	0	0	0	0	0	0	0	0	10	0	0	0	0	0	0	0	0	0	10	0.07
Transport and communications		0	0	0	0	0	0	0	0	0	0	0	0	0	0	0	0	0	0	0	0	0	0	10	0	0	0	0	0	0	0	0	10	0.37
Mining		0	0	0	0	0	0	0	0	0	0	0	0	0	0	0	0	0	0	0	0	0	0	0	0	10	0	0	0	0	0	0	10	0.12
Waste treatment and disposal		0	0	0	0	0	0	0	0	0	0	0	0	0	0	0	0	0	0	0	0	0	0	0	1	10	0	0	0	0	0	0	10	0.07
Lake		0	0	0	0	0	0	0	0	0	0	0	0	0	0	0	0	0	0	0	0	1	0	1	0	0	1	0	0	0	0	1	0	
Reservoir/dam		0	0	0	0	0	0	0	0	0	0	0	0	0	0	0	0	0	0	0	0	0	0	0	0	0	0	1	14	0	0	0	15	1.79
River		0	0	0	0	0	0	0	0	0	0	0	0	0	0	0	0	0	0	0	0	0	0	0	1	0	0	0	1	0	0	1	0.6	
Channel/aqueduct		0	0	0	0	0	0	0	0	0	0	0	0	0	0	0	0	0	0	0	0	0	0	0	0	0	0	0	0	10	0	0	10	0.02
Marsh/wetland		0	1	0	0	0	0	0	0	0	0	0	0	0	0	0	0	0	0	0	0	0	0	0	0	0	0	0	0	0	0	9	10	0.17
Total		12	4	14	14	32	15	15	11	7	1	9	1	8	13	9	1	10	9	10	30	32	11	10	10	11	2	14	1	10	9	335	100.00	

Table 5: User's and producer's accuracy for the Brisbane River sub-catchment 2013 land use dataset

Class	User's			Producer's		
	Estimate	95% interval		Estimate	95% interval	
Nature conservation	0.946	0.732	0.998	0.988	0.775	1.000
Other conserved area	0.805	0.304	0.993	0.950	0.515	1.000
Managed resource protection	0.893	0.683	0.986	0.974	0.636	1.000
Other minimal use	0.893	0.674	0.982	0.990	0.822	1.000
Grazing native vegetation	0.978	0.885	0.999	0.997	0.988	0.999
Production forestry	0.956	0.784	0.999	0.994	0.881	1.000
Plantation forestry	0.958	0.790	0.998	0.985	0.758	1.000
Cropping	0.934	0.692	0.998	0.737	0.370	0.970
Perennial horticulture	0.648	0.350	0.878	0.647	0.076	0.990
Seasonal horticulture	NA	NA	NA	NA	NA	NA
Land in transition	0.746	0.452	0.932	0.625	0.122	0.947
Irrigated plantation forestry	NA	NA	NA	NA	NA	NA
Irrigated cropping	0.744	0.454	0.935	0.917	0.330	0.999
Irrigated perennial horticulture	0.935	0.703	0.998	0.476	0.083	0.805
Irrigated seasonal horticulture	0.841	0.553	0.977	0.814	0.198	0.996
Irrigated land in transition	NA	NA	NA	NA	NA	NA
Intensive horticulture	0.937	0.704	0.998	0.290	0.021	0.963
Intensive animal husbandry	0.842	0.553	0.974	0.439	0.037	0.978
Manufacturing and industrial	0.936	0.708	0.998	0.934	0.390	0.999
Residential & farm infrastructure	0.911	0.780	0.980	0.990	0.877	0.998
Services	0.946	0.829	0.992	0.989	0.447	0.929
Utilities	0.946	0.703	0.998	0.245	0.052	0.765
Transport and communications	0.938	0.698	0.998	0.872	0.251	0.998
Mining	0.936	0.700	0.998	0.674	0.096	0.993
Waste treatment and disposal	0.936	0.696	0.998	0.338	0.059	0.832
Lake	NA	NA	NA	NA	NA	NA
Reservoir/dam	0.893	0.687	0.984	0.972	0.611	1.000
River	0.536	0.027	0.979	0.858	0.099	0.998
Channel/aqueduct	0.939	0.686	0.998	0.236	0.014	0.946
Marsh/wetland	0.839	0.565	0.974	0.735	0.119	0.995