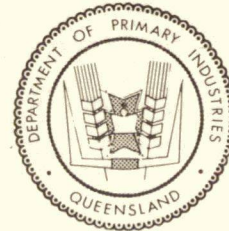
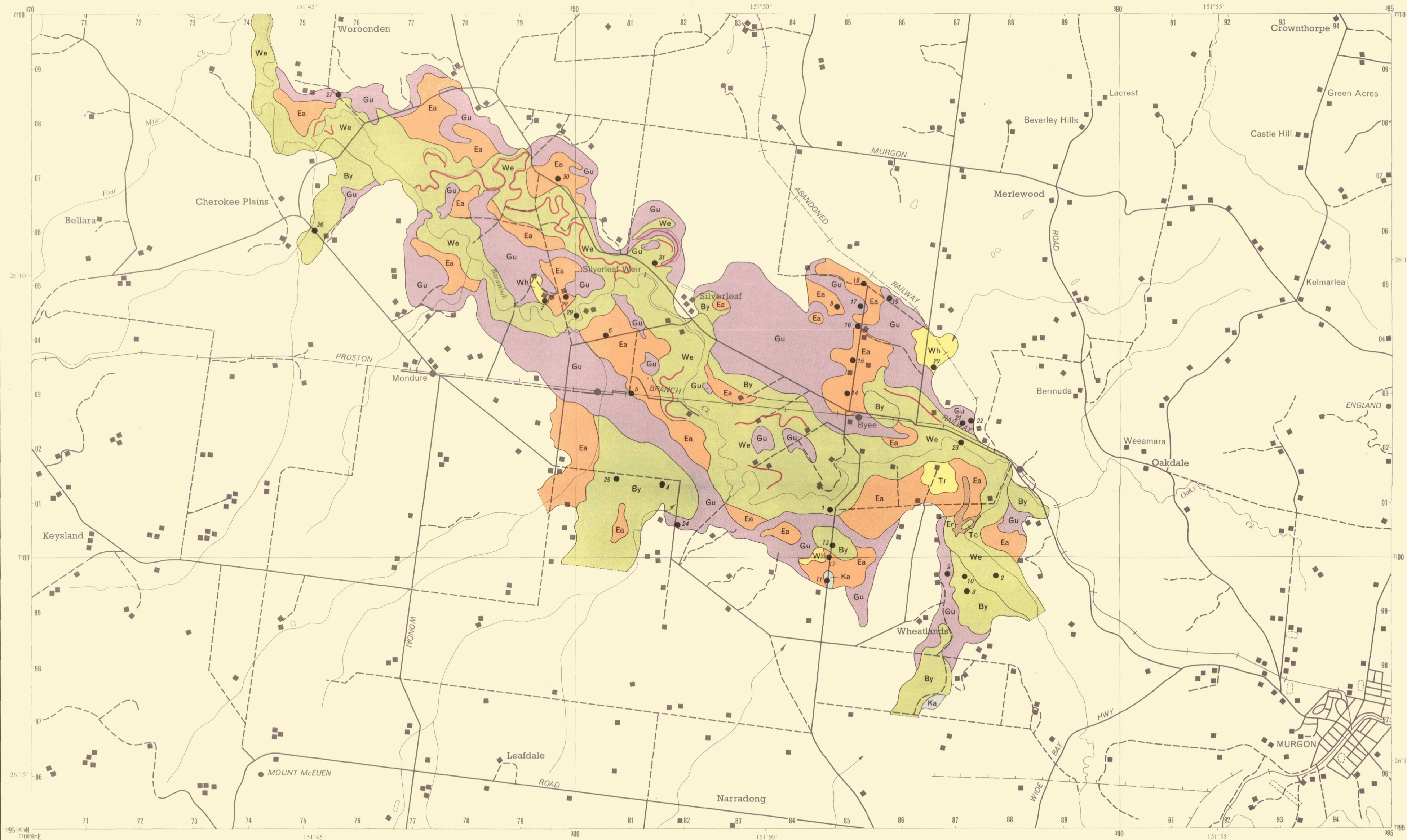


DISCLAIMER:
This is a scanned image and some details may be illegible or lost. While every care is taken to ensure the accuracy of this product, the Department of Natural Resources and Mines makes no representations or warranties about its accuracy, reliability, completeness or suitability for any particular purpose and disclaims all responsibility and all liability (including without limitation, liability in negligence) for all expenses, losses, damages (including indirect or consequential damages) and costs which you might incur as a result of the product being inaccurate or incomplete in any way for any reason.



QUEENSLAND
DEPARTMENT OF PRIMARY INDUSTRIES
**BARKER-BARAMBAH CREEK IRRIGATION FEASIBILITY STUDY
BYEE AREA**

SOILS

by R.E. Reid

SCALE 1:50 000



Drawn by S. Wallace

REFERENCE

Mapping Unit	Major Characteristics of Dominant Soils	Great Soil Group	Principal Profile Forms
SOILS OF THE HIGHER ALLUVIA			
Wh WHEATLANDS	Alkaline or neutral red or brown gradational or duplex soils.	No provision	Gn3.19, Gn3.16, Dr3.33, Gn3.25 Db1.33
Tr TREGEAR	Yellow mottled grey solodized solonetz with 15-40 cm of sandy loam to sandy clay loam A horizon.	Solodized solonetz	Dy3.43 Dy3.33
SOILS OF THE LOWER ALLUVIA			
Tc TERRACE	Dark hard setting sandy clay with neutral brown clay subsoil.	No provision	Ug5.15 Uf6.32
We WEIR	Dark hard setting to weakly self mulching light to light medium clay with alkaline brown clay subsoil, strongly alkaline by 90-120 cm.	Black earths	Ug5.15
By BYEE	Dark moderately self mulching medium clay with alkaline brown clay subsoil, strongly alkaline by 90-120 cm.	Black earths	Ug5.15
Ea EASTGATE	Dark or brown weakly self mulching to hard setting light medium to medium clay with alkaline brown clay subsoil, strongly alkaline by 30-60 cm.	Black earths, brown clays	Ug5.15 Ug5.34 Ug3.3
Gu QUEENA	Brown mottled grey moderately self mulching medium clay with alkaline grey clay subsoil, strongly alkaline by 90-150 cm.	Grey clays	Ug5.24 Ug5.28
Ka KABER	Brown weakly self mulching light medium clay with alkaline brown subsoil, strongly alkaline by 60-90 cm, moderate to large amounts iron-manganese nodules above 30 cm.	Brown clays	Ug5.34
Er	Eroded areas		

● Soil sampling sites.

— Apparent prior channel of Barambah Ck.

COMPILED by R.E. Reid, Agricultural Chemistry Branch, Department of Primary Industries, Kingaroy.
PREPARED by Drafting Section, Division of Land Utilisation, Department of Primary Industries, Brisbane.
PRINTED by the Government Printer, Brisbane, 1979.