

Agricultural Land Class

Brisbane River Catchment

Fernvale, Esk and Avoca Vale

South East Queensland



Map scale 1:75,000 when printed on A1 page

Coordinate system: Map Grid of Australia (MGA) zone 56, Geocentric Datum of Australia 1994 (GDA94)

Map produced by: Land Resources, Resource Assessment & Information, South Region, Service Delivery, DNRM July 2017

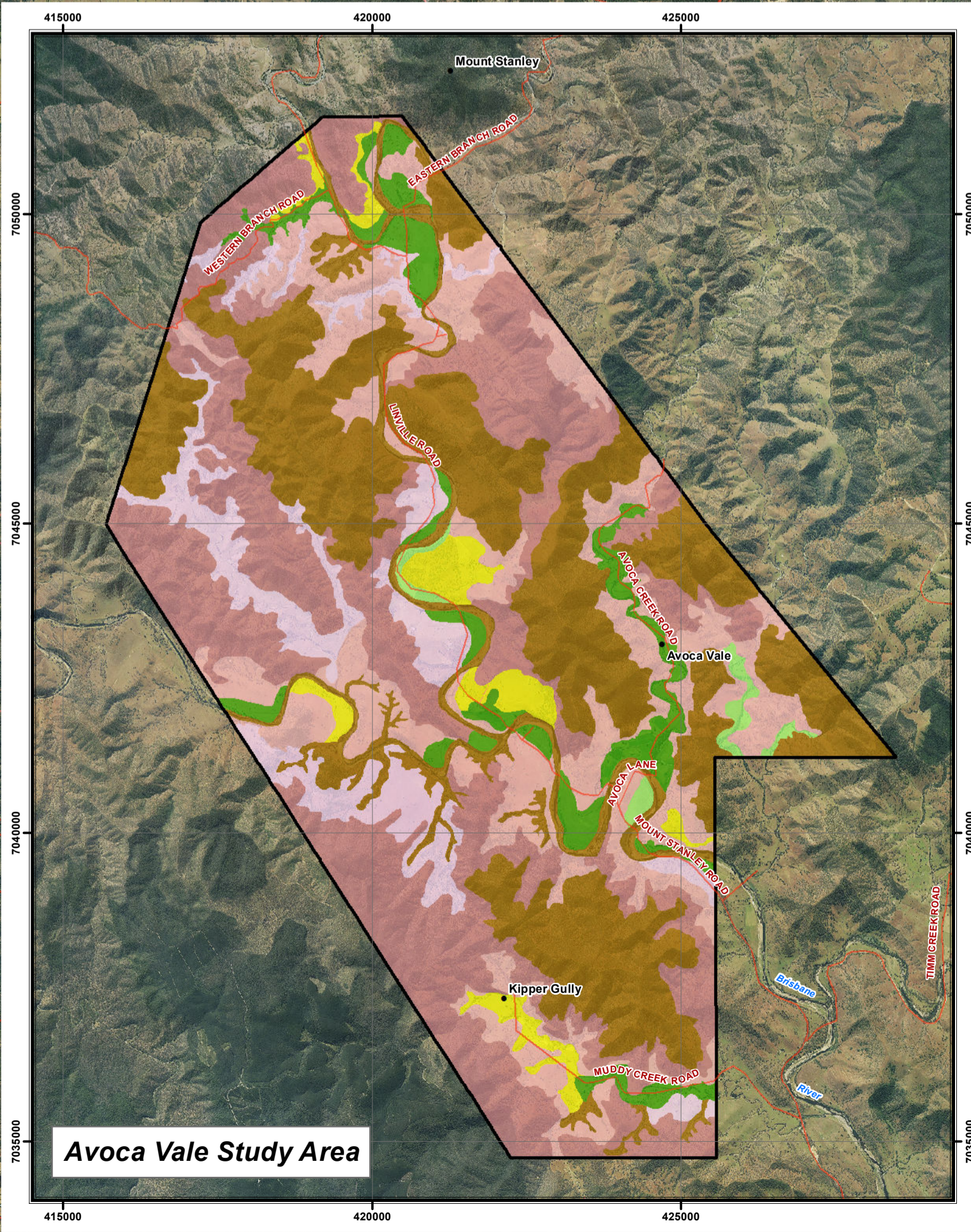
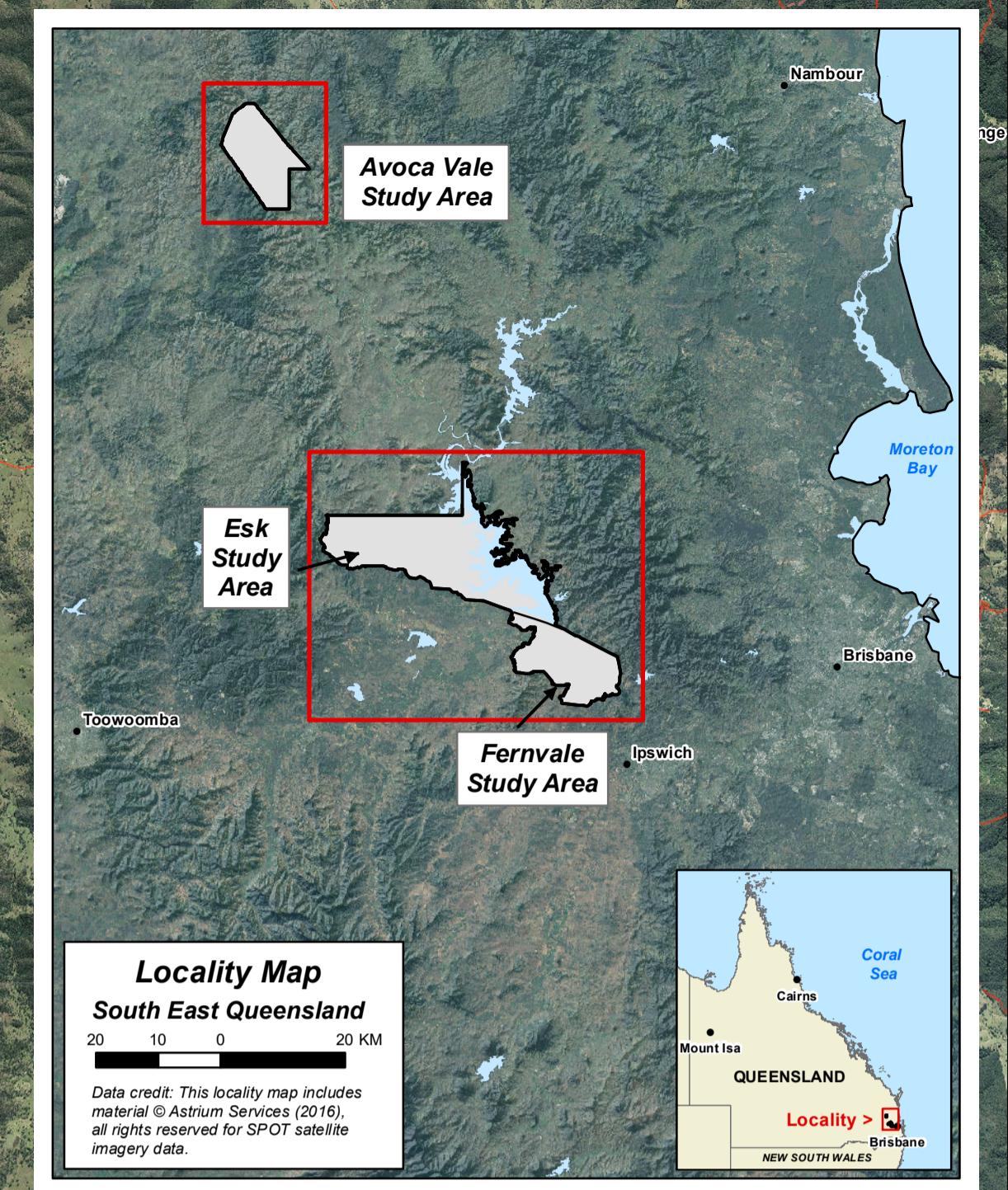
Spatial data sources: Baseline roads and tracks, place names (Queensland Place Names Database Gazetteer extract) and the SEQ Regional 2013 ortho-rectified image mosaic sourced from the Queensland Department of Natural Resources and Mines (DNRM).

DISCLAIMER: Whilst every care is taken to ensure the accuracy of this product, the Department of Natural Resources and Mines makes no representations or warranties about its accuracy, reliability, completeness, or suitability, for any particular purpose and disclaims all responsibility and all liability (including without limitation, liability in negligence) for all expenses, losses, damages (including indirect or consequential damage) and costs which the user may incur as a result of the product being in accurate or incomplete in any way for any reason.



Queensland Government

© The State of Queensland (Department of Natural Resources and Mines) 2017



Legend

Agricultural Land Class

CLASS A CROP LAND is suitable for a wide range of current and potential crops with nil to moderate limitations to production

- CLASS A1** land is suitable for a wide range of current and potential broadacre and horticultural crops.
- CLASS A2** land is suitable for a wide range of current and potential horticultural crops only.

CLASS B LIMITED CROP LAND suitable for a narrow range of current and potential crops.

- CLASS B** land is suitable for sown pastures and may be suitable for a wider range of crops with changes to knowledge, economics or technology

CLASS C PASTURE LAND is suitable only for improved pastures or native pastures due to limitations that preclude continuous cultivation for crop production. Some areas may tolerate a short period of ground disturbance for pasture establishment

- CLASS C1** land is suitable for grazing sown pastures requiring ground disturbance for establishment; or native pastures on higher fertility soils.
- CLASS C2** land is suitable for grazing native pastures with or without the introduction of pasture species and with lower fertility soils than C1.
- CLASS C3** land is suitable for light grazing of native pastures in accessible areas, and includes steep land more suited to forestry or catchment protection.

CLASS D NON-AGRICULTURAL LAND

- CLASS D** land is not suitable for agricultural use, including land alienated from agricultural use.

