

TransLink Customer Satisfaction Monthly Snapshot

January 2019

KPI	Bus	Train	Ferry	All
Safety & Security				
Safety at stops, stations and on board vehicles	81	77	88	80
Reliability & Frequency				
Ability to meet departure times, frequency of services and reliability of go card readers	69	70	79	70
Comfort				
Cleanliness, availability of seats, temperature on board, and facilities at stops and stations	77	71	82	75
Ease of Use				
Using and understanding ticketing including transferring between modes, purchasing, topping up and using go card, ease of finding stops	81	80	82	80
Ease of using go card sub-index				
Ease of purchasing and topping up a go card, managing a go card account and understanding information about the go card.	82	79	81	81
Proximity				
Convenience of available routes, distances from stops and stations and proximity of go card outlets	76	73	82	75
Efficiency				
Door-to-door travel time, connections with other services and avoidance of congestion	73	74	79	74
Information				
Ability to understand on board and at-station information, timetables, maps and journey planning information	71	72	80	72
Accessibility				
Ease of getting on and off the platform, and on and off the vehicles, and the reliability of escalators and elevators	81	79	87	81
Staff				
Knowledge, conduct, presentation and helpfulness of staff	81	82	91	82
Affordability				
Cost of tickets and benefits of not having to pay for parking	64	57	63	61
Overall Service				
A combination of all reported categories	74	72	82	74

Results shown are indices out of a possible 100. Satisfaction levels of 75 and above are classed as "best practice", while 60 and above is considered "satisfactory".

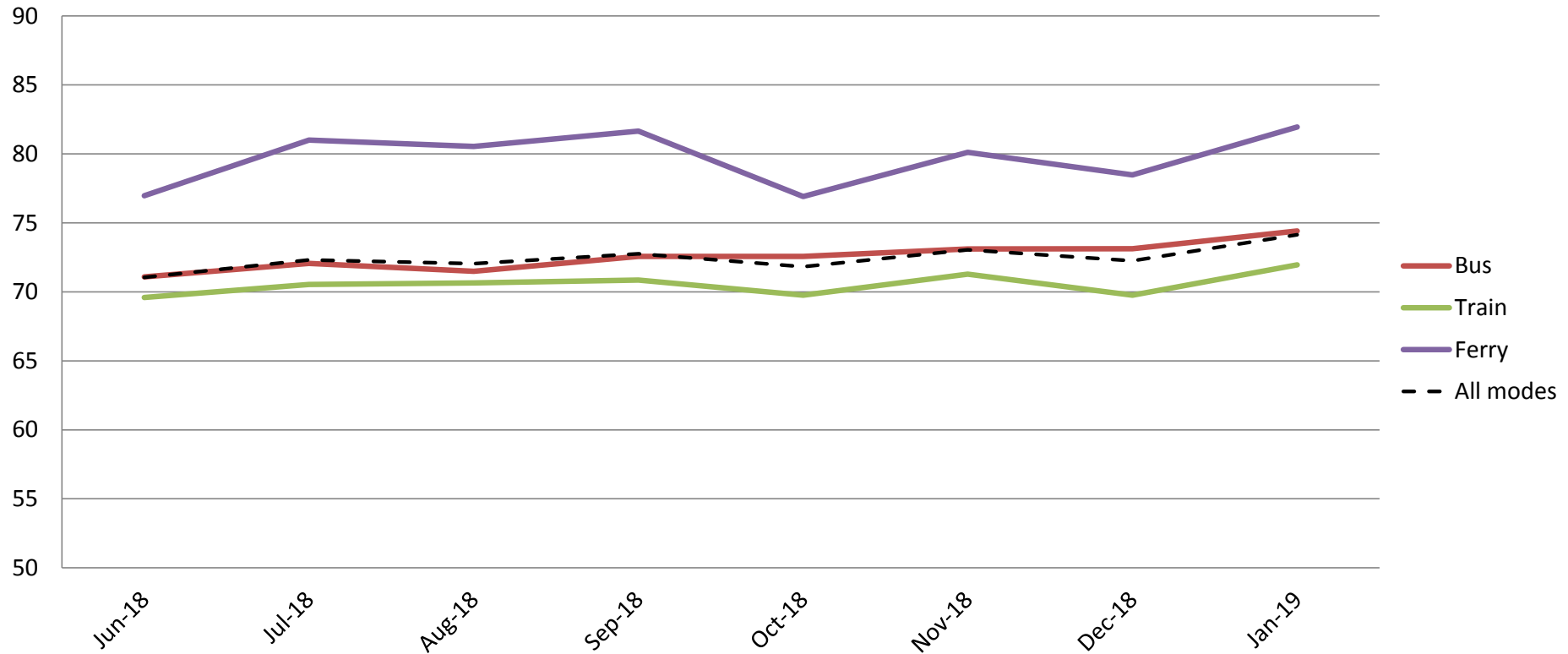
Red figures indicate a statistically significant **decrease** in the period
 Green figures indicate a statistically significant **increase** in the period

TransLink Patronage, Complaints and go card fixed fares Weekly Snapshot

Week ending	Passenger trips	Customer complaints (go card) per 10,000 trips	Customer complaints (other than go card) per 10,000 trips	go card Adjustments per 10,000 go card trips	Fixed fares as a percentage of all go card trips
4 February 2018	3,532,532	0.06	2.70	14.51	1.88%
11 February 2018	3,700,183	0.07	2.36	13.92	1.91%
18 February 2018	3,784,802	0.08	3.32	14.82	2.00%
25 February 2018	3,978,320	0.04	2.74	13.89	1.92%
4 March 2018	4,243,516	0.10	2.77	14.02	1.82%
11 March 2018	4,121,678	0.08	2.33	13.77	1.77%
18 March 2018	4,226,397	0.07	2.29	14.58	1.80%
25 March 2018	4,160,958	0.06	2.29	18.83	1.76%
1 April 2018	3,475,617	0.04	2.12	14.58	1.83%
8 April 2018	2,954,516	0.05	2.11	11.25	2.06%
15 April 2018	3,369,472	0.04	1.69	8.73	2.02%
22 April 2018	3,946,976	0.06	2.39	11.24	1.83%
29 April 2018	3,568,335	0.06	2.01	11.97	1.80%
6 May 2018	4,064,721	0.09	1.77	13.01	1.78%
13 May 2018	3,457,714	0.06	2.09	13.29	1.79%
20 May 2018	3,958,735	0.12	2.10	12.88	1.75%
27 May 2018	3,905,074	0.04	2.13	13.68	1.69%
3 June 2018	3,865,356	0.05	1.80	12.47	1.65%
10 June 2018	3,675,247	0.05	1.95	13.86	1.67%
17 June 2018	3,711,616	0.03	1.71	13.02	1.64%
24 June 2018	3,629,244	0.06	1.09	15.29	1.69%
1 July 2018	3,408,988	0.05	1.25	12.88	1.62%
8 July 2018	3,105,843	0.07	4.04	15.71	1.76%
15 July 2018	3,225,922	0.11	1.92	16.11	1.77%
22 July 2018	3,823,342	0.06	2.03	11.97	1.82%
29 July 2018	4,080,274	0.08	1.90	13.30	1.71%
5 August 2018	4,114,861	0.06	1.85	12.07	1.64%
12 August 2018	4,182,704	0.07	1.75	13.06	1.66%
19 August 2018	3,755,671	0.05	1.72	14.19	1.80%
26 August 2018	3,988,014	0.06	2.02	12.92	1.61%
2 September 2018	3,983,839	0.07	1.75	12.89	1.61%
9 September 2018	3,592,048	0.06	1.92	13.37	1.64%
16 September 2018	3,957,846	0.06	2.00	12.43	1.59%
23 September 2018	3,902,289	0.04	1.65	13.43	1.62%
30 September 2018	3,260,536	0.06	1.81	15.77	1.73%
7 October 2018	3,054,047	0.10	1.79	14.05	1.72%
14 October 2018	3,829,272	0.04	1.87	13.32	1.66%
21 October 2018	3,880,533	0.03	1.96	13.52	1.65%
28 October 2018	3,845,315	0.05	1.97	13.03	1.69%
4 November 2018	3,766,448	0.06	2.02	14.14	1.74%
11 November 2018	3,892,551	0.04	2.09	14.63	1.71%
18 November 2018	3,856,649	0.06	1.96	13.35	1.65%
25 November 2018	3,790,684	0.04	1.98	13.95	1.78%
2 December 2018	3,685,432	0.04	2.09	16.28	1.79%
9 December 2018	3,502,148	0.05	2.01	16.66	1.84%
16 December 2018	3,336,847	0.06	1.91	13.93	1.73%
23 December 2018	3,111,601	0.09	2.09	13.88	1.84%
30 December 2018	1,621,881	0.07	1.68	19.18	2.35%
6 January 2019	2,101,772	0.08	1.85	19.62	2.24%
13 January 2019	2,943,669	0.08	1.78	15.92	1.72%
20 January 2019	3,090,145	0.05	2.06	14.37	1.72%
27 January 2019	3,170,400	0.05	1.99	16.34	1.72%

Overall satisfaction – A combination of all reported categories

Index out of 100

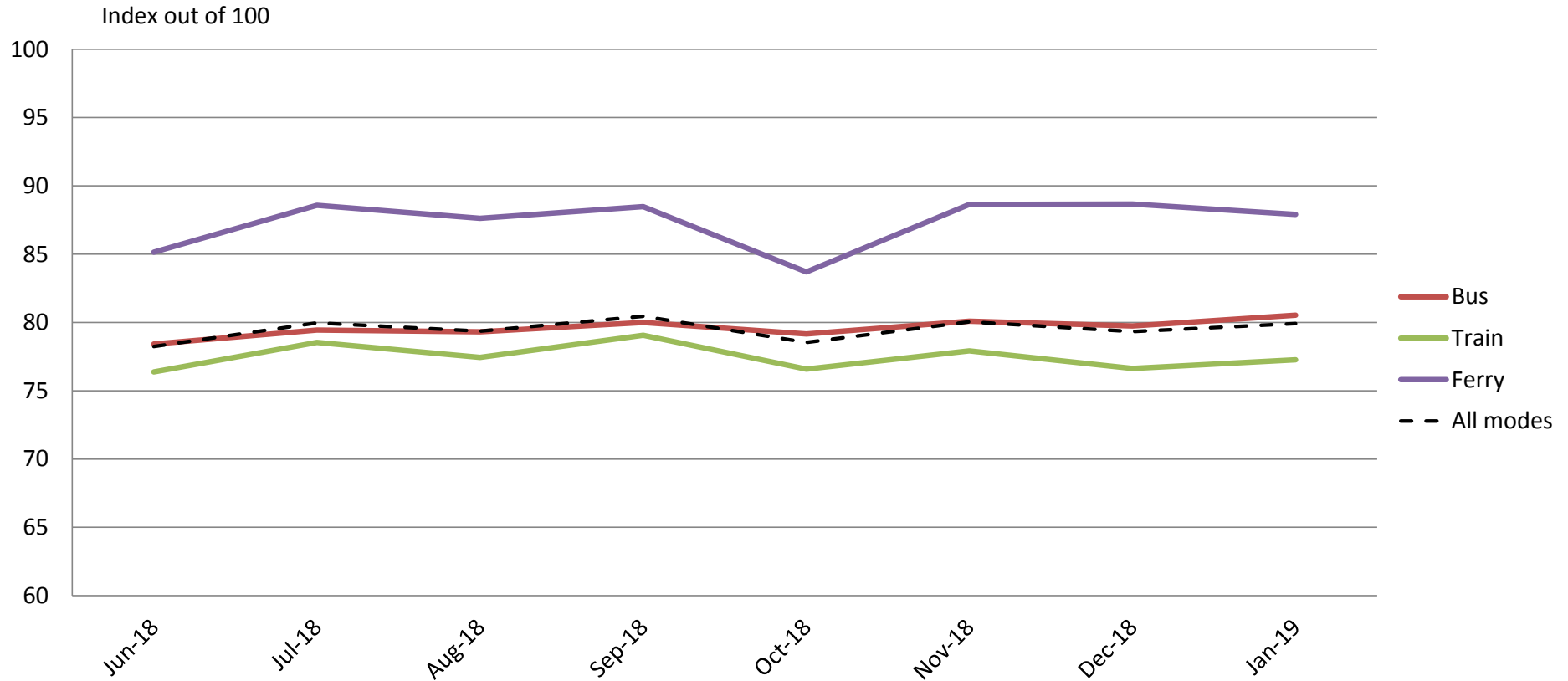


	Jun-18	Jul-18	Aug-18	Sep-18	Oct-18	Nov-18	Dec-18	Jan-19
Bus	71	72	71	73	73	73	73	74
Train	70	71	71	71	70	71	70	72
Ferry	77	81	81	82	77	80	78	82
All Modes	71	72	72	73	72	73	72	74

Results shown are indices out of a possible 100. Satisfaction levels of 75 and above are classed as "best practice", while 60 and above is considered "satisfactory".

Red figures indicate a statistically significant **decrease** in the period
 Green figures indicate a statistically significant **increase** in the period

Safety and Security – Safety at stops, stations and on board vehicles



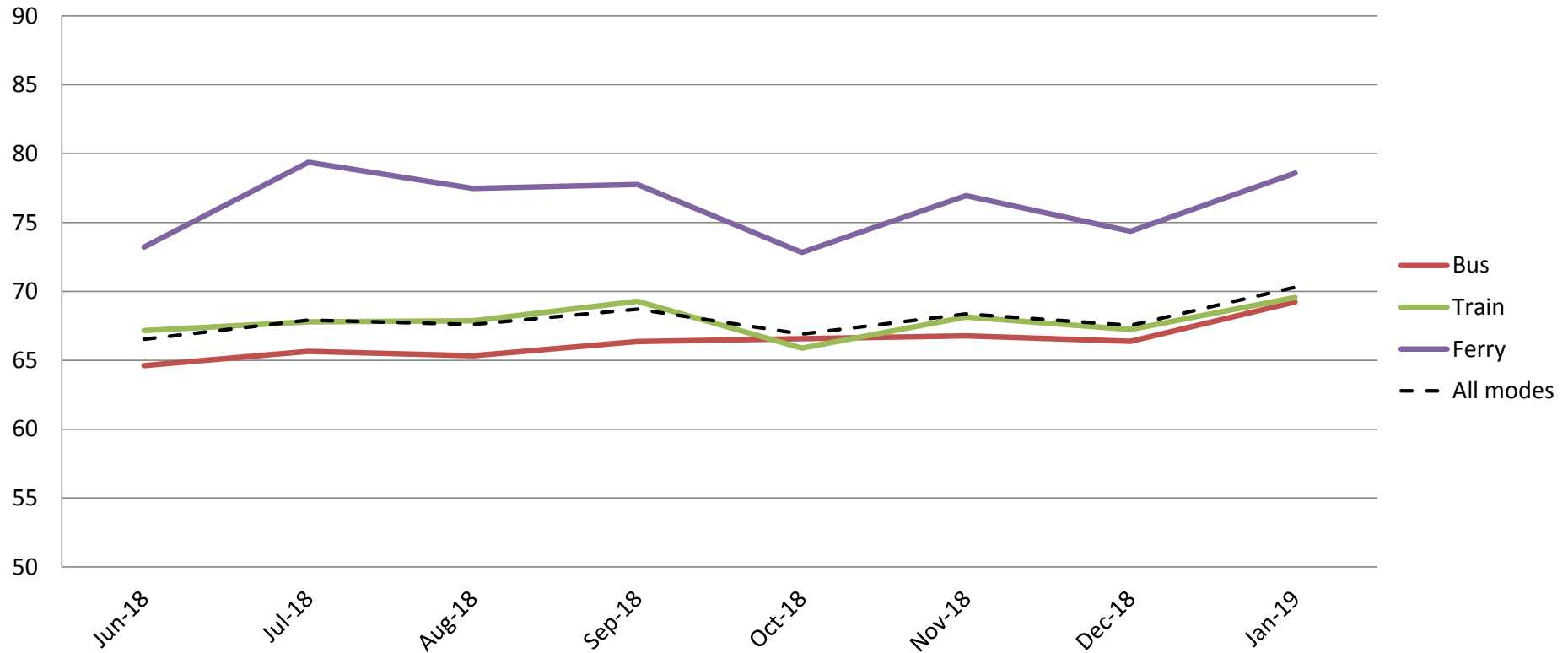
	Jun-18	Jul-18	Aug-18	Sep-18	Oct-18	Nov-18	Dec-18	Jan-19
Bus	78	79	79	80	79	80	80	81
Train	76	79	77	79	77	78	77	77
Ferry	85	89	88	88	84	89	89	88
All Modes	78	80	79	80	79	80	79	80

Results shown are indices out of a possible 100. Satisfaction levels of 75 and above are classed as "best practice", while 60 and above is considered "satisfactory".

Red figures indicate a statistically significant **decrease** in the period
 Green figures indicate a statistically significant **increase** in the period

Reliability and frequency – Ability to meet departure times, frequency of services and reliability of go card readers

Index out of 100



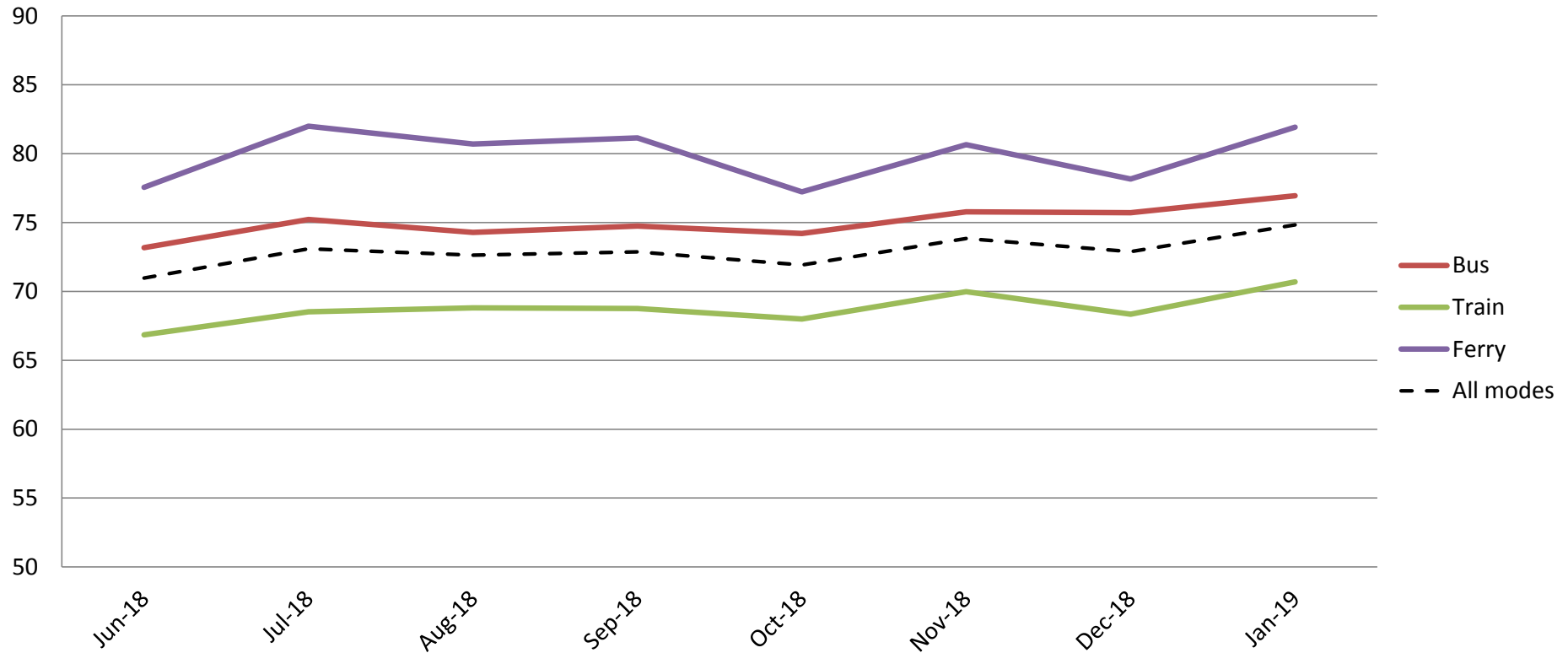
	Jun-18	Jul-18	Aug-18	Sep-18	Oct-18	Nov-18	Dec-18	Jan-19
Bus	65	66	65	66	67	67	66	69
Train	67	68	68	69	66	68	67	70
Ferry	73	79	77	78	73	77	74	79
All Modes	67	68	68	69	67	68	68	70

Results shown are indices out of a possible 100. Satisfaction levels of 75 and above are classed as "best practice", while 60 and above is considered "satisfactory".

Red figures indicate a statistically significant **decrease** in the period
 Green figures indicate a statistically significant **increase** in the period

Comfort – Cleanliness, availability of seats, temperature on board, and facilities at stops and stations

Index out of 100



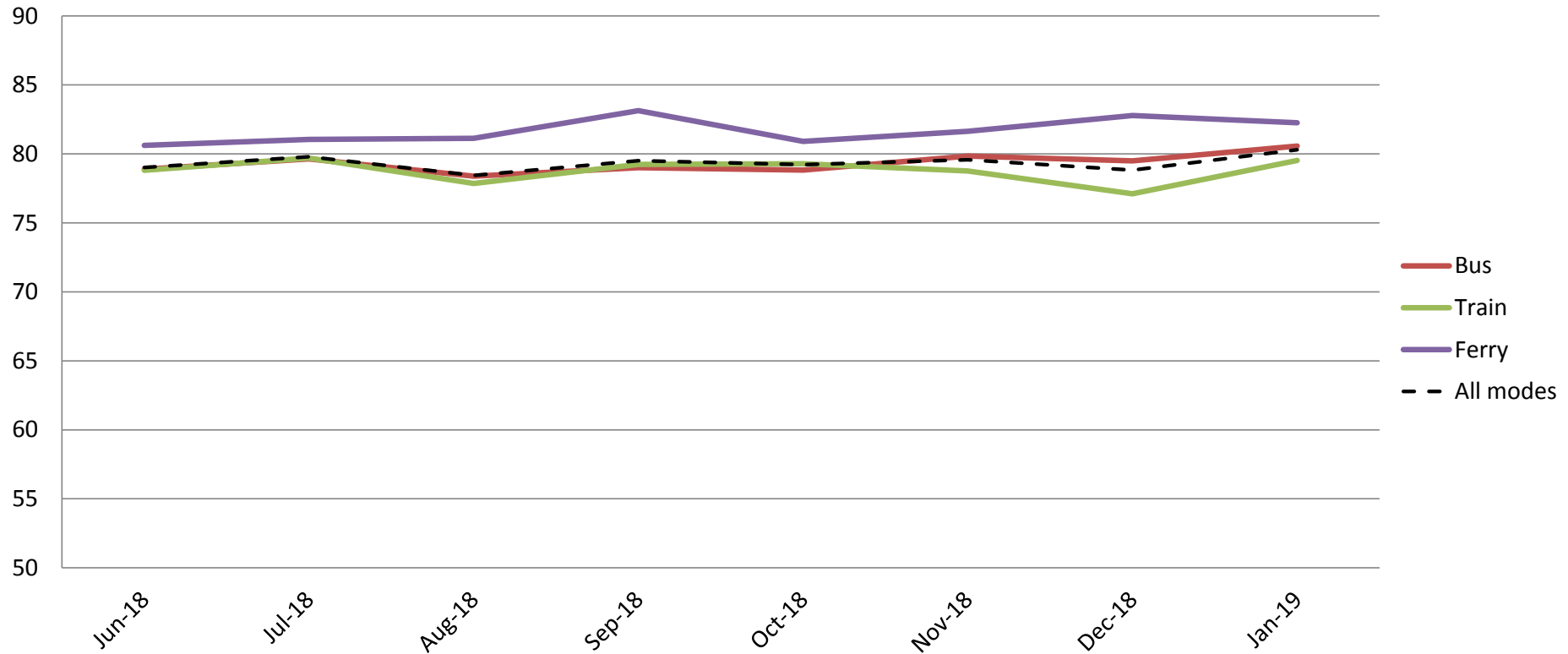
	Jun-18	Jul-18	Aug-18	Sep-18	Oct-18	Nov-18	Dec-18	Jan-19
Bus	73	75	74	75	74	76	76	77
Train	67	69	69	69	68	70	68	71
Ferry	78	82	81	81	77	81	78	82
All Modes	71	73	73	73	72	74	73	75

Results shown are indices out of a possible 100. Satisfaction levels of 75 and above are classed as "best practice", while 60 and above is considered "satisfactory".

Red figures indicate a statistically significant **decrease** in the period
 Green figures indicate a statistically significant **increase** in the period

Ease of use – Using and understanding ticketing including transferring between modes, purchasing, topping up and using go card, ease of finding stops

Index out of 100



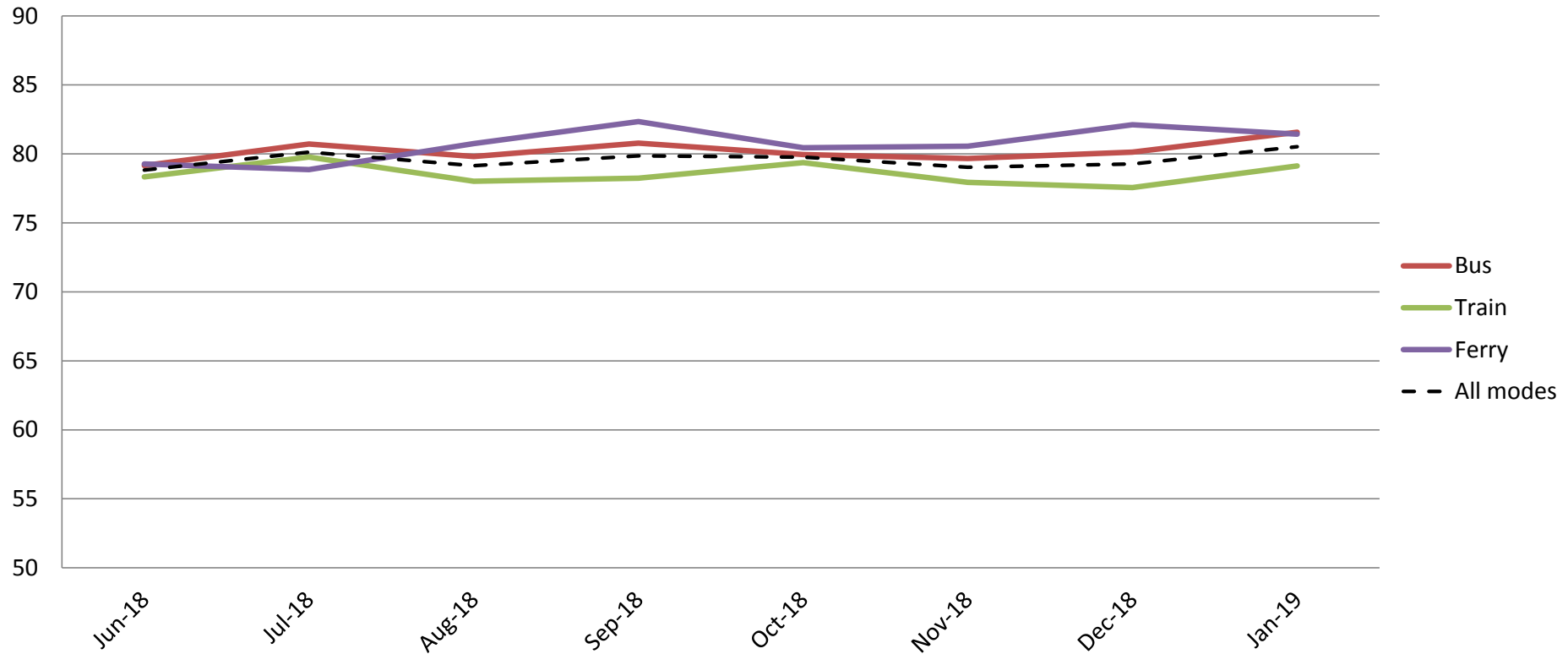
	Jun-18	Jul-18	Aug-18	Sep-18	Oct-18	Nov-18	Dec-18	Jan-19
Bus	79	80	78	79	79	80	79	81
Train	79	80	78	79	79	79	77	80
Ferry	81	81	81	83	81	82	83	82
All Modes	79	80	78	80	79	80	79	80

Results shown are indices out of a possible 100. Satisfaction levels of 75 and above are classed as "best practice", while 60 and above is considered "satisfactory".

Red figures indicate a statistically significant decrease in the period
 Green figures indicate a statistically significant increase in the period

Ease of use of go card – Ease of purchasing and topping up a go card, managing a go card account and understanding information about the go card.

Index out of 100



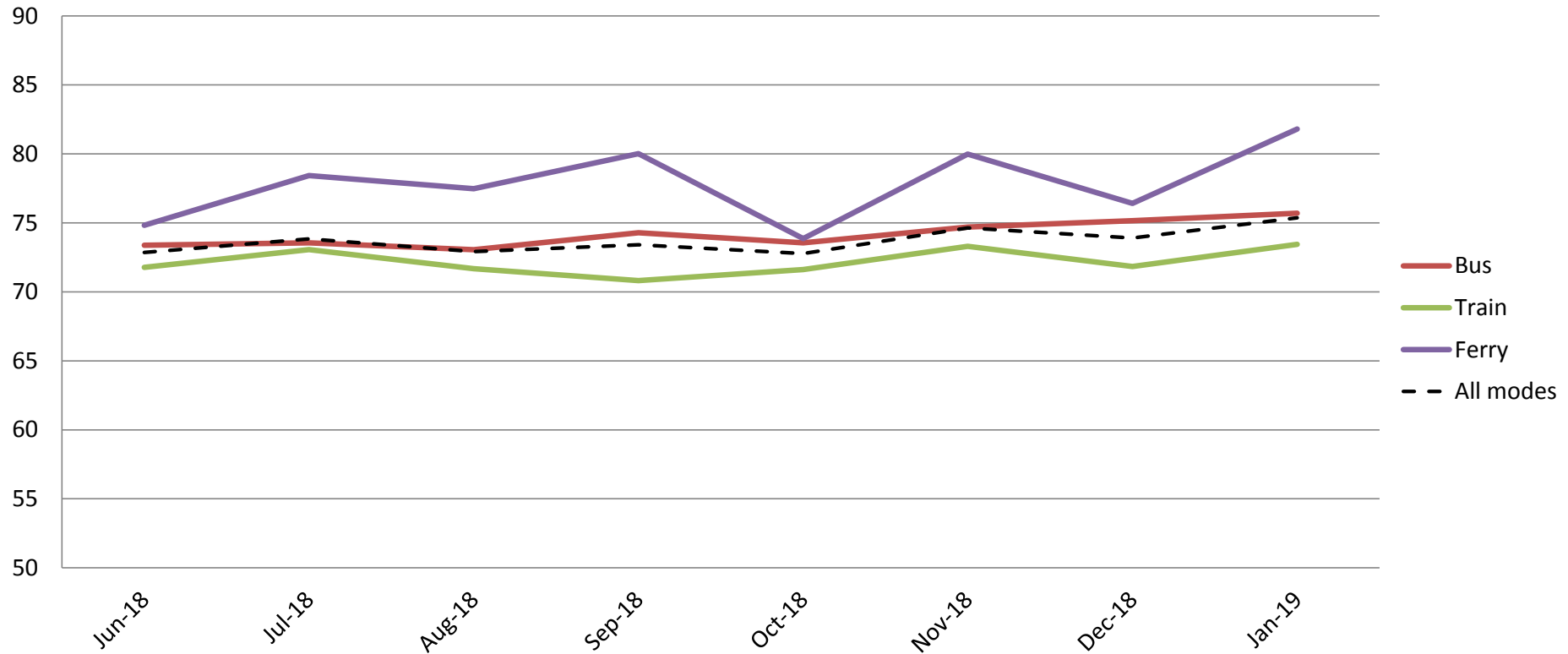
	Jun-18	Jul-18	Aug-18	Sep-18	Oct-18	Nov-18	Dec-18	Jan-19
Bus	79	81	80	81	80	80	80	82
Train	78	80	78	78	79	78	78	79
Ferry	79	79	81	82	80	81	82	81
All Modes	79	80	79	80	80	79	79	81

Results shown are indices out of a possible 100. Satisfaction levels of 75 and above are classed as "best practice", while 60 and above is considered "satisfactory".

Red figures indicate a statistically significant **decrease** in the period
 Green figures indicate a statistically significant **increase** in the period

Proximity – Convenience of available routes, distances from stops and stations and proximity of go card outlets

Index out of 100



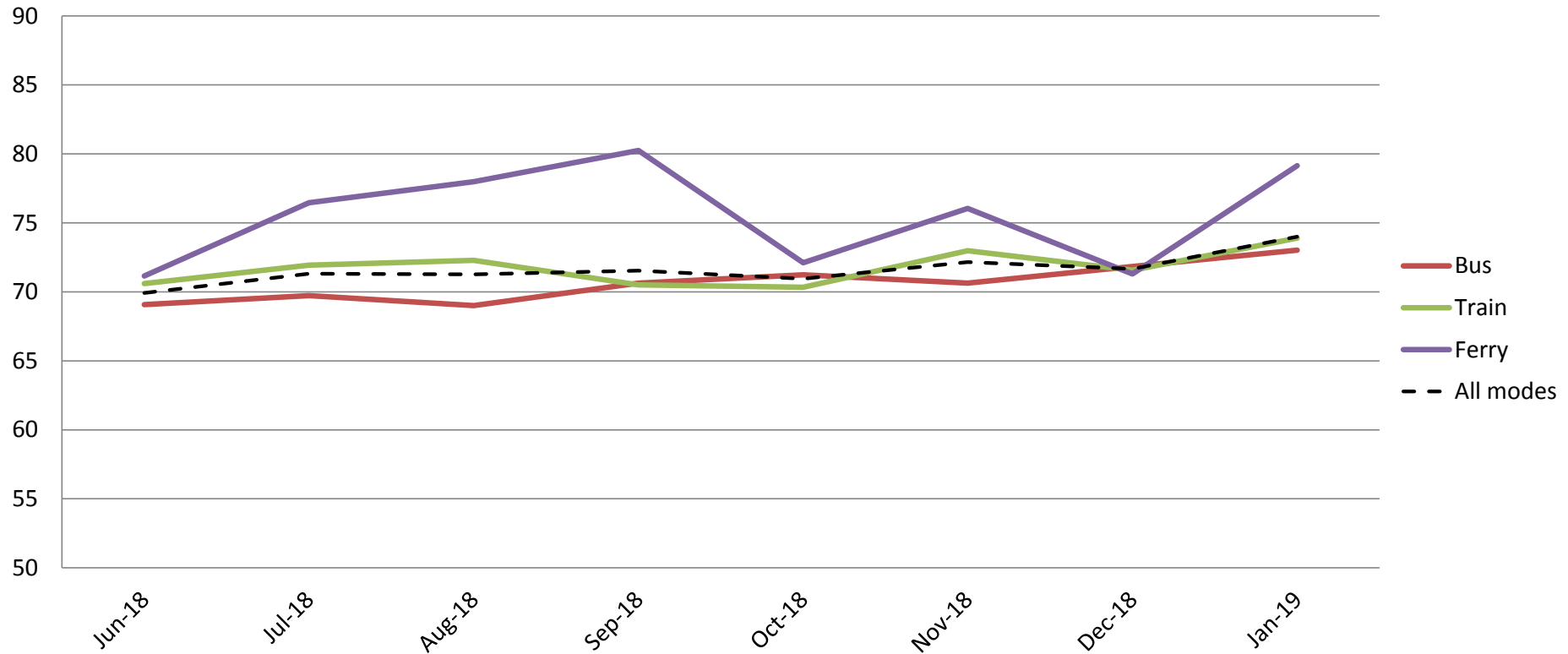
	Jun-18	Jul-18	Aug-18	Sep-18	Oct-18	Nov-18	Dec-18	Jan-19
Bus	73	74	73	74	74	75	75	76
Train	72	73	72	71	72	73	72	73
Ferry	75	78	77	80	74	80	76	82
All Modes	73	74	73	73	73	75	74	75

Results shown are indices out of a possible 100. Satisfaction levels of 75 and above are classed as "best practice", while 60 and above is considered "satisfactory".

Red figures indicate a statistically significant **decrease** in the period
 Green figures indicate a statistically significant **increase** in the period

Efficiency – Door-to-door travel time, connections with other services and avoidance of congestion

Index out of 100



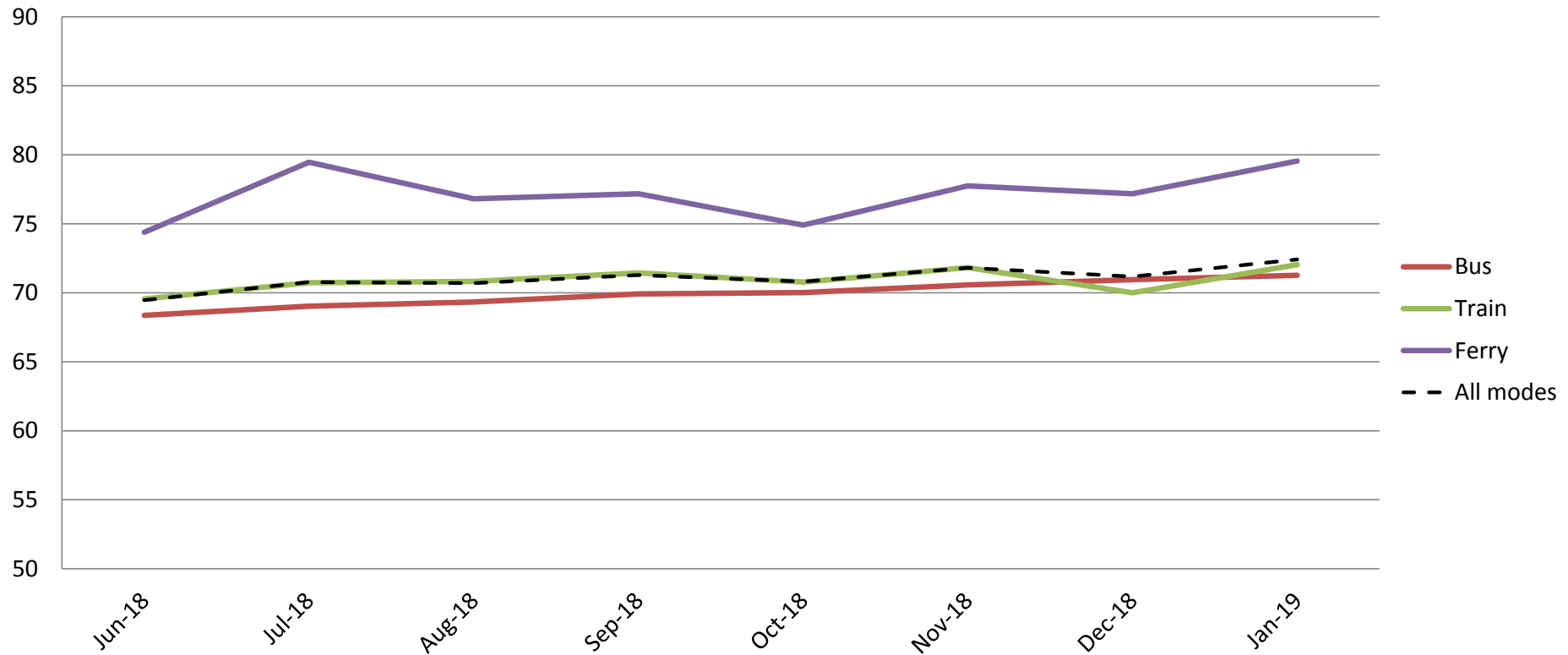
	Jun-18	Jul-18	Aug-18	Sep-18	Oct-18	Nov-18	Dec-18	Jan-19
Bus	69	70	69	71	71	71	72	73
Train	71	72	72	71	70	73	72	74
Ferry	71	76	78	80	72	76	71	79
All Modes	70	71	71	72	71	72	72	74

Results shown are indices out of a possible 100. Satisfaction levels of 75 and above are classed as "best practice", while 60 and above is considered "satisfactory".

Red figures indicate a statistically significant decrease in the period
 Green figures indicate a statistically significant increase in the period

Information – Ability to understand on board and at-station information, timetables, maps and journey planning information

Index out of 100



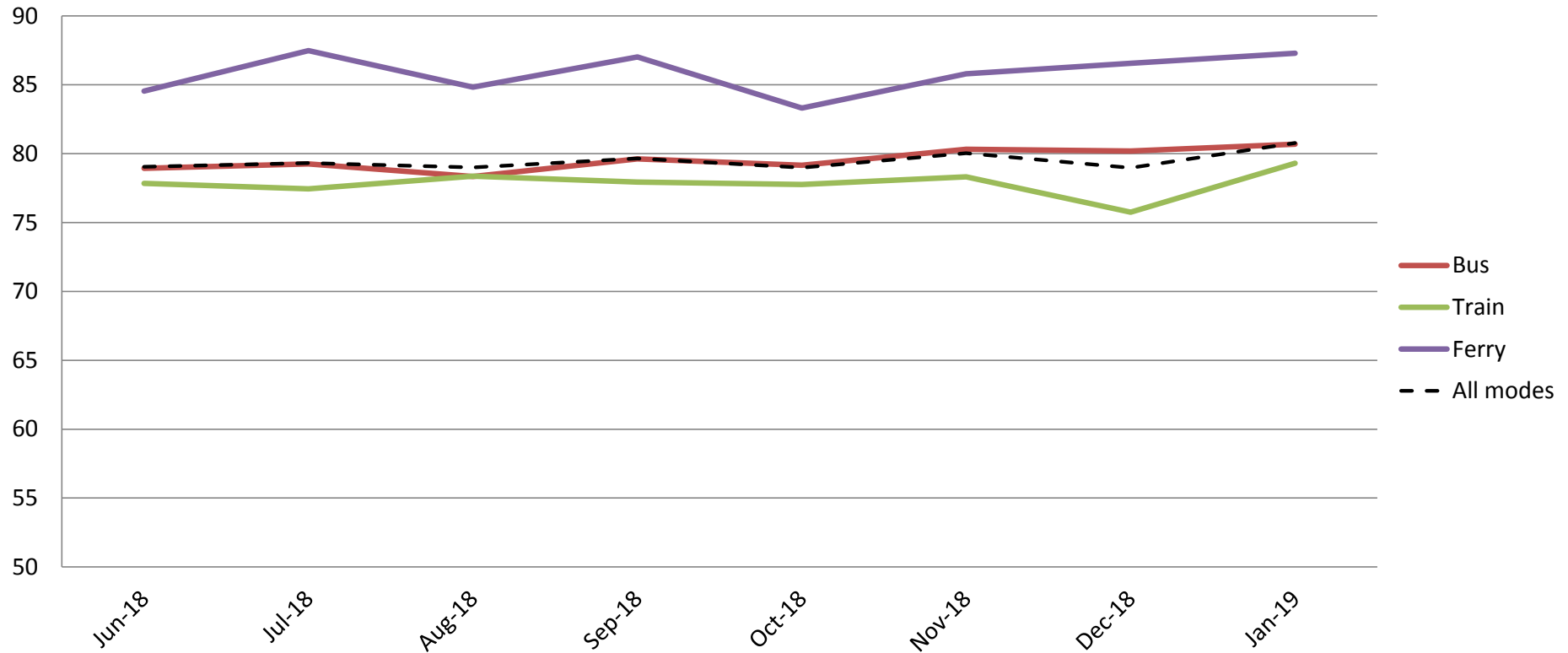
	Jun-18	Jul-18	Aug-18	Sep-18	Oct-18	Nov-18	Dec-18	Jan-19
Bus	68	69	69	70	70	71	71	71
Train	70	71	71	71	71	72	70	72
Ferry	74	79	77	77	75	78	77	80
All Modes	69	71	71	71	71	72	71	72

Results shown are indices out of a possible 100. Satisfaction levels of 75 and above are classed as "best practice", while 60 and above is considered "satisfactory".

Red figures indicate a statistically significant **decrease** in the period
 Green figures indicate a statistically significant **increase** in the period

Accessibility – Ease of getting on and off the platform, and on and off the vehicles, and the reliability of escalators and elevators

Index out of 100

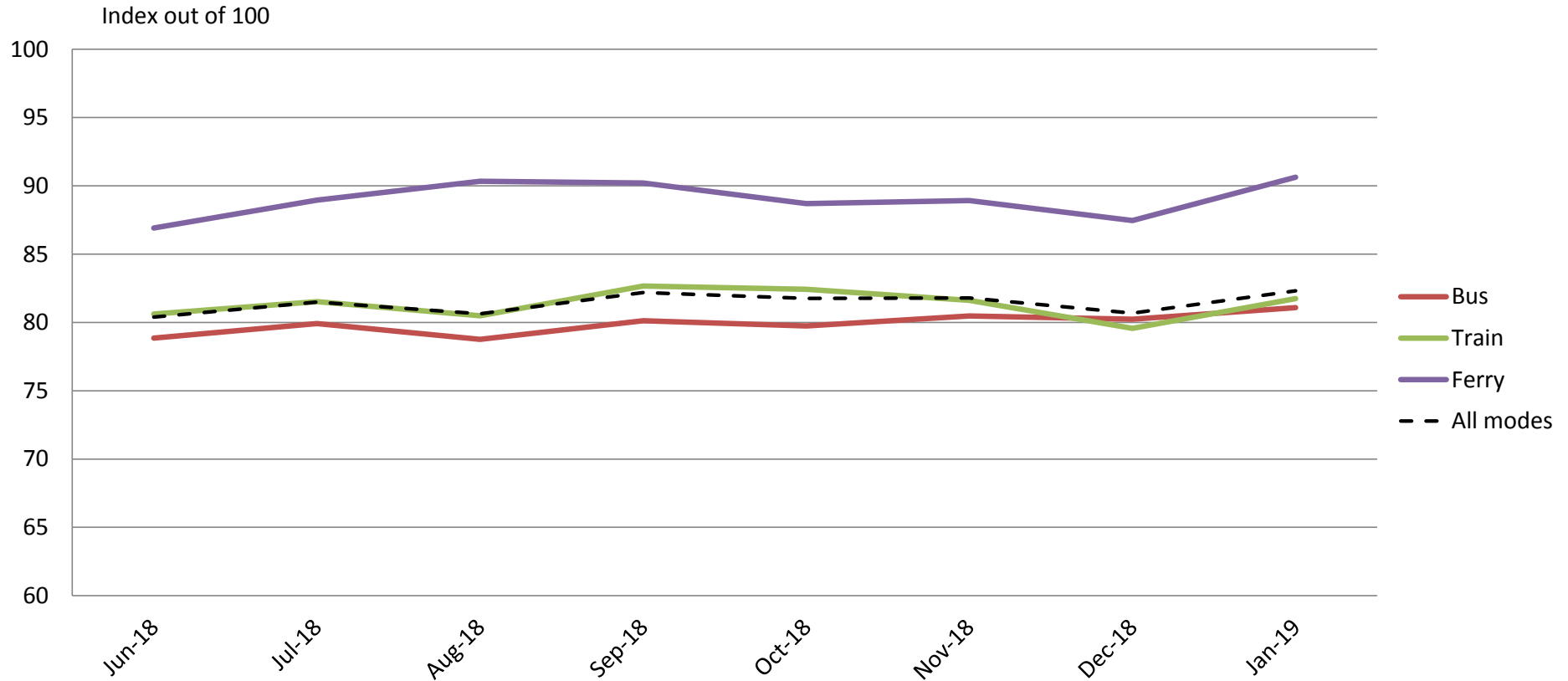


	Jun-18	Jul-18	Aug-18	Sep-18	Oct-18	Nov-18	Dec-18	Jan-19
Bus	79	79	78	80	79	80	80	81
Train	78	77	78	78	78	78	76	79
Ferry	85	87	85	87	83	86	87	87
All Modes	79	79	79	80	79	80	79	81

Results shown are indices out of a possible 100. Satisfaction levels of 75 and above are classed as "best practice", while 60 and above is considered "satisfactory".

Red figures indicate a statistically significant **decrease** in the period
 Green figures indicate a statistically significant **increase** in the period

Staff – Knowledge, conduct, presentation and helpfulness of staff



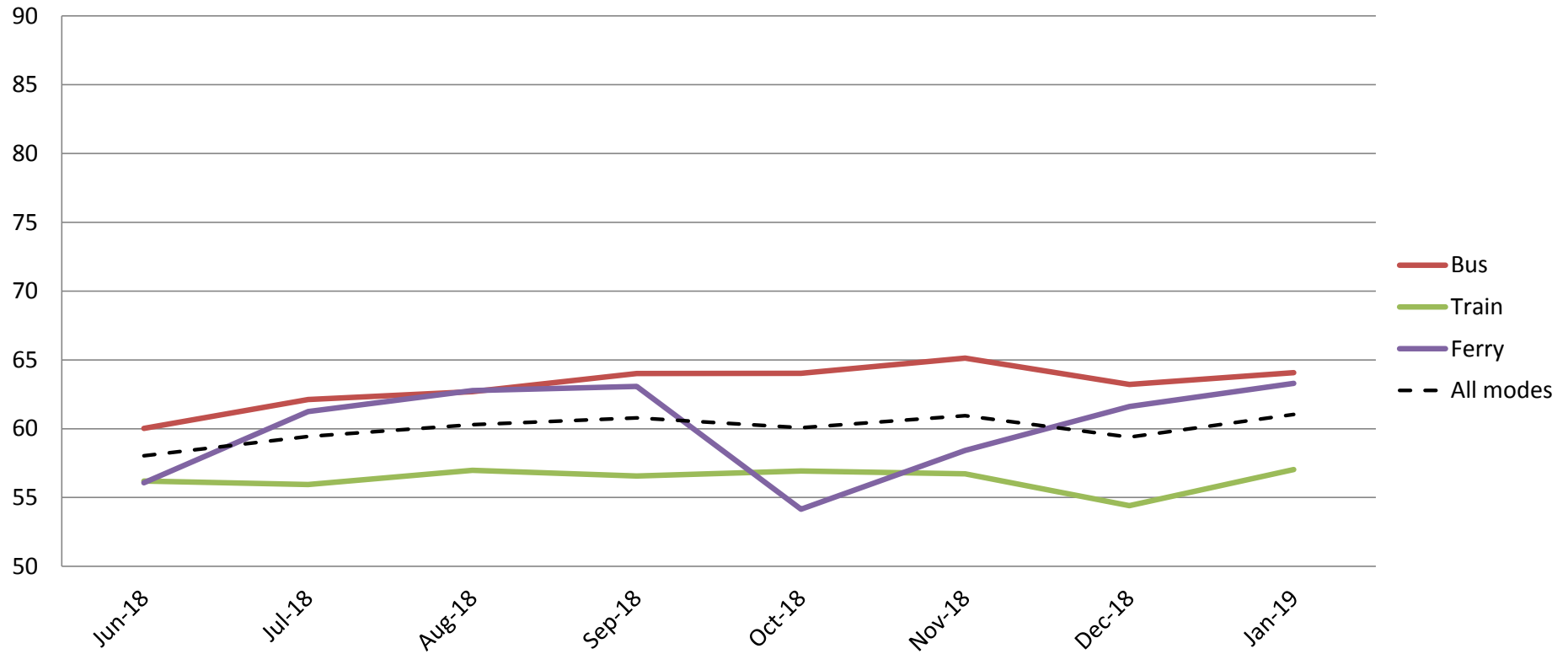
	Jun-18	Jul-18	Aug-18	Sep-18	Oct-18	Nov-18	Dec-18	Jan-19
Bus	79	80	79	80	80	80	80	81
Train	81	82	80	83	82	82	80	82
Ferry	87	89	90	90	89	89	87	91
All Modes	80	81	81	82	82	82	81	82

Results shown are indices out of a possible 100. Satisfaction levels of 75 and above are classed as "best practice", while 60 and above is considered "satisfactory".

Red figures indicate a statistically significant **decrease** in the period
 Green figures indicate a statistically significant **increase** in the period

Affordability – Cost of tickets and benefits of not having to pay for parking

Index out of 100



	Jun-18	Jul-18	Aug-18	Sep-18	Oct-18	Nov-18	Dec-18	Jan-19
Bus	60	62	63	64	64	65	63	64
Train	56	56	57	57	57	57	54	57
Ferry	56	61	63	63	54	58	62	63
All Modes	58	59	60	61	60	61	59	61

Results shown are indices out of a possible 100. Satisfaction levels of 75 and above are classed as "best practice", while 60 and above is considered "satisfactory".

Red figures indicate a statistically significant **decrease** in the period
 Green figures indicate a statistically significant **increase** in the period