

Maritime Safety Queensland



Baxters Jetty, Shorncliffe

Beacon to Beacon Guide

Moreton Bay

Published by

Maritime Safety Queensland

© Copyright The State of Queensland
(Department of Transport and Main Roads) 2018



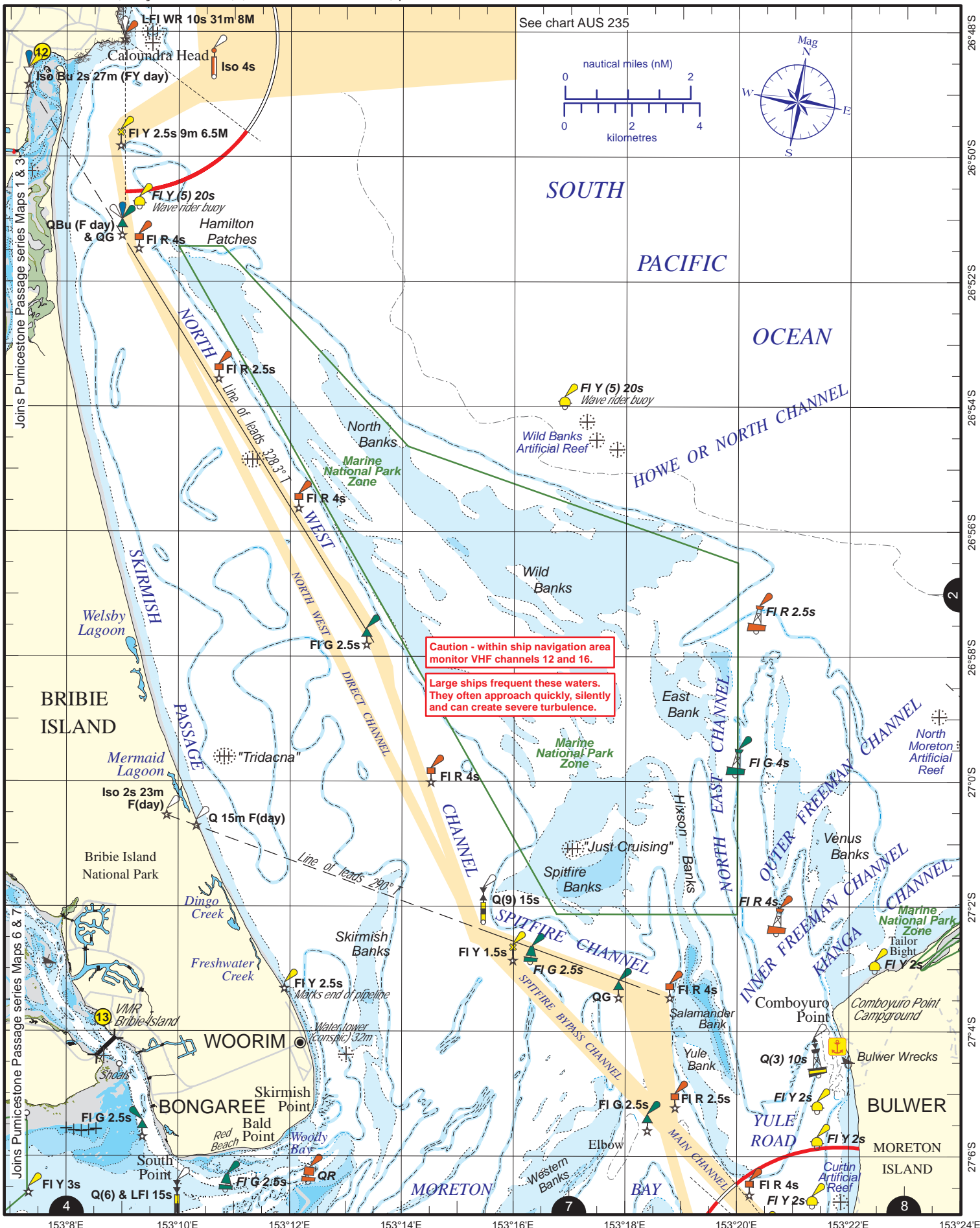
To view a copy of this licence, visit
<https://creativecommons.org/licenses/by/4.0/>

For commercial use terms and conditions

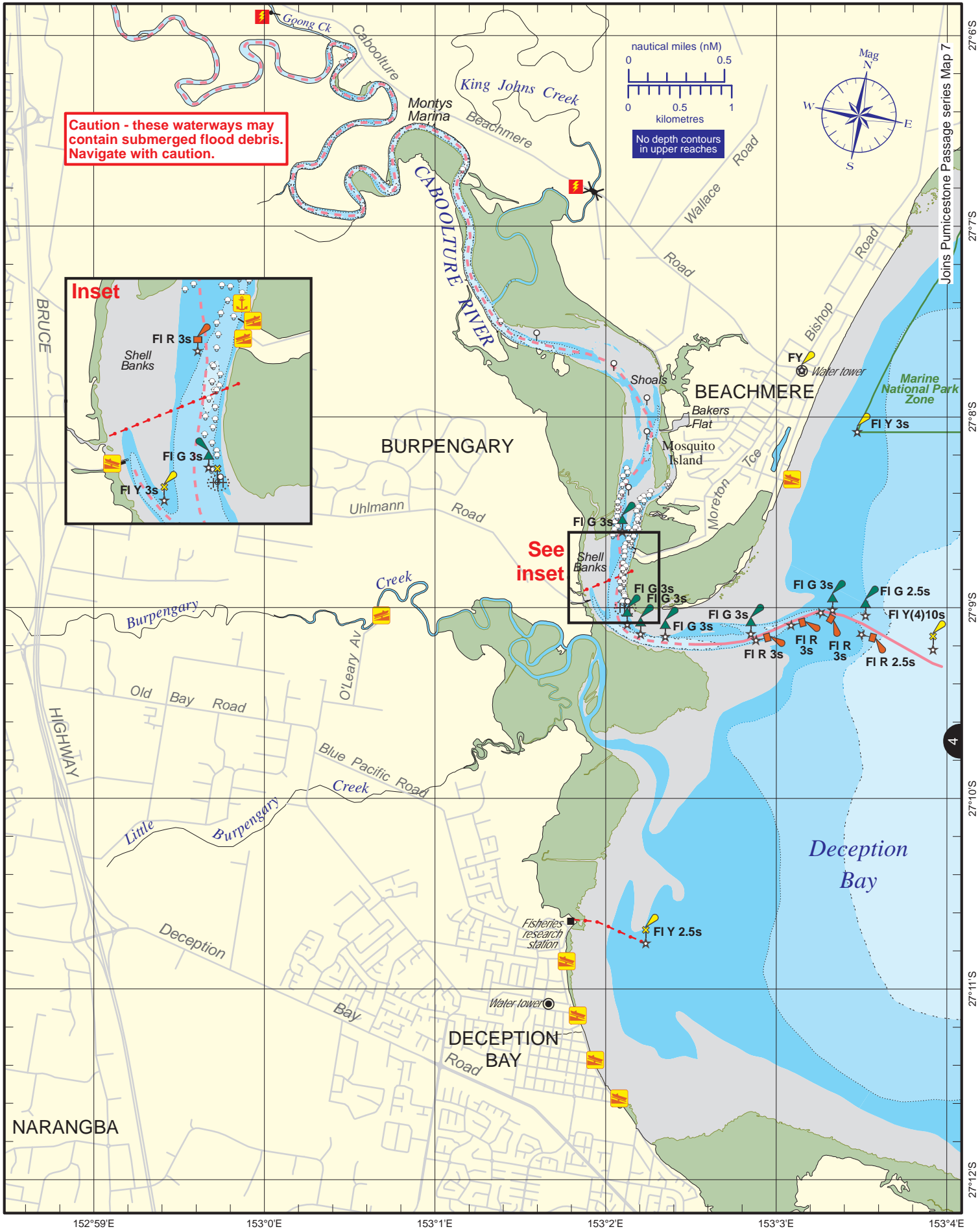
Please visit the Maritime Safety Queensland website at www.msq.qld.gov.au

'How to' use this guide

Use this Beacon to Beacon Guide with the 'How to' and legend booklet available from www.msq.qld.gov.au



Caution - within ship navigation area monitor VHF channels 12 and 16.
 Large ships frequent these waters. They often approach quickly, silently and can create severe turbulence.



Always keep a proper lookout when boating.

Look up and live for power and cable crossings that may not be shown on these maps due to scale or recent construction.

CAUTION: depth contours have not been re-surveyed in most areas since the 2011 and 2013 floods.

Exercise care when travelling outside suggested navigation tracks.

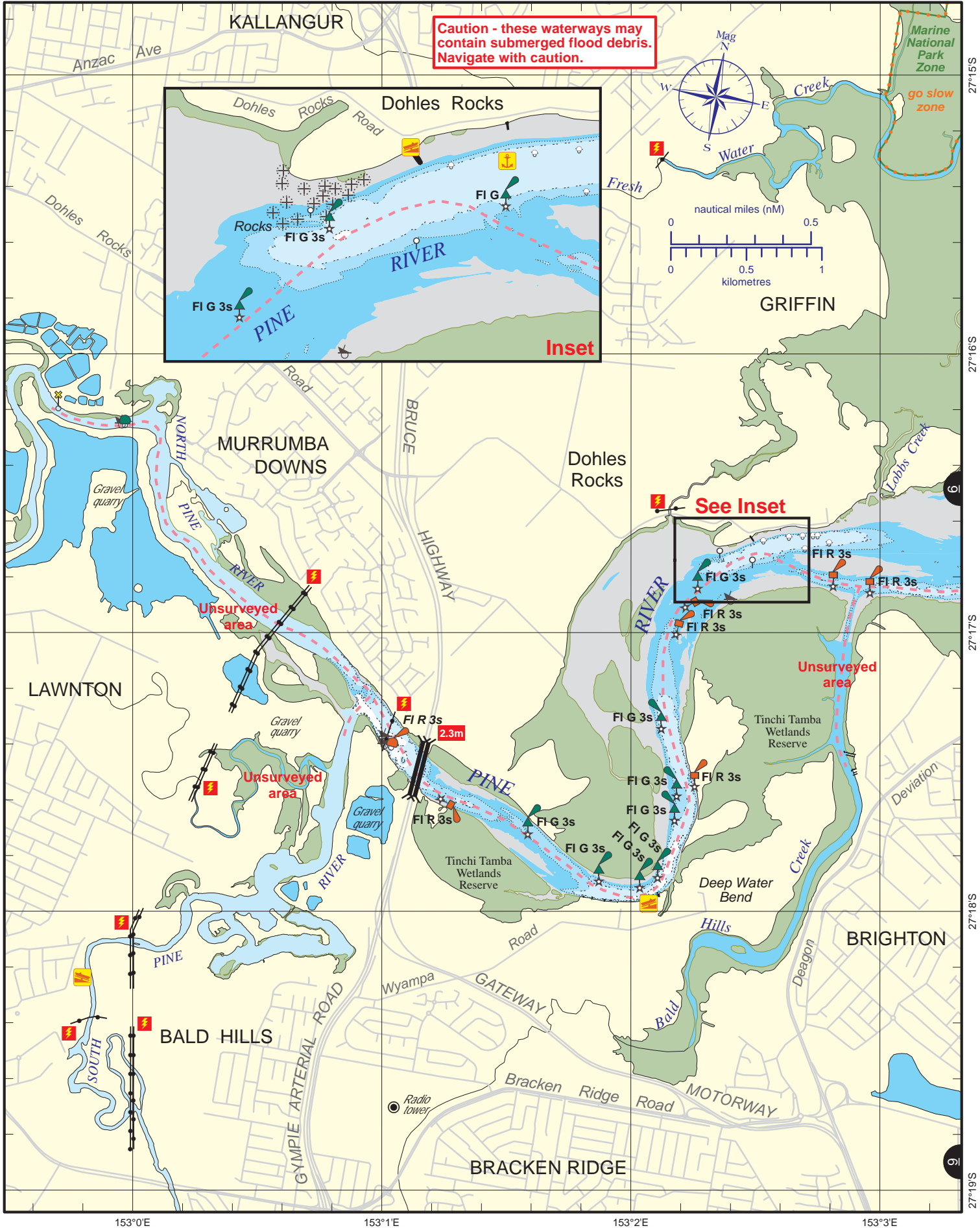
Nautical information current to 26 March 2018

© Copyright The State of Queensland 2018

Queensland Department of Transport and Main Roads - Maritime Safety Queensland.

To reproduce any map within this series, see terms and conditions at Maritime Safety Queensland's website (www.msq.qld.gov.au)





Always keep a proper lookout when boating. Nautical information current to 26 March 2018

Look up and live for power and cable crossings that may not be shown on these maps due to scale or recent construction.

CAUTION: depth contours have not been re-surveyed in most areas since the 2011 and 2013 floods.

Exercise care when travelling outside suggested navigation tracks.

© Copyright The State of Queensland 2018
 Queensland Department of Transport and Main Roads - Maritime Safety Queensland.
 To reproduce any map within this series, see terms and conditions at Maritime Safety Queensland's website (www.msq.qld.gov.au)






Always keep a proper lookout when boating.

Nautical information current to 26 March 2018

Look up and live for power and cable crossings that may not be shown on these maps due to scale or recent construction.

CAUTION: depth contours have not been re-surveyed in most areas since the 2011 and 2013 floods.

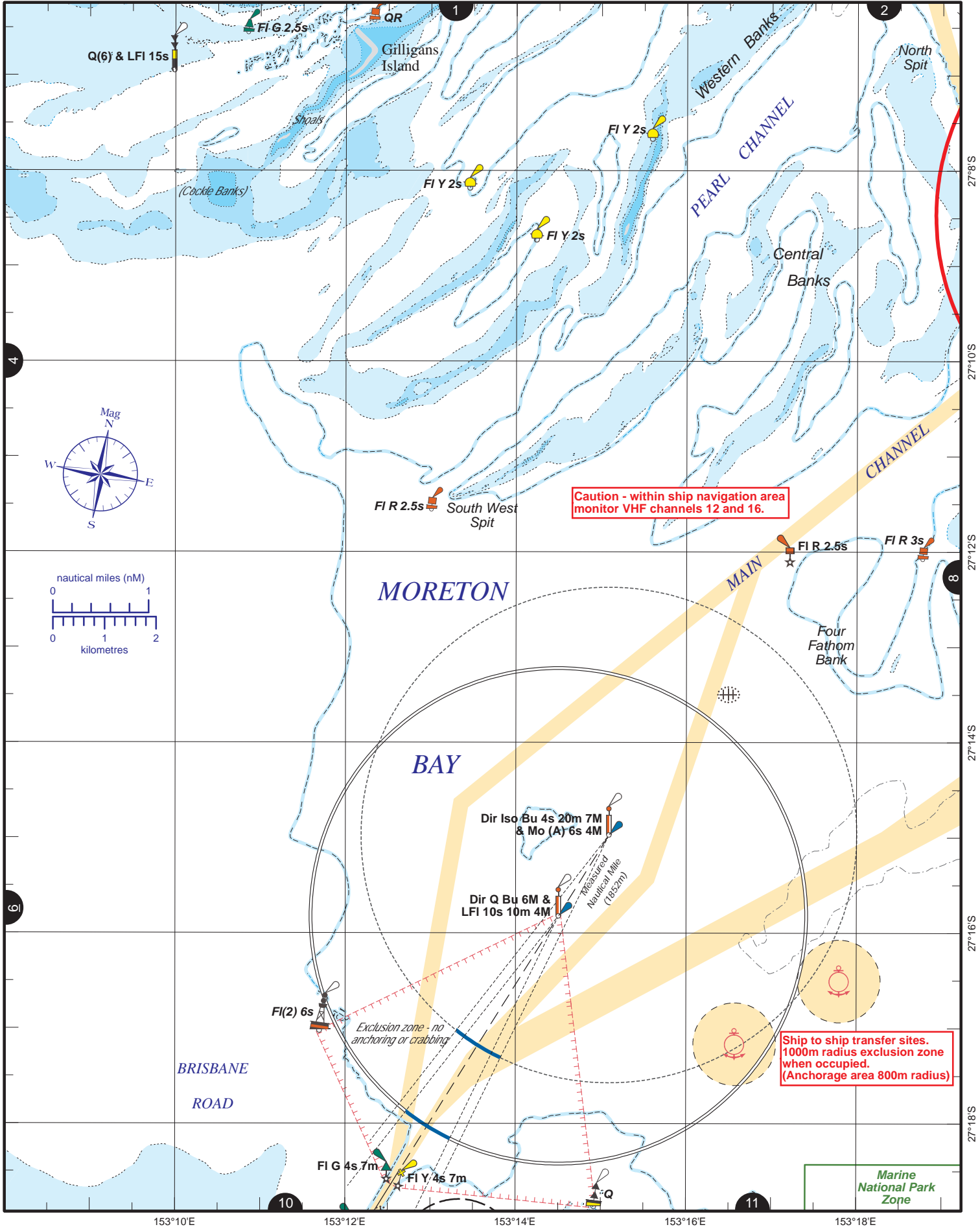
Exercise care when travelling outside suggested navigation tracks.

© Copyright The State of Queensland 2018

Queensland Department of Transport and Main Roads - Maritime Safety Queensland.

To reproduce any map within this series, see terms and conditions at Maritime Safety Queensland's website (www.msq.qld.gov.au)





Always keep a proper lookout when boating.

Look up and live for power and cable crossings that may not be shown on these maps due to scale or recent construction.

CAUTION: depth contours have not been re-surveyed in most areas since the 2011 and 2013 floods.

Exercise care when travelling outside suggested navigation tracks.

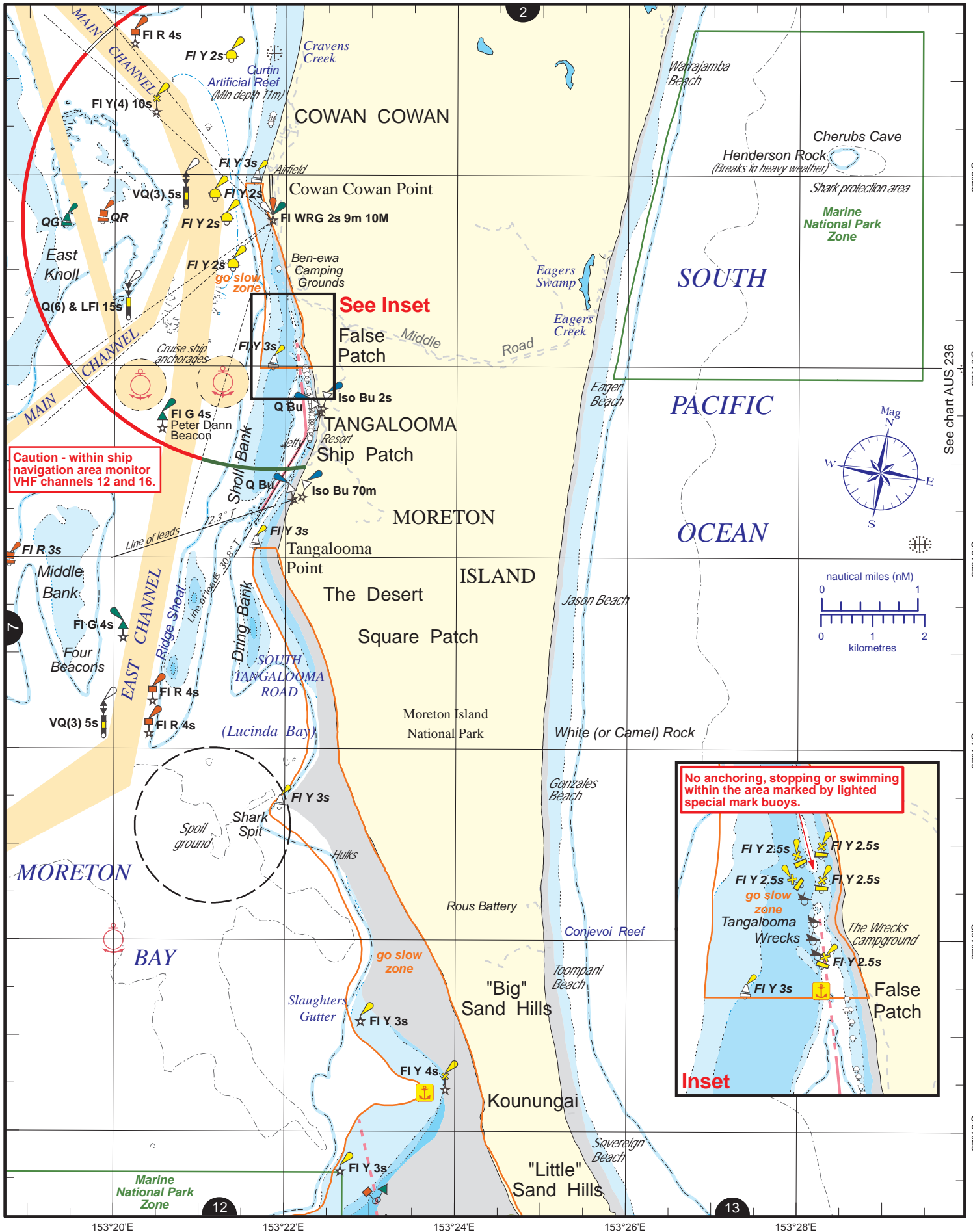
© Copyright The State of Queensland 2018

Queensland Department of Transport and Main Roads - Maritime Safety Queensland.

To reproduce any map within this series, see terms and conditions at Maritime Safety Queensland's website (www.msq.qld.gov.au)

Nautical information current to 26 March 2018





Always keep a proper lookout when boating.
 Look up and live for power and cable crossings that may not be shown on these maps due to scale or recent construction.
CAUTION: depth contours have not been re-surveyed in most areas since the 2011 and 2013 floods.
 Exercise care when travelling outside suggested navigation tracks.

© Copyright The State of Queensland 2018
 Queensland Department of Transport and Main Roads - Maritime Safety Queensland.
 To reproduce any map within this series, see terms and conditions at Maritime Safety Queensland's website (www.msq.qld.gov.au)

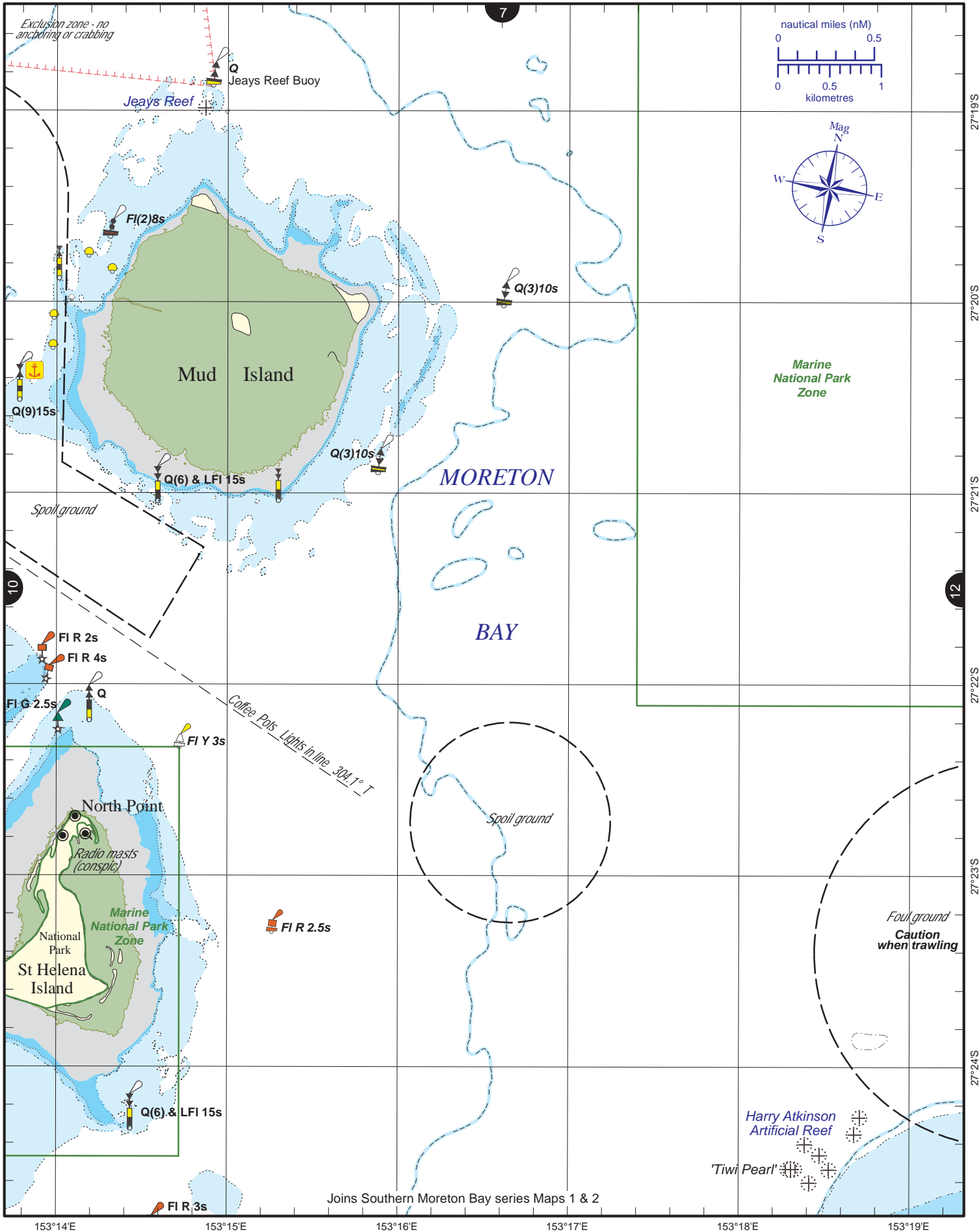
Nautical information current to 26 March 2018






Always keep a proper lookout when boating. Nautical information current to 26 March 2018
Look up and live for power and cable crossings that may not be shown on these maps due to scale or recent construction.
CAUTION: depth contours have not been re-surveyed in most areas since the 2011 and 2013 floods.
Exercise care when travelling outside suggested navigation tracks.
 © Copyright The State of Queensland 2018
 Queensland Department of Transport and Main Roads - Maritime Safety Queensland.
 To reproduce any map within this series, see terms and conditions at Maritime Safety Queensland's website (www.msq.qld.gov.au)





Joins Southern Moreton Bay series Maps 1 & 2

Always keep a proper lookout when boating.

Nautical information current to 26 March 2018

Look up and live for power and cable crossings that may not be shown on these maps due to scale or recent construction.

CAUTION: depth contours have not been re-surveyed in most areas since the 2011 and 2013 floods.

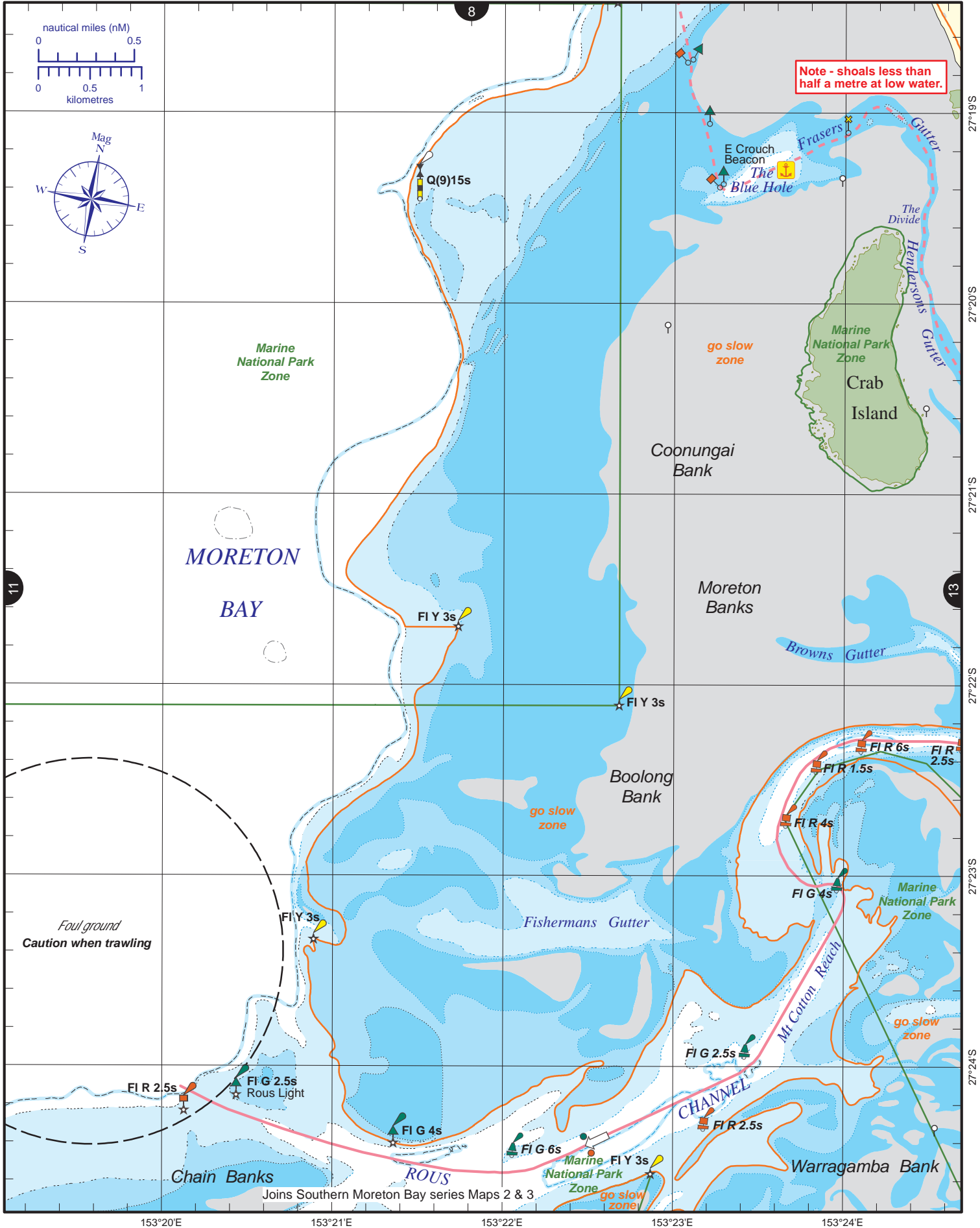
Exercise care when travelling outside suggested navigation tracks.

© Copyright The State of Queensland 2018

Queensland Department of Transport and Main Roads - Maritime Safety Queensland.

To reproduce any map within this series, see terms and conditions at Maritime Safety Queensland's website (www.msq.qld.gov.au)





Always keep a proper lookout when boating.

Look up and live for power and cable crossings that may not be shown on these maps due to scale or recent construction.

CAUTION: depth contours have not been re-surveyed in most areas since the 2011 and 2013 floods.

Exercise care when travelling outside suggested navigation tracks.

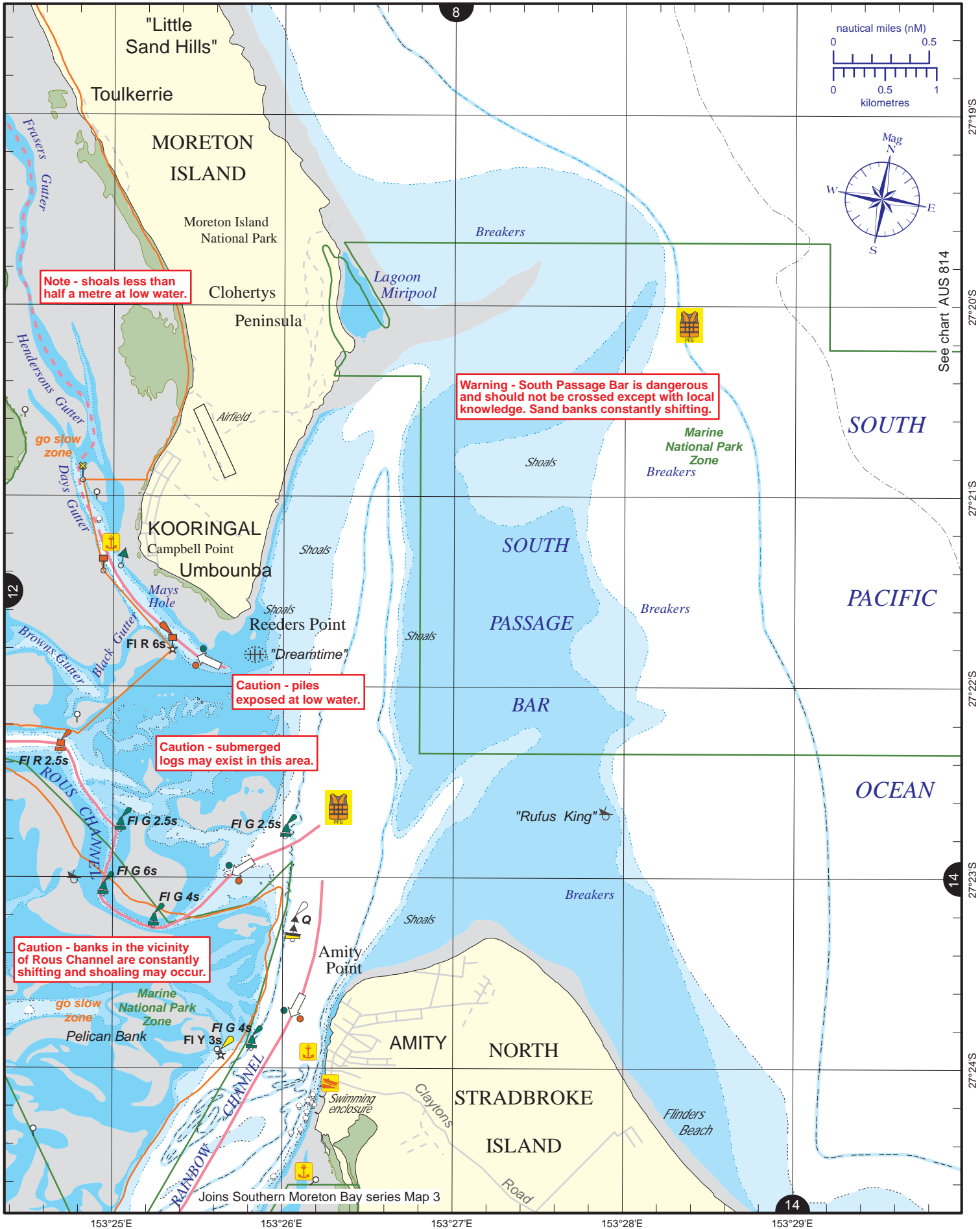
© Copyright The State of Queensland 2018

Queensland Department of Transport and Main Roads - Maritime Safety Queensland.

To reproduce any map within this series, see terms and conditions at Maritime Safety Queensland's website (www.msq.qld.gov.au)

Nautical information current to 26 March 2018





Note - shoals less than half a metre at low water.

Warning - South Passage Bar is dangerous and should not be crossed except with local knowledge. Sand banks constantly shifting.

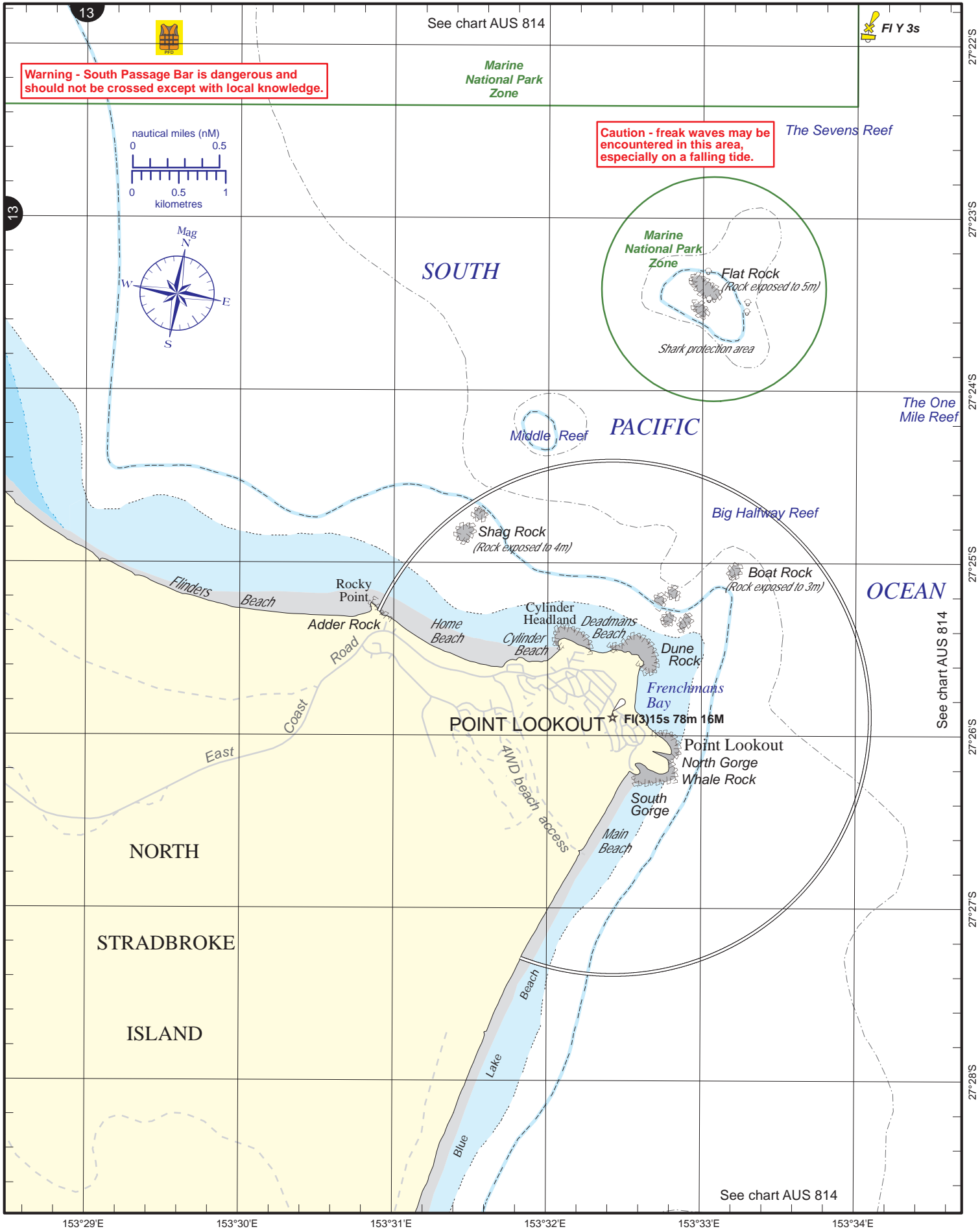
Caution - piles exposed at low water.

Caution - submerged logs may exist in this area.

Caution - banks in the vicinity of Rous Channel are constantly shifting and shoaling may occur.

Always keep a proper lookout when boating. Nautical information current to 26 March 2018
Look up and live for power and cable crossings that may not be shown on these maps due to scale or recent construction.
CAUTION: depth contours have not been re-surveyed in most areas since the 2011 and 2013 floods.
Exercise care when travelling outside suggested navigation tracks.
 © Copyright The State of Queensland 2018
 Queensland Department of Transport and Main Roads - Maritime Safety Queensland.
 To reproduce any map within this series, see terms and conditions at Maritime Safety Queensland's website (www.msq.qld.gov.au)





Always keep a proper lookout when boating.

Nautical information current to 26 March 2018

Look up and live for power and cable crossings that may not be shown on these maps due to scale or recent construction.

CAUTION: depth contours have not been re-surveyed in most areas since the 2011 and 2013 floods.

Exercise care when travelling outside suggested navigation tracks.

© Copyright The State of Queensland 2018

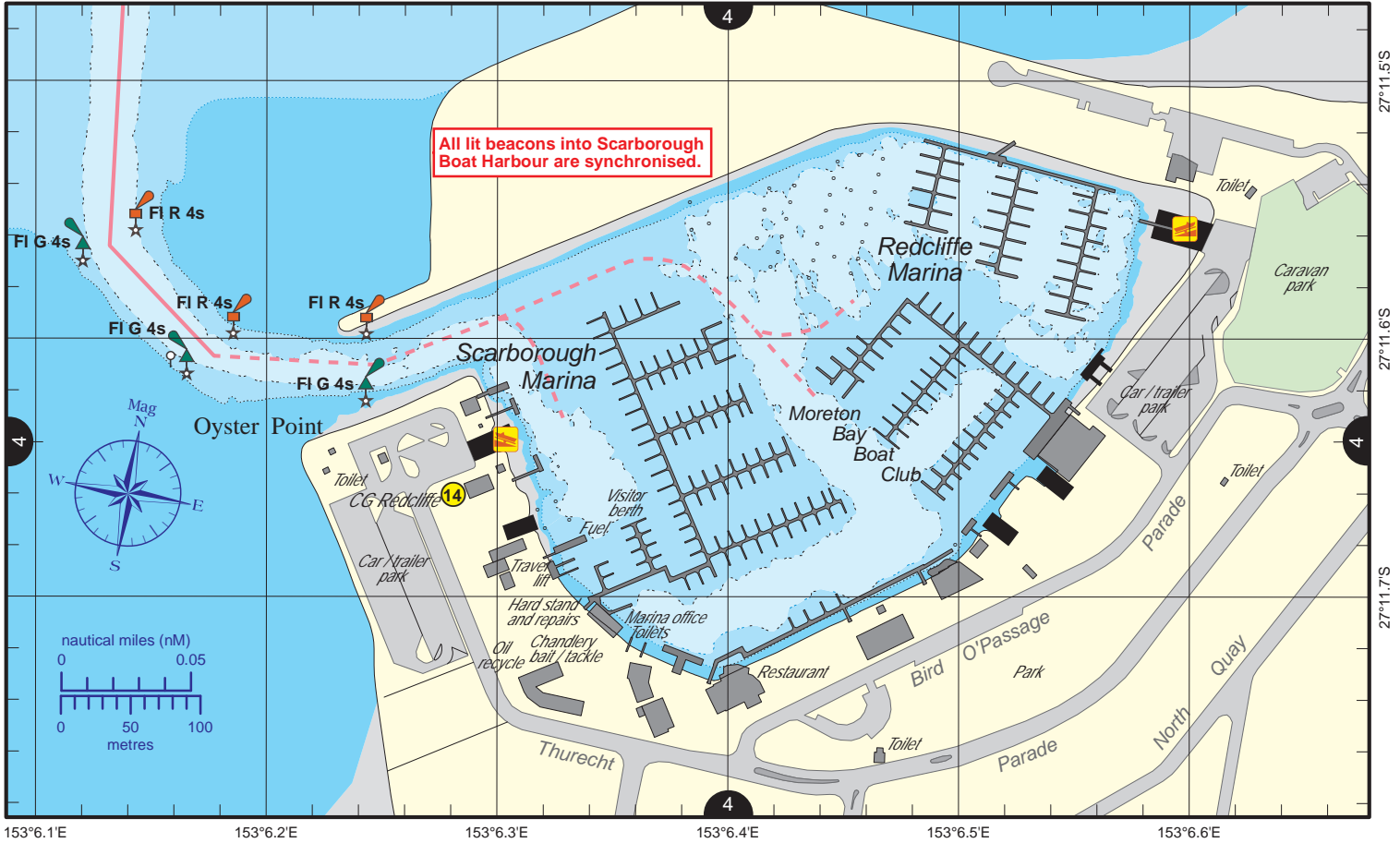
Queensland Department of Transport and Main Roads - Maritime Safety Queensland.

To reproduce any map within this series, see terms and conditions at Maritime Safety Queensland's website (www.msq.qld.gov.au)



CG Redcliffe (0600 – 1800 Mon - Thur, 24 hours w/e (Fri 0600 - Sun 1800))
 (88-91, 16-67-21-73-81, 4125-2182-2524) ph 3203 5522

A Scarborough Boat Harbour



CG Redcliffe (0600 – 1800 Mon - Thur, 24 hours w/e (Fri 0600 - Sun 1800))
 (88-91, 16-67-21-73-81, 4125-2182-2524) ph 3203 5522

B Newport Marina



Always keep a proper lookout when boating.

Nautical information current to 26 March 2018

Look up and live for power and cable crossings that may not be shown on these maps due to scale or recent construction.

CAUTION: depth contours have not been re-surveyed in most areas since the 2011 and 2013 floods.

Exercise care when travelling outside suggested navigation tracks.

© Copyright The State of Queensland 2018

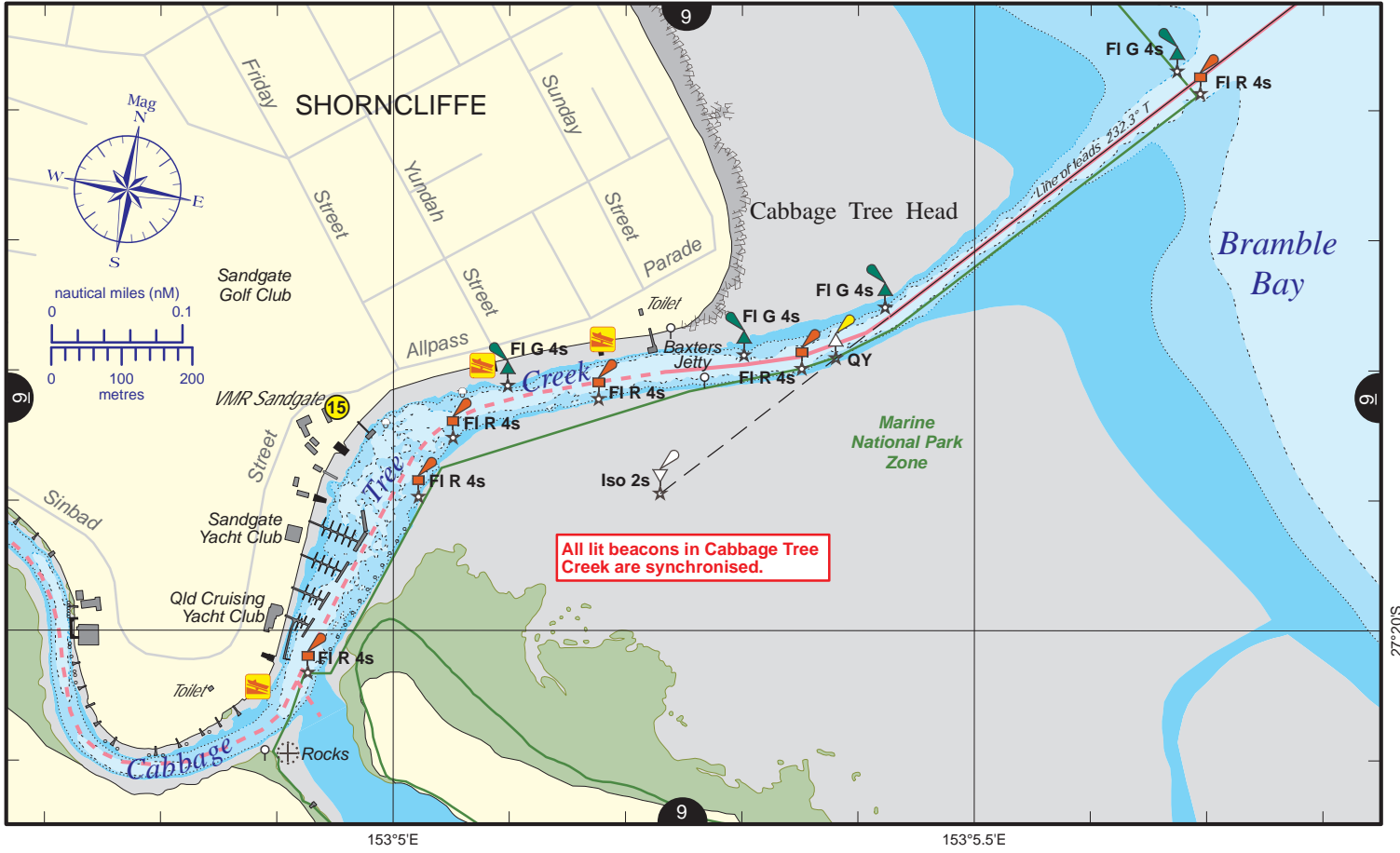
Queensland Department of Transport and Main Roads - Maritime Safety Queensland.

To reproduce any map within this series, see terms and conditions at Maritime Safety Queensland's website (www.msq.qld.gov.au)



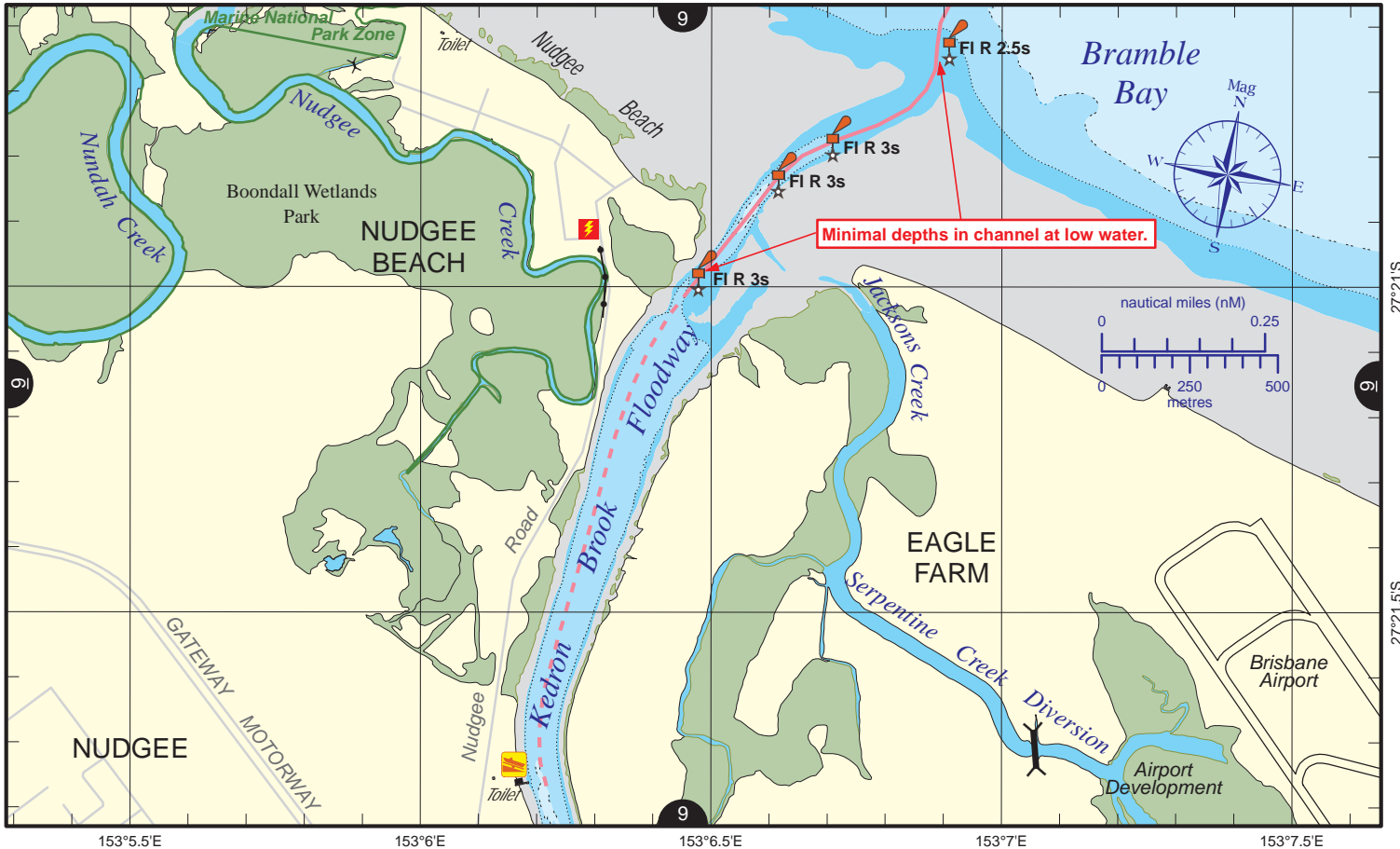
VMR Sandgate (Brisbane) (0600 – 1700 w/e – p/h)
 (88-91, 16-67-21-73-81) ph 3269 8888, 0428 022 881 a/h emergency

C Cabbage Tree Creek



VMR Sandgate (Brisbane) (0600 – 1700 w/e – p/h)
 (88-91, 16-67-21-73-81) ph 3269 8888, 0428 022 881 a/h emergency

D Kedron Brook Floodway



Always keep a proper lookout when boating.

Nautical information current to 26 March 2018

Look up and live for power and cable crossings that may not be shown on these maps due to scale or recent construction.

CAUTION: depth contours have not been re-surveyed in most areas since the 2011 and 2013 floods.

Exercise care when travelling outside suggested navigation tracks.

© Copyright The State of Queensland 2018

Queensland Department of Transport and Main Roads - Maritime Safety Queensland.

To reproduce any map within this series, see terms and conditions at Maritime Safety Queensland's website (www.msq.qld.gov.au)

