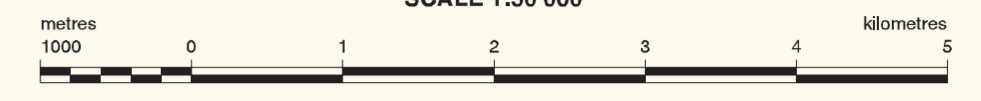


ACID SULFATE SOIL SAMPLING SITES TANNUM SANDS - GLADSTONE

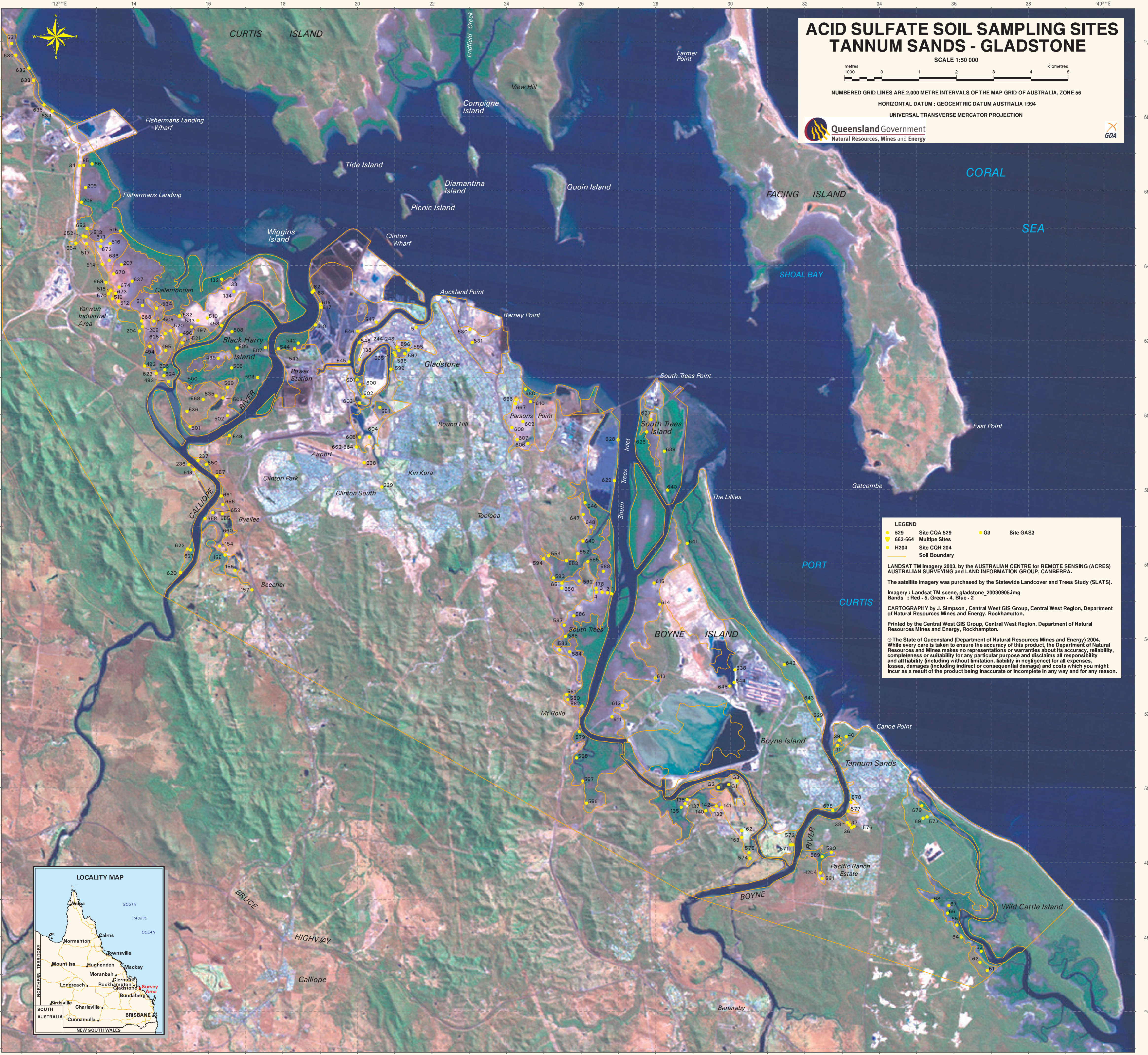
SCALE 1:50 000



NUMBERED GRID LINES ARE 2,000 METRE INTERVALS OF THE MAP GRID OF AUSTRALIA, ZONE 56

HORIZONTAL DATUM : GEOCENTRIC DATUM AUSTRALIA 1994

UNIVERSAL TRANSVERSE MERCATOR PROJECTION



LEGEND

- 529 Site COA 529
- 662-664 Multiple Sites
- H204 Site COH 204
- Site Boundary
- G3 Site GASS

LANDSAT TM imagery 2003, by the AUSTRALIAN CENTRE for REMOTE SENSING (ACRES) AUSTRALIAN SURVEYING and LAND INFORMATION GROUP, CANBERRA.

The satellite imagery was purchased by the Statewide Landcover and Trees Study (SLATS).

Imagery : Landsat TM scene, gladstone_20030905.img
Bands : Red - 5, Green - 4, Blue - 2

CARTOGRAPHY by J. Simpson, Central West GIS Group, Central West Region, Department of Natural Resources Mines and Energy, Rockhampton.

Printed by the Central West GIS Group, Central West Region, Department of Natural Resources Mines and Energy, Rockhampton.

© The State of Queensland (Department of Natural Resources Mines and Energy) 2004. While every care is taken to ensure the accuracy of this product, the Department of Natural Resources and Mines makes no representations or warranties about its accuracy, reliability, completeness or suitability for any particular purpose and disclaims all responsibility and all liability (including without limitation, liability in negligence) for all expenses, losses, damages (including indirect or consequential damage) and costs which you might incur as a result of the product being inaccurate or incomplete in any way and for any reason.

