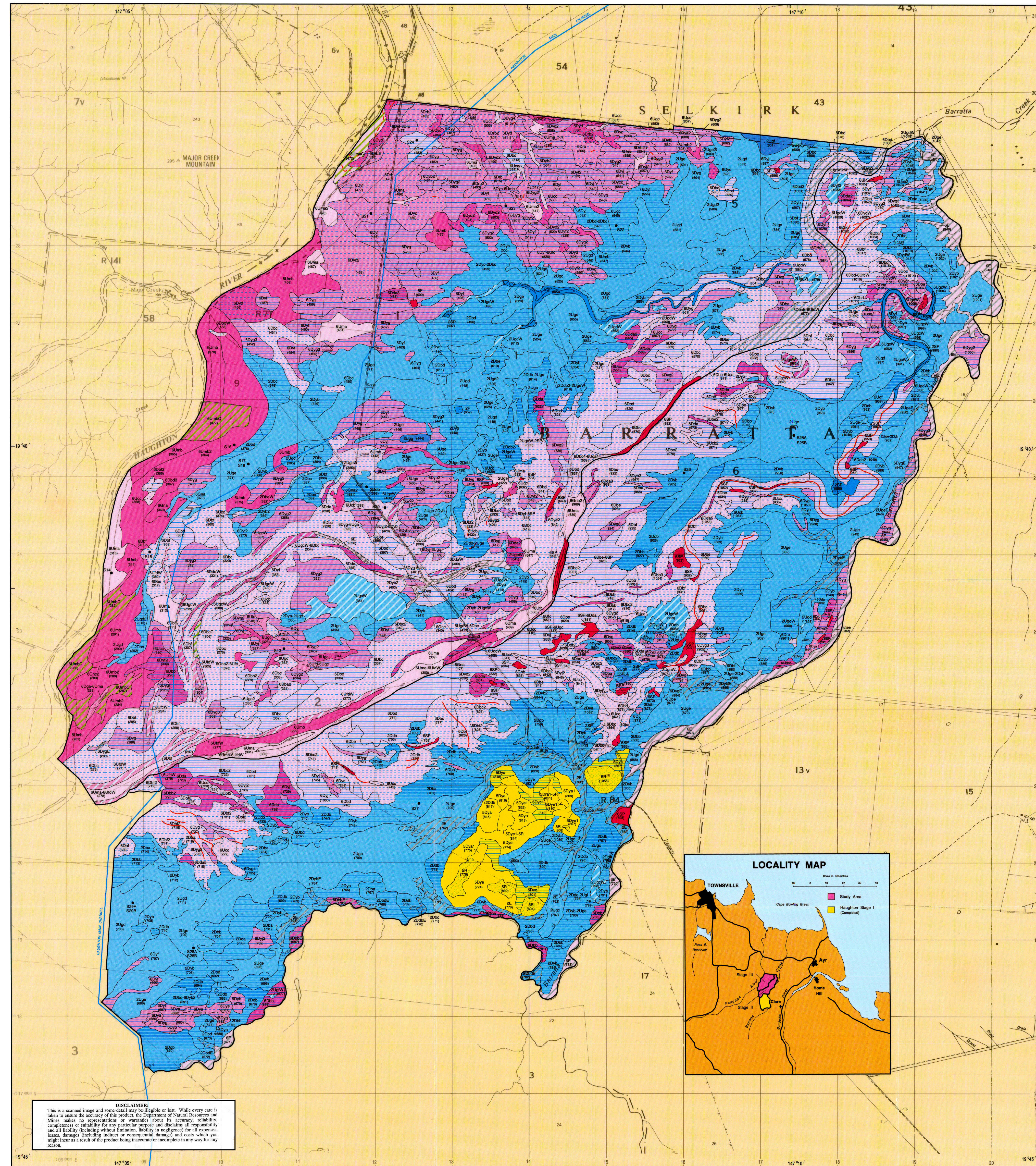
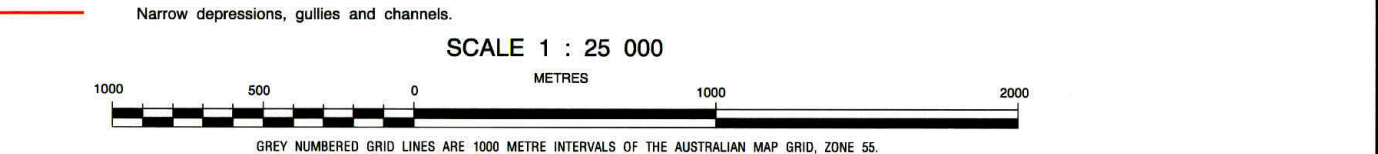
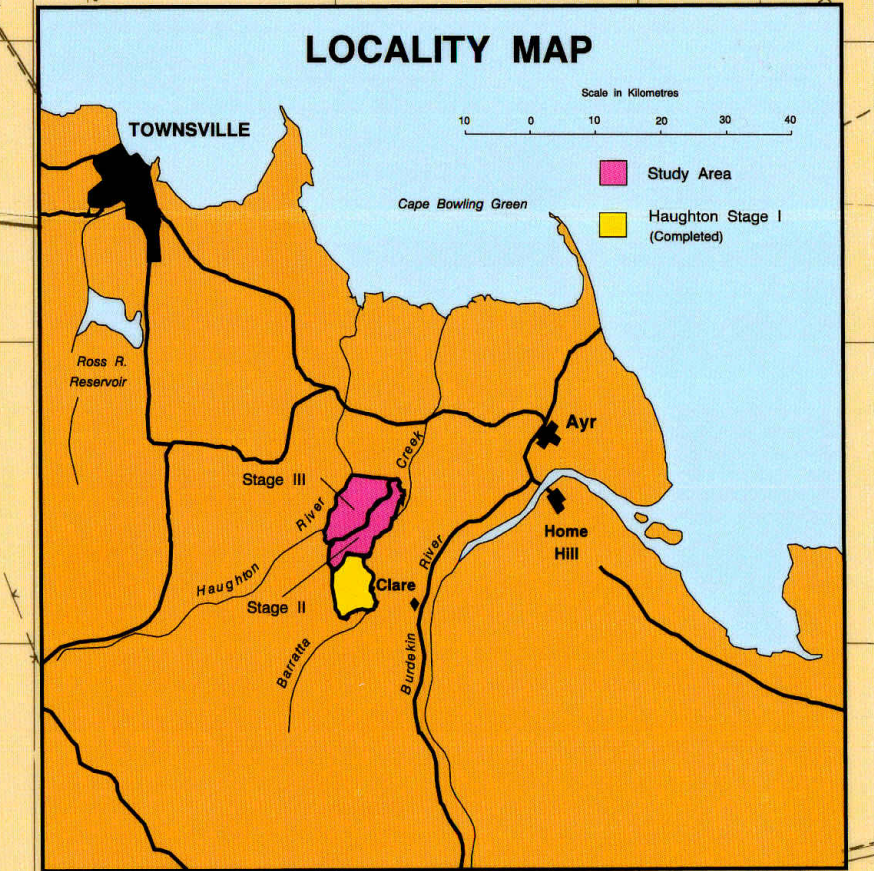


SOILS



Reference tables containing soil descriptions, Great Soil Groups, and Principal Profile Forms. Includes sections for 'SOILS OF THE BURDEKIN AND HAUGHTON RIVER ALLUVIAL PLAINS', 'SOILS OF MISCELLANEOUS ALLUVIAL LANDFORMS', 'SLIGHTLY ELEVATED FLATS', 'SOILS OF THE GENTLY UNDULATING RISES ON AN INTRUSIVE COMPLEX', 'UPPER AND MID SLOPES', 'LOWER SLOPES', 'SOILS OF MISCELLANEOUS ALLUVIAL LANDFORMS', and 'SOILS PRIMARILY OF CREEK AND RELICT ALLUVIAL LANDFORMS'. Also includes 'BACKLAINS AND DEPRESSIONS', 'VARIANTS AND PHASES SUFFIXES', and 'MISCELLANEOUS UNITS'.

DISCLAIMER: This is a scanned image and some detail may be illegible or lost. While every care is taken to ensure the accuracy of this product, the Department of Natural Resources and Mines makes no representation or warranty about its accuracy, reliability, completeness or suitability for any particular purpose and disclaims all responsibility and all liability (including without limitation, liability in negligence) for all consequences, losses, damages (including indirect or consequential damage) and costs which you might incur as a result of the product being inaccurate or incomplete in any way for any reason.



INTENSITY STATEMENT: This is a high intensity soils survey. It is based on aerial photography interpretation and ground observations of the order of one observation to an area of 8 hectares. SURVEYED BY: J.K. Lo, N.G. Christians and J.L. McCurg. Land Management Division, Department of Primary Industries, Brisbane. CARTOGRAPHY BY: D.O. Gooding and J.K. Myers. Land Management Division, Department of Primary Industries, Brisbane. BASE MAP compiled from the 1 : 25 000 Topographic Series supplied by the Department of Lands, Brisbane. PRINTED BY: GOPPRIT, Brisbane, 1994. QUEENSLAND GOVERNMENT, 1994.