

Land cover change in the Burnett Mary region 2012–14

Introduction

This fact sheet is 1 of 13 in a series detailing land cover change in Queensland's Natural Resource Management regions. These fact sheets are addenda to the report: Queensland Department of Science, Information Technology and Innovation. 2015. *Land cover change in Queensland 2012–13 and 2013–14: a Statewide Landcover and Trees Study (SLATS) report*. DSITI, Brisbane. Please refer to this report for further background, terminology, methods and explanatory notes.

Figure 1 and Table 1 provide an historical overview of the remnant and non-remnant woody vegetation clearing trends within the region. The spatial distribution of the 2012–13, 2013–14 and historical woody vegetation clearing is shown in Figure 2. An overview of woody vegetation clearing rates categorised by tenure is provided in Table 2 and Figure 3. Woody vegetation clearing rates and remaining woody vegetation in each catchment within the region are provided in Tables 3 and 4, respectively, while replacement land cover information is provided in Table 5 and Figure 4.

Summary

In 2012–13, the woody vegetation clearing rate for the Burnett Mary region was 14 138 hectares per year (ha/year), an increase of 20% from the 2011–12 woody vegetation clearing rate of 11 794 ha/year (Table 2 and Figure 1).

In 2013–14, the woody vegetation clearing rate was 15 241 ha/year, an increase of 8% from the 2012–13 woody vegetation clearing rate (14 138 ha/year) (Table 2 and Figure 1).

In 2012–13, the clearing rate of remnant woody vegetation in the region was 2 081 ha/year, a decrease of 17% from the 2 495 ha/year reported in the 2011–12 period. In 2013–14, the remnant woody vegetation clearing rate was 2 694 ha/year, an increase of 29% from the 2012–13 period (2 081 ha/year). The clearing of remnant woody vegetation accounted for 15% and 18% of the total woody vegetation clearing in the region for the 2012–13 and 2013–14 periods, respectively (Table 1 and Figure 1).

The Burnett Mary region had the highest woody vegetation clearing rate for the replacement land cover class of forestry in the state, accounting for 63% and 52% of the state's woody vegetation clearing for this class in 2012–13 and 2013–14, respectively (Table 5 and Figure 4).

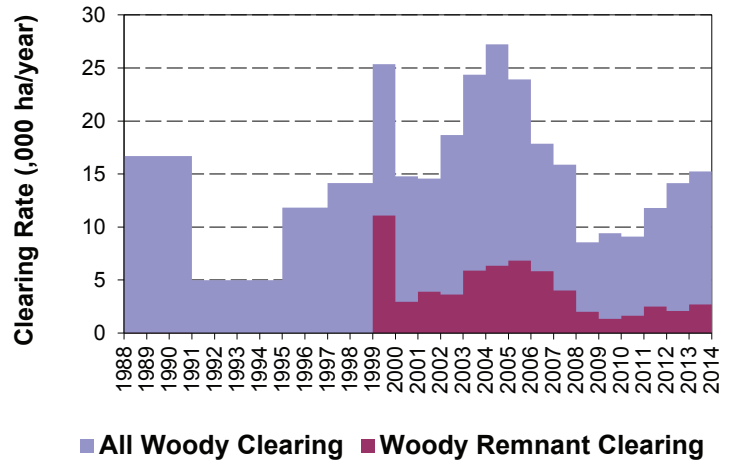


Figure 1. Woody vegetation clearing rates (,000 ha/year) in the Burnett Mary region.

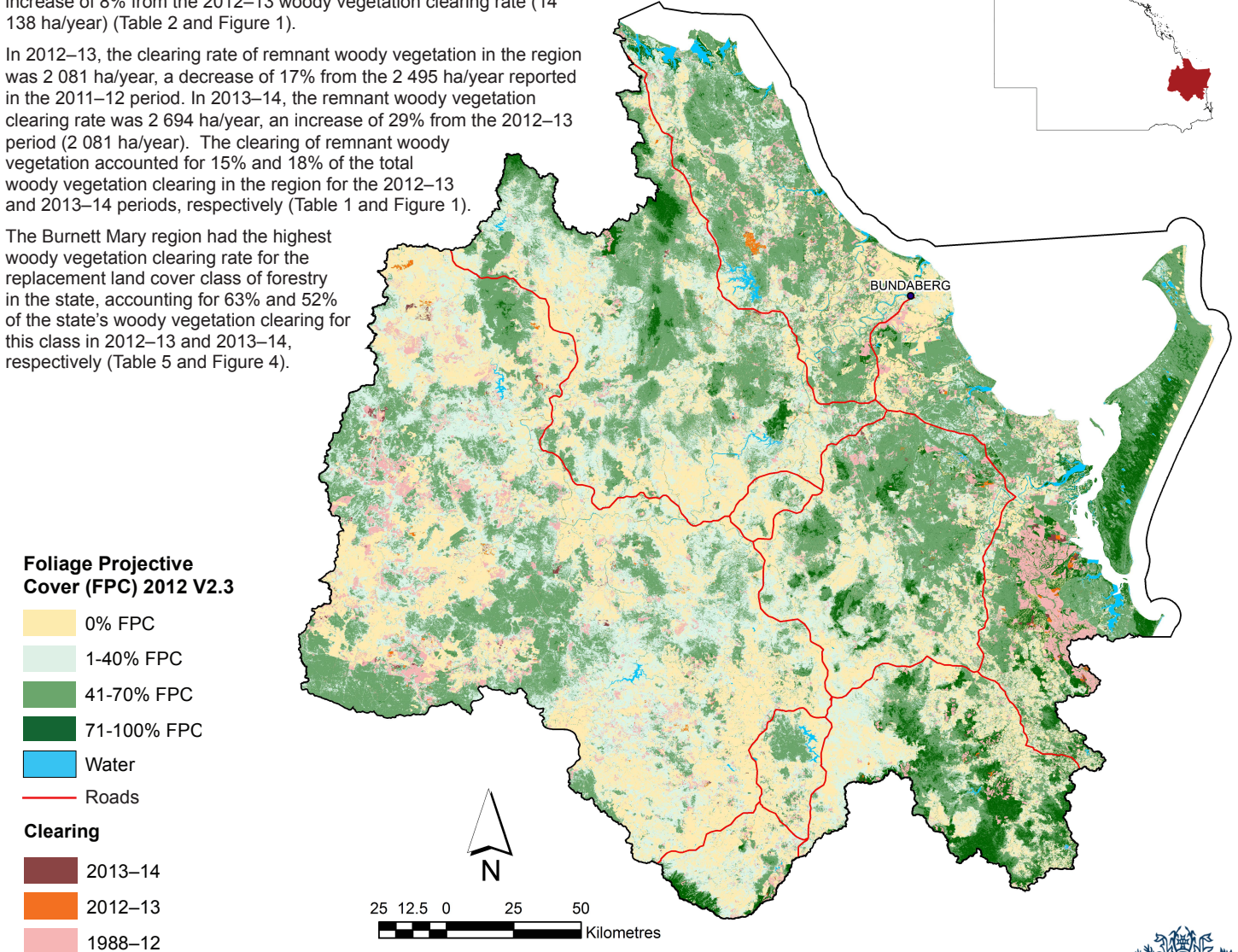


Figure 2. Spatial distribution of current (2012–13 and 2013–14) and historical (1988–12) woody vegetation clearing in the Burnett Mary region.

Woody vegetation clearing by remnant status

Table 1. Remnant and non-remnant woody vegetation clearing rates (,000 ha/year) in the Burnett Mary region.

Period	Non-remnant woody	Remnant woody	Total woody clearing
1999–00	14.279	11.080	25.359
2000–01	11.836	2.945	14.781
2001–02	10.672	3.897	14.568
2002–03	15.045	3.630	18.675
2003–04	18.480	5.887	24.367
2004–05	20.886	6.346	27.231
2005–06	17.093	6.830	23.923
2006–07	12.028	5.830	17.857
2007–08	11.870	4.011	15.880
2008–09	6.553	2.003	8.556
2009–10	8.077	1.338	9.415
2010–11	7.467	1.630	9.097
2011–12	9.299	2.495	11.794
2012–13	12.057	2.081	14.138
2013–14	12.547	2.694	15.241

Woody vegetation clearing by tenure

Table 2. Woody vegetation clearing rates (,000 ha/year) in the Burnett Mary region by tenure.

Period	Freehold	Leasehold	Other tenures	Other reserves	Total
1988–91	12.787	1.469	0.030	2.387	16.674
1991–95	2.888	0.509	0.005	1.581	4.983
1995–97	8.959	0.400	0.008	2.454	11.822
1997–99	10.328	0.692	0.006	3.113	14.138
1999–00	21.350	1.435	0.006	2.569	25.359
2000–01	10.059	0.657	0.001	4.065	14.781
2001–02	10.246	1.425	0.000	2.897	14.568
2002–03	13.399	2.056	0.003	3.218	18.675
2003–04	18.442	1.980	0.005	3.940	24.366
2004–05	22.192	1.073	0.001	3.965	27.231
2005–06	18.837	0.778	0.000	4.307	23.922
2006–07	11.399	1.942	0.001	4.514	17.857
2007–08	10.472	0.977	0.000	4.432	15.880
2008–09	4.934	1.093	0.000	2.529	8.556
2009–10	4.174	0.283	0.000	4.958	9.415
2010–11	4.706	0.481	0.000	3.909	9.096
2011–12	7.258	1.173	0.000	3.364	11.794
2012–13	10.439	0.846	0.000	2.854	14.138
2013–14	9.499	1.749	0.001	3.992	15.241



Figure 3. Woody vegetation clearing rates (,000 ha/year) in the Burnett Mary region by tenure.

Woody vegetation clearing by catchment

Remaining woody vegetation

Table 3. Woody vegetation clearing rates (,000 ha/year) in the Burnett Mary region by catchment.

Catchments	2009–10	2010–11	2011–12	2012–13	2013–14
Baffle Creek	0.413	0.502	0.763	2.986	0.627
Barker & Barambah Creek	0.639	0.586	0.711	0.494	0.534
Boyne & Auburn Rivers	1.448	1.438	3.642	2.482	4.422
Boyne River	0.002	0.011	-	-	-
Brisbane River	-	-	0.001	0.000	0.001
Burrum River	0.093	0.260	0.160	0.163	0.234
Dawson River	-	-	0.001	0.000	0.000
Elliott River	0.087	0.056	0.570	0.088	0.113
Fraser Island	0.000	0.001	0.001	0.000	0.001
Gregory River	0.225	0.211	0.237	0.427	0.321
Isis River	0.097	0.039	0.041	0.126	0.525
Kolan River	0.435	0.363	0.347	0.610	0.947
Lower Burnett River	0.431	0.640	0.722	0.954	0.774
Lower Mary River	2.794	2.510	1.937	2.117	2.137
Noosa River	2.106	1.406	0.961	1.045	1.654
Upper Burnett River	0.198	0.737	1.465	2.313	2.439
Upper Mary River	0.447	0.338	0.234	0.332	0.514
Total	9.415	9.097	11.794	14.138	15.241

Table 4. Remaining woody vegetation in the Burnett Mary region by catchment.

Catchments	Area (,000 ha)	2012 wooded vegetation cover (,000 ha)	% wooded vegetation cover
Baffle Creek	408	334	82
Barker & Barambah Creek	592	352	60
Boyne & Auburn Rivers	1300	848	65
Boyne River	-	-	-
Brisbane River	1	1	83
Burrum River	121	106	87
Dawson River	1	1	64
Elliott River	72	42	58
Fraser Island	165	156	95
Gregory River	91	67	74
Isis River	53	46	88
Kolan River	290	220	76
Lower Burnett River	567	343	60
Lower Mary River	676	490	73
Noosa River	98	88	89
Upper Burnett River	859	591	69
Upper Mary River	270	209	77
Total	5564	3868	69

(-) Catchments are not present in the specific period due to adjusted boundaries as a result of updated catchment datasets.

Woody vegetation clearing by replacement land cover

Table 5. Woody vegetation clearing rates (,000 ha/year) in the Burnett Mary region by replacement land cover.

Period	Pasture	Crop	Forestry	Mining	Infrastructure	Settlement	Total
1988–91	11.638	1.968	2.020	0.033	0.622	0.411	16.692
1991–95	2.647	0.402	1.597	0.054	0.124	0.161	4.986
1995–97	6.214	2.486	2.488	0.114	0.155	0.371	11.828
1997–99	8.278	1.719	3.111	0.030	0.876	0.132	14.145
1999–00	21.117	0.919	2.428	0.066	0.571	0.259	25.359
2000–01	9.622	0.364	4.007	0.144	0.322	0.322	14.781
2001–02	11.161	0.100	2.888	0.115	0.167	0.137	14.568
2002–03	14.806	0.162	3.199	0.051	0.128	0.252	18.598
2003–04	22.562	0.023	1.449	0.161	0.113	0.059	24.367
2004–05	21.866	0.063	4.676	0.186	0.230	0.211	27.231
2005–06	18.324	0.047	5.266	0.127	0.062	0.096	23.923
2006–07	13.317	0.068	4.105	0.067	0.099	0.201	17.857
2007–08	10.388	0.094	4.512	0.063	0.288	0.536	15.880
2008–09	5.924	0.010	2.501	0.014	0.016	0.092	8.557
2009–10	4.120	0.026	4.982	0.047	0.116	0.123	9.415
2010–11	4.762	0.121	4.018	0.031	0.039	0.126	9.097
2011–12	7.712	0.076	3.637	0.090	0.203	0.076	11.794
2012–13	8.393	0.119	5.146	0.077	0.346	0.057	14.138
2013–14	9.933	0.358	4.545	0.116	0.224	0.065	15.241

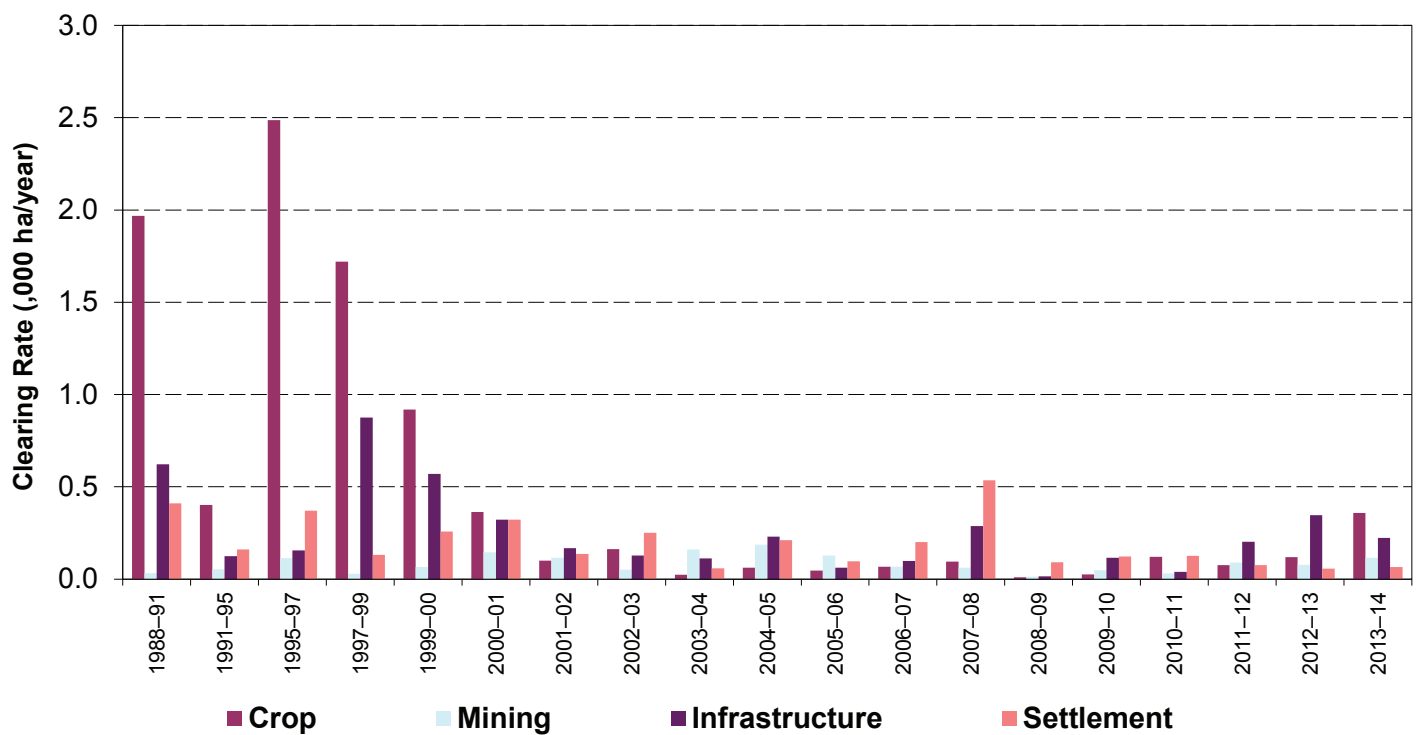
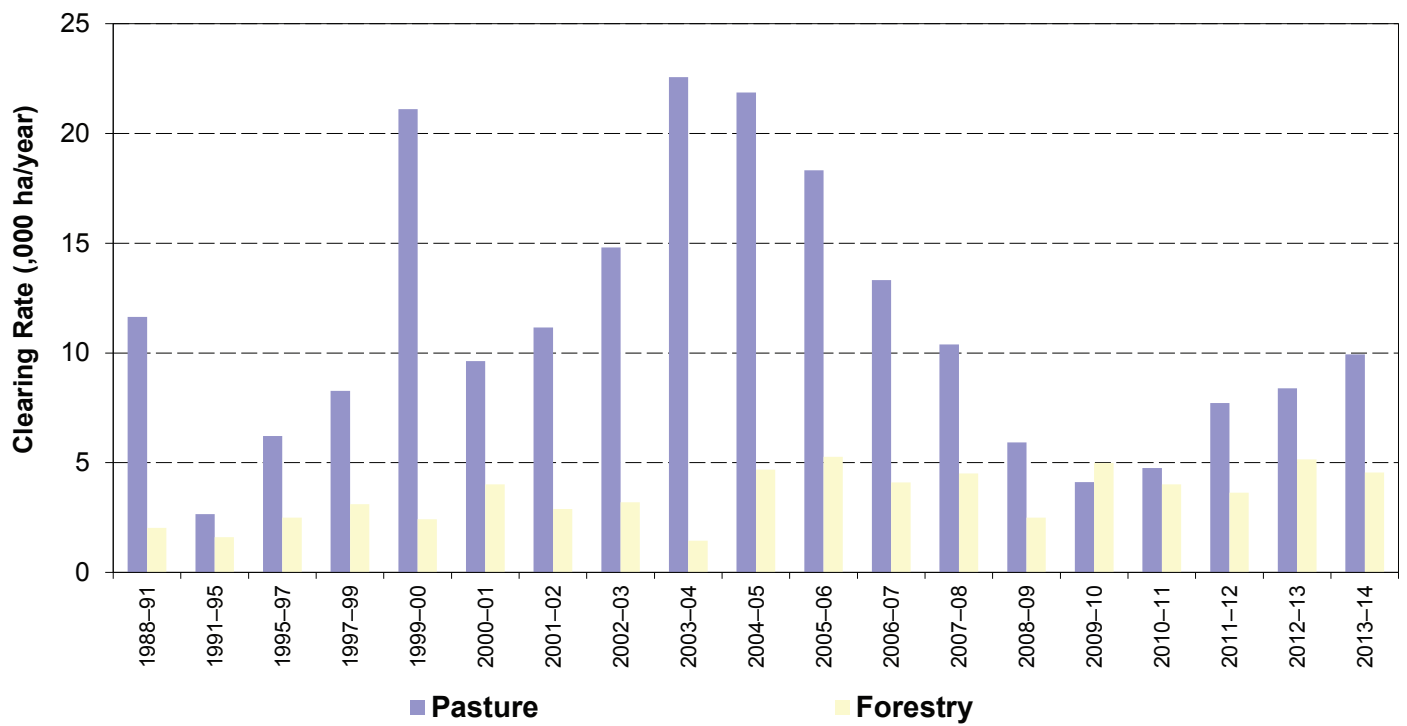


Figure 4. Woody vegetation clearing rates (,000 ha/year) in the Burnett Mary region by replacement land cover.

The Queensland Government supports and encourages the dissemination and exchange of information. However, copyright protects this document. The State of Queensland has no objection to this material being reproduced, made available online or electronically, provided it is for your personal, non-commercial use, or use within your organisation; the material remains unaltered; and the State of Queensland is recognised as the owner.
 © The State of Queensland 2015.

Prepared by
 Remote Sensing Centre
 Science Division
 Department of Science, Information Technology and Innovation
 PO Box 5078
 Brisbane Queensland 4001
 Phone: 13 QGOV (13 74 68)

The Queensland Government supports and encourages the dissemination and exchange of its information. The copyright in this publication is licensed under a Creative Commons Attribution 3.0 Australia (CC BY) licence



Under this licence you are free, without having to seek permission from DSITI, to use this publication in accordance with the licence terms. You must keep intact the copyright notice and attribute the State of Queensland, Department of Science, Information Technology and Innovation as the source of the publication. For more information on this licence visit <http://creativecommons.org/licenses/by/3.0/au/deed.en>