

Land cover change in the Cape York region 2012–14

Introduction

This fact sheet is 1 of 13 in a series detailing land cover change in Queensland's Natural Resource Management regions. These fact sheets are addenda to the report: Queensland Department of Science, Information Technology and Innovation. 2015. *Land cover change in Queensland 2012–13 and 2013–14: a Statewide Landcover and Trees Study (SLATS) report*. DSITI, Brisbane. Please refer to this report for further background, terminology, methods and explanatory notes.

Figure 1 and Table 1 provide an historical overview of the remnant and non-remnant woody vegetation clearing trends within the region. The spatial distribution of the 2012–13, 2013–14 and historical woody vegetation clearing is shown in Figure 2. An overview of woody vegetation clearing rates categorised by tenure is provided in Table 2 and Figure 3. Woody vegetation clearing rates and remaining woody vegetation in each catchment within the region are provided in Tables 3 and 4, respectively, while replacement land cover information is provided in Table 5 and Figure 4.

Summary

In 2012–13, the woody vegetation clearing rate for the Cape York region was 2 204 hectares per year (ha/year). This was similar to the 2011–12 woody vegetation clearing rate of 2 115 ha/year (Table 2 and Figure 1).

In 2013–14, the woody vegetation clearing rate was 2 811 ha/year, an increase of 28% from the 2012–13 woody vegetation clearing rate (2 204 ha/year) (Table 2 and Figure 1).

In 2012–13, the clearing rate of remnant woody vegetation in the region was 1 799 ha/year, a decrease of 5% from the 1 902 ha/year reported in the 2011–12 period. In 2013–14, the remnant woody vegetation clearing rate was 2 292 ha/year, an increase of 27% from the 2012–13 period (1 799 ha/year). The clearing of remnant woody vegetation accounted for 82% of the total woody vegetation clearing in the region for both periods (Table 1 and Figure 1).

The replacement land cover class for mining represented 64% and 67% of woody vegetation clearing reported in the region for the 2012–13 and 2013–14 periods, respectively (Table 5 and Figure 4).

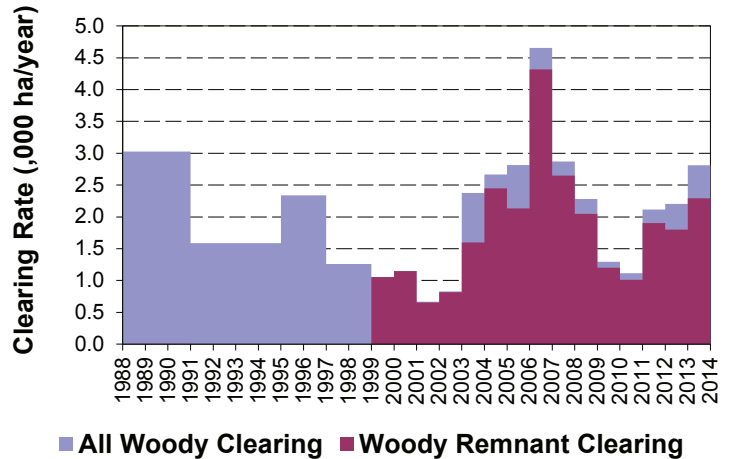
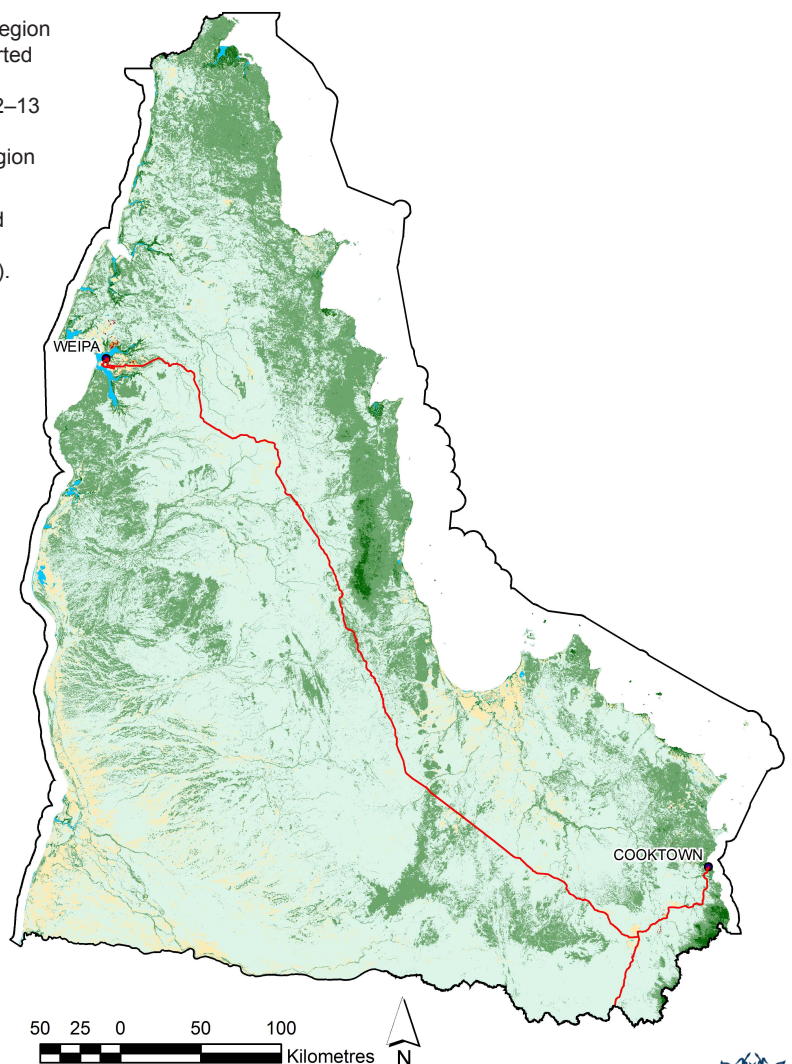
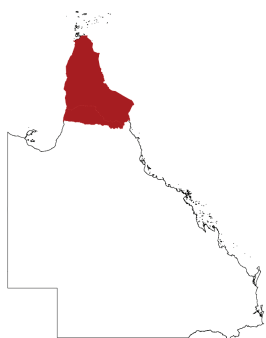


Figure 1. Woody vegetation clearing rates (,000 ha/year) in the Cape York region.



Foliage Projective Cover (FPC) 2012 V2.3

- 0% FPC
- 1-40% FPC
- 41-70% FPC
- 71-100% FPC
- Water
- Roads

Clearing

- 2013–14
- 2012–13
- 1988–12

Figure 2. Spatial distribution of current (2012–13 and 2013–14) and historical (1988–12) woody vegetation clearing in the Cape York region.

Woody vegetation clearing by remnant status

Table 1. Remnant and non-remnant woody vegetation clearing rates (,000 ha/year) in the Cape York region.

Period	Non-remnant woody	Remnant woody	Total woody clearing
1999–00	0.002	1.053	1.055
2000–01	0.000	1.147	1.147
2001–02	0.012	0.654	0.666
2002–03	0.013	0.816	0.828
2003–04	0.778	1.598	2.376
2004–05	0.218	2.448	2.666
2005–06	0.682	2.133	2.814
2006–07	0.337	4.319	4.656
2007–08	0.220	2.649	2.870
2008–09	0.234	2.047	2.281
2009–10	0.093	1.200	1.294
2010–11	0.104	1.010	1.114
2011–12	0.213	1.902	2.115
2012–13	0.404	1.799	2.204
2013–14	0.519	2.292	2.811

Woody vegetation clearing by tenure

Table 2. Woody vegetation clearing rates (,000 ha/year) in the Cape York region by tenure.

Period	Freehold	Leasehold	Other tenures	Other reserves	Total
1988–91	0.408	1.528	1.018	0.073	3.027
1991–95	0.282	1.061	0.284	0.005	1.632
1995–97	0.525	0.888	0.892	0.034	2.339
1997–99	0.105	0.484	0.654	0.016	1.259
1999–00	0.181	0.214	0.658	0.002	1.055
2000–01	0.134	0.323	0.682	0.009	1.147
2001–02	0.168	0.480	0.016	0.002	0.666
2002–03	0.190	0.444	0.164	0.030	0.828
2003–04	0.888	0.659	0.756	0.072	2.375
2004–05	0.428	1.380	0.814	0.043	2.665
2005–06	0.139	1.595	1.015	0.066	2.814
2006–07	0.148	2.442	1.944	0.121	4.656
2007–08	0.023	0.942	1.896	0.008	2.870
2008–09	0.124	1.104	1.020	0.033	2.281
2009–10	0.075	0.577	0.622	0.02	1.294
2010–11	0.167	0.588	0.319	0.041	1.114
2011–12	0.142	0.399	1.518	0.057	2.115
2012–13	0.135	0.664	1.380	0.024	2.204
2013–14	0.186	0.641	1.885	0.100	2.811

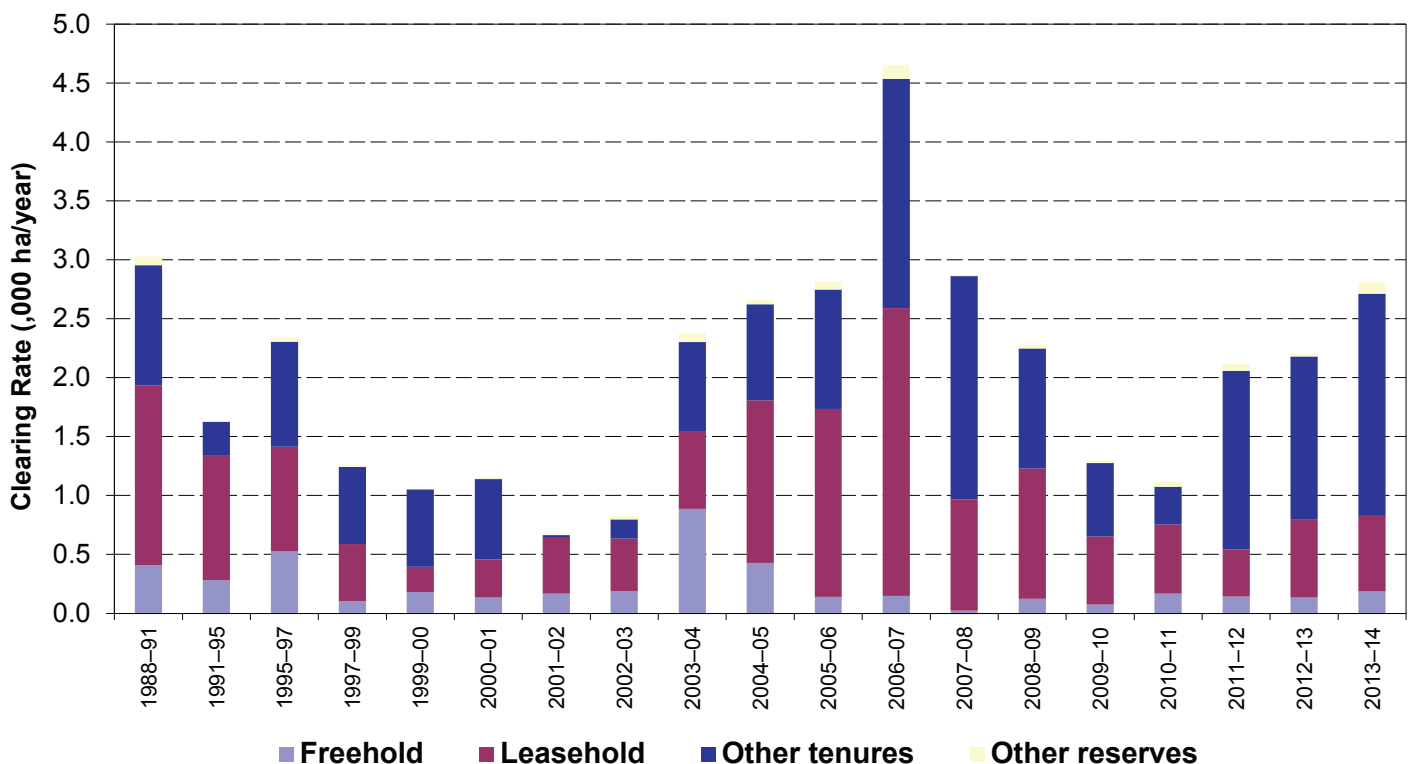


Figure 3. Woody vegetation clearing rates (,000 ha/year) in the Cape York region by tenure.

Woody vegetation clearing by catchment

Table 3. Woody vegetation clearing rates (,000 ha/year) in the Cape York region by catchment.

Catchments	2009–10	2010–11	2011–12	2012–13	2013–14
Alice River	0.064	0.072	0.009	0.080	0.031
Archer River	0.004	0.095	0.079	0.007	0.022
Coen River	0.031	0.072	0.000	0.012	0.022
Coleman River	0.054	0.059	0.018	0.008	0.012
Ducie River	0.000	0.008	0.001	0.015	0.012
Edward River	0.019	0.040	0.031	0.024	0.030
Embley River	0.040	0.047	0.158	0.261	0.118
Endeavour River	0.019	0.038	0.129	0.099	0.067
Hann River	0.006	0.053	0.089	0.070	0.053
Holroyd River	0.005	0.003	0.006	0.010	0.051
Jacky Jacky Creek	0.000	0.000	0.001	0.002	0.010
Jardine River	0.000	0.000	0.012	0.002	0.029
Jeannie river	0.014	0.115	0.012	0.028	0.076
Kendall River	0.001	0.009	0.002	0.019	0.012
Lockhart River	0.003	0.001	0.000	0.000	0.009
McDonald River	0.000	0.000	0.000	0.000	0.000
Mission River	0.583	0.283	1.272	1.134	1.777
Mitchell River	0.172	0.046	0.004	0.000	0.002
Normanby River	0.137	0.118	0.043	0.282	0.346
Olive River	0.000	0.000	0.000	0.011	0.000
Palmer River	0.125	0.031	0.097	0.091	0.061
Pascoe River	0.003	0.008	0.000	0.002	0.000
Skardon River	0.000	0.000	0.000	0.000	0.000
Stewart River	0.000	0.014	0.000	0.006	0.017
Watson River	0.006	0.001	0.144	0.002	0.016
Wenlock River	0.007	0.003	0.010	0.038	0.037
Total	1.294	1.115	2.115	2.204	2.811

Remaining woody vegetation

Table 4. Remaining woody vegetation in the Cape York region by catchment.

Catchments	Area (,000 ha)	2012 wooded vegetation cover (,000 ha)	% wooded vegetation cover
Alice River	1294	1163	90
Archer River	1061	1001	94
Coen River	321	309	96
Coleman River	534	497	93
Ducie River	358	347	97
Edward River	751	644	86
Embley River	192	182	94
Endeavour River	210	205	97
Hann River	956	839	88
Holroyd River	544	526	97
Jacky Jacky Creek	296	284	96
Jardine River	328	319	97
Jeannie river	363	341	94
Kendall River	485	480	99
Lockhart River	288	282	98
McDonald River	271	262	97
Mission River	268	243	91
Mitchell River	860	612	71
Normanby River	1484	1402	95
Olive River	205	201	98
Palmer River	812	782	96
Pascoe River	212	211	99
Skardon River	44	41	93
Stewart River	274	263	96
Watson River	468	455	97
Wenlock River	752	728	97
Total	13631	12619	93

Woody vegetation clearing by replacement land cover

Table 5. Woody vegetation clearing rates (,000 ha/year) in the Burnett Mary region by replacement land cover.

Period	Pasture	Crop	Forestry	Mining	Infrastructure	Settlement	Total
1988–91	1.090	0.000	0.000	0.597	1.339	0.002	3.027
1991–95	0.520	0.608	0.000	0.368	0.089	0.001	1.587
1995–97	0.044	0.599	0.000	0.697	0.991	0.007	2.338
1997–99	0.154	0.655	0.000	0.018	0.431	0.002	1.260
1999–00	0.810	0.004	0.002	0.000	0.235	0.003	1.055
2000–01	0.918	0.000	0.000	0.000	0.229	0.000	1.147
2001–02	0.488	0.000	0.000	0.000	0.176	0.003	0.666
2002–03	0.718	0.000	0.000	0.005	0.105	0.000	0.828
2003–04	1.360	0.000	0.000	0.634	0.379	0.003	2.376
2004–05	0.735	0.000	0.000	0.833	1.086	0.012	2.666
2005–06	1.382	0.000	0.000	0.979	0.450	0.003	2.814
2006–07	2.309	0.000	0.000	1.841	0.491	0.015	4.656
2007–08	0.915	0.000	0.000	1.918	0.033	0.004	2.870
2008–09	0.891	0.000	0.000	0.732	0.656	0.002	2.281
2009–10	0.479	0.000	0.000	0.616	0.190	0.008	1.294
2010–11	0.535	0.000	0.000	0.328	0.248	0.003	1.114
2011–12	0.469	0.000	0.000	1.394	0.250	0.002	2.115
2012–13	0.501	0.002	0.000	1.400	0.292	0.009	2.204
2013–14	0.683	0.000	0.000	1.892	0.217	0.019	2.811

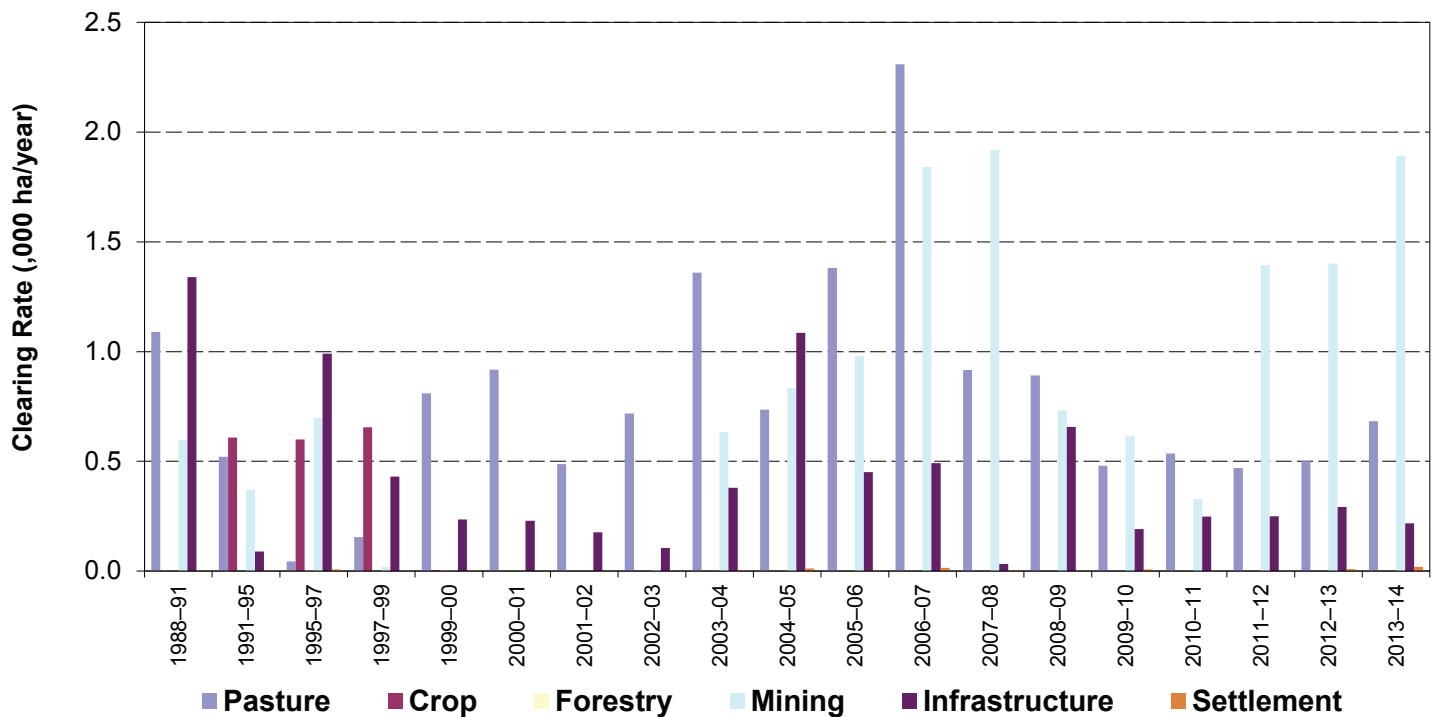


Figure 4. Woody vegetation clearing rates (,000 ha/year) in the Cape York region by replacement land cover.

The Queensland Government supports and encourages the dissemination and exchange of information. However, copyright protects this document. The State of Queensland has no objection to this material being reproduced, made available online or electronically, provided it is for your personal, non-commercial use, or use within your organisation; the material remains unaltered; and the State of Queensland is recognised as the owner.

© The State of Queensland 2015.

Prepared by
Remote Sensing Centre
Science Division
Department of Science, Information Technology and Innovation
PO Box 5078
Brisbane Queensland 4001
Phone: 13 QGOV (13 74 68)

The Queensland Government supports and encourages the dissemination and exchange of its information. The copyright in this publication is licensed under a Creative Commons Attribution 3.0 Australia (CC BY) licence



Under this licence you are free, without having to seek permission from DSITI, to use this publication in accordance with the licence terms. You must keep intact the copyright notice and attribute the State of Queensland, Department of Science, Information Technology and Innovation as the source of the publication. For more information on this licence visit <http://creativecommons.org/licenses/by/3.0/au/deed.en>