

Land cover change in the Condamine region 2012–14

Introduction

This fact sheet is 1 of 13 in a series detailing land cover change in Queensland's Natural Resource Management regions. These fact sheets are addenda to the report: Queensland Department of Science, Information Technology and Innovation. 2015. *Land cover change in Queensland 2012–13 and 2013–14: a Statewide Landcover and Trees Study (SLATS) report*. DSITI, Brisbane. Please refer to this report for further background, terminology, methods and explanatory notes.

Figure 1 and Table 1 provide an historical overview of the remnant and non-remnant woody vegetation clearing trends within the region. The spatial distribution of the 2012–13, 2013–14 and historical woody vegetation clearing is shown in Figure 2. An overview of woody vegetation clearing rates categorised by tenure is provided in Table 2 and Figure 3. Woody vegetation clearing rates and remaining woody vegetation in each catchment within the region are provided in Tables 3 and 4, respectively, while replacement land cover information is provided in Table 5 and Figure 4.

Summary

In 2012–13, the woody vegetation clearing rate for the Condamine region was 8 165 hectares per year (ha/year), an increase of 65% from the 2011–12 woody vegetation clearing rate of 4 935 ha/year (Table 2 and Figure 1). This is the highest clearing rate since the 1999–2000 period for this region, and second highest since 1988.

In 2013–14, the woody vegetation clearing rate was 5 959 ha/year, a decrease of 27% from the 2012–13 woody vegetation clearing rate (8 165 ha/year) (Table 2 and Figure 1).

In 2012–13, the clearing rate of remnant woody vegetation in the region was 2 677 ha/year, an increase of 93% from the 1 390 ha/year reported in the 2011–12 period. In 2013–14, the remnant woody vegetation clearing rate was 2 180 ha/year, a decrease of 19% from the 2012–13 period (2 677 ha/year). The clearing of remnant woody vegetation accounted for 33% and 37% of the total woody vegetation clearing in the region for the 2012–13 and 2013–14 periods, respectively (Table 1 and Figure 1).

The Condamine region had the highest woody vegetation clearing rate for the replacement land cover class of infrastructure in the state for the 2012–13 period, accounting for 35% of the state's woody vegetation clearing for this class (Table 5 and Figure 4).

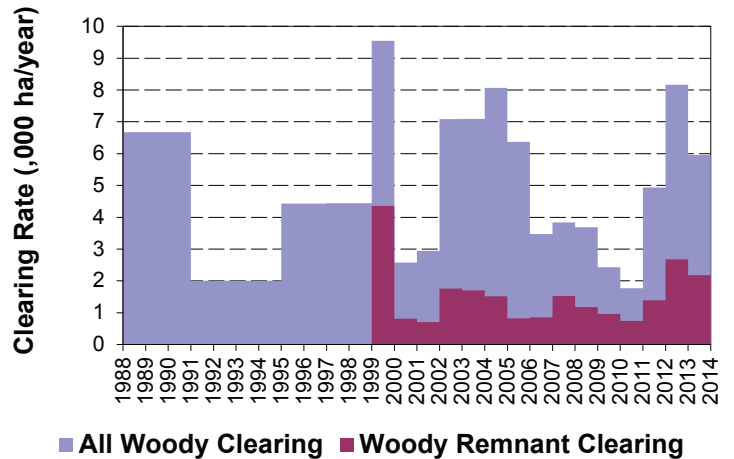
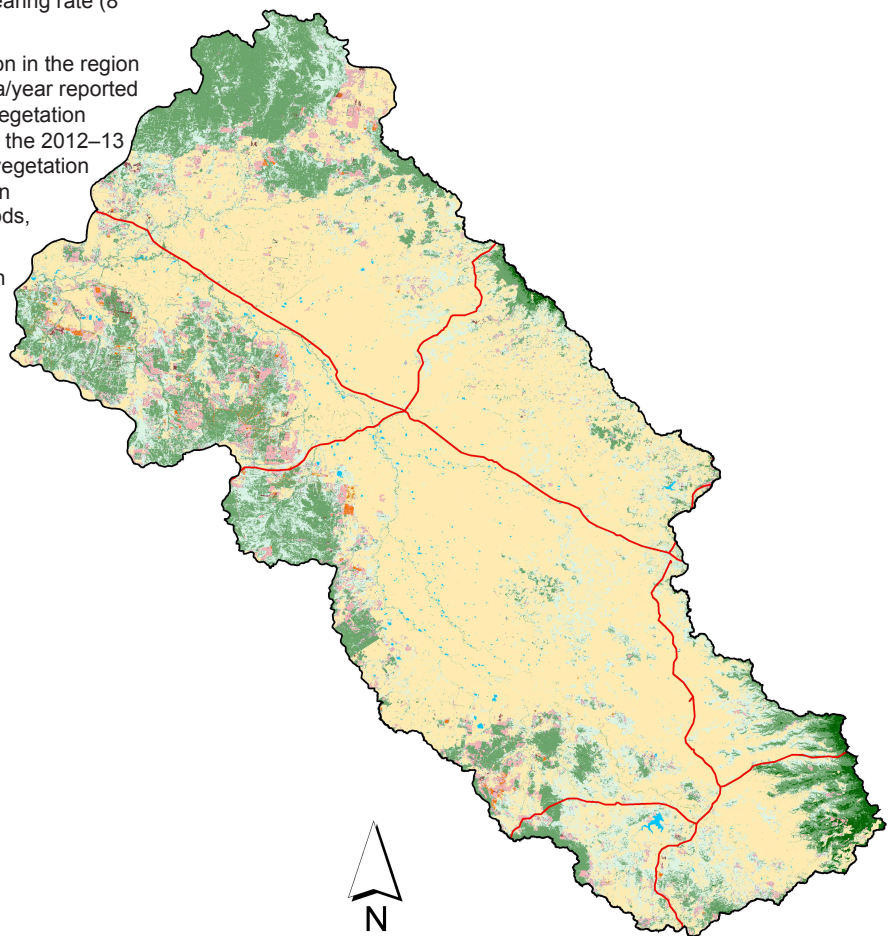
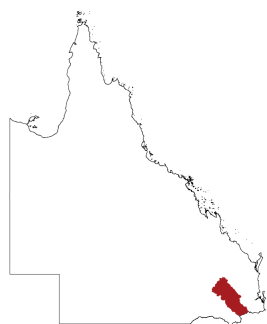


Figure 1. Woody vegetation clearing rates (,000 ha/year) in the Condamine region.



Foliage Projective Cover (FPC) 2012 V2.3

- 0% FPC
- 1-40% FPC
- 41-70% FPC
- 71-100% FPC
- Water
- Roads

Clearing

- 2013–14
- 2012–13
- 1988–12

Figure 2. Spatial distribution of current (2012–13 and 2013–14) and historical (1988–12) woody vegetation clearing in the Condamine region.

Woody vegetation clearing by remnant status

Table 1. Remnant and non-remnant woody vegetation clearing rates (,000 ha/year) in the Condamine region.

Period	Non-remnant woody	Remnant woody	Total woody clearing
1999-00	5.191	4.356	9.547
2000-01	1.765	0.810	2.576
2001-02	2.241	0.702	2.943
2002-03	5.329	1.758	7.087
2003-04	5.391	1.701	7.092
2004-05	6.553	1.515	8.068
2005-06	5.548	0.822	6.370
2006-07	2.620	0.853	3.473
2007-08	2.314	1.523	3.837
2008-09	2.510	1.176	3.686
2009-10	1.468	0.960	2.428
2010-11	1.029	0.740	1.760
2011-12	3.545	1.390	4.935
2012-13	5.488	2.677	8.165
2013-14	3.780	2.180	5.959

Woody vegetation clearing by tenure

Table 2. Woody vegetation clearing rates (,000 ha/year) in the Condamine region by tenure.

Period	Freehold	Leasehold	Other tenures	Other reserves	Total
1988-91	6.119	0.464	0.006	0.086	6.675
1991-95	1.872	0.117	0.000	0.014	2.003
1995-97	4.214	0.183	0.003	0.028	4.428
1997-99	4.068	0.233	0.010	0.129	4.441
1999-00	9.338	0.129	0.000	0.080	9.547
2000-01	2.494	0.024	0.000	0.057	2.576
2001-02	2.716	0.128	0.000	0.094	2.938
2002-03	6.866	0.158	0.000	0.062	7.086
2003-04	6.875	0.149	0.000	0.068	7.092
2004-05	7.717	0.187	0.000	0.164	8.068
2005-06	5.994	0.296	0.000	0.079	6.369
2006-07	3.097	0.118	0.000	0.258	3.473
2007-08	3.297	0.144	0.000	0.397	3.837
2008-09	3.328	0.064	0.000	0.294	3.686
2009-10	1.978	0.062	0.000	0.388	2.428
2010-11	1.397	0.044	0.000	0.327	1.768
2011-12	4.504	0.146	0.000	0.285	4.935
2012-13	6.979	0.300	0.001	0.885	8.165
2013-14	5.403	0.136	0.000	0.421	5.959



Figure 3. Woody vegetation clearing rates (,000 ha/year) in the Condamine region by tenure.

Woody vegetation clearing by catchment

Table 3. Woody vegetation clearing rates (,000 ha/year) in the Condamine region by catchment.

Catchments	2009–10	2010–11	2011–12	2012–13	2013–14
Balonne River	0.224	0.129	0.117	0.075	0.108
Condamine River	2.205	1.639	4.818	8.089	5.851
Total	2.429	1.768	4.935	8.165	5.959

Remaining woody vegetation

Table 4. Remaining woody vegetation in the Condamine region by catchment.

Catchments	Area (,000 ha)	2012 wooded vegetation cover (,000 ha)	% wooded vegetation cover
Balonne River	101	82	81
Condamine River	2442	931	38
Total	2543	1012	40

Woody vegetation clearing by replacement land cover

Table 5. Woody vegetation clearing rates (,000 ha/year) in the Condamine region by replacement land cover.

Period	Pasture	Crop	Forestry	Mining	Infrastructure	Settlement	Total
1988–91	4.871	1.588	0.000	0.002	0.213	0.001	6.676
1991–95	1.888	0.029	0.022	0.001	0.057	0.006	2.004
1995–97	3.282	1.016	0.021	0.026	0.081	0.005	4.429
1997–99	3.650	0.485	0.053	0.000	0.252	0.001	4.441
1999–00	7.304	2.044	0.083	0.000	0.111	0.006	9.547
2000–01	1.535	0.828	0.034	0.024	0.154	0.001	2.576
2001–02	2.824	0.013	0.005	0.009	0.090	0.003	2.943
2002–03	7.033	0.000	0.000	0.000	0.032	0.022	7.087
2003–04	6.549	0.048	0.066	0.003	0.369	0.056	7.092
2004–05	7.184	0.007	0.253	0.242	0.375	0.008	8.068
2005–06	6.139	0.025	0.082	0.116	0.002	0.005	6.370
2006–07	2.607	0.000	0.567	0.094	0.197	0.006	3.473
2007–08	3.206	0.000	0.419	0.057	0.149	0.006	3.837
2008–09	2.868	0.002	0.297	0.072	0.443	0.004	3.686
2009–10	1.904	0.000	0.390	0.008	0.119	0.008	2.428
2010–11	1.260	0.022	0.325	0.104	0.053	0.005	1.769
2011–12	3.656	0.017	0.211	0.225	0.823	0.003	4.935
2012–13	4.719	0.082	0.054	0.784	2.510	0.017	8.165
2013–14	4.082	0.091	0.202	0.498	1.078	0.009	5.959

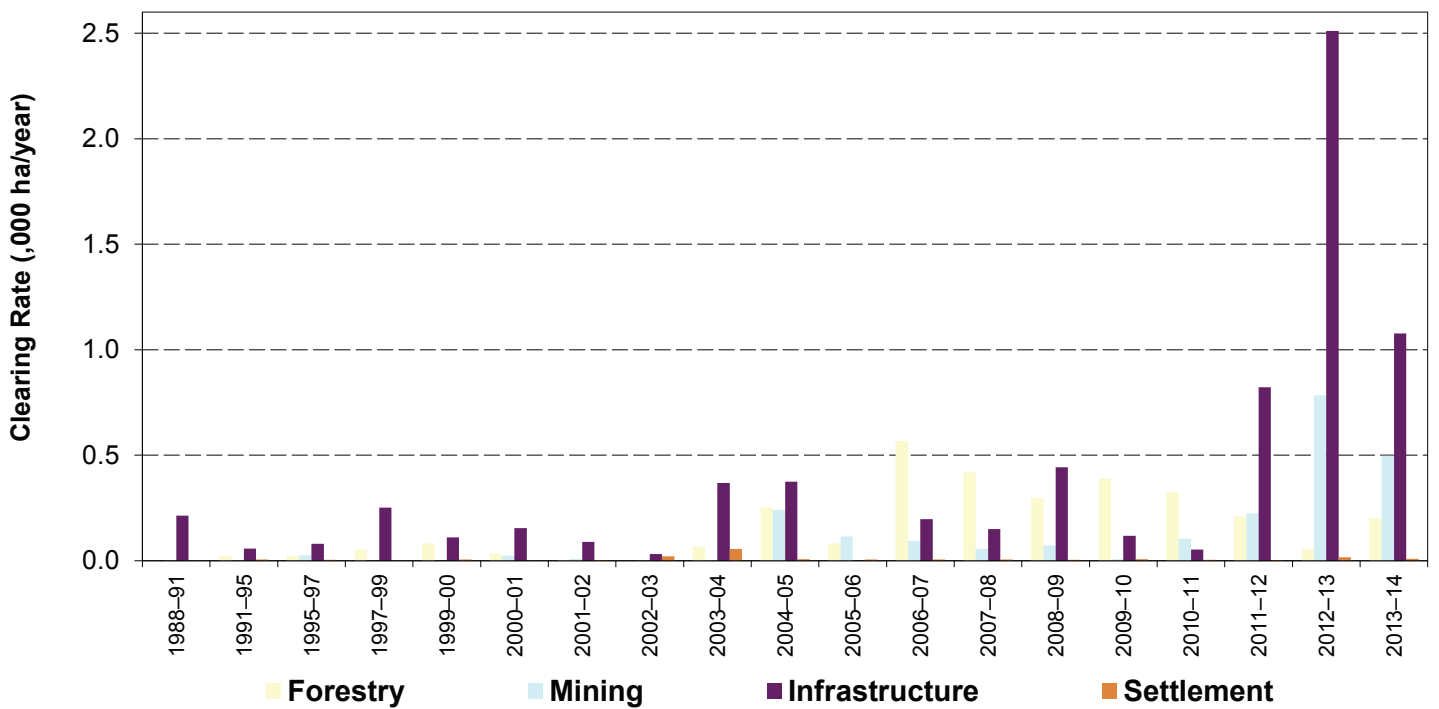
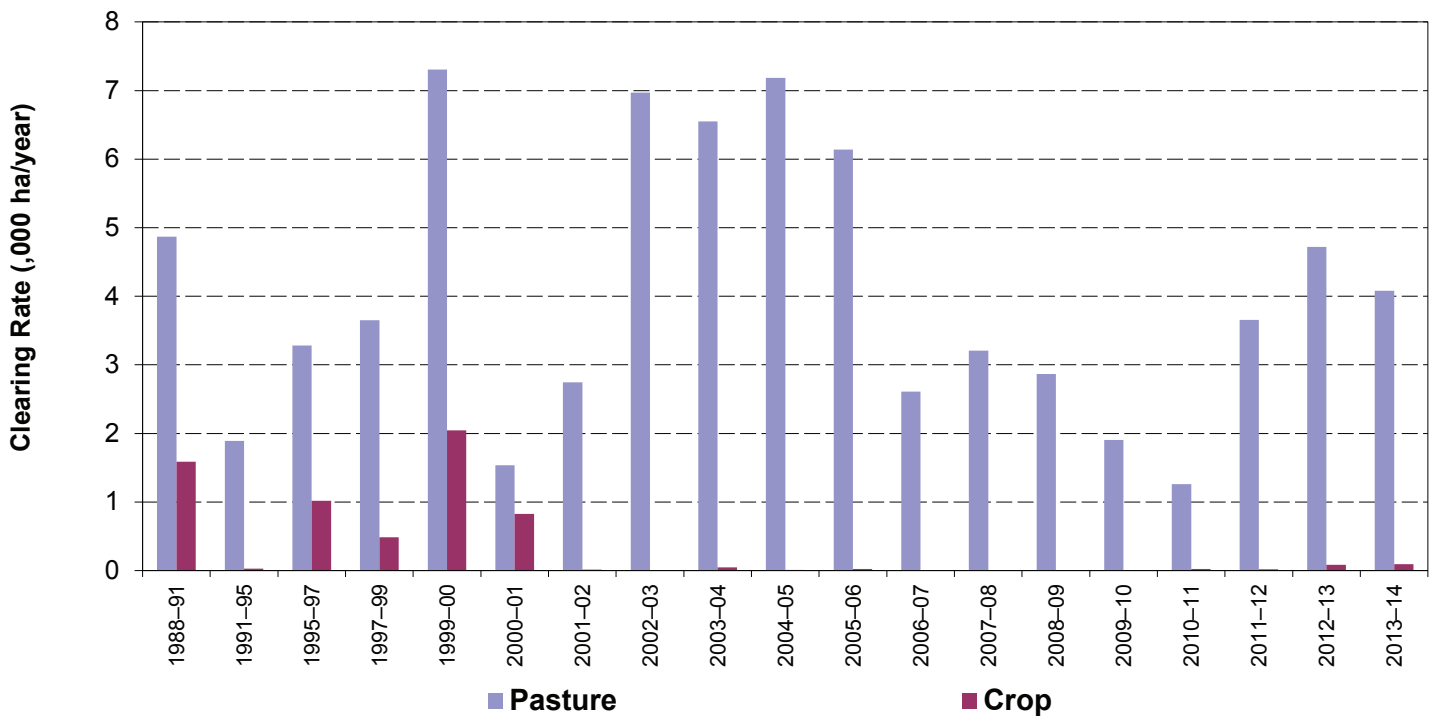


Figure 4. Woody vegetation clearing rates (,000 ha/year) in the Condamine region by replacement land cover.

The Queensland Government supports and encourages the dissemination and exchange of information. However, copyright protects this document. The State of Queensland has no objection to this material being reproduced, made available online or electronically, provided it is for your personal, non-commercial use, or use within your organisation; the material remains unaltered; and the State of Queensland is recognised as the owner.
 © The State of Queensland 2015.

Prepared by
 Remote Sensing Centre
 Science Division
 Department of Science, Information Technology and Innovation
 PO Box 5078
 Brisbane Queensland 4001
 Phone: 13 QGOV (13 74 68)

The Queensland Government supports and encourages the dissemination and exchange of its information. The copyright in this publication is licensed under a Creative Commons Attribution 3.0 Australia (CC BY) licence



Under this licence you are free, without having to seek permission from DSITI, to use this publication in accordance with the licence terms. You must keep intact the copyright notice and attribute the State of Queensland, Department of Science, Information Technology and Innovation as the source of the publication. For more information on this licence visit <http://creativecommons.org/licenses/by/3.0/au/deed.en>