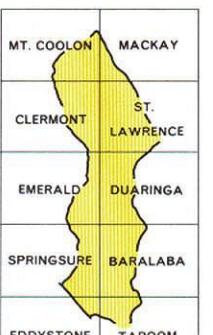
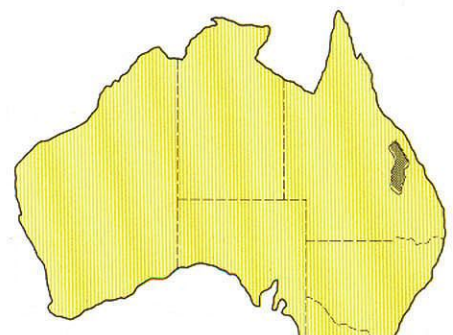
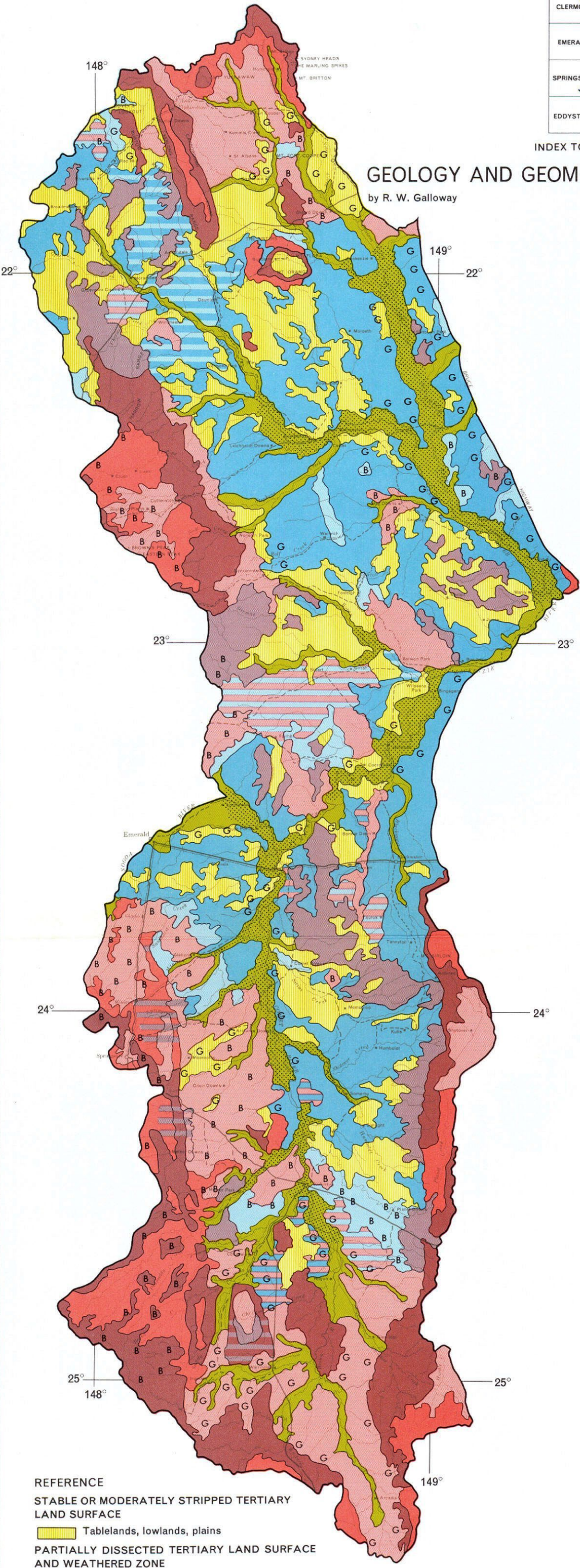


ISAAC-COMET AREA QUEENSLAND AUSTRALIA

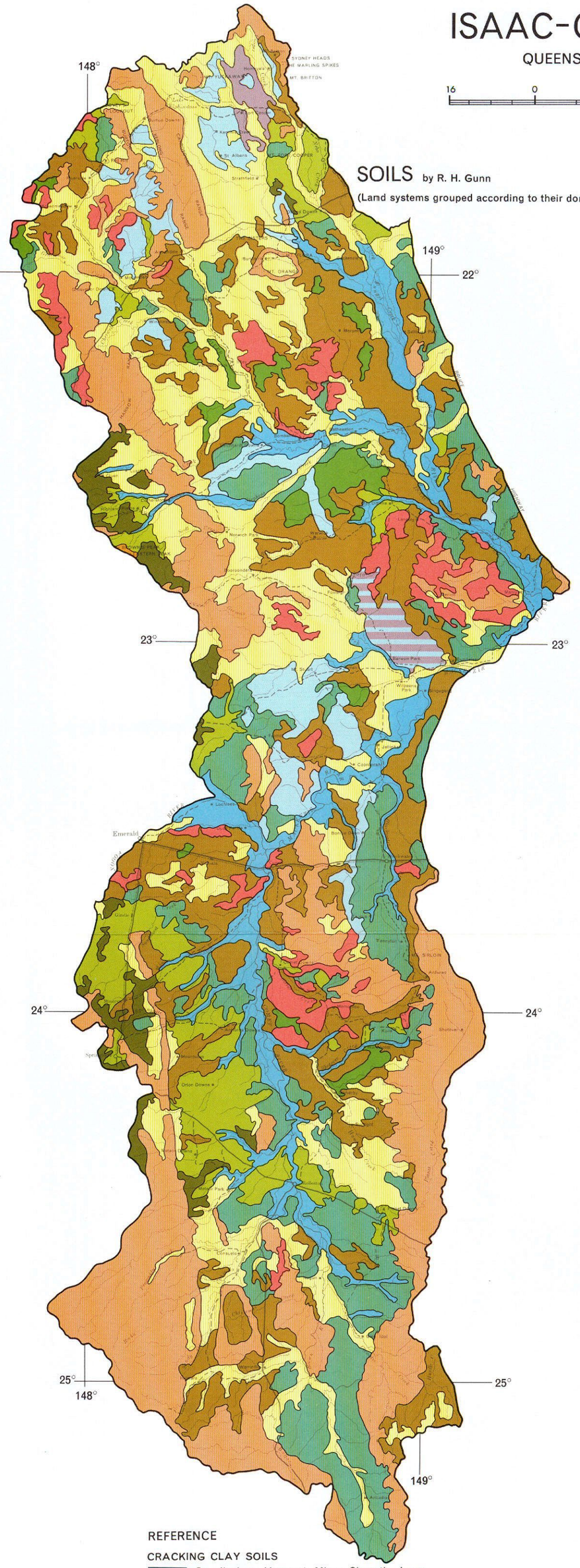
16 0 16 32 48
MILES



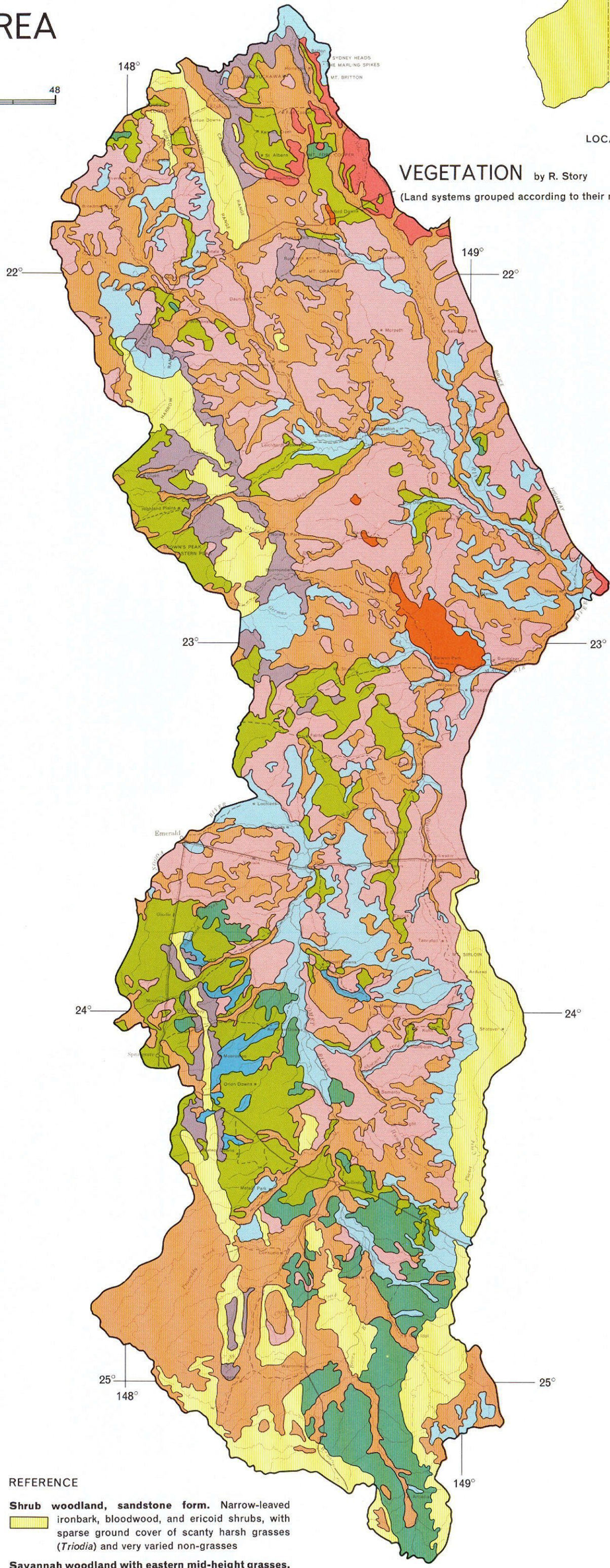
GEOLOGY AND GEOMORPHOLOGY by R. W. Galloway



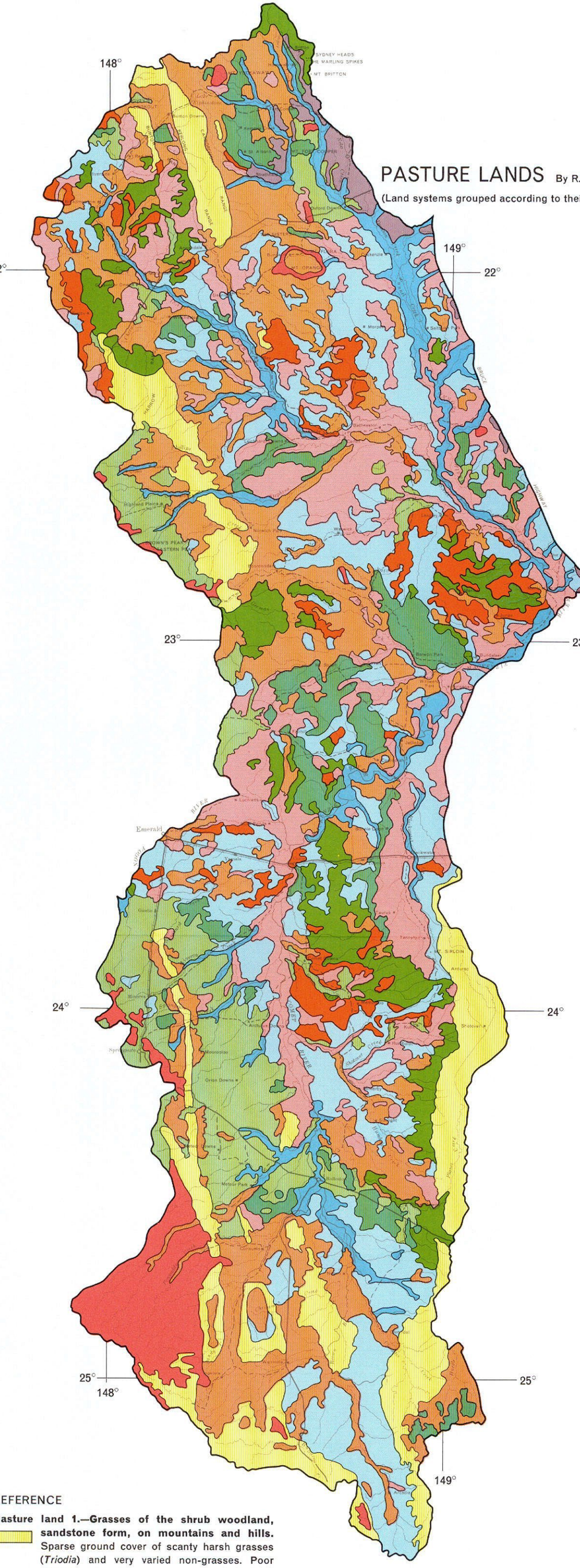
SOILS by R. H. Gunn (Land systems grouped according to their dominant soil families)



VEGETATION by R. Story (Land systems grouped according to their main vegetation types)



PASTURE LANDS By R. Story (Land systems grouped according to their grazing value)



REFERENCE
STABLE OR MODERATELY STRIPPED TERTIARY LAND SURFACE
PARTIALLY DISSECTED TERTIARY LAND SURFACE AND WEATHERED ZONE
DEPOSITIONAL SURFACES WITHIN THE TERTIARY WEATHERED ZONE
EROSIONAL SURFACES RISING ABOVE OR CUT BELOW THE TERTIARY WEATHERED ZONE
POST-TERTIARY ALLUVIUM
Basalt
Gravelly areas

REFERENCE
CRACKING CLAY SOILS
TEXTURE-CONTRAST SOILS
RED AND YELLOW EARTHS
SHALLOW ROCKY SOILS

REFERENCE
Shrub woodland, sandstone form. Narrow-leaved ironbark, bloodwood, and ericoid shrubs, with sparse ground cover of scanty harsh grasses (Triodia) and very varied non-grasses.
Savannah woodland with eastern mid-height grasses.
Savannah woodland with downs grasses. Bloodwood and ironbark with dense Dichanthium, Heteropogon, Bothriochloa.
Savannah woodland with eastern mid-height or downs grasses. Box and ironbark with Bothriochloa, Heteropogon, Aristida, Chrysopogon; or bloodwood and ironbark with dense Dichanthium, Heteropogon, Bothriochloa.
Scrub. Brigalow, softwood, or lancewood and bendea, with Paspalidium, Aristida, Brachyachne, Chloris, Calyptochloa, Leptochloa, Ancistrachne.
Downs, or savannah woodland with downs grasses. Dense grassland of Dichanthium, Heteropogon, Bothriochloa, often with widely scattered silver-leaved ironbark and bloodwood.
Savannah woodland with eastern mid-height grasses, or mixed shrub woodland. Box and ironbark with Bothriochloa, Heteropogon, Aristida, Chrysopogon; or box, ironbark, and shrubs with the same grasses or with Paspalidium, Aristida, Brachyachne, Chloris, Calyptochloa, Leptochloa, Ancistrachne.

Savannah woodland with eastern mid-height grasses, or scrub. Box and ironbark with Bothriochloa, Heteropogon, Aristida, Chrysopogon; or brigalow softwood, or lancewood and bendea, with Paspalidium, Aristida, Brachyachne, Chloris, Calyptochloa, Leptochloa, Ancistrachne.
Scrub, or mixed shrub woodland. Brigalow, softwood, or lancewood and bendea, with Paspalidium, Aristida, Brachyachne, Chloris, Calyptochloa, Leptochloa, Ancistrachne; or box, ironbark, and shrubs with the same grasses or with Bothriochloa, Heteropogon, Aristida, Chrysopogon.
Scrub, mixed shrub woodland, or savannah woodland with downs grasses. Brigalow, softwood, or lancewood and bendea, with Paspalidium, Aristida, Brachyachne, Chloris, Calyptochloa, Leptochloa, Ancistrachne; or box, ironbark, and shrubs with the same grasses or with Bothriochloa, Heteropogon, Aristida, Chrysopogon; or bloodwood and ironbark with dense Dichanthium, Heteropogon, Bothriochloa.

REFERENCE
Pasture land 1.—Grasses of the shrub woodland, sandstone form, on mountains and hills. Sparse ground cover of scanty harsh grasses (Triodia) and very varied non-grasses. Poor grazing.
Pasture land 2.—Eastern mid-height grasses on mountains. Dense Bothriochloa, Heteropogon, Themeda, Aristida. Good grazing, but access difficult.
Pasture land 3.—Eastern mid-height grasses on lowlands. Bothriochloa, Heteropogon, Aristida, Chrysopogon. Good grazing.
Pasture land 4.—Downs on lowlands. Dense Dichanthium, Heteropogon, Bothriochloa. Good to excellent grazing.
Pasture land 5.—Scrub grasses on lowlands. Sparse Paspalidium, Aristida, Brachyachne, Chloris, Calyptochloa, Leptochloa, Ancistrachne. Poor grazing.
Pasture land 6.—Downs, or eastern mid-height grasses, on lowlands. Dense Dichanthium, Heteropogon, Bothriochloa; or Bothriochloa, Heteropogon, Aristida, Chrysopogon. Good grazing.
Pasture land 7.—Eastern mid-height grasses, some downs, on lowlands. Bothriochloa, Heteropogon, Aristida, Chrysopogon, some dense Dichanthium, Heteropogon, Bothriochloa. Good grazing.

Pasture land 8.—Scrub grasses, or eastern mid-height grasses, on mountains and hills. Sparse Paspalidium, Aristida, Brachyachne, Chloris, Calyptochloa, Leptochloa, Ancistrachne; or Bothriochloa, Heteropogon, Aristida, Chrysopogon. Fair to good grazing.
Pasture land 9.—Scrub grasses, or eastern mid-height grasses, on lowlands and tablelands. Sparse Paspalidium, Aristida, Brachyachne, Chloris, Calyptochloa, Leptochloa, Ancistrachne; or Bothriochloa, Heteropogon, Aristida, Chrysopogon. Fair to good grazing.
Pasture land 10.—Scrub grasses, some eastern mid-height grasses, on lowlands. Sparse Paspalidium, Aristida, Brachyachne, Chloris, Calyptochloa, Leptochloa, Ancistrachne; or Bothriochloa, Heteropogon, Aristida, Chrysopogon. Fair to good grazing.
Pasture land 11.—Downs, or scrub grasses, on lowlands. Dense Dichanthium, Heteropogon, Bothriochloa; or sparse Paspalidium, Aristida, Brachyachne, Chloris, Calyptochloa, Leptochloa, Ancistrachne. Fair to good grazing.