

# NOTICE TO MARINERS



## 248 (T) of 2025

---

Issued by Brisbane Maritime Region on 12 June 2025

**Area:** Brisbane pilotage area

**Locality:** Mooloolah River bar

**Activity:** shoaling and dredging

Mariners are advised that:

a hydrographic survey of the Mooloolah River and its coastal bar on Monday 9 June 2025, shows the entrance channel with minimum depth of approximately 2.5m across the white sector, 2.4m at the outer edge of the red sector off the eastern side of the entrance at Lowest Astronomical Tide.

Map S11-737 attached, shows the current channel. Copies of the survey plan are available from the Sunshine Coast office of Maritime Safety Queensland at Mooloolaba.

The dredge CSD Navua is on station and will be undertaking dredging operations, weather permitting. The dredge will exhibit day shapes and lights as required by the Collision Regulations. Whilst operating the dredge master will maintain a listening watch on VHF Channels 16 and 82. Mariners must carefully consider the position of the 'CSD Navua' its floating pipeline and anchors when navigating the bar. They should contact the dredge master to ensure it is safe to transit past the dredge.

Masters of smaller recreational boats, personal watercraft, and passive craft like kayaks and canoes must remain mindful of the heightened risk to larger vessels navigating the river entrance and coastal bar. Except for entering and departing the river, these smaller vessels and passive craft should keep well clear of the coastal bar and not use it for recreational purposes.

**Mariners must remain mindful that coastal bars are dynamic in nature with conditions constantly changing. Mariners must plan their crossing of the Mooloolah Bar, having careful consideration to prevailing conditions, the state of the tide, and the draught of their vessels. The coastal bar must be navigated with extreme caution.**

Mariners are also reminded that the Mooloolah River entrance is defined as a coastal bar. This means that a lifejacket must be worn when boating alone or only with children under 12 years on an open boat less than 4.8m in length whilst underway; crossing designated coastal bars on an open ship and on an open area of a boat of any length and on certain craft; children one year or more and under 12 years are on an open boat or an open area of a boat of any length whilst underway; and night time boating, between sunset and sunrise on an open boat less than 4.8m in length whilst underway.

**Refer to notice:** none

**Cancel notice:** 223(T) of 2025

**AUS charts affected:** 236

**ENC Cells affected:** AU5MLL01

---

Latitude and longitude positions are on WGS84 horizontal datum and are compatible with GDA2020 datum.

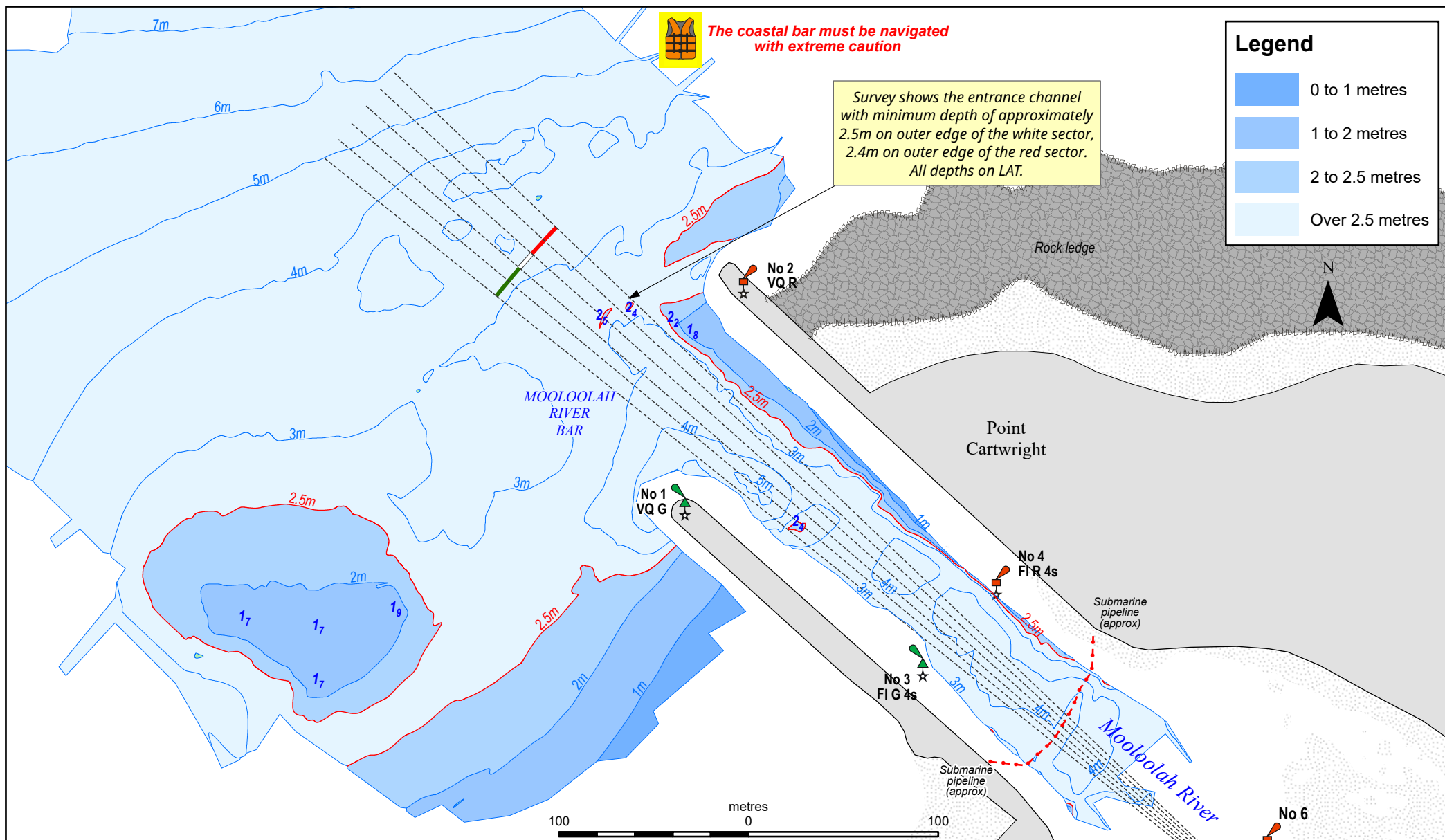
**For further information about this notice, please contact:**

The Brisbane Regional Harbour Master's office:

Phone: 07 3632 7500

Email: [vtsbrisbane@msq.qld.gov.au](mailto:vtsbrisbane@msq.qld.gov.au)

**Notice authorised by:** Regional Harbour Master (Brisbane) - Maritime Safety Queensland



To be used with appropriate NTM  
 © The State of Queensland 2025  
 Transport and Main Roads



Prepared 9 June 2025  
**Maritime Safety Queensland**  
 Port Operations and VTS - Spatial Services

## QUEENSLAND NOTICE TO MARINERS

Issued by Maritime Safety Queensland

### MOOLOOLAH RIVER BAR

Surveyed 9 June 2025

QNTM updates also available  
 from [www.msq.qld.gov.au](http://www.msq.qld.gov.au)  
 Datum: GDA2020 horizontal. LAT vertical  
 Map projection: UTM (MGA zone 56)

**Map S11-737**

