

NOTICE TO MARINERS



105 of 2024

Issued by Brisbane Maritime Region on 7 March 2024

Area: Brisbane pilotage area
Locality: Scarborough Harbour, Scarborough
Activity: Navigation Aid established

Mariners are advised that:

The Scarborough Port Entry Light (PEL) with centreline bearing 183° (T) and light characteristic DIR RWG has been established in position latitude 27°11.581'S, longitude 153°06.131'E.

The centre sector displays a white light with 1' arc.
The western sector is 1' arc and displays green flashing lights.
The eastern sector is 1' arc and displays red flashing lights.

Chartlet S11-681 provides details on the sectors.

Mariners should navigate the area with caution.

Refer to notice: none
Cancel notice: 102(T) of 2023

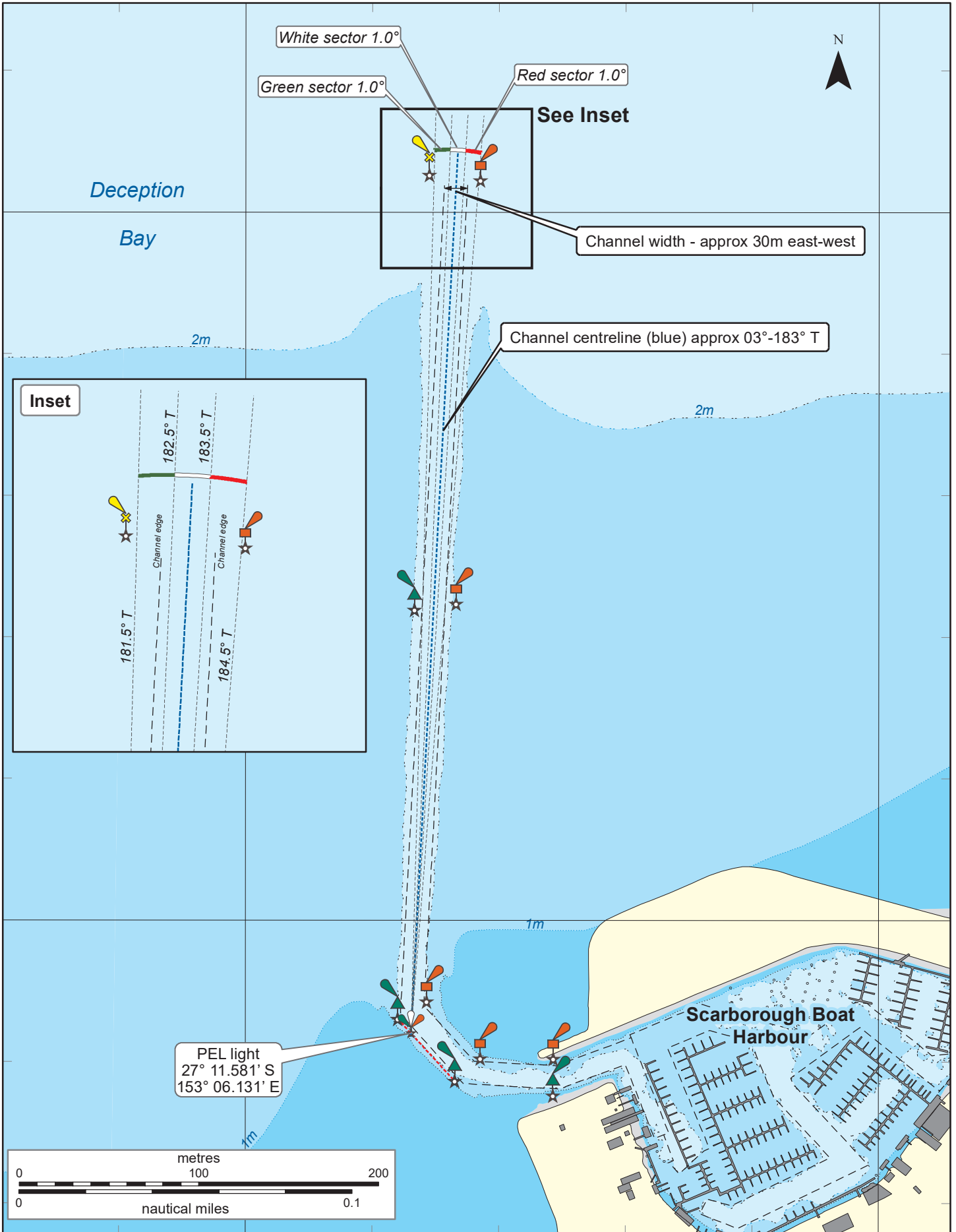
AUS charts affected: AUS 236
ENC Cells affected: AU5SCR01, AU5BNE01

Latitude and longitude positions are on WGS84 horizontal datum and are compatible with GDA2020 datum.

For further information about this notice, please contact:

The Brisbane Regional Harbour Master's office:
Phone: 07 3632 7500 Email: vtsbrisbane@msq.qld.gov.au

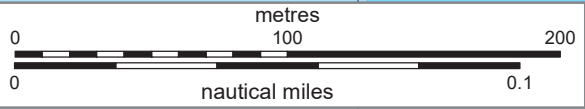
Notice authorised by: Regional Harbour Master (Brisbane) - Maritime Safety Queensland



27°11'S

27°11.5'S

PEL light
 27° 11.581' S
 153° 06.131' E



To be used with appropriate NTM
 © The State of Queensland 2024
 Transport and Main Roads



Prepared 7 March 2024
 Maritime Safety Queensland
 Spatial Services

QUEENSLAND NOTICE TO MARINERS

Issued by Maritime Safety Queensland

PEL LIGHT ESTABLISHED

**SCARBOROUGH BOAT HARBOUR
 BRISBANE**

QNTM updates also available
 from www.msq.qld.gov.au
 Datum: GDA2020 horizontal. LAT vertical
 Map projection: UTM (MGA zone 56)

Map: S11 - 681



**Queensland
 Government**