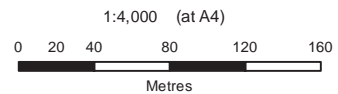
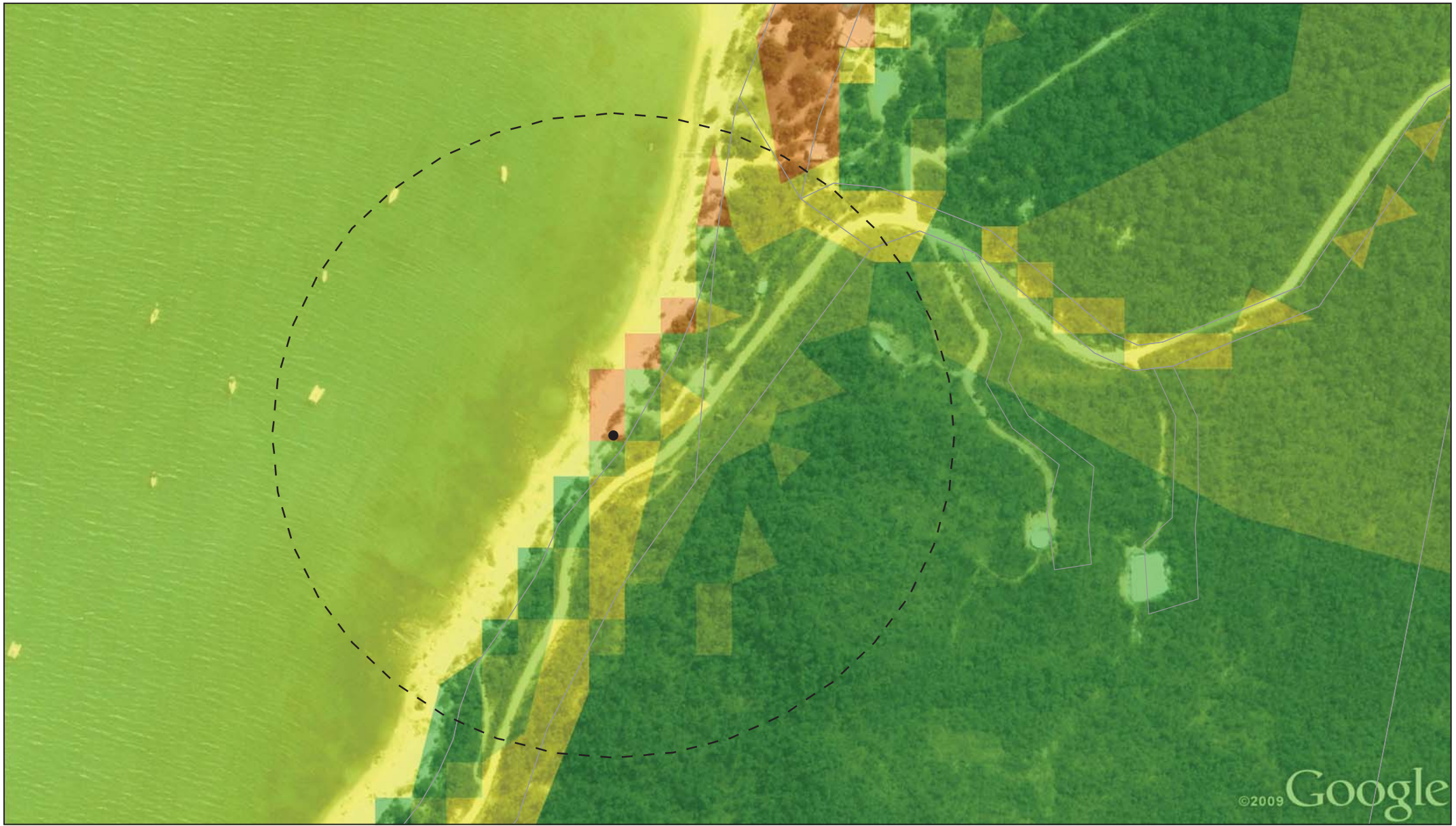


Table 35 Priority 2 site - boat ramp Cape Gloucester

Site name	Boat ramp Cape Gloucester (potential new site)
Location	Cape Gloucester
RBC	Whitsunday (low demand RBC)
Site characteristics	<p>The Cape Gloucester site comprises two potential locations where a new boat ramp may be sited.</p> <p>Neither site currently has any land based facilities.</p> <p>The proposed boat ramp will provide access to the Corel Sea, Gloucester Island National Park and surrounding islands.</p>
Consultation feedback	Two potential site options have been identified through the consultation process. The preferred location will be determined as part of the detailed site assessment.
Proposed works	<ul style="list-style-type: none"> ▶ new boat ramp – two lanes minimum ▶ car parking – number will be dependent on the number of lanes provided ▶ provision of a floating walkway/pontoon ▶ associated land based facilities. <p>The site constraints are shown on Figure 18.</p>
rationale	<p>This site has suitability for a new facility however there are a number of issues that would need to be resolved through a detailed site assessment process, including:</p> <ul style="list-style-type: none"> ▶ the land is relatively unconstrained however it appears that some dredging may be required; and ▶ an access road is required to be constructed. <p>The site is situated within an Ecotourist resort area and will help demand for the Bowen area. The location has two potential site options, further feasibility assessment of both sites will be required.</p>



Geographic Coordinate System
Horizontal Datum: Geocentric Datum of Australia 1994

LEGEND

● Site Location

▭ Cadastre

⊖ Site Location Buffer (250m)

Suitability Surface

 1 - 2	 4 - 6
 2 - 3	 6 - 10
 3 - 4	



Recreational Boating Facilities
Demand Forecasting Study

Job Number 41-22459
Revision A
Date 26 AUG 2011

Site Constraints
Priority 2 Site - Cape Gloucester **Figure 18**

G:\41\22459\GIS\Maps\MXD\Medium Priority Sites\Final\41_22459_01_Central_MP_Site_03.mxd
© 2011. While GHD has taken care to ensure the accuracy of this product, GHD, DERM, Google Earth and GA make no representations or warranties about its accuracy, completeness or suitability for any particular purpose. GHD, DERM, Google Earth and GA cannot accept liability of any kind (whether in contract, tort or otherwise) for any expenses, losses, damages and/or costs (including indirect or consequential damage) which are or may be incurred as a result of the product being inaccurate, incomplete or unsuitable in any way and for any reason.
Data source: Imagery - Google Earth Pro (Date Extracted 17/12/2010); GA: Placenames, Seas/2007; DERM: Cadastre/2010; GHD: Suitability Surface, Site Location, Site Location Buffer (250m)/2010. Created by: MS, EA

Level 4, 201 Charlotte St Brisbane QLD 4000 T 61 7 3316 3000 F 61 7 3316 3333 E bnemail@ghd.com W www.ghd.com
Based on or contains data provided by the State of QLD (DERM) [2010]. In consideration of the State permitting use of this data you acknowledge and agree that the State gives no warranty in relation to the data (including accuracy, reliability, completeness, currency or suitability) and accepts no liability (including without limitation, liability in negligence) for any loss, damage or costs (including consequential damage) relating to any use of the data. Data must not be used for marketing or be used in breach of the privacy laws.