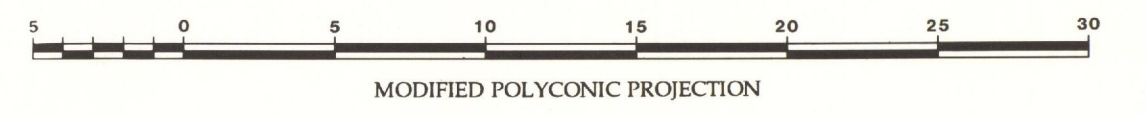


MORETON REGION LAND RESOURCE AREAS

SCALE 1: 250 000



BASE MAP adapted from 1: 500 000 map 'South East Queensland', supplied by Forest Service, Department of Primary Industries, Brisbane.

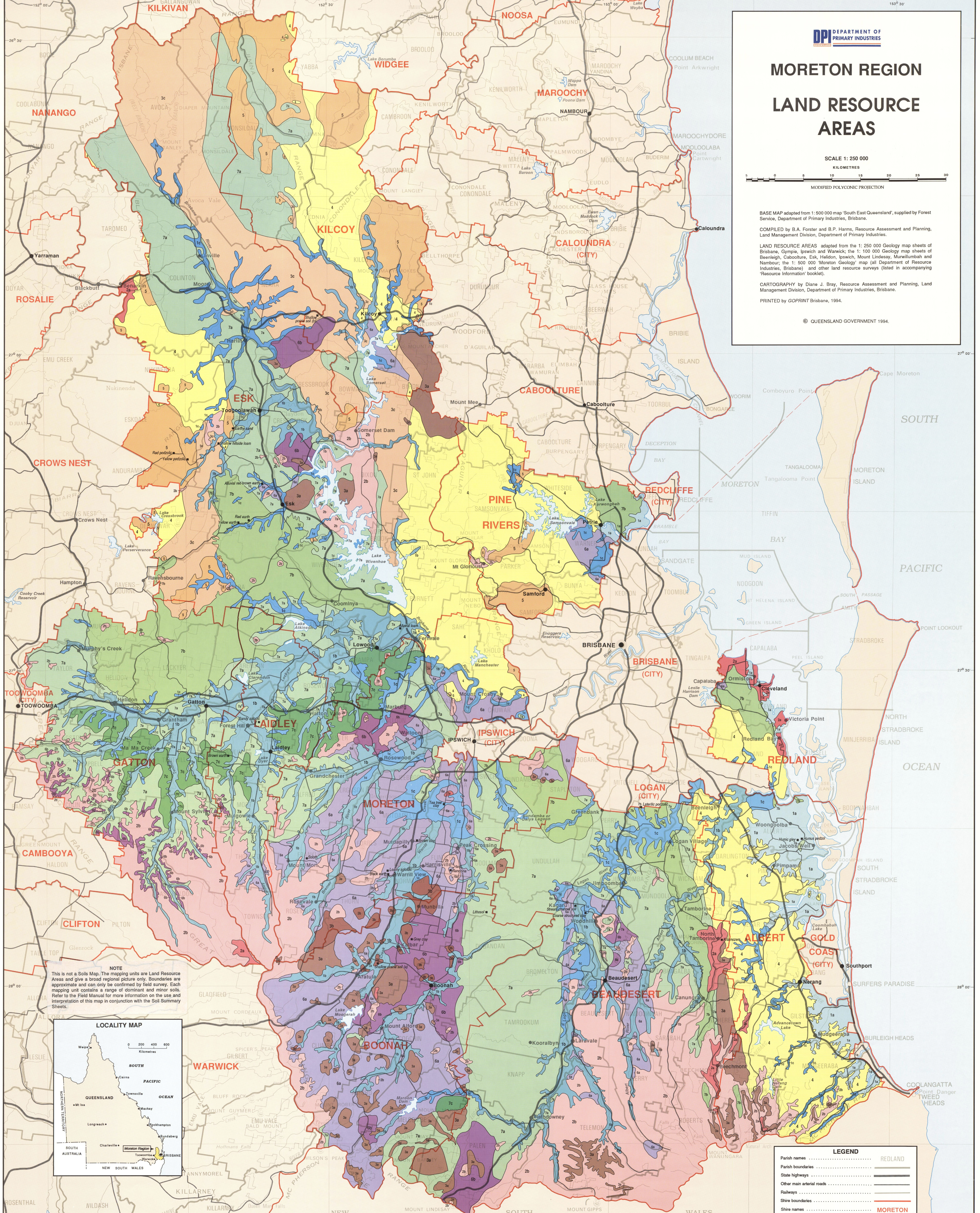
COMPILED by B.A. Forster and B.P. Harms, Resource Assessment and Planning, Land Management Division, Department of Primary Industries.

LAND RESOURCE AREAS adapted from the 1: 250 000 Geology map sheets of Brisbane, Gympie, Ipswich and Warwick; the 1: 100 000 Geology map sheets of Beenleigh, Caboolture, Esk, Helidon, Ipswich, Mount Lindsey, Murwillumbah and Nambour; the 1: 500 000 'Moreton Geology' map (all Department of Resource Industries, Brisbane) and other land resource surveys (listed in accompanying 'Resource Information' booklet).

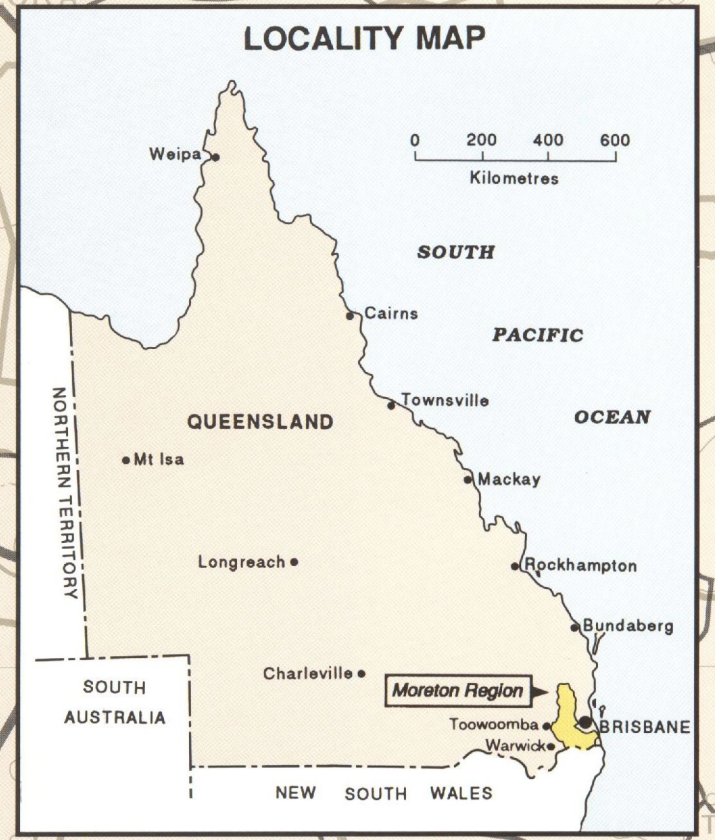
CARTOGRAPHY by Diane J. Bray, Resource Assessment and Planning, Land Management Division, Department of Primary Industries, Brisbane.

PRINTED by GOPRINT Brisbane, 1994.

© QUEENSLAND GOVERNMENT 1994.



NOTE
This is not a Soils Map. The mapping units are Land Resource Areas and give a broad regional picture only. Boundaries are approximate and can only be confirmed by field survey. Each mapping unit contains a range of dominant and minor soils. Refer to the Field Manual for more information on the use and interpretation of this map in conjunction with the Soil Summary Sheets.



LEGEND	
Parish names REDLAND
Parish boundaries
State highways
Other main arterial roads
Railways
Shire boundaries
Shire names MORETON

REFERENCE

LAND RESOURCE AREA	LANDFORM	SOILS	GEOLOGY	VEGETATION	AREA (ha)	LAND RESOURCE AREA	LANDFORM	SOILS	GEOLOGY	VEGETATION	AREA (ha)	LAND RESOURCE AREA	LANDFORM	SOILS	GEOLOGY	VEGETATION	AREA (ha)
Coastal Plains 1a	Alluvial plains; swamps; sand dunes; tidal flats.	Humic gleys, humus podzols, solonchaks.	Estuarine clays, alluvium, dune sands.	Paper-barked tea tree open forest with cabbage tree palm, cork bark and various acalypts; tall shrubland of wallum banksia and swamp messmate; open heath, mangroves; saltmarsh. Eucalypt open forest on the higher terraces.	27 350	Volcanic Peaks 3a	Steep hills and mountains.	Litholsols, solochs, solodols, earthy sands (stony).	Trachyte, rhyolite.	Eucalypt open forest; some softwood scrub.	49 610	Forest Wallonee 6a	Undulating hills and rises; steep hills in the far south-west.	Grey and brown clays; loamy solochs, sandy solodols, solochs, red podzols, litholsols, redoxisols.	Shale, siltstone, mudstone, minor limestone (Walton Coal Measures, Ipswich Coal Measures).	Eucalypt open forest to woodland.	124 450
Fine Textured Alluvial Plains 1b	Broad alluvial plains.	Self-mulching black earths and grey clays, deep prairie soils, alluvial soils.	Quaternary alluvium derived from volcanic material (mainly basaltic), occasionally metamorphic rocks.	Scattered remnants of blue gum woodland.	129 080	Southern Intrusives 3b	Undulating hills and rises in the south.	Shallow prairie soils, red earths, non-caliche brown soils, litholsols, red podzols.	Syenite, diorite.	Eucalypt open forest to woodland.	7 740	Scrub Wallonee 6b	Undulating hills to steep hills.	Grey and brown clays, solochs.	Shale, siltstone, Midasitic sandstone (Walton Coal Measures).	Softwood scrub, generally with brigalow.	44 140
Mixed Alluvial Plains 1c	Alluvial plains.	Coarse structured clays, alluvial soils, solochs, solochs, red-brown earths, earthy sands, red earths.	Quaternary alluvium derived from a range of rock types (sedimentary, metamorphic, granite, acid volcanic).	Woodland to open forest of mainly blue gum, ironbark, Moreton Bay ash, gum-topped box; some areas of narrow leaf tree.	68 850	Northern Mixed Volcanics 3c	Rolling hills to steep mountains in the north.	Solochs, shallow prairie soils, litholsols, grey and brown clays, non-caliche brown soils.	Mixed volcanic, sedimentary and metamorphic rocks (the Nearta Volcanics, the Northbrook Beds and the Crossbrook Creek Formation).	Eucalypt open forest to woodland; some mixed rainforest.	121 770	Marburg Forest 7a	Undulating hills and rises; steep hills and mountains.	Sandy solochs, loamy solochs, solochs, yellow podzols, red podzols, non-caliche brown soils, litholsols.	Sandstone, siltstone, shale conglomerates. Predominantly sandstones of the Marburg Formation and Esk Beds (but also the Bryden Formation and the Marumbi Beds).	Eucalypt open forest; some areas of softwood scrub.	333 840
Red Volcanics 2a	Undulating plains and plateaus; hill slopes.	Krasnozems, xanthozems.	Deeply weathered basalt.	Mixed rainforest; waxy open forest.	10 780	Metamorphic Hills 4	Rolling hills to steep mountains.	Litholsols, solochs, shallow prairie soils, red podzols, yellow podzols, non-caliche brown soils, red earths.	Phyllite, schist, slate, chert, greywacke, meta-sandstones.	Eucalypt open forest; some mixed rainforest.	242 990	Helidon Forest 7b	Undulating to steep hills.	Red earths, yellow earths, red podzols, yellow podzols, earthy sands, litholsols.	Sandstone, siltstone, shale, conglomerate (Helidon, Woogaroo and Landsborough Sandstones).	Eucalypt open forest to woodland.	111 630
Basaltic Uplands 2b	Steep mountains, hills and rises.	Shallow black earths and prairie soils, litholsols, non-caliche brown soils.	Basalt, andesite, diorite, gabbro.	Eucalypt open forest to woodland; some mixed rainforest.	190 430	Granite Hills 5	Rolling hills and mountains.	Yellow podzols, red podzols, solochs, solochs, earthy sands, litholsols.	Granite, granodiorite, adamellite, tonalite, diorite.	Eucalypt open forest.	71 690	Marburg Scrub 7c	Rolling low hills to steep hills.	Brown earths, red earths, earthy sands, sandy solochs, red podzols, solochs.	Sandstone (Mt Ma Creek member and parts of the Heller Creek member of the Marburg Formation).	Softwood scrub, with or without brigalow.	31 570

■ Alluvial loam Soil group name and representative site location (used for soil photograph)