

Land cover change in the **Condamine** region 2011–12

Summary

For the 2011–12 era, the Condamine region clearing rate almost tripled, increasing from 1 769 hectares per year (ha/yr) to 4 935 ha/yr. This is the highest clearing rate for the region since 2005–06.

The clearing rate for remnant woody vegetation in the Condamine region in the 2011–12 era increased to 1 390 ha/yr, although the proportion was only 28% of total clearing.

The dominant replacement land cover class continued to be pasture, representing 74% of the total woody vegetation clearing in the region. Clearing to Infrastructure jumped to 823 ha/yr, being 17% of total clearing – the highest recorded rate on record from 1988–2012.

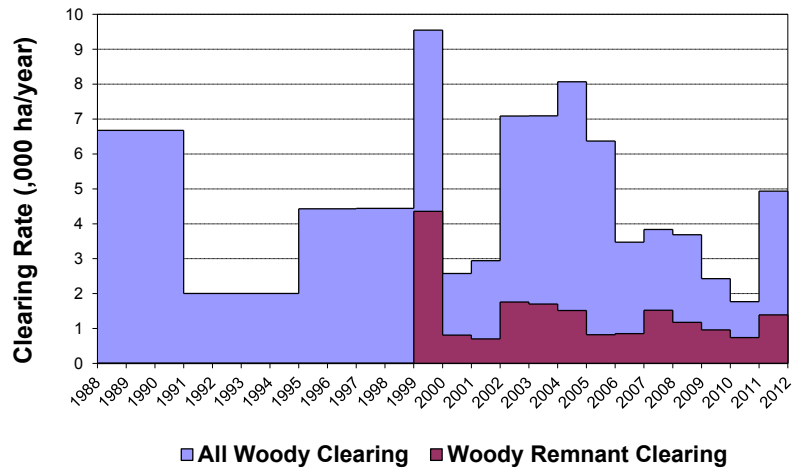


Figure 1. Woody vegetation clearing rates in the Condamine region.

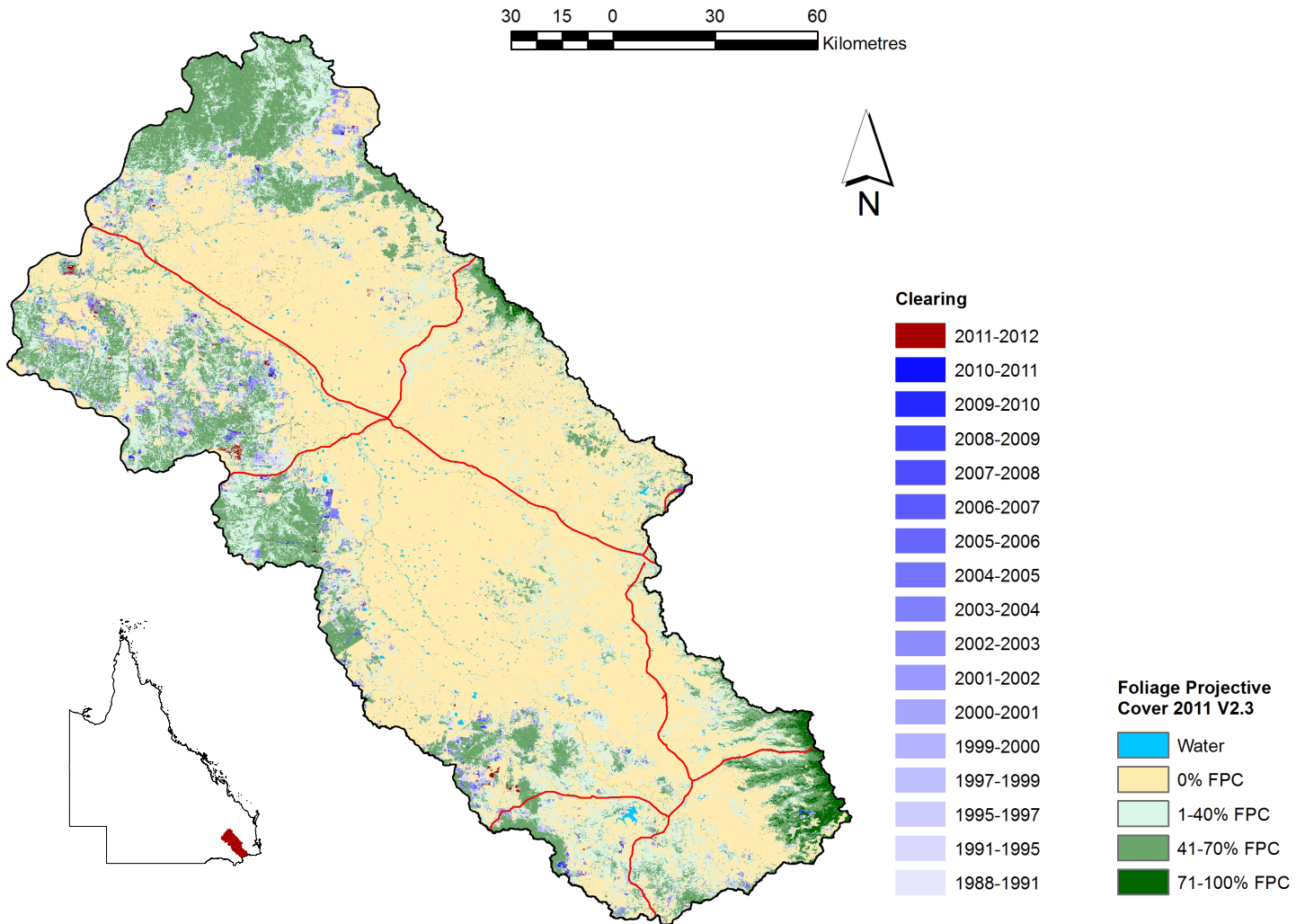


Figure 2. Woody vegetation clearing for each change period.

Woody vegetation clearing by remnant status

Table 1. Remnant and non-remnant woody vegetation clearing rates in the Condamine region.

Period	Woody vegetation clearing rate (,000 ha/yr) of		
	Non-remnant woody	Remnant woody*	Total woody
1999–00	5.191	4.356	9.547
2000–01	1.765	0.810	2.576
2001–02	2.241	0.702	2.943
2002–03	5.329	1.758	7.087
2003–04	5.391	1.701	7.092
2004–05	6.553	1.515	8.068
2005–06	5.548	0.822	6.370
2006–07	2.620	0.853	3.473
2007–08	2.314	1.523	3.837
2008–09	2.510	1.176	3.686
2009–10	1.468	0.960	2.428
2010–11	1.020	0.748	1.768
2011–12	3.545	1.390	4.935

* Regional ecosystem remnant mapping prior to 1999 not used in this analysis.

Woody vegetation clearing by tenure

Table 2. Woody vegetation clearing rates in the Condamine region by tenure.

Period	Woody vegetation clearing rate (,000 ha/yr) on				
	Freehold	Leasehold	Reserves	Other tenures	Total
1988–91	6.119	0.464	0.086	0.006	6.675
1991–95	1.872	0.117	0.014	0.000	2.003
1995–97	4.214	0.183	0.028	0.003	4.428
1997–99	4.068	0.233	0.129	0.010	4.441
1999–00	9.338	0.129	0.080	0.000	9.547
2000–01	2.494	0.024	0.057	0.000	2.576
2001–02	2.716	0.128	0.094	0.000	2.938
2002–03	6.866	0.158	0.062	0.000	7.086
2003–04	6.875	0.149	0.068	0.000	7.092
2004–05	7.717	0.187	0.164	0.000	8.068
2005–06	5.994	0.296	0.079	0.000	6.369
2006–07	3.097	0.118	0.258	0.000	3.473
2007–08	3.297	0.144	0.397	0.000	3.837
2008–09	3.328	0.064	0.294	0.000	3.686
2009–10	1.978	0.062	0.388	0.000	2.428
2010–11	1.397	0.044	0.327	0.000	1.768
2011–12	4.504	0.146	0.285	0.000	4.935

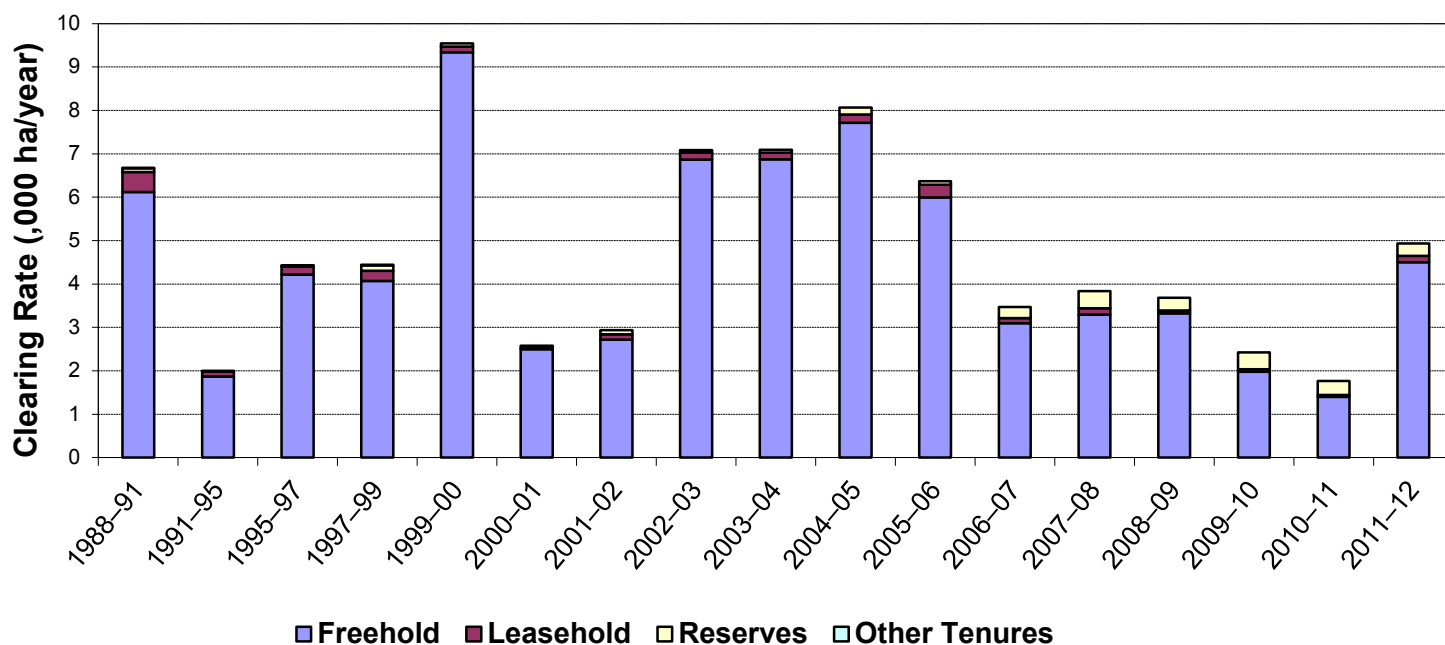


Figure 3. Woody vegetation clearing rates in the Condamine region by tenure.

Woody vegetation clearing by subcatchment

Table 3. Woody vegetation clearing rates in the Condamine region by subcatchment.

Woody vegetation clearing rate (,000 ha/yr) for	Period				
	2007–08	2008–09	2009–10	2010–11	2011–12
Balonne River	0.000	0.159	0.224	0.129	0.117
Condamine River	3.837	3.527	2.205	1.639	4.818
Total	3.837	3.686	2.429	1.768	4.935

Please refer to Figure 25 and Table 19 of the main report (DSITIA, 2014) for the location of each subcatchment.

Remaining woody vegetation

Table 4. Remaining woody vegetation in the Condamine region by subcatchment.

	Catchment area (,000 ha)	Area woody 2011 V2.3 (,000 ha)	% of catchment woody in 2011
Balonne River	101	81	80
Condamine River	2442	915	37
Total	2543	996	39

Woody vegetation clearing by replacement land cover

Table 5. Woody vegetation clearing rates in the Condamine region by replacement land cover.

Period	Woody vegetation clearing rate (,000ha/yr) for						
	Pasture	Crop	Forestry	Mining	Infrastructure	Settlement	Total*
1988–91	4.871	1.588	0.000	0.002	0.213	0.001	6.676
1991–95	1.888	0.029	0.022	0.001	0.057	0.006	2.004
1995–97	3.282	1.016	0.021	0.026	0.081	0.005	4.429
1997–99	3.650	0.485	0.053	0.000	0.252	0.001	4.441
1999–00	7.304	2.044	0.083	0.000	0.111	0.006	9.547
2000–01	1.535	0.828	0.034	0.024	0.154	0.001	2.576
2001–02	2.824	0.013	0.005	0.009	0.090	0.003	2.943
2002–03	7.033	0.000	0.000	0.000	0.032	0.022	7.087
2003–04	6.549	0.048	0.066	0.003	0.369	0.056	7.092
2004–05	7.184	0.007	0.253	0.242	0.375	0.008	8.068
2005–06	6.139	0.025	0.082	0.116	0.002	0.005	6.370
2006–07	2.607	0.000	0.567	0.094	0.197	0.006	3.473
2007–08	3.206	0.000	0.419	0.057	0.149	0.006	3.837
2008–09	2.868	0.002	0.297	0.072	0.443	0.004	3.686
2009–10	1.904	0.000	0.390	0.008	0.119	0.008	2.428
2010–11	1.260	0.022	0.325	0.104	0.053	0.005	1.769
2011–12	3.656	0.017	0.211	0.225	0.823	0.003	4.935

* Total excludes natural tree death.

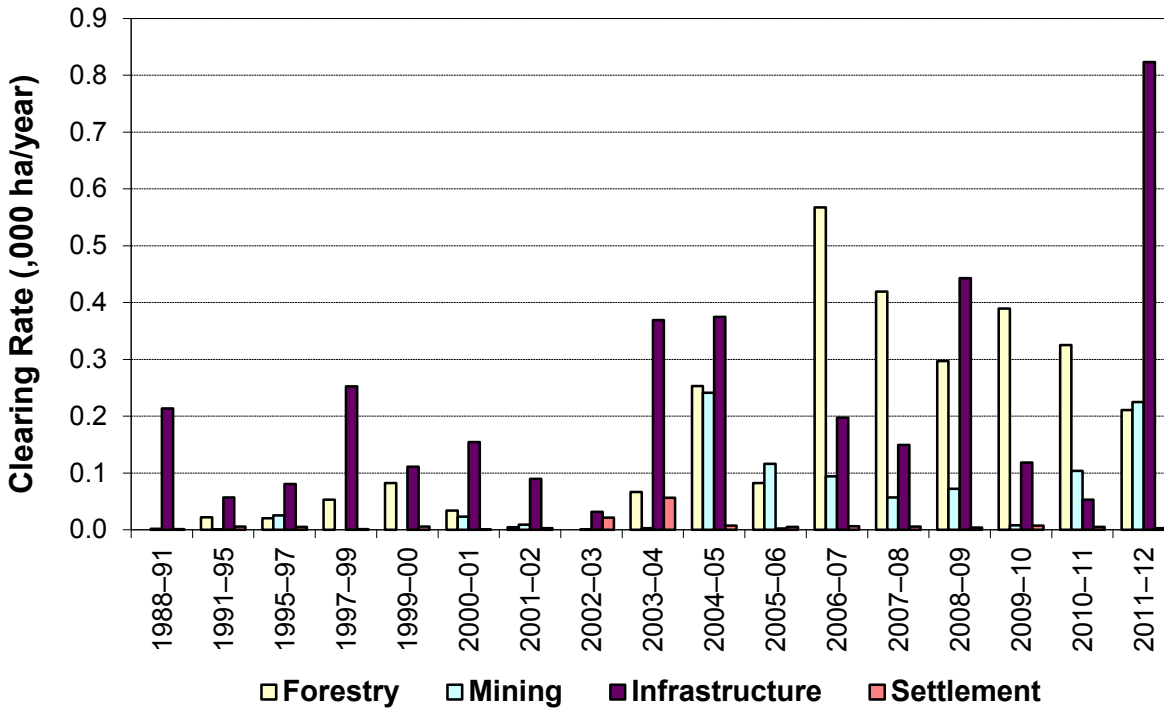
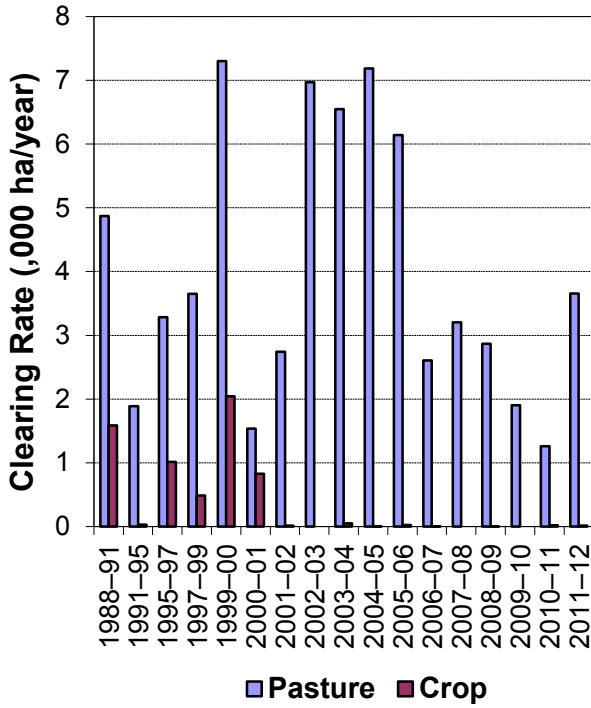


Figure 4. Woody vegetation clearing rates in the Condamine region by replacement land cover.

This fact sheet is 3 of 13 in a series detailing land cover change in Queensland's Natural Resource Management Regions. These fact sheets are addenda to the report: Department of Science, Information Technology, Innovation and the Arts (2014). *Land cover change in Queensland 2011-12: a Statewide Landcover and Trees Study (SLATS) Report, 2014*. Department of Science, Information Technology, Innovation and the Arts, Brisbane.

Please refer to this report for further background, methods and explanatory notes.

The Queensland Government supports and encourages the dissemination and exchange of information. However, copyright protects this document. The State of Queensland has no objection to this material being reproduced, made available online or electronically, provided it is for your personal, non-commercial use, or use within your organisation; the material remains unaltered; and the State of Queensland is recognised as the owner.

© The State of Queensland 2014.

For further information:
 Statewide Landcover and Trees Study
 41 Boggo Road
 Dutton Park QLD 4102
 Phone: 61 7 3170 5686
 Email: dave.harris@dsitia.qld.gov.au