

Land cover change in the Burnett Mary region 2011–12

Summary

In 2011–12, the woody vegetation clearing rate in the Burnett Mary region was 11 794 hectares per year (ha/yr) – a 30% increase from 9 097 ha/yr in 2010–11.

The replacement land cover class of pasture represented 65% of woody vegetation clearing detected in 2011–12. Woody vegetation clearing replaced with forestry dropped from the 2009–10 and 2010–11 rate of 4 000 ha/yr to a rate of 3 637 ha/yr.

Clearing of remnant woody vegetation in the region was higher than the three previous eras with 2 495 ha/yr of remnant vegetation cleared, although that only accounted for 21% of all clearing in the region.

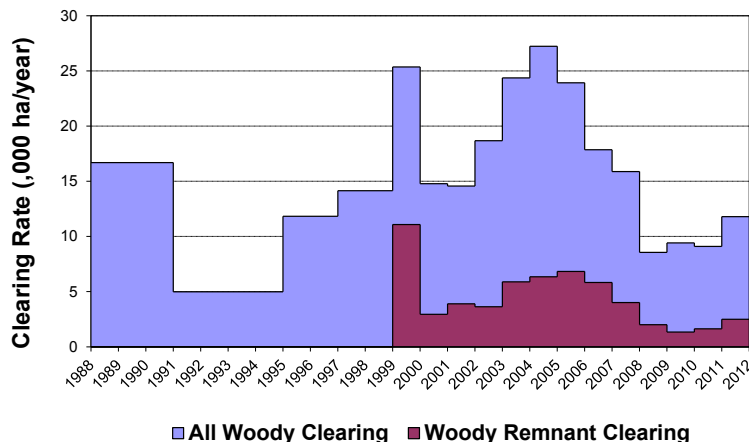


Figure 1. Woody vegetation clearing rates in the Burnett–Mary region.

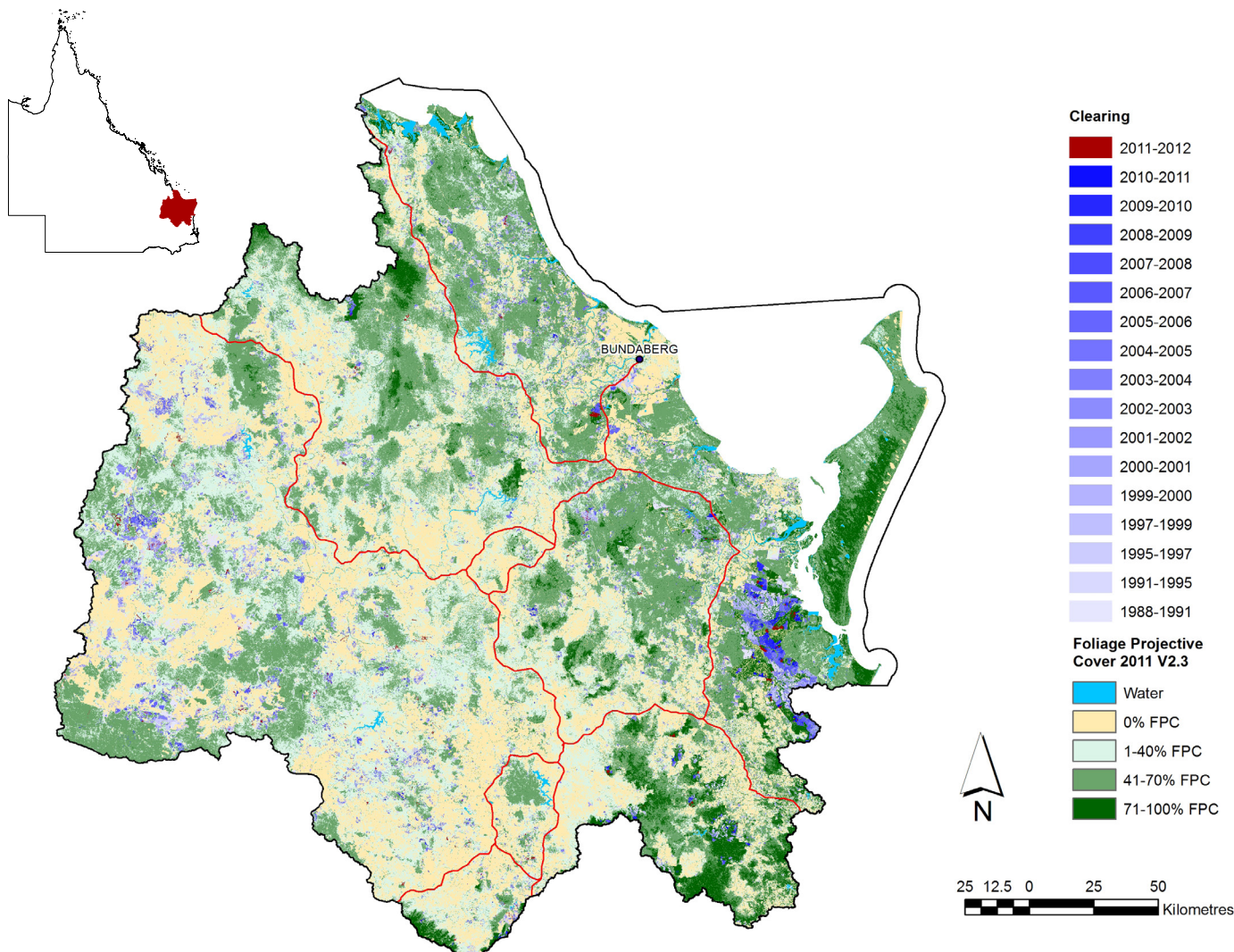


Figure 2. Woody vegetation clearing for each change period.

Woody vegetation clearing by remnant status

Table 1. Remnant and non-remnant woody vegetation clearing rates in the Burnett Mary region.

Period	Woody vegetation clearing rate (,000 ha/yr) of		
	Non-remnant woody	Remnant woody*	Total woody
1999–00	14.279	11.080	25.359
2000–01	11.836	2.945	14.781
2001–02	10.672	3.897	14.568
2002–03	15.045	3.630	18.675
2003–04	18.480	5.887	24.367
2004–05	20.886	6.346	27.231
2005–06	17.093	6.830	23.923
2006–07	12.028	5.830	17.857
2007–08	11.870	4.011	15.880
2008–09	6.553	2.003	8.556
2009–10	8.077	1.338	9.415
2010–11	7.459	1.630	9.097
2011–12	9.299	2.495	11.794

* Regional ecosystem remnant mapping prior to 1999 not used in this analysis.

Woody vegetation clearing by tenure

Table 2. Woody vegetation clearing rates in the Burnett Mary region by tenure.

Period	Woody vegetation clearing rate (,000 ha/yr) on				
	Freehold	Leasehold	Reserves	Other tenures	Total
1988–91	12.787	1.469	2.387	0.030	16.674
1991–95	2.888	0.509	1.581	0.005	4.983
1995–97	8.959	0.400	2.454	0.008	11.822
1997–99	10.328	0.692	3.113	0.006	14.138
1999–00	21.350	1.435	2.569	0.006	25.359
2000–01	10.059	0.657	4.065	0.001	14.781
2001–02	10.246	1.425	2.897	0.000	14.568
2002–03	13.399	2.056	3.218	0.003	18.675
2003–04	18.442	1.980	3.940	0.005	24.366
2004–05	22.192	1.073	3.965	0.001	27.231
2005–06	18.837	0.778	4.307	0.000	23.922
2006–07	11.399	1.942	4.514	0.001	17.857
2007–08	10.472	0.977	4.432	0.000	15.880
2008–09	4.934	1.093	2.529	0.000	8.556
2009–10	4.174	0.283	4.958	0.000	9.415
2010–11	4.706	0.481	3.909	0.000	9.096
2011–12	7.258	1.173	3.364	0.000	11.794

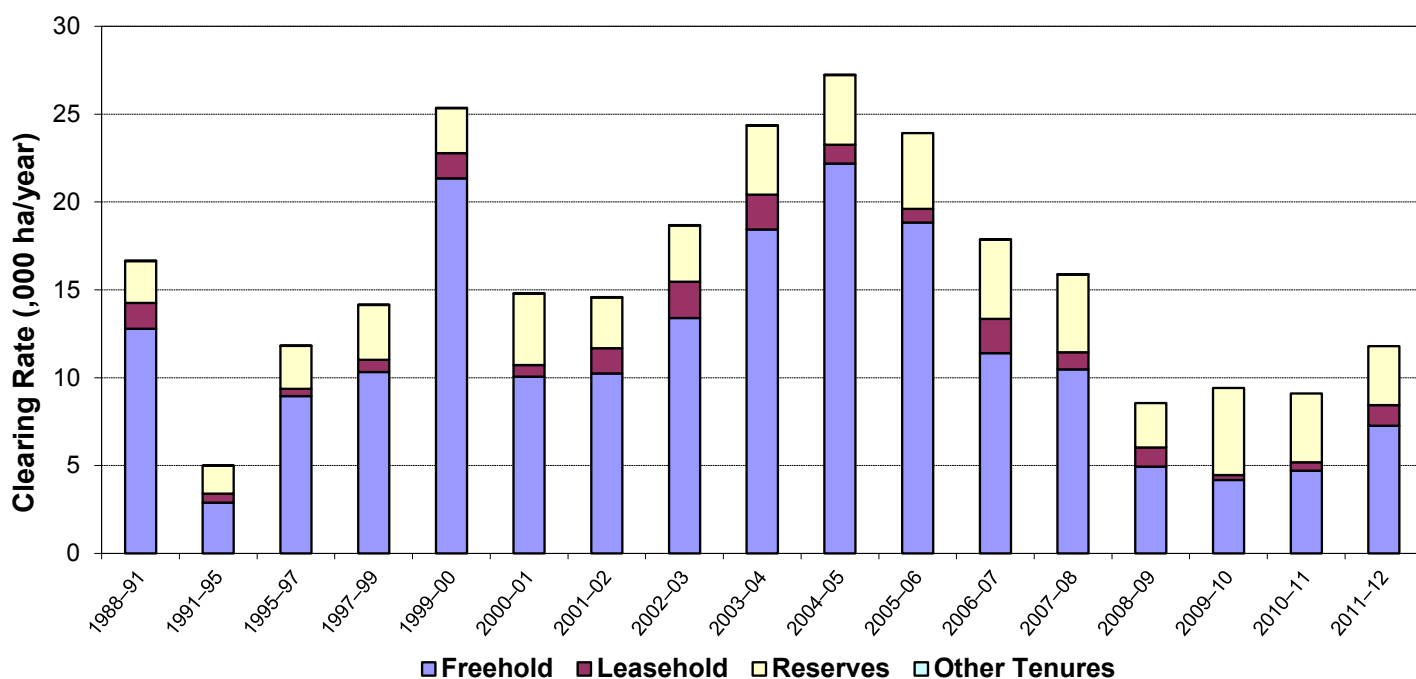


Figure 3. Woody vegetation clearing rates in the Burnett Mary region by tenure.

Woody vegetation clearing by subcatchment

Table 3. Woody vegetation clearing rates in the Burnett Mary region by subcatchment #.

Woody vegetation clearing rate (,000 ha/yr) for	Period				
	2007–08	2008–09	2009–10	2010–11	2011–12
Baffle Creek	1.337	0.754	0.413	0.502	0.763
Barker & Barambah Creek	0.437	0.533	0.639	0.586	0.711
Boyne & Auburn Rivers	3.827	2.365	1.448	1.438	3.642
Boyne River	0.015	0.005	0.002	0.011	—
Brisbane River	—	—	—	—	0.001
Burrum River	0.230	0.080	0.093	0.260	0.160
Dawson River	—	—	—	—	0.001
Elliott River	0.315	0.549	0.087	0.056	0.570
Fraser Island	0.055	0.003	0.000	0.001	0.001
Gregory River	0.362	0.128	0.225	0.211	0.237
Isis River	0.152	0.075	0.097	0.039	0.041
Kolan River	0.683	0.277	0.435	0.363	0.347
Lower Burnett River	0.960	0.593	0.431	0.640	0.722
Lower Mary River	3.658	1.781	2.794	2.510	1.937
Noosa River	1.565	0.426	2.106	1.406	0.961
Upper Burnett River	1.913	0.730	0.198	0.737	1.465
Upper Mary River	0.370	0.259	0.447	0.338	0.234
Total	15.880	8.556	9.415	9.097	11.794

Please refer to Figure 25 and Table 19 of the main report (DSITIA, 2014) for the location of each subcatchment.

Remaining woody vegetation

Table 4. Remaining woody vegetation in the Burnett Mary region by subcatchment.

	Catchment area (,000 ha)	Area woody 2011 V2.3 (,000 ha)	% of catchment woody in 2011
Baffle Creek	408	335	82
Barker and Barambah Creek	592	349	59
Boyne and Auburn Rivers	1300	835	64
Boyne River	—	—	—
Brisbane River	1	1	81
Burrum River	121	106	88
Dawson River	1	1	64
Elliott River	72	42	58
Fraser Island	165	157	95
Gregory River	91	67	74
Isis River	53	46	88
Kolan River	290	220	76
Lower Burnett River	567	339	60
Lower Mary River	676	489	72
Noosa River	98	90	91
Upper Burnett River	859	576	67
Upper Mary River	270	207	77
Total	5573	3868	69

Woody vegetation clearing by replacement land cover

Table 5. Woody vegetation clearing rates in the Burnett Mary region by replacement land cover.

Period	Woody vegetation clearing rate (,000 ha/yr) for						
	Pasture	Crop	Forestry	Mining	Infrastructure	Settlement	Total*
1988–91	11.638	1.968	2.020	0.033	0.622	0.411	16.692
1991–95	2.647	0.402	1.597	0.054	0.124	0.161	4.986
1995–97	6.214	2.486	2.488	0.114	0.155	0.371	11.828
1997–99	8.278	1.719	3.111	0.030	0.876	0.132	14.145
1999–00	21.117	0.919	2.428	0.066	0.571	0.259	25.359
2000–01	9.622	0.364	4.007	0.144	0.322	0.322	14.781
2001–02	11.161	0.100	2.888	0.115	0.167	0.137	14.568
2002–03	14.884	0.162	3.199	0.051	0.128	0.252	18.675
2003–04	22.562	0.023	1.449	0.161	0.113	0.059	24.367
2004–05	21.866	0.063	4.676	0.186	0.230	0.211	27.231
2005–06	18.324	0.047	5.266	0.127	0.062	0.096	23.923
2006–07	13.317	0.068	4.105	0.067	0.099	0.201	17.857
2007–08	10.388	0.094	4.512	0.063	0.288	0.536	15.880
2008–09	5.924	0.010	2.501	0.014	0.016	0.092	8.556
2009–10	4.120	0.026	4.982	0.047	0.116	0.123	9.415
2010–11	4.762	0.121	4.018	0.031	0.039	0.126	9.097
2011–12	7.712	0.076	3.637	0.090	0.203	0.076	11.794

* Total excludes natural tree death.

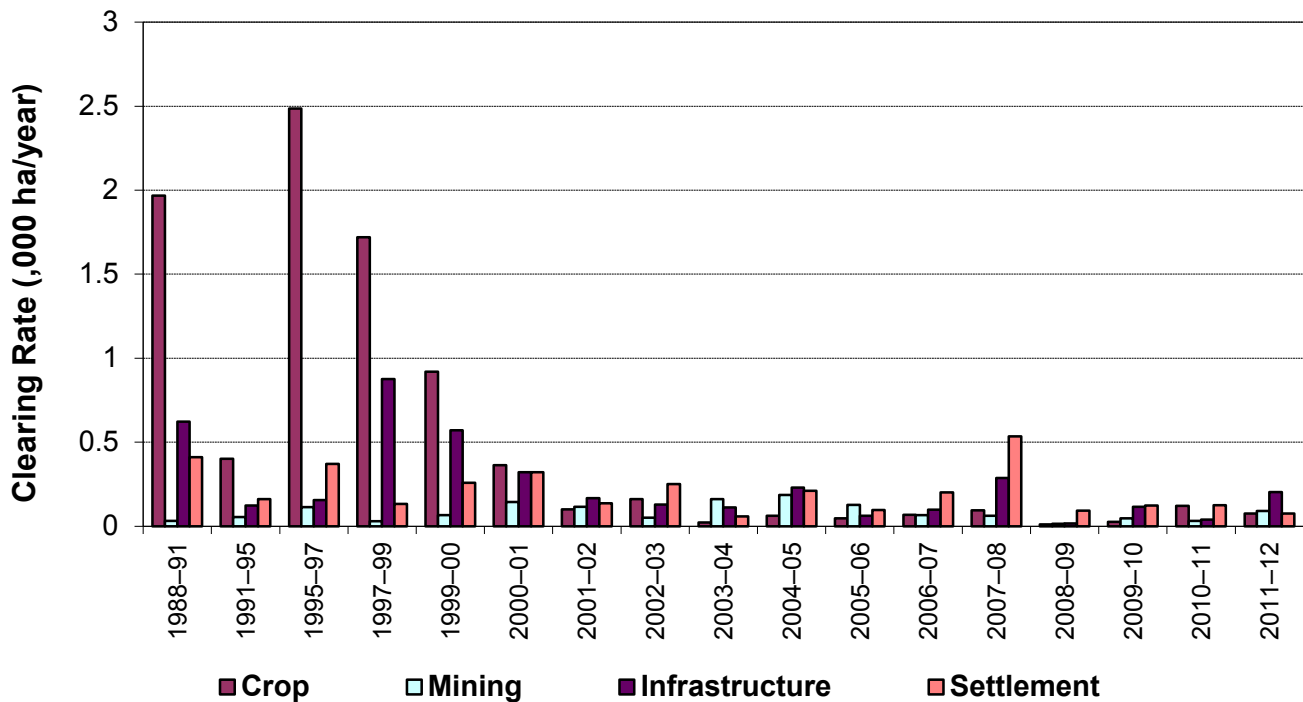
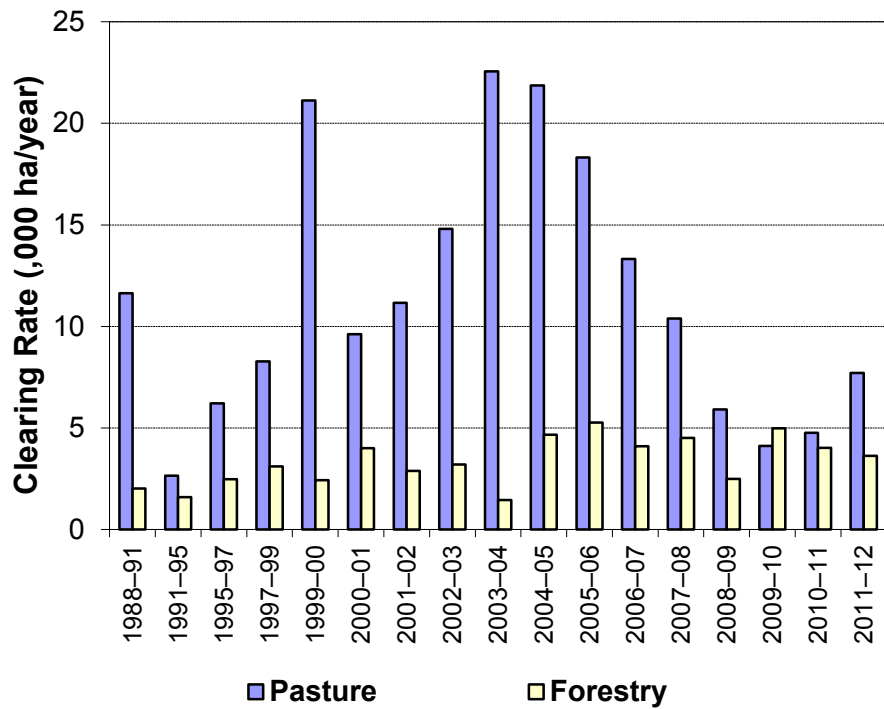


Figure 4. Woody vegetation clearing rates in the Burnett Mary region by replacement land cover.

This fact sheet is 1 of 13 in a series detailing land cover change in Queensland's Natural Resource Management Regions. These fact sheets are addenda to the report: Department of Science, Information Technology, Innovation and the Arts (2014). *Land cover change in Queensland 2011-12: a Statewide Landcover and Trees Study (SLATS) Report, 2014*. Department of Science, Information Technology, Innovation and the Arts, Brisbane.

Please refer to this report for further background, methods and explanatory notes.

The Queensland Government supports and encourages the dissemination and exchange of information. However, copyright protects this document. The State of Queensland has no objection to this material being reproduced, made available online or electronically, provided it is for your personal, non-commercial use, or use within your organisation; the material remains unaltered; and the State of Queensland is recognised as the owner.

© The State of Queensland 2014.

For further information:
 Statewide Landcover and Trees Study
 41 Boggo Road
 Dutton Park QLD 4102
 Phone: 61 7 3170 5686
 Email: dave.harris@dsitia.qld.gov.au