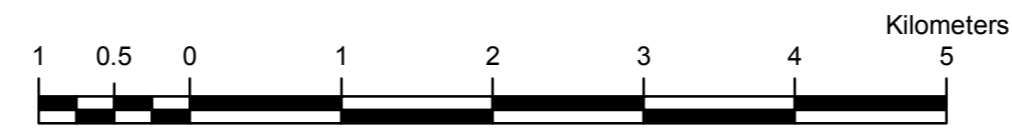


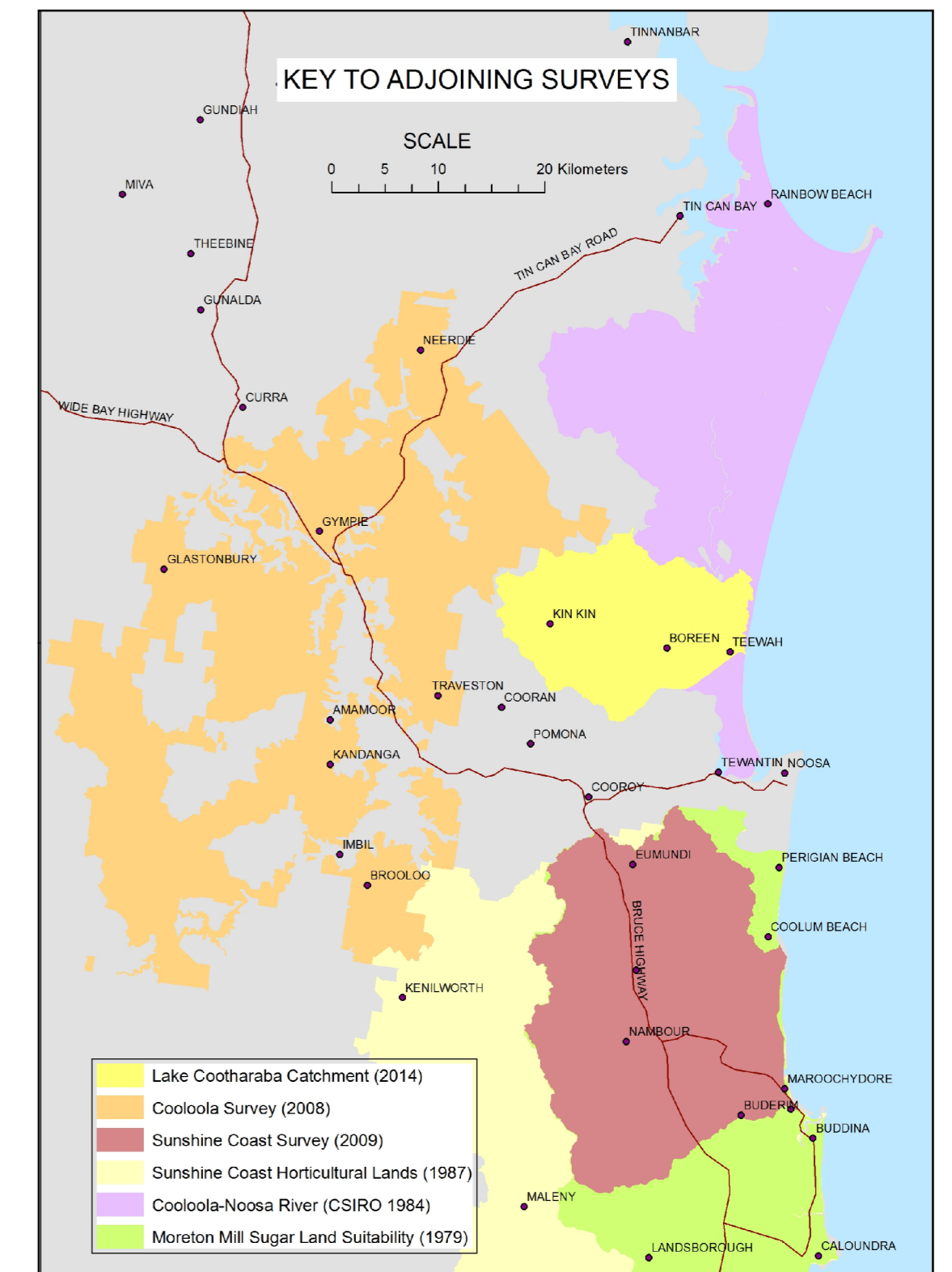
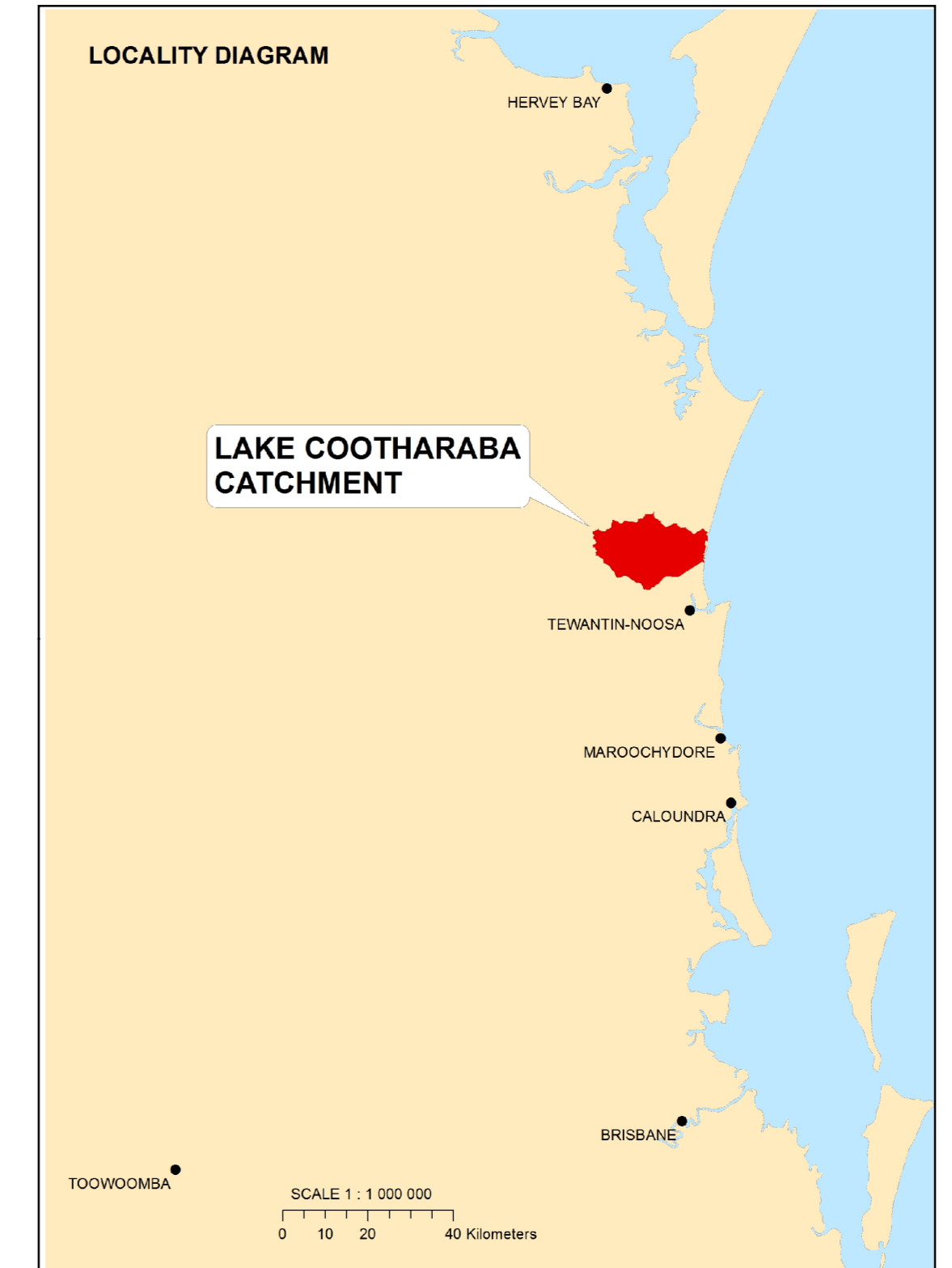
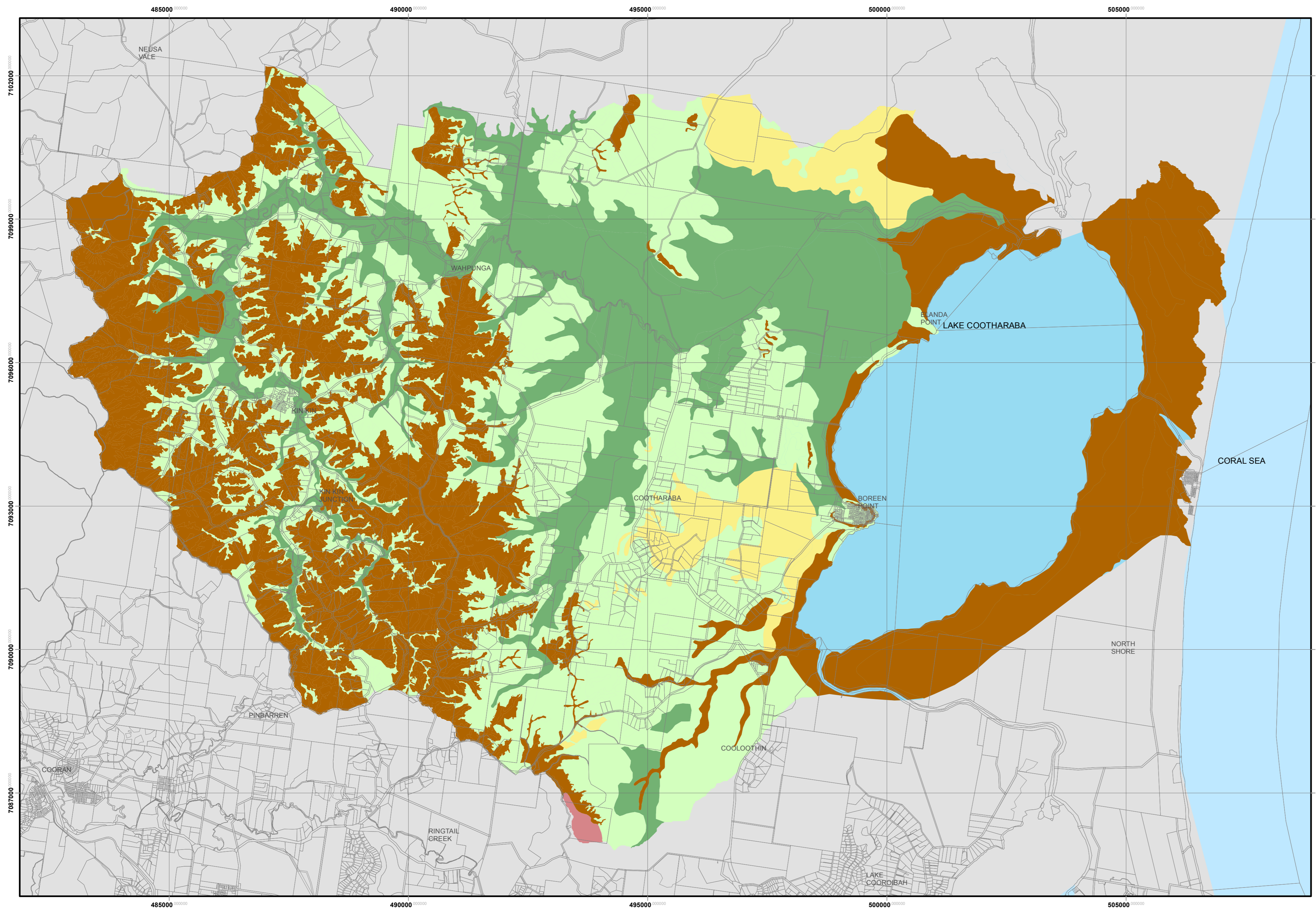
LAKE COOTHARABA CATCHMENT

Agricultural Land Classes



SCALE 1:50 000 (at A1)

UNIVERSAL TRANSVERSE MERCATOR PROJECTION (Zone 56)



Agricultural Land Class (ALC) Code	Description ¹
A1	Suitable for a wide range of current and potential broadacre and horticultural crops with nil to moderate limitations to production.
A2	Suitable for a wide range of current and potential horticultural crops only, with nil to moderate limitations to production.
B	Land that is suitable for a narrow range of crops. The land is suitable for sown pastures and may be suitable for a wider range of crops with changes to knowledge, economics or technology.
C1	Suitable for grazing sown pastures requiring ground disturbance for establishment; or native pastures on higher fertility soils
D	Non-agricultural land. Land not suitable for agricultural use, including land alienated from agricultural use.

¹ Taken from Table 10 in *DSITI & DNRM (2015). Guidelines for agricultural land evaluation in Queensland (2nd edn)*. Queensland Government (Department of Science, Information Technology and Innovation and Department of Natural Resources and Mines), Brisbane, Queensland.

INTENSITY STATEMENT
 This is a medium intensity soil survey. It is based on an observational density of the order of one observation to an area of 90 hectares (Scale 1:50 000).
 Survey and cartography completed by Department of Natural Resources and Mines (DNRM) staff based in Nambour and Bundaberg.
 Base map is Digital Cadastral Data Base, DNRM 2014.
 © The State of Queensland (Department of Natural Resources and Mines) 2012

<http://creativecommons.org/licenses/by/3.0/au/>



LAKE COOTHARABA
 AGRICULTURAL LAND CLASS
 DNRM Ref No. NOOP-1ALC-A1

Coordinate System: GDA 1994 MGA Zone 56
 Projection: Transverse Mercator
 Datum: GDA 1994
 False Easting: 500,000.0000
 False Northing: 10,000,000.0000
 Central Meridian: 153.0000
 Scale Factor: 0.9996
 Latitude Of Origin: 0.0000
 Units: Meter

DISCLAIMER: Whilst every care is taken to ensure the accuracy of this product, the Department of Natural Resources and Mines makes no representations or warranties about its accuracy, reliability, completeness, or suitability, for any particular purpose and disclaims all responsibility and all liability (including without limitation, liability in negligence) for all expenses, losses, damages (including indirect or consequential damage) and costs which the user may incur as a result of the product being in accurate or incomplete in any way for any reason.