

# NOTICE TO MARINERS 308 of 2025

---

Issued by Townsville Maritime Region on 9 July 2025

**Area:** North Queensland

**Locality:** Molongle Creek, Cape Upstart

**Activity:** Molongle Creek Channel, shoaling reported, dynamic seabed

Mariners are advised that:

Shoaling associated with channel bank collapse has been reported in the Molongle Creek Channel (refer attached map S11-607).

Mariners are reminded the sandbanks in the vicinity of Molongle Creek boat ramp, within the Molongle Creek and its approaches in Upstart Bay are dynamic and constantly shifting.

Mariners are advised to navigate with extreme caution and at a safe speed when transiting between Molongle Creek boat ramp and Upstart Bay.

**Refer to notice:** none

**Cancel notice:** none

**AUS charts affected:** AUS826

**ENC Cells affected:** AU320147

---

Latitude and longitude positions are on WGS84 horizontal datum and are compatible with GDA2020 datum.

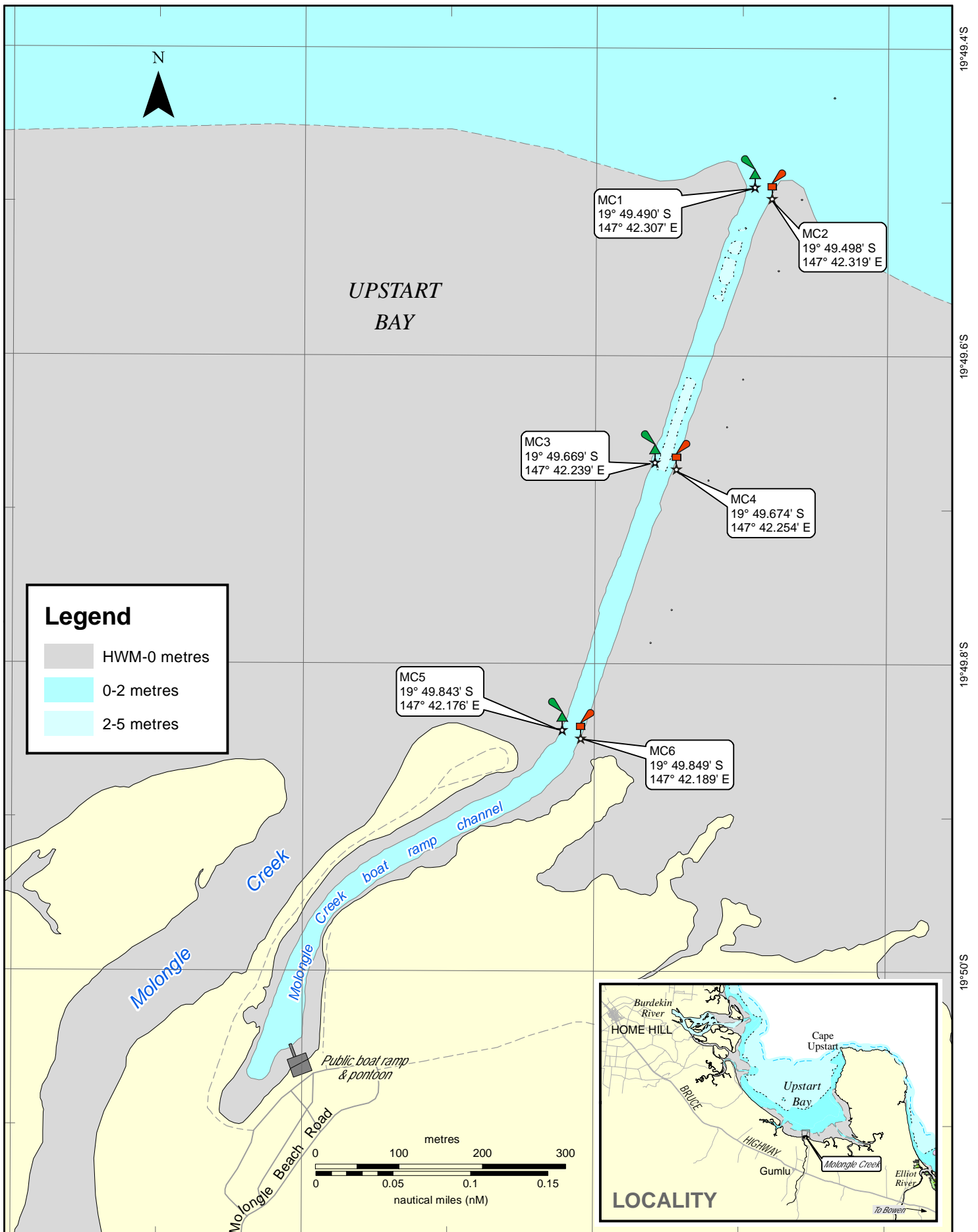
**For further information about this notice, please contact:**

The Townsville Regional Harbour Master's office;

Phone 07 4421 8100

Email: [vtstownsville@msq.qld.gov.au](mailto:vtstownsville@msq.qld.gov.au)

**Notice authorised by:** Regional Harbour Master (Townsville) - Maritime Safety Queensland



© The State of Queensland 2022  
(Transport and Main Roads)



Prepared 15 November 2022  
Maritime Safety Queensland  
Spatial Services

## QUEENSLAND NOTICE TO MARINERS

Issued by Maritime Safety Queensland

### MOLONGLE CREEK CHANNEL NEAR HOME HILL

QNTM updates also available  
from [www.msq.qld.gov.au](http://www.msq.qld.gov.au)  
Datum: GDA94 horizontal. LAT vertical  
Map projection: UTM (MGA zone 55)  
Map S11-607



**Queensland  
Government**