



8

{ Acts and subordinate legislation



<i>Dental Technicians Registration Act 2001</i>	<i>Occupational Therapists Registration Act 2001</i>
Dental Technicians Registration Regulation 2002	Occupational Therapists Regulation 2001
<i>Food Act 2006</i>	<i>Pest Management Act 2001</i>
Food Regulation 2006	Pest Management Regulation 2003
<i>Health Act 1937</i>	<i>Pharmacy Business Ownership Act 2001</i>
Health (Drugs and Poisons) Regulation 1996	Pharmacists Registration Regulation 2001
Health Regulation 1996	<i>Private Health Facilities Act 1999</i>
<i>Health Practitioner Registration Boards (Administration) Act 1999</i>	Private Health Facilities Regulation 2000
<i>Health Practitioner Regulation National Law Act 2009</i>	Private Health Facilities (Standards) Notice 2000
<i>Health Practitioners (Professional Standards) Act 1999</i>	<i>Public Health Act 2005</i>
Health Practitioners (Professional Standards) Regulation 2000	Public Health Regulation 2005
<i>Health Practitioners (Special Events Exemption) Act 1998</i>	<i>Public Health (Infection Control for Personal Appearance Services) Act 2003</i>
Health Practitioners (Special Events Exemption) Regulation 1998	Public Health (Infection Control for Personal Appearance Services) Regulation 2003
<i>Health Quality and Complaints Commission Act 2006</i>	<i>Queensland Institute of Medical Research Act 1945</i>
<i>Health Services Act 1991</i> (jointly administered with the Minister for Disability Services, Mental Health and Aboriginal and Torres Strait Islander Partnerships)	<i>Radiation Safety Act 1999</i>
Health Services Regulation 2002	Radiation Safety Regulation 1999
<i>Hospitals Foundations Act 1982</i>	Radiation Safety (Radiation Safety Standards) Notice 1999
Hospitals Foundations Regulation 2005	<i>Research Involving Human Embryos and Prohibition of Human Cloning for Reproduction Act 2003</i>
<i>Mater Public Health Services Act 2008</i>	Research Involving Human Embryos and Prohibition of Human Cloning for Reproduction Regulation 2003
<i>Medical Radiation Technologists Registration Act 2001</i>	<i>Speech Pathologists Registration Act 2001</i>
Medical Radiation Technologists Registration Regulation 2002	Speech Pathologists Registration Regulation 2001
<i>Mental Health Act 2000</i> (jointly administered with the Minister for Disability Services, Mental Health and Aboriginal and Torres Strait Islander Partnerships)	<i>Tobacco and Other Smoking Products Act 1998</i>
Mental Health Regulation 2002	Tobacco and Other Smoking Products Regulation 1998
Mental Health Review Tribunal Rule 2009	<i>Transplantation and Anatomy Act 1979</i>
	Transplantation and Anatomy Regulation 2004
	<i>Water Fluoridation Act 2008</i>
	Water Fluoridation Regulation 2008



9

{ Appendices



## Appendix 9.1: Glossary of terms

Table 21

<b>Accessible</b>	Accessible healthcare is characterised by the ability of people to obtain appropriate healthcare at the right place and right time, irrespective of income, cultural background or geography.
<b>Activity-based funding</b>	A management tool with the potential to enhance public accountability and drive technical efficiency in the delivery of health services by: <ul style="list-style-type: none"> <li>• capturing consistent and detailed information on hospital sector activity and accurately measuring the costs of delivery</li> <li>• creating an explicit relationship between funds allocated and services provided</li> <li>• strengthening management's focus on outputs, outcomes and quality</li> <li>• encouraging clinicians and managers to identify variations in costs and practices so they can be managed at a local level in the context of improving efficiency and effectiveness</li> <li>• providing mechanisms to reward good practice and support quality initiatives.</li> </ul>
<b>Acute</b>	Having a short and relatively severe course.
<b>Acute care</b>	Care in which the clinical intent or treatment goal is to: <ul style="list-style-type: none"> <li>• manage labour (obstetric)</li> <li>• cure illness or provide definitive treatment of injury</li> <li>• perform surgery</li> <li>• relieve symptoms of illness or injury (excluding palliative care)</li> <li>• reduce severity of an illness or injury</li> <li>• protect against exacerbation and/or complication of an illness and/or injury that could threaten life or normal function</li> <li>• perform diagnostic or therapeutic procedures.</li> </ul>
<b>Acute hospital</b>	Is generally a recognised hospital that provides acute care and excludes dental and psychiatric hospitals.
<b>Admission</b>	The process whereby a hospital accepts responsibility for a patient's care and/or treatment. It follows a clinical decision, based on specified criteria, that a patient requires same-day or overnight care or treatment, which can occur in hospital and/or in the patient's home (for hospital-in-the-home patients).
<b>Admitted patient</b>	A patient who undergoes a hospital's formal admission process as an overnight stay patient or a same-day patient.
<b>Allied health staff</b>	Professional staff who meet mandatory qualifications and regulatory requirements in the following areas: audiology; clinical measurement sciences; dietetics and nutrition; exercise physiology; leisure therapy; medical imaging; music therapy; nuclear medicine technology; occupational therapy; orthoptics; pharmacy; physiotherapy; podiatry; prosthetics and orthotics; psychology; radiation therapy; sonography; speech pathology and social work.
<b>Ambulatory setting</b>	A non-inpatient setting.
<b>Available bed</b>	A bed that is immediately available for use by an admitted patient if required. A bed is immediately available for use if located in a suitable place for care, with nursing and auxiliary staff available within a reasonable period, to service patients who might occupy it.
<b>Benchmarking</b>	Involves collecting performance information to undertake comparisons of performance with similar organisations.
<b>Best practice</b>	Cooperative way in which organisations and their employees undertake business activities in all key processes, and use benchmarking that can be expected to lead to sustainable world class positive outcomes.
<b>Candidate</b>	A person who is a potential or future employee.
<b>Capital expenditure</b>	Expenditure on large-scale non-current assets (for example, new buildings and equipment with a useful life extending over several years).
<b>Care type</b>	Overall nature of a clinical service given to an admitted patient during an episode of care (admitted care), or the type of service provided by the hospital for boarders or posthumous organ procurement (other care).
<b>Casemix</b>	Range and type of patients (the mix of cases) treated by a hospital or other health service. Casemix classifications are a way of describing and comparing hospitals and other services.
<b>Clinical governance</b>	A framework by which health organisations are accountable for continuously improving the quality of their services and safeguarding high standards of care by creating an environment in which excellence in clinical care will flourish.
<b>Clinical practice</b>	Professional activity undertaken by health professionals to investigate patient symptoms and prevent and/or manage illness, together with associated professional activities for patient care.
<b>Clinical workforce</b>	Staff who are or who support health professionals working in clinical practice, have healthcare specific knowledge/ experience, and provide clinical services to health consumers, either directly and/or indirectly, through services that have a direct impact on clinical outcomes.
<b>Continuing care</b>	Uninterrupted, seamless and integrated care.

<b>Critical care</b>	Critical care services include intensive care units, high-dependency units and coronary care units. Critical care services provide care for the critically ill or those vulnerable to critical illness, focusing on the level of care individual patients need, that may or may not be provided in the unit.
<b>Decision support system (DSS)</b>	Consolidates data suitable for finance, human resources, pharmacy and pathology related information for decision-support purposes.
<b>Elective care</b>	Care that, in the treating clinician's opinion, is necessary, and for which admission can be delayed for at least 24 hours.
<b>Electronic Liaison Medication System (eLMS)</b>	Helps healthcare staff manage and use medication-related information for patients and facilitate exchange of medication information with community health practitioners (GPs and community pharmacists).
<b>Emergencies</b>	Immediately, imminently or potentially life-threatening conditions.
<b>Emergency department waiting time to service delivery</b>	Time elapsed for each patient from presentation to the emergency department to start of services by the treating clinician. It is calculated by deducting the date and time the patient presents from the date and time of the service event.
<b>Emergency surgery</b>	Surgery that, in the treating clinician's opinion, is necessary and for which admission cannot be delayed more than 24 hours.
<b>Episode of care</b>	Period of admitted patient care between a formal or statistical admission and a formal or statistical separation, characterised by only one care type.
<b>Full-time equivalent staff</b>	Refers to occupied full-time equivalent staff (full-time equivalent staff currently working in a position).
<b>Governing Council</b>	The governing body of an LHHN, made up of a mix of members with expert skills and knowledge relevant to managing a complex health care organisation.
<b>Health behaviours</b>	Accumulation of attitudes, beliefs, knowledge and practices that result in a person's health behaviours, for example, patterns of eating, physical activity, excess alcohol consumption and smoking.
<b>Health outcome</b>	Change in the health of an individual, group of people or population attributable to an intervention or series of interventions.
<b>Health Reform</b>	Response to the National Health and Hospitals Reform Commission Report (2009) that outlined recommendations for transforming the Australian health system, the National Health and Hospitals Network Agreement (NHHNA) signed by the Commonwealth and states and territories, other than Western Australia, in April 2010 and the National Health Reform Heads of Agreement (HoA) February 2010 signed by the Commonwealth and all states and territories amending the NHHNA.
<b>Hospital</b>	Healthcare facility established under Commonwealth, state or territory legislation as a hospital or a free-standing day-procedure unit and authorised to provide treatment and/or care to patients.
<b>Hospital-in-the-home care</b>	Provision of care to hospital-admitted patients in their place of residence, as a substitute for hospital accommodation.
<b>Immunisation</b>	Process of inducing immunity to an infectious agency by administering a vaccine.
<b>Incidence</b>	Number of new cases of a condition occurring within a given population, over a certain period of time.
<b>Indigenous health worker</b>	An Aboriginal and/or Torres Strait Islander person who holds the specified qualification and works within a primary health care framework to improve health outcomes for Indigenous Australians.
<b>Length of stay</b>	Length of stay of an overnight patient is calculated by subtracting the date the patient is admitted from the date of separation and deducting days the patient was on leave. A same-day patient is allocated a length of stay of one day.
<b>LHHN: Local Health and Hospital Network</b>	LHHN is a separate legal entity established by Queensland to deliver public hospital services. The first LHHNs will roll out on 1 July 2012. Queensland's 17 LHHNs will replace existing HSDs, except Darling Downs-West Moreton, which will be split in two.
<b>Long wait</b>	A 'long wait' elective surgery patient is one who has waited longer than the clinically recommended time for their surgery, according to the clinical urgency category assigned. That is, more than 30 days for a category 1 patient, more than 90 days for a category 2 patient and more than 365 days for a category 3 patient.
<b>Medicare Locals</b>	Will be established by the Commonwealth to coordinate primary health care services across all providers in a geographic area. Will work closely with LHHNs to identify and address local health needs. Will be selected and funded by the Commonwealth. Will be rolled out progressively from 1 July 2011.







<b>Medical practitioner</b>	A person who is registered with the Medical Board of Australia to practice medicine in Australia, including general and specialist practitioners.
<b>Non-admitted patient</b>	A patient who does not undergo a hospital's formal admission process.
<b>Non-admitted patient occasion of services</b>	An occasion of examination, consultation, treatment or other service provided to a non-admitted patient in a functional unit of a health service facility.
<b>Nurse practitioner</b>	A registered nurse educated and authorised to function autonomously and collaboratively in an advanced and extended clinical role. The nurse practitioner role includes assessing and managing clients using nursing knowledge and skills and may include, but is not limited to, direct referral of clients to other healthcare professionals, prescribing medications, and ordering diagnostic investigations.
<b>Outpatient</b>	Non-admitted health service provided or accessed by an individual at a hospital or health service facility.
<b>Outpatient clinic service</b>	Examination, consultation, treatment or other service provided to non-admitted non-emergency patients in a speciality unit or under an organisational arrangement administered by a hospital.
<b>Overnight-stay patient</b>	A patient who is admitted to, and separated from, the hospital on different dates (not same-day patients).
<b>Patient flow</b>	Optimal patient flow means the patient's journey through the hospital system, be it planned or unplanned, happens in the safest, most streamlined and timely way to deliver good patient care.
<b>Performance indicator</b>	A measure that provides an 'indication' of progress towards achieving the organisation's objectives usually has targets that define the level of performance expected against the performance indicator.
<b>Population health</b>	Promotion of healthy lifestyles, prevention or early detection of illness or disease, prevention of injury and protection of health through organised population-based programs and strategies.
<b>Private hospital</b>	A private hospital or free-standing day hospital, and either a hospital owned by a for-profit company or a non-profit organisation and privately funded through payment for medical services by patients or insurers patients admitted to private hospitals are treated by a doctor of their choice.
<b>Public patient</b>	A public patient is one who elects to be treated as a public patient, so cannot choose the doctor who treats them. Or is receiving treatment in a private hospital under a contract arrangement with a public hospital or health authority.
<b>Public hospital</b>	Public hospitals offer free diagnostic services, treatment, care and accommodation to eligible patients.
<b>Queensland Health Data Dictionary</b>	Publication with a core set of uniform definitions for the full range of health services and range of population parameters.
<b>Registered midwife</b>	An individual registered under national law to practice in the midwifery profession as a midwife, other than as a student.
<b>Registered nurse</b>	An individual registered under national law to practice in the nursing profession as a nurse, other than as a student.
<b>Sustainable</b>	A health system that provides infrastructure, such as workforce, facilities and equipment, and is innovative and responsive to emerging needs, for example, research and monitoring within available resources.
<b>Telehealth</b>	Delivery of health-related services and information via telecommunication technologies, including: <ul style="list-style-type: none"> <li>• live, audio and or/video inter-active links for clinical consultations and educational purposes</li> <li>• store-and-forward Telehealth, including digital images, video, audio and clinical (stored) on a client computer, then transmitted securely (forwarded) to a clinic at another location where they are studied by relevant specialists</li> <li>• teleradiology for remote reporting and clinical advice for diagnostic images</li> <li>• Telehealth services and equipment to monitor people's health in their home.</li> </ul>
<b>Tier 1 projects</b>	Infrastructure projects valued at more than \$1 billion.
<b>Tier 2 projects</b>	Capital infrastructure projects valued from \$100 million to \$999 million.
<b>Tier 3 projects</b>	Capital infrastructure projects between \$20 million and \$99 million.
<b>Triage category</b>	Urgency of a patient's need for medical and nursing care.

## Appendix 9.2: Glossary of acronyms

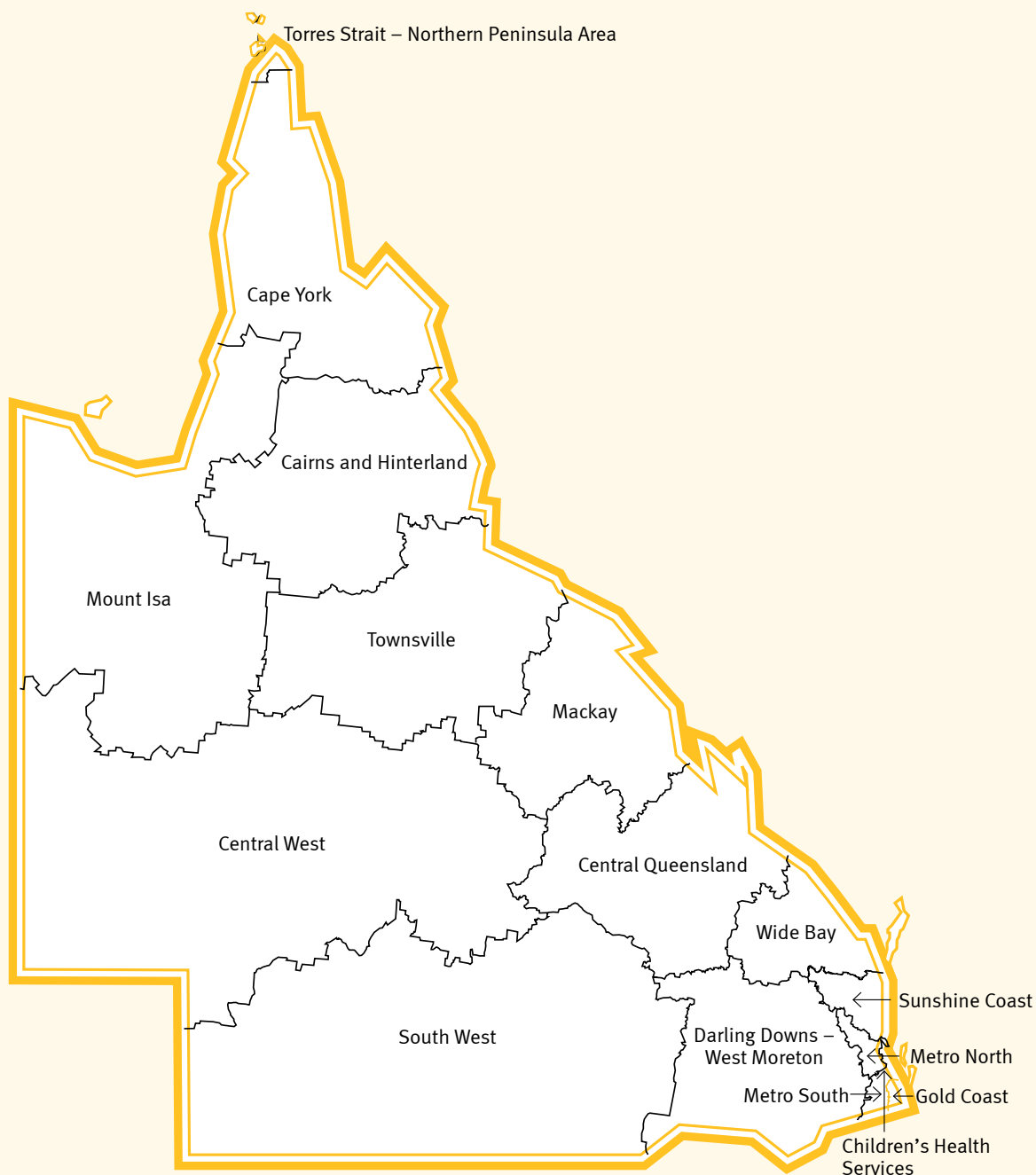
Table 22

<b>ABF</b>	Activity-based funding	<b>HSD</b>	Health Service District
<b>ACAP</b>	Aged Care Assessment Programs	<b>INR</b>	International Normalised Ratio (a measure of blood thinning effect from warfarin)
<b>AHA</b>	Advancing Health Action	<b>IPPEC</b>	Integrated Policy and Planning Executive Committee
<b>BSQ</b>	BreastScreen Queensland	<b>MHTRS</b>	Mental Health Trauma Recovery Services
<b>CALD</b>	Culturally and linguistically diverse	<b>MPHS</b>	Multipurpose Health Service
<b>CaSS</b>	Clinical and Statewide Services	<b>NDRRA</b>	Natural Disaster Relief and Recovery Arrangements
<b>CFA</b>	Community Food Assessment	<b>NHMRC</b>	National Health and Medical Research Council
<b>CHAG</b>	Clean and Healthy Air in Gladstone project	<b>NPA</b>	National Partnership Agreement
<b>CHO</b>	Chief Health Officer	<b>NPAEV</b>	National Partnership Agreement on Essential Vaccines
<b>COAG</b>	Council of Australian Governments	<b>OHMR</b>	Office of Health and Medical Research
<b>CSRP</b>	Clinical Services Redesign Program	<b>PACS</b>	Picture Archiving and Communication System
<b>DoHA</b>	Department of Health and Ageing (Federal Government)	<b>PAH</b>	Princess Alexandra Hospital
<b>E2E</b>	Education to Employment	<b>PCCO</b>	Privacy and Confidentiality Contact Officers
<b>ECCQ</b>	Ethnic Communities Council of Queensland	<b>PET</b>	Positron Emission Tomography
<b>ED</b>	Emergency Department	<b>PBS</b>	Pharmaceutical Benefits Scheme
<b>eLMS</b>	The Enterprise Liaison Medication System	<b>PSR</b>	Policy, Strategy and Resourcing Division
<b>E-PACS</b>	Enterprise Picture Archiving and Communication System	<b>QCH</b>	Queensland Children's Hospital
<b>ERRI</b>	External Radiology Reporting Interface	<b>QHFSS</b>	Queensland Health Forensic and Scientific Services
<b>FMA</b>	Financial Management Assurance process	<b>QiiT</b>	Queensland Incidents in Transfusion
<b>FPL</b>	Finance Procurement and Legal Services Division	<b>QRIS</b>	Queensland Health's Enterprise Radiology Information System
<b>FSS</b>	Forensic and Scientific Services	<b>RAPTS</b>	Registration Assessment Placement Training and Support program
<b>HBAS</b>	Hospital Based Ambulance Services	<b>RTCU</b>	Regional Tuberculosis Control Unit
<b>HI Service</b>	Health Identifier Service	<b>SIG</b>	Special Interest Group
<b>HIPEC</b>	Health Infrastructure and Projects Executive Committee	<b>SMISS</b>	Statewide Medical Imaging Support Service
<b>HPID</b>	Health Planning and Infrastructure Division	<b>STI</b>	Sexually transmissible infection
<b>HRS</b>	Human Resource Services Division	<b>WEHO</b>	Workplace Equity and Harassment Officer





## Appendix 9.3: Health Service Districts by Queensland Health facilities



*Prepared by: Statistical Output, Health Statistics Centre, 10 December 2010.  
Health Service Districts and Facilities as at 1 November 2010.*



## Appendix 9.4: Variable Life Adjusted Displays—measuring clinical outcomes

Queensland Health is determined to deliver patient care that is the safest and of the highest quality as possible. To assist in that endeavour, Queensland Health monitors 30 clinical indicators on a monthly basis using a statistical technique called Variable Life Adjusted Display (VLAD). VLADs provide staff with an easily understood pictorial view of patient outcomes over time to identify extraordinary trends and occurrences at or near the time they occur so they can be investigated promptly and timely action instigated.

The Queensland Health approach to VLADs is world leading and incorporates the following principles:

- line management responsibility for patient safety and quality
- clinician involvement
- a just and open approach to managing adverse events
- responsibilities articulated for all levels of Queensland Health
- measurement of outcomes and performance
- transparency and accountability
- emphasis on the need for Queensland Health to improve its performance in patient safety, quality and effectiveness.

The indicators monitored during 2010–2011 are divided into four categories:

- surgical
- medical
- obstetrics and gynaecology
- mental health.

The following table presents all upper (favourable) and lower (unfavourable) level 3 flags notified to hospitals in April 2010–March 2011 and the corresponding review results associated with the lower level 3 flags. Each review result was reviewed external to the hospital by the Queensland Health Patient Safety and Quality

Executive Committee VLAD Sub-committee to ensure reviews were thorough and action plans addressed findings.

Use of VLADs enables a robust system to monitor the quality of health outcomes and a collaborative approach with districts to address issues where flagged; notify areas of risk; and implement and augment solutions for sustainable improvement.

For more information on the VLAD methodology, please refer to the VLAD website:  
[www.health.qld.gov.au/quality/vlad.asp](http://www.health.qld.gov.au/quality/vlad.asp)



## Appendix 9.4: VLADs

Table 23

### Legend

- ✓ hospital vs peer: satisfactory
- ★ hospital vs state: favourable
- hospital vs state: unfavourable
- ★ ● hospital vs state: once unfavourable and once favourable in the time period.
- indicator not applicable to

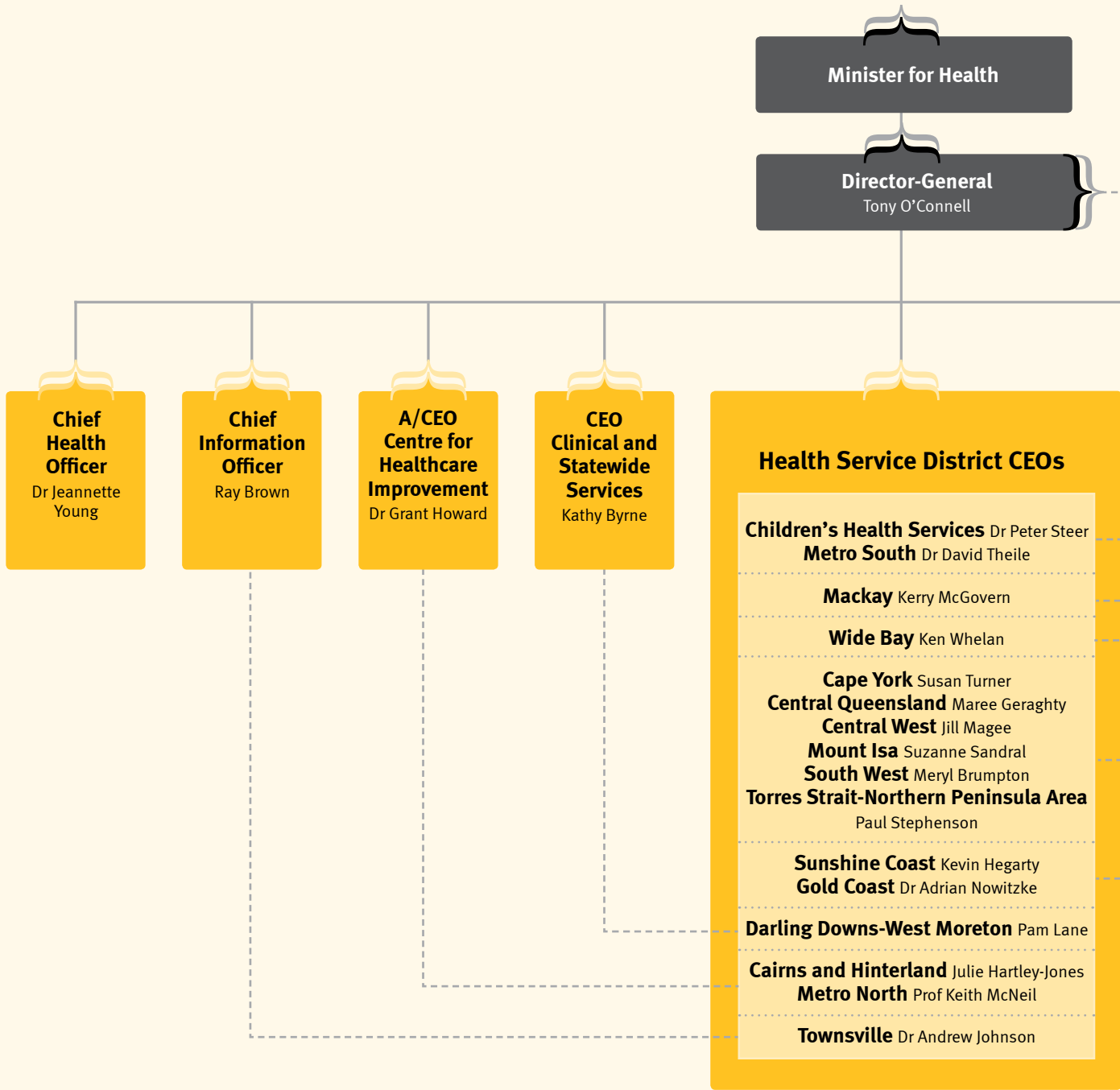
[illegible]

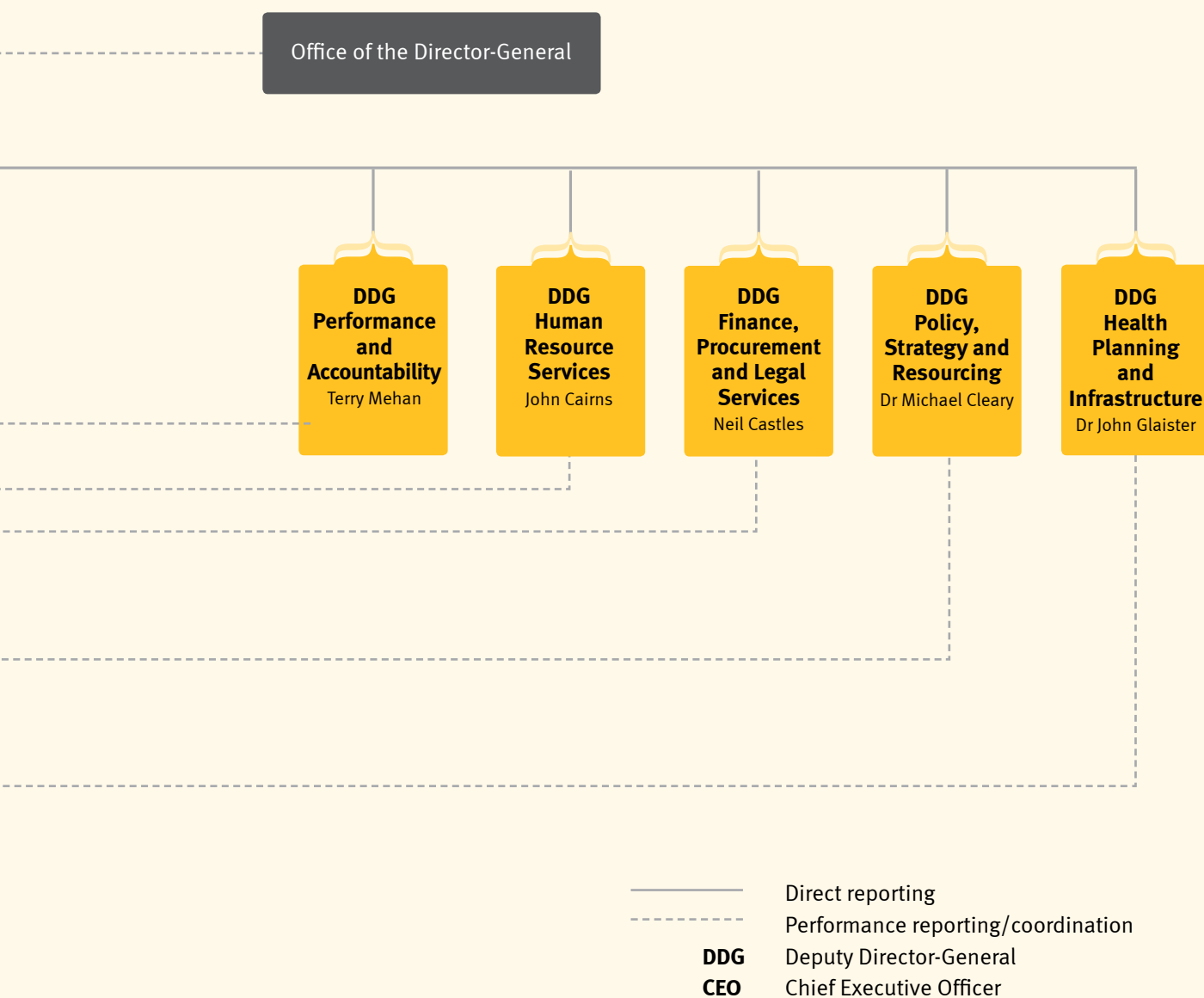
Medical								Gynaecology/Obstetric							Mental Health			
AMI in-hospital mortality	AMI readmission	AMI long-stay	Heart failure in-hospital mortality	Heart failure readmission	Heart failure long-stay	Stroke in-hospital mortality	Pneumonia in-hospital mortality	Abdominal hysterectomy complications of surgery	Vaginal hysterectomy complications of surgery	Selected primip induction of labour	Selected primip caesarean section (public)	Selected primip third and fourth degree perineal tears	Selected primip episiotomy (public)	Selected primip instrumental delivery (public)	Depression readmission	Depression long-stay	Schizophrenia readmission	Schizophrenia long-stay
✓	✓	✓	✓	✓	✓	✓	✓	✓	✓	✓	✓	✓	★	✓	✓	✓	✓	✓
✓	✓	✓	✓	✓	★	●	✓	✓	✓	✓	✓	●	●	✓	✓	✓	✓	✓
✓	✓	✓	✓	✓	✓	✓	✓	✓	✓	✓	✓	★	★	✓	✓	✓	✓	✓
✓	✓	✓	★	★	✓	✓	★		●	★	✓	●	★	✓	✓	✓	✓	✓
✓	★	✓	✓	✓	✓	✓	✓	✓	✓	★	✓	●	●	✓	✓	✓	●	✓
															✓		✓	✓
★	✓	✓	★	✓	✓	★	✓								✓	✓	✓	✓
✓	✓	✓	★●	✓	✓	✓	✓	✓	✓	✓	✓	●	✓	✓	✓	✓	✓	✓
●	✓	✓	✓	✓	●	✓	✓	✓	✓	✓	✓	●	✓	✓	✓	✓	✓	✓
✓	✓	✓	●	✓	●	✓	✓	✓	✓	✓	✓	✓	✓	✓	✓	✓	✓	✓
●	✓	✓	✓	★	✓	✓	✓	✓	✓	✓	✓	✓	✓	✓				
✓	✓	✓	●	✓	✓	✓	★	✓	✓	✓	✓	✓	✓	✓	✓	✓	✓	✓
✓	✓	✓	★	✓	✓	✓	✓	✓	✓	✓	✓	✓	✓	✓	✓	✓	✓	✓
●	✓	✓	✓	✓	✓	✓	✓	✓	✓	✓	✓	✓	✓	✓	✓	★	✓	✓
							✓								✓	✓	✓	✓
✓	✓	✓	✓	✓	✓	✓	✓											
✓			✓	✓	✓		✓			✓	●	✓	✓	✓				
✓	✓	✓	✓	✓	✓	✓	✓	✓	✓									
✓	✓	✓	✓	✓	✓	✓	✓	✓	✓									
✓	✓	✓	✓	✓	✓	✓	✓	✓	✓	✓	✓	✓	✓	✓				
✓	✓	✓	★	✓	✓	✓	★	✓	✓	✓	✓	●	●	✓	✓	✓	✓	✓
✓	✓	✓	✓	✓	✓	✓	✓	✓	✓	✓	✓	★	●	✓	✓	✓	✓	✓
✓	✓	✓	✓	★	✓	✓	✓	✓		✓	✓	✓	✓	✓	✓	✓	✓	✓
			✓	✓	✓	✓	✓			✓	✓	✓	✓	✓				
			✓	✓	✓		✓			✓	✓	✓		✓				
							✓				✓	✓	✓	✓				
			✓	✓	✓		✓											
			✓	✓	✓		✓											
			✓	✓	✓		✓											
							✓											
			✓	✓	✓		✓											
			✓	✓	✓		✓											
			✓	✓	✓	✓	★	✓		✓	✓	✓	✓	✓				
			✓	✓	✓		✓			✓	✓		✓	✓				
			✓	✓	✓	✓	★	✓		★	✓	✓	★	✓				
✓			✓	✓	✓		✓			✓	✓	✓	✓	✓				
				✓	✓		✓			✓	✓	✓	✓	✓				
			●	✓	✓		✓			✓	✓	●	✓	✓				
			✓	✓	✓		✓			✓	✓	✓	✓	✓				
							✓											
			✓				✓											
			✓				✓											
			✓	✓	✓		✓			✓	✓	✓	✓	✓				
			✓	✓	✓		★			✓	✓	✓	✓	✓				
			✓	✓	✓		✓			✓	✓	✓	✓	✓				
			✓	✓	✓		✓			✓	✓	✓	✓	✓				
✓			●	✓	✓	✓	✓			✓	✓	●	✓	✓				
			✓	✓	✓		✓						✓	✓				



# Appendix 9.5: Queensland Health Organisation Chart

June 2011









## Appendix 9.6: Overseas travel

Table 24

Name and position	Destination and date	Reason for travel	Agency cost	Contribution from external sources
Leanne Aitken Chair of Critical Care Nursing	United States of America January 2011	Attend 40th Critical Care Congress with Society of Critical Care Medicine incorporating the Surviving Sepsis Campaign Guideline meeting	\$3,551	Nil
Kellie Allen Principal Project Officer	United States of America December 2010	Attend 22nd Annual Patient Safety Conference	\$3,142	Nil
Heidi Atkins Principal Project Officer - Patient Safety and Quality Information Service	New Zealand November 2010	Attend 4th Australian and New Zealand Falls Prevention Society Conference	\$1,847	Nil
Fusun Baumann Research Officer	Japan October–November 2010	Attend Single Fibre Electromyography Course and Quantitative Electromyography Conference	\$3,463	Nil
Jennifer Baxter Director Radiation Therapy Services	United States of America October–November 2009	Attend Elekta User Meeting, 51st Annual Meeting of the American Society for Radiation Oncology	\$153	Nil
Carey Bayliss Physiotherapist	India October–November 2010	Attend 49th International Spinal Cord Society annual scientific meeting and post conference workshops	\$5,184	Nil
Debra Berg Manager Queensland Amputee Limb Service	United Kingdom May 2010	Attend 13th World Congress of the International Society for Prosthetics and Orthotics and International Trade Show for Prosthetics, Orthotics and Rehabilitation Technology; visit new Scientific Centre for Medical Technologies in Berlin, Otto Bock Healthcare Facility and International Prosthetics Manufacturing Plant; attend meetings with managers and prosthetists at three prosthetic and rehabilitation facilities in London–Royal National Orthopaedic Hospital, Queen Mary's Hospital, Crystal Palace Rehabilitation Centre	\$2,128	Nil
Rachael Beswick Senior Project Officer, Healthy Hearing Program	Italy June 2010	Attend Newborn Hearing Screening Conference on risk factors in children's postnatal hearing loss	\$2,900	Nil
Stefan Blum Senior Registrar	Spain October–November 2010	Attend International Congress of Neuroimmunology	\$4,011	Nil
Dianne Brookes Public Health Nurse	East Timor June 2010	Conduct screening of local population of Timor–Leste for leprosy; participation in this international aid program ensured Queensland was represented in the global effort to eliminate leprosy.	\$1,718	Nil
Paula Brown Principal Project Officer –Healthcare Culture & Leadership Service	New Zealand February–March 2011	Attend five-day Return on Investment Certificate workshop	\$1,335	Nil
Andrew Bryett Acting Director, Telehealth Services	United Kingdom, Canada February–March 2011	Attend International Congress on Telehealth and Telecare to evaluate current and emerging international best practice Telehealth programs; visit Telehealth services sites in Scotland and Canada to assess well-established Telehealth services and identify approaches to Telehealth-enabled service provision	\$10,105	Nil

Name and position	Destination and date	Reason for travel	Agency cost	Contribution from external sources
Peter Bullimore Non-agency employee	Australia February–March 2011	Deliver two-day workshop, Working with Paranoia and Hearing Voices; (travelled from England)	\$333	Nil
Alison Caddick Midwife	United Kingdom November 2010	Attend Royal College of Midwives Annual Conference, Manchester	\$2,372	Nil
Katrina Campbell Dietetics and Nutrition Principal Research Officer	United Kingdom, Switzerland May–June 2010	Attend investigators' meeting for Obesity in Kidney Disease Study, London; International Society of Renal Nutrition and Metabolism Conference, Switzerland	\$1,577	Nil
Patrick Carroll Senior Medical Officer – Redcliffe	Japan July 2011	Attend 23rd Conference of the International Society of Thrombosis	\$2,107	Nil
Paul Carroll Senior Director, Radiology Support, Clinical and Statewide Services	United States of America, United Kingdom May–June 2011	Under take 12-day study tour to USA and UK, focusing on Telehealth and diagnostic learning about neutral archive technology	\$16,852	Nil
Veronica Casey Executive Director Nursing Services	Italy April–May 2011	Attend International Council of Nurses Conference and Council of National Representatives on Nurses Driving Access, Quality and Health	\$12,316	Nil
Darren Cassidy Principal Medical Physicist	United States of America June 2010	Attend TomoTherapy physics training course	\$1,267	Nil
Catherine Cheung Registered Nurse	New Zealand October 2010	Present papers to 2010 Annual Scientific Meeting of the Haematology Society of Australia and New Zealand; Australian and New Zealand Society of Blood Transfusion; Australasian Society of Thrombosis and Haemostasis	\$1,554	Nil
Moses Chikazaza Sleep Scientist	New Zealand October 2010	Attend Sleep DownUnder 2010	\$1,795	Nil
Adrian Chong Registrar	United States of America August - September 2010	Attend American College of Cardiology 2010 legislative conference	\$5,776	Nil
Julia Clark Consultant Paediatrician Immunology and Infectious Disease	Australia October 2010	Present medical staff with education sessions and discussions on immunology and infectious diseases services (travelled from United Kingdom)	\$8,237	Nil
Angela Coleman Renal Educator Nephrology	Ireland September 2010	Attend European Dialysis Transplant Nurses Association/European Renal Care Association 30th International Conference, Dublin	\$3,156	Nil
Aniko Cooper Director	Spain September 2010	Attend European Society for Therapeutic Radiology and Oncology Conference	\$2,271	Nil
Marcus Cotton Scientist Forensic Chemistry	New Zealand November 2010	Attend The Clandestine Laboratory Investigating Chemists Association Annual Technical Training Seminar in Auckland; Weapons of Mass Destruction: Recognition and Awareness of Chemical, Biological, Radiological, Nuclear Explosives	\$1,195	Nil
Yolanda Cowan Senior Project Officer	New Zealand February - March 2011	Reimbursement of expenses for employee who was part of the Australian Medical Assistance Team rapid response team following the Christchurch earthquakes	\$530	Nil





Name and position	Destination and date	Reason for travel	Agency cost	Contribution from external sources
Letitia Creevy A/Principal Project Officer (Nursing and Midwifery)	United Kingdom November 2010	Attend the Royal College of Midwives Annual Conference, Manchester	\$4,610	Nil
David Crofts Nurse Escort	New Zealand April 2011	Escort patient to Zepa Tauraki	\$751	Nil
Patrick Culpan Audit Manager	Kuala Lumpur July 2011	Attend Institute of Internal Auditors International Conference	\$254	Nil
Luke Danaher Senior Health Officer	United States of America November–December 2010	Attend Radiological Society North America Scientific Assembly and Annual Meeting	\$5,043	Nil
Fiona Davidson Nurse Researcher	England October–November 2010	Attend European Congress on Mental Health and Deafness	\$2,775	Nil
Mark Denham Magnetic Resonance Imaging Services Manager	New Zealand November 2010	Attend Siemens Magnetic Resonance Imaging User Group Meeting; 5th Annual Meeting of the Section for Magnetic Resonance Technologists ANZ Chapter	\$970	Nil
Annette Dent Director Respiratory Services	Spain September 2010	Attend and present at European Respiratory Society Annual Congress	\$2,029	Nil
Liam Donaldson Chief Medical officer, Dept of Health	Australia March–April 2009	Audit of Clinical Governance in Queensland Health (travelled from United Kingdom)	\$3,836	Nil
Sanja Doneva Senior Cardiac Scientist	New Zealand June 2010	Attend 17th World Congress in Cardiac Electrophysiology and Cardiac Techniques	\$713	Nil
Maria Draper Clinical Nurse Consultant	United States of America January 2011	Attend 5th Annual National Database of Nursing Quality Indicators Conference - Heating up Nursing Quality in Miami	\$4,033	Nil
Paula Duffy Director of Nursing	United Kingdom October 2010	Visit four UK hospitals with functioning medical assessment units to work with clinicians to evaluate their model to inform the model for Robina Hospital expansion and Gold Coast University Hospital	\$4,401	Nil
Sophie Dwyer Executive Director	New Zealand March–April 2011	Attend Food Regulation Standing Committee meeting, Christchurch, to ensure Queensland is involved in critical decision making on implementing and enforcing food standards	\$936	Nil
Helen Eldridge Senior Scientist Forensic Chemistry	New Zealand November 2010	Attend Clandestine Laboratory Investigating Chemists Association Annual Technical Training Seminar, Auckland; Weapons of Mass Destruction: Recognition and Awareness of Chemical, Biological, Radiological, Nuclear Explosives	\$1,131	Nil
Megan Ellis ALLG Tissue Bank Manager	United States of America May 2011	Attend International Society for Biological and Environmental Repositories meeting	\$4,112	Nil
Juliet Esmonde Public Health Nurse	East Timor June 2010	Conduct screening of local population in Timor-Leste for leprosy. Participation in this international aid program ensured Queensland was represented in the global effort to eliminate leprosy	\$1,676	Nil
David Farlow Medical Superintendent	Netherlands June 2010	Attend European Congress for Healthcare Planning and Design Innovation in Health Assets for Sustainable Healthcare, Rotterdam; tour of five hospitals in the Netherlands, Belgium, Spain	\$4,348	Nil

Name and position	Destination and date	Reason for travel	Agency cost	Contribution from external sources
Melissa Faulkner Senior Research Officer	United States of America September 2010	Attend and present at International Congress on Child Abuse and Neglect	\$4,007	Nil
Mandy Forster Director, Access Improvement Service	Austria March 2011	Attend EuroScan Executive Committee meeting as a national secretariat of HealthPACT	\$2,158	Nil
Mandy Forster Director Clinical Policy Unit, Policy Branch	Ireland June 2010	Attend and present at Health Technology Assessment International Conference, Dublin	\$4,375	Nil
Joanne Franklin Registered Nurse	United States of America November–December 2010	Attend Radiological Society of North America 96th Annual Scientific Assembly and annual meeting	\$2,691	Nil
Nicole Gavin Nurse Researcher	New Zealand October 2010	Attend HAA 2010 Annual Scientific Meeting	\$1,547	Nil
Stephanie Gettens Clinical Nurse	New Zealand November 2010	Attend Australian and New Zealand Falls Prevention Society Conference	\$2,150	Nil
Amanda Gilbert Clinical Nurse Consultant	Spain November–December 2010	Attend Advanced International Training Course in Transplant Coordination held by Transplant Procurement Management, Barcelona	\$4,959	Nil
Nevin Glendenning Medical Imaging Technician, Biomedical Technology Services	United States of America April–May 2010	Attend Varian Clinic High Energy Technical Maintenance I and II training courses covering maintenance and practical education for Mater Radiation Oncology Centre Linear Accelerators	\$8,884	Nil
Frederick Graham Clinical Nurse Consultant	United States of America January 2011	Attend 5th Annual National Database of Nursing Quality Indicators Conference–Heating up Nursing Quality in Miami	\$4,005	Nil
Jaimi Greenslade Research Officer	Singapore June 2010	Attend 13th International Conference on Emergency Medicine	\$1,374	Nil
Kerry Grimes Acting Director, Telehealth Expansion Program	United Kingdom, Canada February–March 2011	Attend International Congress on Telehealth and Telecare to evaluate current and emerging international best practice Telehealth programs; visit Telehealth services sites in Scotland and Canada to assess well-established Telehealth services and identify approaches to Telehealth-enabled service provision	\$10,900	Nil
Lynette Hair Anaesthetic Technician	New Zealand November 2010	Attend 2010 New Zealand Anaesthetic Technician Society/Australasian Society of Anaesthesia Paramedical Officers annual general meeting	\$980	Nil
Kathleen Hall Physiotherapist	Spain June 2010	Attend 33rd European Cystic Fibrosis Conference; Adult Cystic Fibrosis Centre Site visit	\$439	Nil
Aaron Hansen Register	Netherlands July 2011	Attend 14th World Conference on Lung Cancer	\$150	Nil
Selina Harris Radiation Therapist	United Kingdom April–May 2010	Attend European Society of Therapeutic Radiation Oncology training course; TomoTherapy European User meeting; site visit Addenbrookes Hospital	\$5,407	Nil
Samual Hawgood Non-agency employee	Australia October 2010	Guest speaker, Royal Brisbane and Women's Hospital Health Care Symposium (travelled from United States of America)	\$6,946	Nil
Tracey Hawkins Clinical Nurse	Singapore June 2010	Attend 13th International Conference on Emergency Medicine	\$943	Nil





Name and position	Destination and date	Reason for travel	Agency cost	Contribution from external sources
Kevin Hegarty Chief Executive Officer	New Zealand July 2010	Attend Inaugural Work Healthcare Networks Conference, Auckland; meet Wellington and Auckland-based organisations	\$1,908	Nil
Belinda Henderson Clinical Nurse Consultant	England October 2010	Attend 7th International Conference of Hospital Infection Society, Liverpool	\$5,833	Nil
Cheryl Hutchins Laboratory Director	United States of America June 2010	Attend 8th International Umbilical Cord Blood Transplantation Symposium	\$1,265	Nil
Fiona Israel Clinical Nurse Consultant	Vietnam July 2010	Contracted to provide education and training to medical & nursing staff for Vietnamese Ministry of Health	\$486	Nil
Shane Jeffrey Dietitian	Austria June 2010	Attend 2010 International Conference on Eating Disorders	\$4,620	Nil
Leanne Jiggins Nursing Unit Manager	United States of America October 2010	Present at Annual American Nurses Credentialing Centre Conference	\$4,423	Nil
Karen Johnson Scientist, Queensland Mycobacterium Reference Laboratory	Papua New Guinea November 2010	Provide laboratory capacity building training, Daru; implement Culture and Drug Susceptibility Testing, Port Moresby; assist with external quality assurance	\$4,763	Nil
Kate Jurd Medical Education Officer	Austria August–September 2011	Present papers at International Association for Medical Education Conference, Vienna	\$1,039	Nil
Nitin Kapur Respiratory Fellow	The Philippines November 2010	Attend 15th Congress of Asia Pacific Society of Respiriology	\$936	Nil
May Keket Non-agency employee	Australia October 2010	Receive specialist training in culture and susceptibility techniques in conjunction with Tuberculosis Laboratory Capacity Building project (travelled from Papua New Guinea)	\$669	Nil
Germaine Kenny Principal Project Officer Work for us	United Kingdom March 2011	Attend Health Jobs Around the World Expos, Manchester and London, to source potential candidates appropriately skilled and trained in emergency medicine and psychiatry	\$6,881	Nil
Richard Kenworthy Senior Medical Officer, Emergency Department	United Kingdom September–October 2010	Attend the British Medical Journal Careers Fair at Business Design Centre, London; West Midlands Careers Fair, The Science Museum, Birmingham	\$10,276	Nil
Akram Khalil Consultant Gynaecologist	United States of America November 2010	Attend 39th AAGL Global Congress of Minimally Invasive Gynaecology	\$4,838	Nil
Aimee King Scientist, Immunology	New Zealand November 2010	Attend 2010 Asia-Pacific Histocompatibility and Immunogenetics Association Conference to discuss common issues with colleague and update on current technology and practices on tissue typing policies	\$2,404	Nil
Patricia Kleidon Clinical Nurse Consultant	The Netherlands June 2010	Attend World Congress on Vascular Access	\$3,841	Nil
Anna Koch Radiation Therapist	United States of America September - October 2010	Attend Stereotactic Body Radiotherapy Symposium	\$5,430	Nil
Anastasios Konstantinos Director, Queensland Tuberculosis Control Centre	Papua New Guinea August 2010	Attend Health Service Providers Group meeting, Daru Island; co-chair meeting focused on treating tuberculosis and cross border cooperation	\$80	Nil



Name and position	Destination and date	Reason for travel	Agency cost	Contribution from external sources
Pim Kuipers Principal Research Fellow	Malaysia November 2010	Attend Asia-Pacific Community-Based Rehabilitation Convention 2010	\$1,783	Nil
Suzanne Kuys Principal Research Fellow	The Netherlands July 2011	Attend 16th International World Physical Therapy Congress	\$4,797	Nil
Rachael Lawson Oncology Pharmacist	United States of America September 2010	Attend investigator meeting, Children's Oncology Group	\$5,741	Nil
Nadine Lawson Speech Pathologist	Vietnam February 2011	Site visit; deliver clinical training and supervision for speech therapy students, Pham Ngoc Thach Medical University, Ho Chi Minh City	\$1,748	Nil
Susanne Le Boutillier Senior Director, National Health Reform Implementation	New Zealand July 2010	Attend Inaugural Work Healthcare Networks Conference, Auckland; meet Wellington and Auckland-based organisations	\$2,180	Nil
Alexander Lehn Physiotherapist	Canada June 2011	Attend 15th International Congress of Parkinson's Disease and Movement Disorders	\$120	Nil
Jennifer Lethlean Speech Pathologist	United Kingdom May 2011	Attend Running a Conversation Partner Scheme course with Connect	\$3,078	Nil
Han Ling Continuous Positive Airway Pressure Program Administrator	New Zealand October 2010	Attend Biodiversity of Sleep Conference	\$1,556	Nil
David MacFarlane Deputy Director, Nuclear Medicine	United States of America November–December 2010	Attend Radiological Society of North America 96th Scientific Assembly; meet Impel Pharma; site visit to Biomarker	\$3,248	Nil
Emily Mahoney/Thomson A/Principal Project Officer	United Kingdom March 2011	Attend Health Jobs Around the World Expos, Manchester and London, to source potential candidates appropriately skilled and trained in emergency medicine and psychiatry	\$5,316	Nil
Kenneth Manthey Manager, Statewide Radiology Information System and Picture Archive Communication System Integration	Canada October 2010	Visit AGFA Healthcare's Impax Radiology/ Teleradiology product development laboratory; attend AGFA Healthcare's Impax Canadian User Symposium	\$350	Nil
Kristen McAnelly Clinical Nurse Consultant	Vietnam September–October 2010	Contracted to provide education and training to medical and nursing staff for Vietnamese Ministry of Health	\$204	Nil
Barry McCarthy Acting Nursing Director, Emergency	New Zealand February–March 2011	Provide disaster relief assistance after Christchurch earthquakes	\$560	Nil
Robert McDonald Senior Director, Assurance and Risk Advisory Services	United States of America November–December 2010	Attend International Institute of Internal Auditors Committee and Board meetings, Orlando, Florida	\$7,245	Nil
Lachlan McDowell Radiation Oncology Registrar	Singapore December 2010	Attend European Society for Therapeutic Radiology and Oncology Conference	\$1,837	Nil
David McFarlane Director	United States of America November–December 2010	Attend Radiological Society North America; visit Impel Pharmaceuticals, Seattle	\$705	Nil





Name and position	Destination and date	Reason for travel	Agency cost	Contribution from external sources
Kerry McGovern Chief Executive Officer	The Netherlands June 2010	Attend European Congress for Healthcare Planning and Design Innovation in Health Assets for Sustainable Healthcare, Rotterdam; tour five hospitals in the Netherlands, Belgium, Spain	\$5,171	Nil
Patrick McGrath Vice President Research	Australia April 2011	Deliver professional development teaching on chronic and acute pain to staff and external conference attendees (travelled from Canada)	\$4,521	Nil
Deborah McIntyre Clinical Nurse Consultant	Austria April 2010	Attend 45th European Association for the Study of the Liver Conference	\$5,599	Nil
Penelope McKenzie Registrar	New Zealand August 2010	Attend Pre-Phase 1 Examination Course, Royal Australian and New Zealand College of Radiologists Annual Scientific Meeting	\$1,409	Nil
Keith McNeil District CEO	New Zealand March 2011	Attend Hardy Group International Executive Learning Set Meetings	\$2,254	Nil
Rebecca Meldrum Clinical Physicist	United States of America June 2010	Attend TomoTherapy physics training course	\$1,075	Nil
Joshua Miller Registered Nurse	New Zealand June 2010	Escort patient home to Auckland	\$897	Nil
Eleanor Milligan Ethicist	United States of America May 2010	Attend 6th International Conference on Clinical Ethics Consultation	\$497	Nil
Jeannene Mould Anaesthetic Technician	New Zealand November 2010	Attend 2010 New Zealand Anaesthetic Technician Society/Australasian Society of Anaesthesia Paramedical Officers annual general meeting	\$1,544	Nil
Emma Munro (nee Hopkins) A/Clinical Nurse Consultant	United States of America February–March 2011	Attend 12th Annual National Pressure Ulcer Advisory Panel Biennial Conference	\$3,742	Nil
Sushil Narayan Principal Quality Officer, Stem Cell Transplant	New Zealand October 2010	Present at 2010 Annual Scientific Meeting of the Haematology Society of Australia and New Zealand; Australian and New Zealand Society of Blood Transfusion; Australian Society of Thrombosis and Haemostasis	\$600	Nil
Wayne Nicholls Senior Staff Specialist	United States of America September 2010	Attend investigator meeting, Children's Oncology Group	\$7,178	Nil
Charlton Noble Nursing Director, Patient Safety & Quality	Turkey June 2011	Attend European Society for Paediatric Gastroenterology, Hepatology and Nutrition	\$3,780	Nil
Adrian Nowitzke Chief Executive Officer	New Zealand January 2011	Attend January board meeting, The Health Round Table, principle method of benchmarking performance across multiple areas of health care operations for districts	\$991	Nil
Edward Nutt Anaesthetic Technician	New Zealand November 2010	Attend Australasian Society of Anaesthesia Paramedical Officers 2010 Conference, Christchurch	\$960	Nil
Tony O'Connell Chief Executive Officer, Centre for Healthcare Improvement	France October 2010	Attend International Society in Quality in Healthcare 27th International Conference	\$3,450	Nil
Tony O'Connell Chief Executive Officer, Centre for Healthcare Improvement	Spain November 2010	Attend Health Tracker conference	\$5,097	Nil

Name and position	Destination and date	Reason for travel	Agency cost	Contribution from external sources
Bernadette O'Grady Clinical Nurse Consultant	United States of America September 2010	Attend investigator meeting, Children's Oncology Group	\$4,887	Nil
Wendy Panache Program Coordinator– Community Health	New Zealand July 2010	Attend World Health Care Network Conference	\$699	Nil
Gilbert Pavillion Medical Officer	South Korea May–June 2010	Attend 9th Asia-Pacific Congress of Cardiovascular and Interventional Radiology	\$1,945	Nil
Allan Peck X-Ray Service Technician, Biomedical Technology Services	United States of America September–October 2010	Attend Hi-Art 1st Response Technical Training Program	\$8,088	Nil
Leah Peut Clinical Nurse	France March 2011	Attend 9th International Symposium on Targeted Anticancer Therapies	\$4,837	Nil
Jan Phillips Executive Director, Healthcare Culture and Leadership Service	Singapore November 2010	Facilitate Coaching Skills for Leaders course	\$1,280	Nil
Scott Pickard Executive Director, Corporate Services	New Zealand June 2011	Attend mandatory residential school as part of studies in the Executive Masters in Public Administration, Australian and New Zealand School of Government	\$867	Nil
Anne Pink Supervising Scientist, Pathology	New Zealand November 2010	Attend 2010 Asia-Pacific Histocompatibility and Immunogenetics Association Conference	\$2,670	Nil
Helen Porteous Dietetics and Nutrition	China June 2010	Attend World Congress of Cardiology Scientific Sessions 2010	\$4,327	Nil
Daphne Prybyszczuk Radiographer	United States of America November–December 2010	Attend Radiological Society of North America 96th Scientific Assembly and Annual Meeting	\$1,958	Nil
Atifur Rahman Staff Specialist– Cardiology	France May 2010	Attend Europe Scientific Program–Cardiology Conference, Paris	\$12,181	\$15,000 Johnson & Johnson Medical
Gregory Rattray Assistant Director	England April–May 2010	Attend European Society of Therapeutic Radiation Oncology Intensity–Modulated Radiotherapy and other Conformal Techniques Training Course; TomoTherapy European User meeting; site visit Addenbrookes Hospital Cambridge	\$5,775	Nil
Lisa Roberts Senior Radiation Therapist	United Kingdom May 2011	Attend Technologies for Clinical Radiotherapy Conference	\$4,547	Nil
Robyn Rogers Clinical Nurse Consultant	United States of America February–March 2011	Attend 30th Annual Dialysis Conference, Phoenix, Arizona	\$1,604	Nil
Catherine Rogers-Clark Professor of Nursing	USA September 2010	Attend Chicago Colloquium and Directors Meeting, Joanna Briggs Institute	\$2,295	Nil
John Raymond Savill Senior Scientist, Bacteriology Micro Molecular Support	United Kingdom May–June 2011	Present at 2011 Gordon Research Conference on Mycotoxins and Phycotoxins	\$1,657	Nil
Pieter Scheelings Chief Chemist, Forensic and Scientific Services	China April 2011	Attend Bioinformatics and Public Health Microbiology Conference	\$10,348	Nil





Name and position	Destination and date	Reason for travel	Agency cost	Contribution from external sources
Jackie Seljak Clinical Research Manager	United States of America September 2010	Attend investigator meeting, Children's Oncology Group	\$3,907	Nil
Hansjoerg Seltenreich Staff Specialist, Gastroenterology	England November–December 2009	Attend Gastroenterology Medical Congress–Gastro 2009 International Meeting of the United European Federation World Gastroenterology Organisation and the World Gastroenterology Organisation	\$1,777	\$1,777 Abbott Australasia Pty Ltd
Pallav Shah Staff Specialist	Belgium, Canada May–June 2011	Attend 11th Annual Symposium on Aortic Valve Reconstruction surgery; Toronto General Hospital site visit	\$7,118	Nil
Morris Shannon Principal Project Officer (Medical)	United Kingdom September - October 2010	Attend British Medical Journal Careers Fair at Business Design Centre in London and West Midlands Careers Fair at The Science Museum in Birmingham	\$5,562	Nil
Felicia Shay Research Officer	United States of America November–December 2010	Attended Radiological Society North America Scientific Assembly and Annual Meeting	\$5,227	Nil
Teresa Shirlaw Technician	New Zealand October 2010	Attend Sleep DownUnder 2010	\$105	Nil
Megan Simons Occupational Therapist–Consultant	Japan November–December 2010	Attend the International Scar Meeting	\$2,098	Nil
Adelle Simpson Registered Nurse	Korea March 2010	Escort patient to Busan Hospital to provide medical support during the transfer	\$167	Nil
Richard Skoien Hepatology Fellow	United States of America October–November 2010	Attend 61st Annual Meeting–American Association for the Study of Liver Diseases (AASLD)	\$5,158	Nil
David Smith Director Physiotherapy Manager OPSC and MDS	Amsterdam June 2011	Attend 16th International Congress World Confederation for Physical Therapy	\$2,251	Nil
Daniel Smith Cystic Fibrosis and Research Fellow	Spain September 2010	Attend and present at European Respiratory Society Annual Congress	\$2,000	Nil
Sharon Smith Rehab Co-ordinator	Hong Kong June 2010	Attend 2010 Joint World Conference on Social Work and Social Development	\$462	Nil
Dario Sorrentino Chair of Gastroenterology, University of Udine Medical School	Australia October–November 2009	Present 'Crohn's disease: A look at the not so distant future' and visited Sunshine Coast–Wide Bay Health Service District, travelled from Italy	\$1,814	Nil
Brooke Spencer Clinical Nurse	United States of America September 2010	Attend Investigator Meeting of the Children's Oncology Group	\$7,124	Nil
Paul Stafford Director, Leadership Unit, Healthcare Culture and Leadership Service	Singapore November 2010	Facilitate Coaching Skills for Leaders Course	\$1,282	Nil
Peter Steer Chief Executive Officer	Ireland April–May 2011	Attend the Children's Hospitals International Executive Forum	\$4,553	Nil
Ian Stewart Scientist, Organic Chemistry	United States of America June 2011	Represent the Australian delegation in Codex Committee on Pesticide Residues 43rd (CCPR43) meeting. Reported on the work of electronic working group (eWG) conducted out of session	\$2,859	Nil

Name and position	Destination and date	Reason for travel	Agency cost	Contribution from external sources
Malcolm Stewart Non Agency Employee	Australia June 2010	Attend the Queensland Mental Health Information Forum	\$1,409	Nil
Simone Taylor Clinical Nurse Consultant	Italy May–June 2011	Attend the European Society Paediatric Gastroenterology, Hepatology and Nutrition Conference	\$2,797	Nil
Ujang Tinggi Senior Scientist, Food Chemistry	Malaysia November 2010	Attend and present a research paper at the international conference on Food Research 2010 In Kuala Lumpur Malaysia	\$927	Nil
Gavin Trundle Senior Radiographer	New Zealand November 2010	Attend 5th Annual Meeting of Section Magnetic Resource Technologists Australia/New Zealand Chapter	\$731	Nil
Scott Turner Cardiac Scientist	United States of America May 2010	Attend Heart Rhythm 2010	\$571	Nil
Andrew Van Den Hurk Research Etomologist Virology, Communicable Disease	United States of America April–July 2010	Awarded an inaugural Queensland International Fellowship to undertake the project 'The risk of yellow fever to Australia' at University of Texas Medical Branch in Galveston	\$19,829	Nil
Antonio Vega Medical Staff Specialist	New Zealand September 2010	Attend RACS Fellowship Exam Urology	\$768	Nil
David Vesey Research Scientist	United States of America November 2010	Present Paper at 43rd Annual Meeting and Scientific Exposition of American Society of Nephrology	\$2,814	Nil
Brooke Wadsworth Physiotherapist	United States of America June 2011	Attend 2011 International Conference on Spinal Cord Medicine and Rehabilitation	\$3,293	Nil
Geoffrey Waghorn Senior Scientist	United Kingdom May 2010	Attend meetings with Sainsbury Centre on Mental Health and International Initiative conference on Mental Health Leadership	\$1,524	Nil
Catherine Watson Clinical Nurse Consultant	England October 2010	Attend 7th International Conference of the Hospital Infection Society in Liverpool	\$5,779	Nil
Marcus Watson Executive Director, Clinical Skills Development Service	Hong Kong May 2011	Chair the State of the Union address for the Asia Pacific region at the Asia Pacific Meeting on Simulation in Healthcare	\$3,750	Nil
Joan Webster Nursing Director, Research	United States of America October 2010	Attend Joint Colloquium of the Cochrane and Campbell Collaborations	\$933	Nil
Jennifer Williams Registrar	United Kingdom August–September 2010	Attend International Association for Medical Education Conference	\$2,878	Nil
Gregory Wilson Clinical Nurse Consultant	The Netherlands June 2010	Attend World Congress on Vascular Access Devices	\$2,784	Nil
Steven Wolf Non Agency Employee	Australia October 2010	Guest Speaker at Royal Brisbane and Women's Hospital Health Care Symposium, travelled from the United States of America	\$10,754	Nil
Kim Wright Research Officer	France March 2011	Attend 9th International Symposium on Targeted Anticancer Therapies	\$4,837	Nil
Kerstin Wyssusek Staff Specialist	Germany April–May 2011	Attend Scientific Meeting of the Australian Society of Anaesthetists and the Australian and New Zealand College of Anaesthetists; observership–Liver and Multi-organ Transplant Unit at Charite Hospital	\$3,479	Nil







Name and position	Destination and date	Reason for travel	Agency cost	Contribution from external sources
Adrienne Young Dietitian	France September 2010	Attend 32nd International Congress Nutrition and Metabolism	\$3,224	Nil
Jeannette Young Chief Health Officer	Papua New Guinea August 2010	Attend meeting in Port Moresby with the National Department of Health officials to discuss cross border health issues, in particular the incidence of the growing multi drug resistant Tuberculosis arising in Papua New Guinea	\$1,029	Nil
Sylvia Zawlodzka-Bednarz Medical Physicist	New Zealand November 2011	Attend the Basic Clinical Radiobiology Course	\$1,312	Nil
<b>Total</b>			<b>\$552,184</b>	

*Note: The above table includes travels in the previous financial year paid in 2010–2011.*

## Appendix 9.7: Funded organisations 2010–2011

Table 25

Organisation	Total (\$)
Australasian College of Health Service Management	44,220
Aboriginal and Islander Community Health Service (Mackay) Ltd	187,538
Aboriginal and Torres Strait Islander Community Health Service Brisbane Limited	839,307
Abused Child Trust Inc	42,397
Act for Kids	42,395
Act Health	150,000
Addiction Help Agency (Cairns)	493,838
Alcohol and Drug Foundation Queensland	3,358,476
Allied Services	5,150
Alzheimer's Association of Queensland	117,644
Amputees and Family Support Group Queensland Inc	40,406
An Indigenous Corporation for Townsville Youth	5,000
Anglicare Central Queensland Ltd	6,000
Apunipima Cape York Health Council	4,960,342
Arinex Pty Ltd	30,000
Arthritis Foundation of Queensland	301,839
Arts Queensland	35,700
Assert Services Inc	46,500
Association of Queensland Nurse Leaders	10,000
Aurukun Shire Council	77,855
Australasian Society for HIV	20,000
Australia Huntingtons Disease Association	155,977
Australian and New Zealand Association of Psychiatry	20,000
Australian and New Zealand Intensive Care Society	154,368
Australian and New Zealand Mental Health Association	26,545
Australian Breastfeeding Association	82,632
Australian Catholic University Ltd	37,500
Australian Centre for Posttraumatic Mental Health	24,000
Australian Drug Foundation	240,000
Australian Health Practitioner Regulation Agency	200,000
Australian Health Promotion Association	18,000
Australian Helicopters Pty Ltd	6,147,719
Australian Homeland Security Research Centre Pty Ltd	1,000
Australian Medical Association	1,000
Australian Men's Shed Association	909
Australian Nutrition Foundation	279,571
Australian Red Cross Society	437,263
Australian Resuscitation Council	2,520
Australian Society for Medical Research	25,000
Balmoral Cycling Club Inc	924
Barambah Regional Medical Services	120,407
Bayside Initiatives Group Inc	6,000
Bayside PCYC	6,846
Beaudesert State High School	1,130





Organisation	Total (\$)
Beenleigh State High School	2,575
Beerwah State High School	5,000
Bert Pty Ltd	213,957
Better Hearing Australia Brisbane	81,038
Beyond Blue Limited	645,086
Biddi Biddi Community Advancement	5,000
Bidjergdii Aboriginal and Torres Strait Islander Corporation	93,241
Bindal Sharks United Training Employment Sport and Recreation Aboriginal Corporation Ltd	5,000
Binnacle Group Training	4,700
Blackwater State High School	2,176
Blue Care	556,009
Bond University	14,909
Boystown	289,651
Bradfield Nyland Group	33,600
Break Thru People Solutions	4,878
Bridges Aligned Service Inc	127,623
Brisbane City Council	61,182
Brisbane South Division of General Practice Association Inc	408,537
Brisbane Youth Service Inc	244,591
BSI Learning Pty Ltd	322,024
Bundaberg and Burnett Region Community Development Aboriginal Corporation	627,896
Bundaberg and Burnett Region Community Development Aboriginal Corporation	74,061
Bundaberg Fruit and Vegetable Growers	7,130
Bundaberg Health Promotions Ltd	95,088
Burdekin Community Association Inc	8,000
Burdekin Shire Council	10,043
Burrarah Aboriginal and Islander Advancement Co-Op Society Ltd	5,000
Bwngcolman Community School	5,000
Cairns Regional Council	74,970
Cancer Council Queensland	6,458,841
Capella Tieri Middlemount	500
Capricorn Helicopter Rescue Service Ltd	2,054,983
Capricornia Division of General Practice Ltd	525,520
Carbal Medical Centre	555,915
Care Goondiwindi Association Inc	32,004
Careflight Medical Services Ltd	4,060,392
Carpentaria Shire Council	39,136
Cassowary Coast Regional Council	9,091
Cassowary Coast Sporting for Youth Indigenous Corporation	4,545
Catalyst	40,000
Centacare St Mary's Community Services	78,241
Central Queensland Helicopter Rescue Service Ltd	3,016,115
Central Queensland Rural Division of General Practice	507,669
Central Queensland University	418,427
Centre Against Sexual Violence Inc.	553,229
Centre for Rural and Remote Mental Health—Queensland	545,000

Organisation	Total (\$)
CEO Enterprises	4,997
Cerebral Palsy League of Queensland	592,013
Charles Darwin University	4,082
Charleville and Western Areas Aboriginal and Torres Strait Islander Corporation for Health	254,871
Charleville Aboriginal Arti-fact Project	2,500
Charters Towers Neighbourhood Centre Inc	343,684
Charters Towers United Inc	3,416
Cherbourg Aboriginal Shire Council	102,855
Children By Choice Association Inc	381,751
Chinchilla and District Amateur Fishing Club	4,645
Christine J Sly	1,500
Christopher J Edwards	1,560
Church of Christ	125,630
Cittamani Hospice Service	316,165
Cloncurry Shire Council	4,091
Colmar Brunton Intelligence	49,116
Community Services Tablelands Inc	69,999
Community Solutions	157,157
Compassionate Friends Queensland Inc	38,676
Congress Community Development and Education Unit Ltd	815,263
Cooloola Human Services Network	9,770
Cow Bay Clinic	5,000
Cultureshift Pty Ltd	81,818
Cunnamulla Aboriginal Corporation	5,000
Cystic Fibrosis Queensland Limited	244,638
Darumbal Community Youth Service Inc	106,336
Deadlee Maarders Association Inc	14,270
Deaf Children Australia	50,766
Deakin University Warrnambool	4,980
Department of Communities	348,000
Department of Community Safety	582,727
Department of Education and Training	1,887,334
Department of Employment, Economic Development and Innovations	12,225
Department of Health and Ageing	2,862,329
Department of Health, South Australia	1,885,071
Department of Health, State Government of Victoria	23,430
Department of Human Services, Victoria	13,126
Department of Immigration and Citizenship	10,000
Department of Justice and Attorney	747,550
Department of the Premier and Cabinet	10,000
Department of Transport and Main Roads	130,000
Depression Support Network	65,735
Diabetes Australia—Queensland	1,884,098
Diamantina Shire Council	308,116
Doomadgee Aboriginal Community Council	67,855
Doomadgee PCYC	23,909





Organisation	Total (\$)
Dr Matthew R Salamonsen	29,165
Drug Arm Australasia	1,998,986
Dunwich State School	5,000
DV Connect Limited	394,500
Eagle Edge Solutions	2,579
East Creek Neighbourhood Centre Inc	1,720
Eczema Association of Australia Inc	22,922
Emergency Medicine Australia Pty Ltd	123,117
Engaging Minds Pty Ltd	92,768
Enhance Management Pty Ltd	41,485
Epilepsy Queensland Inc	218,459
Ethnic Communities Council of Queensland	1,493,751
Eumundi State School	9,091
Family Planning Queensland Ltd	5,793,527
Far North Queensland Rural Division of General Practitioner	942,787
Fieldworx Pty Ltd	28,897
Flight Safety Pty Ltd	16,599
Flinders Shire Council	28,600
Flinders University of SA	225,000
Fresh Marketing Australia Pty Ltd	63,185
Gai-Nami Arts Music Multicultural Sport and Recreation Inc	4,770
Gatecrasher Advertising Pty Ltd	186,364
General Practice Gold Coast Ltd	326,104
General Practice Queensland Ltd	2,581,151
Gindaja Treatment and Healing Indigenous Corp	470,309
Girringun Aboriginal Corporation	4,000
Girudala Community Co-Operative Society Ltd	386,199
Glenmore State High School	776
Gold Coast Centre Against Sexual Violence Inc	565,430
Gold Coast Drug Council Inc	1,711,628
Goldbridge Rehabilitation Services Inc	337,382
Goondir Aboriginal and Torres Strait Islander Corporation	444,641
Goondiwindi PCYC	5,000
Goori Original Limited	134,926
GP Links Wide Bay Inc	944,491
GP Partners Limited	815,288
Griffith University	2,672,267
Gudjal Traditional Owners Aboriginal Corporation	5,875
Gurriny Yealamucka Health Services Aboriginal Corporation	313,834
Gympie and District Women's Health Group Inc	274,700
Gynaecological Cancer Society of Queensland Inc	140,820
Haemophilia Foundation	147,903
Harlaxton Neighbourhood	5,000
Health ED Professionals	1,182
Health Outcomes International P/L	39,190
Health Promotion Connections Inc	229,336



Organisation	Total (\$)
Health Workforce Queensland	45,455
Healthy Initiatives and Choices	2,576,596
Hear and Say Centre	2,796,000
Heatley Secondary College	1,575
Helen L Barrett	8,000
Hepatitis Council of Queensland	835,599
Hervey Bay Neighbourhood Centre Incorporated	75,000
Highfields and District Junior Rugby League Club Inc	4,935
Hinchinbrook Community Support	4,545
Hope Vale Aboriginal Council	108,032
Hopewell Hospice Services Inc	306,970
Immigrant Womens Support Service	227,723
Inala PCYC	3,378
Inala Elders Aboriginal and Torres Strait Islanders Corporation	45,000
Inala Primary Care Ltd	223,728
Inala Wangarra Inc	3,660
Indigenous Wellbeing Centre Aboriginal Corporation	2,781,900
Institute for Healthy Communities	35,080
Institute for Urban Indigenous Health Ltd	1,222,727
Ipswich 60 and Better Program Inc	5,227
Ipswich and West Moreton Division of General Practice	168,269
Ipswich City Council	300,000
Ipswich Hospice Care Inc	663,927
Islanders Board of Industry and Service	250,000
James Cook University (This amount includes a funding contribution to the School of Medicine and Dentistry to support the dental programs and clinical training facilities).	28,157,923
Jimboomba Community Care Association Inc	94,558
Joseph A Chandler	21,000
Julia Creek Dirt and Dust Festival	1,000
Justin P McKeown	8,514
Kalwun Development Corporation Ltd	609,000
Kambu Medical Centre Ipswich Inc	407,456
Kamilaroi Frogs Inc	4,470
Keep Australia Beautiful Council	317,309
Kidby Enterprises Pty Ltd	10,000
Kidney Health Australia	49,500
Kidney Support Network Inc	1,063,742
Kidsafe Queensland Inc	48,807
Kingston Community Enterprises	5,000
Kirwan State High School	4,591
Kowanyama Aboriginal Council	78,289
Kungi Aboriginal Corporation	10,000
KW Consulting Group Pty Ltd	5,000
Latrobe University	359,533
Lee-Jenn Health Consultants Pty Ltd	90,000
Leukaemia Foundation of Queensland	2,430,000
Lifeline Ipswich and West Moreton	30,000





Organisation	Total (\$)
Lifetec Queensland Inc	207,029
Liquor Industry Action Group	3,000
Little Haven Cooloola	107,444
Local Government Association of Queensland Inc	552,500
Lockhart River Aboriginal Council	183,225
Logan Womens' Health Centre Inc	597,051
Lupus Australia Queensland Inc	39,400
Lyons House Inc	97,330
Mackay PCYC	2,636
Mackay Division of General Practice Ltd	113,575
Mackay North State High School	7,550
Mackay Regional Council	44,090
Mackay Regional Council for Social Development Ltd	144,902
Mackay Women's Centre Inc	189,283
Mamu Health Service Ltd	176,717
Mater Children's Hospital	90,909
Mater Medical Research Institute	789,000
Mater Misericordiae Health Services Brisbane Ltd	465,606,659
Mater Misericordiae Hospital Townsville Ltd	78,439
McKinlay Shire Council	7,715
ME/CFS/FM Support Association Queensland Inc	11,497
Med-E-Serv Pty Ltd	122,045
Medial Research Commercialisation Fund	300,000
Mental Health Council of Australia	15,504
Menzies School of Health Research	420,000
Mercy Health and Aged Care	119,285
Mereki Community Association Inc	5,000
Metro Pty Ltd	34,860
Mibbinbah Limited	5,000
Mirani State High School	3,621
Mission Australia	138,164
Monash University	39,350
Mookai Rosie Bi-Bayan	310,410
Morayfield State High School	8,700
Moreton Bay Regional Elders Council	4,020
Mornington Island Aboriginal Corporation for Health	5,000
Mornington Island PCYC	1,818
Mornington Island Shire Council	45,306
Mosquito and Arbovirus Research Committee Inc	59,128
Mount Isa Combined Agencies Team	20,000
Mount Isa Community Development Association	127,500
Mount Isa Aboriginal Community	4,541
Mudth Niyleta Aboriginal and Torres Strait Islanders Corporation	295,000
Murriajabree ATSI Association	20,000
Murrigunyah Aboriginal and Torres Strait Islander Corporation For Women	206,611

Organisation	Total (\$)
Murrumba Aboriginal Housing Co Ltd	4,300
Muscular Dystrophy Association of Queensland Inc	22,992
Nadzab Pty Ltd	2,072
Napranum Community Council	37,682
National Blood Authority	81,636,266
National E-Health Transition Authority Ltd	7,839,832
National Heart Foundation	558,153
National Stroke Foundation	1,846,269
Neighbourhood Centre Assoc Inc	6,084
Netball Queensland	90,000
Nhulundu Woeribah Indigenous Health Organisation	1,522,656
Nicole E Andrews	5,000
Nicole M Walker	23,332
Nintinringanyi Cultural Training Centre Incorporated	4,952
Noetic Solutions Pty Ltd	70,000
North and West Queensland Primary Health Care Association Inc	235,080
North Bundaberg Eels Softball Club	4,960
North Coast Aboriginal Corporation	604,495
North Queensland Combined Womens Services Incorporated	606,010
North Western Red Bucks Indigenous Junior Rugby League Development Academy Inc	5,000
Northern Beaches State High School	500
Northern Peninsula Region Council	188,565
Nova Aerospace Pty Ltd	4,800
NSW Department of Health	3,100
NSW Institute of Psychiatry	42,995
Ocearn Pty Ltd	2,233
Older Women's Network Queensland Inc	85,893
Oncall Language Services Pty Ltd	120,000
Outback Festival Inc	4,900
Ozcare	3,281,959
Pacific Private Hospital Pty Ltd	2,044,788
Palliative Care Queensland Inc	90,745
Palm Island Aboriginal Council	67,855
Palm Island Boxing Aboriginal Corporation	5,000
Paroo Shire Council	9,900
Phan T Nguyen	1,938
Phoenix House Association Inc	210,701
Pimlico State High School	500
Pioneer State High School	5,000
Playgroup Association of Queensland Inc	140,909
Pormpur Pannth Aboriginal Corporation	209,091
Pormpuraaw Aboriginal Council	67,855
Positive Ageing Cairns Inc	4,545
Postgraduate Medical Education Council of Queensland	855,667
Pregnancy and Family Support Association Gold Coast Inc	17,360
Pregnancy Help Queensland Inc	144,605





Organisation	Total (\$)
Public Service Commission	7,500
Queensland Aboriginal and Islander Health Council	965,360
Queensland Aboriginal and Torres Strait Islander College for Health Education and Training	127,500
Queensland Alliance of Mental Health Inc	50,000
Queensland Ambulance Service	49,220
Queensland Association for Healthy Communities	2,627,905
Queensland Association of School	80,403
Queensland Bioethics Centre for the Queensland Catholic Dioceses	7,092
Queensland Corrective Services	360,000
Queensland Council of Social Service Inc	100,000
Queensland Emergency Medicine Research Foundation	2,000,000
Queensland Injectors Health Network Inc	1,780,360
Queensland Interpreting and Translating Service	10,000
Queensland Keep Fit Association Inc	5,990
Queensland Police Service	1,321,188
Queensland Positive People Inc	753,835
Queensland Residents and Registrars Research Foundation	2,500,000
Queensland University of Technology	1,239,682
Queensland Voice For Mental Health Inc	47,273
Queensland Women's Health Network Inc	51,506
Radio Lollipop (Aust) Ltd	25,000
Ramsay Health Care Ltd—Cairns	45,845
Ramsay Health Care Ltd—John Flynn	53,857
Ramsay Health Care Ltd—Nambour	61,699
Ramsay Health Care Ltd—North West	123,773
Ramsay Health Care Ltd—Pindara	108,983
Ramsay Health Care Ltd—St Andrews	34,614
Raymond Chan	49,996
Reclink Australia	136,000
Redbourne Business Services	829,297
Redland City Council	11,500
Respect Inc	479,383
Retina Australia (Queensland) Inc	15,689
RHealth	1,215,686
Roma State College Middle Campus	2,086
Roma State School	789
Ronald McDonald House Townsville	250,000
Rotary Club of Hervey Bay	50,000
Royal Alexandra Hospital for Children	30,000
Royal Children's Hospital Foundation	500,000
Royal Flying Doctor Service	40,603,306
Royal Life Saving Society of Queensland	6,818
Royal Queensland Bush Children's Health Scheme	910,868
RSL Queensland War Veterans Homes Ltd	128,093
Sailability Tin Can Bay Inc	1,330
Saint Mary's Catholic Parish	113,144

Organisation	Total (\$)
Salvation Army—Southport	1,803,078
Salvation Army Residential	2,166,946
Salvation Army Townsville	858,679
Samuel R Broadbent	21,000
Sands Queensland Inc	81,377
Scholarship Students	485,960
Scholarship Students—QHMBs Education Support	7,326,900
Scleroderma Association of Queensland Inc	5,424
Scoliosis Support Group of Queensland Inc	7,231
SEA-GP Brisbane Ltd	523,815
Self Help Queensland Inc	97,857
Seventh Day Adventist Church	15,300
Sexual Health Education	50,000
Shelter Housing Action Group	35,059
Sisters Inside Inc	206,611
Smart Service Queensland	263,052
South Burnett PCYC	10,000
South Burnett Physiotherapy	7,765
Southbank Institute of Technology	26,580
Southern Gulf Catchments Ltd	34,167
Spinal Injuries Association	54,180
Spinifex State College—Mount Isa	4,900
Spiritus Care Services	191,910
St George Aboriginal Housing Co Ltd	5,000
St Helens State School	2,895
St Vincent De Paul Society	75,443
St Vincent's Hospital Brisbane	12,509,517
St Vincent's Hospital Toowoomba	73,085
State Library of Queensland	6,816
Stefan Blum	63,332
Stroke Association Queensland Inc	294,674
Sunnybank Private Hospital	89,467
Sunshine Coast Division of General Practice Ltd	919,544
Sunshine Coast Helicopter Rescue Service Ltd	5,682,531
Sunshine Coast Institute of TAFE	75,000
Sunshine Cooloola Services Against Sexual Violence Inc	436,008
Surf Life Saving Queensland	225,000
Sydney Local Health Network	40,119
Tablelands Rape and Incest Crisis Centre	234,949
Tablelands Regional Council	42,955
Tai Chi for Busy People	6,000
Telstra	4,424,931
The Asthma Foundation of Queensland	346,666
The Australian Lung Foundation	244,574
The Brook Red Centre Inc	117,125
The Cancer Council, Victoria	39,091





Organisation	Total (\$)
The Commonwealth Scientific and Industrial Research Organisation (CSIRO)	1,046,019
The Conference Company Australia Pty Ltd	5,000
The Cootharinga Society of North Queensland	100,000
The Corporation of the Synod of the Diocese of Brisbane	2,965,259
The George Institute	35,000
The Good Foundation Pty Ltd	251,200
The Karuna Hospice Service Ltd	992,126
The Noosa Hospital	24,475,033
The Pharmacy Guild of Australia	168,541
The Queensland Asbestos Related Disease Support Society Inc	133,000
The Queensland Institute of Medical Research	15,052,450
The Queensland Network of Alcohol and Drug Agencies Inc	386,645
The Queensland Skin and Cancer Trust	267,419
The Roman Catholic Trust Corporation for the Diocese of Rockhampton Inc.	112,669
The Royal Australasian College of Physicians	100,000
The Salvation Army Youth	31,800
The Social Research Centre P/L	56,203
The South East Primary Health Care Network Ltd	1,006,354
The Trustee for KYC Trust	5,000
The Trustee for Moovit	64,254
The University of Adelaide	172,400
The University of New South Wales	117,558
The University of Sydney	150,000
The University of Western Australia	8,974
The Wesley Research Institute Ltd	250,000
The Women's Psychotherapy Services Inc	137,469
Theodore Council on the Ageing	351,896
Thuringowa State High School	1,138
Toowoomba and District Division of General Practice Ltd	852,061
Toowoomba and District Youth Service Inc	4,660
Toowoomba Hospice Association Inc	444,750
Toowoomba Hospital Foundation	10,000
Toowoomba Liquor Industry	3,000
Torquay State School	2,870
Torres Strait Island Regional Council	426,061
Torres Strait Islanders Media Association Inc	4,545
Torres Strait Regional Authority	110,000
Total Health and Education Foundation	37,990
Townsville Aboriginal and Islander Health Service	139,286
Townsville City Council	2,000
Townsville Division of General Practice Ltd	799,368
Townsville State High School	500
Translational Research Institute	32,644,000
Treasurer Myasthenia Gravis Association of Queensland Inc	23,643
UMI Arts Limited	5,000
UniQuest Pty Ltd	87,641



Organisation	Total (\$)
UnitingCare Health	159,673
University of Queensland	14,792,494
University of South Australia	527,272
University of Southern Queensland	223,949
Valley Chamber of Commerce Inc	5,000
Wagalgau Garkaziw Zageth Inc	4,545
Warriors Reunion Committee Inc	4,000
We Help Ourselves	229,235
Wesley Mission Brisbane	159,927
Western Downs Regional Council	21,800
Westmead Medical Research	4,545
White Rock State School	1,000
Whitsunday Crisis and Counselling Service	206,611
Whitsunday Regional Council	9,091
Wide Bay Sexual Assault Association	210,705
Wide Bay Women's Health Centre Inc	424,277
William Ross State High School	500
Wingaway Air Pty Ltd	6,564
Women's Community Aid Association Ltd	324,890
Women's Health Awareness Group	379,527
Women's Health Information and Referral Service C Q Inc	753,989
Women's Health Queensland Wide Inc	763,927
Woorabinda Aboriginal Council	54,068
Wuchopperen Health Service Ltd	82,513
Wujal Wujal Aboriginal Council	102,171
WWILD-SVP Association Inc	217,704
XVT Solutions Pty Ltd	80,406
Yarrabah Aboriginal Council	170,000
Youth Affairs Network of Queensland	10,000
Youth Empowered Towards Independence Inc	241,376
Youth Services Providers	90,516
Yulu-Burri-Ba Aboriginal Corporation	1,054,841
Zig Zag Young Women's Resource	324,890
<b>Total</b>	<b>907,054,492</b>





## Appendix 9.8: Compliance checklist—Annual Report

Table 26

FA ACT      *Financial Accountability Act 2009*  
 FPMS      *Financial and Performance Management Standard 2009*  
 ARRs      Annual Report Requirements for Queensland Government agencies

		Basis for requirement	Annual report reference
Accessibility	Table of contents Glossary	ARRs—section 8.1	P 2-3 P 146-149
	Public availability	ARRs—section 8.2	Inside front cover
	Interpreter service statement	<i>Queensland Government Language Services Policy</i>	Inside front cover
	Copyright notice	<i>Copyright Act 1968</i>	Inside front cover
	Government Information Licensing Framework (GILF) Licence	<i>Government Information Licensing Framework (GILF) QGEA Policy</i>	Inside front cover
Letter of compliance	A letter of compliance from the accountable officer or statutory body to the relevant Minister(s)	ARRs—section 9	P 1
General information	Introductory Information	ARRs—section 10.1	P 4-6
	Agency role and main functions	ARRs—section 10.2	P 7-8
	Operating environment	ARRs—section 10.3	P 4-6; 9-13
	External scrutiny	ARRs—section 10.4	P 135-138
	Machinery of government changes	ARRs—section 10.5	P 23
	Review of proposed forward operations	ARRs—section 10.6	P 27-28
Non-financial performance	Government objectives for the community	ARRs—section 11.1	P 4; 7; 7 37-39; 49; 105; 109
	Other whole-of-government plans/specific initiatives	ARRs—section 11.2	P 65-68
	Council of Australian Government (COAG) initiatives	ARRs—section 11.3	P 29; 43; 61-62; 65; 74; 100; 109; 112; 116
	Agency objectives and performance indicators	ARRs—section 11.4	P 30; 46-47; 64; 78-79
	Agency services and service standards	ARRs—section 11.5	P 128-134
Financial performance	Summary of financial performance	ARRs—section 12.1	P 24-26
	Chief Finance Officer (CFO) statement	ARRs—section 12.2	P 27

	Summary of requirement	Basis for requirement	Annual report reference
Governance—management and structure	Organisational structure	ARRs—section 13.1	P 154-155
	Executive management	ARRs—section 13.2	P 80-82
	Related entities	ARRs—section 13.3	P 139
	Schedule of statutory authorities or instrumentalities	ARRs—section 13.4	P 142; 144
	Boards and committees	ARRs—section 13.5	P 111-120
	<i>Public Sector Ethics Act 1994</i>	<i>Public Sector Ethics Act 1994</i> (section 23 and Schedule)	P 121
	<i>Whistleblowers Protection Act 1994</i>	<i>Whistleblowers Protection Act 1994</i> (sections 30–31 and Schedule)	P 124
Governance—risk management and accountability	Risk management	ARRs – section 14.1	P 122
	Audit committee	ARRs—section 14.2	P 119-120
	Internal Audit	ARRs —section 14.3	P 123-124
Governance—human resources	Workforce planning, attraction and retention	ARRs—section 15.1	P 87-90; 94-95
	Early retirement, redundancy and retrenchment	Directive No.17/09 Early Retirement, Redundancy and Retrenchment	P 95
	Initiatives for women	ARRs—section 15.1 and 15.3	P 52; 67; 91; 109
	<i>Carers (Recognition) Act 2008</i>	<i>Carers (Recognition) Act 2008</i>	P 92
Governance—operations	Consultancies	ARRs—section 16.1	P 99
	Overseas travel	ARRs—section 16.2	P 88; 156-166
	Information systems and recordkeeping	ARRs—section 16.3	P 126-127
	Waste management	<i>Environmental Protection (Waste Management) Policy 2000, Environmental Protection Act 1994</i>	P 105
Other prescribed requirements	Indigenous matters (The Queensland Government Reconciliation Action Plan 2009–2012)	The Queensland Government Reconciliation Action Plan 2009–2012	P 65-68
	Shared services	ARRs—section 17.2	P 96
	Carbon emissions	Premier's Statement	P 105





Summary of requirement		Basis for requirement	Annual report reference
Optional information that may be reported	Corrections to previous annual reports	ARRs—section 18.1	Nil
	Right to Information	<i>Right to Information Act 2009</i>	P 124-125
	Information Privacy	<i>Information Privacy Act 2009</i>	P 124-125
	Native title	N/A	P 56
	Complaints Management	N/A	Nil
Financial statements	Certification of financial statements	FA Act—section 62 FPMS—sections 42, 43 and 50	P 181-240
	Independent Auditors Report	FA Act—section 62 FPMS—section 50	P 238-240
	Remuneration disclosures	Financial Reporting Requirements for Queensland Government Agencies	P 234