

4. Appendix A: Storm damage

4.1 Christmas day storm 2023

On 25 December 2023, the Gold Coast experienced a severe weather event (tornado and large storm) that resulted in extensive damage to homes and vegetation between Ormeau and Molendinar. This storm passed directly over the Coomera Connector Stage 1 site including North Central and South packages.

Assessments were made in early January to determine the level of damage to construction sites. These assessments will be discussed below.

4.1.1 Stage 1 North package

The North package experienced vegetation damage south of Helensvale Road both within, and outside of the corridor. Images of before and after the storm below show the extent of damage.

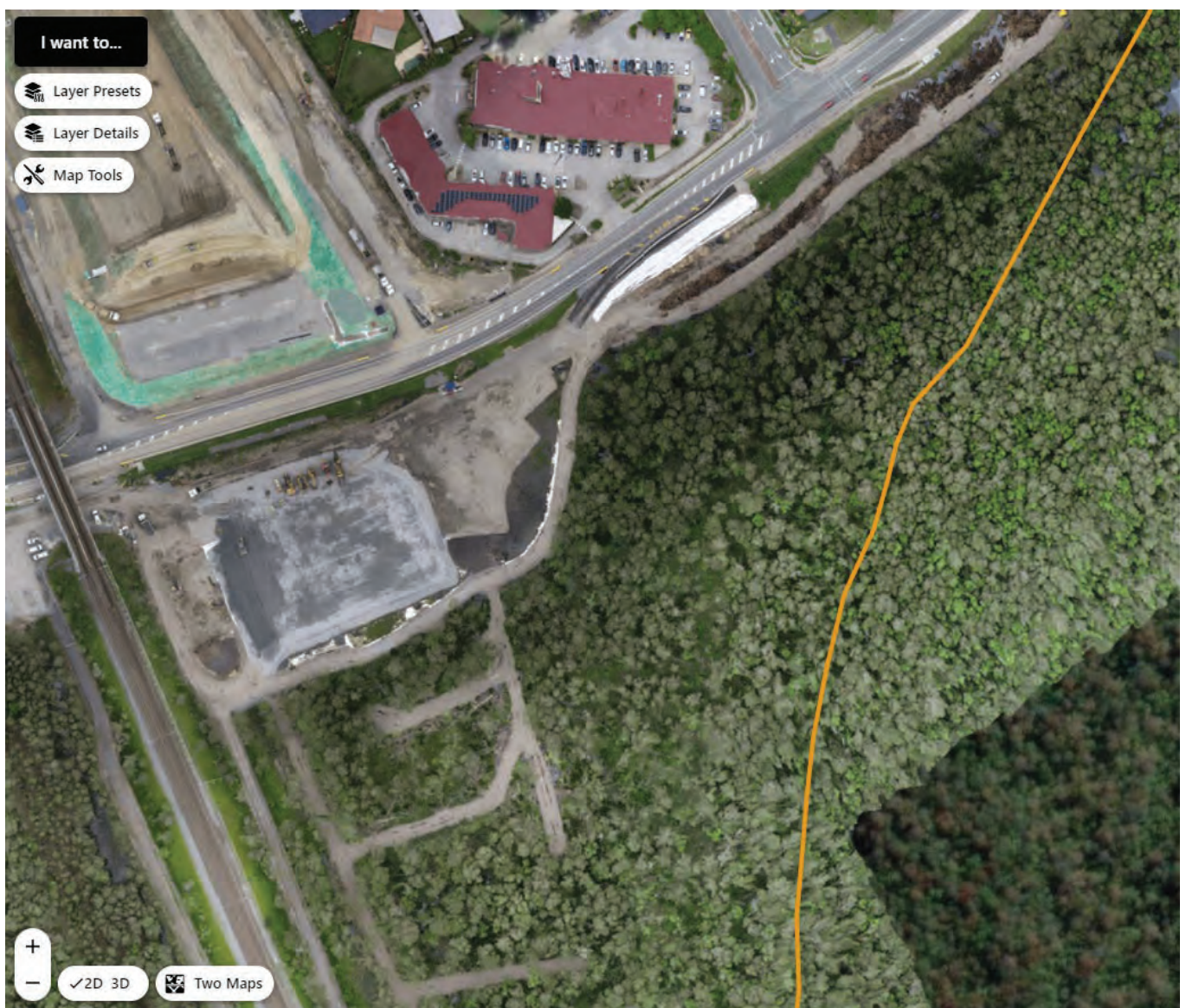


Figure 1: Aerial view of Helensvale Road before storm



Figure 2: Aerial view of Helensvale Road after storm

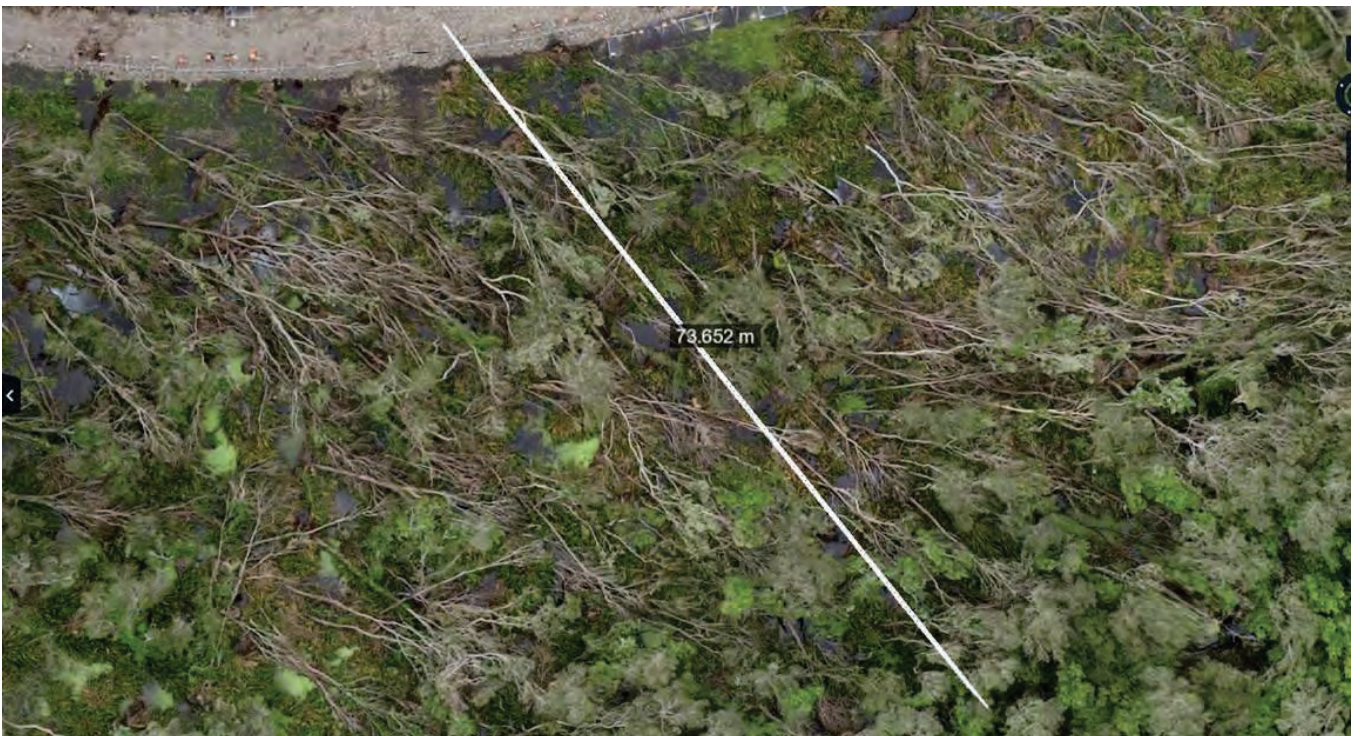


Figure 3: Aerial view of Helensvale Road vegetation damage zoomed in

4.1.2 Stage 1 Central package

The Central package experienced vegetation damage north of Gold Coast Highway, both within and outside of the corridor. Images after the storm below (28 December 2023) show the extent of damage.



Figure 4: Aerial view of Gold Coast Highway vegetation damage zoomed in



Figure 5: Post-storm damage to fencing/vegetation, Ridgevale Drive, north side



Figure 6: Post-storm vegetation damage on site, Ridgevale Drive north side



Figure 7: Post-storm vegetation damage on site, Ridgevale Drive south side



Figure 8: post-storm vegetation damage on site, Ridgevale Drive north side.

4.1.3 Stage 1 South package

No visible storm damage was recorded across the South Package following the December 28th severe storm event that impacted the Gold Coast Region.

4.2 Cyclone Alfred impact - March 2025

4.2.1 Stage 1 North and South Package

No major visible vegetation damage was recorded across the Coomera Connector Stage 1 North construction package and South Early Works package following Cyclone Alfred disaster event in March 2025.

4.2.2 Stage 1 Central Package



Figure 1: Post cyclone Alfred vegetation damage and temporary koala fencing damage near Helensvale Road.



Figure 2; Post cyclone Alfred evidence of fallen vegetation near Ridgevale Drive.